



1725 Montgomery Street, Floor 3
San Francisco, CA 94111
Brightmark.com

June 22, 2023

South Dakota Public Utilities Commission
500 East Capitol Avenue
Pierre, SD 57501

To Whom It May Concern:

Per the requirement of 49-34C-3, please let this letter serve as notice certifying Brightmark Athena RNG, LLC “Brightmark” has completed all the written notices and installation of signage required of it under 49-34C for the 32-mile biogas gathering line located north of Sioux Falls, SD. Included with this letter are copies of the written notice(s) that were sent out to the affected public on October 28th, 2022, per 49-34C-2.

If you have any questions, comments, or concerns please feel free to reach out to me.

Thank you,

Jonathan Nektivinda
Manager, Pipeline O&M
Office: 650-420-7505
Cell: 515-570-7586

Attachment #1 – Letter sent to homeowners in the area.
Attachment #2 – Letter sent to emergency services in the area.
Attachment #3 – Letter sent to all other required parties.



1725 Montgomery Street, Floor 3
San Francisco, CA 94111
Brightmark.com

Beginning at the intersection of **254th St** and **473rd Ave**, in Baltic, South Dakota and traveling north to the intersection of **253rd St** and **473rd Ave**. Then turning west along **253rd St** to the intersection of **253rd St** and **471st Ave**, and then turning north to the intersection of **252nd St** and **471st Ave**. Here the line runs across private property, north west, crossing **470th Ave** to the intersection of **251st St** and **469th Ave**. Then, the line goes north to the intersection of **249th St** and **469th Ave**. Then the line turns east, to the intersection of **249th St** and **470th Ave**, where it then turns north to the intersection of **248th St** and **470th Ave**. The line then travels east to the intersection of **248th St** and **481st Ave**. The line turns north, and travels to the intersection of **247th St** and **481st Ave**. The line turns east and travels to the intersection of **247th St** and **487th Ave**, where it turns north to the intersection of **246th St** and **487th Ave**. Finally, the line turns east and runs along **246th St** until it ends at 48772 246th St, Sherman, SD 57030.

There is also a line that tees off of the main line. This line connects to the line above at the intersection of **248th St** and **472nd Ave**, where it travels south to the intersection of **249th St** and **472nd Ave**. Then the line turns east, where it runs along **249th St** until it ends near the intersection of **249th St** and **473rd Ave**.

The line will also have markers installed near the location of the line along this route, stating that there is a biogas line in the area.

If you have any question, comment, or concerns please feel free to reach out to me, or call (866) 497-2284.

Thank you,

Jonathan Nkvinda
Manager, Pipeline O&M
Office: 650-420-7505
Cell: 515-570-7586

Hello,

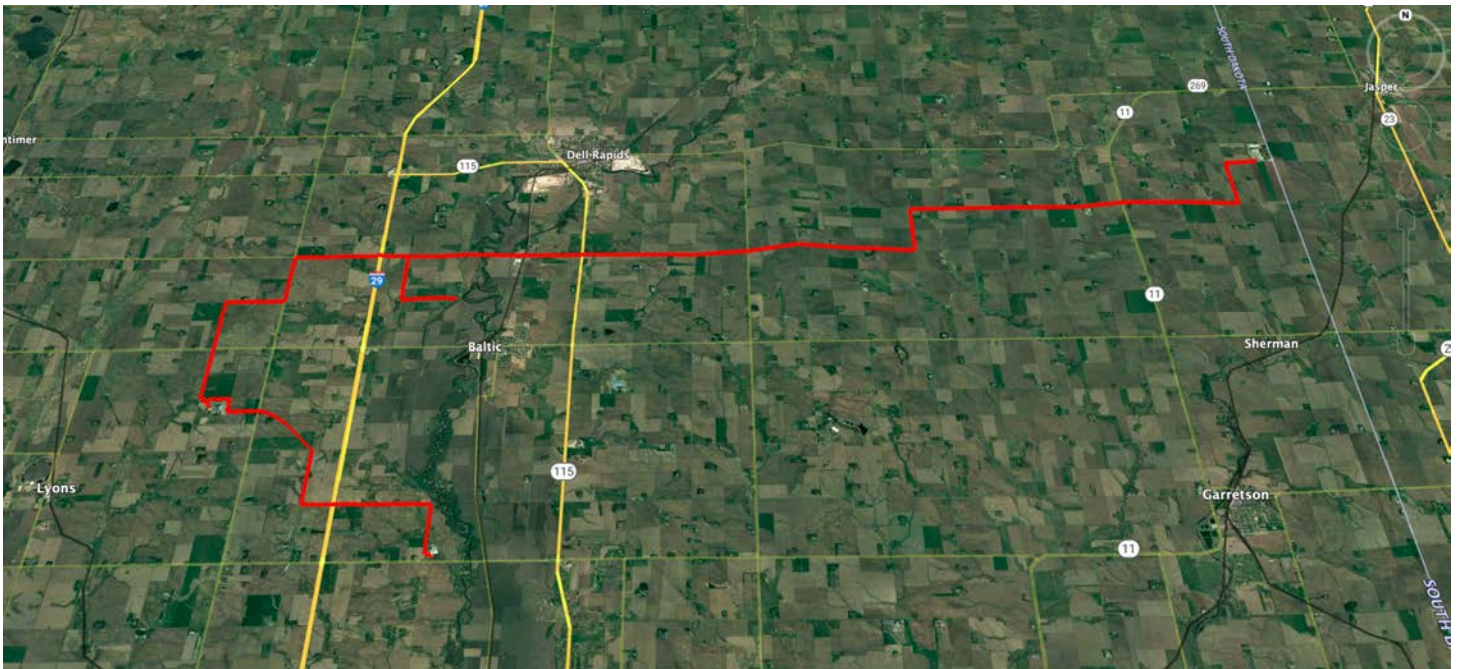
Brightmark, on its mission to Reimagine Waste, has built and will operate a biogas gathering line near or within your service area. This line will safely and efficiently move biogas from our sites, located on our partner dairy farms, to an interconnect with a major interstate natural gas pipeline. This line will be operated in a manner consistent with a natural gas gathering line, and similar precautions should be taken when working or excavating in the area. Below are some risks that biogas can pose if there were a release of gas:

- **Fire/Explosion:** Like natural gas, biogas contains a concentration of methane, that, if mixed with the correct amount of air will ignite.
- **Confined Space Hazard:** Biogas, like natural gas, displaces air and can be hazardous in a confined space. Since biogas contains up to 40% CO₂ it will not rise as quickly as normal natural gas and can accumulate in a confined space easier.
- **H₂S & NH₃ Poisoning:** Biogas can contain a hazardous amount of H₂S and NH₃ depending on how far along in the upgrading process it is. Both these gasses can be hazardous if exposed to too high of a concentration.

If you suspect a natural gas or biogas leak in this area, please call Brightmark's 24/7 call center at **(866) 497-2284**. Do not attempt to stop/repair the leak yourself, and do not operate any valves along the line.

Brightmark is registered with South Dakota's 811 program and will respond to locate requests like any other utility. If you plan on excavating, please call 811 at least 48 hours beforehand to ensure these biogas facilities can be marked according to South Dakota law. Please be aware that biogas lines will be marked in yellow, the same as natural gas lines.

Below is a satellite view of the Brightmark biogas line followed by a written description of the route for your convenience:





1725 Montgomery Street, Floor 3
San Francisco, CA 94111
Brightmark.com

Beginning at the intersection of **254th St** and **473rd Ave**, in Baltic, South Dakota and traveling north to the intersection of **253rd St** and **473rd Ave**. Then turning west along **253rd St** to the intersection of **253rd St** and **471st Ave**, and then turning north to the intersection of **252nd St** and **471st Ave**. Here the line runs across private property, north west, crossing **470th Ave** to the intersection of **251st St** and **469th Ave**. Then, the line goes north to the intersection of **249th St** and **469th Ave**. Then the line turns east, to the intersection of **249th St** and **470th Ave**, where it then turns north to the intersection of **248th St** and **470th Ave**. The line then travels east to the intersection of **248th St** and **481st Ave**. The line turns north, and travels to the intersection of **247th St** and **481st Ave**. The line turns east and travels to the intersection of **247th St** and **487th Ave**, where it turns north to the intersection of **246th St** and **487th Ave**. Finally, the line turns east and runs along **246th St** until it ends at 48772 246th St, Sherman, SD 57030.

There is also a line that tees off of the main line. This line connects to the line above at the intersection of **248th St** and **472nd Ave**, where it travels south to the intersection of **249th St** and **472nd Ave**. Then the line turns east, where it runs along **249th St** until it ends near the intersection of **249th St** and **473rd Ave**.

The line will also have markers installed near the location of the line along this route, stating that there is a biogas line in the area.

If you have any question, comment, or concerns please feel free to reach out to me, or call (866) 497-2284.

Thank you,

Jonathan Nekvinda
Manager, Pipeline O&M
Office: 650-420-7505
Cell: 515-570-7586



1725 Montgomery Street, Floor 3
San Francisco, CA 94111
Brightmark.com

Beginning at the intersection of **254th St** and **473rd Ave**, in Baltic, South Dakota and traveling north to the intersection of **253rd St** and **473rd Ave**. Then turning west along **253rd St** to the intersection of **253rd St** and **471st Ave**, and then turning north to the intersection of **252nd St** and **471st Ave**. Here the line runs across private property, north west, crossing **470th Ave** to the intersection of **251st St** and **469th Ave**. Then, the line goes north to the intersection of **249th St** and **469th Ave**. Then the line turns east, to the intersection of **249th St** and **470th Ave**, where it then turns north to the intersection of **248th St** and **470th Ave**. The line then travels east to the intersection of **248th St** and **481st Ave**. The line turns north, and travels to the intersection of **247th St** and **481st Ave**. The line turns east and travels to the intersection of **247th St** and **487th Ave**, where it turns north to the intersection of **246th St** and **487th Ave**. Finally, the line turns east and runs along **246th St** until it ends at 48772 246th St, Sherman, SD 57030.

There is also a line that tees off of the main line. This line connects to the line above at the intersection of **248th St** and **472nd Ave**, where it travels south to the intersection of **249th St** and **472nd Ave**. Then the line turns east, where it runs along **249th St** until it ends near the intersection of **249th St** and **473rd Ave**.

The line will also have markers installed near the location of the line along this route, stating that there is a biogas line in the area.

If you have any question, comment, or concerns please feel free to reach out to me, or call (866) 497-2284.

Thank you,

Jonathan Nektivinda
Manager, Pipeline O&M
Office: 650-420-7505
Cell: 515-570-7586

Category	Name	Street	City	State	Zip	Letter Received
County	Minnehaha County	415 N. Dakota Ave	Sioux Falls	SD	57104	Others
Town	Dell Rapids, SD	302 E 4th St	Dell Rapids	SD	57022	Others
Town	Baltic, SD	130 St. Olaf Ave	Baltic	SD	57003	Others
Fire Department	Dell Rapids Fire & Rescue	401 W 4th St	Dell Rapids	SD	57022	Emergency Services
Fire Department	Baltic Volunteer Fire & Rescue	310 Lovely Ave	Baltic	SD	57003	Emergency Services
Fire Department	Colton Fire Department	309 E 4th St	Colton	SD	57018	Emergency Services
Fire Department	Lyons Volunteer Fire Department	25288 467th Ave	Baltic	SD	57003	Emergency Services
Fire Department	Crooks Volunteer Fire Department	200 W 4th St	Crooks	SD	57020	Emergency Services
Fire Department	Hartford Area Fire & Rescue	305 W South St	Hartford	SD	57033	Emergency Services
Fire Department	Garretson Volunteer Fire Department	613 3rd St	Garretson	SD	57030	Emergency Services
Fire Department	Renner Volunteer Fire and Rescue	47424 258th St	Renner	SD	57055	Emergency Services
Fire Department	Brandon Volunteer Fire Department	401 N Sioux Blvd	Brandon	SD	57005	Emergency Services
Fire Department	Minnehaha Country Search & Rescue	608 Sigler Ave	Sioux Falls	SD	57104	Emergency Services
Fire Department	Sioux Falls Fire Rescue	301 S Sycamore Ave	Sioux Falls	SD	57110	Emergency Services
Emergency Management	Minnehaha Emergency Management	608 Sigler Ave	Sioux Falls	SD	57104	Emergency Services
Ambulance	Dell Rapids Ambulance	909 Iowa Ave	Dell Rapids	SD	57022	Emergency Services
Ambulance	Garretson Ambulance Services Office	638 N Main Ave	Garretson	SD	57030	Emergency Services
Ambulance	Med-Star Paramedic Ambulance, INC	922 E Redwood Blvd	Brandon	SD	57005	Emergency Services
Ambulance	Sanford Air Med	4215 N Maverick Pl	Sioux Falls	SD	57104	Emergency Services
Ambulance	Sanford Intensive Air	2 W Weather Ln # 6	Sioux Falls	SD	57104	Emergency Services
One-Call	South Dakota One-Call	P. O. Box 187	Rapid City	SD	57709	Others
Commission	Public Utilities Commission	500 E Capitol Ave	Pierre	SD	57501	Others