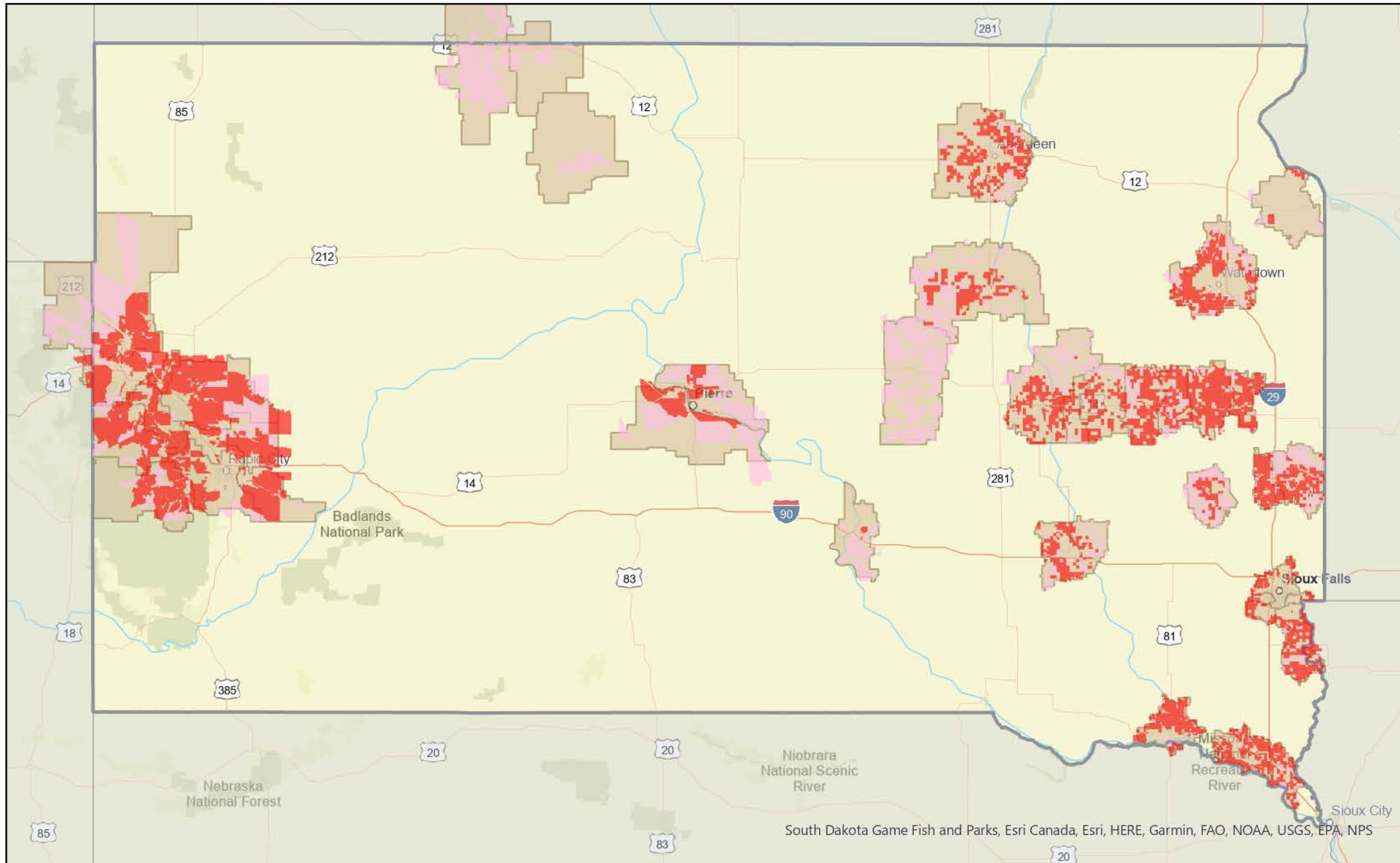


2021 CAF II Units Enabled

Wire Center CILLI Code	Wire Center	2021 Units Enabled
ABRDSDCO	Aberdeen	263
ARTNSDCO	Arlington	242
BLFRSDCO	Belle Fourche	141
BLHKSDCE	Black Hawk	52
CAVRSDCO	Cavour	90
CHBLSDCO	Chamberlain	6
CLMNSDCO	Colman	66
CNTNSDCO	Canton	62
DDWSDCO	Deadwood	215
DESMDCO	De Smet	74
ELPNDCO	Elk Point	153
FLNDCO	Flandreau	41
FTPRSDCE	Fort Pierre	20
HLCYSDCO	Hill City	831
HRBGSDCO	Harrisburg	13
HURNSDCO	Huron	194
IRQSDCO	Iroquois	110
LEADSDCO	Lead	148
LKPRSDCO	Lake Preston	95
MDSNSDCE	Madison	42
MLBNSDCO	Milbank	72
MTCHSDCO	Mitchell	123
PIRRSDCO	Pierre	38
RDFSDCO	Redfield	115
RPCYSDCO	Rapid City	282
RPVYSDCO	Rapid Valley	51
SPRFSDCO	Spearfish	60
STRGSDCO	Sturgis	105
SXFLSDCO	Sioux Falls Main	78
SXFLSDSE	Sioux Falls Se	0
SXFLSDSW	Sioux Falls Sw	48
TEA SDCO	Tea	40
VOLGSDCO	Volga	118
VRMLSDCO	Vermillion	155
WHWSDCO	Whitewood	39
WRWKSDCO	Warwick	123
WTTWSDCO	Watertown	169
YNTNSDCO	Yankton	237
Total		3,801

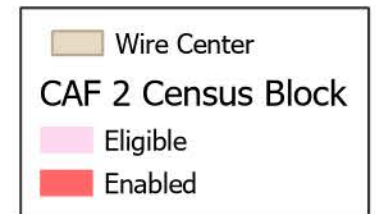
LUMEN® South Dakota CAF 2 Enabled & Eligible Areas



Program Target
15,071

Enabled Locations
15,963 (105.9%)

Attachment H



CAF Enabled Census Blocks contain at least 1 location that qualifies for 10/1 as of December 31, 2021. Not all locations in the census block may qualify for broadband or the 10/1 speed. CAF Eligible Census Blocks are without at least 1 location qualifying for 10/1 as of December 31, 2021. Under the CAF program Lumen has the flexibility to deploy to CAF 2 eligible census blocks identified by the FCC. The identification of an area as CAF 2 eligible does not indicate a commitment to deploy high speed internet to the area. For verification of unique addresses or locations, contact your local Lumen representative. Portions of the map data are ©2006-2021 TomTom and portions of the map data are ©2022 Lumen.