

SOUTH DAKOTA PUBLIC UTILITIES COMMISSION
TRIBAL LIFELINE/LINKUP ADVERTISING/OUTREACH
ANNUAL REPORT
JULY 1, 2016

Company: Cheyenne River Sioux Tribe Telephone Authority

Address: PO Box 810
100 Main Street
Eagle Butte, SD 57625

Telephone Number: (605) 964-2600

Company Contact: Jo Beth Dupris

Study Area Code: 391647

Tribal Lifeline/Linkup Advertising/Outreach Activities:

Advertise in media of general distribution. *(See attached advertisement(s).)

Letter to existing and new customers regarding the availability of Tribal Lifeline/Linkup. * (See attached letter.)

Company's Tribal Lifeline/Linkup information in directory.

Company's Tribal Lifeline/Link Up information available on Company website.

Company's information posted on USAC website.

Tribal Lifeline/Linkup Brochure

*Required

OBITUARIES

Leland "Lee" Wilson Logg



Funeral services for Leland "Lee" Wilson Logg age 39 of Eagle Butte, WEREe at 1:00 P.M., Tuesday, November 10, 2015 at the Old Agency Building in Eagle Butte. A meal will be held at 11:00 a.m. Tuesday. Burial will be in the congregation cemetery in LaPlante under the direction of Kesting Funeral Home of Moberidge. An all-night wake will start at 7 PM Monday at the Old Agency Building. Lee was found Saturday, October 31, 2015 near Eagle Butte, SD.

Leland "Lee" Wilson Logg "Wambli Hoksila" was born on August 1, 1976 at Ft. Carson, CO. to Leland and Robyn Logg. Lee

entered the spirit world on October 6, 2015. Lee's family included brothers, Terry, Jason, and Les, and sister, Joy Logg.

Lee married MaShawn White Wolf and his children were Traden, Trevor, Jason, Layken Logg and Chantel Shepard. His nieces and nephews are Jaxson, Ryker, Aftan, Brooklyn, Rian, Kiana Logg of Eagle Butte, and Alexandria, Caleb, Lawson Sadowski of St. Paul, MN. Lee had a little dog named "Peanut" who meant the world to him.

Lee graduated from Cheyenne-Eagle Butte in 1994 and participated in all sports with all-state honors in basketball. After his military service Lee played college basketball at the United Tribes in Bismarck, ND, and Huron University in South Dakota. He fondly talked about playing with his brother, Jason as they were an inside/outside combination.

In the US Army, Lee was a paratrooper with the 82nd Airborne and was proud of his service.

Lee's jobs were in physical fitness area and was a certified personal trainer.

He was preceded in death by his brother, Jason Logg, maternal grandparents, Raymond and Pearl White Eagle, and paternal grandmother, Rachel Logg.

Rochelle Ducheneaux

Rochelle Ducheneaux, 70, of rural Gettysburg, passed away, Sunday, November 8, 2015 at her home surrounded by her family.

Funeral services are currently pending.

Lucre Funeral Chapel of Eagle Butte has been entrusted with Rochelle's arrangements.

David "Butch" Thompson

Funeral services for David "Butch" Thompson, 71, of Timber Lake, SD, will be 11:00 a.m. Friday, November 13, 2015 at the Timber Lake Community Center.

Burial will be in St. Mary's Episcopal Cemetery in Promise under the direction of Kesting Funeral Home of Moberidge.

Visitation will be Thursday, Nov. 12, 2015 from 4PM to 7PM at the funeral home.

Butch passed away on Sunday, November 8, 2015, at the Moberidge Regional Hospital of Moberidge, SD.



Pierre Monument Company
Family Memorials by Gibson
423 S. Pierre St. • Pierre, SD 57501
Your Life Is A Story, Tell It Well
I am available in your area by appointment.
Payment Plans
*Signage *Cemetery Lettering
*Yard Rocks *Markers
pierremonument@gmail.com
gibsonmonuments.com


Jeanine Maskovich
605-295-4980
800-658-2294

UPELL MEDICAL CLINIC

Monday through Friday
Clinic hours: 8:00 a.m. - 5:00 p.m.
Closed from 12 NOON to 1 p.m.

Dr. Margaret Upell

By Appointment Only
Clinic phone: 605-964-7700

 This institution is prohibited from discriminating on the basis of race, color, national origin, sex, age or disability.

Your Questions & Answers

Social Security Administration
Howard I. Kossover, Public Affairs Specialist

Q: Will the amount I can earn before my Social Security retirement is reduced change in 2016?

A: The 2016 amounts will be the same as for 2015. They are not changing.

The annual retirement earnings test concerns how your own employment in a year affects your Social Security retirement or survivors benefits in that year. It includes only your personal gross wages or net self-employment for the full calendar year. Your other income or income of a spouse is not applicable.

As of when I wrote this, the Retirement Planner section of the Social Security website at www.socialsecurity.gov/planners/retire/, shows only 2015, but this same information will apply for 2016. Since there is not a 2016 cost-of-living adjustment (COLA) change, the earnings test amounts will not change either.

COLA information on the SSA website has the 2016 earnings test amounts and states that "The earnings limit for workers who are younger than "full" retirement age (age 66 for people born in 1943 through 1954) will remain \$15,720. (We deduct \$1 from benefits for each \$2 earned over \$15,720.)

The earnings limit for people turning 66 in 2016 will stay at \$41,880. (We deduct \$1 from benefits for each \$3 earned over \$41,880 until the month the worker turns age 66.) There is no limit on earnings for workers who are "full" retirement age or older for the entire year."

The earnings test does not apply to people receiving benefits due to their own disability. If receiving disability, contact Social Security before working.

Q: Can I use the Social Security online retirement application even if already on Medicare?

A: Yes, you can. Complete your retirement application about 3 months before you want benefits to begin. You can file online for Social Security retirement, just for Medicare or for both retirement and Medicare.

If already receiving Social Security benefits when reaching age 65, you cannot file online for Medicare because Medicare information is automatically sent to you.

Online SSA applications are available to apply for benefits as a spouse or for disability. More Social Security online services are at www.ssa.gov/onlineservices/.

Based in Grand Forks, Howard I. Kossover is the Social Security Public Affairs Specialist for North Dakota and western Minnesota. Send general interest questions to him at howard.kossover@ssa.gov. Read his online articles at <http://socialsecurityinfo.areavoice.com/>.

 "Our Family Caring for Yours"
Serving our Rural Communities

With Locations in:
Bison 605-244-5206 • Eagle Butte 605-964-8000
Faith 605-967-2644 • Isabel 605-466-2120
McIntosh 605-273-4335
www.prairiecommunityhealth.com

Specialties:
Complete Family Care, Immunizations,
DOT Physicals, VA Outreach, Patient Portal,
Sliding Fee, and Health Insurance Marketplace

Community Worship Schedules

All Saints Catholic, Eagle Butte
Fr. Dan Juch, Pastor & Fr. John Paul Trask, Associate Pastor
Saturdays - 5:00 p.m. • Sundays - 8:30 a.m.

Sacred Heart Catholic, Dunree
Fr. Dan Juch, Pastor & Fr. John Paul Trask, Associate Pastor
Wednesdays - 6:30 p.m. • Saturdays - 6:30 p.m.

UCC Church, Eagle Butte Pastor Pauline Welsh
Sundays - September - December 9:00 a.m. Sundays
UCC Church, Dunree
Pastor Pauline Welsh • September - December 11:00 a.m. Sundays

Lutheran Church, AELC Rev. Mark Richardson
Sundays - 9:00 a.m. • Wednesdays - Kids Bible School (4 years - 6th grade) 4:30-5:30
and Youth Group (7th-12th grade) 6:00-8:00

The Church of Jesus Christ of Latter-day Saints (Mormon)
10:00 a.m. Sundays • Sun. School 11:20 a.m. • Priesthood Relief Society 12:00 p.m.
Lighthouse Ministries • Pastor Brent Cony
10:30 a.m. Sundays • 6:00 p.m. Wednesdays

Eagle Butte Church of God • Addie Morris, Pastor • 10:00 a.m. Bible Study • All
11:00 a.m. Worship • 3:00 p.m. Worship - Residents of Evergreen Arpts.
7:00 p.m. Sunday Worship • 7:00 p.m. Thursday Bible Study

1st Baptist Church of Eagle Butte • Pastor Ron Ferrar • 9:30 a.m. Children's Church
11:00 a.m. Worship Service • 6 p.m. Wednesday Adult Bible Study

Cheyenne River Episcopal Mission
Emmanuel, White Horse, 1st Sundays 11am (CT)
St. Thomas, On the Tree, 1st Sundays 2pm
St. John's, Eagle Butte, Every Sunday 10am, Holy Communion 2nd Sunday
St. Andrew's, Cherry Creek, 2nd Sunday, 1pm • St. Phillip's, Dunree, 3rd Sunday, 10am
St. Peter's, Thunder Butte, 3rd Sunday, 1pm • St. James's, Bear Creek, 3rd Sunday, 4pm
Ascension, Black Foot, 4th Sunday, 11am (CT)
St. Mary's, Promise, 4th Sunday, 2pm (CT)

Evangelical Lutheran Church, Dunree • Pastor Tom Crow
10:00 a.m. Sundays • 6:30 p.m. Sundays • 6:30 p.m. Thursdays

Cabarré Chapel Fellowship, Dunree
Pastor Chae Carreau Sunday Serv. - 10 a.m.

La Plant Baptist Church - Pastor Matthew Dickerson
12:30 p.m. CST Sunday Family Worship • 7 p.m. CST Wednesday Children's Outreach
Whitehorse Community Center

Warriner for Christ Baptist Church - Pastor Matthew Dickerson
10 a.m. CST Sunday Family Worship at Bob's Retreat Lot #743
4 p.m. CST Sunday Children's Outreach, Swiftwind Community Center

Cherry Creek Memorial Church - Pastor Merle Beady (598-4318)
Sunday Morning Service - 10:00 a.m. • Sunday School - 11:00 a.m.
email: nancy@westriveragle.com or call 964-2100
to update or be added to the Church Calendar

Wouldn't you like to SAVE every month?

Then the Tribal Lifeline and Linkup Program might be for you!

What is Lifeline?.... Discounted Telephone Service

What is Linkup?.... Reduction for connection (installation charges) for basic home telephone service

YOU are eligible if you receive assistance from one of the following:

- Medicaid
- Bureau of Indian Affairs (BIA) General Assistance
- Federal Public Housing Assistance (FPHA) or Section
- Tribally Administered Temporary
- Low Income Home Energy Assistance Program (LIHEAP)
- Assistance to Needy Families (TANF)
- Supplemental Security Income (SSI)
- National School Lunch Program's free lunch program
- Supplemental Nutrition Assistance Program (SNAP)
- Food Distribution Program on Indian Reservations
- Temporary Assistance for Needy Families (TANF)
- Household Income falls below 135%
- Head Start (Income eligible)
- of the federal poverty guidelines

How Do You Apply?.... For an application and/or more information please call: 1-888-587-7035.

If you are eligible, you will be mailed a Lifeline/Link-Up Application from SOLIX. For more information contact:

Cheyenne River Sioux Tribe Telephone Authority

(605) 964 2600 • 100 Main Street • P.O. Box 810 • Eagle Butte, SD 57625

Bohning

Continued from Page 4

Gugliotta discovered just how highly esteemed Bohning was in the eyes of Caribbean politicians one morning when George Price, the eccentric but charming prime minister of Belize, popped in without warning at the old Herald building on Biscayne Boulevard, having flown to Miami and then taking a bus to see Bohning for an impromptu chat. Minutes later, two harried Secret Service agents burst into the Herald lobby, frantic that their charge had wandered away. Bohning was nonplussed neither by the arrival of Price nor that of the distraught agents. His patience and tranquility in the face of maddog dictators and penurious publishers were

legendary. He stayed calm even in the face of the serial catastrophes that marked his attempt to cover the U.S. invasion of Grenada in 1983. The U.S. military was barring reporters from the scene, but Bohning and five other reporters hired a smuggler with a speedboat in St. Vincent and the Grenadines to slip them in. Making its final run to shore through bombing and artillery fire, the boat capsized, destroying all Bohning's notes and recordings. Reaching shore, in a surreal landscape of bombed damage strewn with corpses and a chorus of barking madmen who escaped from a nearby asylum when it was mistakenly bombed, Bohning and the rest of the

group were arrested first by a left-wing children's militia and then by the U.S. military, which held them incommunicado on a naval vehicle, unable to file their stories. "Everybody else was furious and screaming at each other, but Don just stayed calm, figuring it would all get sorted out sooner or later," recalled Diederich, who was part of the group. "He was always like that. The only time I ever saw him a little flustered, maybe, was in Nicaragua in 1979, when the Somoza government was falling to rebels, and one of Somoza's mercenaries came to Don's hotel room and robbed him."

What left permanent scars on Bohning's soul, though, was not the robbery in Managua but covering the 1978 mass suicide of the Peoples Temple cult in Guyana. It left him quiet and depressed for months. "Don was at the airport in Georgetown, the capital, where aircraft after aircraft was landing, bringing back the bodies from the jungle," remembers former Herald photographer Tim Chapman, who also covered the story. "So he saw every single one of those 912 bodies or exactly however many it was come in. And remember, a third of them were children; the People Temple members weren't just killing themselves, they were murdering their own children, too."

"We talked about it many times — that's an exclusive club, those of us who saw it, and it never leaves you, and there's no way of really describing it to anyone else — and he never really got over it. 'At least in a revolution, you can figure out why people are killing each other,' he would say. 'But this never made any sense.' Don, when he covered a story, always wanted to know why, and Guyana didn't have a why."

Bohning is survived by his son, Lee, of Colorado, and daughter, Lori, of central Florida; and by his wife of 60 years, former Barry University education professor Gerry Bohning. He was holding her hand when he died.

A friendship gathering will be held at 10 a.m. Tuesday at the Fred Hunter Funeral Home at 2401 S. University Dr. in Davie. A brief service will be held at 10:30 a.m., followed by a procession to the cemetery.

Parade of Trees

The Dupree School's Math/Art Committee is once again hosting their "Parade of Trees" in conjunction with the Christmas concert on Wednesday, Dec. 9th at 1:30 p.m. We encourage any community group to bring decorated trees to the school before Dec. 9. Interested groups may contact any committee member. Please call 365-5140. Committee members are: Pamela Ross, Susie De La Rosa, Tether Lundberg Tracie Henderson, Corrina Thompson, Eunice Moudy.

Stray Thoughts

What Kids Should Learn

By Mark Peacock

Kids should learn to listen, not to make the teacher smile but to pave the way for what they have to say. When their own words are on trial. Kids should learn to figure, both in groups and all alone if they can figure it out it will give them clout when they're out there on their own. Kids should learn to think, and not just from their own side to see truth and lies through their neighbor's eyes, with a mind that's open wide. Kids should learn to do, on their own, from start to stop if they learn to climb on their own time, they can make it to the top. Kids should learn to create, through music, art and dance through their own hands they'll understand, why the creative take that chance. Kids should learn to contemplate, to anticipate what will come to pass to wait their turn will help them learn to be patient and to have class. Kids should learn about the old, how they succeeded and what it took what their elders know will help them grow, and you can't learn this from a book. Kids should learn to speak, what's on their mind, what's in their soul and try leadership on and not be a pawn, so they don't have to fill that role. Kids should learn to cooperate, to help as members of a team to set ego aside, along with their pride, and help others with a shared dream. Kids should learn to tire, from working hard for what they need if their time is lost for the price it cost, they will learn this well, indeed. Kids should learn of value, what money is and what it's not what it can't buy no matter how you try, some things take more than you've got. Kids should learn to sweat, to work out by their own direction not for their team, but for self-esteem, and for their own health and protection. For kids to learn what they should know, they need to focus while they're in school they must learn to try, and not just get by, or they will end up the fool.

Look into the Lifeline and Linkup Program!



What is Lifeline?
Discounted Telephone Service
What is Linkup?
Reduction for connection
(installation charges) for basic home telephone service

YOU are eligible if you receive assistance from one of the following:

- Medicaid
- Federal Public Housing Assistance (FPHA) or Section 8
- Low Income Home Energy Assistance Program (LIHEAP)
- Supplemental Security Income (SSI)
- Supplemental Nutrition Assistance Program (SNAP)
- Temporary Assistance for Needy Families (TANF)
- Head Start (Income eligible)
- Bureau of Indian Affairs (BIA) General Assistance
- Tribally Administered Temporary Assistance to Needy Families (TTANF)
- National School Lunch Program's free lunch program
- Food Distribution Program on Indian Reservations
- Household Income falls below 135% of the federal poverty guidelines

Apply by calling 1-888-587-7035 for an application or more information. If you are eligible, you will be mailed a Lifeline Link-Up Application from SOLIX. For more information contact:



Cheyenne River Sioux Tribe Telephone Authority
100 Main Street • PO Box 810 • Eagle Butte, SD 57625
(605) 964-2600

Answering your questions....

Since announcing that the *Timber Lake Topic* and *Isabel Dakotan* will be combined as of January 1, 2016, we have had many positive and encouraging comments and messages. **Thank you!**

We have also had a few questions, which we will try to answer in the coming weeks.

QUESTION: Will the paper still have the same news and other things in it?

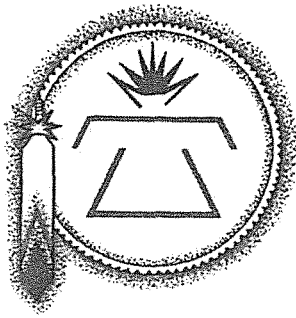
ANSWER: We plan to continue to provide good news coverage of the area we serve. The content of the paper will be driven by the news that is happening. We will try to attend as many meetings and events as possible. We will have court reports, police reports, property transfers, weather and other "On the Record" information. We think readers will expect to see feature stories, an editorial page, sports and lots of photos. We ask readers to send in baby announcements, engagements, weddings, anniversaries and obituaries. (We do not charge for obituaries.) We will also print a calendar of events each week

and each month and continue popular features such as the stories from past issues of both the *Topic* and the *Dakotan*. The crossword puzzle will be new to *Topic* readers and a bonus for *Dakotan* subscribers will be Jack Bickel's "Sparks from Firesteel" column and Karen Holzer's feature stories. We are open to suggestions for changes and additions and we ask you to please let us know what you expect from your newspaper.

Have questions?

Call Kathy or Bob at 605-865-3546,
605-466-2258 or 605-760-9182,
or 1-800-664-3546





C.R.S.T. Telephone Authority

March 1, 2016

Dear C.R.S.T. Telephone Authority Customer,

Please read this letter carefully.

Individuals who reside on tribal lands and meet the eligibility criteria may qualify for discounts [on the telephone bill] through **Tribal Lifeline and Tribal Link Up programs**. Tribal lands are defined as any federally-recognized Indian tribe's reservation, pueblo, or colony; Indian Allotments; and areas that fall outside the boundaries of existing Tribal lands but have been designated by the Federal Communications Commission as Tribal lands for the purpose of receiving Tribal Lifeline and Tribal Link Up support.

Tribal Lifeline helps eligible residents of tribal lands save up to \$34.25 on their monthly phone bill. The discount applies to wireline or wireless residential telephone service plans and is limited to one line per household. **Tribal Link Up** provides a one-time discount for the connection or activation charge for new telephone service at the applicant's primary residence. The discount is a 100 percent reduction, up to \$100, of the customary charge to initiate telecommunications service. Link Up also allows you to pay any remaining amount owed on initiation of service (up to \$200) on a deferred schedule, interest free.

Eligible consumers may also be able to sign up for free toll blocking or toll limitation service that either blocks or limits long-distance calls from your phone.

Both programs have eligibility requirements. You may qualify if you, one or more of your dependents, or your household participates in any of the following programs:

- Medicaid (example, Title XIX/Medical State Supplemental Assistance)
- Supplemental Security Income (SSI)
- Low-Income Home Energy Assistance Program (LIHEAP)
- Federal Public Housing Assistance (Section 8)
- Supplemental Nutrition Assistance Program (SNAP, formerly known as food stamps)
- Temporary Assistance for Needy Families (TANF)
- National School Lunch Program's Free Lunch Program
- Bureau of Indian Affairs General Assistance
- Tribally-Administered Temporary Assistance for Needy Families (TTANF)
- Head Start (if income eligibility criteria are met)
- Food Distribution Program on Indian Reservations
- Or, if your household income is no more than 135% of the federal poverty income guidelines (*see table below*).

| 2016 Health & Human Services Poverty Guidelines | | | |
|---|-------------------------|---------------------|-------------------------|
| Number in Residence | 135% Guideline (Annual) | Number in Residence | 135% Guideline (Annual) |
| 1 | \$16,038 | 5 | \$38,394 |
| 2 | \$21,627 | 6 | \$43,983 |
| 3 | \$27,216 | 7 | \$49,586 |
| 4 | \$32,805 | 8 | \$55,202 |

For each additional person after 8, add \$5,616 to the annual guideline.

Federal Register, Vol. 81, No. 15, January 25, 2016, pp. 4036-4037
(Applicable to the 48 contiguous states and the District of Columbia only.)

100 Main Street ★ PO Box 810 ★ Eagle Butte, SD 57625
(605) 964-2600 Phone ★ (605) 964-1000 Fax

To apply for **Tribal Lifeline** or **Tribal Link Up on Tribal Lands**, contact Solix at 1-888-587-7035 for a Tribal Lifeline or Tribal Link Up Assistance Application, complete the form, and then return it to **Lifeline Administrator, 30 Lanidex Plaza West, PO Box 685, Parsippany, NJ 07054-0685**. A representative from Solix will contact you to verify your eligibility and complete the application process. You will be required to provide documentation to prove eligibility.

Important Information

- Not all telephone providers in South Dakota offer the Tribal Lifeline and Tribal Link Up discounts.
- Tribal Lifeline is available on only one line per household. A household is defined as any individual or group of individuals living together at the same address as one economic unit. An "economic unit" consists of all adult individuals contributing to and sharing in the income and expenses of a household. A household may include related and unrelated persons.
- Tribal Lifeline and Tribal Link Up discounts cannot be applied to past due telephone bills.
- It can take up to two months for the discounts to show up on your bill as a credit. You must pay the bill until that time.
- Tribal Link Up will not cover the cost of a phone or wiring your home.
- You must notify C.R.S.T. Telephone Authority when you no longer qualify for the program.

Tribal Lifeline and Tribal Link Up Telephone Assistance Programs Proof of Eligibility

If you qualify for Tribal Lifeline or Tribal Link Up based on income, you may be asked to provide proof of your income. The following documents are acceptable proof:

- Last year's state, federal or tribal tax return
- Current income statement from an employer or paycheck stub
- A Social Security statement of benefits
- A Veterans Administration statement of benefits
- A retirement/pension statement of benefits
- An Unemployment/Worker's Compensation statement of benefits
- A federal or tribal notice letter of participation in General Assistance
- A divorce decree, child support award, or other official document containing income information

If the prospective subscriber presents documentation of income that does not cover a full year, such as current pay stubs, the prospective subscriber must present the same type of documentation covering three consecutive months within the previous 12 months.

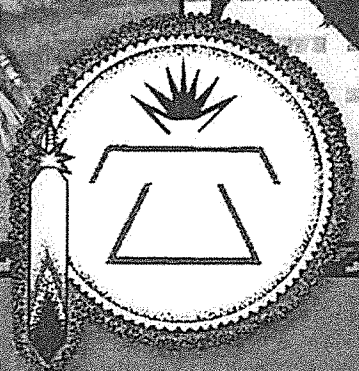
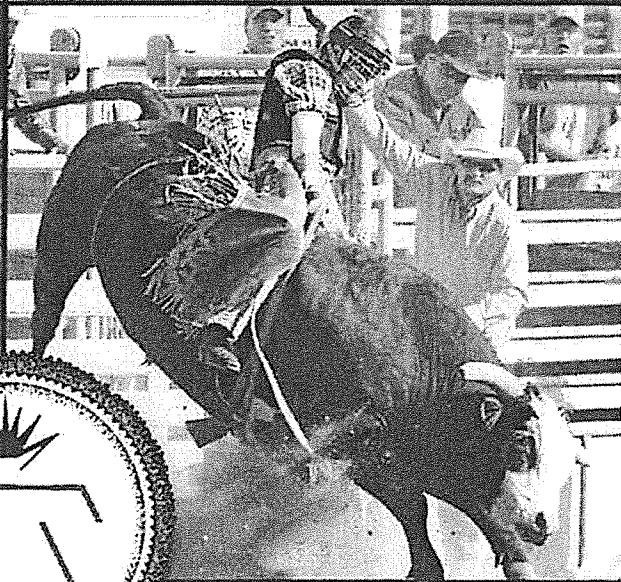
If you qualify for Tribal Lifeline or Tribal Link Up based on **program-based eligibility**, you may be asked to provide proof of your eligibility. The following documents are acceptable proof:

- The current or prior year's statement of benefits from a qualifying assistance program
- A notice or letter of participation from a qualifying assistance program
- Program participation documents
- An official document demonstrating that the prospective subscriber, one or more of the prospective subscriber's dependents, or the prospective subscriber's household receives benefits from a qualifying assistance program.

Sincerely,

C.R.S.T. Telephone Authority

2015
LOCAL EXCHANGE DIRECTORY



CHEYENNE RIVER SIOUX TRIBE
TELEPHONE AUTHORITY

S

State of South Dakota
 Dept. of Health-Isabel466-2474
 Extension Office.....964-4955
 Highway Dept.-Dupree.....365-5169
 Highway Dept.-EB.....964-4361
 Highway Dept.-Isabel.....466-2160
 Social Service-Dupree.....365-5175
 Social Service-EB964-4484
 Strong Heart Study.....964-1260
 Sturdevants Auto Parts964-4686
 Subway.....964-2900

T

Takini School.....538-4399
 Talent Search Program.....964-7621
 Tax Express.....964-4333
 Ted's Cars.....733-2274
 Ted's Service.....733-2415
 The Emporium466-2223
 The Lighthouse365-5237
 The Main.....964-8200
 The Outrider Café964-2469
 The Plains Clothiers.....964-4610
 Three Rivers Mental Health964-4210
 Tiospaye Topa School.....733-2290
 Tire Shop.....538-4482
 Titles of Dakota, Inc.....365-5248
 Tri County Chiropractic466-2050
Tri County Water
 Intake Station964-3834
 Intermediate Station964-6763
 Water Office.....964-7766

U

United Veterans Beacon House.....733-2656
 Upell Margaret Dr.....964-7700
US Post Office
 Cherry Creek.....538-4264
 Dupree.....365-5110
 Eagle Butte.....964-6633
 Isabel.....466-2165
 Lantry.....964-8018
 Ridgeview733-2400
 White Horse733-2520
 USDA National Finance Center964-8118

V

Vilas Drug.....964-8955
 Vision Care Associates.....964-2010

W

Walter Miner Law Enforcement
 Administration Office964-4567
 Adult Detention.....964-2157
 Adult Detention Admin.....964-6505
 Jail.....964-2155

W

Walter Miner Law Enforcement
 Juvenile Detention964-4577
 Patrol Division.....964-4576
West River Eagle
 Eagle Butte Office.....964-2100
 Dupree Office.....365-5145
 West Winds Home Health.....964-7617
 Western Dakota Bank964-6300
 Wheatridge Apartments964-3214
 White Horse Community Bldg.....733-2465
 Wind Swept Academy964-7600

Z

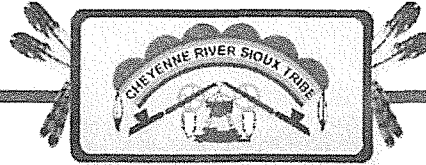
Ziebach County
 Assessor365-5129
 Attorney365-5171
 Auditors365-5157
 Clerk of Courts.....365-5159
 Extension365-5161
 Health.....365-5170
 Register of Deeds365-5165
 Sheriff365-5177
 States Attorney.....365-5172
 Treasurer365-5173

TOLL FREE NUMBERS

Dept. of Public Safety 1-800-952-3696
 Dewey County Courthouse 1-800-894-3501
 Lakota Network Help Desk..... 1-866-264-7802
 * Lifeline/Linkup 1-888-587-7035
 Moreau Grand ElectricCoop 1-800-952-3158
 Exede/WildBlue Support 1-888-256-8372

Telephone Authority After Hour Outage
964-5555

Cheyenne River Sioux Tribe



Telephone Authority

[Home](#)

[About Us](#)

[Help/FAQ](#)

[Links & Resources](#)

[Contact Us](#)

The C.R.S.T. Telephone Authority offers many valuable services for our customers from basic telephone service to robust internet solutions.

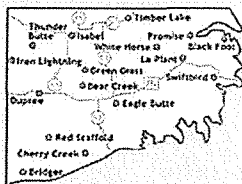
[Packages](#) | [Telephone](#) | [Internet & Network](#) | [Gas Company Services](#) | [Sales and Service Division](#) | [My Bill](#) |

Lifeline And Linkup Program

Telephone Services

- [Business Solutions and Benefits](#)
- [Control Features](#)
- [Convenience Features](#)
- [Long Distance Phone Solutions](#)
- [Service Order Charges](#)
- [Tribal Lifeline and Linkup Program](#)

Service Region



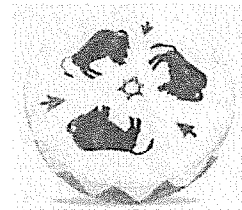
Telephone Directories

[Business & Residential Listings \(.pdf\)](#)

Tribal Lifeline And Linkup Program

You May Be Eligible For Discounted Telephone Service.

Qualifying customers who reside within the boundaries of the Cheyenne River Sioux Indian Reservation. This program can decrease your local monthly telephone service by as much as \$22.75 per month.



On January 01, 1998, the basic Lifeline and Linkup program was implemented. This program was designed to assist low-income consumers with the cost of basic telephone service. On October 01, 2001, the Enhanced Lifeline and Link-up rules were implemented. This "enhanced" program applies to low income consumers living on tribal lands.

Eligibility Requirements:

This low income federal telephone assistance program is available to eligible subscribers that are participating in at least one of the following public assistance programs:

- Bureau of Indian Affairs (BIA) general assistance program
- Federal Public Housing Assistance (Section 8)
- Food Distribution Program on Indian Reservations
- Supplemental Nutrition Assistance Program (SNAP, formerly known as food stamps)
- Head Start (meeting income qualifying standards)
- Household Income is at or below 135% of the Federal Poverty Guidelines
- Low Income Home Energy Assistance
- Medicaid (eg., Title XIX Medical State Supplemental Assistance)
- Supplemental Security Income (SSI)
- Tribally-Administered Temporary Assistance for Needy Families (TTANF)
- Temporary Assistance for Needy Families (TANF)
- National School Lunch Program's Free Lunch Program

2015 Poverty Guidelines for the 48 Contiguous States and the District of Columbia

| Persons in family/household | Poverty guideline |
|-----------------------------|-------------------|
| 1 | \$15,890 |
| 2 | \$21,506 |
| 3 | \$27,122 |
| 4 | \$32,738 |
| 5 | \$38,354 |
| 6 | \$43,970 |
| 7 | \$49,586 |

8

\$55,202

For families/households with more than 8 persons, add \$5.616 for each additional person.

How To Apply:

For an application and/or more information please call: 1-888-587-7035. If you are eligible, you will be mailed a Lifeline/Link-Up Application from Solix, Inc.

The Cheyenne River Sioux Tribe Telephone Authority (605) 964 2600 • 100 Main Street • P.O. Box 810 • Eagle Butte, SD 57625

© 2015 crstta.com. All Rights Reserved

[Site](#)

[Map](#)

COMPANIES NEAR ME

South Dakota

[← Back to map](#)

Clicking on the header label of each column will sort the table by that column.

| <u>Name</u> | <u>Phone</u> | <u>Service Type</u> |
|--|--------------|---------------------|
| AT&T Mobility | 800-377-9450 | Wireless |
| Budget Mobile | 888-777-4007 | Wireless |
| City of Brookings Telephone Fund | | Wireless |
| James Valley Wireless | 800-556-6525 | Wireless |
| Northern Valley Communications | 888-919-8945 | Wireless |
| Standing Rock Telecom | 701-854-7098 | Wireless |
| Northern Valley Communications | 888-919-8945 | Home Phone |
| Alliance Communications | 800-701-4978 | Home Phone |
| Beresford Municipal Telephone | 605-763-2500 | Home Phone |
| C.R.S.T. Telephone Authority | 605-964-2600 | Home Phone |
| CenturyLink | 800-244-1111 | Home Phone |
| City of Fairth Municipal Telephone Company | 605-967-2261 | Home Phone |
| Golden West Telecommunications | 855-888-7777 | Home Phone |
| ITC Telecom | 800-417-8667 | Home Phone |
| James Valley Telecommunications | 800-556-6525 | Home Phone |
| Jefferson Telephone Company | 712-271-4000 | Home Phone |
| Kennebec Telephone Company | 605-869-2220 | Home Phone |
| Midcontinent Communications | 800-888-1300 | Home Phone |
| Midstate Communications | 605-778-6221 | Home Phone |
| Midstate Telecom, Inc | 888-214-1431 | Home Phone |
| Mt. Rushmore Telephone Company | 605-666-4411 | Home Phone |
| RC Communications, Inc. | 800-256-6854 | Home Phone |
| Roberts County Telephone Cooperative Association | 800-256-6854 | Home Phone |
| Santel Communications | 888-978-7777 | Home Phone |
| SS Telecom | 605-676-6000 | Home Phone |
| Swiftel Communications | 605-692-6211 | Home Phone |

| | | |
|---|--------------|------------|
| Valley Telecommunications Cooperative Association | 605-437-2615 | Home Phone |
| Vast Broadband | 888-745-2888 | Home Phone |
| Venture Communications | 800-824-7282 | Home Phone |
| West River Telecom | 800-748-7220 | Home Phone |
| Western Telephone Company | 800-824-7282 | Home Phone |

[⇌ Back to map](#)

AN OVERVIEW OF TRIBAL LIFELINE AND TRIBAL LINK UP

Individuals who reside on tribal lands and meet the eligibility criteria may qualify for discounts (on the telephone bill) through the Tribal Lifeline and Tribal Link Up programs. Tribal lands are defined as any federally recognized Indian tribe's reservation, pueblo, or colony; Indian Allotments; and areas that fall outside the boundaries of existing Tribal lands but have been designated by the Federal Communications Commission as Tribal lands for the purpose of receiving Tribal Lifeline and Tribal Link Up support.

Tribal Lifeline helps eligible residents of tribal lands save up to \$34.25 on their monthly phone bill. The discount applies to wireline or wireless residential telephone service plans and is limited to one line per household.

Tribal Link Up provides a one-time discount for the connection or activation charge for new telephone service at the applicant's primary residence. The discount is a 100 percent reduction, up to \$100, of the customary charge to initiate telecommunications service. Link Up also allows you to pay any remaining amount owed on initiation of service (up to \$200) on a deferred schedule, interest free.

Eligible consumers may also be able to sign up for free toll blocking or toll limitation service that either blocks or limits long-distance calls from your phone.

LOOKING BACK AND MOVING FORWARD WITH C.R.S.T. TELEPHONE AUTHORITY

C.R.S.T. Telephone Authority began its formal organizational history in 1958 when the Cheyenne River Sioux Tribe purchased a privately owned telephone company from the Harding family. Chairman Frank Ducheneaux Sr. led the effort and \$105,000.00 later, the first tribal telephone company in the United States became reality. As a role model during the past 60 years, C.R.S.T. Telephone Authority has inspired eight other tribes to start their own telecommunication companies.

In recent years, C.R.S.T. Telephone Authority has been working diligently on getting customers cut over to the new fiber optic service from the old copper cable service in order to enhance services. As this project nears completion, C.R.S.T. Telephone Authority will be evaluating additional services such as Over the Top Television, Home Security Systems, and Prepaid Wi-Fi.

C.R.S.T. Telephone will celebrate 60 years of business in 2018, and we look forward to continuing our success into the next 60 years.

For more information about Tribal Lifeline or Tribal Link Up, just give us a call or stop by our office.

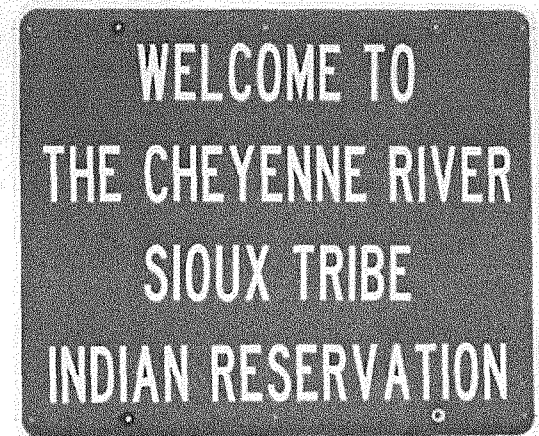


C.R.S.T.
Telephone Authority

100 Main Street
Eagle Butte, SD 57625
605-964-2600 • www.crstta.com

TRIBAL LIFELINE AND TRIBAL LINK UP

PHONE DISCOUNTS FOR ELIGIBLE RESIDENTS OF TRIBAL LANDS



ELIGIBILITY REQUIREMENTS

Both the Tribal Lifeline and Tribal Link Up programs have eligibility requirements. You may qualify if you, one or more of your dependents, or your household participates in any of the following programs:

- Medicaid (example, Title XIX/Medical State Supplemental Assistance)
- Supplemental Security Income (SSI)
- Low-Income Home Energy Assistance Program (LIHEAP)
- Federal Public Housing Assistance (Section 8)
- Supplemental Nutrition Assistance Program (SNAP, formerly known as food stamps)
- Temporary Assistance for Needy Families (TANF)
- National School Lunch Program's Free Lunch Program
- Bureau of Indian Affairs General Assistance
- Tribally-Administered Temporary Assistance for Needy Families (TTANF)
- Head Start (if income eligibility criteria are met)
- Food Distribution Program on Indian Reservations
- Or, if your household income is no more than 135% of the federal poverty income guidelines (see table below).

APPLICATION PROCESS

To apply for Tribal Lifeline or Tribal Link Up on Tribal Lands, contact Solix at 1-888-587-7035 for a Tribal Lifeline or Tribal Link Up Assistance Application, complete the form, and then return it to Lifeline Administrator, 30 Lanidex Plaza West, PO Box 685, Parsippany, NJ 07054-0685. A representative from Solix will contact you to verify your eligibility and complete the application process. You will be required to provide documentation to prove eligibility.

Important Information

- Not all telephone providers in South Dakota offer the Tribal Lifeline and Tribal Link Up discounts.
- Tribal Lifeline is available on only one line per household. A household is defined as any individual or group of individuals living together at the same address as one economic unit. An "economic unit" consists of all adult individuals contributing to and sharing in the income and expenses of a household. A household may include related and unrelated persons.
- Tribal Lifeline and Tribal Link Up discounts cannot be applied to past due telephone bills.
- It can take up to two months for the discounts to show up on your bill as a credit. You must pay the bill until that time.
- Tribal Link Up will not cover the cost of a phone or wiring your home.
- You must notify C.R.S.T. Telephone Authority when you no longer qualify for the program.

PROOF OF ELIGIBILITY

If you qualify for Tribal Lifeline or Tribal Link Up based on income, you may be asked to provide proof of your income. The following documents are acceptable proof:

- Last year's state, federal or tribal tax return
- Current income statement from an employer or paycheck stub
- A Social Security statement of benefits
- A Veterans Administration statement of benefits
- A retirement/pension statement of benefits
- An Unemployment/Worker's Compensation statement of benefits
- A federal or tribal notice letter of participation in General Assistance
- A divorce decree, child support award, or other official document containing income information

If the prospective subscriber presents documentation of income that does not cover a full year, such as current pay stubs, the prospective subscriber must present the same type of documentation covering three consecutive months within the previous 12 months.

If you qualify for Tribal Lifeline or Tribal Link Up based on program-based eligibility, you may be asked to provide proof of your eligibility. The following documents are acceptable proof:

- The current or prior year's statement of benefits from a qualifying assistance program
- A notice or letter of participation from a qualifying assistance program
- Program participation documents
- An official document demonstrating that the prospective subscriber, one or more of the prospective subscriber's dependents, or the prospective subscriber's household receives benefits from a qualifying assistance program

2016 HEALTH & HUMAN SERVICES POVERTY GUIDELINES

| Number in Residence | 135% Guideline (Annual) | Number in Residence | 135% Guideline (Annual) |
|---------------------|-------------------------|---------------------|-------------------------|
| 1 | \$16,038 | 5 | \$38,394 |
| 2 | \$21,627 | 6 | \$43,983 |
| 3 | \$27,216 | 7 | \$49,586 |
| 4 | \$32,805 | 8 | \$55,202 |

For each additional person after 8, add \$5,616 to the annual guideline.

Federal Register, Vol. 81, No. 15, January 25, 2016, pp. 4036-4037 (Applicable to the 48 contiguous states and the District of Columbia only.)

CHEYENNE RIVER SIOUX TRIBE TELEPHONE AUTHORITY
391647

Line 1222 Details on the number of minutes provided as part of the plan.

The C.R.S.T. Telephone Authority only provides its lifeline customers a flat rate local service. There is no measured local service provided, so the number of minutes provided is not necessary.

Line 1223 Additional charges for toll calls, and rates for each such plan.

The C.R.S.T. Telephone Authority provides access to toll service providers for its lifeline customers. The lifeline customer has to choose its own toll service provider, so no additional charges are noted or required by the C.R.S.T. Telephone Authority.