

TO: COMMISSIONERS AND ADVISORS
FROM: LORENA REICHERT AND KRISTEN EDWARDS
SUBJECT: TC13-026 – BIENNIAL CERTIFICATION OF STUDY AREA BOUNDARIES
DATE: FEBRUARY 11, 2019

STAFF MEMORANDUM

In June 2013, the Commission approved the study area boundaries (SABs) of incumbent local exchange carriers (ILECs) in South Dakota. Commission Staff (Staff) then filed those SABs with the FCC. On January 9, 2014, the Federal Communications Commission (FCC) released an Order¹ clarifying that annual updates of SAB changes made as of December 31 of the previous year must be submitted by March 15 of each year, with biennial certifications required when no changes are made.

In March of 2014, Staff requested the Commission delegate to Staff the authority to certify SAB changes with certain exceptions. The Commission granted Staff's request and delegated the authority "to certify [SAB] changes with the exceptions that the Commission will certify the [SABs] biennially and if any ILEC disputes Staff's authority in this matter, it may petition the Commission for relief."²

The Commission last biennial certification, which captured all boundary changes made through December 31, 2016, was made through an order dated March 17, 2017.³ The last SABs the Commission certified in March 2017 were submitted to the FCC by Staff on March 17, 2017.

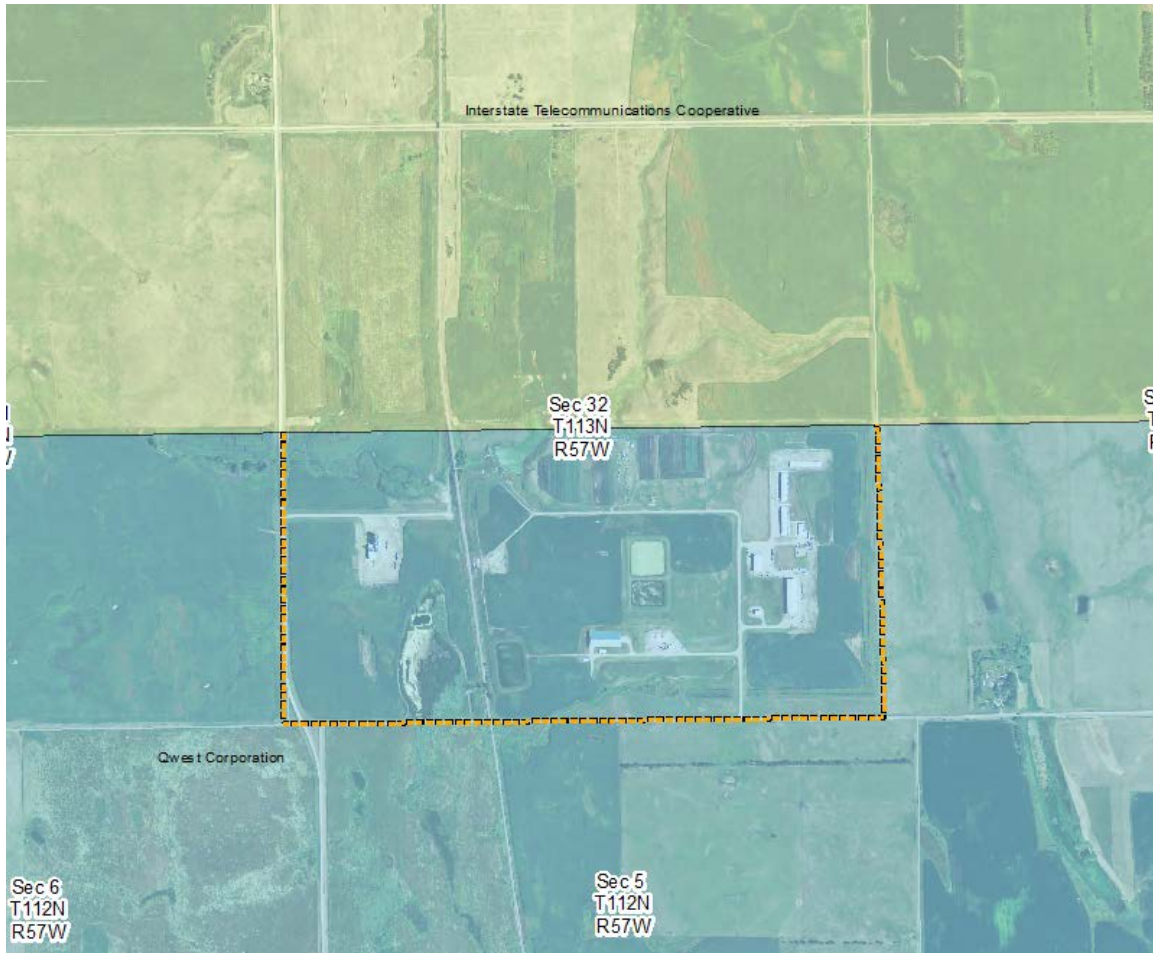
Therefore, Staff has reopened docket TC13-026 for the Commission to complete its biennial certification of the South Dakota SABs for 2019. All parties to the Commission's past certifications were made aware of the docket reopening and were instructed to review their SABs. No parties identified any additional boundary changes needed at this time. That being so, Staff is aware of only two boundary changes that have occurred since December 31, 2016, dockets TC17-023 and TC17-061, shown below.

¹ http://transition.fcc.gov/Daily_Releases/Daily_Business/2014/db0109/DA-14-28A1.pdf

² See Docket TC13-026: Order Delegating Authority to Certify Study Area Boundary Changes (<https://puc.sd.gov/commission/orders/telecom/2014/TC13-026.pdf>)

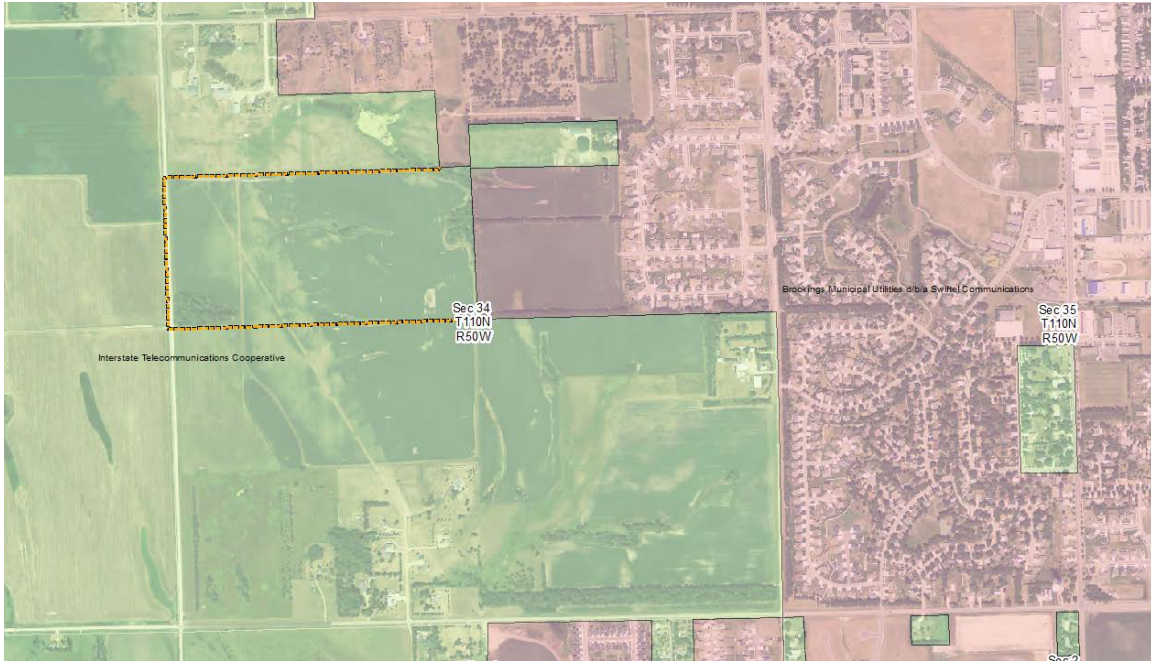
³ See Docket TC13-026: Order Certifying Study Area Boundary Changes (<http://puc.sd.gov/commission/orders/telecom/2017/TC13-026.pdf>)

Boundary Changes Made After December 31, 2016



Map 1 – Changes made in Docket TC17-023

In the map above, the area located in the yellow boundary was added to Interstate Telecommunications Cooperative territory.



Map 2 – Northern View of the changes made in TC17-061



Map 3 – Southern View of the changes made in TC17-061

In the maps above, the areas outlined in yellow were added to Brookings Municipal Utilities d/b/a Swiftel Communications territory.