

GUNDERSON, PALMER, GOODSSELL & NELSON, LLP

ATTORNEYS AT LAW

WYNN A. GUNDERSON
J. CRISMAN PALMER
G. VERNE GOODSSELL
JAMES S. NELSON
DANIEL E. ASHMORE
TERENCE R. QUINN
DONALD P. KNUDSEN
PATRICK G. GOETZINGER
TALBOT J. WIECZOREK
MARK J. CONNOT

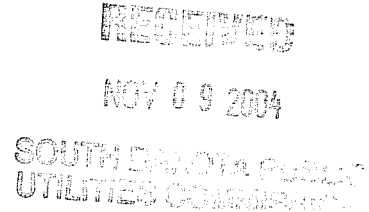
AMERICAN MEMORIAL LIFE BUILDING
440 MT. RUSHMORE ROAD
POST OFFICE BOX 8045
RAPID CITY, SOUTH DAKOTA 57709-8045
TELEPHONE (605) 342-1078 • FAX (605) 342-0480
www.gundersonpalmer.com

ATTORNEYS LICENSED TO PRACTICE IN
SOUTH DAKOTA, NORTH DAKOTA, NEBRASKA
COLORADO, MONTANA, WYOMING & MINNESOTA

JENNIFER K. TRUCANO
MARTY J. JACKLEY
DAVID E. LUST
THOMAS E. SIMMONS
TERRI LEE WILLIAMS
PAMELA SNYDER-VARNS
SARA FRANKENSTEIN
AMY K. SCHULDT
JASON M. SMILEY
SHANE C. PENFIELD

November 8, 2004

Pamela Bonrud
Executive Director
SD Public Utilities Commission
500 E Capitol Avenue
Pierre SD 57501



RE: RCC Minnesota, Inc. and Wireless Alliance, L.L.C., d/b/a Unicel for Designation
as an ETC - Docket TC 03-193 GPGN File No. 7401.040099

Dear Ms. Bonrud:

Enclosed please find Petitioners' Hearing Exhibit 18. This hearing exhibit is being provided in supplementation of the record as discussed at the end of the hearing on October 14, 2004. The original has been provided to the Court Reporter to be included with the transcript.

This exhibit contains the South Dakota information concerning the competitive coverage analysis report that was performed for RCC during September and October 2003. The exhibit does not constitute the full report. The full report is approximately 64 pages long and deals with a number of markets and maps outside of the State of South Dakota. The enclosed nine pages contain the information on South Dakota.

The enclosed information is confidential in that it contains proprietary, market specific information regarding Petitioners. Because of this, the information should be treated as confidential pursuant to A.R.S.D. §§ 20:10:01:40 through 20:10:01:44. Petitioners request the information be kept confidential for ten (10) years. I may be contacted at the above address regarding any questions on this confidentiality request.

If you have any questions, please let me know.

Sincerely,

A large, stylized handwritten signature in black ink, appearing to read "Talbot J. Wieczorek".

Talbot J. Wieczorek

TJW:klw
Enclosures

c: Darla Pollman Rogers
Richard Coit
James Cremer
Meredith Moore
Clients

RECEIVED

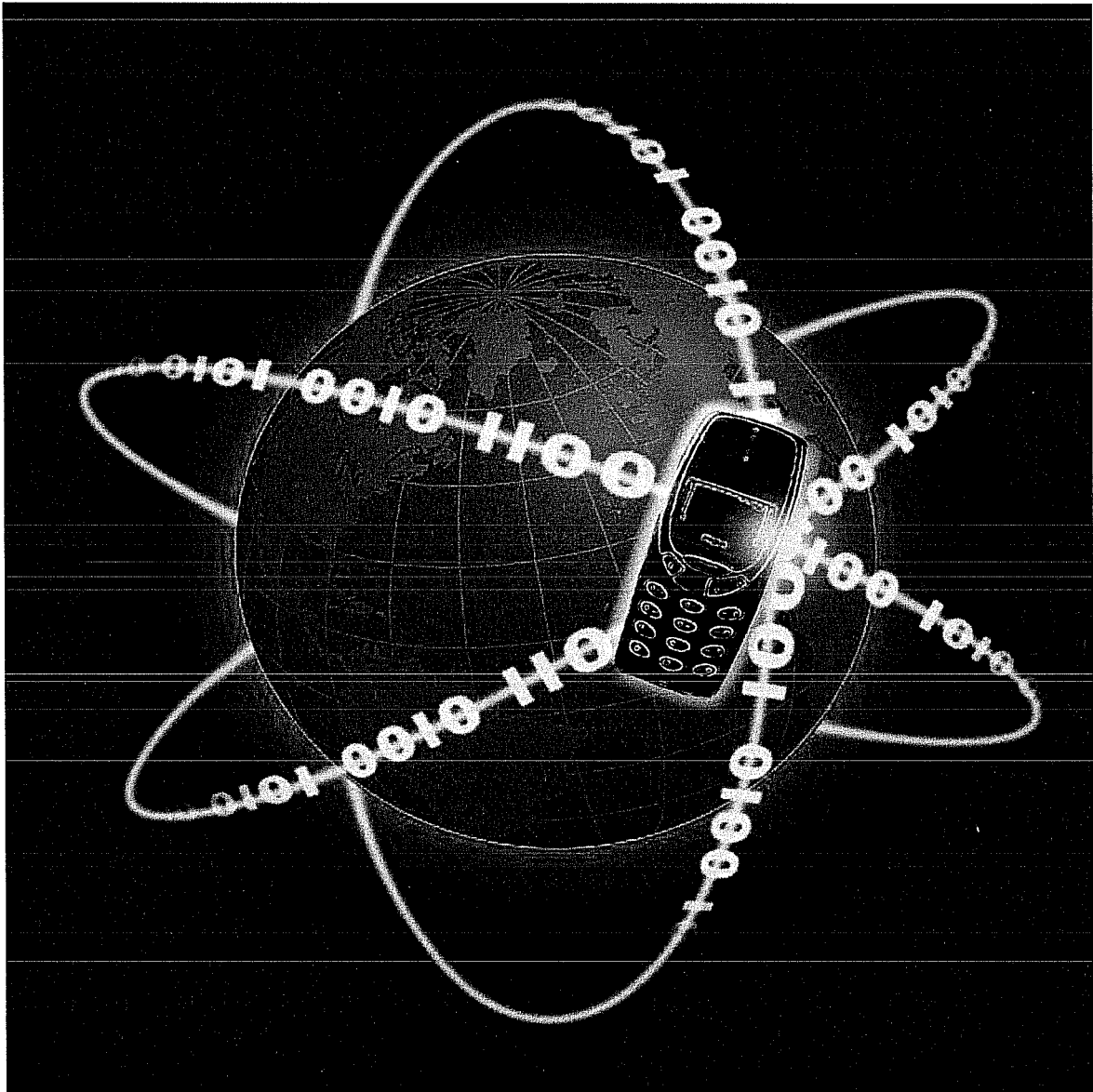
NOV 09 2004

SOUTH DAKOTA PUBLIC
UTILITIES COMMISSION



Competitive Coverage Analysis Report

SOUTH DAKOTA



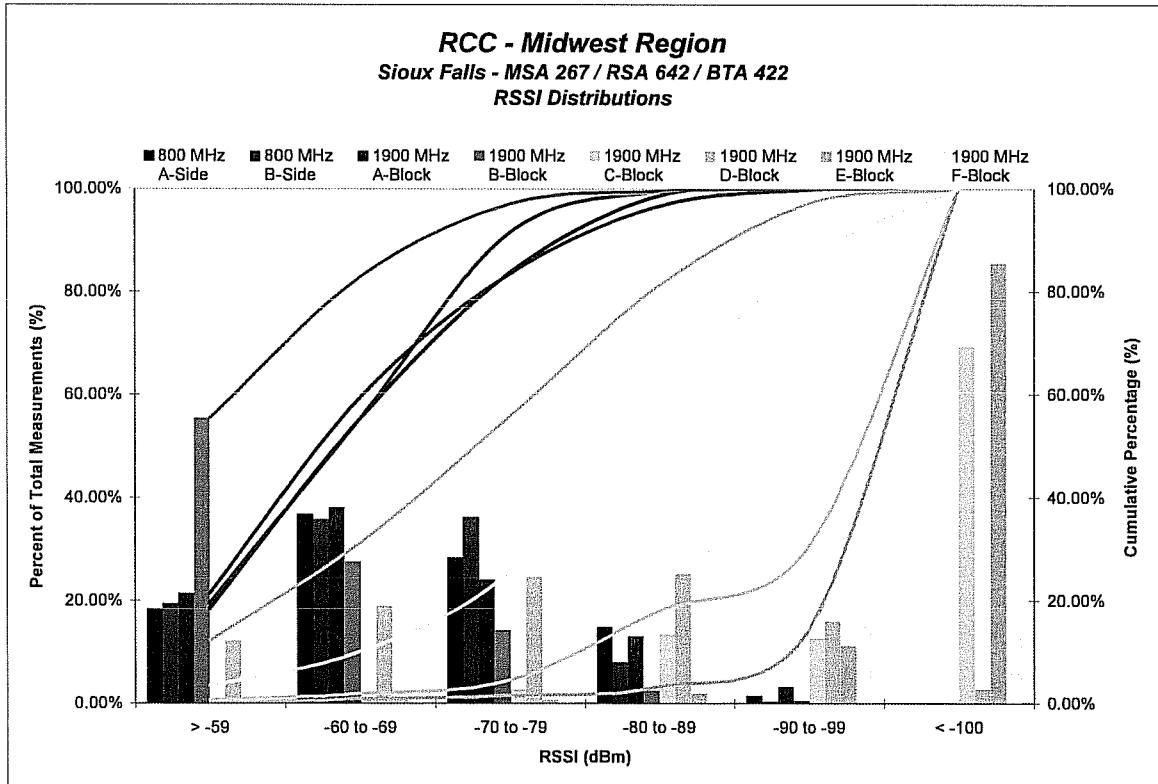


Sioux Falls
MSA 267 / RSA 642 / BTA 422

RSSI Coverage Statistics

RCC - Midwest Region								
Sioux Falls - MSA 267 / RSA 642 / BTA 422								
FREQUENCY	Cellular (800 MHz)				PCS (1900 MHz)			
	SIDE / BLOCK	A-Side	B-Side	A-Block	B-Block	C-Block	D-Block	E-Block
RSSI								
% RSSI between - MAX to MIN								
> -59	18.48%	19.54%	21.37%	55.30%	0.65%	12.24%	0.00%	3.36%
-60 to -69	36.82%	35.78%	38.03%	27.51%	1.16%	18.99%	0.79%	6.71%
-70 to -79	28.37%	38.21%	24.07%	14.17%	2.72%	24.61%	0.66%	15.52%
-80 to -89	14.90%	8.05%	13.11%	2.48%	13.45%	25.32%	1.85%	33.43%
-90 to -99	1.43%	0.43%	3.28%	0.55%	12.66%	18.03%	11.24%	27.41%
< -100	0.00%	0.00%	0.14%	0.00%	69.34%	2.81%	85.45%	13.57%
Cumulative % of RSSI								
>= -59	18.48%	19.54%	21.37%	55.30%	0.65%	12.24%	0.00%	3.36%
>= -69	55.30%	55.32%	59.40%	82.81%	1.81%	31.22%	0.79%	10.07%
>= -79	83.67%	91.52%	83.48%	98.07%	4.53%	55.84%	1.46%	25.59%
>= -89	98.57%	99.57%	96.58%	99.45%	17.98%	81.15%	3.31%	59.02%
>= -99	100.00%	100.00%	99.88%	100.00%	30.66%	97.19%	14.55%	86.43%
Mean RSSI (dBm)								
	-68.82	-67.47	-68.66	-59.63	-99.06	-76.98	-101.45	-86.34
Rank based on Mean RSSI								
	4	2	3	1	7	5	8	6

RSSI Distribution



Competitive Analysis Report — RCC 1900 MHz B-Block (light blue) - Western Wireless 800 MHz A-Side (black)

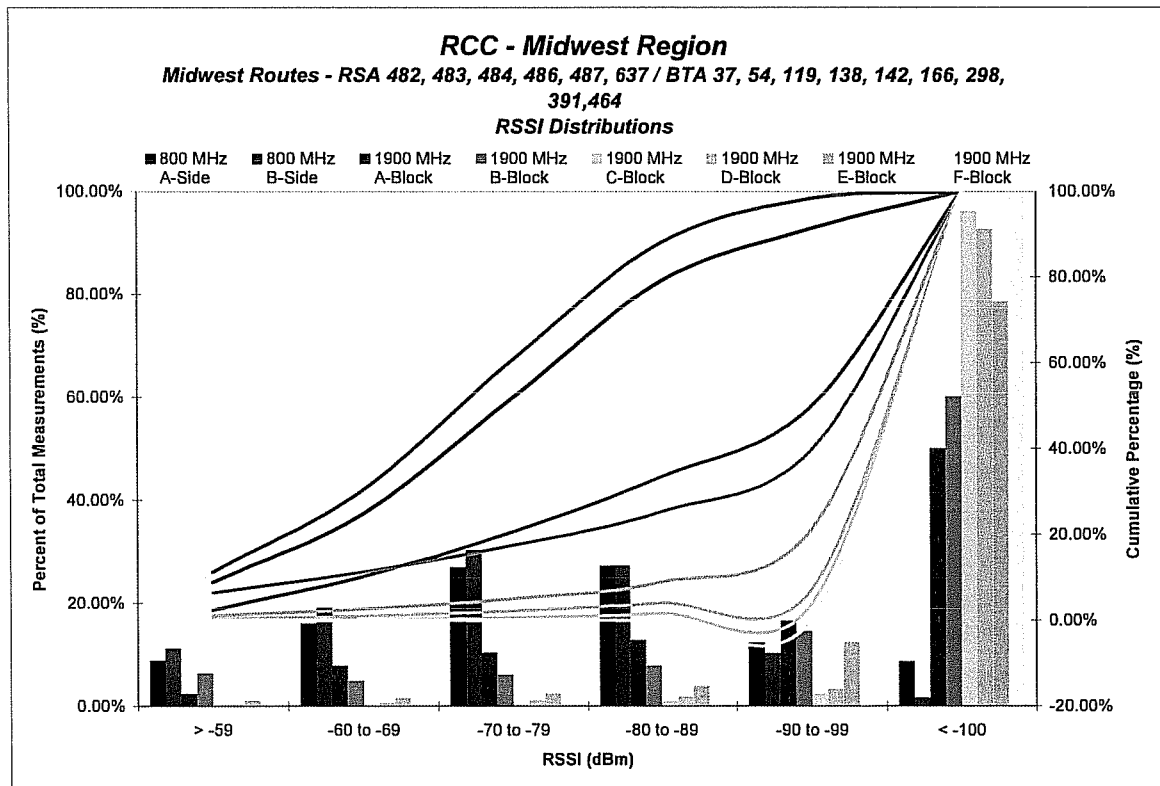
Midwest Routes

RSA 482, 483, 484, 486, 487, 637 / BTA 37, 54, 119, 138, 142, 166, 298, 391, 464

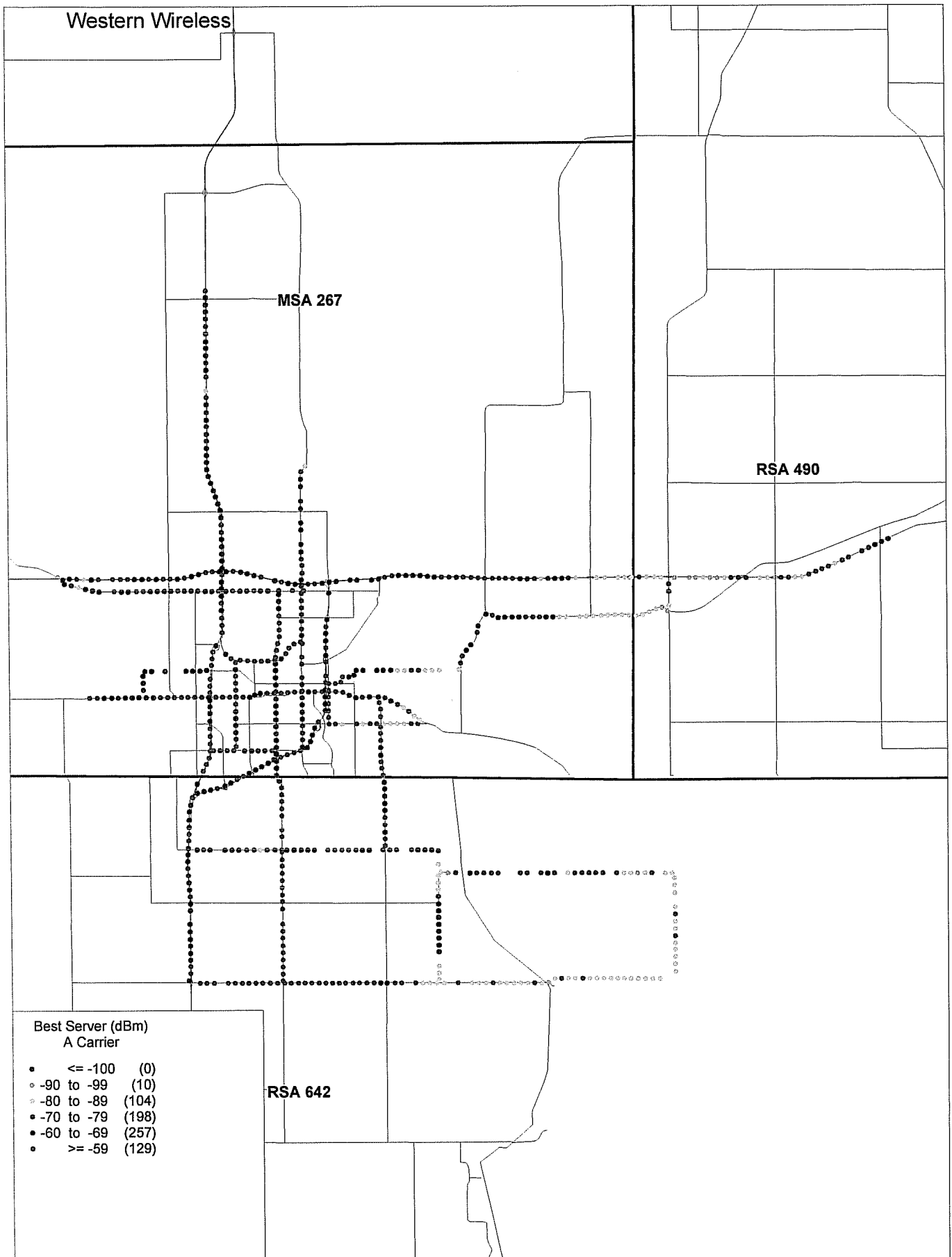
RSSI Coverage Statistics

RCC - Midwest Region								
Midwest Routes - RSA 482, 483, 484, 486, 487, 637 / BTA 37, 54, 119, 138, 142, 166, 298, 391, 464								
FREQUENCY	Cellular (800 MHz)		PCS (1900 MHz)					
SIDE / BLOCK	A-Side	B-Side	A-Block	B-Block	C-Block	D-Block	E-Block	F-Block
RSSI								
% RSSI between - MAX to MIN								
> -59	8.85%	11.26%	2.37%	6.36%	0.05%	0.32%	1.11%	0.00%
-60 to -69	16.04%	19.16%	7.87%	4.69%	0.13%	0.71%	1.58%	0.00%
-70 to -79	26.86%	30.31%	10.39%	6.12%	0.33%	1.16%	2.42%	0.01%
-80 to -89	27.21%	27.35%	12.79%	7.69%	1.00%	1.85%	3.88%	0.06%
-90 to -99	12.28%	10.30%	16.52%	14.58%	2.36%	3.32%	12.45%	0.40%
< -100	8.67%	1.63%	50.04%	60.16%	86.12%	82.63%	78.60%	69.53%
Cumulative % of RSSI								
>= -59	8.85%	11.26%	2.37%	6.36%	0.05%	0.32%	1.11%	0.00%
>= -69	24.89%	30.41%	10.25%	11.25%	0.18%	1.03%	2.67%	0.00%
>= -79	51.85%	60.73%	20.64%	17.37%	0.51%	2.20%	5.09%	0.02%
>= -89	79.05%	88.07%	33.43%	25.26%	1.52%	4.05%	8.95%	0.08%
>= -99	91.33%	98.37%	49.96%	39.64%	3.88%	7.37%	21.40%	0.47%
Mean RSSI (dBm)								
	-79.08	-75.54	-91.90	-93.74	-105.25	-102.15	-99.58	-104.59
Rank based on Mean RSSI								
	2	1	3	4	8	6	5	7

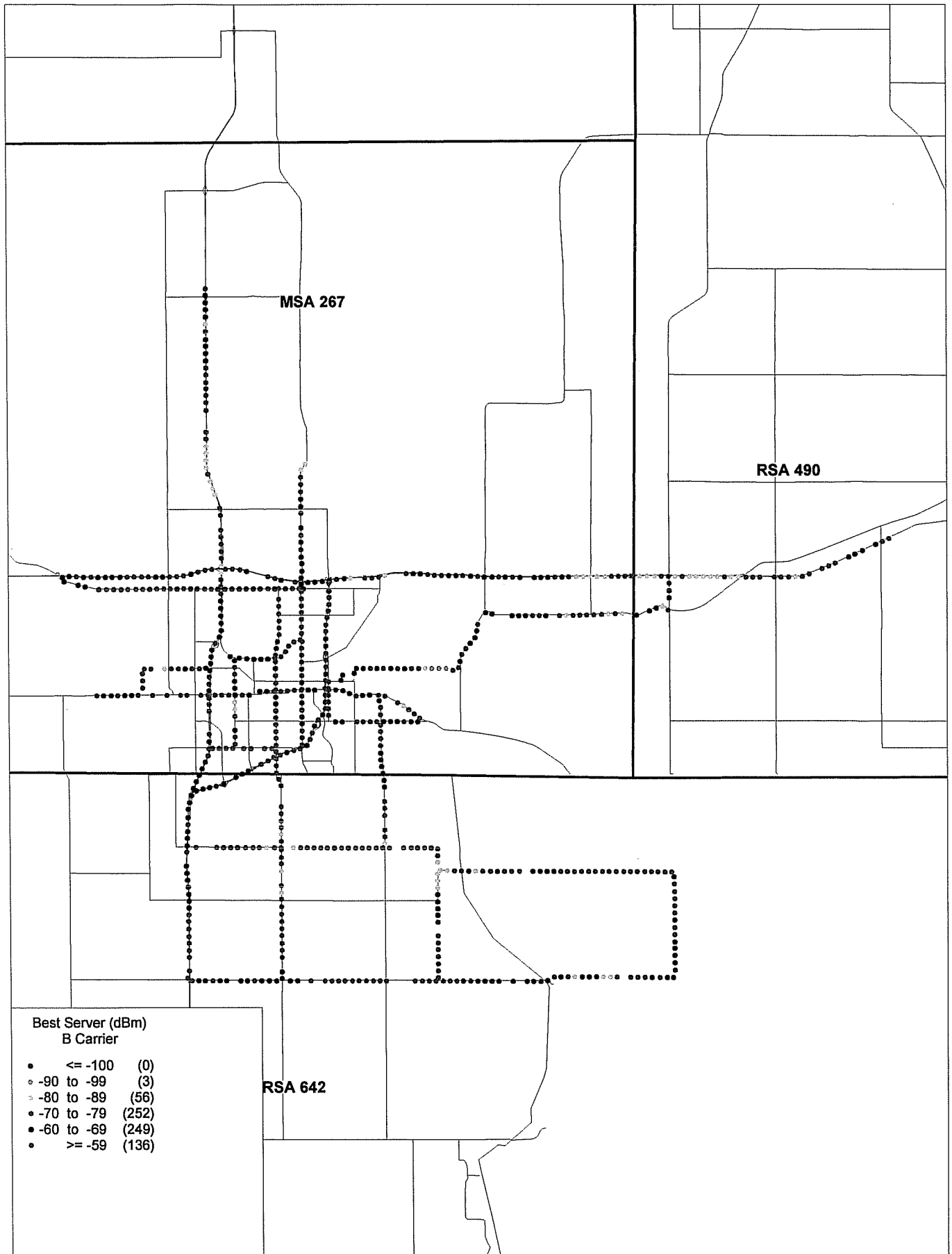
RSSI Distribution



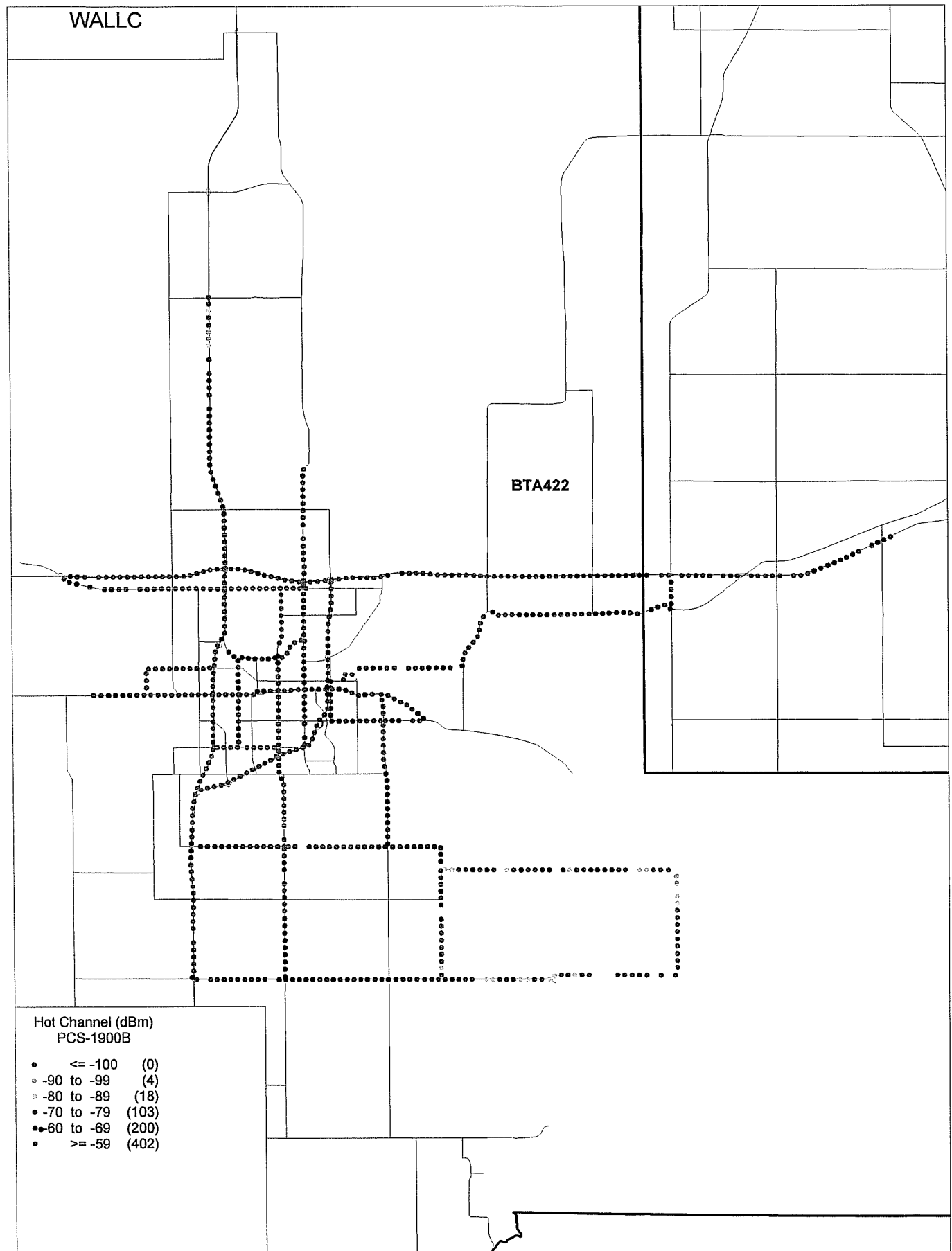
Sioux Falls - MSA 267, RSA 642: Cellular (800 MHz) A-Side Best Server RSSI



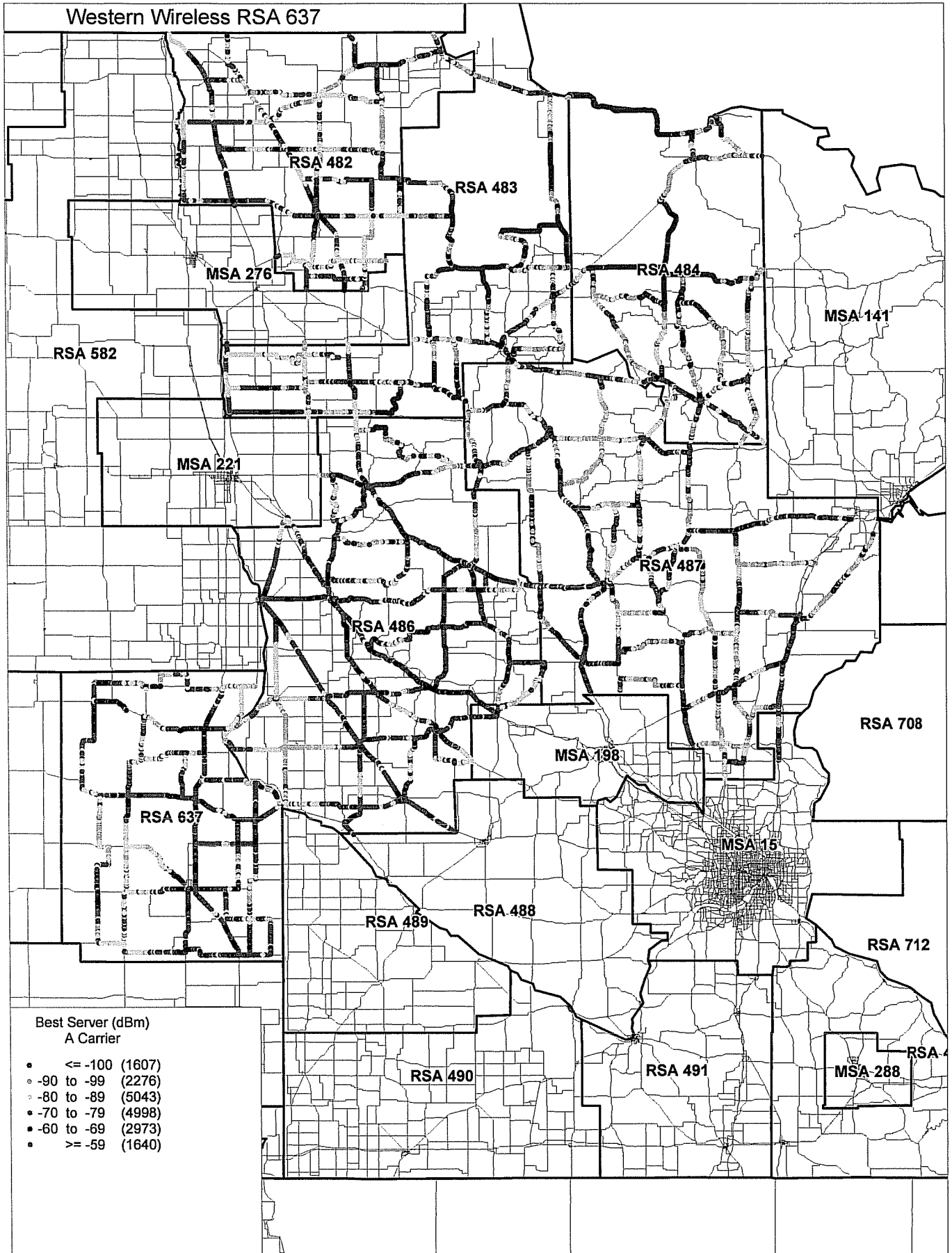
Sioux Falls - MSA 267, RSA 642: Cellular (800 MHz) B-Side Best Server RSSI - RCC



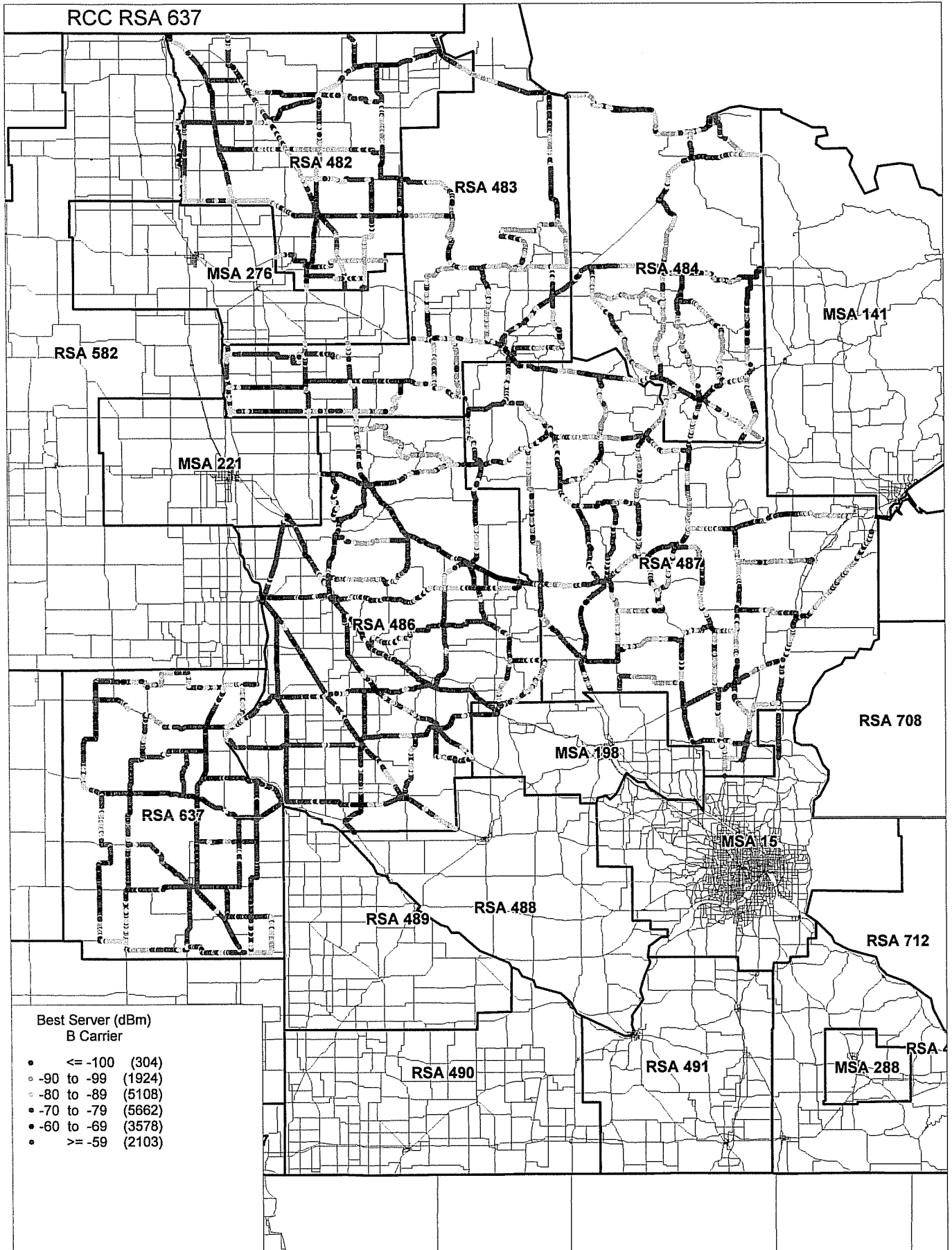
Sioux Falls - BTA 422: PCS (1900 MHz) B-Block Hot Channel RSSI



Midwest Routes - RSA 482, 483, 484, 486, 487, 637: Cellular (800 MHz) A-Side Best Server RSSI



Midwest Routes - RSA 482, 483, 484, 486, 487, 637: Cellular (800 MHz) B-Side Best Server RSSI - RCC



Midwest Routes - BTA 37, 54, 119, 138, 142, 166, 298, 391, 464: PCS (1900 MHz) A-Block Hot Channel RSSI

