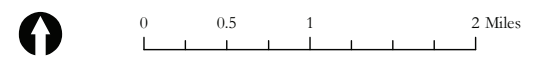


Deer Creek Station Project



Project Features

- Proposed Gas Pipeline Route
- Deer Creek Station

Existing Electric

- Substation
- East River Distribution
- Northern Border Pipeline
- WAPA Transmission
 - 115kV
 - 345kV

Bedrock Geology

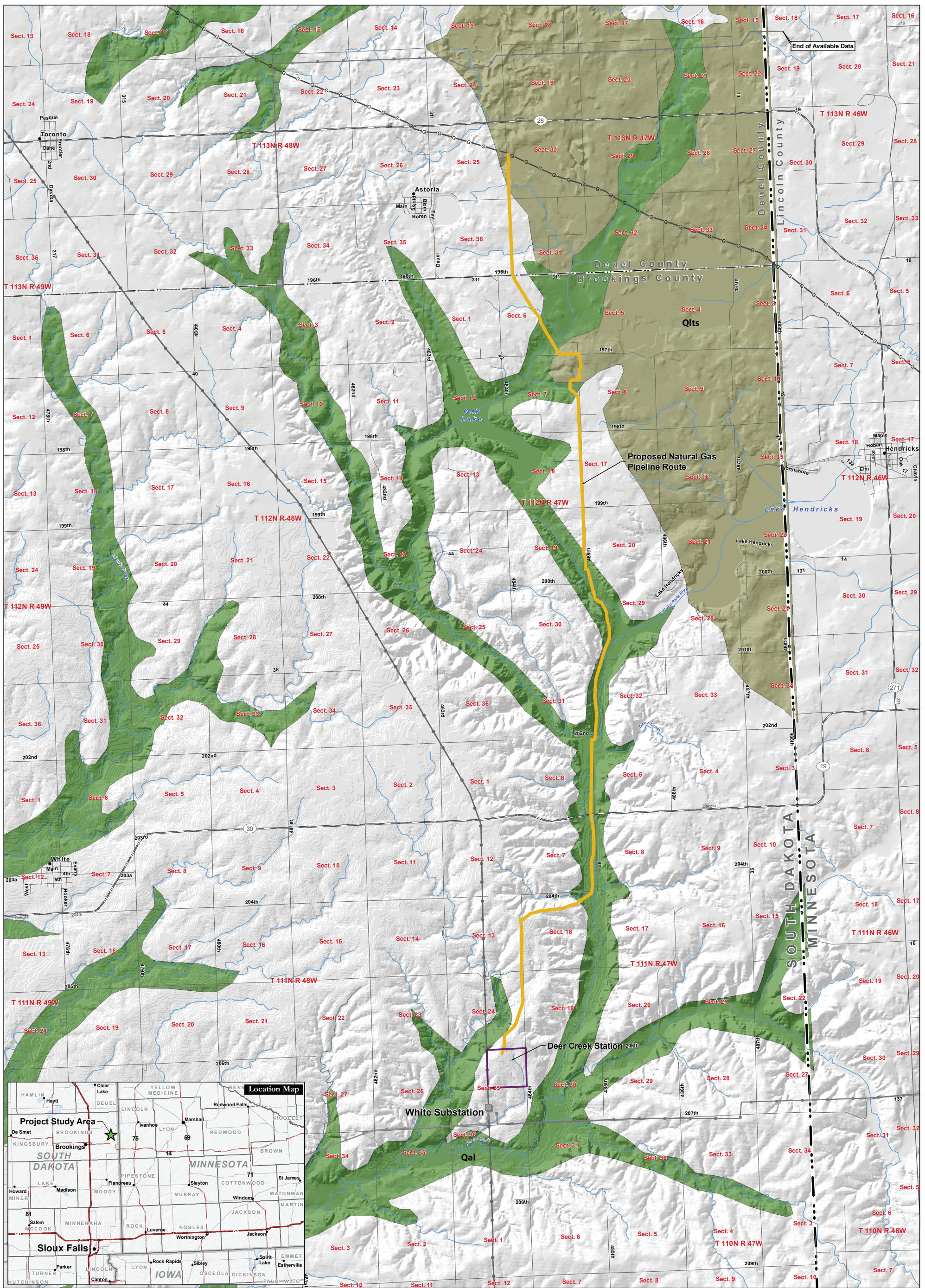
- Kn Niobrara Formation
- Kp Pierre Shale
- Ku Cretaceous, undifferentiated
- Xs Sioux Quartzite

Transportation

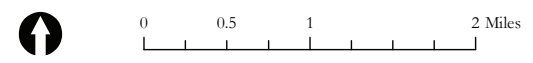
- State Highway
- Major Road
- Local Road



EDAW | AECOM



Deer Creek Station Project



Project Features

- Proposed Gas Pipeline Route
- Deer Creek Station
- Substation
- East River Distribution
- Northern Border Pipeline
- WAPA Transmission
- 115kV
- 345kV

Existing Electric

- Substation
- East River Distribution
- Northern Border Pipeline
- WAPA Transmission
- 115kV
- 345kV

Transportation

- State Highway
- Major Road
- Local Road

Surficial Geology

- Qal Quaternary Alluvium
- Qlts Quaternary/Pleistocene Stagnation Moraine Till



EDAW | AECOM