

**South Dakota Public Utilities Commission
TransCanada Keystone Pipeline, LP
Docket HP07-001
Response to Staff's First Data Request**

**June 18, 2007
Page 1 of 1**

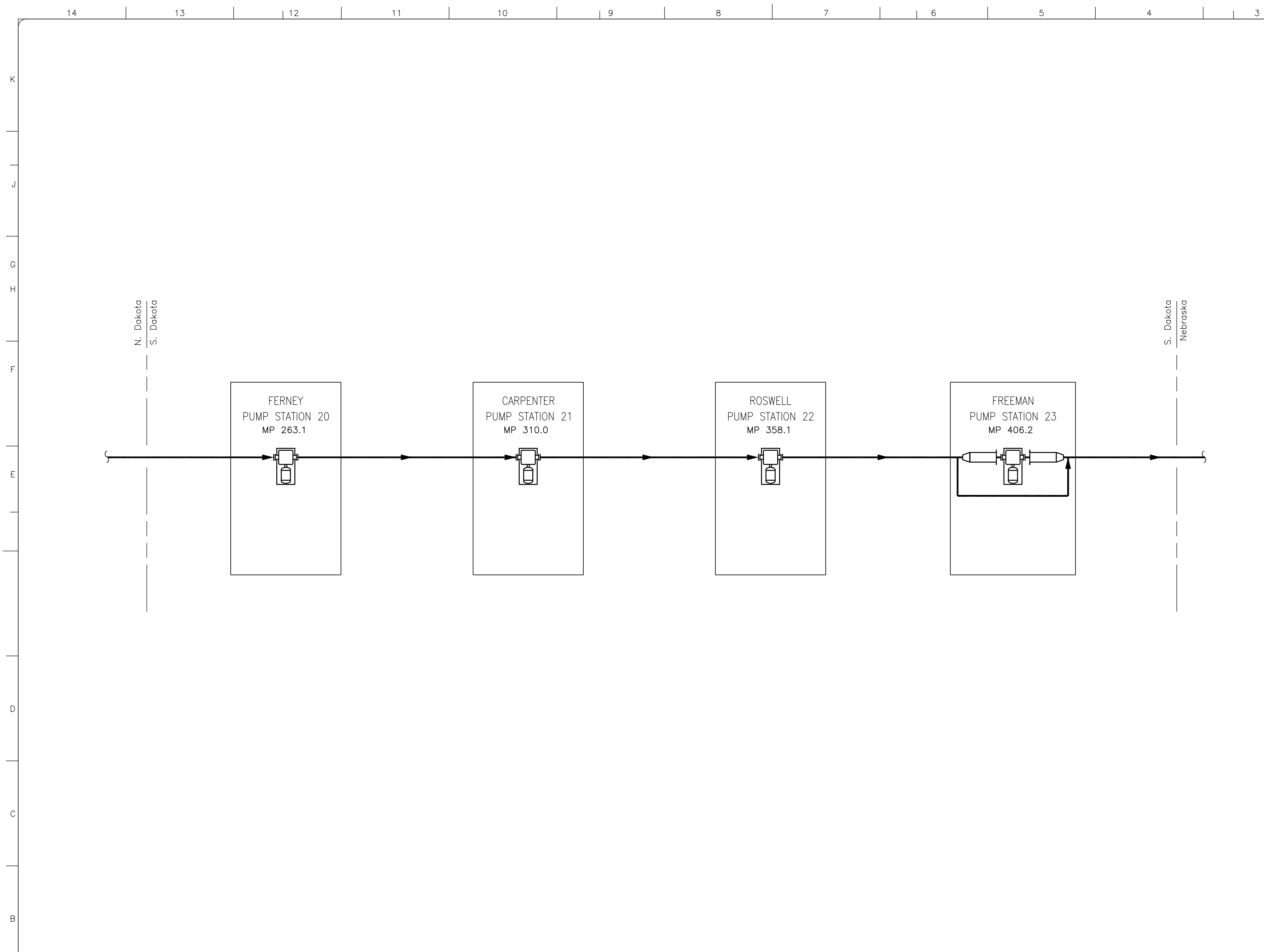
1-12

Data Request:

Please provide a flow diagram showing daily design capacity of the proposed transmission facility per 20:10:22:38 (1).

Response:

Flow diagrams for the base and expansion flow cases are attached. The figures indicate design capacities of 483,000 bpd and 655,000 bpd, which correspond to the nominal capacities of 435,000 bpd and 591,000 bpd, respectively.



LEGEND

- NEW PIPE, EQUIPMENT AND MATERIALS
- EXISTING PIPE, EQUIPMENT AND MATERIALS
- MAIN LINE PUMP
- SCRAPER LAUNCHER/RECEIVER
- METER
- TANKS

DESIGN CAPACITIES

	NOMINAL CAPACITY	PEAK DAILY DESIGN CAPACITY
February	435,000 b/d	472,000 b/d
August	435,000 b/d	493,000 b/d
Year Average	435,000 b/d	483,000 b/d

REFERENCE DRAWINGS

DRAWING No	TITLE
-	

REVISION

REV No	DATE	DESCRIPTION
PA	2007-06-12	ISSUED FOR SOUTH DAKOTA DATA REQUEST

APPROVAL

PROJECT CODE	DRAFTER	DRAFTING CHECKER	DESIGNER	DESIGN CHECKER	PROJECT MANAGER	COMPANY
017250	JK				ID	SNC-Lavalin

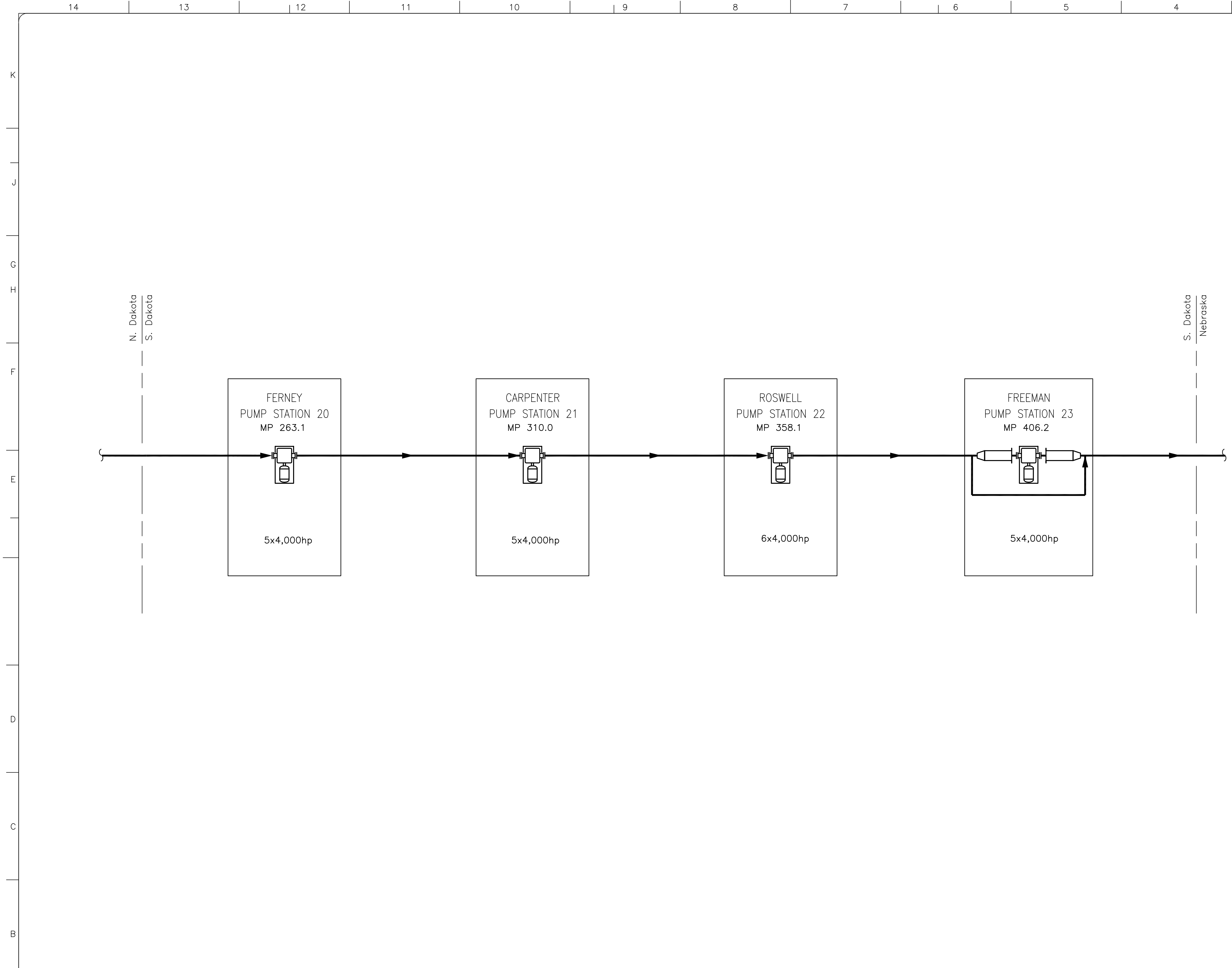
SNC-LAVALIN Inc.
 608 Oxford Tower
 10235 - 101 Street
 Edmonton, Alberta, Canada T5J 3G1

TransCanada
In business to deliver

KEYSTONE
 FIA # CHARGE: DISCIPLINE #

SOUTH DAKOTA
 MECHANICAL FLOW SCHEMATIC
 435,000 BPD OPTION

SCALE: NTS DRAWING No: REV PA



LEGEND

- NEW PIPE, EQUIPMENT AND MATERIALS
- EXISTING PIPE, EQUIPMENT AND MATERIALS
- MAIN LINE PUMP
- SCRAPER LAUNCHER/RECEIVER
- METER
- TANKS

EXPANSION CASE CAPACITIES

	NOMINAL CAPACITY	PEAK DAILY DESIGN CAPACITY
February	591,000 b/d	647,000 b/d
August	591,000 b/d	660,000 b/d
Year Average	591,000 b/d	655,000 b/d

REFERENCE DRAWINGS

DRAWING No	TITLE
-	

REVISION

REV No	DATE	DESCRIPTION
PA	2007-06-12	ISSUED FOR SOUTH DAKOTA DATA REQUEST

APPROVAL

PROJECT CODE	DRAFTER	DRAFTING CHECKER	DESIGNER	DESIGN CHECKER	PROJECT MANAGER	COMPANY
017250	JK				ID	SNC-Lavalin

PROFESSIONAL ENGINEER/RPT

PERMIT/ ENG. APPROVAL

SNC-LAVALIN Inc.
 608 Oxford Tower
 10235 - 101 Street
 Edmonton, Alberta, Canada T5J 3G1

TransCanada
In business to deliver

KEYSTONE

FIA # CHARGE: DISCIPLINE #

SOUTH DAKOTA
 MECHANICAL FLOW SCHEMATIC
 591,000 BPD OPTION

SCALE NTS DRAWING No REV PA

TIME-DESIGNFILE