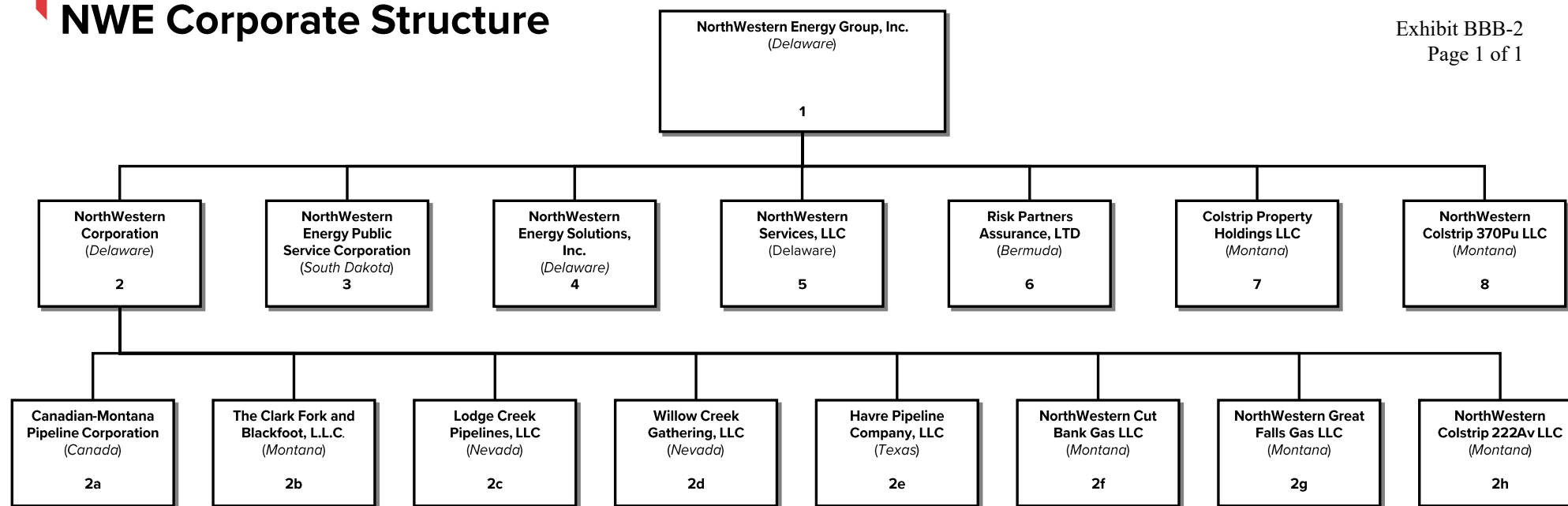


NWE Corporate Structure

Exhibit BBB-2
Page 1 of 1



1 NorthWestern Energy Group, Inc., parent holding company (Nasdaq: NWE).

2 NorthWestern Corporation holds the MT public utility operations.

2a Canadian-Montana Pipeline Corporation owns a natural gas pipeline that crosses the Canadian border.

2b The Clark Fork and Blackfoot, L.L.C. owned the Milltown Dam facility in Montana (dam has been dismantled).

2c Lodge Creek Pipelines, LLC owns a natural gas gathering system in northern Montana.

2d Willow Creek Gathering, LLC owns a natural gas gathering system in northern Montana.

2e Havre Pipeline Company, LLC owns a natural gas transmission and gathering system in northern Montana. (NorthWestern Corporation holds a 96%+ ownership interest in this entity).

2f NorthWestern Cut Bank Gas LLC holds regulated natural gas assets in MT acquired from Energy West.

2g NorthWestern Great Falls Gas LLC holds regulated natural gas assets in MT acquired from Energy West.

2h NorthWestern Colstrip 222Av LLC will hold the Colstrip interests to be acquired from Avista.

3 NorthWestern Energy Public Service Corporation holds the NE/SD public utility operations.

4 NorthWestern Energy Solutions, Inc., holds unregulated investments.

5 NorthWestern Services, LLC, owns limited unregulated assets in SD and from Energy West acquisition.

6 Risk Partners Assurance, Ltd. is our captive insurer.

7 Colstrip Property Holdings LLC will hold real estate yet to be acquired.

8 NorthWestern Colstrip 370Pu LLC will hold the Colstrip interests to be acquired from Puget Sound Energy.