

APPENDIX D

Aquatic Resources Summary Report



Aquatic Resources Summary Report Proposed Crowned Ridge I Battery Energy Storage System, Codington County, South Dakota

SEPTEMBER 2025

PREPARED FOR

Crowned Ridge Wind, LLC

PREPARED BY

SWCA Environmental Consultants

**AQUATIC RESOURCES SUMMARY REPORT
PROPOSED CROWNED RIDGE I BATTERY ENERGY
STORAGE SYSTEM, CODINGTON COUNTY, SOUTH DAKOTA**

Prepared for

Crowned Ridge Wind, LLC
700 Universe Boulevard
Juno Beach, Florida 33408

Prepared by

SWCA Environmental Consultants
201 Slate Drive, Suite 8
Bismarck, North Dakota 58503
(701) 258-6622
www.swca.com

SWCA Project No. 81714

September 2025

CONTENTS

1	Introduction	1
2	Environmental Setting	1
3	Methods	1
3.1	Desktop Review.....	1
3.2	Field Investigation	2
3.2.1	Mapping	2
3.2.2	Wetlands	2
3.2.3	Vegetation.....	3
3.2.4	Soils	3
3.2.5	Hydrology	4
3.3	Non-wetland Waters	4
4	Results.....	4
4.1	Desktop Review.....	5
4.2	Field Investigation	5
4.2.1	Wetlands	6
4.2.2	Non-wetland Waters	7
5	Conclusions	7
6	References	8

Appendices

- Appendix A. Figures
- Appendix B. Representative Photographs
- Appendix C. Wetland Determination Data Forms

Tables

Table 1.	Mapped Soil Types Within the Project Area	5
Table 2.	Field-Delineated Wetlands.....	6

1 INTRODUCTION

Crowned Ridge Wind, LLC, a wholly owned indirect subsidiary of NextEra Energy Resources, LLC (NextEra), is seeking to add a battery energy storage system as an accessory to the Crowned Ridge 1 Energy Project in Codington County, South Dakota (Project). The Project Area totals approximately 72 acres and is approximately 14 miles northeast of Watertown, South Dakota near the intersection of 161st Street and 446th Avenue (Appendix A).

Crowned Ridge Wind, LLC, contracted SWCA Environmental Consultants (SWCA) to complete an aquatic resources assessment for the Project Area. The objectives of the aquatic resources assessment are to identify and evaluate wetlands and other waters within the Project Area that may be considered waters of the United States (WOTUS) subject to U.S. Army Corps of Engineers (USACE) jurisdiction under Section 404 of the Clean Water Act. This report provides the methods, results, and conclusions of the aquatic resources assessment that SWCA conducted in July 2025.

2 ENVIRONMENTAL SETTING

Ecoregions are delineated based on the continuity of natural resource availability, vegetation communities, and other factors (Bryce et al. 1998). The U.S. Environmental Protection Agency (EPA) and the Commission for Environmental Cooperation (CEC) have defined a hierarchy of ecoregions at various scales, with Level I ecoregions being the coarsest level defined at the global scale, through Level III at the national scale (CEC 1997). Bryce et al. (1998) defined smaller Level IV ecoregions at a regional scale within the Level III ecoregions for North Dakota and South Dakota.

The Project is located within the Level IV Prairie Coteau ecoregion, which is a subdivision of the Level III Northern Glaciated Plateau ecoregion (Bryce et al. 1998). The Prairie Coteau ecoregion resulted from stagnant glacial ice melting beneath a layer of sediment and is dominated by a tightly undulating, hummocky landscape with no drainage pattern. This ecoregion has large chains of lakes and scattered semipermanent or seasonal wetlands (Bryce et al. 1998).

3 METHODS

SWCA identified and delineated wetlands and water bodies within the Project Area using a combination of desktop review and field investigation methods described in this section.

3.1 Desktop Review

SWCA reviewed the following publicly available data sources to assess the likelihood of wetlands and other WOTUS occurring in the Project Area:

- U.S. Fish and Wildlife Service (USFWS) National Wetlands Inventory (NWI) (USFWS 2023)
- U.S. Geological Survey (USGS) National Hydrography Dataset (NHD) (USGS 2022a)
- USGS National Land Cover Database (USGS 2021)
- Natural Resource Conservation Service (NRCS) Web Soil Survey Geographic Database (SSURGO) (NRCS 2024)
- U.S. Army Corps of Engineers (USACE) Antecedent Precipitation Tool (APT) (USACE 2024)
- Historical and current aerial imagery (Google Earth 2025)

SWCA reviewed this data to identify aquatic resources within the Project Area that may be jurisdictional and require investigation and confirmation during delineations. SWCA used the NRCS SSURGO to review the soil map units mapped for the Project Area (NRCS 2024). SSURGO data contain spatial information on soil properties and characteristics. Useful soil properties for identifying aquatic resources include hydric soil components, drainage classifications, and taxonomic class. The NWI is a USFWS database that identifies and categorizes wetland areas based primarily on aerial imagery interpretation (USFWS 2023). The NHD, which is maintained by the USGS, identifies surface water systems in the United States, including lakes, streams, rivers, and canals (USGS 2022a). The USGS 1:24,000-scale topographic maps display land surface elevation throughout the United States. The elevation data include both natural and human-made features (USGS 2022b). SWCA reviewed historical and recent aerial imagery to identify areas with possible wetland or hydrology signatures to be ground-truthed during field delineations (Google Earth 2025).

SWCA used the USACE's APT (USACE 2024) to determine whether the aquatic resources delineation occurred under normal climatic conditions. The APT calculates whether antecedent precipitation is normal by comparing rainfall data from the previous 3 months to the same 3-month period over a rolling 30-year period. The approximate center of the Project Area was used in the APT.

3.2 Field Investigation

SWCA conducted the field delineation for aquatic resources on July 30, 2025, using the methods discussed in the following subsections.

3.2.1 Mapping

A Global Navigation Satellite System (GNSS) unit capable of submeter accuracy was used with Esri Field Maps software to geographically reference determination points and to delineate boundaries during the field delineations. Geographic information system (GIS) software was used in the office to analyze the delineated features, calculate areas, and generate report maps.

3.2.2 Wetlands

SWCA delineated wetlands in accordance with the *Corps of Engineers Wetland Delineation Manual* (Manual) (USACE 1987) and the *Regional Supplement to the Corps of Engineers Wetland Delineation Manual: Midwest Region, (Version 2.0)* (Supplement) (USACE 2010). If potential wetland characteristics were observed in an area, SWCA recorded a determination point(s) to determine the wetland status of the area. Wetland boundaries were delineated where all three fundamental characteristics of a wetland (dominance of hydrophytic vegetation, hydric soils, and wetland hydrology) were present. However, in certain situations, normal seasonal or annual variation in environmental conditions can lead to the development of "problem areas," in which wetland vegetation, hydric soils, or wetland hydrology may not be readily identifiable. These problem areas may require additional investigation to determine the presence or absence of wetland indicators. In other situations, recent human activities or natural events can create "atypical situations" in which indicators of wetland hydrology, hydric soils, and hydrophytic vegetation are absent or unreliable. As with problem areas, these situations may require additional investigation to determine whether a wetland is present.

At each potential wetland, a sample determination point was selected where the plant species was identified, their percent cover, and their indicator status according to the USACE (2023) were used to indicate the presence of hydrophytic vegetation. At the same determination point and to determine whether hydric soils were present, SWCA extracted a soil profile to a sufficient depth (generally 24

inches) to document the presence or absence of all applicable hydric soil indicators. Inundation, saturation, and other physical indicators suggesting the presence of water were used to determine wetland hydrology at each determination point within each potential wetland.

SWCA recorded data on USACE Midwest Regional Wetland Determination Data Forms to verify the presence of wetlands. Details recorded at each determination point consisted of vegetation within USACE Midwest prescribed sampling plots (further described below), soil characteristics, and hydrology information. SWCA took representative overview photographs of the potential wetland and associated upland and detailed photographs of vegetation, soils, and hydrology at each determination point. Delineated wetlands were classified using the Cowardin classification system (Cowardin et al. 1979).

3.2.3 Vegetation

At each determination point, SWCA recorded the binomial scientific name and absolute percent ground cover of all vascular plants within USACE Midwest prescribed sampling plots for each vegetative stratum. Typical plot size is a 30-foot radius for the tree stratum, a 15-foot radius for the sapling and shrub stratum, a 5-foot radius for the herbaceous stratum, and a 30-foot radius for the woody vine stratum. However, in some instances, biologists may have refined plot sizes to conform to the actual wetland size or shape. The Supplement (USACE 2010) defines the tree stratum as a woody-stemmed plant with a trunk diameter at breast height of equal to or greater than 3 inches, regardless of height; the sapling and shrub stratum as consisting of woody-stemmed plants with a trunk diameter at breast height of less than 3 inches, regardless of height; the herbaceous stratum as including all non-woody-stemmed plants, regardless of height; and the woody vine stratum as including all woody-stemmed vines, regardless of diameter. The wetland indicator status of each plant species was determined using the 2022 National Wetland Plant List (USACE 2023), which divides plant species into five categories that reflect the range of estimated probabilities of a species existing in a wetland versus an upland. The five categories of wetland indicator statuses are as follows:

- Obligate (OBL): Almost always occurs in wetlands
- Facultative wetland (FACW): Usually occurs in wetlands, but may occur in non-wetlands
- Facultative (FAC): Occurs in wetlands or non-wetlands
- Facultative upland (FACU): Usually occurs in non-wetlands, but may occur in wetlands
- Upland (UPL): Almost never occurs in wetlands

Any plant community with a predominance of hydrophytes (OBL, FACW, and FAC) across all strata was determined to meet the USACE criteria of a hydrophytic community. In cases where disturbance had created problematic hydrophytic vegetation (i.e., vegetation that makes it difficult to identify a wetland due to natural features such as drought, rainfall, human activity), visual observations of other hydrophytic vegetation indicators and site conditions were documented and evaluated to clarify wetland boundaries.

3.2.4 Soils

Hydric soil determinations were made according to criteria listed in the Manual (USACE 1987), the Supplement (USACE 2010), and *Field Indicators of Hydric Soils in the United States: A Guide for Identifying and Delineating Hydric Soils, Version 8.2* (U.S. Department of Agriculture 2018). The biologists excavated soil pits to a depth of at least 24 inches and described each soil profile by horizon. Each horizon was evaluated for soil color; thickness; abundance; contrast of redoximorphic features (mottles); and soil texture. Munsell soil color charts were used to determine the color of the soil matrix and redoximorphic features. The “feel” or “ribbon” test was used to determine soil texture. The soil

profile was assessed for the hydric soil indicators listed in the Manual (USACE 1987) and the Supplement (USACE 2010). If the soil profile displayed at least one hydric soil indicator, a positive hydric soil determination was made.

Some soils that meet the hydric soil definition may not exhibit any hydric soil indicators. These problematic hydric soils may lack indicators because of the color of the parent material from which the soils develop, because conditions may inhibit the development of redoximorphic features, or because not enough time has passed to develop hydric soil indicators (USACE 2010). For areas with problematic soils, hydric soil conditions were assumed to be present at locations where there was a dominant hydrophytic plant community and wetland hydrology indicators, as listed in the Supplement (USACE 2010).

3.2.5 Hydrology

Wetland hydrology was determined primarily in the field using the hydrology indicators detailed in the Manual (USACE 1987) and the Supplement (USACE 2010). To determine whether wetland hydrology was present at a determination point, biologists considered the frequency and duration of inundation; used visual observation of saturation in the upper 12 inches of the soil profile; and used the presence of other primary wetland hydrology indicators, such as oxidized root channels, water-stained leaves, surface soil cracks, water marks (nonriverine), sediment deposits (nonriverine), or the presence of biotic crusts. Secondary indicators used to determine wetland hydrology consisted of drainage patterns, the presence of a dry-season water table, or saturation visible on aerial imagery. If the area contained one or more primary hydrology indicators or two or more secondary hydrology indicators, a positive hydrology determination was made.

3.3 Non-wetland Waters

The presence and extent of non-wetland water features (e.g., creeks, ponds, and constructed ditches) was determined in the field using the guidance and methods provided in the USACE Regulatory Guidance Letter 05-05 (USACE 2005) and the USACE technical guidance *National Ordinary High Water Mark Field Delineation Manual for Rivers and Streams: Final Version* (USACE 2025). An ordinary high water mark (OHWM) is the line on a shore established by fluctuations of water and is typically identified by physical characteristics, such as a clear, natural line impressed on the bank; shelving; changes in the character of soil; destruction of terrestrial vegetation; the presence of litter and debris; or other appropriate means that consider the characteristics of the surrounding areas. The spatial extent of non-wetland waters was delineated using the identified OHWM for each feature.

Due to the limited temporal scope of on-site observations, non-wetland waters were characterized hydrologically as relatively permanent or non-relatively permanent based on best professional judgment and in consideration of the results of the APT.

Additionally, SWCA assessed all NWI and NHD features mapped within the Project Area to determine whether wetlands or non-wetland waters were present. Representative photographs and/or determination points were also recorded in upland areas to document the presence or lack of wetlands or OHWMs.

4 RESULTS

Sections 4.1 and 4.2 present results of the desktop review and the field investigation.

4.1 Desktop Review

The desktop review identified locations of potential wetlands and streams within the Project Area. According to the USFWS NWI, the Project Area contains portions of one riverine system totaling 1.5 acres (USFWS 2023) (see Appendix A).

The USGS NHD indicates the Project Area encompasses portions of one intermittent stream totaling 0.5 mile (USGS 2022a) (Appendix A). This feature overlaps the above-noted NWI feature.

SWCA review of historical and aerial imagery did not indicate any additional areas with possible wetland signatures that warranted additional investigation during field delineations.

Land cover within the Project Area is depicted as herbaceous land (33.8 acres) and cultivated cropland (33.5 acres), with the primary crop being soybean. Other landcover types depicted within the Project Area consist of developed (3.2 acres), hay/pasture (1.2 acres), and barren land (0.2 acre) (USGS 2021) (see Appendix A).

Six mapped soil types are present within the Project Area (see Appendix A) according to the (NRCS 2024) (Table 1).

Table 1. Mapped Soil Types Within the Project Area

Soil Name	Hydric Rating	Drainage Class	Frequency of Flooding	Estimated Depth to Water Table (inches)	Acreage Within Project Area
McKranz-Hidewood, frequently flooded, silty clay loams, 0 to 2 percent slopes	Partially hydric	Somewhat poorly drained	None	15	14.7
Barnes-Buse-Svea loams, 1 to 6 percent slopes	Predominantly non-hydric	Well drained	None	75	50.9
Barnes-Buse-Svea loams, 2 to 9 percent slopes	Predominantly non-hydric	Well drained	None	75	2.8
Barnes-Buse loams, 6 to 9 percent slopes	Predominantly non-hydric	Well drained	None	125	0.3
Buse-Barnes loams, 9 to 20 percent slopes	Predominantly non-hydric	Well drained	None	125	2.1
Buse-Barnes loams, 2 to 15 percent slopes, very stony	Predominantly non-hydric	Well drained	None	125	1.0
TOTAL					71.8

Source: NRCS (2024).

The APT (USACE 2024) reports monthly precipitation data for the Project Area from January 2025 through August 2025 (see Appendix A). The APT report indicates that the delineations conducted in July 2025 occurred during wetter than normal field conditions.

4.2 Field Investigation

SWCA conducted a field investigation on July 30, 2025, to assess general site characteristics, ground-truth mapped features identified during the desktop analysis, and assess the potential for occurrence of unmapped wetlands or other aquatic resources. Representative photographs taken during field investigations are included in Appendix B.

4.2.1 Wetlands

The results provided in this report represent SWCA’s professional opinion based on SWCA’s knowledge and experience with the USACE, including the USACE’s regulatory guidance documents and manuals. Crowned Ridge I plans to use this information to avoid impacts to wetlands to the extent feasible.

SWCA delineated two wetlands (WET001, WET002) in the Project Area (Table 2; see Appendix A) and recorded one wetland determination point and one corresponding upland determination point for each wetland. The wetlands ranged in size from 9.9 acres to less than 0.1 acre. Both wetlands were classified as palustrine emergent (PEM) according to Cowardin classification system (Cowardin et al. 1979). A PEM wetland is a freshwater wetland characterized by emergent marsh, fen, or wet meadow.

Table 2. Field-Delineated Wetlands

Feature ID	Survey Date	Location		Surficial Connectivity	Acreage
		Longitude	Latitude		
WET001	07/30/2025	-96.920784	45.046985	Yes	9.90
WET002	07/30/2025	-96.922286	45.046139	No	0.03
Total					9.93

4.2.1.1 VEGETATION

The dominant plant species recorded at the wetland determination points for both wetlands consisted of reedtop (*Agrostis gigantea*). Foxtail barley (*Hordeum jubatum*) was also a dominant species in WET002.

Dominant vegetation types recorded at the upland determination points consisted of soybean (*Glycine max*) when within an agricultural field; and smooth brome (*Bromus inermis*) red clover (*Trifolium pratense*), common Timothy (*Phleum pratense*), sweetclover (*c*), and annual ragweed (*Ambrosia artemisiifolia*) when within uplands outside of agriculture fields.

Additional plant species documented during delineations are detailed in the wetland determination data forms provided in Appendix C.

4.2.1.2 SOILS

The primary soil textures within the wetlands are clay loams. The hydric soil indicators consist of depleted below dark surface (A11) and thick dark surface (A12). Soil profiles recorded in the field are detailed on the wetland determination data forms provided in Appendix C.

4.2.1.3 HYDROLOGY

Primary wetland hydrology indicators were only observed at WET002 and included surface water (A1), high water table (A2), and saturation (A3). The secondary wetland hydrology indicators observed at both wetlands consisted of geomorphic position (D2) and FAC-neutral test (D5). The wetland hydrology indicators recorded in the field are detailed on the wetland determination data forms provided in Appendix C.

4.2.2 Non-wetland Waters

Non-wetland waters were not observed in the Project Area.

5 CONCLUSIONS

SWCA delineated two wetlands totaling 9.93 acres in the Project Area. WET001 may have relatively permanent water connection to downstream WOTUS; however, WET002 appears to be isolated and therefore, non-WOTUS. The USACE has the ultimate authority in determining the presence and extent of WOTUS.

6 REFERENCES

- Bryce, S., J.M. Omernik, D.E. Pater, M. Ulmer, J. Schaar, J. Freeouf, R. Johnson, P. Kuck, and S.H. Azevedo. 1998. *Ecoregions of North Dakota and South Dakota*. Jamestown, North Dakota: Northern Prairie Wildlife Research Center.
- Commission for Environmental Cooperation (CEC). 1997. Ecological Regions of North America: Toward a Common Perspective. Available at: <http://www3.cec.org/islandora/en/item/1701-ecological-regions-north-america-toward-common-perspective>. Accessed September 2025.
- Cowardin, L.M., V. Carter, F.C. Golet, and E.T. LaRoe. 1979. *Classification of Wetlands and Deepwater Habitats of the United States*. FWS/OBS-79/31. Washington, D.C.: U.S. Fish and Wildlife Service.
- Google Earth. 2025. Historic and Current Imagery for Crowned Ridge 1 BESS site project area. Accessed September 2025.
- Natural Resource Conservation Service (NRCS). 2024 Web Soil Survey. Available at: <http://websoilsurvey.sc.egov.usda.gov/App/HomePage.htm>. Accessed September 2025.
- U.S. Army Corps of Engineers (USACE). 1987. *Corps of Engineers Wetland Delineation Manual*. Technical Report Y-87-1. Vicksburg, Mississippi: U.S. Army Engineers Waterways Experiment Station.
- . 2005. *Regulatory Guidance Letter: Ordinary High Water Mark Identification*. No. 05-05. Available at: <https://www.nap.usace.army.mil/Portals/39/docs/regulatory/rgls/rgl05-05.pdf>. Accessed September 2025.
- . 2010. *Regional Supplement to the Corps of Engineers Wetland Delineation Manual: Midwest Region (Version 2.0)*. ERDC/EL TR-10-16. Vicksburg, Mississippi: U.S. Army Engineer Research and Development Center, Environmental Laboratory.
- . 2024. Antecedent Precipitation Tool. Available at: <https://github.com/jDeters-USACE/Antecedent-Precipitation-Tool/releases/tag/v1.0.19>. Accessed July 2025.
- . 2023. 2022 National Wetland Plant List, Version 3.6. U.S. Army Engineer Research and Development Center, Vicksburg, Mississippi. Available at: <http://wetland-plants.usace.army.mil/>. Accessed July 2025.
- . 2025. *National Ordinary High Water Mark Field Delineation Manual for Rivers and Streams: Final Version.*, edited by G.C.L. David, K.M. Fritz, T.L. Nadeau, B.J. Topping, A.O. Allen, P.H. Trier, S.L. Kichefski, L.A. James, E. Wohl, and D. Hamill. ERDC/CRREL TR-25-1. Hanover, New Hampshire: U.S. Army Engineer Research and Development Center. Available at: <https://erdc-library.erd.c.dren.mil/items/76c61f8f-6d75-4a35-aaf3-39aa64918afb>. Accessed August 2025.
- U.S. Department of Agriculture. 2018. *Field Indicators of Hydric Soils in the United States: A Guide for Identifying and Delineating Hydric Soils, Version 8.2*. Prepared in cooperation with the National Technical Committee for Hydric Soils. Edited by L.M. Vasilas, G.W. Hurt, and J.F. Berkowitz. U.S. Department of Agriculture, Natural Resources Conservation Service.

U.S. Fish and Wildlife Service (USFWS). 2023. National Wetlands Inventory. Available at:
<http://www.fws.gov/wetlands/>. Accessed September 2025.

U.S. Geological Survey (USGS). 2021. National Land Cover Database 2019 Products (ver. 2.0, June
2021): U.S. Geological Survey data release. Available at: [https://www.sciencebase.gov/
catalog/item/5f21cef582cef313ed940043](https://www.sciencebase.gov/catalog/item/5f21cef582cef313ed940043). Accessed September 2025.

———. 2022a. National Hydrography Dataset (NHD). Available at: [https://www.usgs.gov/national-
hydrography/access-national-hydrography-products](https://www.usgs.gov/national-hydrography/access-national-hydrography-products). Accessed September 2025.

———. 2022b. The National Map Download Client. Available at:
<https://apps.nationalmap.gov/downloader/>. Accessed September 2025.

APPENDIX A

Figures

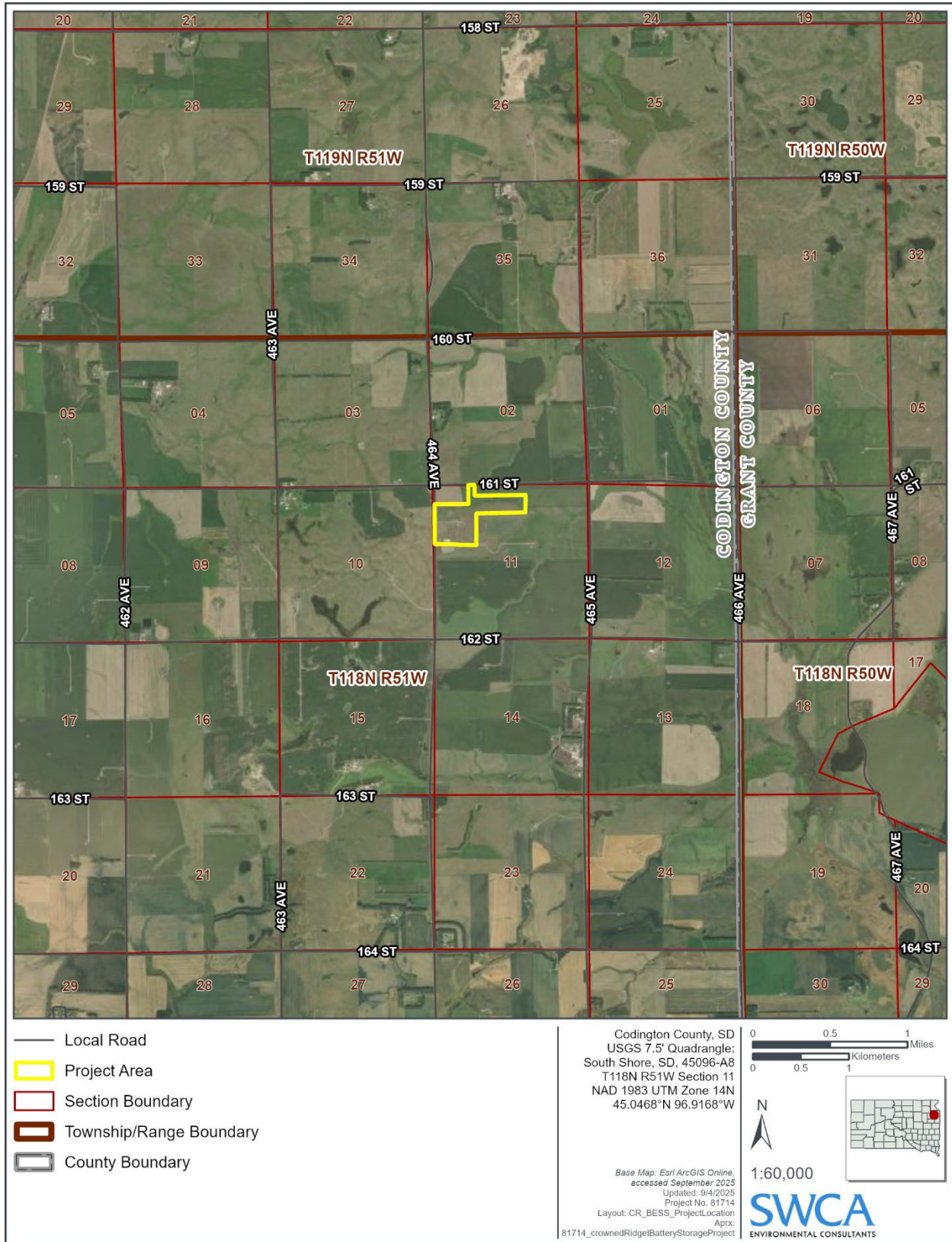


Figure A-1. Project Area location.

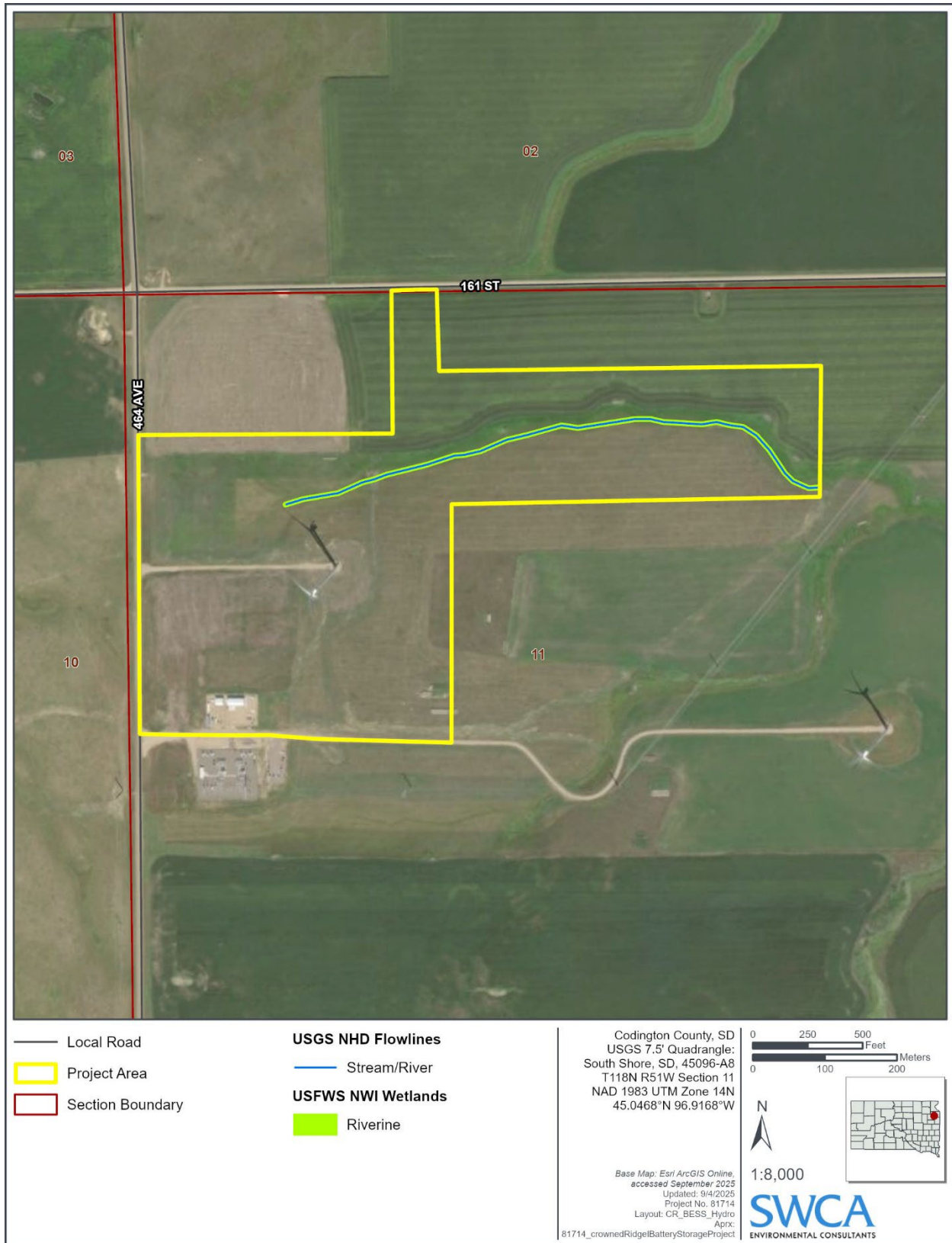


Figure A-2. NWI and NHD data for the Project Area.

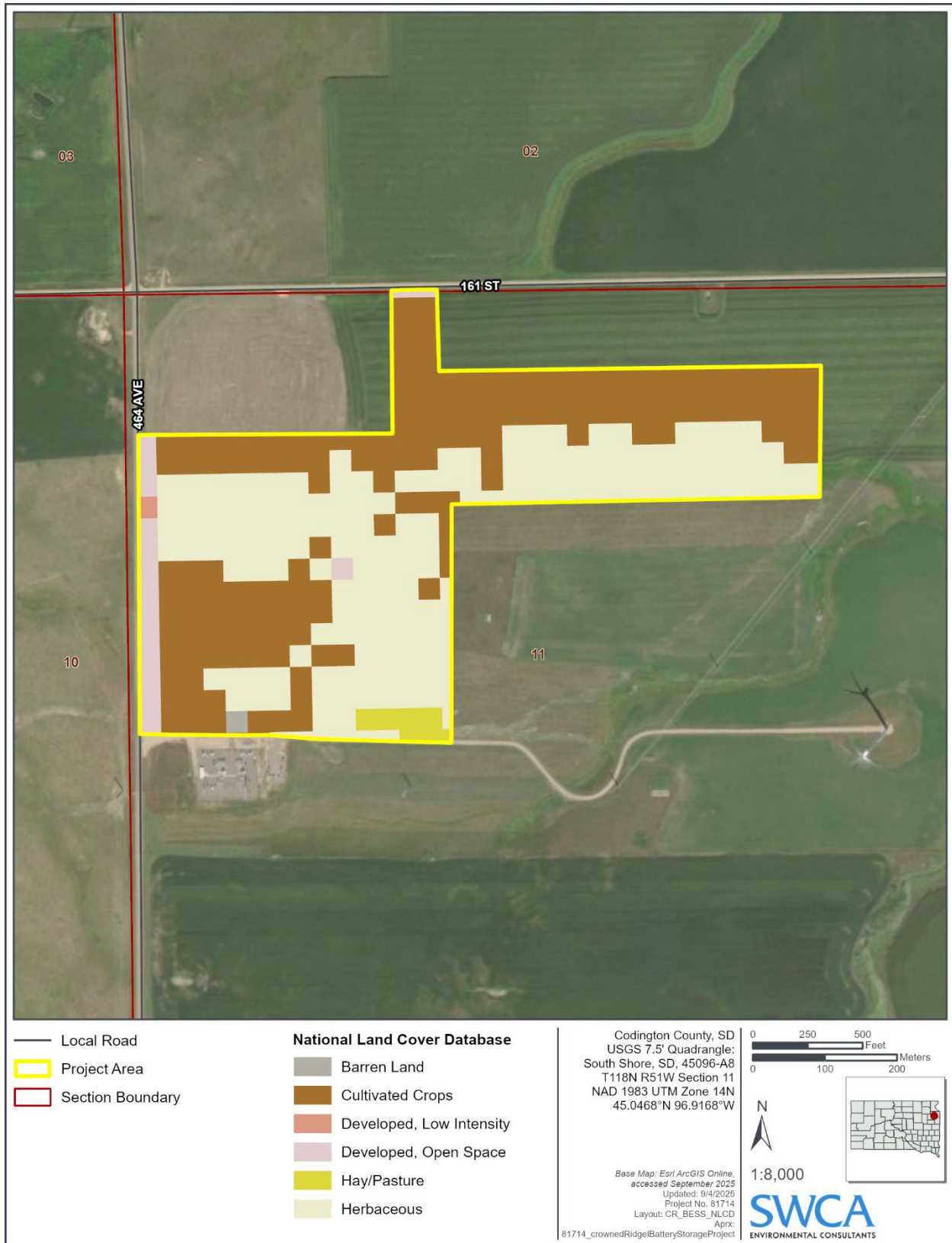


Figure A-3. National Land Cover Data in the Project Area.

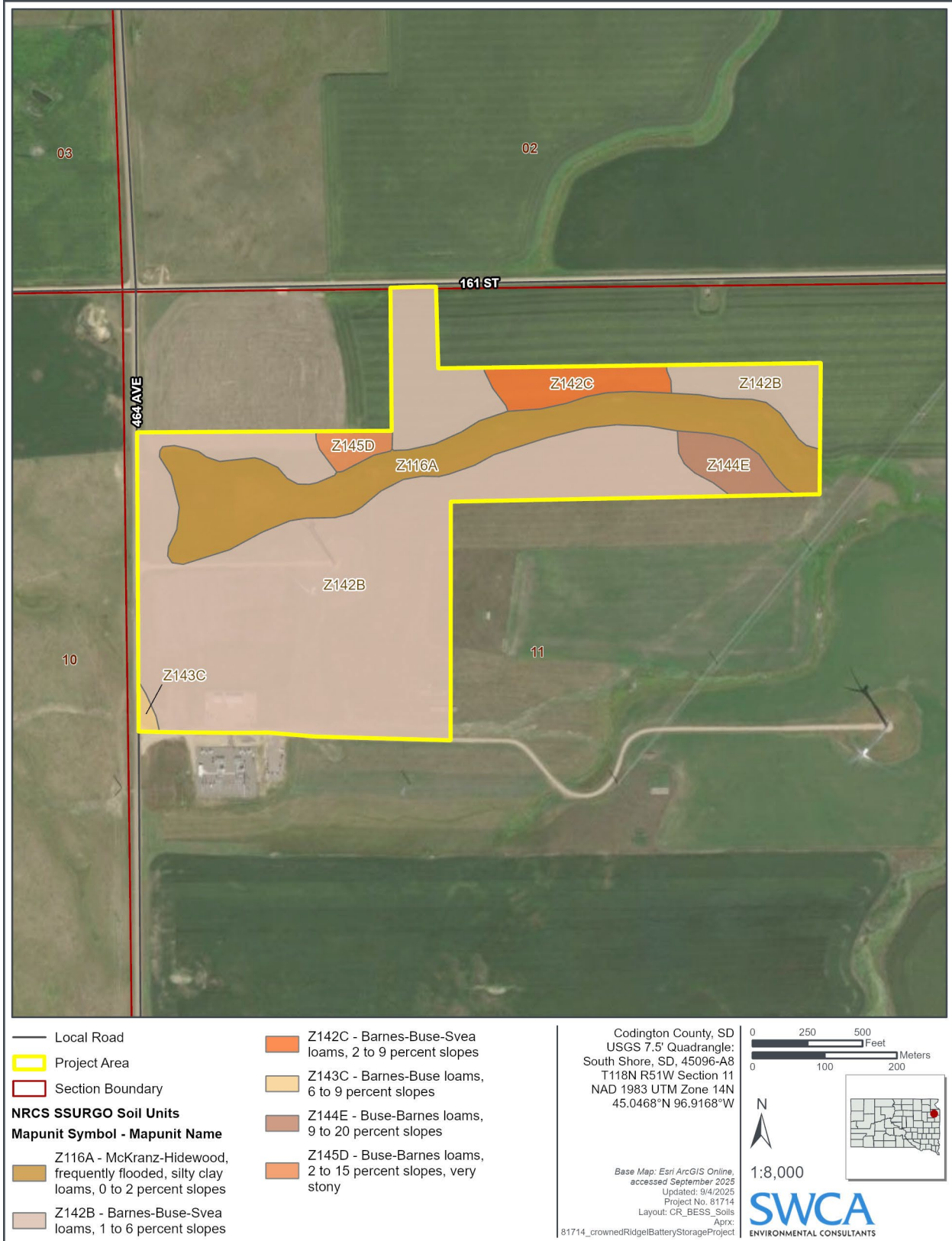


Figure A-4. Soil types in the Project Area.

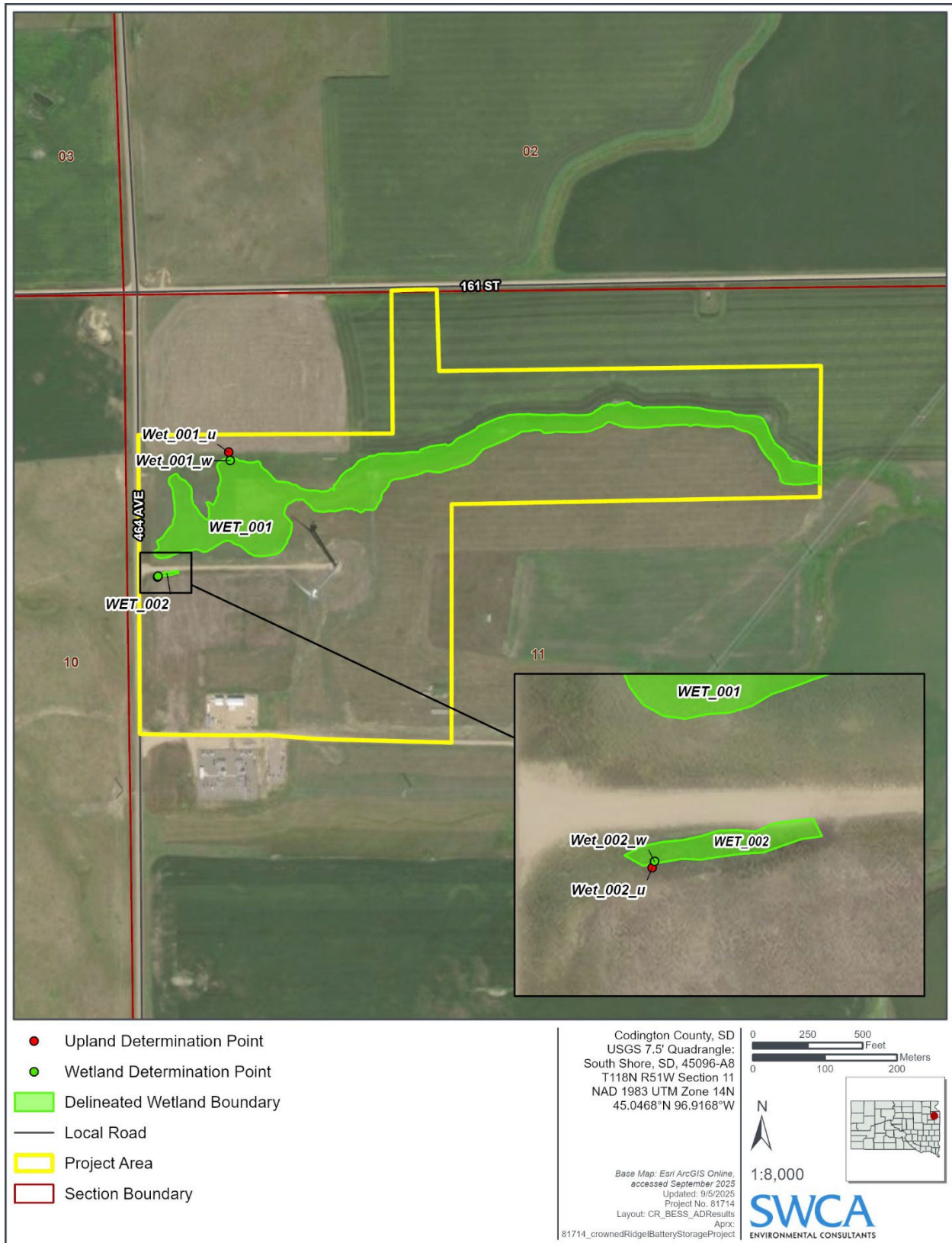
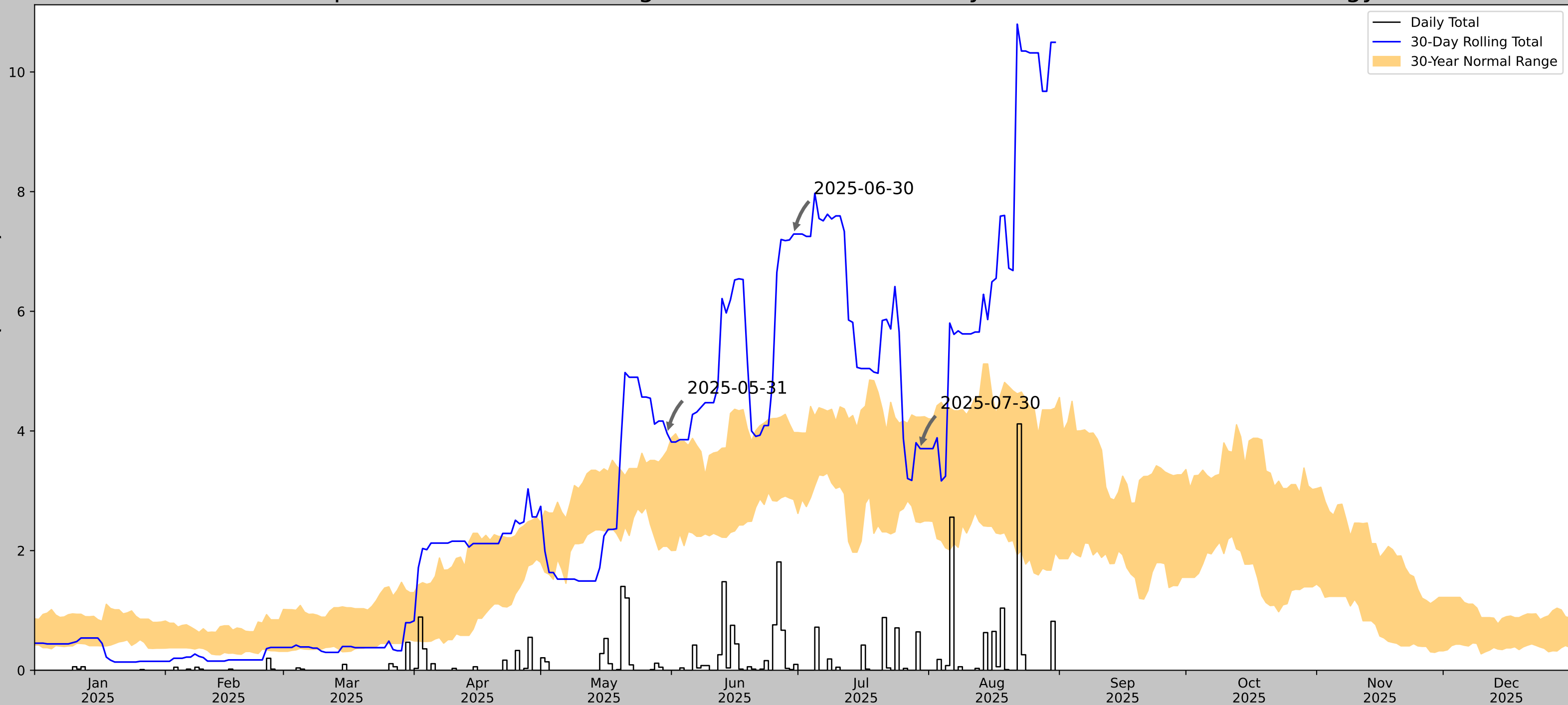


Figure A-5. Delineated wetlands in the Project Area.

Antecedent Precipitation vs Normal Range based on NOAA's Daily Global Historical Climatology Network

Rainfall (Inches)



Coordinates	45.046, -96.91962
Observation Date	2025-07-30
Elevation (ft)	1983.613
Drought Index (PDSI)	Moderate wetness
WebWIMP H ₂ O Balance	Dry Season

30 Days Ending	30 th %ile (in)	70 th %ile (in)	Observed (in)	Wetness Condition	Condition Value	Month Weight	Product
2025-07-30	2.468898	4.23189	3.704725	Normal	2	3	6
2025-06-30	2.854725	3.973228	7.291339	Wet	3	2	6
2025-05-31	2.071654	3.670079	3.956693	Wet	3	1	3
Result							Wetter than Normal - 15

Figures and tables made by the
Antecedent Precipitation Tool
Version 3.0



US Army Corps
of Engineers



Developed by:
U.S. Army Corps of Engineers and
U.S. Army Engineer Research and
Development Center

Weather Station Name	Coordinates	Elevation (ft)	Distance (mi)	Elevation Δ	Weighted Δ	Days Normal	Days Antecedent
SUMMIT 1 W	45.3036, -97.0625	1955.053	19.111	28.56	9.146	11295	90
WATERTOWN 7.6 ENE	44.959, -97.0247	1902.887	23.881	52.166	11.992	7	0
WATERTOWN 7.5 NNE	45.0043, -97.0857	1780.84	20.711	174.213	12.928	2	0
WILMOT	45.4078, -96.8619	1201.116	12.112	753.937	14.582	49	0

APPENDIX B

Representative Photographs



Figure B-1. Overview of the palustrine emergent wetland WET001 at Wet_001_w, facing south. Photograph taken by S. Rosche on July 30, 2025.



Figure B-2. Overview of the palustrine emergent wetland WET002 at Wet_002_w, facing east. Photograph taken by S. Rosche on July 30, 2025.

APPENDIX C

Wetland Determination Data Forms

WETLAND DETERMINATION DATA FORM — Midwest Region

Project/Site: Crowned Ridge BESS 1 City/County: Codington Sampling Date: 07/30/2025

Applicant/Owner: NextEra State: SD Sampling Point: WET_001_U

Investigator(s): Sarah Rosche/ Section, Township, Range: Sec. 11 T118N R51W

Landform (hillslope, terrace, etc.): Flood Plain Local relief (concave, convex, none): Linear Slope

Slope (%): <5% Lat: 45.0476546 Long: -96.9211896 Datum: WGS84

Soil Map Unit Name: Z142B - Barnes-Buse-Svea loams, 1 to 6 percent slopes NWI classification: No

Are climatic / hydrologic conditions on the site typical for this time of year? Yes No (If no, explain in Remarks.)

Are Vegetation , Soil , or Hydrology significantly disturbed? Are "Normal Circumstances" present? Yes No

Are Vegetation , Soil , or Hydrology naturally problematic? (If needed, explain any answers in Remarks.)

SUMMARY OF FINDINGS — Attach site map showing sampling point locations, transects, important features, etc.

Hydrophytic Vegetation Present?	Yes: <input type="checkbox"/>	No: <input checked="" type="checkbox"/>	Is the Sampled Area within a Wetland?	Yes <input type="checkbox"/> No <input checked="" type="checkbox"/>
Hydric Soil Present?	Yes: <input type="checkbox"/>	No: <input checked="" type="checkbox"/>		
Wetland Hydrology Present?	Yes: <input type="checkbox"/>	No: <input checked="" type="checkbox"/>		

Remarks: wetter than normal conditions

VEGETATION - Use scientific names of plants.

Tree Stratum: (Plot size: 30)	Absolute % Cover	Dominant Species?	Indicator Status	Dominance Test worksheet: Number of Dominant Species That Are OBL, FACW, or FAC: <u>0</u> (A) Total Number of Dominant Species Across All Strata: <u>1</u> (B) Percent of Domant Species That Are OBL, FACW, or FAC: <u>0</u> (A/B)																																
1.																																				
2.																																				
3.																																				
4.																																				
5.																																				
	<u>0</u>	=Total Cover																																		
Sapling/Shrub Stratum: (Plot size: 15)				Prevalence Index worksheet: <table border="0"> <tr> <td align="center" colspan="2">Total % Cover of:</td> <td align="center" colspan="2">Multiply by:</td> </tr> <tr> <td>OBL species</td><td align="center"><u>0</u></td> <td>x 1 =</td><td align="center"><u>0</u></td> </tr> <tr> <td>FACW species</td><td align="center"><u>5</u></td> <td>x 2 =</td><td align="center"><u>10</u></td> </tr> <tr> <td>FAC species</td><td align="center"><u>5</u></td> <td>x 3 =</td><td align="center"><u>15</u></td> </tr> <tr> <td>FACU species</td><td align="center"><u>5</u></td> <td>x 4 =</td><td align="center"><u>20</u></td> </tr> <tr> <td>UPL species</td><td align="center"><u>75</u></td> <td>x 5 =</td><td align="center"><u>375</u></td> </tr> <tr> <td>Column Totals:</td><td align="center"><u>90</u> (A)</td><td></td><td align="center"><u>420</u> (B)</td> </tr> <tr> <td></td><td align="center" colspan="3">Prevalence Index = B/A = <u>4.67</u></td> </tr> </table>	Total % Cover of:		Multiply by:		OBL species	<u>0</u>	x 1 =	<u>0</u>	FACW species	<u>5</u>	x 2 =	<u>10</u>	FAC species	<u>5</u>	x 3 =	<u>15</u>	FACU species	<u>5</u>	x 4 =	<u>20</u>	UPL species	<u>75</u>	x 5 =	<u>375</u>	Column Totals:	<u>90</u> (A)		<u>420</u> (B)		Prevalence Index = B/A = <u>4.67</u>		
Total % Cover of:		Multiply by:																																		
OBL species	<u>0</u>	x 1 =	<u>0</u>																																	
FACW species	<u>5</u>	x 2 =	<u>10</u>																																	
FAC species	<u>5</u>	x 3 =	<u>15</u>																																	
FACU species	<u>5</u>	x 4 =	<u>20</u>																																	
UPL species	<u>75</u>	x 5 =	<u>375</u>																																	
Column Totals:	<u>90</u> (A)		<u>420</u> (B)																																	
	Prevalence Index = B/A = <u>4.67</u>																																			
1.																																				
2.																																				
3.																																				
4.																																				
5.																																				
	<u>0</u>	=Total Cover																																		
Herb Stratum: (Plot size: 5)				Hydrophytic Vegetation Indicators: <input type="checkbox"/> 1 - Rapid test for Hydrophytic Vegetation <input type="checkbox"/> 2 - Dominance Test is >50% <input type="checkbox"/> 3 - Prevalence Index is ≤3.0 ¹ <input type="checkbox"/> 4 - Morphological Adaptations ¹ (Profice supporting data in Remarks or on a separate sheet) <input type="checkbox"/> Problematic Hydrophytic Vegetation ¹ (Explain) ¹ Indicators of hydric soil and wetland hydrology must be present, unless disturbed or problematic.																																
1. <i>Glycine max</i>	75	Y	UPL																																	
2. <i>Bromus inermis</i>	5	N	FACU																																	
3. <i>Setaria pumila</i>	5	N	FAC																																	
4. <i>Persicaria maculosa</i>	5	N	FACW																																	
5.																																				
6.																																				
7.																																				
8.																																				
9.																																				
10.																																				
	<u>90</u>	=Total Cover																																		
Woody Vine Stratum: (Plot size: 30)				Hydrophytic Vegetation Present? Yes <input type="checkbox"/> No <input checked="" type="checkbox"/>																																
1.																																				
2.																																				
	<u>0</u>	=Total Cover																																		

Remarks: (Include photo numbers here or on a separate sheet.) Edge of soy bean field

SOIL

Sampling Point: WET_001_U

Profile Description: (Describe to the depth needed to document the indicator or confirm the absence of indicators.)

Depth (inches)	Matrix		Redox Features				Texture	Remarks
	Color (moist)	%	Color (moist)	%	Type ¹	Loc ²		
0-5	10YR 2/1	100		0			Silty Clay Loam	
5-12	10YR 3/2	100		0			Silty Clay Loam	
12-24	10YR 3/1	100		0			Silty Clay Loam	

¹Type: C=Concentration, D=Depletion, RM=Reduced Matrix, MS=Masked Sand Grains. ²Location: PL=Pore Lining, M=Matrix.

Hydric Soil Indicators: <input type="checkbox"/> Histosol (A1) <input type="checkbox"/> Histic Epipedon (A2) <input type="checkbox"/> Black Histic (A3) <input type="checkbox"/> Hydrogen Sulfide (A4) <input type="checkbox"/> Stratified Layers (A5) <input type="checkbox"/> 2 cm Muck (A10) <input type="checkbox"/> Depleted Below Dark Surface (A11) <input type="checkbox"/> Thick Dark Surface (A12) <input type="checkbox"/> Sandy Mucky Mineral (S1) <input type="checkbox"/> 5 cm Mucky Peat or Peat (S3)		<input type="checkbox"/> Sandy Gleyed Matrix (S4) <input type="checkbox"/> Sandy Redox (S5) <input type="checkbox"/> Stripped Matrix (S6) <input type="checkbox"/> Loamy Mucky Mineral (F1) <input type="checkbox"/> Loamy Gleyed Matrix (F2) <input type="checkbox"/> Depleted Matrix (F3) <input type="checkbox"/> Redox Dark Surface (F6) <input type="checkbox"/> Depleted Dark Surface (F7) <input type="checkbox"/> Redox Depressions (F8)		Indicators for Problematic Hydric Soils³: <input type="checkbox"/> Coast Prairie Redox (A16) <input type="checkbox"/> Dark Surface (S7) <input type="checkbox"/> Iron-Manganese Masses (F12) <input type="checkbox"/> Very Shallow Dark Surface (TF12) <input type="checkbox"/> Other (Explain in Remarks)	
---	--	--	--	---	--

³Indicators of hydrophytic vegetation and wetland hydrology must be present, unless disturbed or problematic.

Restrictive Layer (if observed): Type: _____ Depth (inches): _____	Hydric Soil Present? Yes <input type="checkbox"/> No <input checked="" type="checkbox"/>
---	---

Remarks:

HYDROLOGY

Wetland Hydrology Indicators: <u>Primary indicators (minimum of one required: check all that apply)</u>		<u>Secondary indicators (minimum of two required)</u>	
<input type="checkbox"/> Surface Water (A1)	<input type="checkbox"/> Water-Stained Leaves (B9)	<input type="checkbox"/> Surface Soil Cracks (B6)	
<input type="checkbox"/> High Water Table (A2)	<input type="checkbox"/> Aquatic Fauna (B13)	<input type="checkbox"/> Drainage Patterns (B10)	
<input type="checkbox"/> Saturation (A3)	<input type="checkbox"/> True Aquatic Plants (B14)	<input type="checkbox"/> Dry-Season Water Table (C2)	
<input type="checkbox"/> Water Marks (B1)	<input type="checkbox"/> Hydrogen Sulfide Odor (C1)	<input type="checkbox"/> Crayfish Burrows (C8)	
<input type="checkbox"/> Sediment Deposits (B2)	<input type="checkbox"/> Oxidized Rhizospheres on Living Roots (C3)	<input type="checkbox"/> Saturation Visible on Aerial Imagery (C9)	
<input type="checkbox"/> Drift Deposits (B3)	<input type="checkbox"/> Presence of Reduced Iron (C4)	<input type="checkbox"/> Stunted or Stressed Plants (D1)	
<input type="checkbox"/> Algal Mat or Crust (B4)	<input type="checkbox"/> Recent Iron Reduction in Tilled Soils (C6)	<input type="checkbox"/> Geomorphic Position (D2)	
<input type="checkbox"/> Iron Deposits (B5)	<input type="checkbox"/> Thin Muck Surface (C7)	<input type="checkbox"/> FAC-Neutral Test (D5)	
<input type="checkbox"/> Inundation Visible on Aerial Imagery (B7)	<input type="checkbox"/> Gauge or Well Data (D9)		
<input type="checkbox"/> Sparsely Vegetated Concave Surface (B8)	<input type="checkbox"/> Other (Explain in Remarks)		

Field Observations: Surface Water Present? Yes <input type="checkbox"/> No <input checked="" type="checkbox"/> Depth (inches): _____ Water Table Present? Yes <input type="checkbox"/> No <input checked="" type="checkbox"/> Depth (inches): _____ Saturation Present? Yes <input type="checkbox"/> No <input checked="" type="checkbox"/> Depth (inches): _____ (includes capillary fringe)	Wetland Hydrology Present? Yes <input type="checkbox"/> No <input checked="" type="checkbox"/>
---	---

Describe Recorded Data (stream gauge, monitoring well, aerial photos, previous inspections), if available:

Remarks: None observed

WETLAND DETERMINATION DATA FORM — Midwest Region

Project/Site: Crowned Ridge BESS 1 City/County: Codington Sampling Date: 07/30/2025

Applicant/Owner: NextEra State: SD Sampling Point: WET_001_W

Investigator(s): Sarah Rosche/ Section, Township, Range: Sec. 11 T118N R51W

Landform (hillslope, terrace, etc.): Flood Plain Local relief (concave, convex, none): Concave

Slope (%): <5% Lat: 45.0475517 Long: -96.9211592 Datum: WGS84

Soil Map Unit Name: Z142B - Barnes-Buse-Svea loams, 1 to 6 percent slopes NWI classification: No

Are climatic / hydrologic conditions on the site typical for this time of year? Yes No (If no, explain in Remarks.)

Are Vegetation , Soil , or Hydrology significantly disturbed? Are "Normal Circumstances" present? Yes No

Are Vegetation , Soil , or Hydrology naturally problematic? (If needed, explain any answers in Remarks.)

SUMMARY OF FINDINGS — Attach site map showing sampling point locations, transects, important features, etc.

Hydrophytic Vegetation Present? Yes: <input checked="" type="checkbox"/> No: <input type="checkbox"/> Hydric Soil Present? Yes: <input checked="" type="checkbox"/> No: <input type="checkbox"/> Wetland Hydrology Present? Yes: <input checked="" type="checkbox"/> No: <input type="checkbox"/>	Is the Sampled Area within a Wetland? Yes <input checked="" type="checkbox"/> No <input type="checkbox"/>
Remarks: wetter than normal conditions	

VEGETATION - Use scientific names of plants.

	Absolute % Cover	Dominant Species?	Indicator Status																																	
Tree Stratum: (Plot size: 30)																																				
1. _____	_____	_____	_____	Dominance Test worksheet: Number of Dominant Species That Are OBL, FACW, or FAC: <u>1</u> (A) Total Number of Dominant Species Across All Strata: <u>1</u> (B) Percent of Domant Species That Are OBL, FACW, or FAC: <u>100</u> (A/B)																																
2. _____	_____	_____	_____																																	
3. _____	_____	_____	_____																																	
4. _____	_____	_____	_____																																	
5. _____	_____	_____	_____																																	
0 =Total Cover																																				
Sapling/Shrub Stratum: (Plot size: 15)																																				
1. _____	_____	_____	_____	Prevalence Index worksheet: <table style="width:100%; border-collapse: collapse;"> <tr> <td align="center" colspan="2">Total % Cover of:</td> <td align="center" colspan="2">Multiply by:</td> </tr> <tr> <td>OBL species</td><td align="center">10</td> <td>x 1 =</td><td align="center">10</td> </tr> <tr> <td>FACW species</td><td align="center">80</td> <td>x 2 =</td><td align="center">160</td> </tr> <tr> <td>FAC species</td><td align="center">0</td> <td>x 3 =</td><td align="center">0</td> </tr> <tr> <td>FACU species</td><td align="center">0</td> <td>x 4 =</td><td align="center">0</td> </tr> <tr> <td>UPL species</td><td align="center">0</td> <td>x 5 =</td><td align="center">0</td> </tr> <tr> <td>Column Totals:</td><td align="center">90 (A)</td> <td></td><td align="center">170 (B)</td> </tr> <tr> <td align="right" colspan="4">Prevalence Index = B/A= <u>1.89</u></td> </tr> </table>	Total % Cover of:		Multiply by:		OBL species	10	x 1 =	10	FACW species	80	x 2 =	160	FAC species	0	x 3 =	0	FACU species	0	x 4 =	0	UPL species	0	x 5 =	0	Column Totals:	90 (A)		170 (B)	Prevalence Index = B/A= <u>1.89</u>			
Total % Cover of:		Multiply by:																																		
OBL species	10	x 1 =	10																																	
FACW species	80	x 2 =	160																																	
FAC species	0	x 3 =	0																																	
FACU species	0	x 4 =	0																																	
UPL species	0	x 5 =	0																																	
Column Totals:	90 (A)		170 (B)																																	
Prevalence Index = B/A= <u>1.89</u>																																				
2. _____	_____	_____	_____																																	
3. _____	_____	_____	_____																																	
4. _____	_____	_____	_____																																	
5. _____	_____	_____	_____																																	
0 =Total Cover																																				
Herb Stratum: (Plot size: 5)																																				
1. <u>Agrostis gigantea</u>	60	Y	FACW	Hydrophytic Vegetation Indicators: ___ 1 - Rapid test for Hydrophytic Vegetation <u>X</u> 2 - Dominance Test is >50% <u>X</u> 3 - Prevalence Index is ≤3.0 ¹ ___ 4 - Morphological Adaptations ¹ (Profice supporting data in Remarks or on a separate sheet) ___ Problematic Hydrophytic Vegetation ¹ (Explain) ¹ Indicators of hydric soil and wetland hydrology must be present, unless disturbed or problematic.																																
2. <u>Phalaris arundinacea</u>	10	N	FACW																																	
3. <u>Juncus torreyi</u>	10	N	FACW																																	
4. <u>Scirpus atrovirens</u>	5	N	OBL																																	
5. <u>Eleocharis palustris</u>	5	N	OBL																																	
6. _____	_____	_____	_____																																	
7. _____	_____	_____	_____																																	
8. _____	_____	_____	_____																																	
9. _____	_____	_____	_____																																	
10. _____	_____	_____	_____																																	
90 =Total Cover																																				
Woody Vine Stratum: (Plot size: 30)																																				
1. _____	_____	_____	_____	Hydrophytic Vegetation Present? Yes <input checked="" type="checkbox"/> No <input type="checkbox"/>																																
2. _____	_____	_____	_____																																	
0 =Total Cover																																				
Remarks: (Include photo numbers here or on a separate sheet.)																																				

SOIL

Sampling Point: WET_001_W

Profile Description: (Describe to the depth needed to document the indicator or confirm the absence of indicators.)

Depth (inches)	Matrix		Redox Features				Texture	Remarks
	Color (moist)	%	Color (moist)	%	Type ¹	Loc ²		
0-12	10YR 2/1	100		0			Clay Loam	
12-20	10YR 4/2	97	10YR 4/4	3	C	M	Clay Loam	

¹Type: C=Concentration, D=Depletion, RM=Reduced Matrix, MS=Masked Sand Grains. ²Location: PL=Pore Lining, M=Matrix.

Hydric Soil Indicators:		Indicators for Problematic Hydric Soils³:	
<input type="checkbox"/> Histosol (A1)	<input type="checkbox"/> Sandy Gleyed Matrix (S4)	<input type="checkbox"/> Coast Prairie Redox (A16)	
<input type="checkbox"/> Histic Epipedon (A2)	<input type="checkbox"/> Sandy Redox (S5)	<input type="checkbox"/> Dark Surface (S7)	
<input type="checkbox"/> Black Histic (A3)	<input type="checkbox"/> Stripped Matrix (S6)	<input type="checkbox"/> Iron-Manganese Masses (F12)	
<input type="checkbox"/> Hydrogen Sulfide (A4)	<input type="checkbox"/> Loamy Mucky Mineral (F1)	<input type="checkbox"/> Very Shallow Dark Surface (TF12)	
<input type="checkbox"/> Stratified Layers (A5)	<input type="checkbox"/> Loamy Gleyed Matrix (F2)	<input type="checkbox"/> Other (Explain in Remarks)	
<input type="checkbox"/> 2 cm Muck (A10)	<input type="checkbox"/> Depleted Matrix (F3)		
<input type="checkbox"/> Depleted Below Dark Surface (A11)	<input type="checkbox"/> Redox Dark Surface (F6)		
<input checked="" type="checkbox"/> Thick Dark Surface (A12)	<input type="checkbox"/> Depleted Dark Surface (F7)		
<input type="checkbox"/> Sandy Mucky Mineral (S1)	<input type="checkbox"/> Redox Depressions (F8)		
<input type="checkbox"/> 5 cm Mucky Peat or Peat (S3)			

³Indicators of hydrophytic vegetation and wetland hydrology must be present, unless disturbed or problematic.

Restrictive Layer (if observed): Type: <u>gravel</u> Depth (inches): <u>20</u>	Hydric Soil Present? Yes <input checked="" type="checkbox"/> No <input type="checkbox"/>
---	---

Remarks:

HYDROLOGY

Wetland Hydrology Indicators:	
<u>Primary indicators (minimum of one required: check all that apply)</u>	<u>Secondary indicators (minimum of two required)</u>
<input type="checkbox"/> Surface Water (A1)	<input type="checkbox"/> Water-Stained Leaves (B9)
<input type="checkbox"/> High Water Table (A2)	<input type="checkbox"/> Aquatic Fauna (B13)
<input type="checkbox"/> Saturation (A3)	<input type="checkbox"/> True Aquatic Plants (B14)
<input type="checkbox"/> Water Marks (B1)	<input type="checkbox"/> Hydrogen Sulfide Odor (C1)
<input type="checkbox"/> Sediment Deposits (B2)	<input type="checkbox"/> Oxidized Rhizospheres on Living Roots (C3)
<input type="checkbox"/> Drift Deposits (B3)	<input type="checkbox"/> Presence of Reduced Iron (C4)
<input type="checkbox"/> Algal Mat or Crust (B4)	<input type="checkbox"/> Recent Iron Reduction in Tilled Soils (C6)
<input type="checkbox"/> Iron Deposits (B5)	<input type="checkbox"/> Thin Muck Surface (C7)
<input type="checkbox"/> Inundation Visible on Aerial Imagery (B7)	<input type="checkbox"/> Gauge or Well Data (D9)
<input type="checkbox"/> Sparsely Vegetated Concave Surface (B8)	<input type="checkbox"/> Other (Explain in Remarks)
<input type="checkbox"/> Surface Soil Cracks (B6)	
<input type="checkbox"/> Drainage Patterns (B10)	
<input type="checkbox"/> Dry-Season Water Table (C2)	
<input type="checkbox"/> Crayfish Burrows (C8)	
<input type="checkbox"/> Saturation Visible on Aerial Imagery (C9)	
<input type="checkbox"/> Stunted or Stressed Plants (D1)	
<input checked="" type="checkbox"/> Geomorphic Position (D2)	
<input checked="" type="checkbox"/> FAC-Neutral Test (D5)	

Field Observations: Surface Water Present? Yes <input type="checkbox"/> No <input checked="" type="checkbox"/> Depth (inches): _____ Water Table Present? Yes <input type="checkbox"/> No <input checked="" type="checkbox"/> Depth (inches): _____ Saturation Present? Yes <input type="checkbox"/> No <input checked="" type="checkbox"/> Depth (inches): _____ (includes capillary fringe)	Wetland Hydrology Present? Yes <input checked="" type="checkbox"/> No <input type="checkbox"/>
---	---

Describe Recorded Data (stream gauge, monitoring well, aerial photos, previous inspections), if available:

Remarks:

WETLAND DETERMINATION DATA FORM — Midwest Region

Project/Site: Crowned Ridge BESS 1 City/County: Codington Sampling Date: 07/30/2025

Applicant/Owner: NextEra State: SD Sampling Point: WET_002_U

Investigator(s): Sarah Rosche/ Section, Township, Range: Sec. 11 T118N R51W

Landform (hillslope, terrace, etc.): Depression Local relief (concave, convex, none): Linear Slope

Slope (%): <5% Lat: 45.0461168 Long: -96.922455 Datum: WGS84

Soil Map Unit Name: Z142B - Barnes-Buse-Svea loams, 1 to 6 percent slopes NWI classification: No

Are climatic / hydrologic conditions on the site typical for this time of year? Yes No X (If no, explain in Remarks.)

Are Vegetation , Soil , or Hydrology significantly disturbed? Are "Normal Circumstances" present? Yes X No

Are Vegetation , Soil , or Hydrology naturally problematic? (If needed, explain any answers in Remarks.)

SUMMARY OF FINDINGS — Attach site map showing sampling point locations, transects, important features, etc.

Hydrophytic Vegetation Present?	Yes: <u> </u>	No: <u> X </u>	Is the Sampled Area within a Wetland?	Yes <u> </u>	No <u> X </u>
Hydric Soil Present?	Yes: <u> </u>	No: <u> X </u>			
Wetland Hydrology Present?	Yes: <u> </u>	No: <u> X </u>			
Remarks: <u>wetter than normal conditions</u>					

VEGETATION - Use scientific names of plants.

<p><u>Tree Stratum:</u> (Plot size: <u>30</u>)</p> <table style="width:100%; border-collapse: collapse;"> <thead> <tr> <th style="width:30%;"></th> <th style="width:10%;">Absolute % Cover</th> <th style="width:10%;">Dominant Species?</th> <th style="width:10%;">Indicator Status</th> </tr> </thead> <tbody> <tr><td>1. <u> </u></td><td><u> </u></td><td><u> </u></td><td><u> </u></td></tr> <tr><td>2. <u> </u></td><td><u> </u></td><td><u> </u></td><td><u> </u></td></tr> <tr><td>3. <u> </u></td><td><u> </u></td><td><u> </u></td><td><u> </u></td></tr> <tr><td>4. <u> </u></td><td><u> </u></td><td><u> </u></td><td><u> </u></td></tr> <tr><td>5. <u> </u></td><td><u> </u></td><td><u> </u></td><td><u> </u></td></tr> <tr><td colspan="4" style="text-align: right;"><u>0</u> =Total Cover</td></tr> </tbody> </table> <p><u>Sapling/Shrub Stratum:</u> (Plot size: <u>15</u>)</p> <table style="width:100%; border-collapse: collapse;"> <thead> <tr> <th style="width:30%;"></th> <th style="width:10%;">Absolute % Cover</th> <th style="width:10%;">Dominant Species?</th> <th style="width:10%;">Indicator Status</th> </tr> </thead> <tbody> <tr><td>1. <u> </u></td><td><u> </u></td><td><u> </u></td><td><u> </u></td></tr> <tr><td>2. <u> </u></td><td><u> </u></td><td><u> </u></td><td><u> </u></td></tr> <tr><td>3. <u> </u></td><td><u> </u></td><td><u> </u></td><td><u> </u></td></tr> <tr><td>4. <u> </u></td><td><u> </u></td><td><u> </u></td><td><u> </u></td></tr> <tr><td>5. <u> </u></td><td><u> </u></td><td><u> </u></td><td><u> </u></td></tr> <tr><td colspan="4" style="text-align: right;"><u>0</u> =Total Cover</td></tr> </tbody> </table> <p><u>Herb Stratum:</u> (Plot size: <u>5</u>)</p> <table style="width:100%; border-collapse: collapse;"> <thead> <tr> <th style="width:30%;"></th> <th style="width:10%;">Absolute % Cover</th> <th style="width:10%;">Dominant Species?</th> <th style="width:10%;">Indicator Status</th> </tr> </thead> <tbody> <tr><td>1. <u>Bromus inermis</u></td><td><u>50</u></td><td><u>Y</u></td><td><u>FACU</u></td></tr> <tr><td>2. <u>Phleum pratense</u></td><td><u>15</u></td><td><u>Y</u></td><td><u>FACU</u></td></tr> <tr><td>3. <u>Trifolium pratense</u></td><td><u>15</u></td><td><u>Y</u></td><td><u>FACU</u></td></tr> <tr><td>4. <u>Melilotus officinalis</u></td><td><u>10</u></td><td><u>N</u></td><td><u>FACU</u></td></tr> <tr><td>5. <u>Plantago major</u></td><td><u>5</u></td><td><u>N</u></td><td><u>FAC</u></td></tr> <tr><td>6. <u>Ambrosia artemisiifolia</u></td><td><u>5</u></td><td><u>N</u></td><td><u>FACU</u></td></tr> <tr><td>7. <u> </u></td><td><u> </u></td><td><u> </u></td><td><u> </u></td></tr> <tr><td>8. <u> </u></td><td><u> </u></td><td><u> </u></td><td><u> </u></td></tr> <tr><td>9. <u> </u></td><td><u> </u></td><td><u> </u></td><td><u> </u></td></tr> <tr><td>10. <u> </u></td><td><u> </u></td><td><u> </u></td><td><u> </u></td></tr> <tr><td colspan="4" style="text-align: right;"><u>100</u> =Total Cover</td></tr> </tbody> </table> <p><u>Woody Vine Stratum:</u> (Plot size: <u>30</u>)</p> <table style="width:100%; border-collapse: collapse;"> <thead> <tr> <th style="width:30%;"></th> <th style="width:10%;">Absolute % Cover</th> <th style="width:10%;">Dominant Species?</th> <th style="width:10%;">Indicator Status</th> </tr> </thead> <tbody> <tr><td>1. <u> </u></td><td><u> </u></td><td><u> </u></td><td><u> </u></td></tr> <tr><td>2. <u> </u></td><td><u> </u></td><td><u> </u></td><td><u> </u></td></tr> <tr><td colspan="4" style="text-align: right;"><u>0</u> =Total Cover</td></tr> </tbody> </table>		Absolute % Cover	Dominant Species?	Indicator Status	1. <u> </u>	<u> </u>	<u> </u>	<u> </u>	2. <u> </u>	<u> </u>	<u> </u>	<u> </u>	3. <u> </u>	<u> </u>	<u> </u>	<u> </u>	4. <u> </u>	<u> </u>	<u> </u>	<u> </u>	5. <u> </u>	<u> </u>	<u> </u>	<u> </u>	<u>0</u> =Total Cover					Absolute % Cover	Dominant Species?	Indicator Status	1. <u> </u>	<u> </u>	<u> </u>	<u> </u>	2. <u> </u>	<u> </u>	<u> </u>	<u> </u>	3. <u> </u>	<u> </u>	<u> </u>	<u> </u>	4. <u> </u>	<u> </u>	<u> </u>	<u> </u>	5. <u> </u>	<u> </u>	<u> </u>	<u> </u>	<u>0</u> =Total Cover					Absolute % Cover	Dominant Species?	Indicator Status	1. <u>Bromus inermis</u>	<u>50</u>	<u>Y</u>	<u>FACU</u>	2. <u>Phleum pratense</u>	<u>15</u>	<u>Y</u>	<u>FACU</u>	3. <u>Trifolium pratense</u>	<u>15</u>	<u>Y</u>	<u>FACU</u>	4. <u>Melilotus officinalis</u>	<u>10</u>	<u>N</u>	<u>FACU</u>	5. <u>Plantago major</u>	<u>5</u>	<u>N</u>	<u>FAC</u>	6. <u>Ambrosia artemisiifolia</u>	<u>5</u>	<u>N</u>	<u>FACU</u>	7. <u> </u>	<u> </u>	<u> </u>	<u> </u>	8. <u> </u>	<u> </u>	<u> </u>	<u> </u>	9. <u> </u>	<u> </u>	<u> </u>	<u> </u>	10. <u> </u>	<u> </u>	<u> </u>	<u> </u>	<u>100</u> =Total Cover					Absolute % Cover	Dominant Species?	Indicator Status	1. <u> </u>	<u> </u>	<u> </u>	<u> </u>	2. <u> </u>	<u> </u>	<u> </u>	<u> </u>	<u>0</u> =Total Cover				<p>Dominance Test worksheet:</p> <p>Number of Dominant Species That Are OBL, FACW, or FAC: <u> 0 </u> (A)</p> <p>Total Number of Dominant Species Across All Strata: <u> 3 </u> (B)</p> <p>Percent of Domant Species That Are OBL, FACW, or FAC: <u> 0 </u> (A/B)</p> <p>Prevalence Index worksheet:</p> <table style="width:100%; border-collapse: collapse;"> <thead> <tr> <th style="width:40%;"></th> <th style="width:10%;">Total % Cover of:</th> <th style="width:10%;"></th> <th style="width:10%;">Multiply by:</th> <th style="width:10%;"></th> <th style="width:10%;"></th> </tr> </thead> <tbody> <tr><td>OBL species</td><td><u> 0 </u></td><td>x 1 =</td><td><u> 0 </u></td><td></td><td></td></tr> <tr><td>FACW species</td><td><u> 0 </u></td><td>x 2 =</td><td><u> 0 </u></td><td></td><td></td></tr> <tr><td>FAC species</td><td><u> 5 </u></td><td>x 3 =</td><td><u> 15 </u></td><td></td><td></td></tr> <tr><td>FACU species</td><td><u> 95 </u></td><td>x 4 =</td><td><u>380 </u></td><td></td><td></td></tr> <tr><td>UPL species</td><td><u> 0 </u></td><td>x 5 =</td><td><u> 0 </u></td><td></td><td></td></tr> <tr><td>Column Totals:</td><td><u>100</u></td><td>(A)</td><td><u>395</u></td><td>(B)</td><td></td></tr> <tr><td colspan="6">Prevalence Index = B/A= <u> 3.95 </u></td></tr> </tbody> </table> <p>Hydrophytic Vegetation Indicators:</p> <p><u> </u> 1 - Rapid test for Hydrophytic Vegetation</p> <p><u> </u> 2 - Dominance Test is >50%</p> <p><u> </u> 3 - Prevalence Index is ≤3.0¹</p> <p><u> </u> 4 - Morphological Adaptations¹ (Profice supporting data in Remarks or on a separate sheet)</p> <p><u> </u> Problematic Hydrophytic Vegetation¹ (Explain)</p> <p>¹Indicators of hydric soil and wetland hydrology must be present, unless disturbed or problematic.</p> <p>Hydrophytic Vegetation Present? Yes <u> </u> No <u> X </u></p>		Total % Cover of:		Multiply by:			OBL species	<u> 0 </u>	x 1 =	<u> 0 </u>			FACW species	<u> 0 </u>	x 2 =	<u> 0 </u>			FAC species	<u> 5 </u>	x 3 =	<u> 15 </u>			FACU species	<u> 95 </u>	x 4 =	<u>380 </u>			UPL species	<u> 0 </u>	x 5 =	<u> 0 </u>			Column Totals:	<u>100</u>	(A)	<u>395</u>	(B)		Prevalence Index = B/A= <u> 3.95 </u>					
	Absolute % Cover	Dominant Species?	Indicator Status																																																																																																																																																																						
1. <u> </u>	<u> </u>	<u> </u>	<u> </u>																																																																																																																																																																						
2. <u> </u>	<u> </u>	<u> </u>	<u> </u>																																																																																																																																																																						
3. <u> </u>	<u> </u>	<u> </u>	<u> </u>																																																																																																																																																																						
4. <u> </u>	<u> </u>	<u> </u>	<u> </u>																																																																																																																																																																						
5. <u> </u>	<u> </u>	<u> </u>	<u> </u>																																																																																																																																																																						
<u>0</u> =Total Cover																																																																																																																																																																									
	Absolute % Cover	Dominant Species?	Indicator Status																																																																																																																																																																						
1. <u> </u>	<u> </u>	<u> </u>	<u> </u>																																																																																																																																																																						
2. <u> </u>	<u> </u>	<u> </u>	<u> </u>																																																																																																																																																																						
3. <u> </u>	<u> </u>	<u> </u>	<u> </u>																																																																																																																																																																						
4. <u> </u>	<u> </u>	<u> </u>	<u> </u>																																																																																																																																																																						
5. <u> </u>	<u> </u>	<u> </u>	<u> </u>																																																																																																																																																																						
<u>0</u> =Total Cover																																																																																																																																																																									
	Absolute % Cover	Dominant Species?	Indicator Status																																																																																																																																																																						
1. <u>Bromus inermis</u>	<u>50</u>	<u>Y</u>	<u>FACU</u>																																																																																																																																																																						
2. <u>Phleum pratense</u>	<u>15</u>	<u>Y</u>	<u>FACU</u>																																																																																																																																																																						
3. <u>Trifolium pratense</u>	<u>15</u>	<u>Y</u>	<u>FACU</u>																																																																																																																																																																						
4. <u>Melilotus officinalis</u>	<u>10</u>	<u>N</u>	<u>FACU</u>																																																																																																																																																																						
5. <u>Plantago major</u>	<u>5</u>	<u>N</u>	<u>FAC</u>																																																																																																																																																																						
6. <u>Ambrosia artemisiifolia</u>	<u>5</u>	<u>N</u>	<u>FACU</u>																																																																																																																																																																						
7. <u> </u>	<u> </u>	<u> </u>	<u> </u>																																																																																																																																																																						
8. <u> </u>	<u> </u>	<u> </u>	<u> </u>																																																																																																																																																																						
9. <u> </u>	<u> </u>	<u> </u>	<u> </u>																																																																																																																																																																						
10. <u> </u>	<u> </u>	<u> </u>	<u> </u>																																																																																																																																																																						
<u>100</u> =Total Cover																																																																																																																																																																									
	Absolute % Cover	Dominant Species?	Indicator Status																																																																																																																																																																						
1. <u> </u>	<u> </u>	<u> </u>	<u> </u>																																																																																																																																																																						
2. <u> </u>	<u> </u>	<u> </u>	<u> </u>																																																																																																																																																																						
<u>0</u> =Total Cover																																																																																																																																																																									
	Total % Cover of:		Multiply by:																																																																																																																																																																						
OBL species	<u> 0 </u>	x 1 =	<u> 0 </u>																																																																																																																																																																						
FACW species	<u> 0 </u>	x 2 =	<u> 0 </u>																																																																																																																																																																						
FAC species	<u> 5 </u>	x 3 =	<u> 15 </u>																																																																																																																																																																						
FACU species	<u> 95 </u>	x 4 =	<u>380 </u>																																																																																																																																																																						
UPL species	<u> 0 </u>	x 5 =	<u> 0 </u>																																																																																																																																																																						
Column Totals:	<u>100</u>	(A)	<u>395</u>	(B)																																																																																																																																																																					
Prevalence Index = B/A= <u> 3.95 </u>																																																																																																																																																																									
Remarks: (Include photo numbers here or on a separate sheet.) <u>Weedy field</u>																																																																																																																																																																									

SOIL

Sampling Point: WET_002_U

Profile Description: (Describe to the depth needed to document the indicator or confirm the absence of indicators.)

Depth (inches)	Matrix		Redox Features				Texture	Remarks
	Color (moist)	%	Color (moist)	%	Type ¹	Loc ²		
0-10	10YR 3/3	100		0			Silty Clay Loam	
10-15	10YR 2/2	100		0			Silty Clay Loam	
15-24	10YR 2/1	100		0			Sandy Clay Loam	

¹Type: C=Concentration, D=Depletion, RM=Reduced Matrix, MS=Masked Sand Grains. ²Location: PL=Pore Lining, M=Matrix.

Hydric Soil Indicators:		Indicators for Problematic Hydric Soils³:	
<input type="checkbox"/> Histosol (A1)	<input type="checkbox"/> Sandy Gleyed Matrix (S4)	<input type="checkbox"/> Coast Prairie Redox (A16)	
<input type="checkbox"/> Histic Epipedon (A2)	<input type="checkbox"/> Sandy Redox (S5)	<input type="checkbox"/> Dark Surface (S7)	
<input type="checkbox"/> Black Histic (A3)	<input type="checkbox"/> Stripped Matrix (S6)	<input type="checkbox"/> Iron-Manganese Masses (F12)	
<input type="checkbox"/> Hydrogen Sulfide (A4)	<input type="checkbox"/> Loamy Mucky Mineral (F1)	<input type="checkbox"/> Very Shallow Dark Surface (TF12)	
<input type="checkbox"/> Stratified Layers (A5)	<input type="checkbox"/> Loamy Gleyed Matrix (F2)	<input type="checkbox"/> Other (Explain in Remarks)	
<input type="checkbox"/> 2 cm Muck (A10)	<input type="checkbox"/> Depleted Matrix (F3)		
<input type="checkbox"/> Depleted Below Dark Surface (A11)	<input type="checkbox"/> Redox Dark Surface (F6)		
<input type="checkbox"/> Thick Dark Surface (A12)	<input type="checkbox"/> Depleted Dark Surface (F7)		
<input type="checkbox"/> Sandy Mucky Mineral (S1)	<input type="checkbox"/> Redox Depressions (F8)		
<input type="checkbox"/> 5 cm Mucky Peat or Peat (S3)			

³Indicators of hydrophytic vegetation and wetland hydrology must be present, unless disturbed or problematic.

Restrictive Layer (if observed):	Hydric Soil Present?	Yes <input type="checkbox"/>	No <input checked="" type="checkbox"/>
Type: _____			
Depth (inches): _____			

Remarks:

HYDROLOGY

Wetland Hydrology Indicators:	
<u>Primary indicators (minimum of one required: check all that apply)</u>	<u>Secondary indicators (minimum of two required)</u>
<input type="checkbox"/> Surface Water (A1)	<input type="checkbox"/> Water-Stained Leaves (B9)
<input type="checkbox"/> High Water Table (A2)	<input type="checkbox"/> Aquatic Fauna (B13)
<input type="checkbox"/> Saturation (A3)	<input type="checkbox"/> True Aquatic Plants (B14)
<input type="checkbox"/> Water Marks (B1)	<input type="checkbox"/> Hydrogen Sulfide Odor (C1)
<input type="checkbox"/> Sediment Deposits (B2)	<input type="checkbox"/> Oxidized Rhizospheres on Living Roots (C3)
<input type="checkbox"/> Drift Deposits (B3)	<input type="checkbox"/> Presence of Reduced Iron (C4)
<input type="checkbox"/> Algal Mat or Crust (B4)	<input type="checkbox"/> Recent Iron Reduction in Tilled Soils (C6)
<input type="checkbox"/> Iron Deposits (B5)	<input type="checkbox"/> Thin Muck Surface (C7)
<input type="checkbox"/> Inundation Visible on Aerial Imagery (B7)	<input type="checkbox"/> Gauge or Well Data (D9)
<input type="checkbox"/> Sparsely Vegetated Concave Surface (B8)	<input type="checkbox"/> Other (Explain in Remarks)
<input type="checkbox"/> Surface Soil Cracks (B6)	
<input type="checkbox"/> Drainage Patterns (B10)	
<input type="checkbox"/> Dry-Season Water Table (C2)	
<input type="checkbox"/> Crayfish Burrows (C8)	
<input type="checkbox"/> Saturation Visible on Aerial Imagery (C9)	
<input type="checkbox"/> Stunted or Stressed Plants (D1)	
<input type="checkbox"/> Geomorphic Position (D2)	
<input type="checkbox"/> FAC-Neutral Test (D5)	

Field Observations:	Wetland Hydrology Present?	Yes <input type="checkbox"/>	No <input checked="" type="checkbox"/>
Surface Water Present? Yes <input type="checkbox"/> No <input checked="" type="checkbox"/> Depth (inches): _____			
Water Table Present? Yes <input type="checkbox"/> No <input checked="" type="checkbox"/> Depth (inches): _____			
Saturation Present? Yes <input type="checkbox"/> No <input checked="" type="checkbox"/> Depth (inches): _____ (includes capillary fringe)			

Describe Recorded Data (stream gauge, monitoring well, aerial photos, previous inspections), if available: None observed

Remarks:

WETLAND DETERMINATION DATA FORM — Midwest Region

Project/Site: Crowned Ridge BESS 1 City/County: Codington Sampling Date: 07/30/2025

Applicant/Owner: NextEra State: SD Sampling Point: WET_002_W

Investigator(s): Sarah Rosche/ Section, Township, Range: Sec. 11 T118N R51W

Landform (hillslope, terrace, etc.): Depression Local relief (concave, convex, none): Concave

Slope (%): <5% Lat: 45.046117 Long: -96.9224555 Datum: WGS84

Soil Map Unit Name: Z142B - Barnes-Buse-Svea loams, 1 to 6 percent slopes NWI classification: No

Are climatic / hydrologic conditions on the site typical for this time of year? Yes No (If no, explain in Remarks.)

Are Vegetation , Soil , or Hydrology significantly disturbed? Are "Normal Circumstances" present? Yes No

Are Vegetation , Soil , or Hydrology naturally problematic? (If needed, explain any answers in Remarks.)

SUMMARY OF FINDINGS — Attach site map showing sampling point locations, transects, important features, etc.

Hydrophytic Vegetation Present?	Yes: <input checked="" type="checkbox"/>	No: <input type="checkbox"/>	Is the Sampled Area within a Wetland? Yes <input checked="" type="checkbox"/> No <input type="checkbox"/>
Hydric Soil Present?	Yes: <input checked="" type="checkbox"/>	No: <input type="checkbox"/>	
Wetland Hydrology Present?	Yes: <input checked="" type="checkbox"/>	No: <input type="checkbox"/>	

Remarks: wetter than normal conditions

VEGETATION - Use scientific names of plants.

	Absolute % Cover	Dominant Species?	Indicator Status																																									
Tree Stratum: (Plot size: <u>30</u>)																																												
1. _____	_____	_____	_____	Dominance Test worksheet: Number of Dominant Species That Are OBL, FACW, or FAC: <u>2</u> (A) Total Number of Dominant Species Across All Strata: <u>2</u> (B) Percent of Domant Species That Are OBL, FACW, or FAC: <u>100</u> (A/B)																																								
2. _____	_____	_____	_____																																									
3. _____	_____	_____	_____																																									
4. _____	_____	_____	_____																																									
5. _____	_____	_____	_____																																									
	<u>0</u>	=Total Cover																																										
Sapling/Shrub Stratum: (Plot size: <u>15</u>)																																												
1. _____	_____	_____	_____	Prevalence Index worksheet: <table style="width: 100%; border-collapse: collapse;"> <thead> <tr> <th style="width: 40%;">Total % Cover of:</th> <th style="width: 10%;"></th> <th style="width: 10%;">Multiply by:</th> <th style="width: 10%;"></th> <th style="width: 10%;"></th> </tr> </thead> <tbody> <tr> <td>OBL species</td> <td style="text-align: center;"><u>5</u></td> <td>x 1 =</td> <td style="text-align: center;"><u>5</u></td> <td></td> </tr> <tr> <td>FACW species</td> <td style="text-align: center;"><u>65</u></td> <td>x 2 =</td> <td style="text-align: center;"><u>130</u></td> <td></td> </tr> <tr> <td>FAC species</td> <td style="text-align: center;"><u>20</u></td> <td>x 3 =</td> <td style="text-align: center;"><u>60</u></td> <td></td> </tr> <tr> <td>FACU species</td> <td style="text-align: center;"><u>0</u></td> <td>x 4 =</td> <td style="text-align: center;"><u>0</u></td> <td></td> </tr> <tr> <td>UPL species</td> <td style="text-align: center;"><u>0</u></td> <td>x 5 =</td> <td style="text-align: center;"><u>0</u></td> <td></td> </tr> <tr> <td>Column Totals:</td> <td style="text-align: center;"><u>90</u></td> <td>(A)</td> <td style="text-align: center;"><u>195</u></td> <td>(B)</td> </tr> <tr> <td colspan="5" style="text-align: center;">Prevalence Index = B/A = <u>2.17</u></td> </tr> </tbody> </table>	Total % Cover of:		Multiply by:			OBL species	<u>5</u>	x 1 =	<u>5</u>		FACW species	<u>65</u>	x 2 =	<u>130</u>		FAC species	<u>20</u>	x 3 =	<u>60</u>		FACU species	<u>0</u>	x 4 =	<u>0</u>		UPL species	<u>0</u>	x 5 =	<u>0</u>		Column Totals:	<u>90</u>	(A)	<u>195</u>	(B)	Prevalence Index = B/A = <u>2.17</u>				
Total % Cover of:		Multiply by:																																										
OBL species	<u>5</u>	x 1 =	<u>5</u>																																									
FACW species	<u>65</u>	x 2 =	<u>130</u>																																									
FAC species	<u>20</u>	x 3 =	<u>60</u>																																									
FACU species	<u>0</u>	x 4 =	<u>0</u>																																									
UPL species	<u>0</u>	x 5 =	<u>0</u>																																									
Column Totals:	<u>90</u>	(A)	<u>195</u>	(B)																																								
Prevalence Index = B/A = <u>2.17</u>																																												
2. _____	_____	_____	_____																																									
3. _____	_____	_____	_____																																									
4. _____	_____	_____	_____																																									
5. _____	_____	_____	_____																																									
	<u>0</u>	=Total Cover																																										
Herb Stratum: (Plot size: <u>5</u>)																																												
1. <u>Agrostis gigantea</u>	<u>40</u>	<u>Y</u>	<u>FACW</u>	Hydrophytic Vegetation Indicators: <input type="checkbox"/> 1 - Rapid test for Hydrophytic Vegetation <input checked="" type="checkbox"/> 2 - Dominance Test is >50% <input checked="" type="checkbox"/> 3 - Prevalence Index is ≤3.0 ¹ <input type="checkbox"/> 4 - Morphological Adaptations ¹ (Profice supporting data in Remarks or on a separate sheet) <input type="checkbox"/> Problematic Hydrophytic Vegetation ¹ (Explain) ¹ Indicators of hydric soil and wetland hydrology must be present, unless disturbed or problematic.																																								
2. <u>Hordeum jubatum</u>	<u>20</u>	<u>Y</u>	<u>FAC</u>																																									
3. <u>Phalaris arundinacea</u>	<u>10</u>	<u>N</u>	<u>FACW</u>																																									
4. <u>Persicaria maculosa</u>	<u>10</u>	<u>N</u>	<u>FACW</u>																																									
5. <u>Eleocharis palustris</u>	<u>5</u>	<u>N</u>	<u>OBL</u>																																									
6. <u>Veronica peregrina</u>	<u>5</u>	<u>N</u>	<u>FACW</u>																																									
7. _____	_____	_____	_____																																									
8. _____	_____	_____	_____																																									
9. _____	_____	_____	_____																																									
10. _____	_____	_____	_____																																									
	<u>90</u>	=Total Cover																																										
Woody Vine Stratum: (Plot size: <u>30</u>)																																												
1. _____	_____	_____	_____	Hydrophytic Vegetation Present? Yes <input checked="" type="checkbox"/> No <input type="checkbox"/>																																								
2. _____	_____	_____	_____																																									
	<u>0</u>	=Total Cover																																										

Remarks: (Include photo numbers here or on a separate sheet.)

SOIL

Sampling Point: WET_002_W

Profile Description: (Describe to the depth needed to document the indicator or confirm the absence of indicators.)

Depth (inches)	Matrix		Redox Features				Texture	Remarks
	Color (moist)	%	Color (moist)	%	Type ¹	Loc ²		
0-20	10YR 2/1	100		0			Silty Clay Loam	
20-26	10YR 4/2	97	10YR 4/6	3	C	M	Silty Clay Loam	

¹Type: C=Concentration, D=Depletion, RM=Reduced Matrix, MS=Masked Sand Grains. ²Location: PL=Pore Lining, M=Matrix.

Hydric Soil Indicators:		Indicators for Problematic Hydric Soils³:	
<input type="checkbox"/> Histosol (A1)	<input type="checkbox"/> Sandy Gleyed Matrix (S4)	<input type="checkbox"/> Coast Prairie Redox (A16)	
<input type="checkbox"/> Histic Epipedon (A2)	<input type="checkbox"/> Sandy Redox (S5)	<input type="checkbox"/> Dark Surface (S7)	
<input type="checkbox"/> Black Histic (A3)	<input type="checkbox"/> Stripped Matrix (S6)	<input type="checkbox"/> Iron-Manganese Masses (F12)	
<input type="checkbox"/> Hydrogen Sulfide (A4)	<input type="checkbox"/> Loamy Mucky Mineral (F1)	<input type="checkbox"/> Very Shallow Dark Surface (TF12)	
<input type="checkbox"/> Stratified Layers (A5)	<input type="checkbox"/> Loamy Gleyed Matrix (F2)	<input type="checkbox"/> Other (Explain in Remarks)	
<input type="checkbox"/> 2 cm Muck (A10)	<input type="checkbox"/> Depleted Matrix (F3)		
<input type="checkbox"/> Depleted Below Dark Surface (A11)	<input type="checkbox"/> Redox Dark Surface (F6)		
<input checked="" type="checkbox"/> Thick Dark Surface (A12)	<input type="checkbox"/> Depleted Dark Surface (F7)		
<input type="checkbox"/> Sandy Mucky Mineral (S1)	<input type="checkbox"/> Redox Depressions (F8)		
<input type="checkbox"/> 5 cm Mucky Peat or Peat (S3)			

³Indicators of hydrophytic vegetation and wetland hydrology must be present, unless disturbed or problematic.

Restrictive Layer (if observed): Type: <u>gravel</u> Depth (inches): <u>20</u>	Hydric Soil Present? Yes <input checked="" type="checkbox"/> No <input type="checkbox"/>
---	---

Remarks:

HYDROLOGY

Wetland Hydrology Indicators:	
<u>Primary indicators (minimum of one required: check all that apply)</u>	<u>Secondary indicators (minimum of two required)</u>
<input checked="" type="checkbox"/> Surface Water (A1)	<input type="checkbox"/> Water-Stained Leaves (B9)
<input checked="" type="checkbox"/> High Water Table (A2)	<input type="checkbox"/> Aquatic Fauna (B13)
<input checked="" type="checkbox"/> Saturation (A3)	<input type="checkbox"/> True Aquatic Plants (B14)
<input type="checkbox"/> Water Marks (B1)	<input type="checkbox"/> Hydrogen Sulfide Odor (C1)
<input type="checkbox"/> Sediment Deposits (B2)	<input type="checkbox"/> Oxidized Rhizospheres on Living Roots (C3)
<input type="checkbox"/> Drift Deposits (B3)	<input type="checkbox"/> Presence of Reduced Iron (C4)
<input type="checkbox"/> Algal Mat or Crust (B4)	<input type="checkbox"/> Recent Iron Reduction in Tilled Soils (C6)
<input type="checkbox"/> Iron Deposits (B5)	<input type="checkbox"/> Thin Muck Surface (C7)
<input type="checkbox"/> Inundation Visible on Aerial Imagery (B7)	<input type="checkbox"/> Gauge or Well Data (D9)
<input type="checkbox"/> Sparsely Vegetated Concave Surface (B8)	<input type="checkbox"/> Other (Explain in Remarks)
<input type="checkbox"/> Surface Soil Cracks (B6)	
<input type="checkbox"/> Drainage Patterns (B10)	
<input type="checkbox"/> Dry-Season Water Table (C2)	
<input type="checkbox"/> Crayfish Burrows (C8)	
<input type="checkbox"/> Saturation Visible on Aerial Imagery (C9)	
<input type="checkbox"/> Stunted or Stressed Plants (D1)	
<input checked="" type="checkbox"/> Geomorphic Position (D2)	
<input checked="" type="checkbox"/> FAC-Neutral Test (D5)	

Field Observations: Surface Water Present? Yes <input checked="" type="checkbox"/> No <input type="checkbox"/> Depth (inches): <u>1</u> Water Table Present? Yes <input checked="" type="checkbox"/> No <input type="checkbox"/> Depth (inches): <u>10</u> Saturation Present? Yes <input checked="" type="checkbox"/> No <input type="checkbox"/> Depth (inches): <u>6</u> (includes capillary fringe)	Wetland Hydrology Present? Yes <input checked="" type="checkbox"/> No <input type="checkbox"/>
---	---

Describe Recorded Data (stream gauge, monitoring well, aerial photos, previous inspections), if available:

Remarks: