

Northern States Power Company, doing business as Xcel Energy Information Request

Docket No.: EL25-032
 South Dakota Knife River
 Requestor: Xcel Energy
 Requested From: Sioux Valley Energy
 Analyst: Steve Kolbeck
 Date of Request: March 10, 2026 Data Request No. 1-1
 Response Due: March 24, 2026

Question:

Ted Smith states in his rebuttal testimony that Knife River will need “to install approximately 9,400 feet (1.8 miles) of medium voltage distribution line.” Provide all facts that support, were relied upon, or assumed for this testimony.

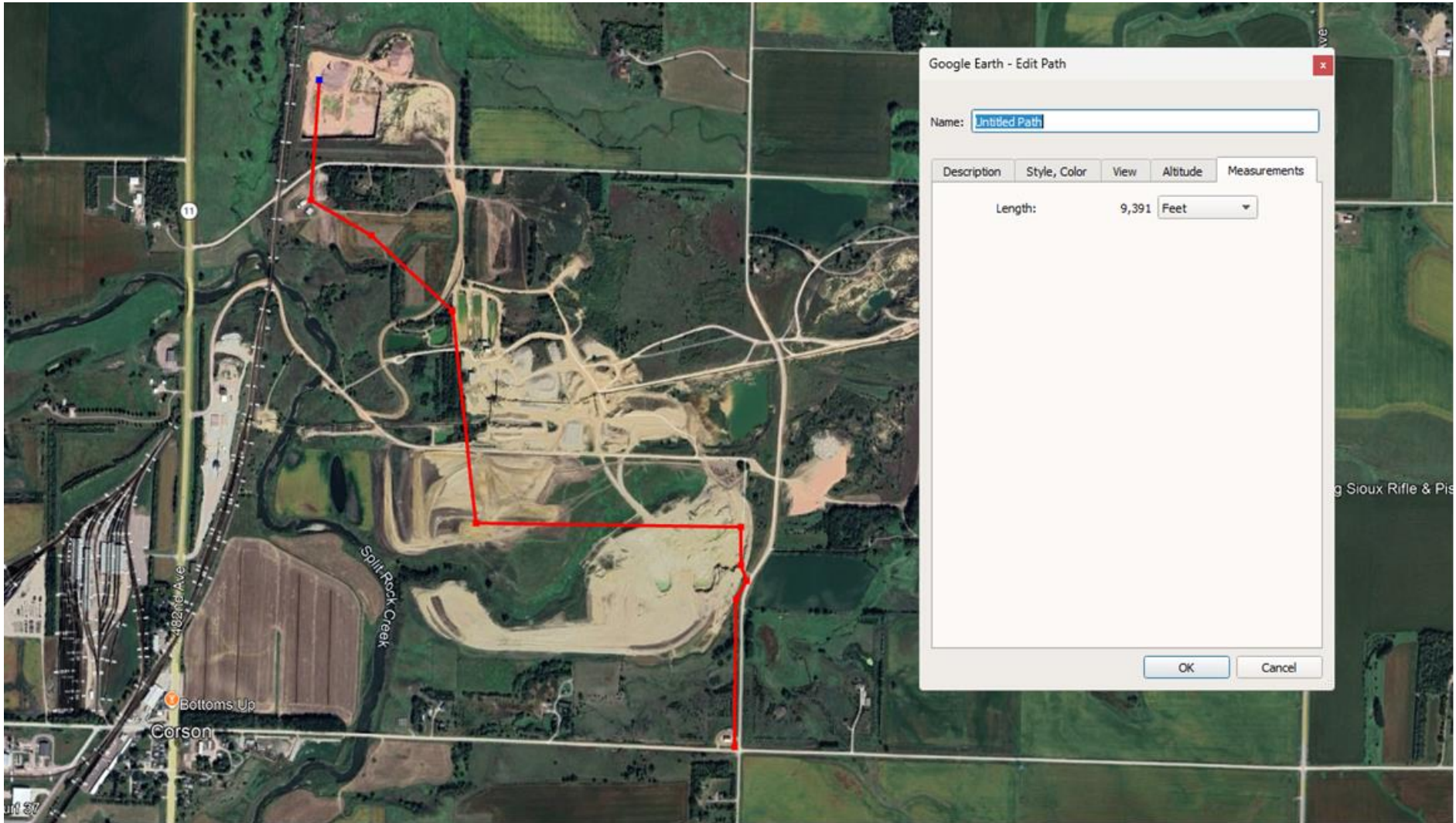
Response:

During the service process with Sioux Valley Energy, Knife River provided a proposed site CAD file depicting conveyor and motor locations along with a table of data listing seven different service points. Sioux Valley determined the length of 9,400 feet based on examination of aerial imagery assuming Knife River would be taking service in the southeast corner of their property from Xcel, which is close to one of Xcel’s existing transmission lines. The route identified by Sioux Valley involves installing distribution facilities along the same path as the conveyor and motor facilities outlined by Knife River. A screenshot depicting the assumed route and length of the route are shown in an attached image.

KNIFE RIVER

24033 CORSON AGGREGATE PLANT PROJECT
Preliminary Load Values

Nameplate	HP	FLA	Calc KVA	Load Factor	Adjusted KVA	Service Description	Service To:	Notes
EH101 480V	1175	1769	1,468.98	70.00%	1,028.28	Service Point-1, 480/277, 3PH, 4W	Service to 2500A/2500A MSB	PAD-MOUNT XFMR
EH101 4160V	1000	133	957.17	70.00%	670.02	Service Point-1, 4160V, 3PH, 4W	Service to CR101 Soft Start	PAD-MOUNT XFMR
EH102 480V	500	710	589.58	70.00%	412.71	Service Point-2, 480/277, 3PH, 4W	Service to 1200A/1200A MSB	PAD-MOUNT XFMR
EH201 480V	810	1086	901.81	70.00%	631.27	Service Point-3, 480/277, 3PH, 4W	Service to 2000A/2000A MSB	PAD-MOUNT XFMR
EH202 480V	1192	1668	1,385.11	70.00%	969.58	Service Point-4, 480/277, 3PH, 4W	Service to 2500A/2500A MSB	PAD-MOUNT XFMR
EH203 480V	656	1329	1,103.60	70.00%	772.52	Service Point-5, 480/277, 3PH, 4W	Service to 2000A/2000A MSB	PAD-MOUNT XFMR
EH203 4160V	2040	271.5	1,953.93	70.00%	1,367.75	Service Point-5, 4160V, 3PH, 4W	Service to 4160V 1000A Switch	PAD-MOUNT XFMR
EH204 480V	2774	3671	3,048.40	70.00%	2,133.88	Service Point-6, 480/277, 3PH, 4W	Service to 4000A/4000A MSB	PAD-MOUNT XFMR
EHPOND	400	600	498.24	70.00%	348.77	Service Point-7, 480/277, 3PH, 4W	Service to 1500A/1500A MSB	PAD-MOUNT XFMR
SUB-TOTAL	10547	11237.5	11,906.83		8,334.78			
Totals:	10,547.00	11,237.50	11,906.83		8,334.78			
TOTAL SITE, Amended KVA					8,334.78			
MVA					8.33			



Google Earth - Edit Path

Name:

Description Style, Color View Altitude Measurements

Length: 9,391 Feet

OK

Cancel

Preparer: Ted Smith
Title: V.P Engineering/Operations
Department: Engineering/Operations
Telephone: (605)534-3535
Date: March 24, 2026