

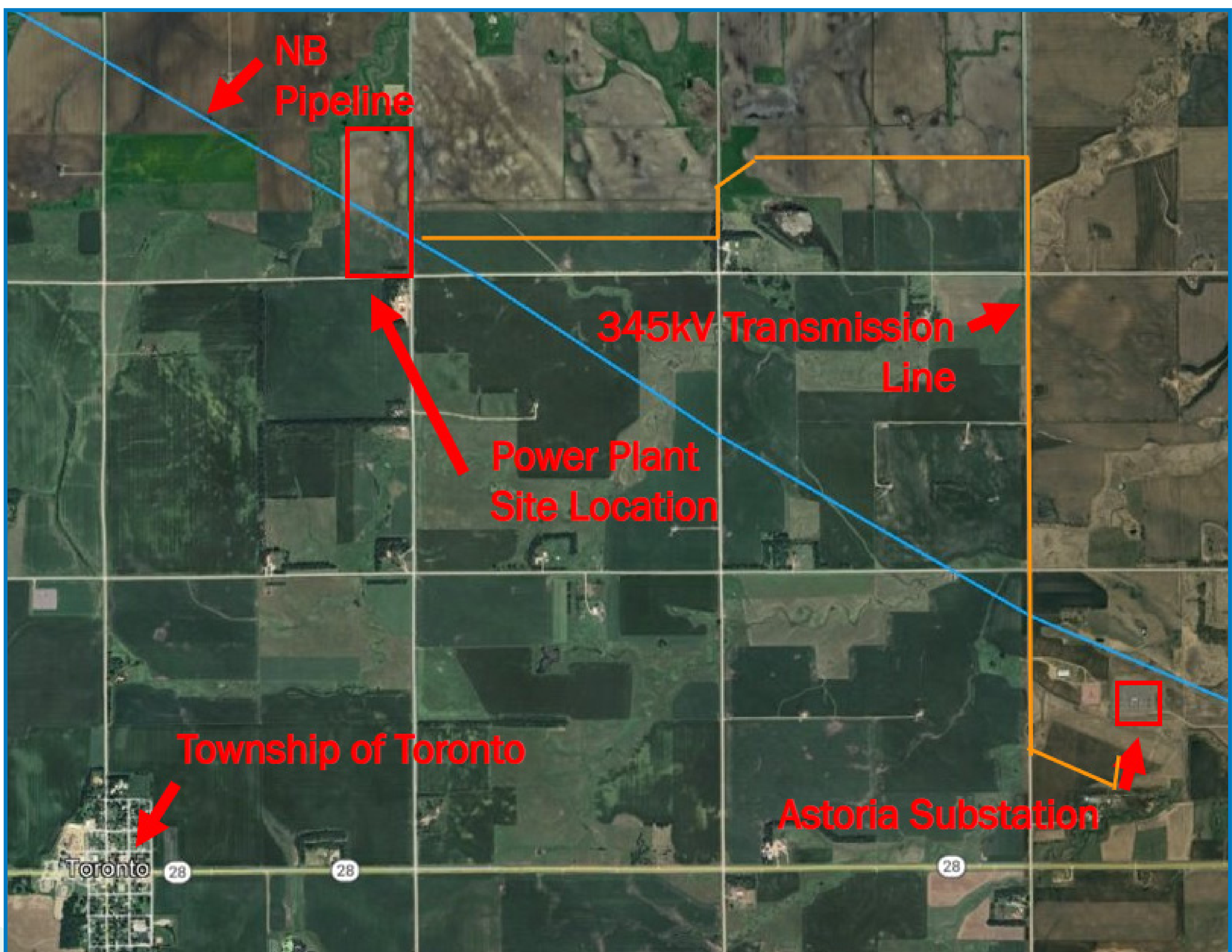
TORONTO POWER PLANT

TORONTO POWER PLANT RENDERINGS



TORONTO POWER PLANT

PROPOSED FACILITY LOCATION AND TRANSMISSION ROUTE



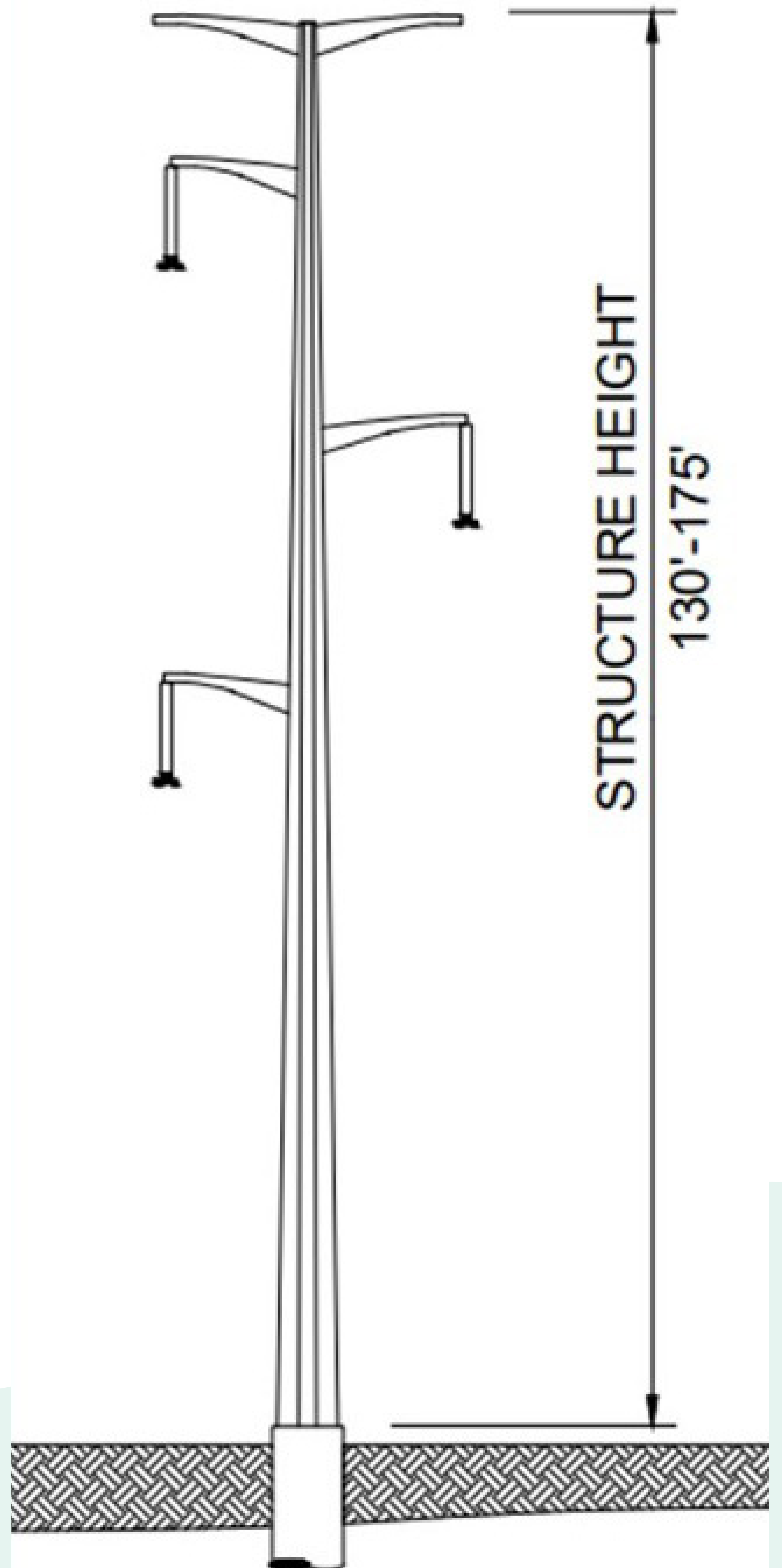
TORONTO POWER PLANT

TRANSMISSION STRUCTURE

A 4.9-mile 345-kV single circuit transmission line will be needed to connect the Toronto Power Plant to the nearby substation.

Typical 345 kV transmission structures:

- Steel monopole structure
- Approximately 130 – 175 feet tall
- Expected to require up to 30 poles with spacing varying with terrain, and up to 1,500 ft apart
- Easements based on 75 ft from pole centerline (150 ft total width)

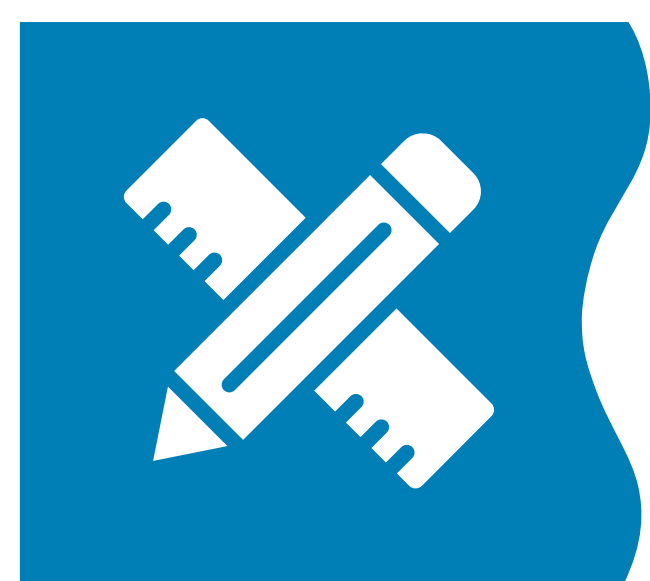


TORONTO POWER PLANT

ANTICIPATED PROJECT SCHEDULE



2024-2026
Permitting



2025-2026
Surveys and
Engineering Design



2026
Pre-Construction
Activities



2027-2029
Construction



2029
Power Plant
in Operation



TORONTO POWER PLANT

CONNECT WITH US



605.977.7775



connect@torontopowerplant.com



www.mrenergy.com

