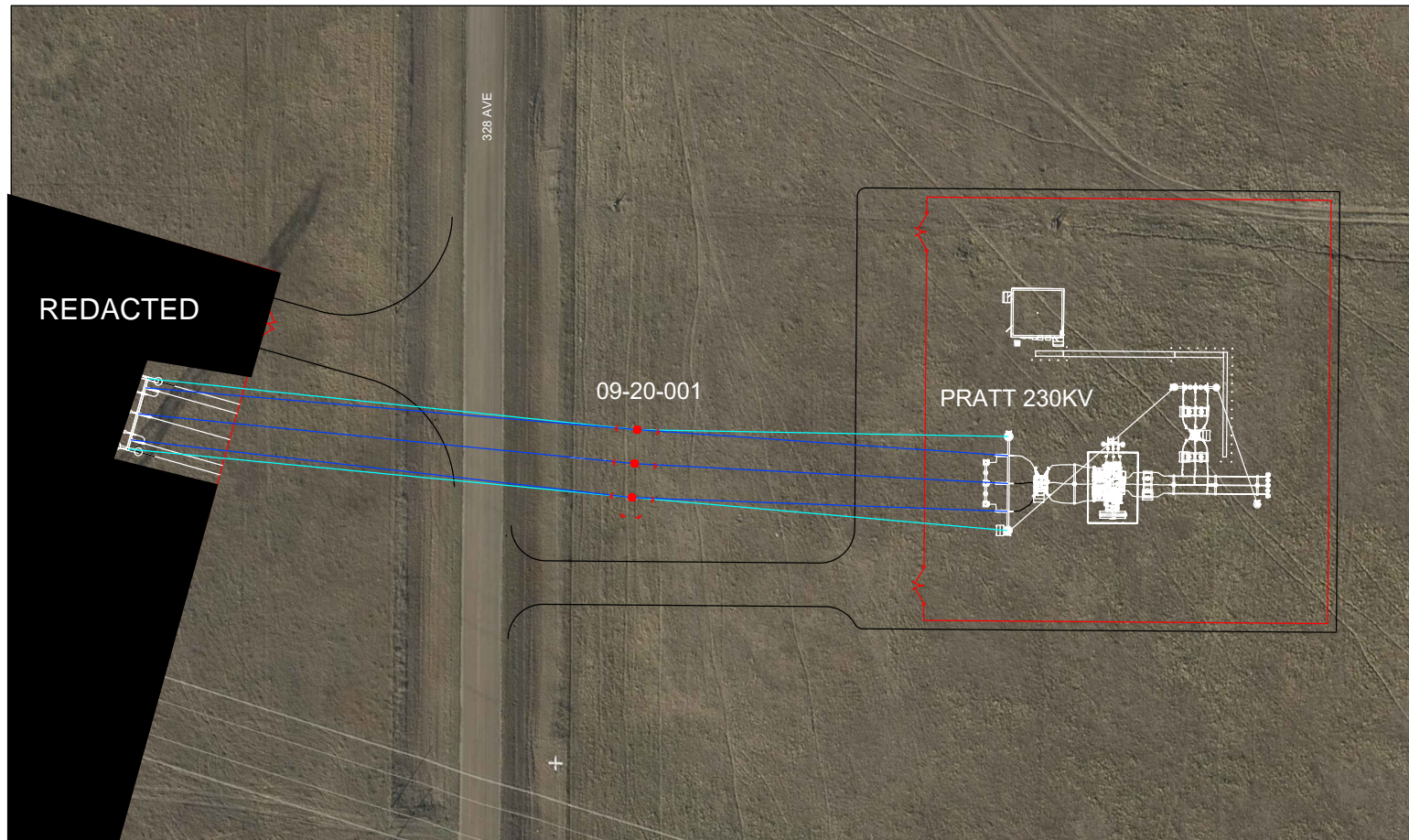
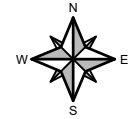


WAPA NORTH BEND TO PRATT 230KV TIE

SEC 09 TAP 20, WO# 2023187
HYDE COUNTY, SD

**DESIGN DATA**

CONDUCTOR: 795 ACSR HAWK 3500# DTHL
SHIELD WIRE: 3/8" 7-STRAND EHSS 1500# DTHL
BASIC STRUCTURE: TH-5BD-230
RULING SPAN: SLACK SPANS
POLE GROUND: TM-9
POLE CLASS: LAMINATED WOOD
TG-5A ON ALL DOWN GUYS
POLE LINE FOOTAGE: 502' OR 0.095 MILES
YEAR OF CONSTRUCTION OR AS BUILT: 2024/2025

