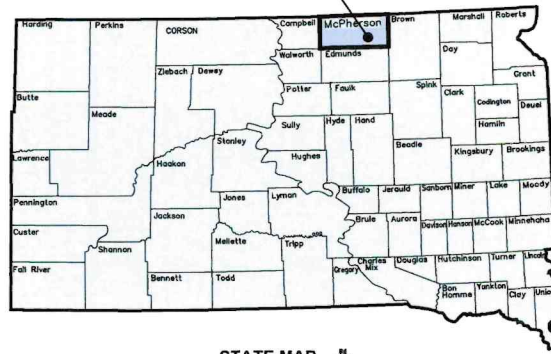


CONSTRUCTION PLANS FOR: LEOLA DATA CENTER SITE IMPROVEMENTS McPHERSON COUNTY, SOUTH DAKOTA A-10430

INDEX OF SHEETS

1. COVER SHEET
2. PLAN NOTES
3. PROVIDED TOPOGRAPHIC SURVEY
4. PROJECT LAYOUT AND EXISTING CONDITIONS
5. GRADING LAYOUT PLAN
6. CONTAINMENT LAYOUT
- 7.-8. STATUTORY ROAD PLAN AND PROFILE
9. UTILITY LAYOUT PLAN
- 10.-15. DETAILS
16. STORM WATER POLLUTION PREVENTION PLAN
- 17.-18. STORM WATER POLLUTION PREVENTION PLAN NOTES
- 19.-20. STORM WATER POLLUTION PREVENTION PLAN DETAILS

LEOLA
SOUTH DAKOTA



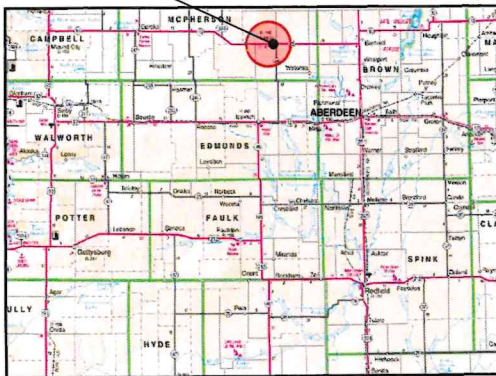
STATE MAP
NO SCALE

OWNER / DEVELOPER

LEOLA DATA CENTER, LLC
BILL CONNORS

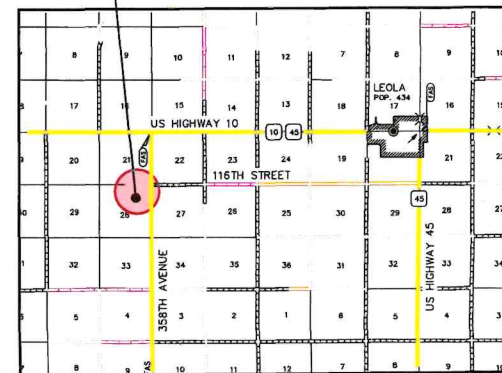
206-607-7444
BILL@LEOLADATACENTER.COM

LEOLA
SOUTH DAKOTA



LOCATION MAP
NO SCALE

NE1/4 OF SECTION 28-T126N-R68W 5TH P.M.,
McPHERSON COUNTY, SOUTH DAKOTA

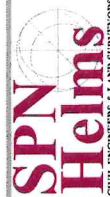


CITY OF ABERDEEN
VICINITY MAP
NO SCALE

Date: _____
By: _____

I hereby certify that this plan, specification, or report was prepared by me or under my direct supervision and that I am a duly registered Professional Engineer under the law of the State of South Dakota. Registration No. _____

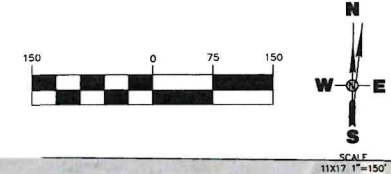
416 Production S.U.N.
Aberdeen, S.D. 57402
Phone: 605.225.1212
Fax: 605.225.2250
www.tabbles.com
Email: bob@tabbles.com



Cover Sheet
LEOLA DATA CENTER IMPROVEMENTS
LEOLA DATA CENTER, LLC
McPHERSON COUNTY, SOUTH DAKOTA

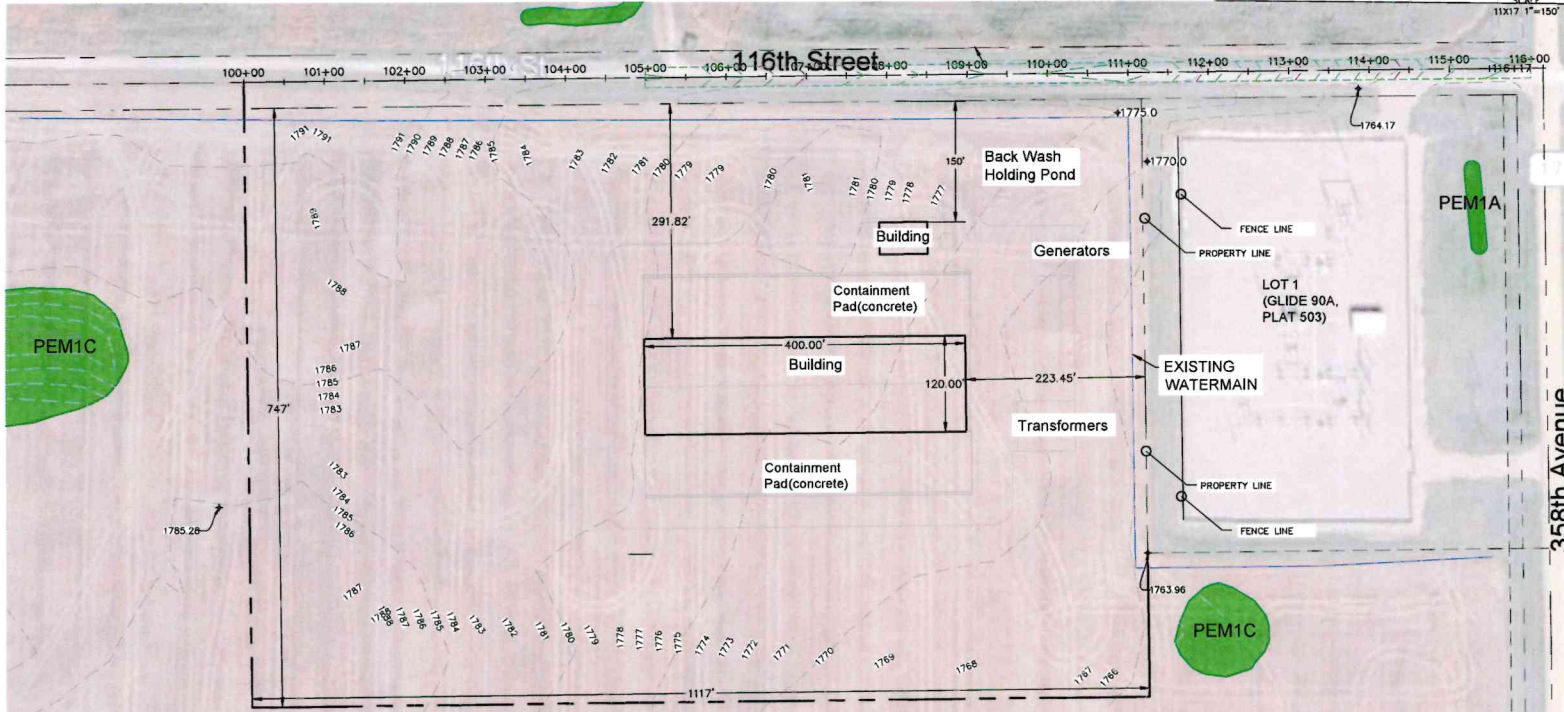
Drawn By: CLB
CHK By: BDS
Proj. No: A10430
Des. No: 10430 PNT-V2
VP. No: COV
Date: 6/17/26

NE1/4 OF SECTION 28-T126N-R68W 5TH P.M.,
McPHERSON COUNTY, SOUTH DAKOTA



LEGEND

- WOOD/PRIVACY FENCE
- CHAIN LINK FENCE
- X- BARBED WIRE FENCE
- STORM SEWER PIPE/CULVERT
- STORM SEWER MANHOLE
- STORM SEWER FLARED END
- STORM SEWER INLET
- SANITARY SEWER PIPE
- SANITARY SEWER MANHOLE
- SANITARY SEWER CLEANOUT
- WATERMAIN PIPE
- WATER VALVE
- FIRE HYDRANT
- CURB STOP
- YARD HYDRANT
- ▲ FLOOD LIGHT
- LIGHT POLE
- UTILITY POLE
- ELECTRICAL PEDESTAL
- OHE—OVERHEAD POWER
- UG—UNDERGROUND ELECTRICAL
- GAS VALVE
- UG—UNDERGROUND GAS LINE
- UG—UNDERGROUND TELEPHONE LINE
- UG—UNDERGROUND FIBER OPTIC LINE
- UG—UNDERGROUND CABLE TV LINE
- TELECOM PEDESTAL
- CABLE TV PEDESTAL
- FOUND PROPERTY CORNER
- SET PROPERTY CORNER
- PROPERTY LINE
- MAILBOX
- SIGN
- DECIDUOUS TREE
- CONIFEROUS TREE
- BUSHES/SHRUBS
- TREE GROVE/SHELTER BELT
- BUILDING
- ASPHALT SURFACING
- CONCRETE SURFACING
- GRAVEL SURFACING
- CONCRETE CURB AND GUTTER



Note Regarding Existing Utilities
The contractor is specifically cautioned that the location and/or elevation of existing utilities as shown on these plans are based on records of the various utility companies and, where possible, measurements taken in the field. The information is not to be relied on as being exact or complete. The contractor shall call the appropriate utility companies at least 48 hours before any excavation to request exact field location of utilities.

It is the responsibility of the contractor to relocate all utilities requiring relocation. It is the responsibility of the contractor to verify in the field, the locations of existing water mains, water services, sewer mains and sewer services. The contractor shall be responsible for locating and preserving all existing utilities in their present condition. Existing utilities shown on the plans are for general information only and are to be located by the contractor prior to the start of construction.

Existing utilities included but not limited to:
 Underground and overhead electrical
 Underground and overhead cable television
 Underground water system
 Underground sewer system
 Underground and overhead telephone
 Underground natural gas

DATE: _____

NO. REVISIONS: _____

I hereby certify that this plan, specification, or report was prepared by me or under my direct supervision and that I am a duly registered Professional Engineer under the law of the State of South Dakota. Registration No. _____

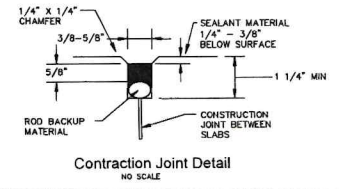
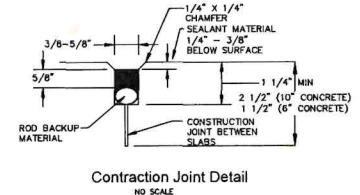
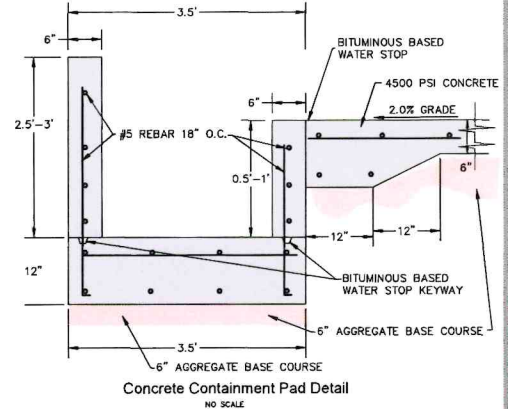
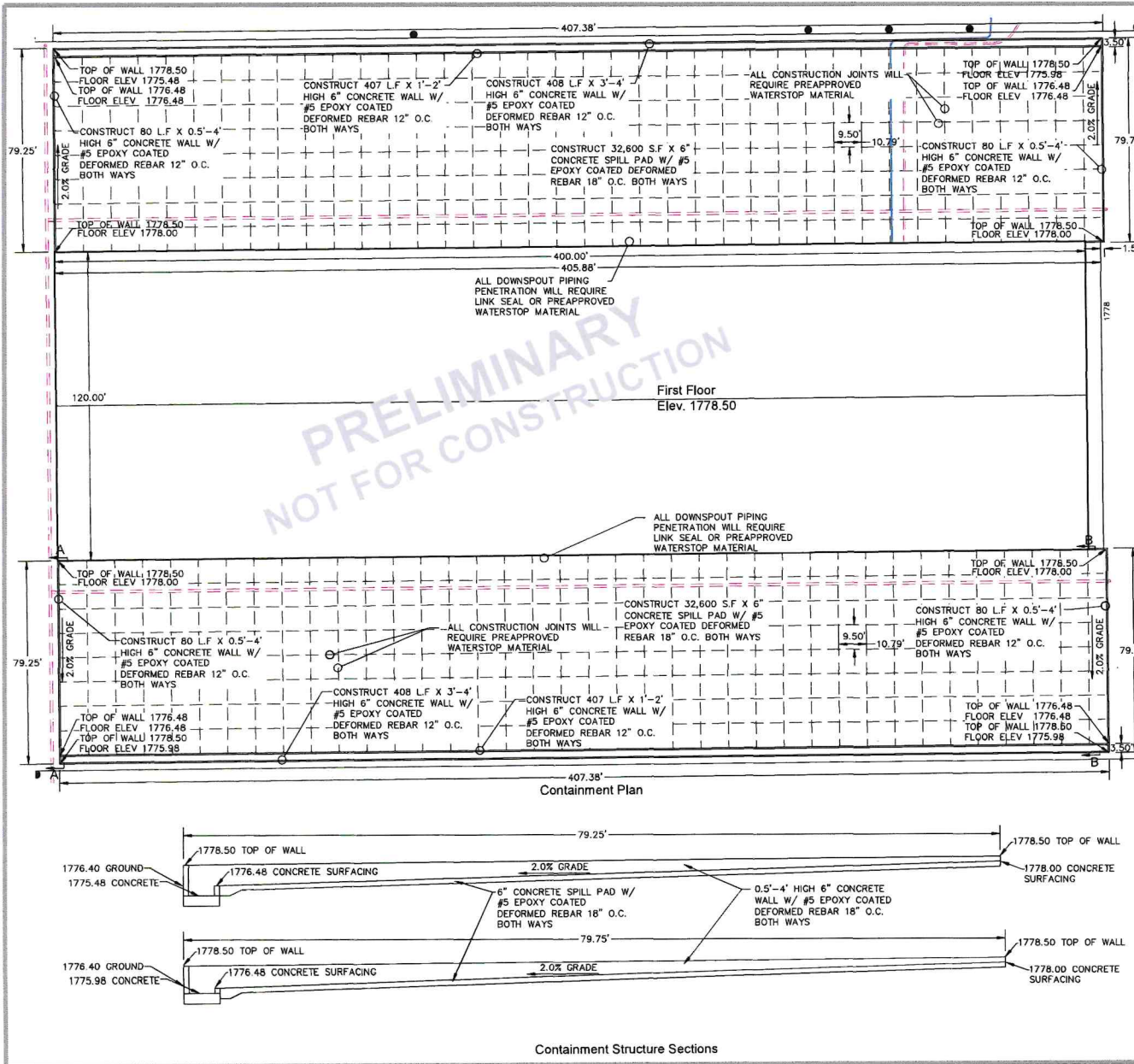
418 Production St.
Aberdeen, S.D. 57402
Phone: 605.225.1212
Fax: 605.225.2159
Email: bob@helmsengineering.com

SPN Helms
CIVIL ENGINEERS & LAND SURVEYORS

Project Layout and Existing Conditions
LEOLA DATA CENTER IMPROVEMENTS
LEOLA DATA CENTER, LLC
McPHERSON COUNTY, SOUTH DAKOTA

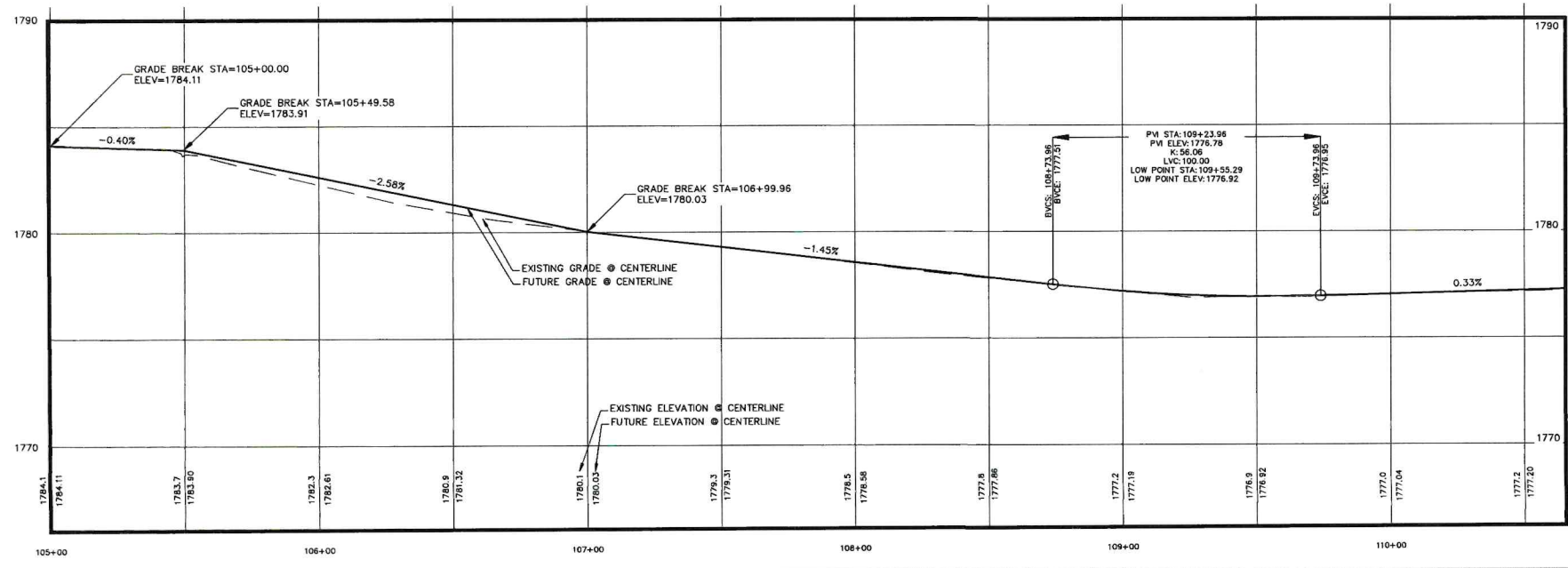
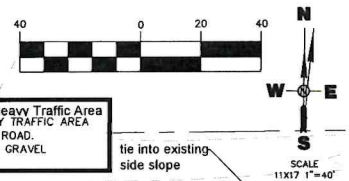
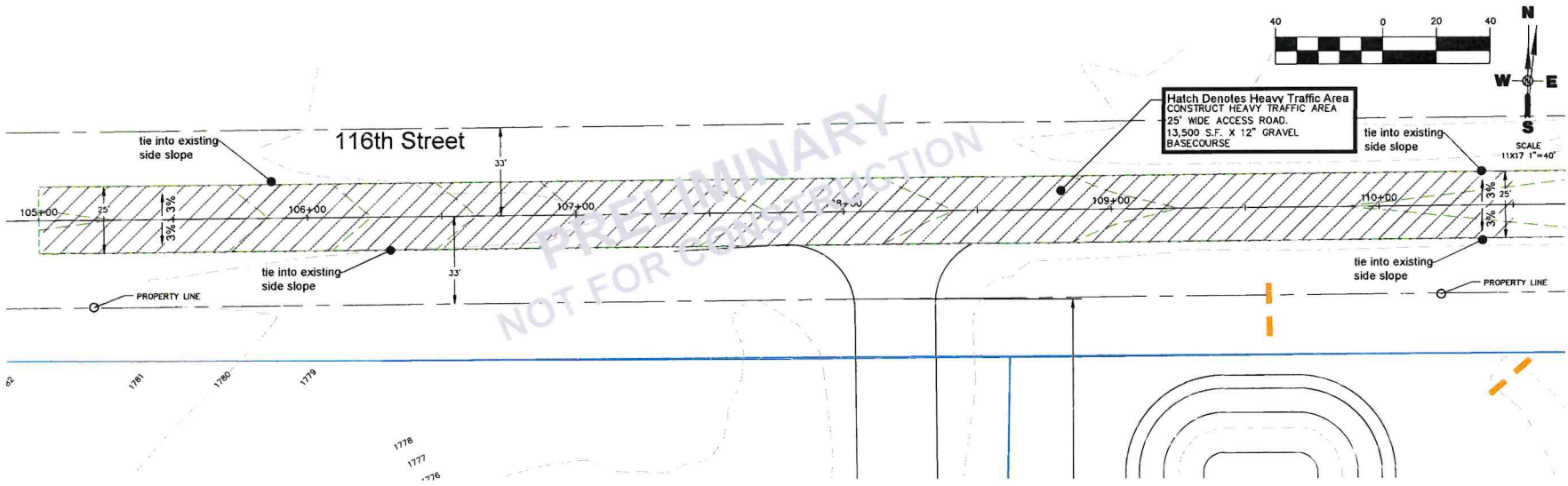
Drawn By: CLB
 Chk. By: BDS
 Proj. No: A10430
 Dwg. No: 10430 PNT-V2
 V.P. No: PLAN (2)
 Date: 6/17/26

4
OF
20

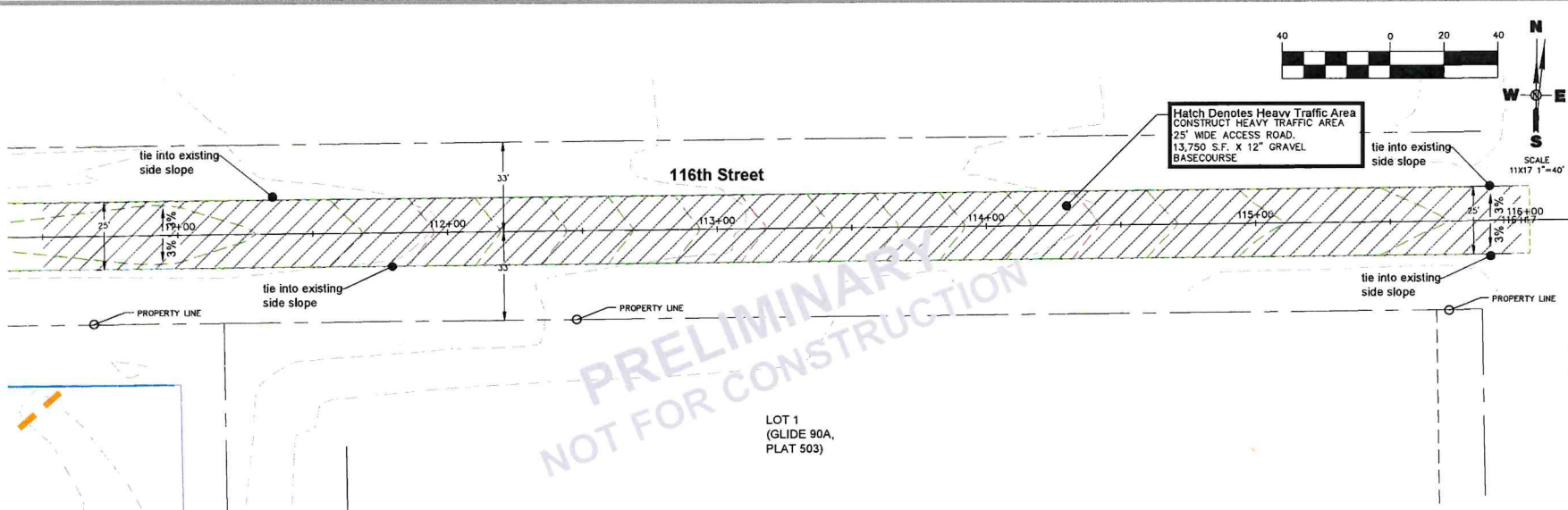


I hereby certify that this plan, specification, or report was prepared by me or under my direct supervision and that I am a duly Registered Professional Engineer under the laws of the State of South Dakota. Registration No. _____
 Date: _____
 No. Revisions: _____
 418 Franklin St. N.
 Aberdeen, SD 57402
 Phone: 605.225.1212
 Fax: 605.225.3189
 Email: bob@himmengrading.com
SPN Helms
 CIVIL ENGINEERS & LAND SURVEYORS
Containment Layout
 LEGOLA DATA CENTER IMPROVEMENTS
 LEGOLA DATA CENTER, LLC
 MCPHERSON COUNTY, SOUTH DAKOTA
 Drawn By: CLB
 Ck'd By: BDS
 Proj. No: A10430
 Desg. No: 10430 P11-V2
 VP. No: PLAN (4)
 Date: 6/17/26
 6
 OF

PRELIMINARY
 NOT FOR CONSTRUCTION

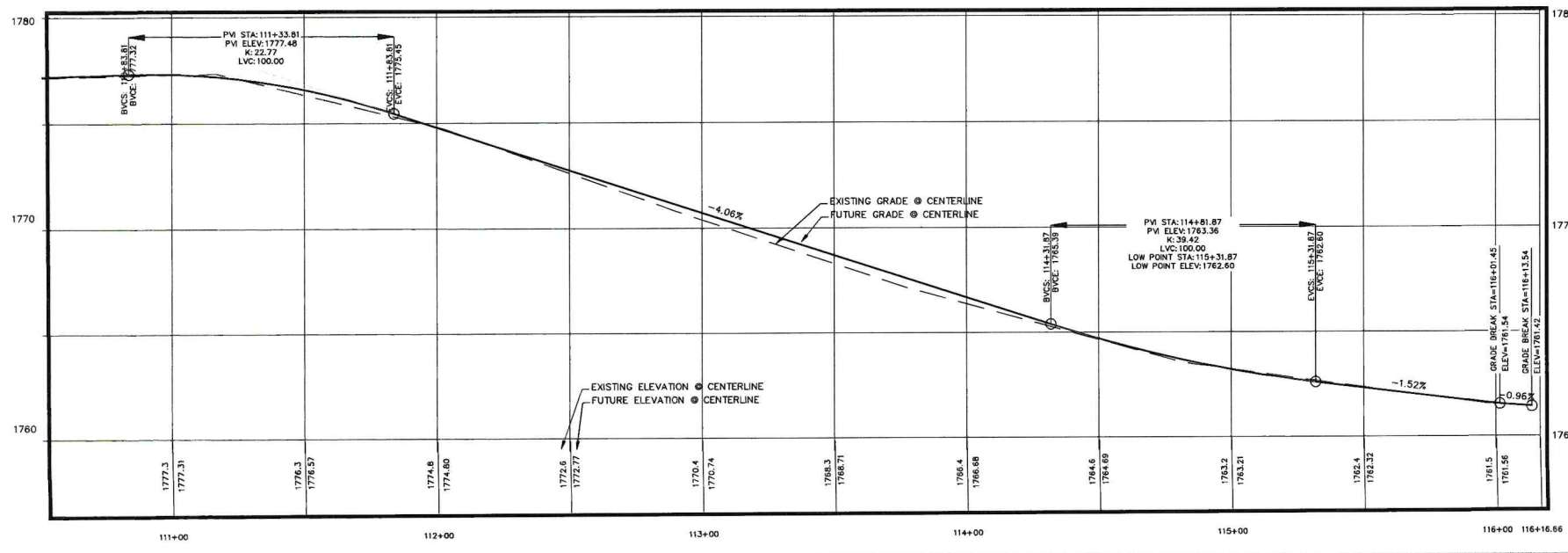


Date: _____
 No. Revisions: _____
 I hereby certify that this plan, specification, or report was prepared by me or under my direct supervision and that I am a duly Registered Professional Engineer under the laws of the State of South Dakota. Registration No. _____
 416 Production St. N.
 Aberdeen, S.D. 57402
 Phone: 605.225.1212
 Fax: 605.225.3189
 Email: bob@spnhelms.com
SPN Helms
 CIVIL ENGINEERS & LAND SURVEYORS
 Statutory Road Plan and Profile
 LEOA DATA CENTER IMPROVEMENTS
 LEOA DATA CENTER, LLC
 MCPHERSON COUNTY, SOUTH DAKOTA
 Drawn By: CLB
 Chk. By: BDS
 Proj. No: A10430
 Eng. No: 10430 PINT-V2
 VP. No: PLAN (5)
 Date: 6/17/26
7
 OF
 20



PRELIMINARY
 NOT FOR CONSTRUCTION

LOT 1
 (GLIDE 90A,
 PLAT 503)



Date: _____
 No. Revisions: _____
 I hereby certify that the plan, specification, or report was prepared by me or under my direct supervision and that I am a duly Registered Professional Engineer under the laws of the State of South Dakota. Registration No. _____

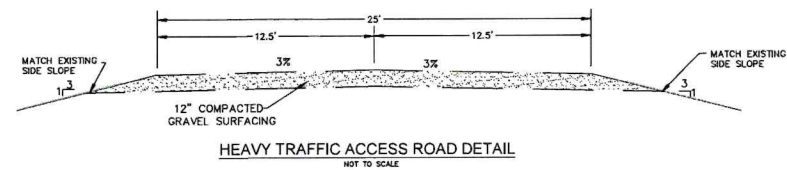
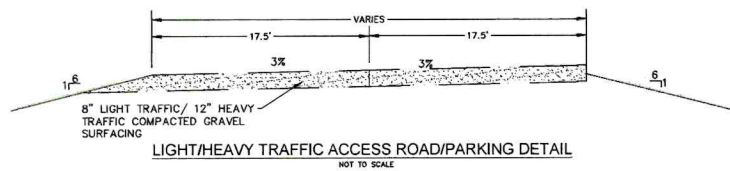
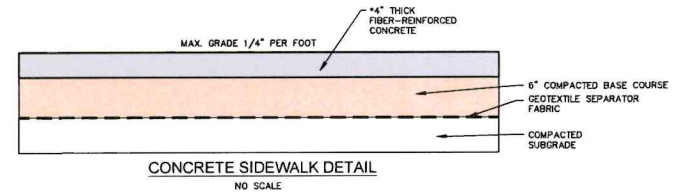
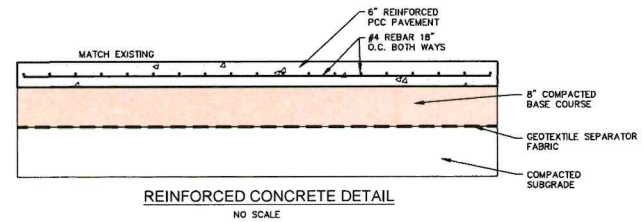
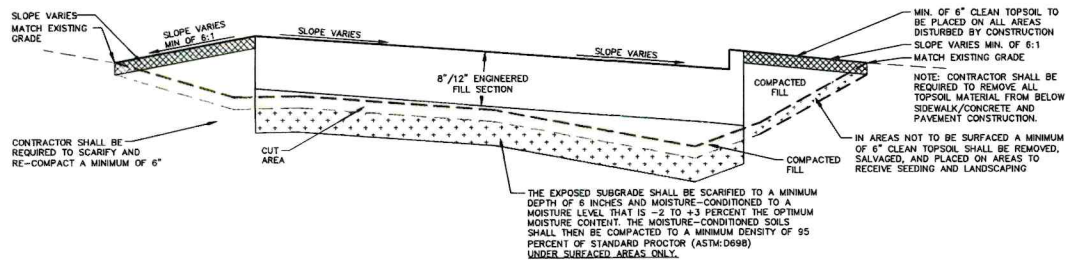
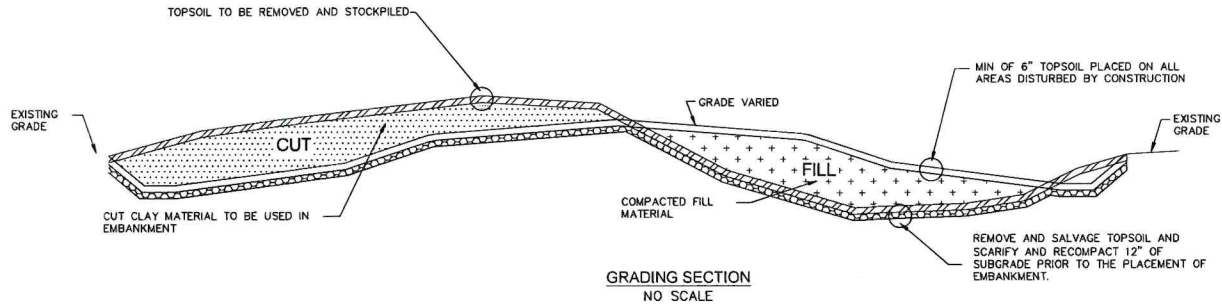
416 Productions S.N.
 Aberdeen, S.D. 57402
 Phone: 605.225.1212
 Fax: 605.225.3189
 Email: bob@416productions.com

SPN Helms
 CIVIL ENGINEERS & LAND SURVEYORS

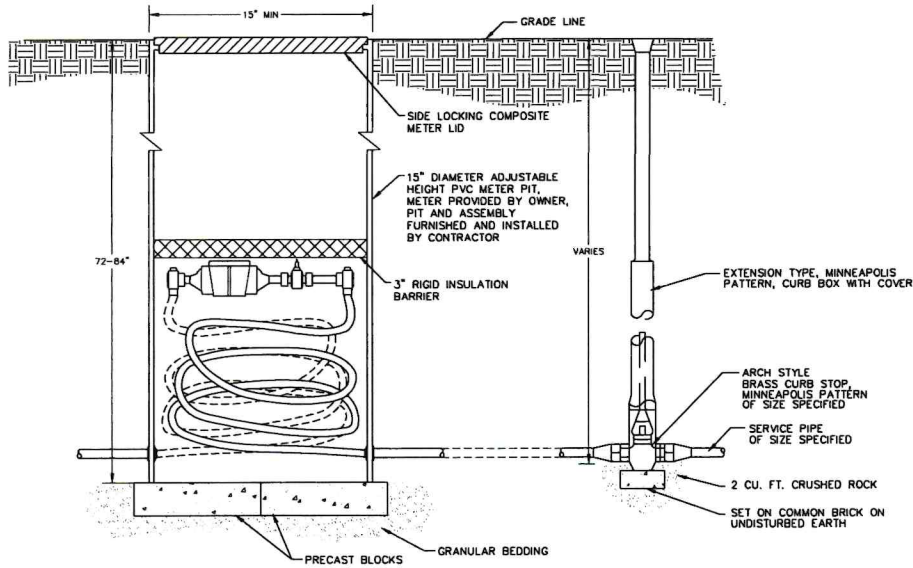
Statutory Road Plan and Profile
 LEOA DATA CENTER IMPROVEMENTS
 LEOA DATA CENTER, LLC
 MCPHERSON COUNTY, SOUTH DAKOTA

Drawn By: CLB
 Chk By: BDS
 Proj. No: A10430
 Des. No: 10430 PNT-V2
 VP. No: PLAN (8)
 Date: 6/17/20

8
 OF
 20

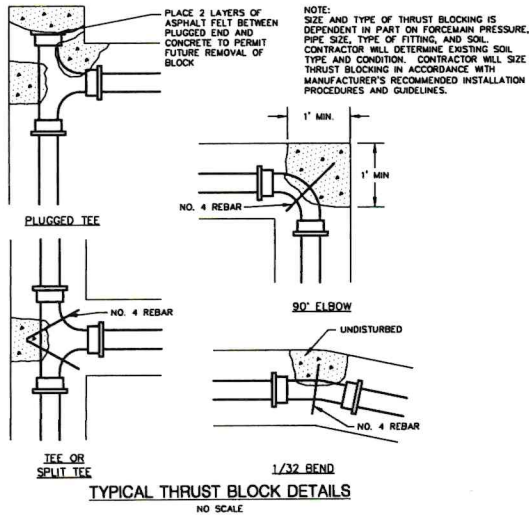


Date: _____
 No. Revisions: _____
 I hereby certify that this plan, specification, or report was prepared by me or under my direct supervision and that I am a duly Registered Professional Engineer under the laws of the State of South Dakota, Registration No. _____
 416 Production S.W.
 Aberdeen, S.D. 57402
 Phone: 605.225.1212
 Fax: 605.225.2189
 Email: bob@helmsengineering.com
SPN Helms
 CIVIL ENGINEERS & LAND SURVEYORS
 LEO LA DATA CENTER IMPROVEMENTS
 LEO LA DATA CENTER, LLC
 MCPHERSON COUNTY, SOUTH DAKOTA
 Drawn By: CLB
 Chk By: BDS
 Print No: A10430
 Draw No: 10430 PNT-V2
 V.P. No: TYP
 Date: 6/17/26

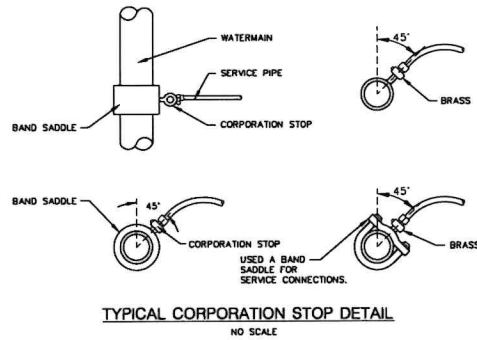


BURIED METER SETTING FOR 15" METER
NO SCALE

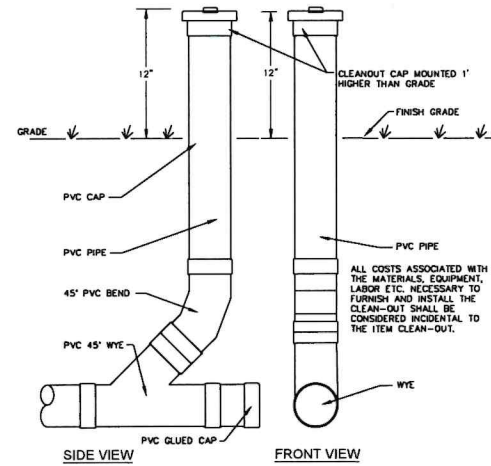
TYPICAL CURB STOP DETAIL
NO SCALE



TYPICAL THRUST BLOCK DETAILS
NO SCALE



TYPICAL CORPORATION STOP DETAIL
NO SCALE



CLEAN-OUT DETAIL
NO SCALE

Date	
Revisions	
No.	

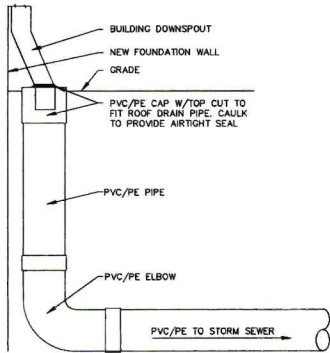
I hereby certify that this plan, specification, or report was prepared by me or under my direct supervision and that I am a duly Registered Professional Engineer under the laws of the State of South Dakota, Registration No. _____

416 Production St. N.
Aberdeen, S.D. 57402
Phone: 605.225.1212
Fax: 605.225.3169
Email: bob@spnhelms.com

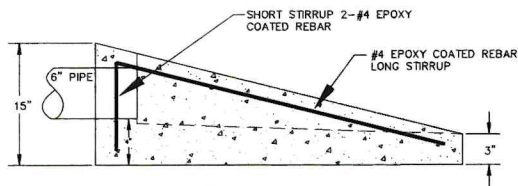
SPN Helms
CIVIL ENGINEERS & LAND SURVEYORS

LEOLA DATA CENTER IMPROVEMENTS
LEOLA DATA CENTER, LLC
MCPHERSON COUNTY, SOUTH DAKOTA

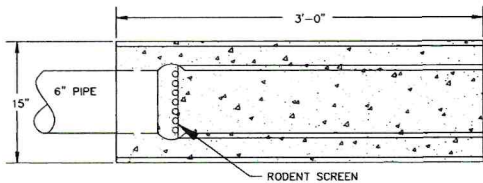
Drawn By: CLB
Chk. By: BDS
Proj. No: A10430
Dwg. No: 10430 FMT-V2
V.P. No: DETAIL (4)
Date: 6/17/26



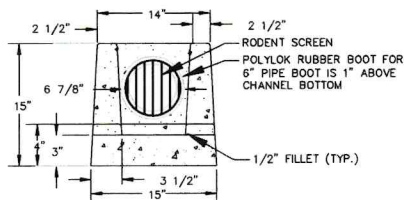
TYPICAL ROOF DRAIN CONNECTION DETAIL
NO SCALE



SECTIONAL VIEW

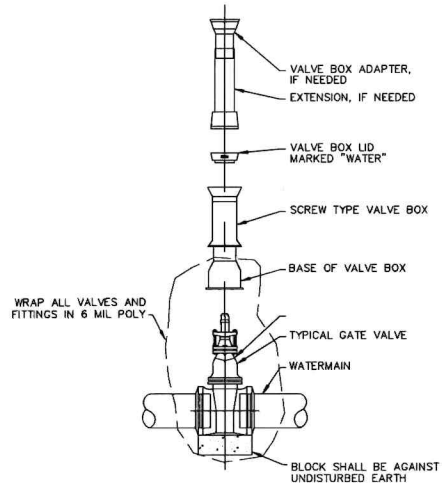


TOP VIEW

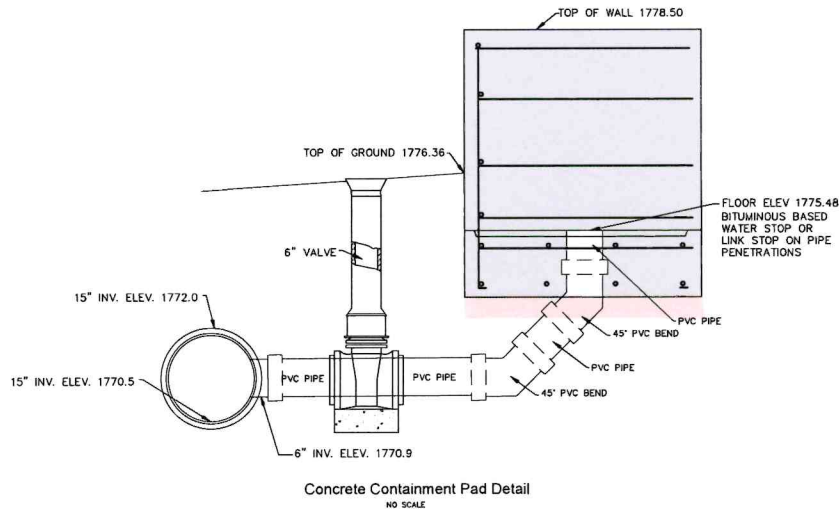


END VIEW

GRAVITY OUTLET STRUCTURE
NO SCALE



TYPICAL GATE VALVE DETAIL
NO SCALE



Date	
Revisions	

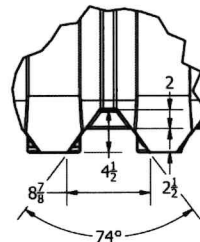
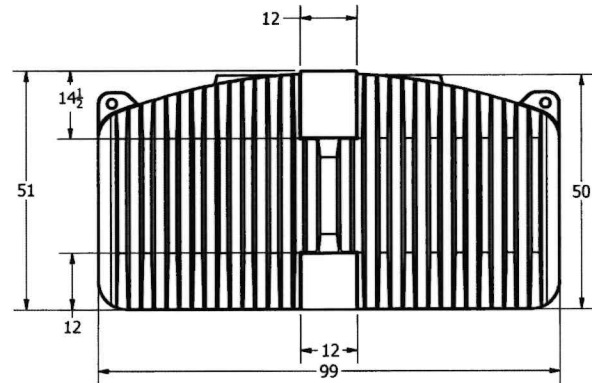
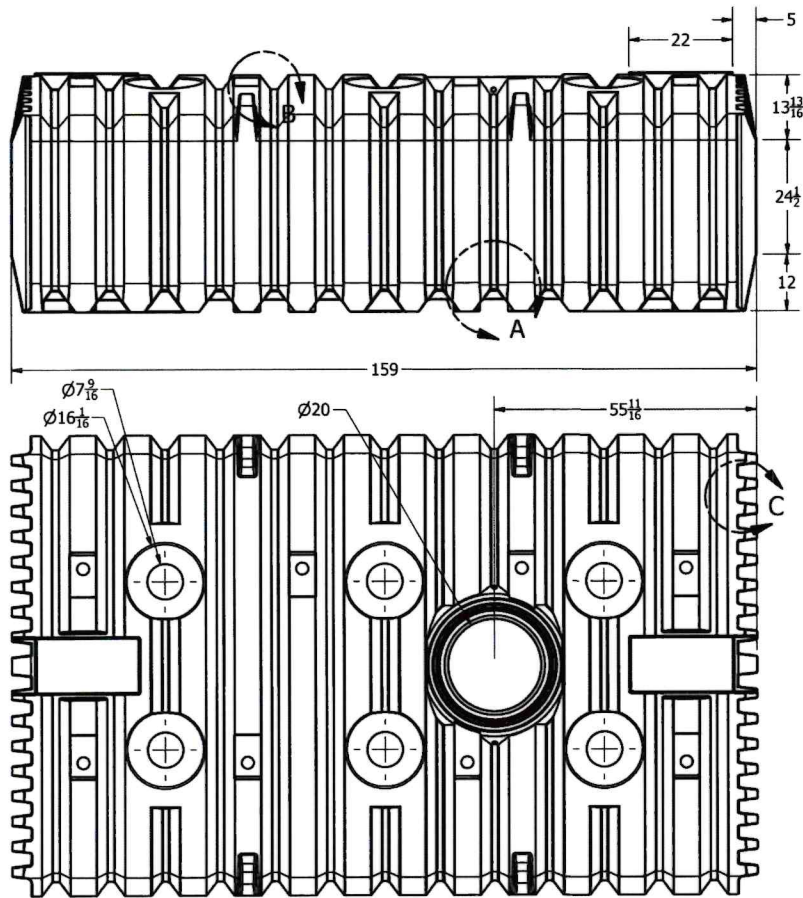
I hereby certify that this plan, specification, or report was prepared by me or under my direct supervision and that I am a duly Registered Professional Engineer under the law of the State of South Dakota.
Registration No.

416 Franklin St. N.
Aberdeen, S.D. 57402
Phone: 605.225.1212
Fax: 605.225.3189
Email: bob@himmengraining.com

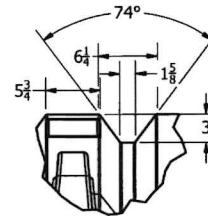


LEOLA DATA CENTER IMPROVEMENTS
LEOLA DATA CENTER, LLC
MCPHERSON COUNTY, SOUTH DAKOTA

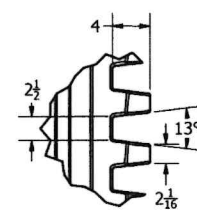
Drawn By: CLB
Chk By: BDS
Proj. No: A10430
Dwg. No: 10430 PNT-AV2
VP. No: DETAIL (6)
Date: 01/17/25



DETAIL A
SCALE 1 / 11



DETAIL B
SCALE 1 / 11



DETAIL C
SCALE 1 / 11

DRAWN	Todd Bolzer	11/15/2011	NORWESCO	
CHECKED			NORWESCO, INC., ST. BONIFACIUS, MN	
QA			TITLE	
MFG			2500 SEPTIC HOLDING TANK FOB MN	
APPROVED				
			SIZE	DWG NO
			B	44079
			SCALE: 1/16	REV
				A
			SHEET 1 OF 1	

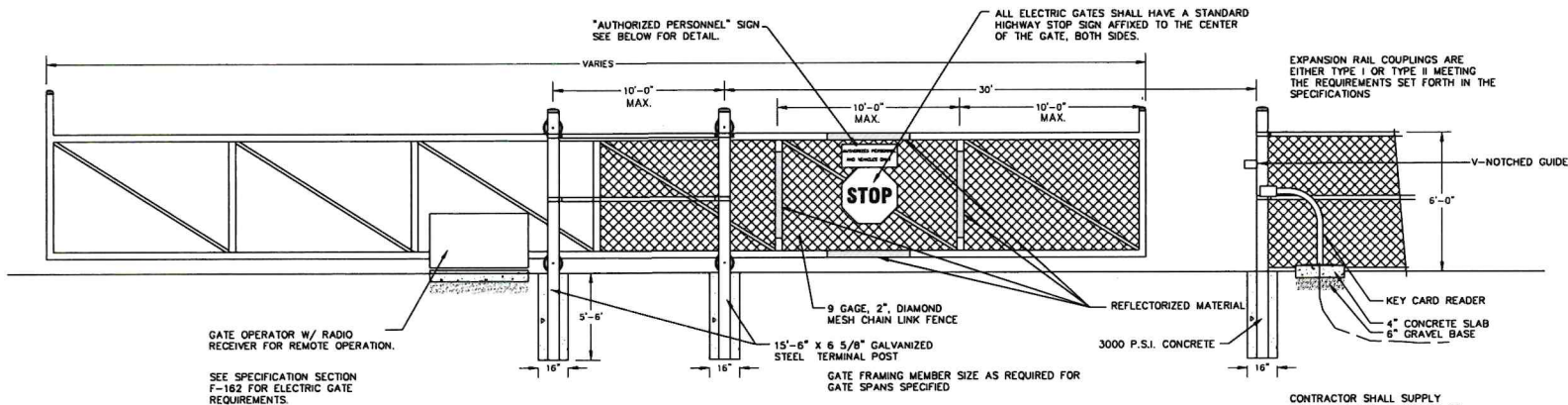
415 Production St. N.
Aberdeen, S.D. 57402
Phone: 605.225.1212
Fax: 605.225.3189
Email: bob@norwesco.com

I hereby certify that this plan, specification, or report was prepared by me or under my direct supervision and that I am a duly Registered Professional Engineer under the laws of the State of South Dakota, Registration No. _____

SPN Helms
CIVIL ENGINEERS & LAND SURVEYORS

LEOLA DATA CENTER IMPROVEMENTS
LEOLA DATA CENTER, LLC
MCPHERSON COUNTY, SOUTH DAKOTA

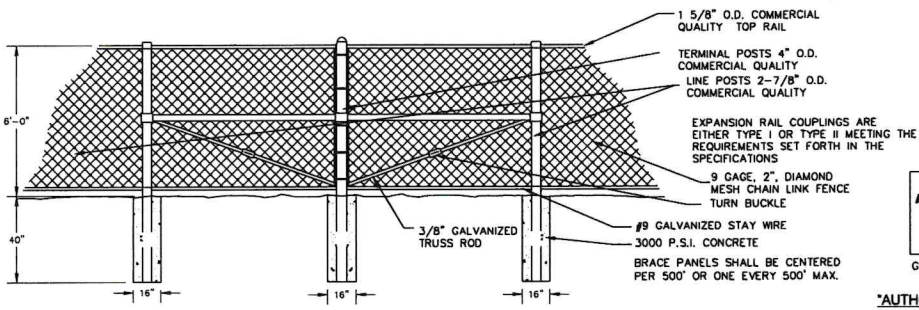
Drawn By: CLB
Chk By: BDS
Proj. No: A10430
Dwg. No: 10430 PNT-A2
Vpr. No: DETAIL (5)
Date: 6/17/20



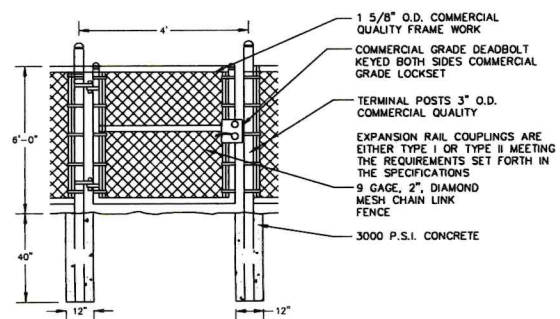
GATE OPERATOR W/ RADIO RECEIVER FOR REMOTE OPERATION.
SEE SPECIFICATION SECTION F-162 FOR ELECTRIC GATE REQUIREMENTS.

25' ELECTRIC CANTILEVERED ROLL GATE DETAIL
NO SCALE

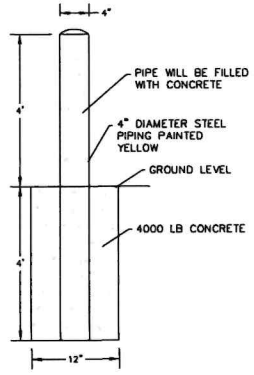
EXPANSION RAIL COUPLINGS ARE EITHER TYPE I OR TYPE II MEETING THE REQUIREMENTS SET FORTH IN THE SPECIFICATIONS
V-NOTCHED GUIDE
6'-0"
KEY CARD READER
4" CONCRETE SLAB
6" GRAVEL BASE
CONTRACTOR SHALL SUPPLY THE OWNER WITH A MINIMUM OF 100 KEY CARDS.



6'-0" CHAIN LINK BRACE ASSEMBLY DETAIL
NO SCALE



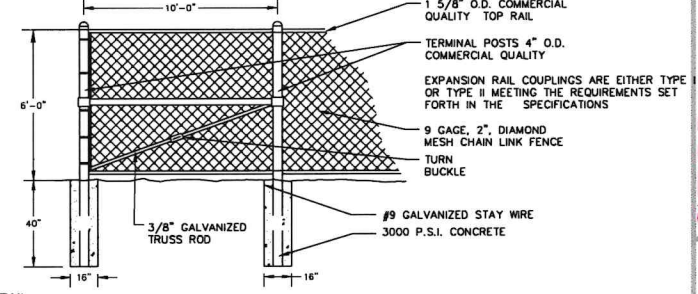
4' WALK THROUGH GATE DETAIL
NO SCALE



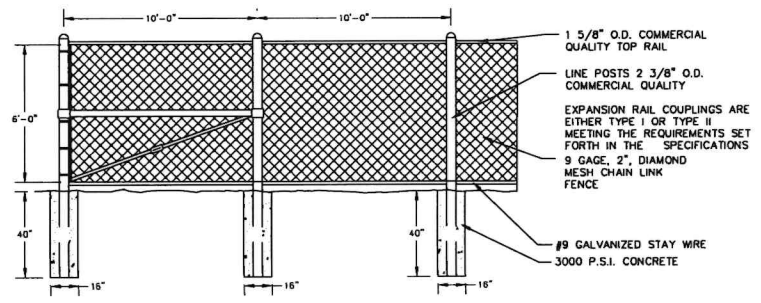
TYPICAL BOLLARD DETAIL
NO SCALE

**AUTHORIZED PERSONNEL
AND VEHICLES ONLY**
GREEN SIGN WITH WHITE LETTERS

"AUTHORIZED PERSONNEL" SIGN DETAIL
NO SCALE



6'-0" CHAIN LINK FENCE GATE, CORNER AND TERMINAL END DETAIL
NO SCALE



6'-0" CHAIN LINK FENCE DETAIL
NO SCALE

Date:	
No. Revisions:	

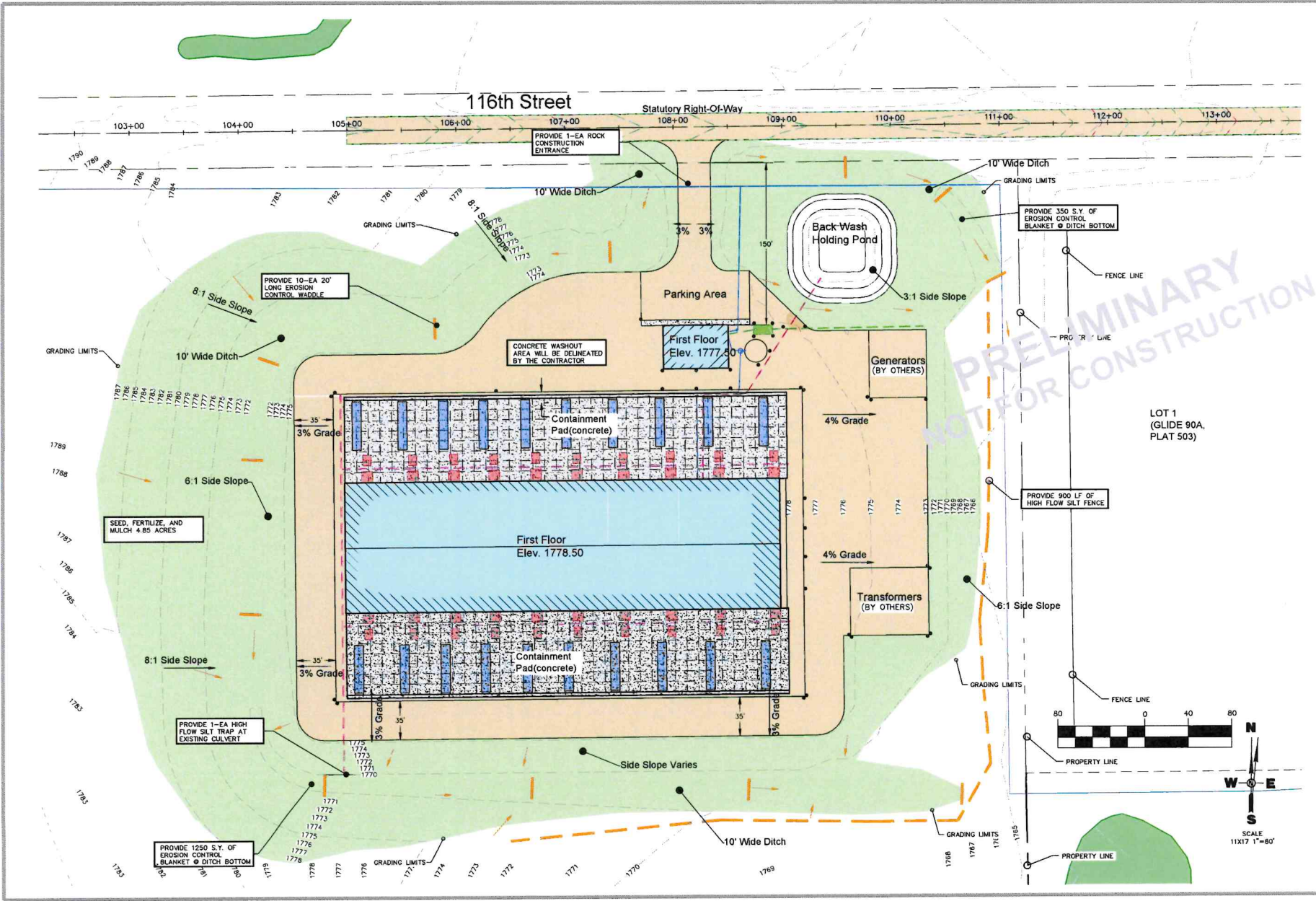
I hereby certify that the plan, specification, or report was prepared by me or under my direct supervision and that I am a duly Registered Professional Engineer under the laws of the State of South Dakota, Registration No. _____

416 Production St.
Aberdeen, S.D. 57402
Phone: 605.225.1212
Fax: 605.225.2189
Email: bob@spnhelms.com



Details
LEOLA DATA CENTER IMPROVEMENTS
LEOLA DATA CENTER, LLC
MCPHERSON COUNTY, SOUTH DAKOTA

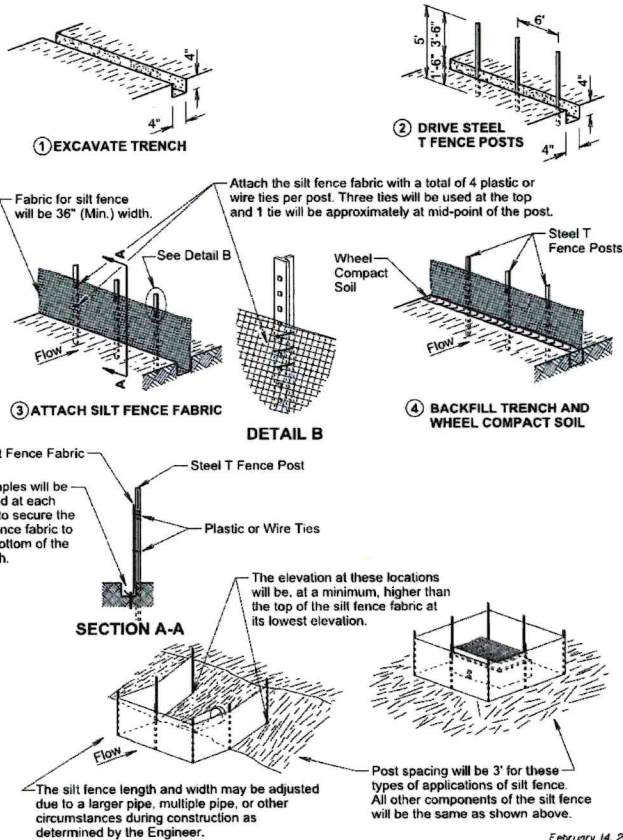
Drawn By: CLB
Chk'd By: BDS
Proj. No: A10430
Drawing No: 10430 PRT-V2
V.P. No: DETAIL (1)
Date: 6/17/26



PRELIMINARY
NOT FOR CONSTRUCTION

<p>416 Production St. N. Aberdeen, S.D. 57402 Phone: 605.225.1212 Fax: 605.225.2189 Email: bob@spnhelms.com</p>	<p>Date: _____ No. Revisions: _____</p> <p>I hereby certify that this plan, specification, or report was prepared by me or under my direct supervision and that I am a duly Registered Professional Engineer under the laws of the State of South Dakota. Registration No. _____</p>
<p>SPN Helms CIVIL ENGINEERS & LAND SURVEYORS</p>	
<p>Storm Water Pollution Prevention Plan</p>	
<p>LEOLA DATA CENTER IMPROVEMENTS LEOLA DATA CENTER, LLC MCPHERSON COUNTY, SOUTH DAKOTA</p>	
<p>Drawn By: CLB CHK By: BDS Proj. No: A10430 Orig. No: 10430 PRIT-V2 UP. No: PLAN (S) Date: 6/17/26</p>	
<p>SCALE 1"=80'</p>	
<p>16 OF 20</p>	

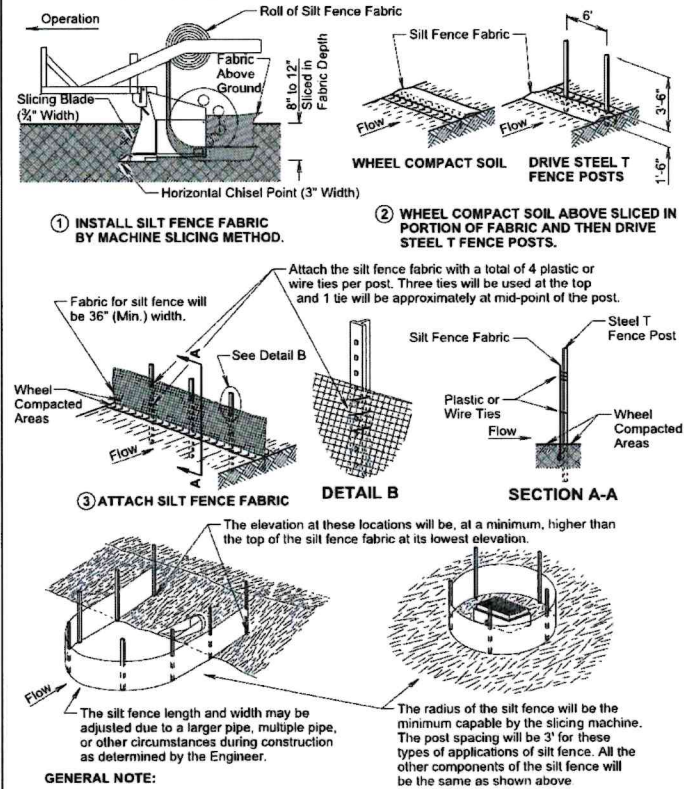
MANUAL HIGH FLOW SILT FENCE INSTALLATION



February 14, 2020

Published Date: 3rd Qtr. 2022	S D D O T	HIGH FLOW SILT FENCE	PLATE NUMBER 734.05
			Sheet 1 of 2

MACHINE SLICED HIGH FLOW SILT FENCE INSTALLATION



GENERAL NOTE:

If a trench can not be dug or the silt fence fabric can not be sliced in due to the type of earthen material (such as rock), then a row of 30 to 40 pound sandbags butted end to end will be provided on top of the extra length of silt fence fabric to prevent underflow.

February 14, 2020

Published Date: 3rd Qtr. 2022	S D D O T	HIGH FLOW SILT FENCE	PLATE NUMBER 734.05
			Sheet 2 of 2

No.	Revisions	Date

I hereby certify that this plan, specification, or report was prepared by me or under my direct supervision and that I am a duly Registered Professional Engineer under the laws of the State of South Dakota.
 416 Productions, S.H. Aberdeen, S.D. 57402
 Phone: 605.225.1212 Fax: 605.225.3189
 Email: bob@shimagingengineering.com



Storm Water Pollution Prevention Plan Details
 LEOLA DATA CENTER IMPROVEMENTS
 LEOLA DATA CENTER, LLC
 MCKERSON COUNTY, SOUTH DAKOTA

Drawn By	CLB
Chk' By	BDS
Proj. No.	A10430
Draw. No.	10430 P117-W2
VP. No.	SWPPP
Date	6/17/26

