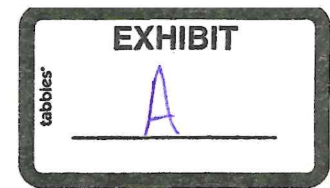




THESE DOCUMENTS HAVE BEEN PREPARED FOR THE PROJECT AND ARE NOT TO BE USED, REPRODUCED, COPIED, OR OTHERWISE TRANSMITTED IN ANY MANNER WITHOUT THE WRITTEN CONSENT OF HUFF CONSTRUCTION.



LEOLA DATA CENTER  
06/18/2026

# PRELIMINARY DESIGN, NOT FOR CONSTRUCTION

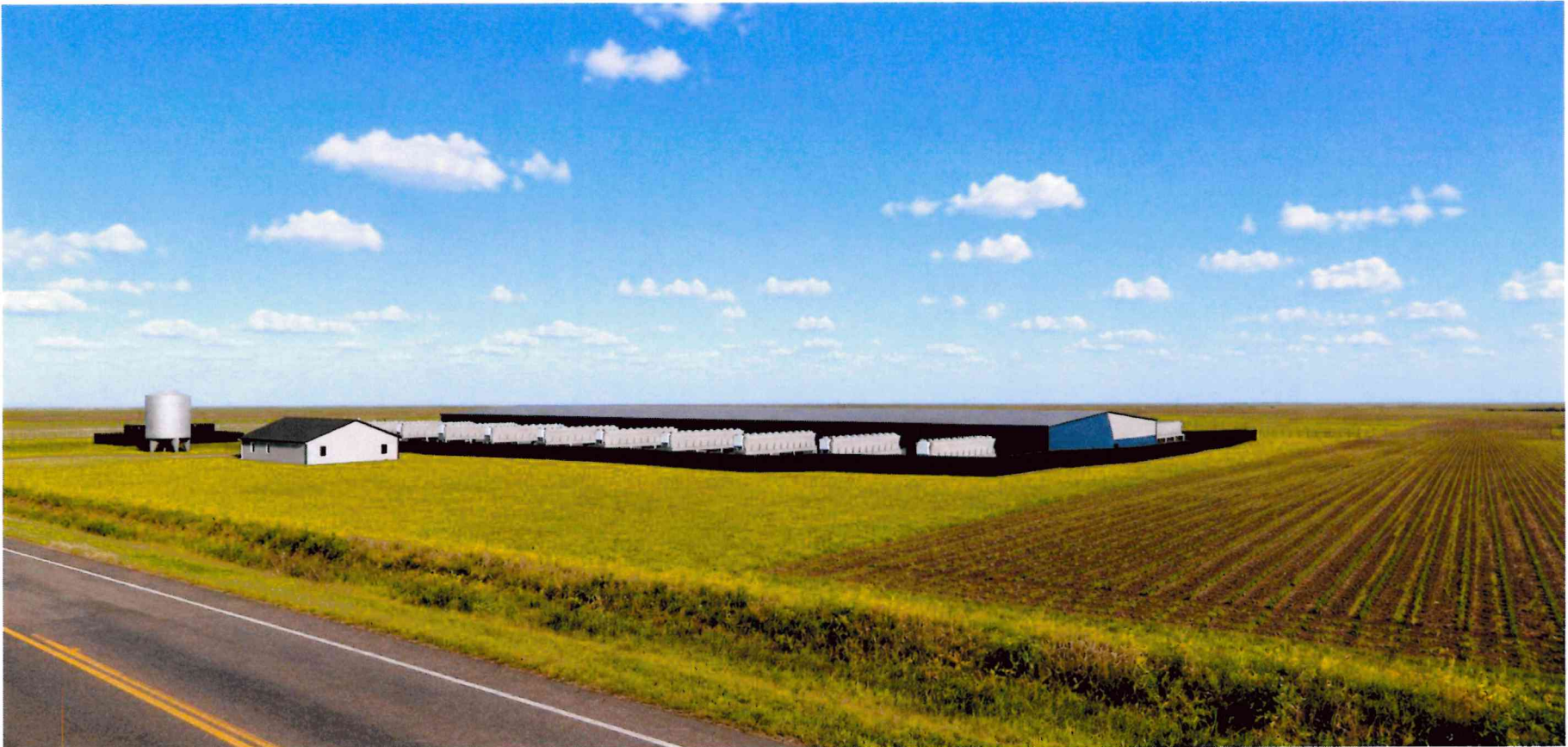




THESE DOCUMENTS HAVE BEEN PREPARED FOR THE PROJECT AND ARE NOT TO BE USED FOR ANY OTHER PROJECT OR PURPOSE. THE INFORMATION CONTAINED HEREIN IS THE PROPERTY OF HUFF CONSTRUCTION.

LEOLA DATA CENTER  
06/18/2026

# PRELIMINARY DESIGN, NOT FOR CONSTRUCTION



# PRELIMINARY DESIGN, NOT FOR CONSTRUCTION



FLOOR PLAN GENERAL NOTES

1. ALL PENETRATIONS THROUGH RATED PARTITIONS SHALL BE SEALED AND FINISHED PER CURRENT BUILDING CODE AND IFCB STANDARDS.
2. FINISH COMPARTMENT BLOCKING WITHIN PARTITIONS UNLESS/EVER WALL-MOUNTED ACCESSORIES, EQUIPMENT, OR CASEWORK ARE INDICATED OR REASONABLY ANTICIPATED.
3. MAINTAIN ALIGNMENT OF THE FINISHED FACE AT ALL WALL INTERSECTIONS WHERE PARTITION TYPES CHANGE ALONG A STRAIGHT RUN.
4. UNLESS NOTED OTHERWISE, LOCATE INTERIOR DOOR FRAME JAMES 4" FROM ADJACENT WALLS (APPROXIMATELY 4" FROM DOOR LEAF TO WALL FACE).
5. REFER TO THE J-400 SERIES DRAWINGS FOR DOOR, FRAME, AND WINDOW TYPES AND THE CORRESPONDING SCHEDULES.
6. ALL WALL LAYOUT DIMENSIONS ARE TO THE FINISHED FACE OF GYPSON BOARD, MASONRY, OR CONCRETE, UNLESS OTHERWISE INDICATED.

FLOOR PLAN KEYNOTES

1.01 EMPTY



325 Enterprise Street N  
Abingdon, VA 22912  
(434) 338-0052  
huff@huffdesign.com

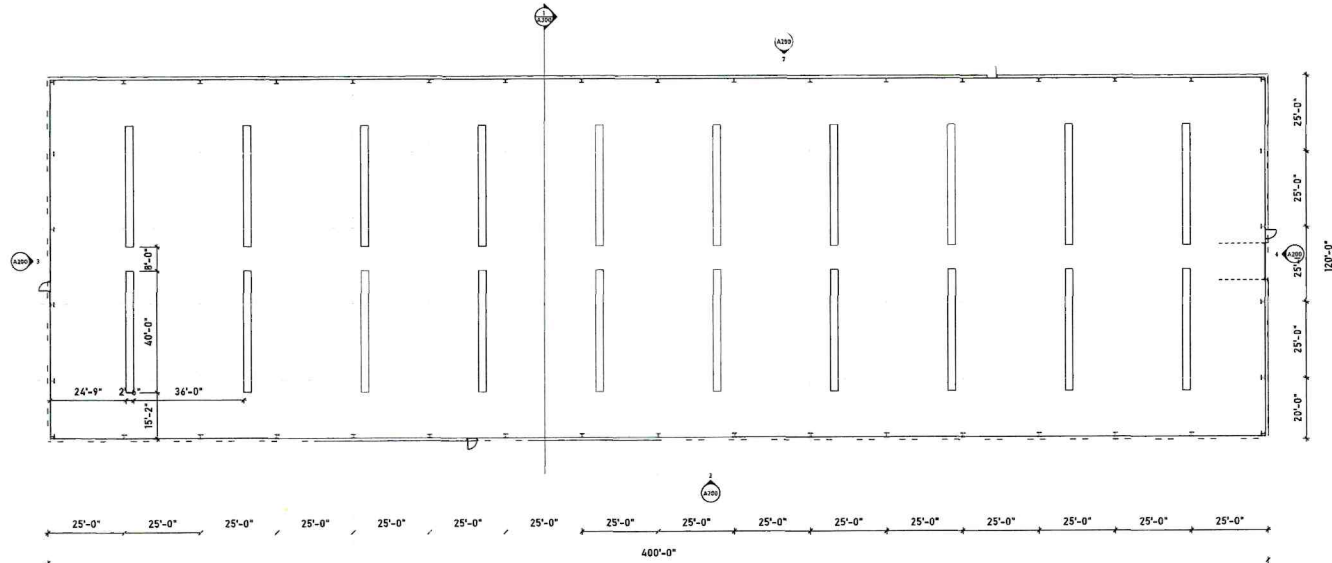
1077 S. 9th Street STE 1  
Roanoke, VA 24060  
(540) 353-2274  
huff@huffdesign.com

5510 East 10th Street, Suite 101  
Blaine Park, VA 22912  
(434) 438-1932  
huff@huffdesign.com

THESE DOCUMENTS HAVE  
BEEN PREPARED FOR  
THE CLIENTS LISTED IN THE  
PROJECT NAME AND ARE  
NOT TO BE REPRODUCED,  
REPRODUCED, COPIED, OR  
DISTRIBUTED FOR ANY  
OTHER PROJECT WITHOUT  
WRITTEN PERMISSION  
FROM AND OR  
COMPENSATION DUE TO  
HUFF CONSTRUCTION INC.

PRELIMINARY  
PLANS

NOT FOR CONSTRUCTION



FIRST FLOOR DATA CENTER

1/16" = 1'-0"

PROJECTNAME  
Lazlo Data Center LLC

AGENCY  
LEOLA, SD

REVISIONS  
6.16.2026

SHEETNAME  
FLOOR PLAN

SHEETNUMBER

A100

FLOOR PLAN GENERAL NOTES

1. ALL PENETRATIONS THROUGH RATED PARTITIONS SHALL BE SEALED AND FIRE-STOPPED PER CURRENT BUILDING CODE AND MPA STANDARDS.
2. PROVIDE CONTINUOUS BULKHEADS WITHIN PARTITIONS WHEREVER WALL-MOUNTED ACCESSORIES, EQUIPMENT, OR CASEWORK ARE INDICATED OR RECOMMENDED.
3. MAINTAIN ALIGNMENT OF THE FINISHED FACE AT ALL WALL INTERSECTIONS WHERE PARTITION TYPES CHANGE ALONG A STRAIGHT RUN.
4. UNLESS NOTED OTHERWISE, LOCATE INTERIOR DOOR FRAME JAMBS 1" FROM ADJACENT WALLS (APPROXIMATELY 6" FROM DOOR LEAF TO WALL FACE).
5. REFER TO THE A-100 SERIES DRAWINGS FOR DOOR, FRAME, AND WINDOW TYPES AND THE CORRESPONDING SCHEDULES.
6. ALL WALL LAUNCH DIMENSIONS ARE TO THE FINISHED FACE OF EPS-SUN BOARD, BALKOWIL, OR CONCRETE, UNLESS OTHERWISE INDICATED.

FLOOR PLAN KEYNOTES

201	EMPTY
-----	-------



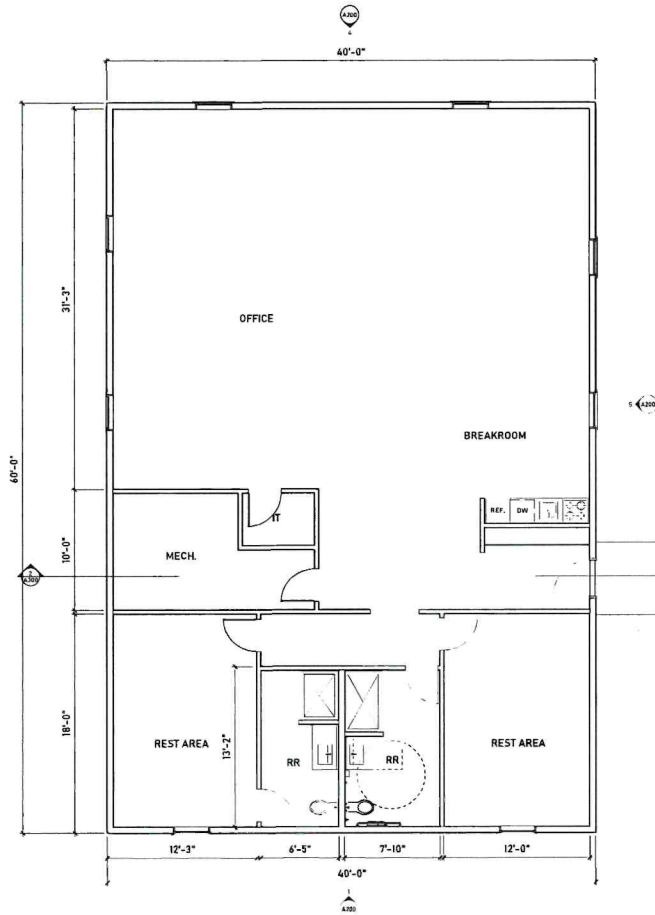
835 Edgewater Street N  
 Abingdon, VA 22021  
 (435) 251-0932  
 huffconstruction.com

1097 S 1300 Street STE 1  
 Norfolk, NE 68701  
 (402) 305-0274  
 huffconstruction.com

6785 East 10th Street, Suite #201  
 Sioux Falls, SD 57103  
 (605) 625-7633  
 huffconstruction.com

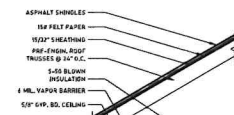
THESE DOCUMENTS HAVE BEEN PREPARED FOR THE CLIENTS LISTED IN THE PROJECT NAME AND ARE NOT TO BE REPRODUCED, COPIED, OR DISTRIBUTED IN ANY OTHER PROJECT WITHOUT WRITTEN PERMISSION FROM AND OR COMPENSATION DUE TO HUFF CONSTRUCTION INC.

**PRELIMINARY PLANS**  
 NOT FOR CONSTRUCTION

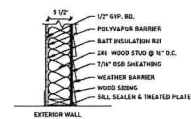


**FIRST FLOOR OFFICE**  
 1/4" = 1'-0"

ROOF TYPES



WALL TYPES



PROJECT NAME  
 Leola Data Center LLC

ADDRESS  
 LEOLA, SD

ISSUE DATE  
 6.16.2026

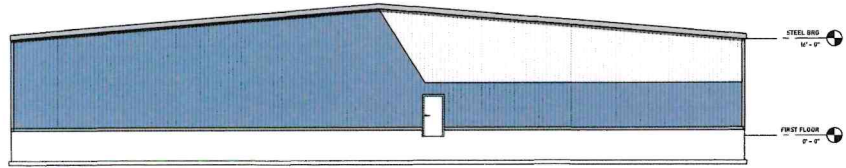
ISSUE NAME  
 FLOOR PLAN

ISSUE NUMBER

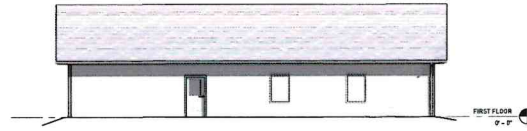
**A101**

THESE DOCUMENTS HAVE BEEN GENERATED FOR THE CLIENTS LISTED IN THE PROJECT NAME AND ARE NOT TO BE REPRODUCED, COPIED, OR DISTRIBUTED FOR ANY OTHER PROJECT WITHOUT WRITTEN PERMISSION FROM HUFF OR CONFIDENTIAL DUE TO HUFF CONSTRUCTION INC.

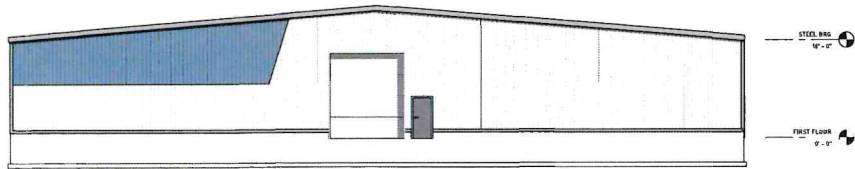
**PRELIMINARY PLANS**  
NOT FOR CONSTRUCTION



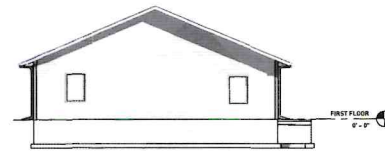
③ NORTH ELEVATION  
1/8" = 1'-0"



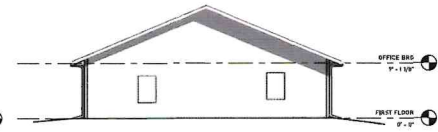
⑤ NORTH ELEVATION - OFFICE  
1/8" = 1'-0"



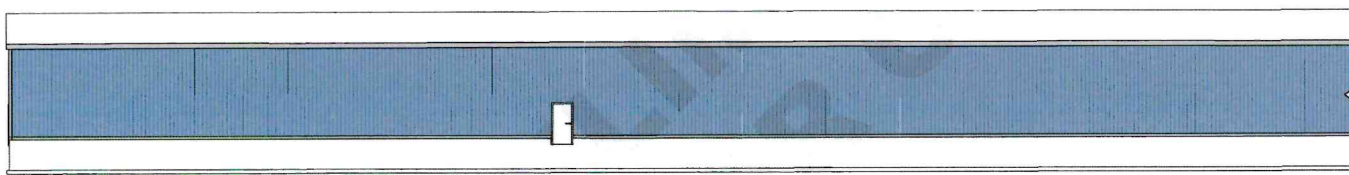
⑥ SOUTH ELEVATION  
1/8" = 1'-0"



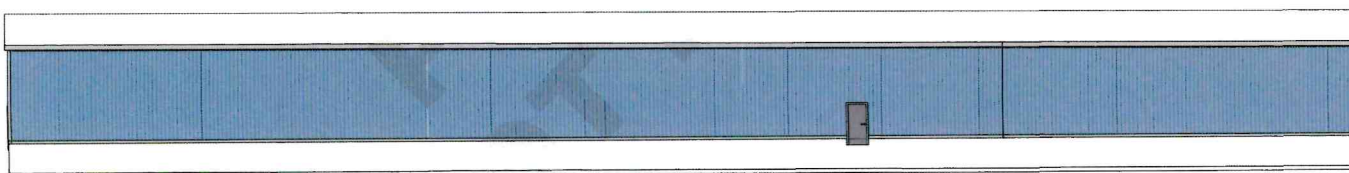
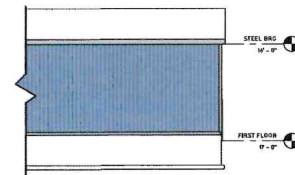
① WEST ELEVATION  
1/8" = 1'-0"



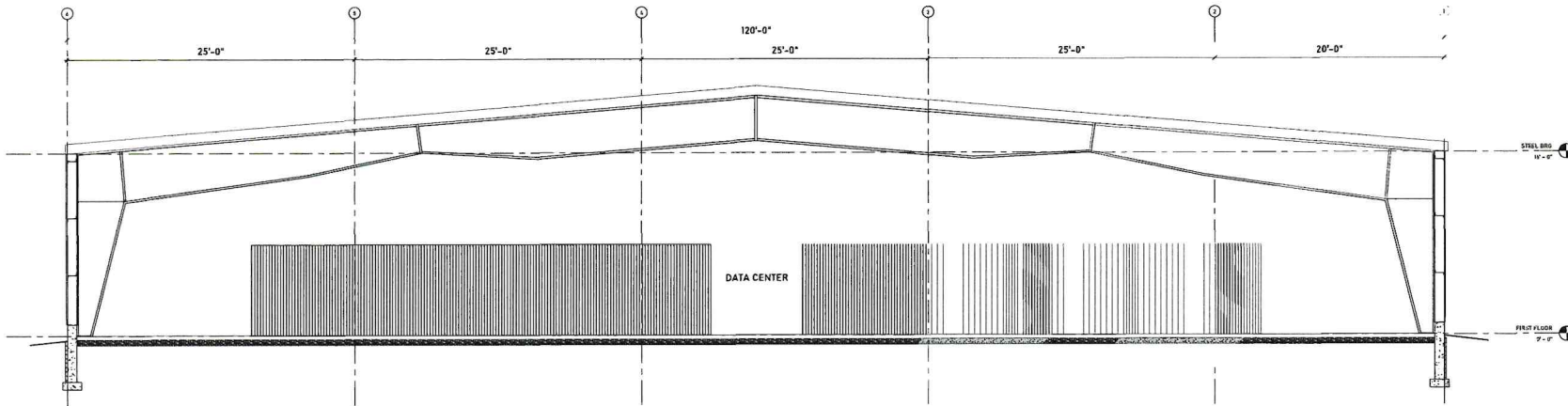
④ EAST ELEVATION  
1/8" = 1'-0"



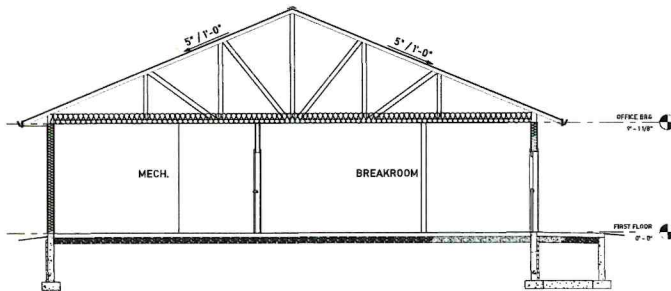
⑦ WEST ELEVATION  
1/8" = 1'-0"



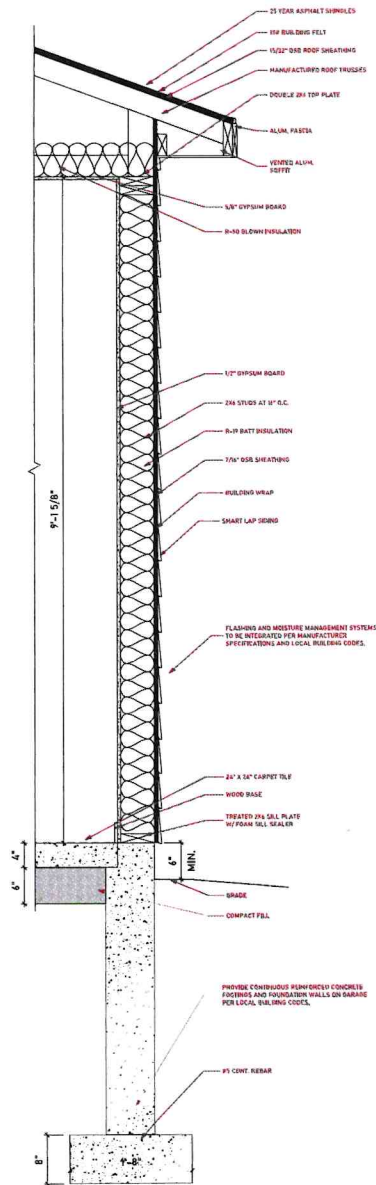
② EAST ELEVATION  
1/8" = 1'-0"



① DATA CENTER SECTION  
1/4" = 1'-0"



② OFFICE SECTION  
1/4" = 1'-0"



**OFFICE WALL SECTION**  
1 1/2" x 1'-0"

THESE DOCUMENTS HAVE BEEN GENERATED FOR THE CLIENTS LISTED IN THE PROJECT NAME AND ARE NOT TO BE USED, REPRODUCED, COPIED, OR DISTRIBUTED FOR ANY OTHER PROJECT WITHOUT WRITTEN PERMISSION FROM AND/OR CONSENT FROM HUFF CONSTRUCTION INC.

**PRELIMINARY  
PLANS**  
NOT FOR CONSTRUCTION

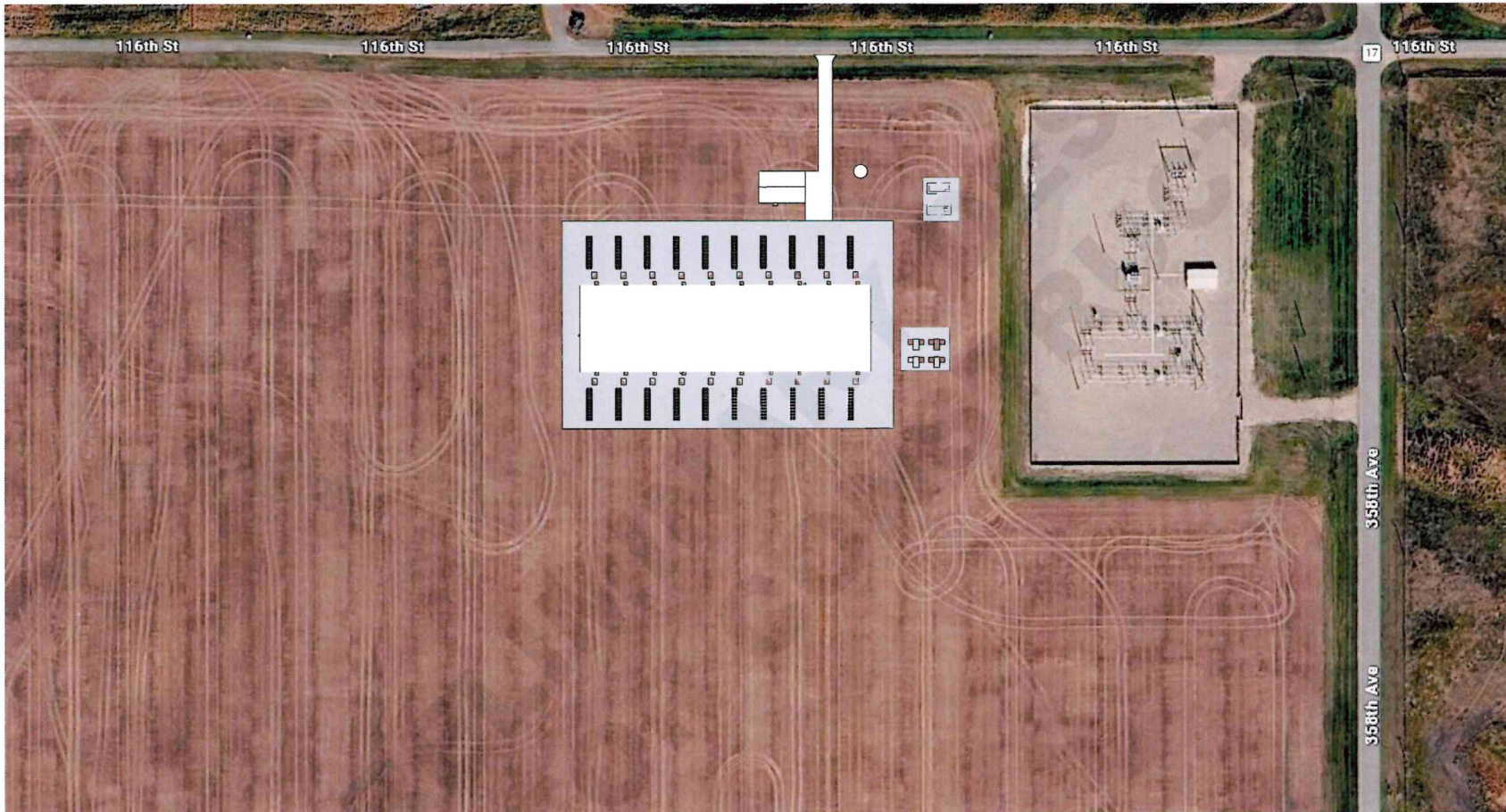
PROJECT NAME  
Lecia Data Center LLC

ADDRESS  
LEOLA, MD

DATE DWN  
6.14.2025

SHEET NAME  
SECTION DETAILS

SHEET NUMBER



**SITE PLAN**  
1" = 60'-0"