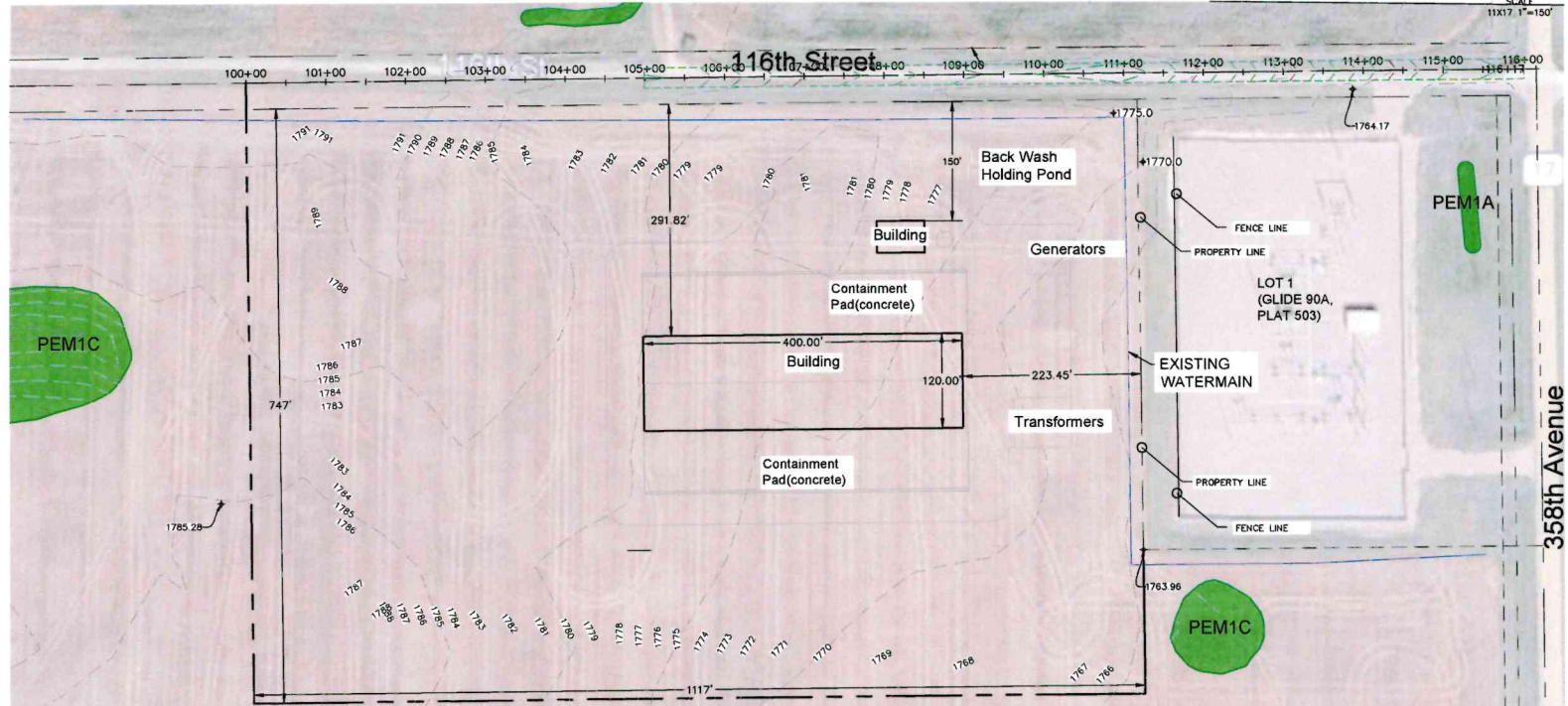


NE1/4 OF SECTION 28-T126N-R68W 5TH P.M.,
McPHERSON COUNTY, SOUTH DAKOTA

LEGEND

- D- WOOD/PRIVACY FENCE
- O- CHAIN LINK FENCE
- X- BARBED WIRE FENCE
- S- STORM SEWER PIPE/CULVERT
- G- STORM SEWER MANHOLE
- F- STORM SEWER FLARED END
- I- STORM SEWER INLET
- SS- SANITARY SEWER PIPE
- SM- SANITARY SEWER MANHOLE
- SC- SANITARY SEWER CLEANOUT
- W- WATERMAIN PIPE
- V- WATER VALVE
- H- FIRE HYDRANT
- C- CURB STOP
- Y- YARD HYDRANT
- L- FLOOD LIGHT
- P- LIGHT POLE
- U- UTILITY POLE
- E- ELECTRICAL PEDESTAL
- OHE- OVERHEAD POWER
- UE- UNDERGROUND ELECTRICAL
- G- GAS VALVE
- UG- UNDERGROUND GAS LINE
- UT- UNDERGROUND TELEPHONE LINE
- FO- UNDERGROUND FIBER OPTIC LINE
- C- UNDERGROUND CABLE TV LINE
- TE- TELECOM PEDESTAL
- C- CABLE TV PEDESTAL
- F- FOUND PROPERTY CORNER
- S- SET PROPERTY CORNER
- P- PROPERTY LINE
- M- MAILBOX
- S- SIGN
- D- DECIDUOUS TREE
- C- CONIFEROUS TREE
- B- BUSHES/SHRUBS
- T- TREE GROVE/SHELTER BELT
- B- BUILDING
- A- ASPHALT SURFACING
- C- CONCRETE SURFACING
- G- GRAVEL SURFACING
- C- CONCRETE CURB AND GUTTER



Note Regarding Existing Utilities
The contractor is specifically cautioned that the location and/or elevation of existing utilities as shown on these plans are based on records of the various utility companies and, where possible, measurements taken in the field. The information is not to be relied on as being exact or complete. The contractor shall call the appropriate utility companies at least 48 hours before any excavation to request exact field location of utilities.

It is the responsibility of the contractor to relocate all utilities requiring relocation. It is the responsibility of the contractor to verify in the field, the locations of existing water mains, water services, sewer mains and sewer services. The contractor shall be responsible for locating and preserving all existing utilities in their present condition. Existing utilities shown on the plans are for general information only and are to be located by the contractor prior to the start of construction.

- Existing utilities included but not limited to:
- Underground and overhead electrical
 - Underground and overhead cable television
 - Underground water system
 - Underground sewer system
 - Underground and overhead telephone
 - Underground natural gas

PRELIMINARY
NOT FOR CONSTRUCTION

Date: _____
Revisions: _____

I hereby certify that this plan, specification, or report was prepared by me or under my direct supervision and that I am a duly Registered Professional Engineer under the law of the State of South Dakota. Registration No. _____

418 Production St. N.
Aberdeen, S.D. 57402
Phone: 605.223.3188
Fax: 605.223.3188
Email: bobbs@helmsengineering.com

SPN
Helm's

CIVIL ENGINEERS & LAND SURVEYORS

Project Layout and Existing Conditions
LEOLA DATA CENTER IMPROVEMENTS
LEOLA DATA CENTER, LLC
McPHERSON COUNTY, SOUTH DAKOTA

Drawn By: CLB
Chk By: BDS
Proj. No: A10430
Orig. No: 10430 PNT-V2
Plan No: PLAN 03
Date: 6/17/09

4

OF
20