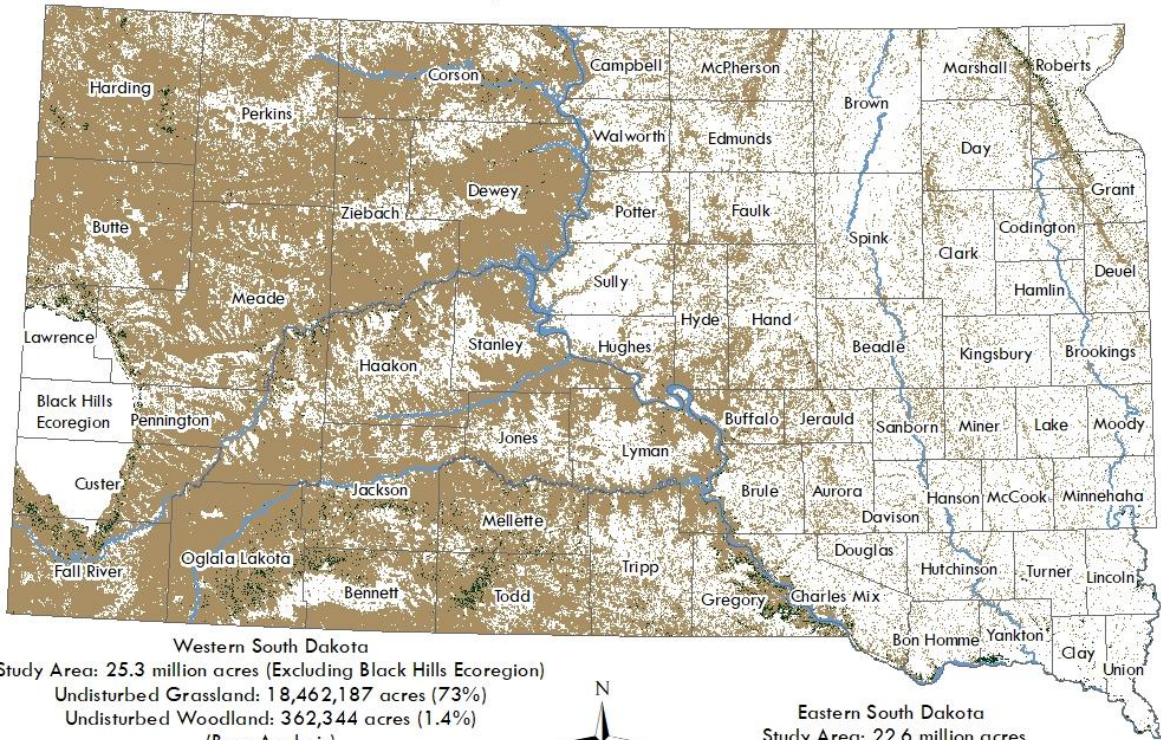
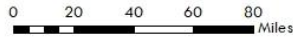
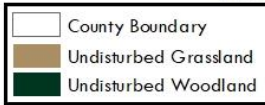


South Dakota Potentially Undisturbed (Native) Land: 2013



Western South Dakota
 Study Area: 25.3 million acres (Excluding Black Hills Ecoregion)
 Undisturbed Grassland: 18,462,187 acres (73%)
 Undisturbed Woodland: 362,344 acres (1.4%)
 (Base Analysis)

Eastern South Dakota
 Study Area: 22.6 million acres
 Undisturbed Grassland: 4,807,927 acres (21.2%)
 Undisturbed Woodland: 115,891 acres (0.5%)
 (LiDAR Refined)



Map Published 1/25/2024 by Brent Richardson, SDSU Extension