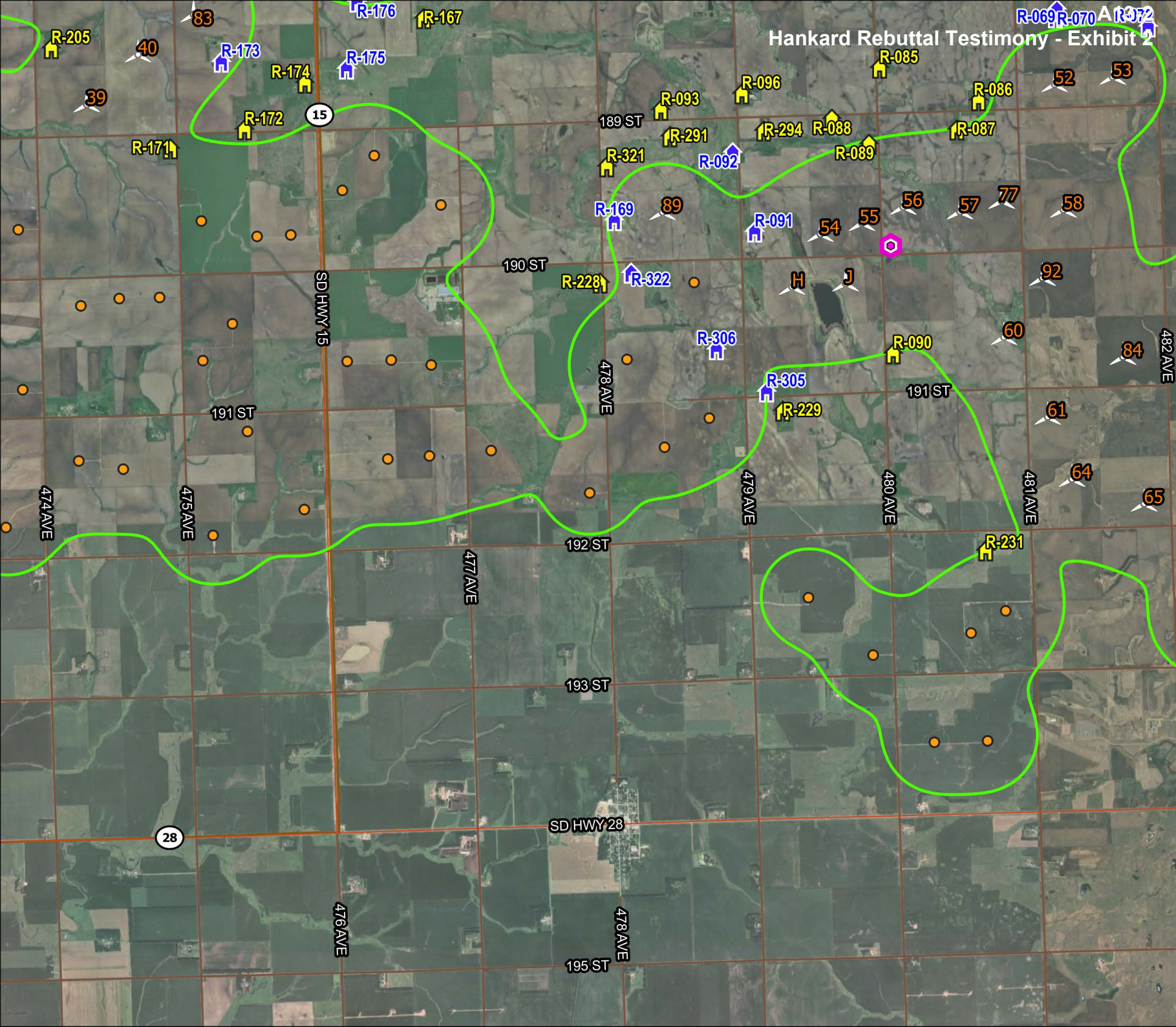


Hankard Rebuttal Testimony - Exhibit 2

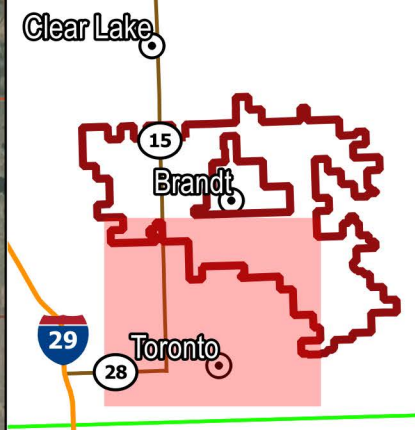
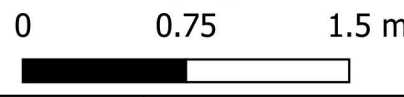


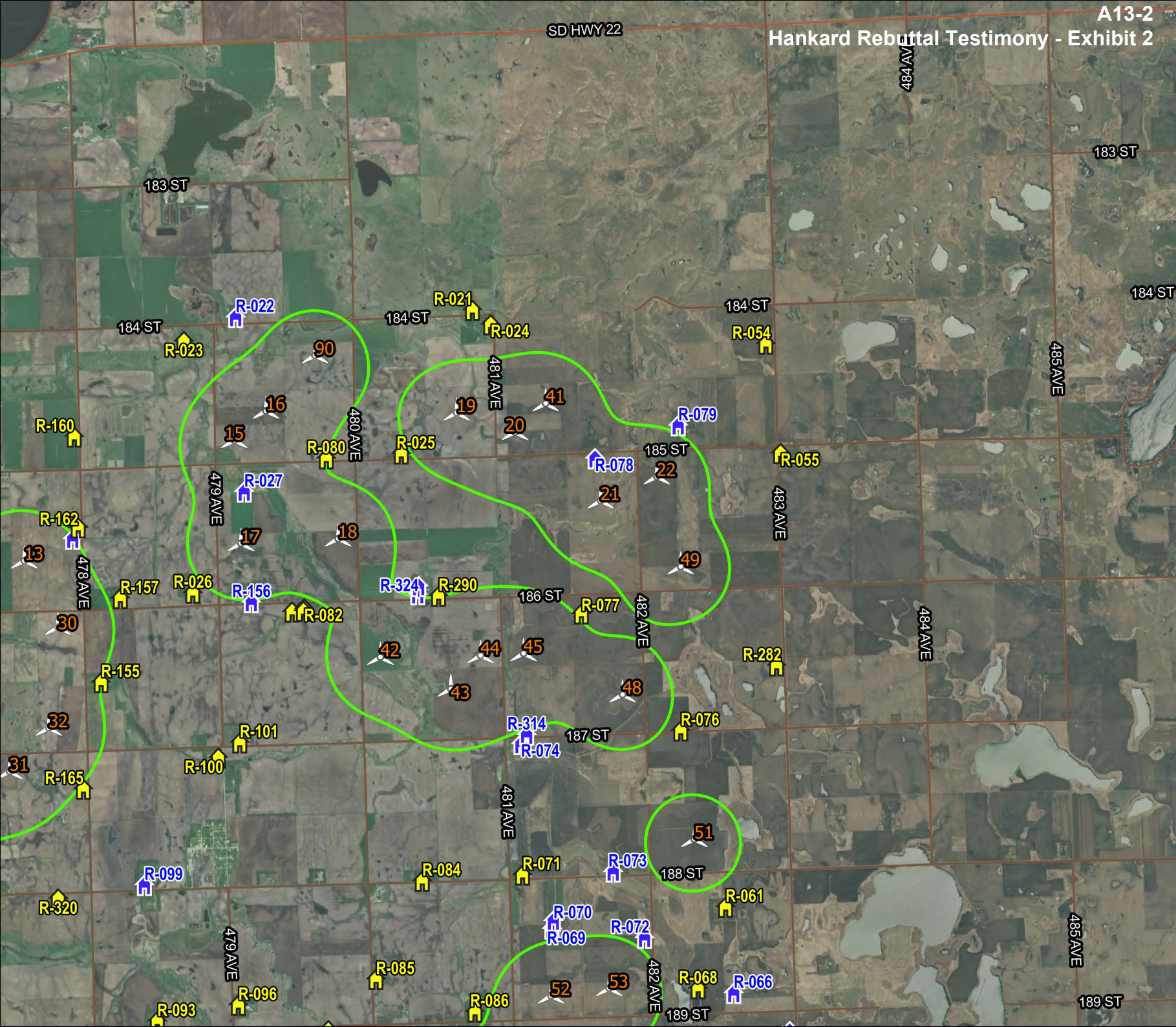
- South Deuel Wind Turbine
- GE 3.8-154 Turbines
- Collector Substation
- Project Area
- State Boundary
- County Boundary
- Tatanka Ridge Wind Turbine






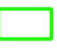

- ### Receptors
- Non-Participating
 - Participating

Predicted Noise Level Contours

45 dBA





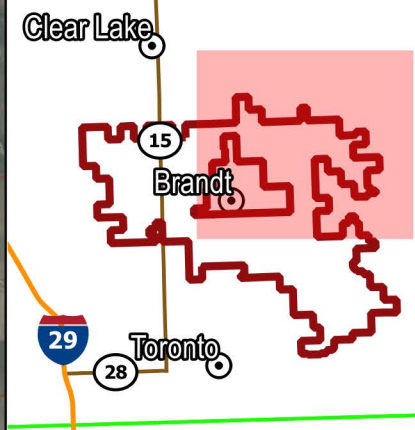
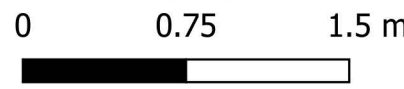
-  South Deuel Wind Turbine
-  GE 3.8-154 Turbines
-  Collector Substation
-  Project Area
-  State Boundary
-  County Boundary
-  Tatanka Ridge Wind Turbine

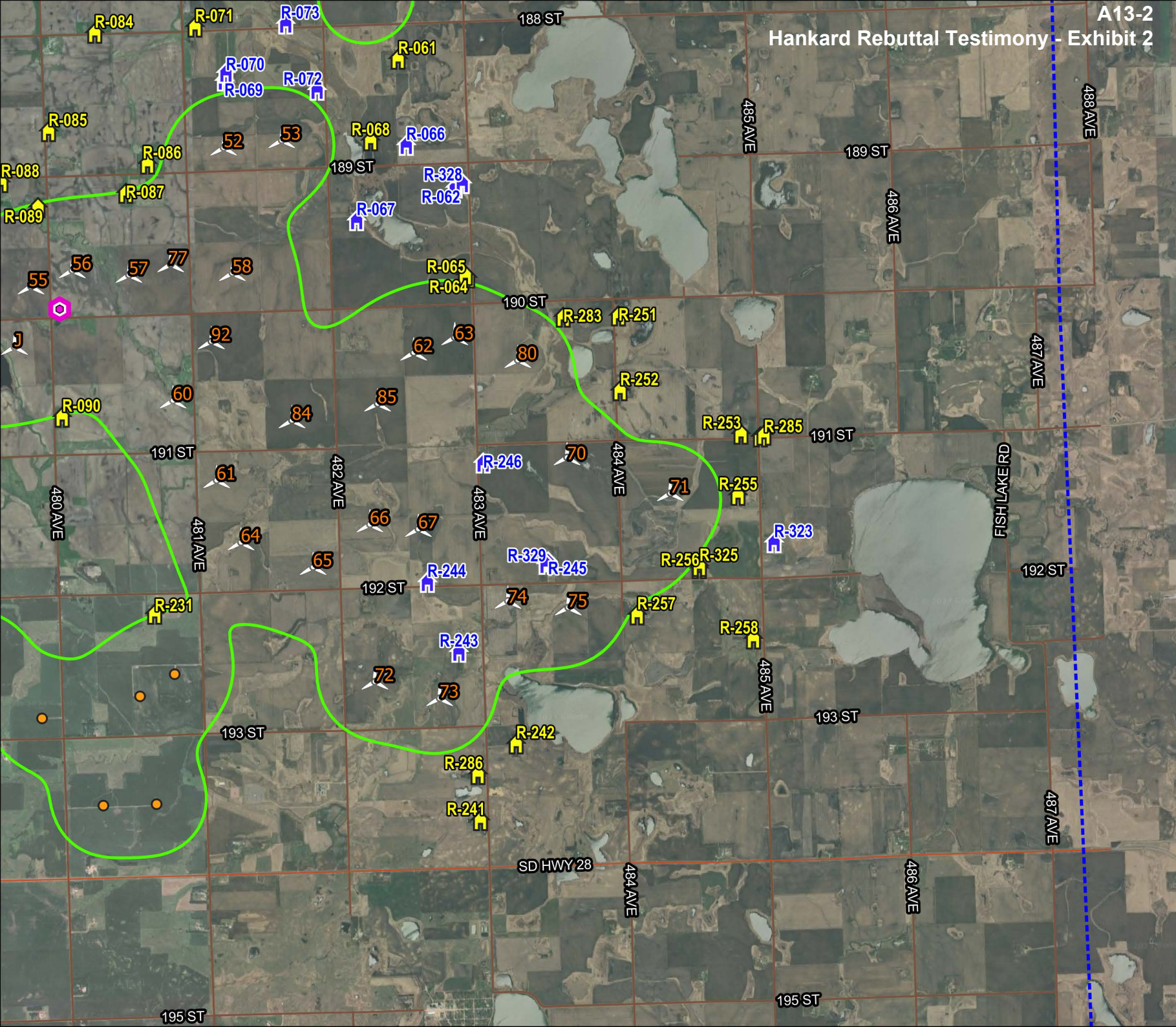
Receptors

-  Non-Participating
-  Participating

Predicted Noise Level Contours

-  45 dBA

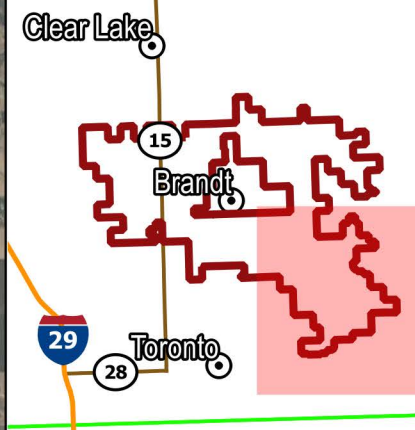
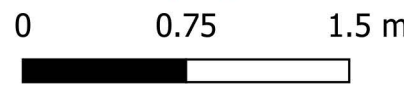


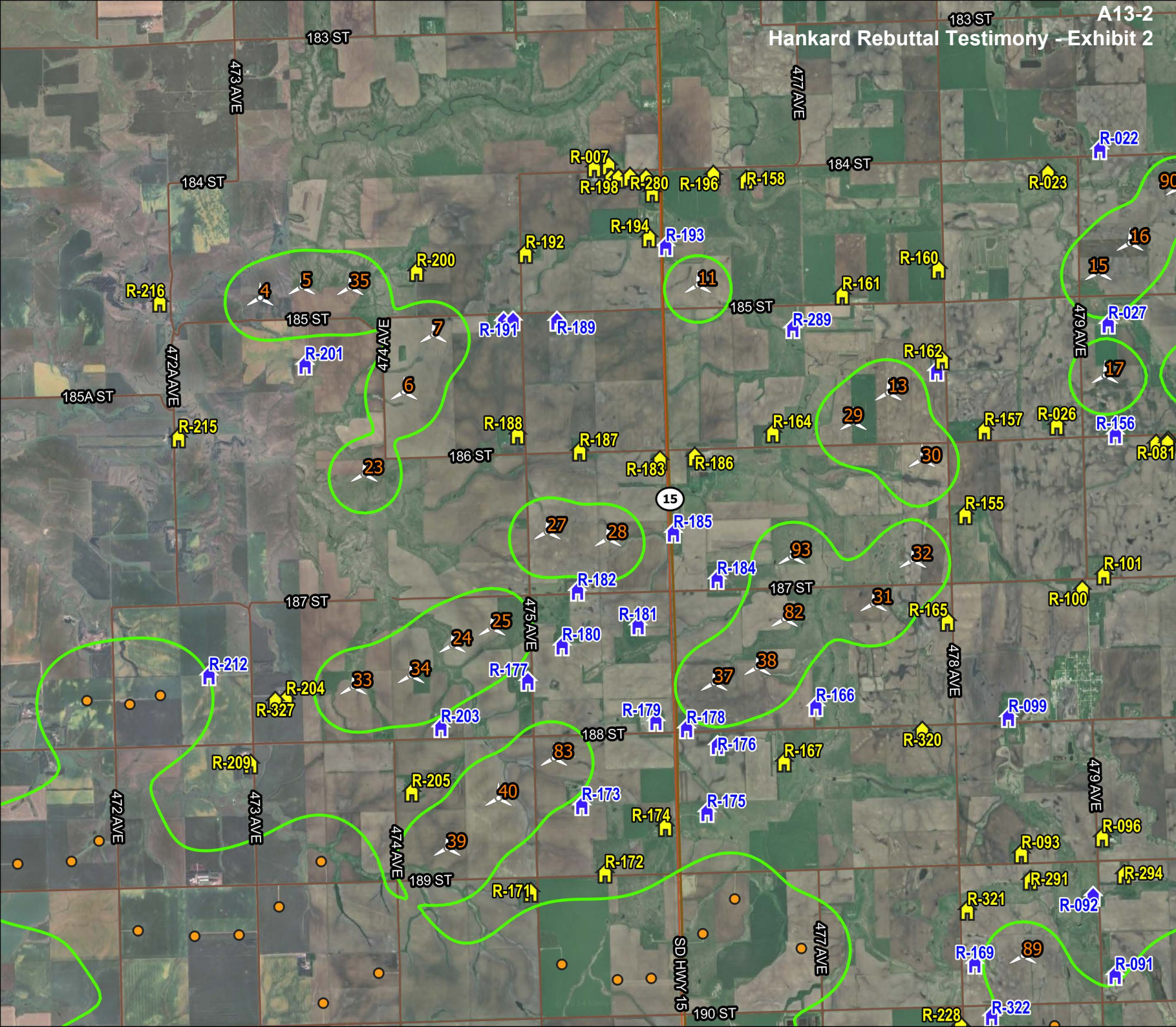


- South Deuel Wind Turbine
- GE 3.8-154 Turbines
- Collector Substation
- Project Area
- State Boundary
- County Boundary
- Tatanka Ridge Wind Turbine

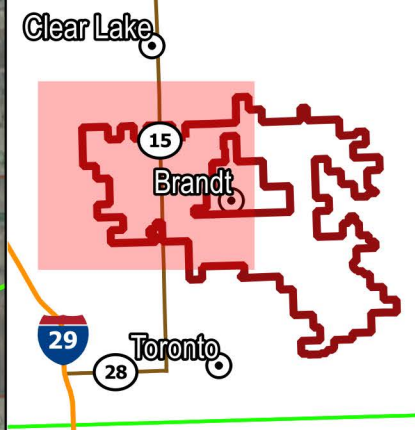
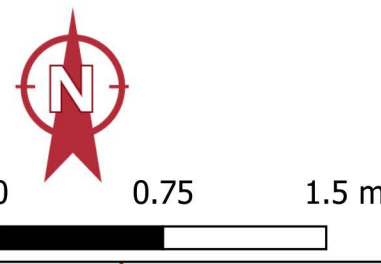
- Receptors**
- Non-Participating
 - Participating

- Predicted Noise Level Contours**
- 45 dBA

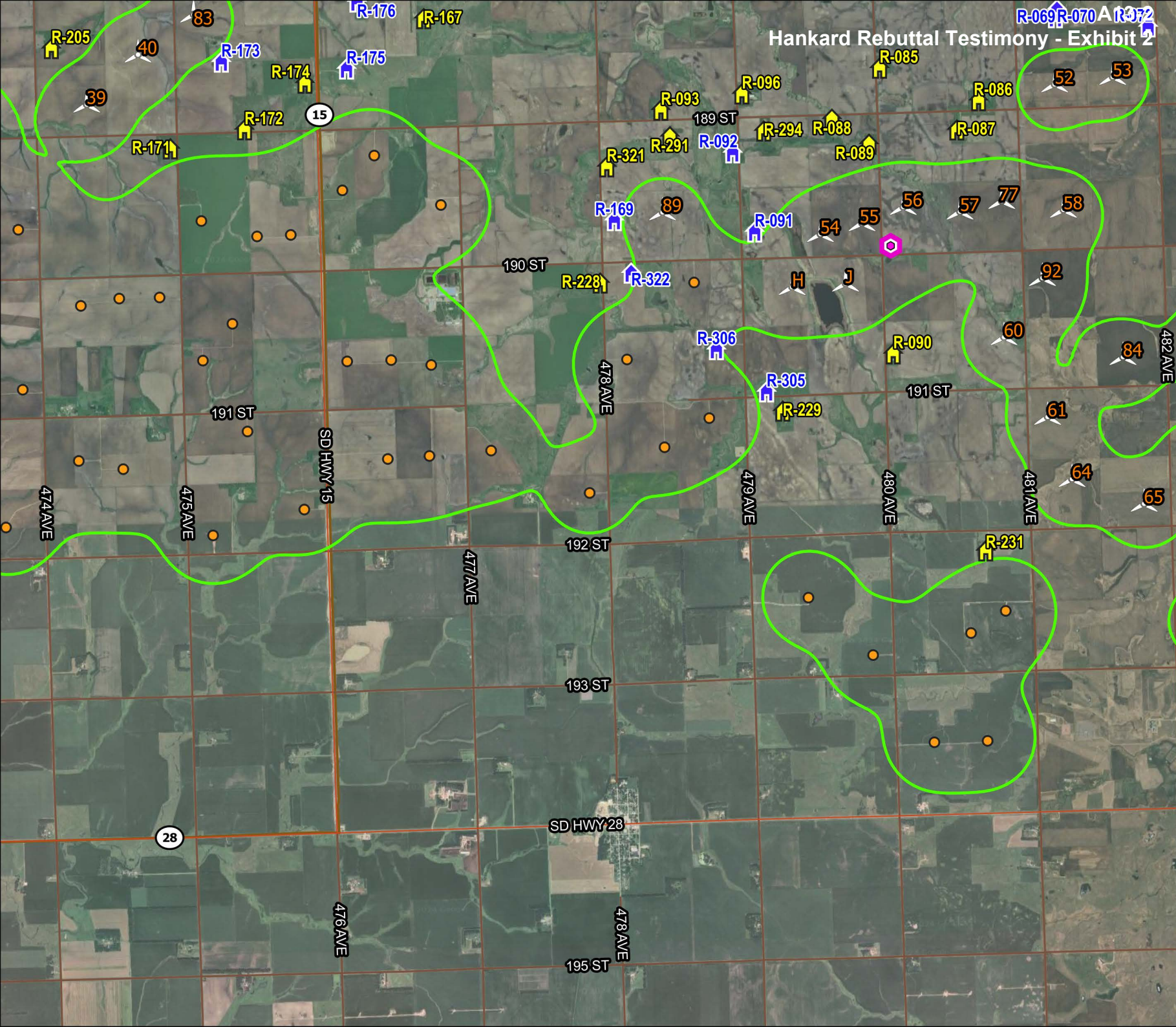














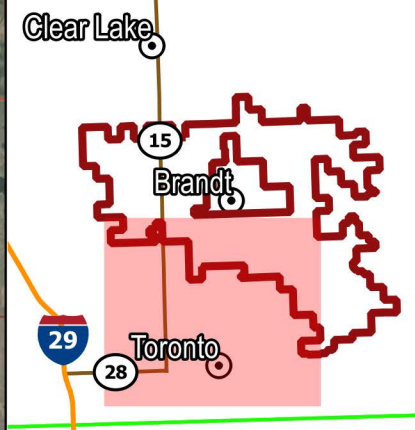
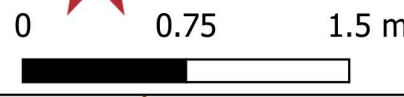
- South Deuel Wind Turbine
- SG 4.4-164 Turbines
- Collector Substation
- Project Area
- State Boundary
- County Boundary
- Tatanka Ridge Wind Turbine
- Receptors**
 - Non-Participating
 - Participating
- Predicted Noise Level Contours**
 - 45 dBA





Hankard Rebuttal Testimony - Exhibit 2



-  South Deuel Wind Turbine
 -  SG 4.4-164 Turbines
 -  Collector Substation
 -  Project Area
 -  State Boundary
 -  County Boundary
 -  Tatanka Ridge Wind Turbine
- Receptors**
-  Non-Participating
 -  Participating
- Predicted Noise Level Contours**
-  45 dBA



 South Deuel
Wind Turbine
SG 4.4-164 Turbines

 Collector Substation

 Project Area

 State Boundary

 County Boundary

 Tatanka Ridge
Wind Turbine

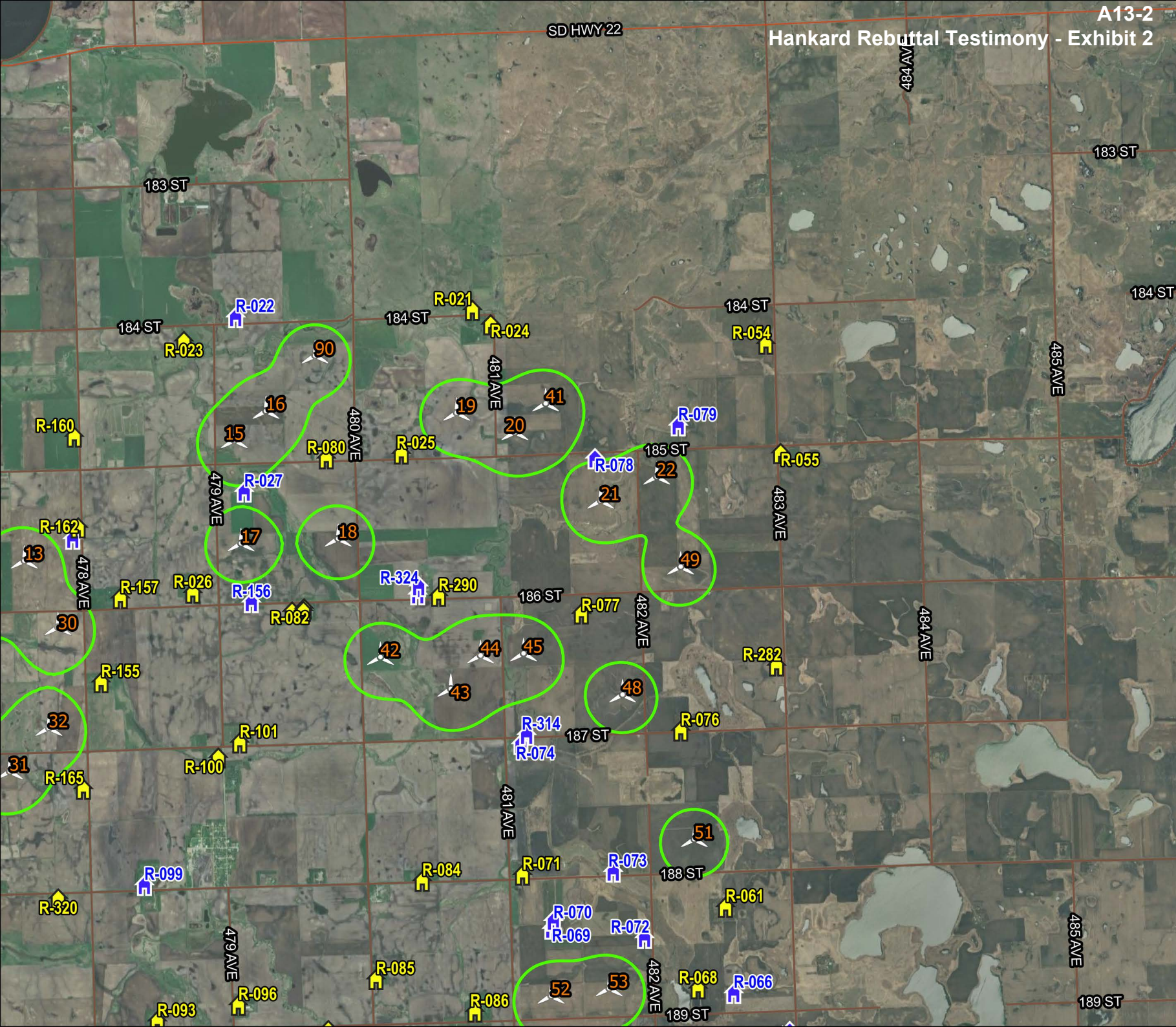
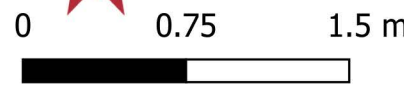
Receptors

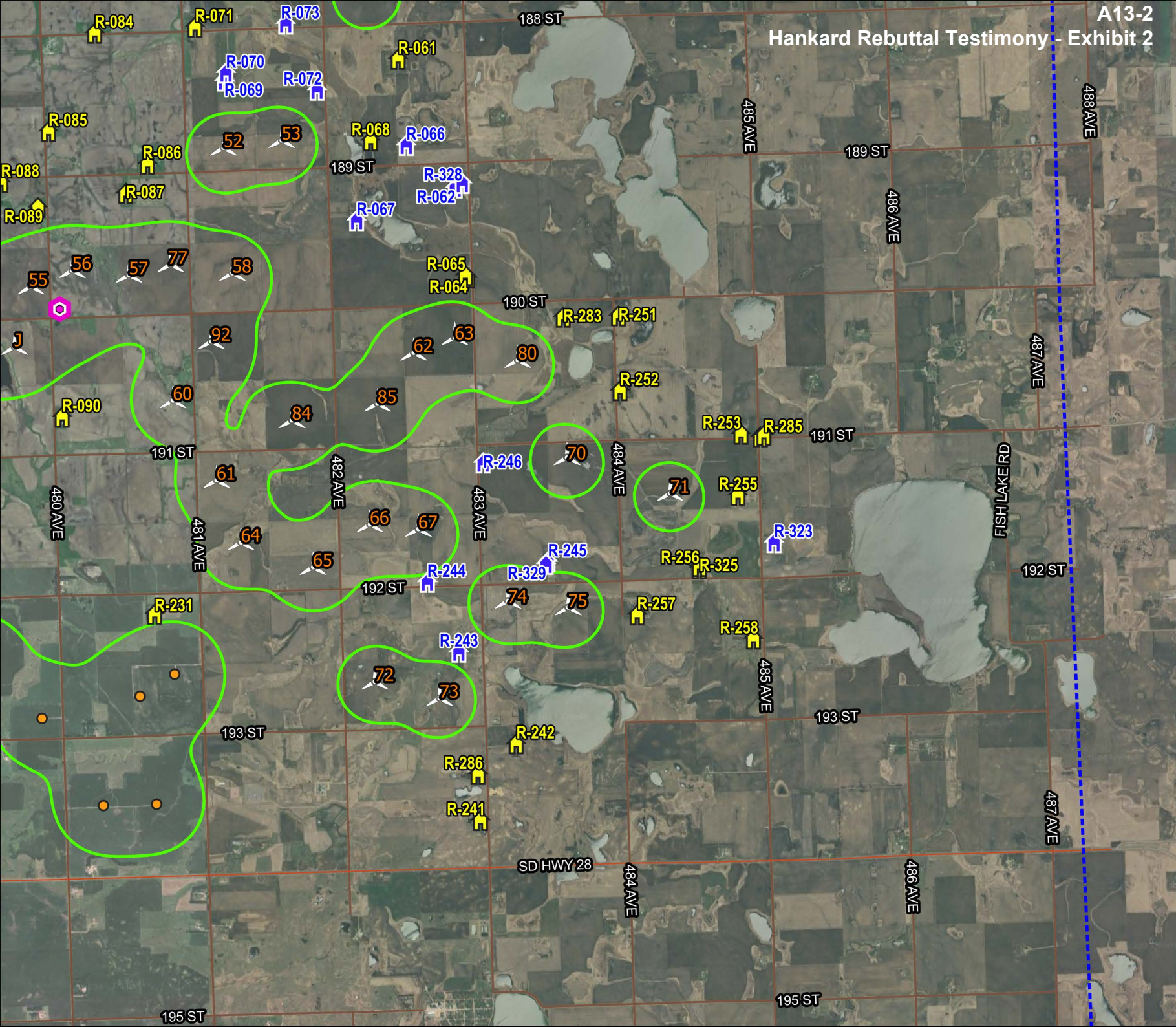
 Non-Participating

 Participating

**Predicted Noise
Level Contours**

 45 dBA

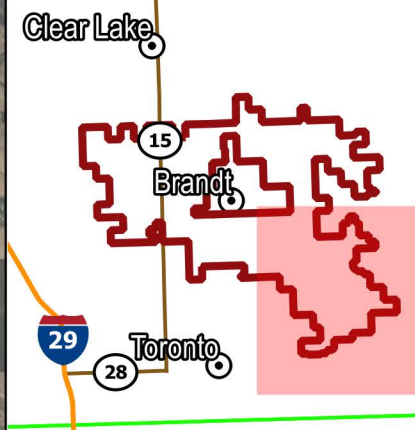
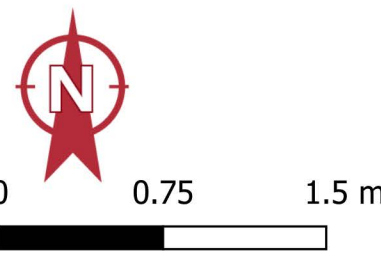




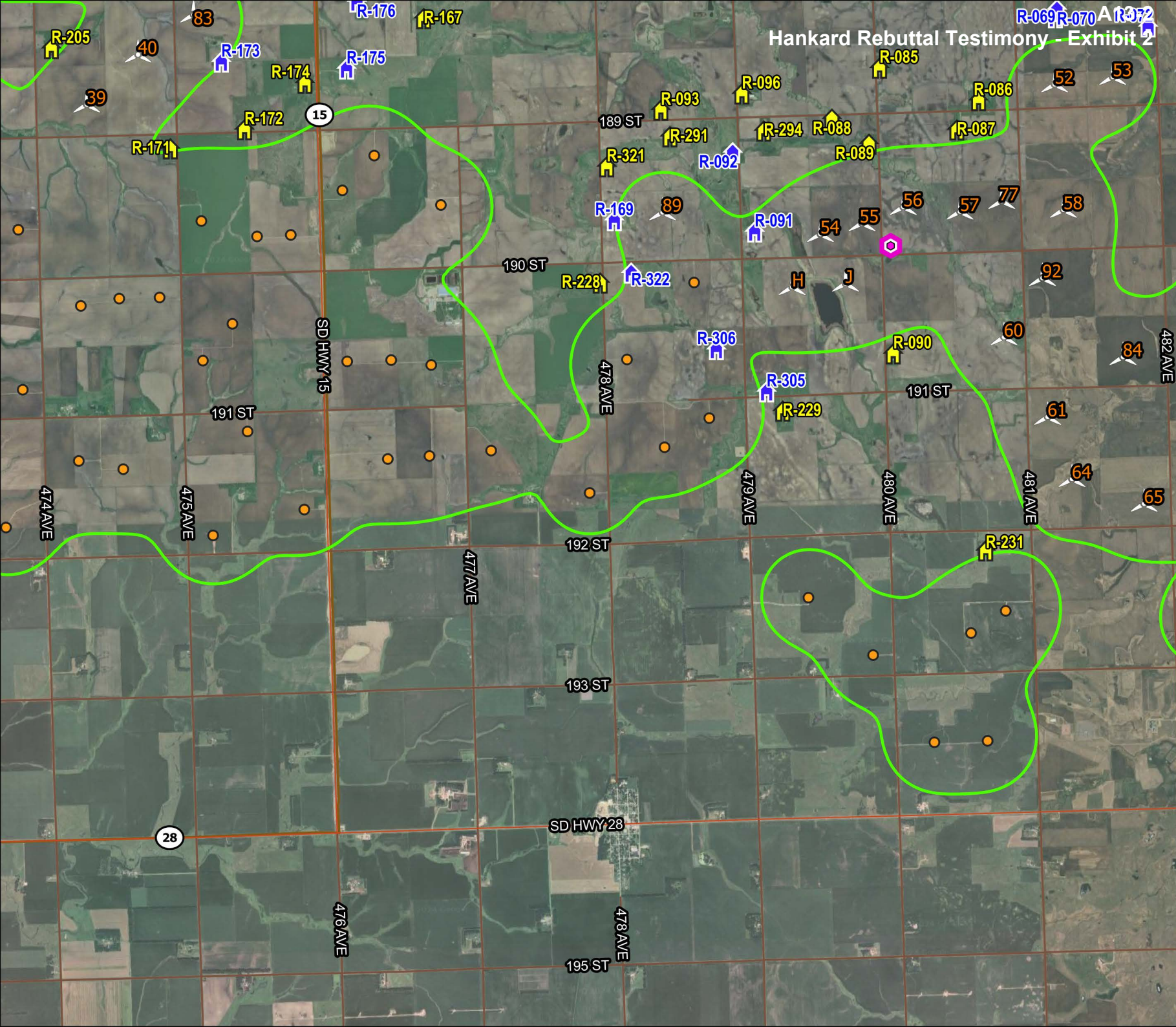
- South Deuel Wind Turbine
- SG 4.4-164 Turbines
- Collector Substation
- Project Area
- State Boundary
- County Boundary
- Tatanka Ridge Wind Turbine

- Receptors**
- Non-Participating
 - Participating

- Predicted Noise Level Contours**
- 45 dBA



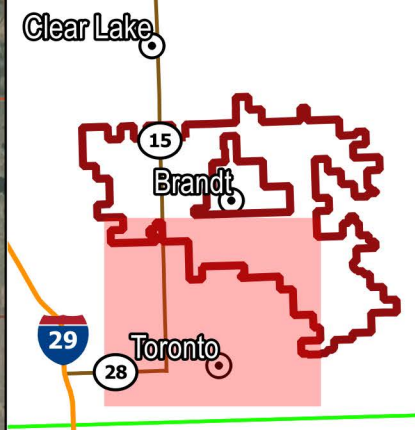
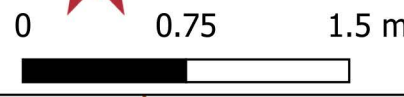
Hankard Rebuttal Testimony - Exhibit 2









- South Deuel Wind Turbine V163-4.5 Turbines
- Collector Substation
- Project Area
- State Boundary
- County Boundary
- Tatanka Ridge Wind Turbine

- Receptors**
- Non-Participating
 - Participating

- Predicted Noise Level Contours**
- 45 dBA



-  South Deuel Wind Turbine V163-4.5 Turbines
-  Collector Substation
-  Project Area
-  State Boundary
-  County Boundary
-  Tatanka Ridge Wind Turbine

Receptors

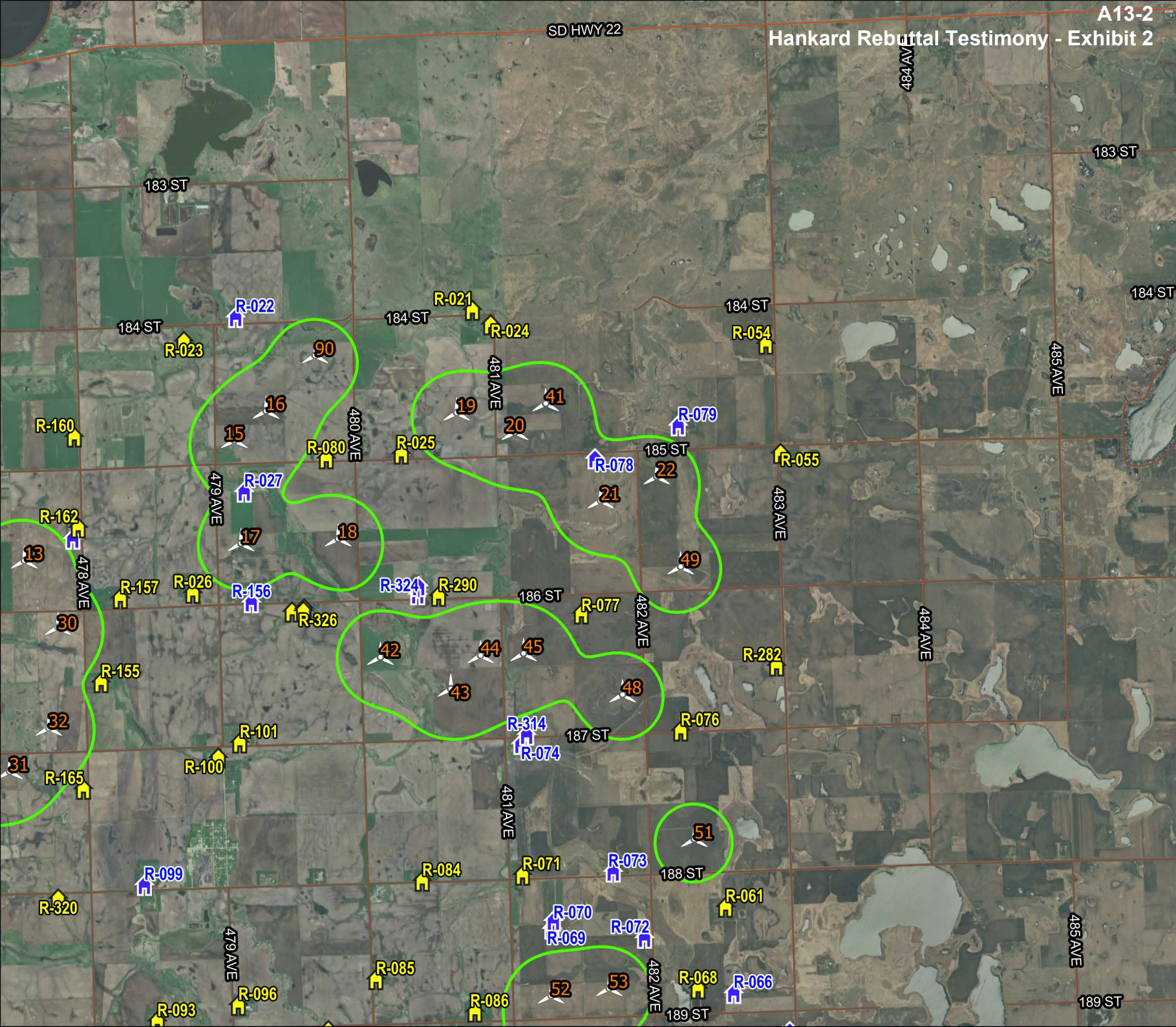
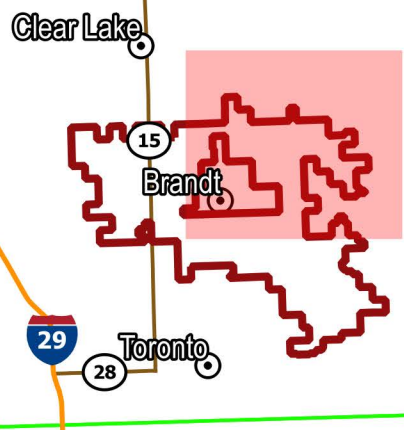
-  Non-Participating
-  Participating

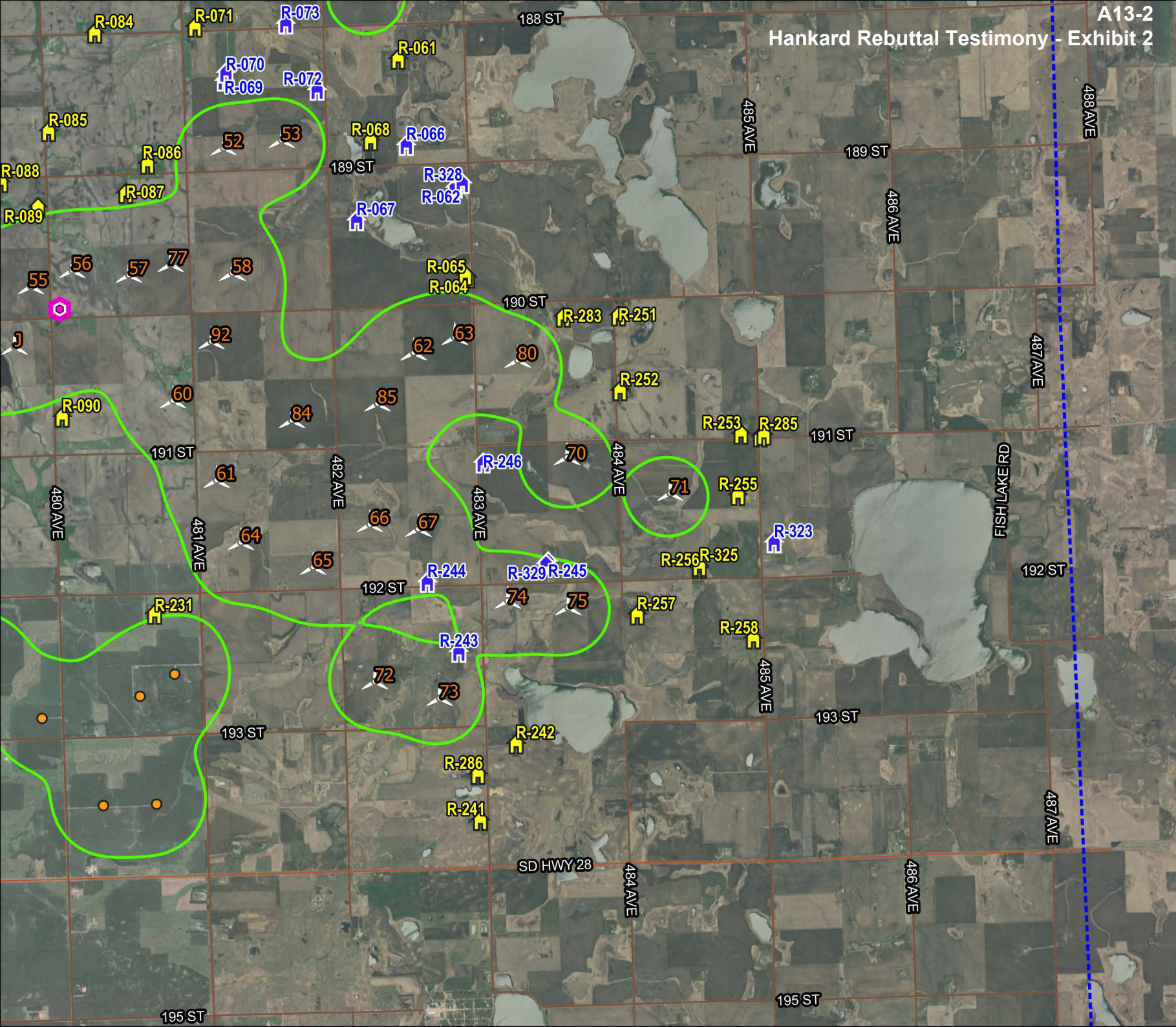
Predicted Noise Level Contours

-  45 dBA



0 0.75 1.5 mi





- South Deuel Wind Turbine
- V163-4.5 Turbines
- Collector Substation
- Project Area
- State Boundary
- County Boundary
- Tatanka Ridge Wind Turbine

- Receptors**
- Non-Participating
 - Participating

- Predicted Noise Level Contours**
- 45 dBA

