

Appendix B
Usable Area Slideshow



North Bend Wind Project

Useable Turbine Area

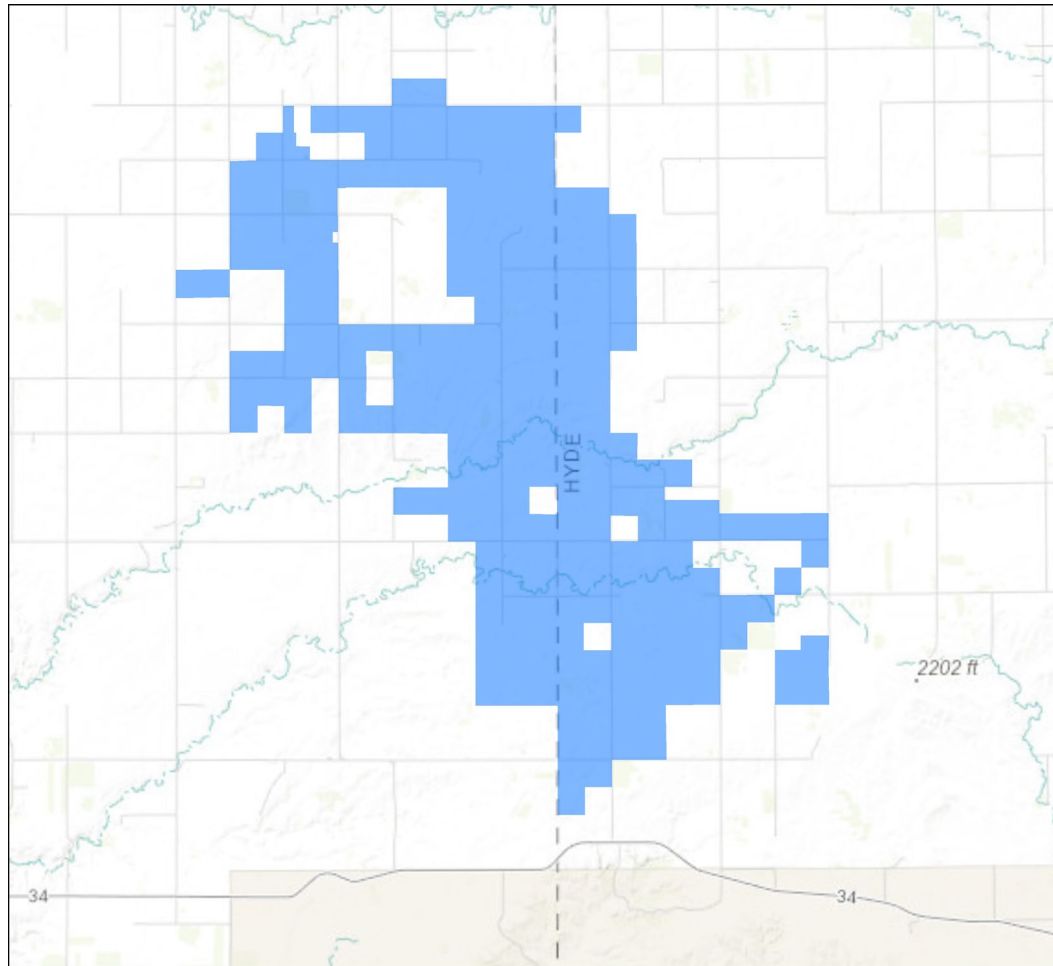
Casey Willis, Senior Advisor

June 2021

Useable Turbine Areas

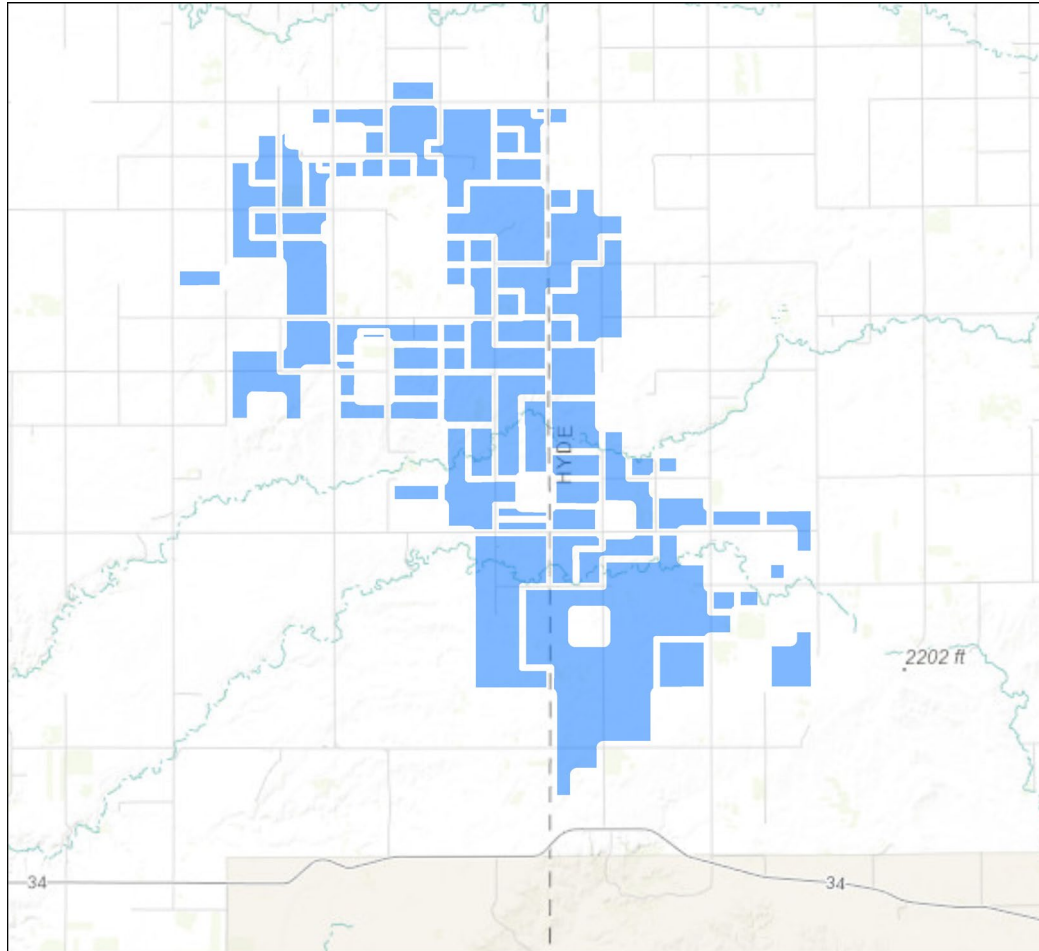
- The purpose of this slide deck is to provide a graphic example identifying useable turbine after various setbacks and constraints are included.
- The attached slides show the North Bend Wind Project areas under easement compared to after siting/setback constraints that are factored in to show where turbines can be placed.
- Only 21.1% of the original easement area can be used to site turbines.

Step 1 – Land Under Easement

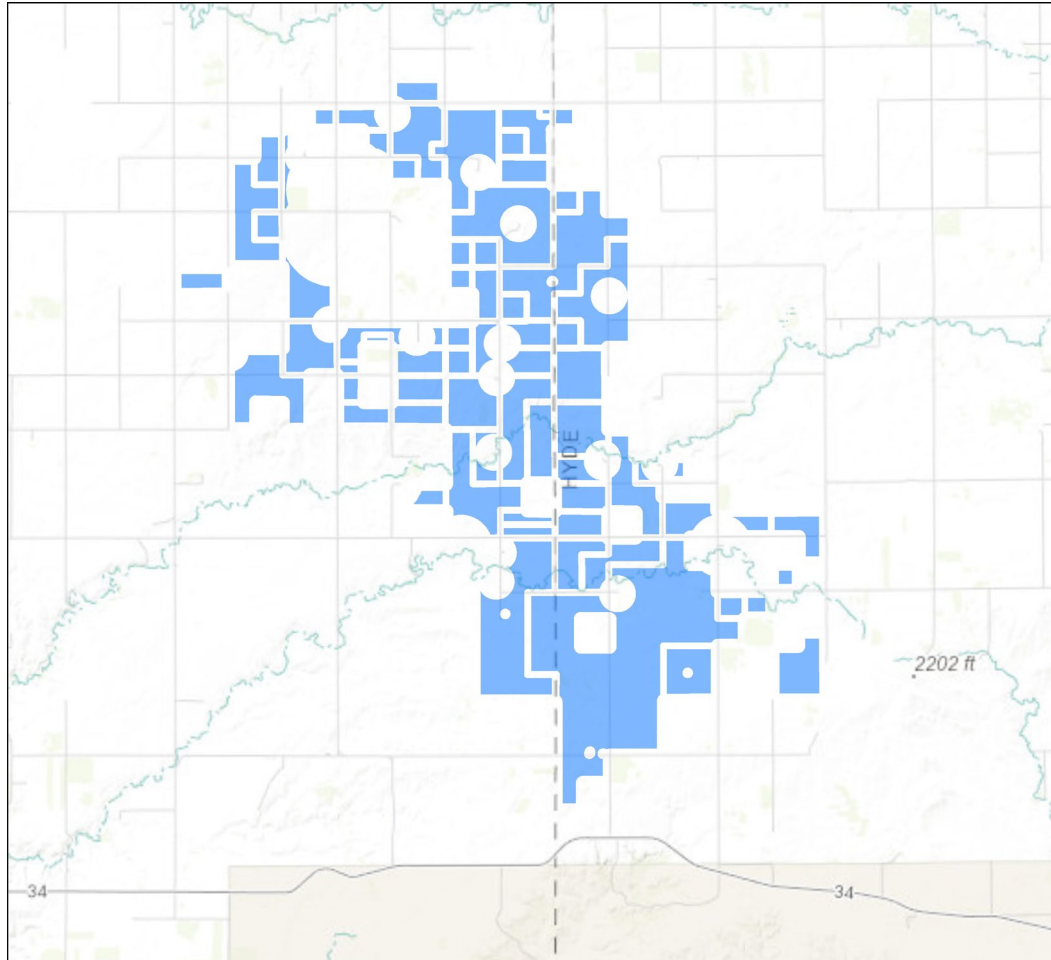


- Easement Area – Approximately 40,000 acres

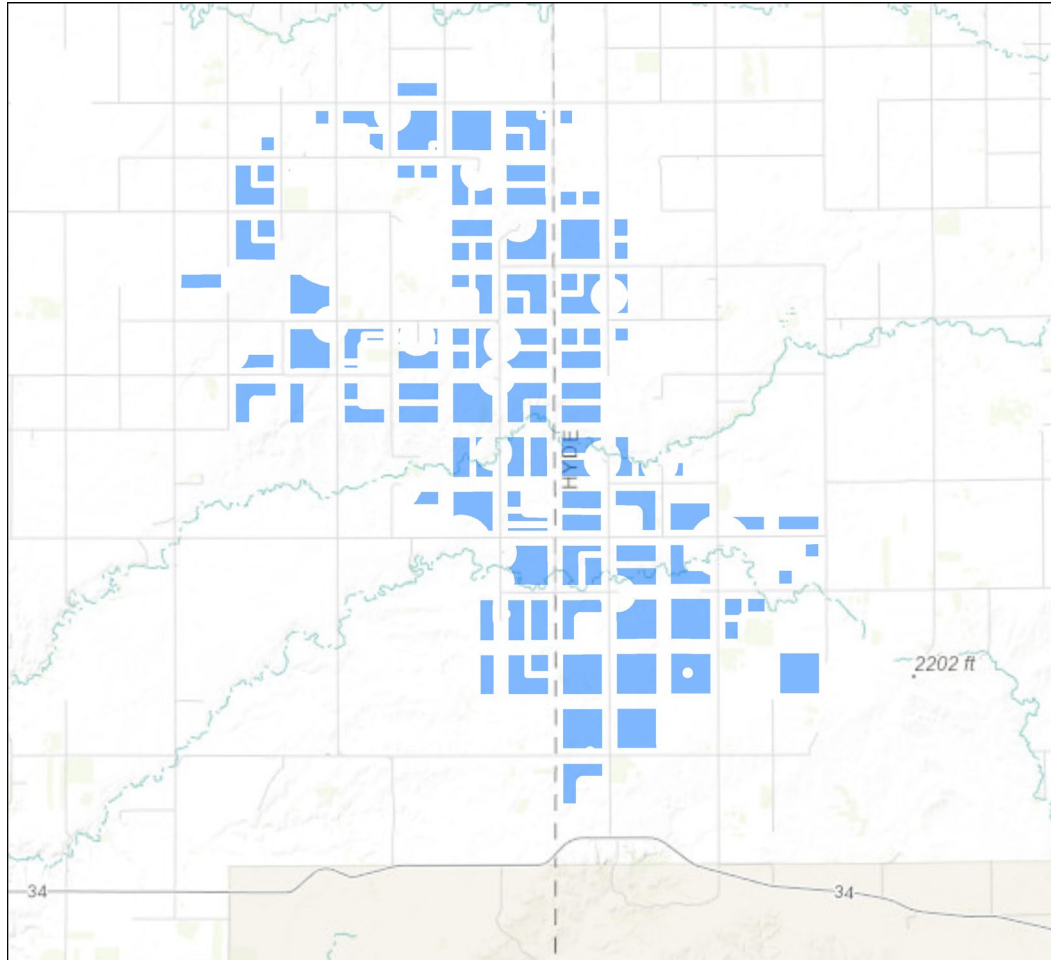
Step 2 – Property Line Setbacks



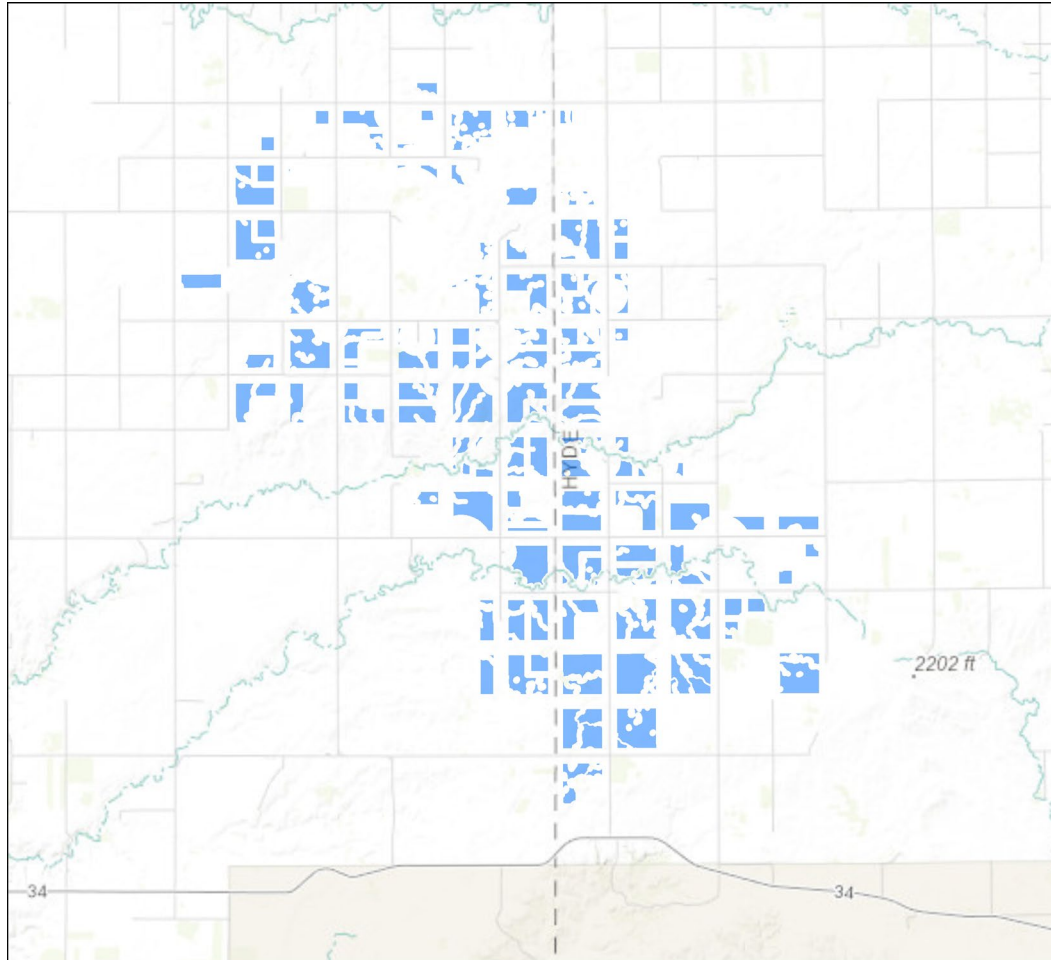
Step 3 – Setbacks from Homes



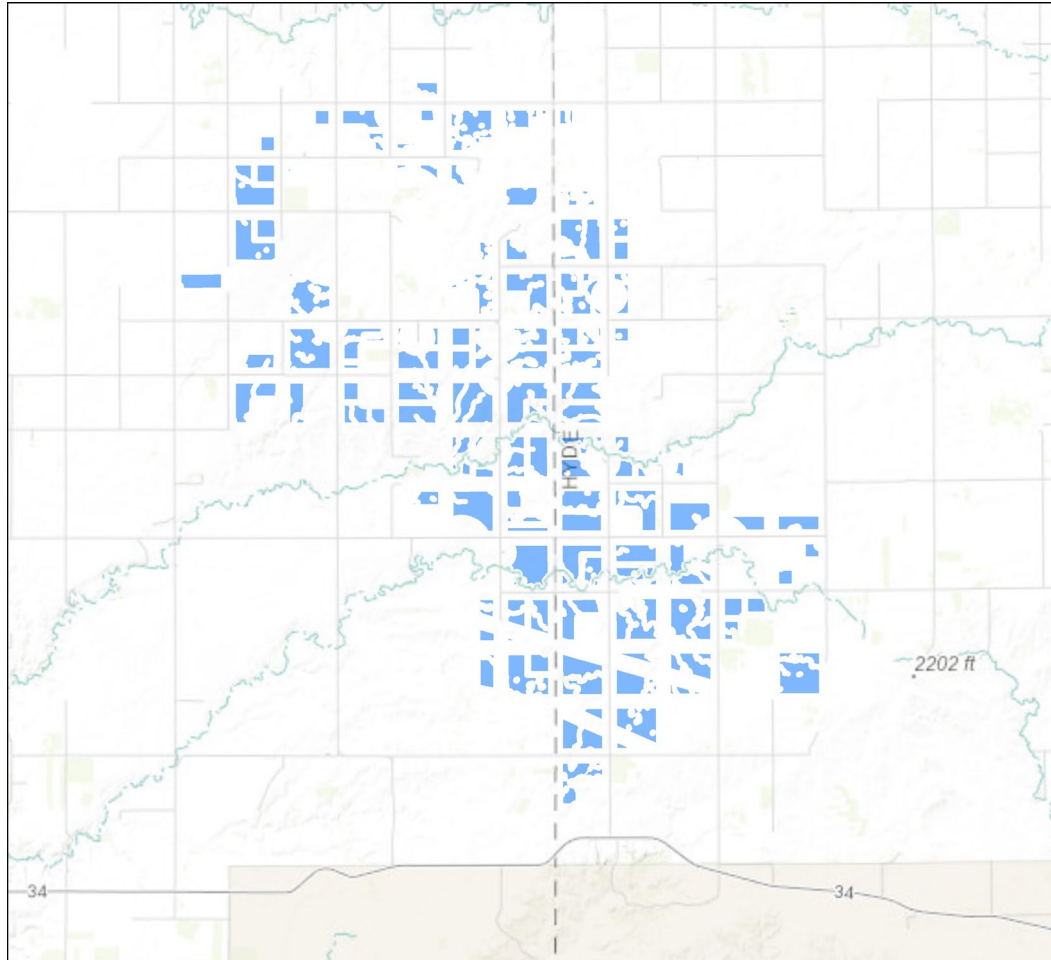
Step 4 – Road, Section Line and Highway Setbacks



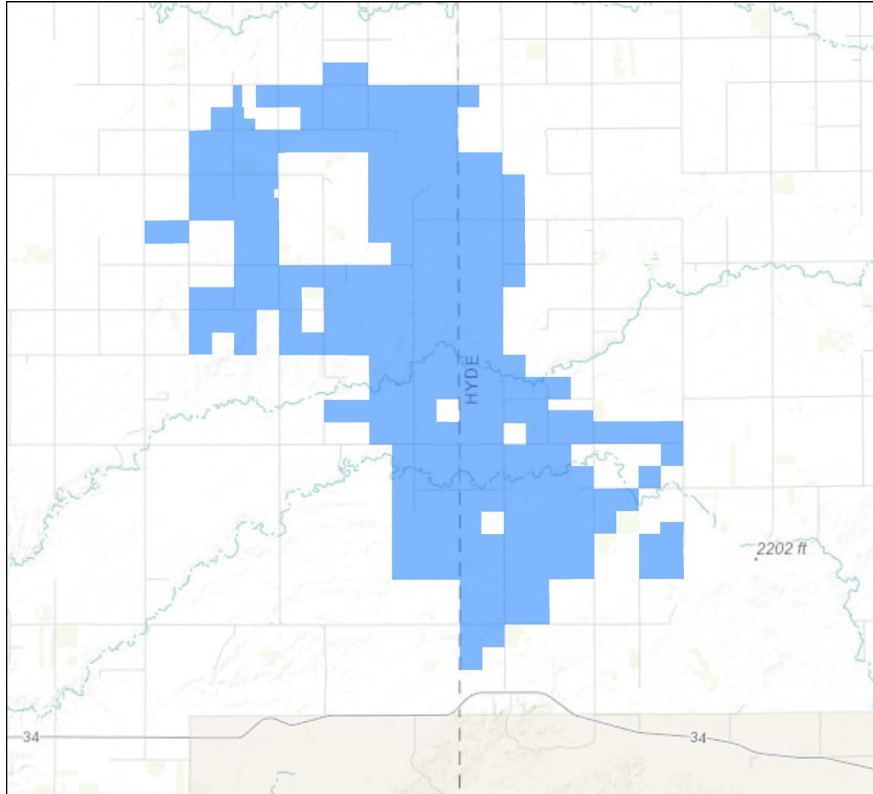
Step 5 – Environmental Constraints



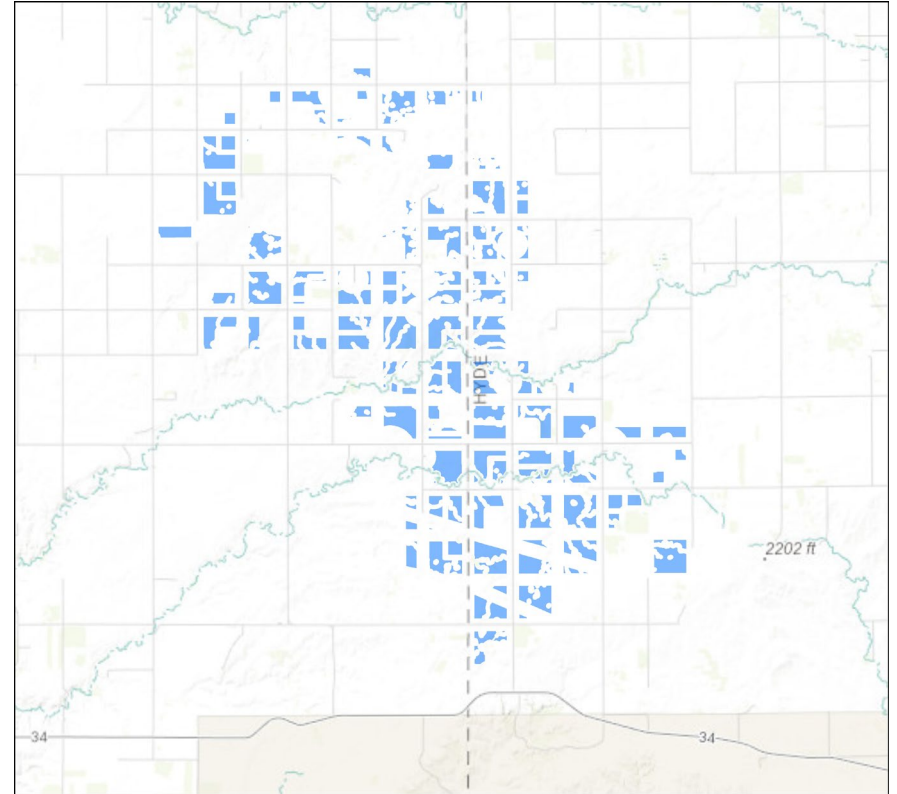
Step 6 – Existing Infrastructure



Final Useable Turbine Area



- Land Under Easement – 39,313 acres



- Final Useable Turbine Area – 8,305 acres