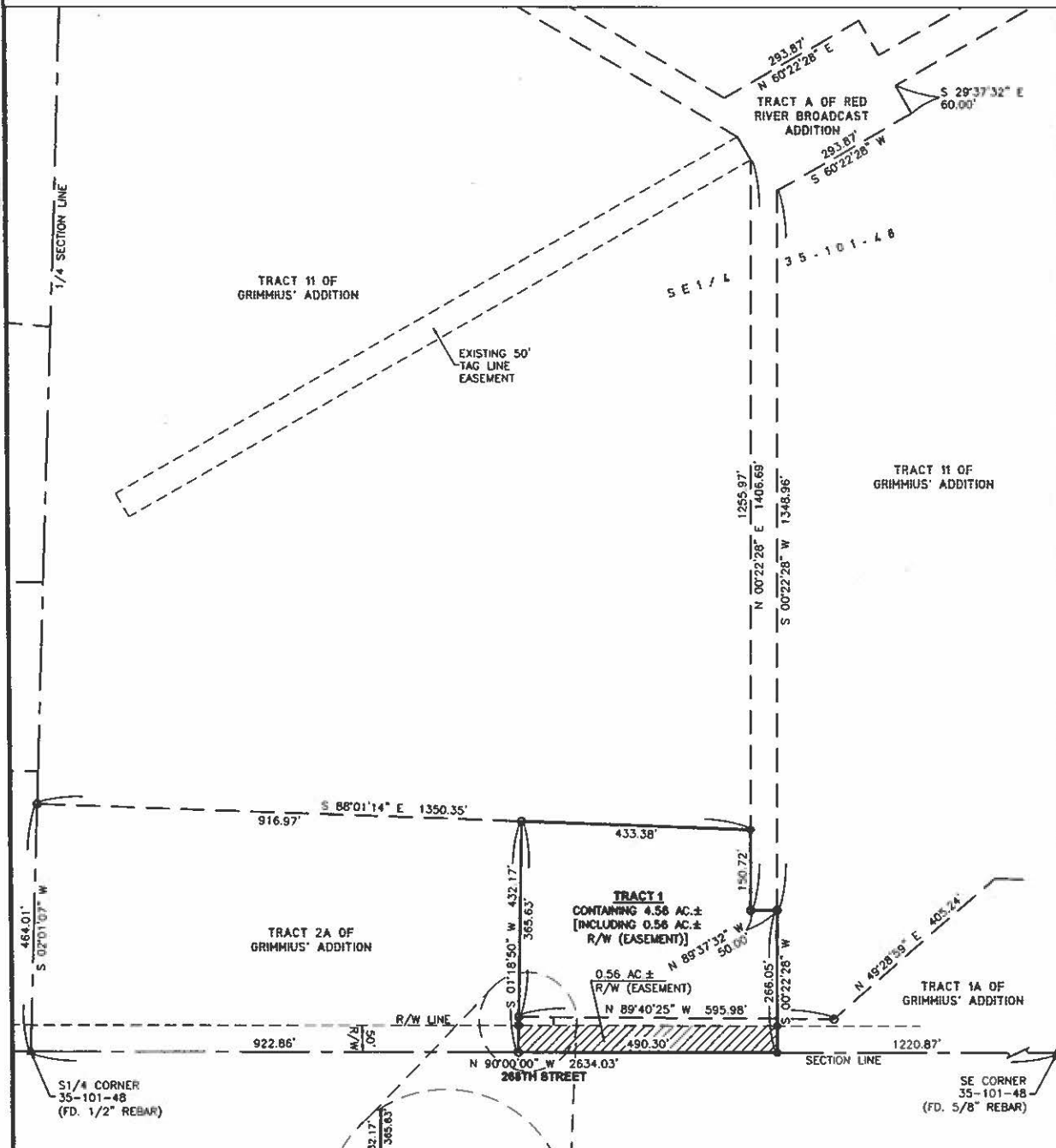


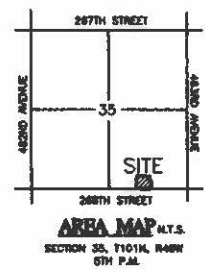
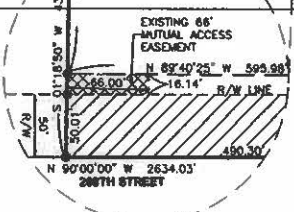
# PLAT OF TRACT 1 OF FUNKE'S ADDITION

AN ADDITION IN THE SOUTHEAST QUARTER OF SECTION 35, TOWNSHIP 101 NORTH, RANGE 48 WEST OF THE 5TH PRINCIPAL MERIDIAN, MINNEHAHA COUNTY, SOUTH DAKOTA.



**LEGEND:**

- SET 5/8" REBAR W/CAP #10141
- FOUND MONUMENT
- △ SECTION CORNER (AS NOTED)
- AC. ACRES
- R/W RIGHT-OF-WAY
- PREVIOUSLY PLATTED LINE
- - - RIGHT OF WAY LINE
- N.T.S. NOT TO SCALE



**NOTES:**  
 BASIS OF BEARINGS IS BASED ON THE PLAT OF GRIMMIUS' ADDITION  
 THIS PLAT WAS PREPARED WITHOUT THE BENEFIT OF A TITLE COMMITMENT.  
 EASEMENTS OF RECORD WERE NOT RESEARCHED AND ARE NOT SHOWN ON THE PLAT.

PREPARED BY:  
**Midwest Land Surveying, Inc.**  
 Land Surveying and GPS Consulting  
 211 E. 14th Street Suite 100  
 Sioux Falls, South Dakota 57104  
 Phone: (605) 339-8901 FAX: (605) 274-8981

