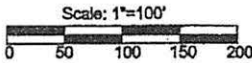
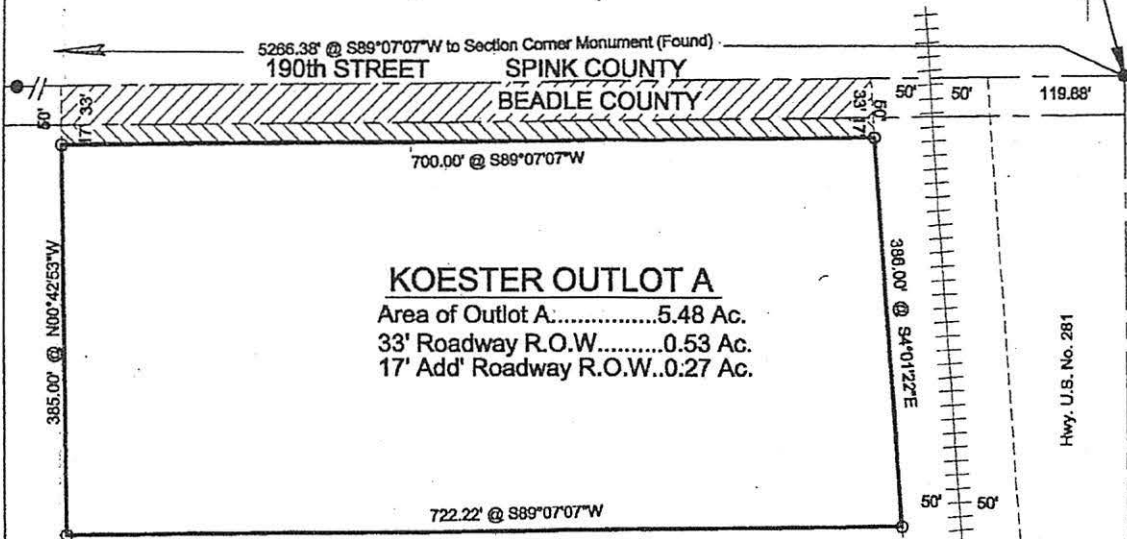


**KOESTER OUTLOT A IN  
NE1/4 SEC. 3-T113N-R64W of the 5th P.M.  
BEADLE COUNTY, SOUTH DAKOTA**



*Francis E. Brink*  
12-8-2016

**LEGEND**

- Monuments Found.
- Monuments Set  
5/8" Ø rebar w/cap SD1641
- ▨ Statutory Section Line Easement
- ▩ Additional R.O.W Dedication

**HIGHWAY AUTHORITY CERTIFICATE**

The location of existing accesses for Outlot A are approved.

By: \_\_\_\_\_ Date \_\_\_\_\_  
For the Bonilla Township Highway Department

Prepared By: Francis E. Brink, P.E., L.S., SD1641  
816-4th Street North, Aberdeen, SD 57401  
Tel. (605) 225-9181



KOESTER OUTLOT A IN NE1/4 SEC. 3-T113N-R64W of 5<sup>th</sup> P.M., BEADLE COUNTY SOUTH DAKOTA

OWNER'S CERTIFICATE

We, Douglas Boomsma and Peggy Boomsma, Husband and Wife, do hereby certify that we the owners of the NE1/4 of Sec. 3-T113N-R64W of the 5<sup>th</sup> P.M., Beadle County, South Dakota, except railways and other lands deeded, and, we did authorize a survey and plat of a portion of said NE1/4 of Sec. 3-T113N-R64W of 5<sup>th</sup> P.M., Beadle County, South Dakota, which shall hereafter be known as "KOESTER OUTLOT A IN NE1/4 SEC. 3-T113N-R64W of the 5th P.M., BEADLE COUNTY, SOUTH DAKOTA", as shown on the attached plat, and that development of this land shall conform to all existing applicable zoning, subdivision and sediment control regulations. Lands shown as dedicated for highways are dedicated to the public for the perpetual use as highways.

Douglas Boomsma      12/27/16      Peggy Boomsma      12/27/16  
Douglas Boomsma      Date      Peggy Boomsma      Date

ACKNOWLEDGEMENT OF OWNER

STATE OF SOUTH DAKOTA )  
COUNTY OF BEADLE Spink )

On this, the 27<sup>th</sup> day of December, 2016, before me, Jannie R. Rude, a Notary Public, appeared Douglas Boomsma and Peggy Boomsma, personally known to me or satisfactorily proven to me to be the individuals named above and signed the above OWNER'S CERTIFICATE for the purposes therein contained.

My Commission Expires: 4-8-2022      Jannie R. Rude  
Notary Public, State of South Dakota

SURVEYOR'S CERTIFICATE

I, Francis E. Brink, Licensed Land Surveyor, do hereby certify that at the request of the Owners shown above, have surveyed and platted "KOESTER OUTLOT A IN NE1/4 SEC. 3-T113N-R64W of the 5th P.M., BEADLE COUNTY, SOUTH DAKOTA" as shown on the attached plat; have shown monuments found and set thereon, and to the best of my knowledge, said survey and plat are true and correct.

Signed this 27<sup>th</sup> day of December, 2016.      Francis E. Brink  
South Dakota Licensed Land Surveyor No. SD1641

COUNTY PLANNING COMMISSION CERTIFICATE

I hereby certify the following is a correct copy of the resolution duly passed by the County Planning Commission of Beadle County, South Dakota, at a meeting held on the \_\_\_ day of \_\_\_\_\_, 20\_\_.

Secretary of County Planning Commission, Beadle County, SD

"Be it resolved by the Beadle County Planning Commission, Beadle County, South Dakota, that the plat showing "KOESTER OUTLOT A IN NE1/4 SEC. 3-T113N-R64W of the 5th P.M., BEADLE COUNTY, SOUTH DAKOTA", having been examined, is hereby approved in accordance with the provisions of SDCLS of 1967, Chapter 11-6, and any amendments thereof.

COUNTY COMMISSION APPROVAL

I hereby certify that the following is a correct copy of the resolution duly passed by the County Commission of Beadle County, South Dakota, at a meeting held on the \_\_\_ day of \_\_\_\_\_, 20\_\_.

County Auditor, Beadle County, South Dakota

"Be it resolved by the County Commission of Beadle County, South Dakota, that the plat showing "KOESTER OUTLOT A IN NE1/4 SEC. 3-T113N-R64W of the 5th P.M., BEADLE COUNTY, SOUTH DAKOTA", having been examined, is hereby approved in accordance with the provisions of SDCL of 1967, Chapter 11-3, and any amendments thereof.

TREASURER'S CERTIFICATE

I hereby certify that all taxes which are liens upon any of the lands included in the above-plat are shown by the records of my office to be fully paid.

Signed this \_\_\_ day of \_\_\_\_\_, 20\_\_.

County Treasurer, Beadle County, South Dakota

DIRECTOR OF EQUALIZATION'S CERTIFICATION

I hereby certify that I have received a copy of this plat this \_\_\_ day of \_\_\_\_\_, 20\_\_.

Director of Equalization, Beadle County, South Dakota

REGISTER OF DEED'S CERTIFICATION

Filed for record this \_\_\_ day of \_\_\_\_\_, 20\_\_, at \_\_\_ o'clock \_\_\_ M., and duly recorded in Book of Plats No. \_\_\_\_\_.

Register of Deeds, Beadle County, South Dakota