

**Appendix J**  
**Agency Letters**

---

**Agency Consultation Letters Submitted**

<b>Agency</b>	<b>Date Submitted</b>	<b>Response Date</b>
U.S. Department of Agriculture Natural Resource Conservation Service	2/24/2020	Pending
U.S. Department of Commerce – National Telecommunications and Information Administration	2/24/2020	Pending
U.S. Army Corps of Engineers State Regulatory Program Manager Pierre Regulatory Office	2/24/2020	Pending
USFWS South Dakota Ecological Services Field Office	2/24/2020	Pending
U.S. Fish and Wildlife Service Huron Wetland Management District	2/24/2020	Pending
South Dakota Department of Environment and Natural Resources Division of Environmental Services	2/24/2020	Pending
South Dakota Department of Game, Fish and Parks, Environmental Review Coordinator	2/24/2020	Pending
South Dakota Aeronautics Commission, Office of Air, Rail and Transit, Department of Transportation	2/24/2020	Pending
South Dakota Department of Transportation, Office of Aeronautics Services, Air, Rail & Transit Program Manager	2/24/2020	Pending
South Dakota State Historical Society	2/24/2020	Pending



February 24, 2020

Mr. Michael Larson  
U.S. Department of Agriculture  
Natural Resource Conservation Service  
218 Iowa Street  
Highmore, SD 57345

**Subject: Meridian Wind Project Energy Facility Permit Application for the Proposed 175 MW Wind Energy Facility and 345 kV Transmission Line in Hyde County, South Dakota**

Dear Mr. Larson:

Meridian Wind Project, LLC (Meridian Wind), a subsidiary of ENGIE North America, Inc. (ENGIE), is currently preparing to submit an application to the South Dakota Public Utilities Commission for an Energy Facility Permit for the Meridian Wind Project (Project), in compliance with Administrative Rules of South Dakota 20:10:22 and South Dakota Codified Law Ch. 49-41B. The total installed capacity of the wind energy facility will not exceed 175 megawatts (MW) and the 345 kilovolt (kV) transmission line will extend approximately 8.9 miles from east to west. Both the wind energy facility and the transmission line are being permitted at the state and local level.

The Project is located entirely within Hyde County, South Dakota, in the townships of Van Order, Eagle, Chappelle, Holabird, and Highmore as shown in Table 1 and the attached Figure 1. The Project boundary covers approximately 15,043 acres (Project area) and will consist of up to 77 wind turbines, electric collector lines, a central collector substation, access roads connecting to each turbine, and meteorological towers.

**Table 1. Project Location**

County Name	Township Name	Township	Range	Sections
Hyde	Van Order	111N	71W	1-13, 17-20
Hyde	Eagle	111N	72W	1-3, 7-13, 18, 24
Hyde	Chappelle	111N	73W	12, 13
Hyde	Holabird	112N	71W	27-29, 31-35
Hyde	Highmore	112N	72W	36

The Project will interconnect to the high-voltage transmission grid via a 345 kV interconnection switch station (Chapelle Station) located at the western end of the Project's transmission line. Chappelle Station will be owned and operated by Basin Electric Power Cooperative as part of the Triple H Wind Project. The Triple H Wind Project is located immediately west of State Highway 47 and will be built and operated by Meridian Wind's parent company by Summer 2020. The Triple H Wind Project was granted a permit to construct by the SDPUC on July 24, 2019 under EL19-007. In addition to utilizing Chapelle Station, Meridian Wind anticipates sharing the operations and maintenance facility and an Aircraft Detection Lighting System with the Triple H Wind Project.

The purpose of this letter is to introduce the Project and obtain input from the U.S. Department of Agriculture Natural Resource Conservation Service regarding any potential concerns or issues that may exist within the Project area listed above that would influence a decision regarding the use of the land. The Project would be designed to avoid resources such as wetlands, surface waters, sensitive habitats, protected species, and historic or cultural areas to the extent possible. Potential impacts to soil and surface water resources would be minimized or avoided by using erosion and sedimentation control best

ENGIE North America  
3760 State Street, Suite 200  
Santa Barbara, CA 93105



management practices during construction. Figure 2 depicts soils mapped within the Project area.

If you require any further information, such as shapefiles or other maps, please do not hesitate to contact me. Any resulting information will be used to help guide Project development in a manner that identifies and avoids impacts to sensitive resources where practicable.

If you have any questions regarding the information presented in this letter, please contact me at ENGIE, 805-569-6185, or at [Casey.Willis@engie.com](mailto:Casey.Willis@engie.com). Thank you for your assistance regarding the Project.

Respectfully submitted,

A handwritten signature in blue ink, appearing to read "Casey Willis", is positioned above the printed name.

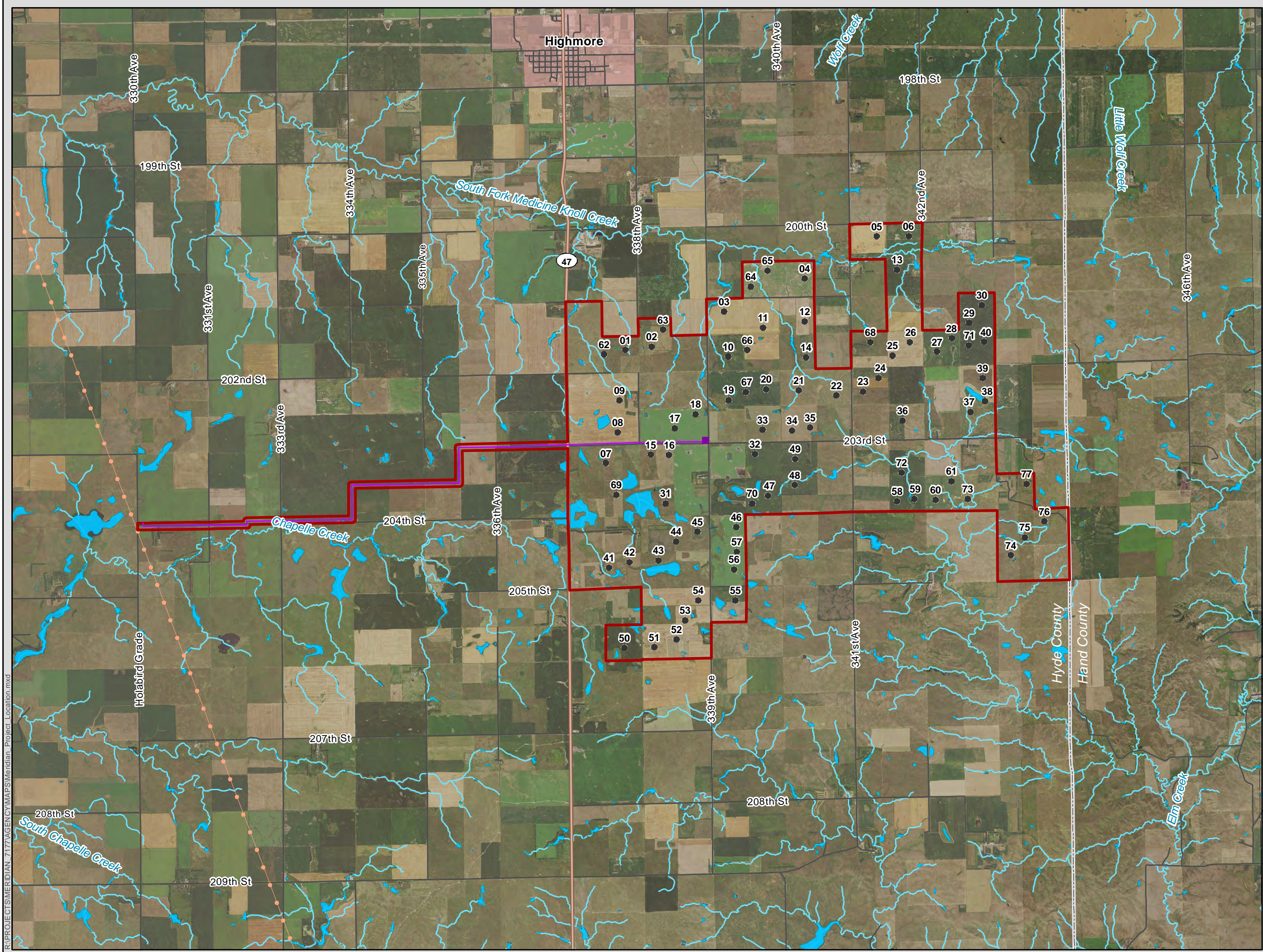
**Casey Willis**  
3760 State Street, Suite 200  
Santa Barbara, CA 93105

**P:** 805-569-6185

**E:** [Casey.Willis@engie.com](mailto:Casey.Willis@engie.com)

cc:  
Manuela Elizondo – Tetra Tech, Inc.  
Shaun Brooks – Tetra Tech, Inc.



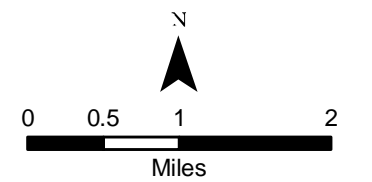


## Meridian Wind Project

### Project Location

Hyde County, South Dakota

- Project Area
- Proposed Turbine
- Proposed Transmission Line
- Potential Collection Substation Location
- Municipal Boundary
- County Boundary
- State Highway
- Local Road
- Existing 345 kV Transmission Line
- NHD Intermittent Stream
- NHD Waterbody





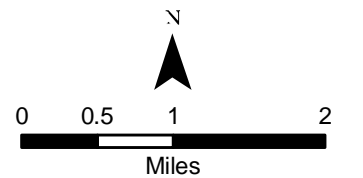


## Meridian Wind Project

### Project Location and NRCS Soils

Hyde County, South Dakota

- Project Area
- Proposed Turbine
- Proposed Transmission Line
- Potential Collection Substation Location
- Municipal Boundary
- County Boundary
- State Highway
- Local Road
- Existing 345 kV Transmission Line



#### Soil Unit: Soil Name

BkF: Betts-Java loams, 20 to 40 percent slopes	HdA: Highmore-DeGrey silt loams, 0 to 2 percent slopes	Os: Onita-Hoven silt loams
CrA: Cavo-Jerauld loams, 0 to 4 percent slopes	HdB: Highmore-DeGrey silt loams, 2 to 6 percent slopes	PgD: Peno-Gettys clay loams, 9 to 15 percent slopes
Cs: Cavo-Stickney loams	HeA: Highmore silt loam, 0 to 2 percent slopes	Pk: Plankinton silt loam
Df: DeGrey-Walke silt loams, 0 to 2 percent slopes	HeB: Highmore silt loam, 2 to 6 percent slopes	RcA: Raber-Cavo loams, 0 to 2 percent slopes
Du: Durrstein-Egas complex	Ho: Hoven silt loam, 0 to 1 percent slopes	RcB: Raber-Cavo loams, 2 to 6 percent slopes
EpC: Eakin-Peno complex, 6 to 9 percent slopes	JaC: Java, stony-Glenham-Prosper loams, 1 to 9 percent slopes	RpB: Raber-Peno loams, 2 to 6 percent slopes
ErA: Eakin-Raber complex, 0 to 2 percent slopes	JbD: Java-Betts loams, 6 to 15 percent slopes	RpC: Raber-Peno loams, 6 to 9 percent slopes
ErB: Eakin-Raber complex, 2 to 6 percent slopes	JgC: Java-Glenham loams, 6 to 9 percent slopes	StA: Stickney-Java loams, 0 to 4 percent slopes
GmB: Glenham-Java-Prosper loams, 1 to 6 percent slopes	Ma: Macken silty clay loam, 0 to 1 percent slopes	Te: Tetonka silt loam, 0 to 1 percent slopes
GrA: Glenham-Prosper loams, 0 to 2 percent slopes	Mb: Macken silty clay loam, ponded	W: Water
	OnA: Mobridge silt loam, 0 to 2 percent slopes	





February 24, 2020

Ms. Joyce C. Henry  
U.S Department of Commerce  
National Telecommunications and Information Administration  
Admin Assistant  
Herbert C. Hoover Building (HCHB)  
1401 Constitution Avenue, N.W  
Washington, D.C 20230

**Subject: Meridian Wind Project Energy Facility Permit Application for the Proposed 175 MW Wind Energy Facility and 345 kV Transmission Line in Hyde County, South Dakota**

Dear Ms. Henry:

Meridian Wind Project, LLC (Meridian Wind), a subsidiary of ENGIE North America, Inc. (ENGIE), is currently preparing to submit an application to the South Dakota Public Utilities Commission for an Energy Facility Permit for the Meridian Wind Project (Project), in compliance with Administrative Rules of South Dakota 20:10:22 and South Dakota Codified Law Ch. 49-41B. The total installed capacity of the wind energy facility will not exceed 175 megawatts (MW) and the 345 kilovolt (kV) transmission line will extend approximately 8.9 miles from east to west. Both the wind energy facility and the transmission line are being permitted at the state and local level.

The Project is located entirely within Hyde County, South Dakota, in the townships of Van Order, Eagle, Chappelle, Holabird, and Highmore as shown in Table 1 and the attached Figure 1. The Project boundary covers approximately 15,043 acres (Project area) and will consist of up to 77 wind turbines, electric collector lines, a central collector substation, access roads connecting to each turbine, and meteorological towers.

**Table 1. Project Location**

County Name	Township Name	Township	Range	Sections
Hyde	Van Order	111N	71W	1-13, 17-20
Hyde	Eagle	111N	72W	1-3, 7-13, 18, 24
Hyde	Chappelle	111N	73W	12, 13
Hyde	Holabird	112N	71W	27-29, 31-35
Hyde	Highmore	112N	72W	36

The Project will interconnect to the high-voltage transmission grid via a 345 kV interconnection switch station (Chappelle Station) located at the western end of the Project's transmission line. Chappelle Station will be owned and operated by Basin Electric Power Cooperative as part of the Triple H Wind Project. The Triple H Wind Project is located immediately west of State Highway 47 and will be built and operated by Meridian Wind's parent company by Summer 2020. The Triple H Wind Project was granted a permit to construct by the SDPUC on July 24, 2019 under EL19-007. In addition to utilizing Chappelle Station, Meridian Wind anticipates sharing the operations and maintenance facility and an Aircraft Detection Lighting System with the Triple H Wind Project.

The purpose of this letter is to introduce the Project and obtain input from the U.S Department of Commerce, National Telecommunications and Information Administration regarding any potential concerns or issues that may arise as a result of the Project.



If you require any further information such as shapefiles or other maps, please do not hesitate to contact me. Any resulting information will be used to help guide Project development in a manner that identifies and avoids telecommunications interference where practicable.

If you have any questions regarding the information presented in this letter, please contact me at ENGIE, 805-569-6185 or at [Casey.Willis@engie.com](mailto:Casey.Willis@engie.com). Thank you for your assistance regarding the Project.

Respectfully submitted,

A handwritten signature in blue ink, appearing to read "Casey Willis", is positioned above the printed name.

**Casey Willis**

3760 State Street, Suite 200  
Santa Barbara, CA 93105

P: 805-569-6185

E: [Casey.Willis@engie.com](mailto:Casey.Willis@engie.com)

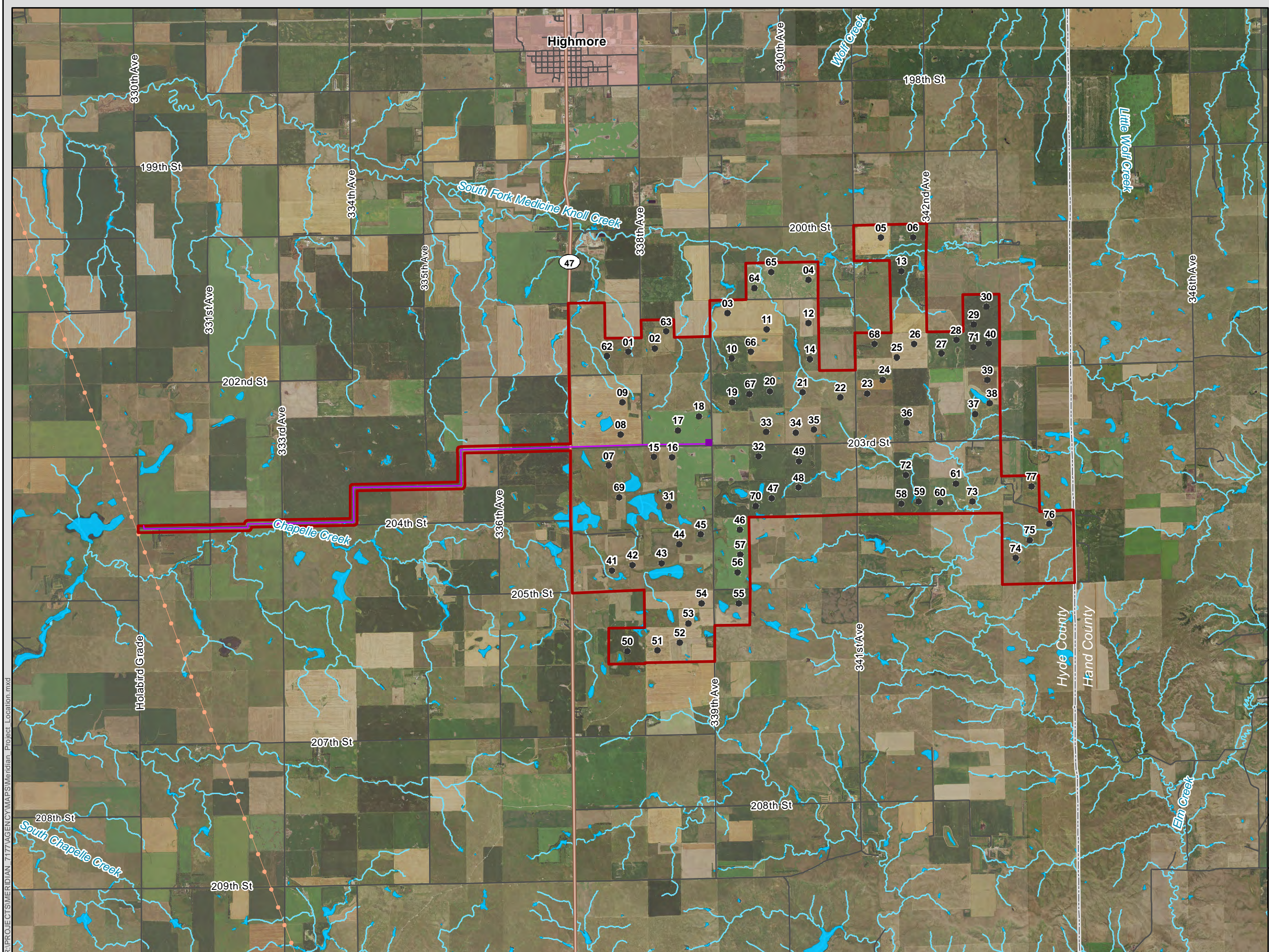
Enclosure:

Figure 1 - Project Location

cc:

Manuela Elizondo – Tetra Tech, Inc.  
Shaun Brooks – Tetra Tech, Inc.





R:\PROJECTS\MERIDIAN 717\AGENCY\MAPS\Meridian Project Location.mxd

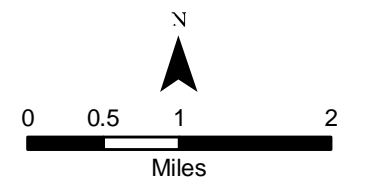


## Meridian Wind Project

### Project Location

Hyde County, South Dakota

- Project Area
- Proposed Turbine
- Proposed Transmission Line
- Potential Collection Substation Location
- Municipal Boundary
- County Boundary
- State Highway
- Local Road
- Existing 345 kV Transmission Line
- NHD Intermittent Stream
- NHD Waterbody







February 24, 2020

Mr. Steve Naylor  
State Regulatory Program Manager  
Pierre Regulatory Office  
U.S. Army Corps of Engineers  
28563 Powerhouse Road  
Pierre, SD 57501

**Subject: Meridian Wind Project Energy Facility Permit Application for the Proposed 175 MW Wind Energy Facility and 345 kV Transmission Line in Hyde County, South Dakota**

Dear Mr. Naylor:

Meridian Wind Project, LLC (Meridian Wind), a subsidiary of ENGIE North America, Inc. (ENGIE), is currently preparing to submit an application to the South Dakota Public Utilities Commission for an Energy Facility Permit for the Meridian Wind Project (Project), in compliance with Administrative Rules of South Dakota 20:10:22 and South Dakota Codified Law Ch. 49-41B. The total installed capacity of the wind energy facility will not exceed 175 megawatts (MW) and the 345 kilovolt (kV) transmission line will extend approximately 8.9 miles from east to west. Both the wind energy facility and the transmission line are being permitted at the state and local level.

The Project is located entirely within Hyde County, South Dakota, in the townships of Van Order, Eagle, Chappelle, Holabird, and Highmore as shown in Table 1 and the attached Figure 1. The Project boundary covers approximately 15,043 acres (Project area) and will consist of up to 77 wind turbines, electric collector lines, a central collector substation, access roads connecting to each turbine, and meteorological towers.

**Table 1. Project Location**

County Name	Township Name	Township	Range	Sections
Hyde	Van Order	111N	71W	1-13, 17-20
Hyde	Eagle	111N	72W	1-3, 7-13, 18, 24
Hyde	Chappelle	111N	73W	12, 13
Hyde	Holabird	112N	71W	27-29, 31-35
Hyde	Highmore	112N	72W	36

The Project will interconnect to the high-voltage transmission grid via a 345 kV interconnection switch station (Chappelle Station) located at the western end of the Project's transmission line. Chappelle Station will be owned and operated by Basin Electric Power Cooperative as part of the Triple H Wind Project. The Triple H Wind Project is located immediately west of State Highway 47 and will be built and operated by Meridian Wind's parent company by Summer 2020. The Triple H Wind Project was granted a permit to construct by the SDPUC on July 24, 2019 under EL19-007. In addition to utilizing Chappelle Station, Meridian Wind anticipates sharing the operations and maintenance facility and an Aircraft Detection Lighting System with the Triple H Wind Project.

The purpose of this letter is to introduce the Project and obtain input from the U.S. Army Corps of Engineers regarding any potential concerns or issues that may exist within the Project area listed above that would influence a decision regarding the use of the land. Thus far, Meridian Wind has done the following:

ENGIE North America  
3760 State Street, Suite 200  
Santa Barbara, CA 93105





The Project conducted a desktop analysis to identify wetlands, Waters of the U.S., and floodplains that would be crossed by the Project. The analysis focused primarily on a review of the following data sources:

- U.S. Fish and Wildlife Service National Wetland Inventory, which is a geospatial database of wetlands mapped throughout the country by the USFWS.
- U.S. Geological Survey National Hydrography Dataset, which is a geospatial database of water drainage networks of the United States.
- Federal Emergency Management Agency floodplain data, which identifies the location and extent of 100 and 500-year floodplains along with floodways.
- U.S. Department of Agriculture Natural Resource Conservation Service Soil Survey Geographic Database, which is a geospatial database of the locations of hydric soils.

Prior to construction, wetland specialists will conduct a comprehensive field reconnaissance to determine the presence of wetlands within the Project area further. Figure 1 also shows water resources that are present within the Project area.

The Project would be designed to avoid resources such as wetlands, surface waters, sensitive habitats, protected species, and historic or cultural areas to the extent possible. Potential impacts to soil and surface water resources would be minimized or avoided by using erosion and sedimentation control best management practices during construction.

If you require any further information, such as shapefiles or other maps, please do not hesitate to contact me. Any resulting information will be used to help guide Project development in a manner that identifies and avoids impacts to sensitive resources where practicable.

If you have any questions regarding the information presented in this letter, please contact me at ENGIE, 805-569-6185, or at [Casey.Willis@engie.com](mailto:Casey.Willis@engie.com). Thank you for your assistance regarding the Project.

Respectfully submitted,

A handwritten signature in blue ink, appearing to read "Casey Willis", is written over a light blue horizontal line.

**Casey Willis**

3760 State Street, Suite 200  
Santa Barbara, CA 93105

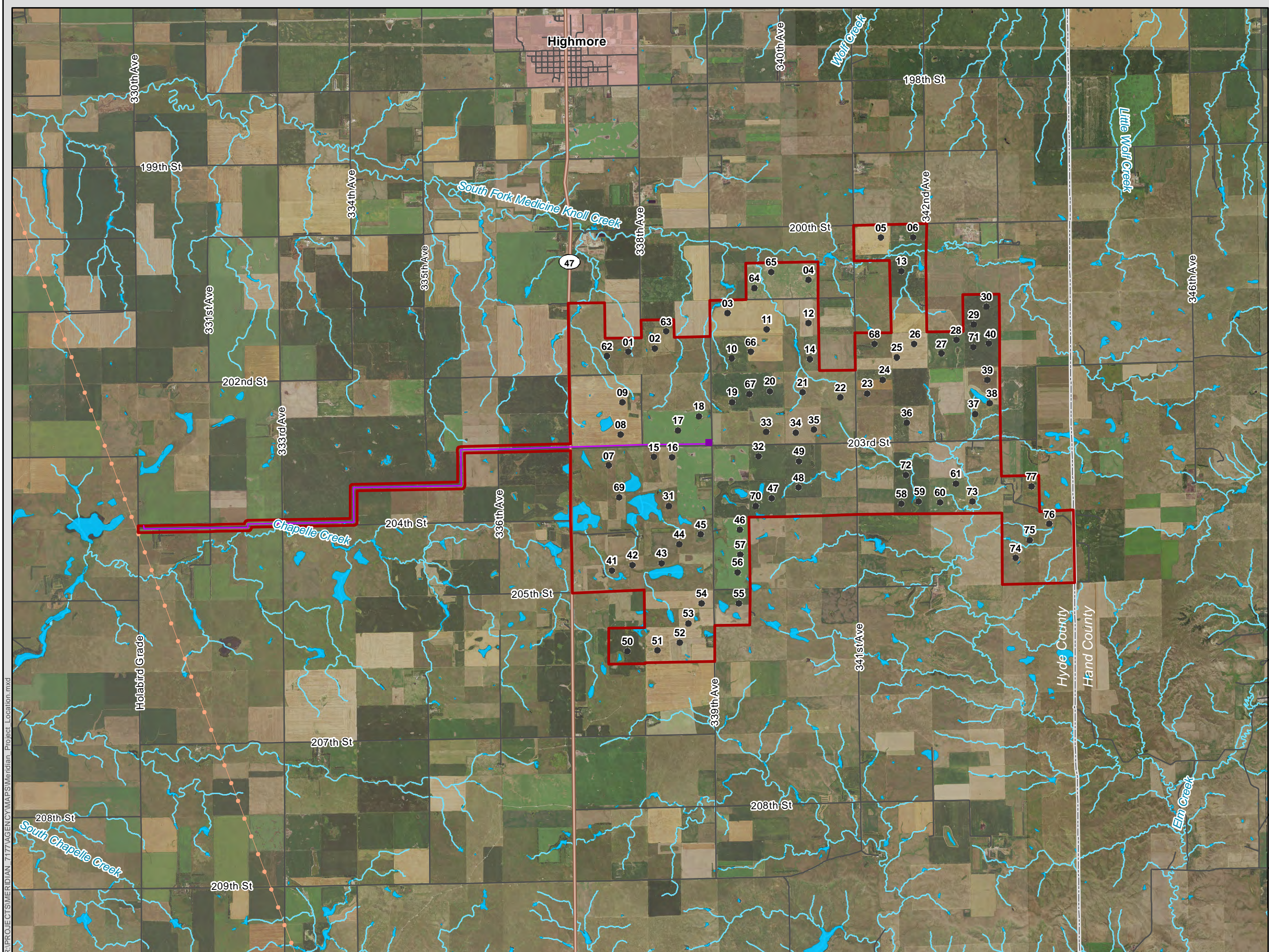
P: 805-569-6185

E: [Casey.Willis@engie.com](mailto:Casey.Willis@engie.com)

cc:

Manuela Elizondo – Tetra Tech, Inc.  
Shaun Brooks – Tetra Tech, Inc.





R:\PROJECTS\MERIDIAN 717\AGENCY\MAPS\Meridian Project Location.mxd

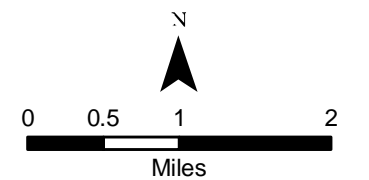


## Meridian Wind Project

### Project Location

Hyde County, South Dakota

- Project Area
- Proposed Turbine
- Proposed Transmission Line
- Potential Collection Substation Location
- Municipal Boundary
- County Boundary
- State Highway
- Local Road
- Existing 345 kV Transmission Line
- NHD Intermittent Stream
- NHD Waterbody







February 24, 2020

Ms. Natalie Gates  
U.S Fish and Wildlife Service (USFWS)  
South Dakota Ecological Services Field Office  
420 S Garfield Ave, Suite 400  
Pierre, SD 57501-5408

**Subject: Meridian Wind Project Energy Facility Permit Application for the Proposed 175 MW Wind Energy Facility and 245 kV Transmission Line in Hyde County, South Dakota**

Dear Ms. Gates:

Meridian Wind Project, LLC (Meridian Wind), a subsidiary of ENGIE North America, Inc. (ENGIE), is currently preparing to submit an application to the South Dakota Public Utilities Commission for an Energy Facility Permit for the Meridian Wind Project (Project), in compliance with Administrative Rules of South Dakota 20:10:22 and South Dakota Codified Law Ch. 49-41B. The total installed capacity of the wind energy facility will not exceed 175 megawatts (MW) and the 345 kilovolt (kV) transmission line will extend approximately 8.9 miles from east to west. Both the wind energy facility and the transmission line are being permitted at the state and local level.

The Project is located entirely within Hyde County, South Dakota, in the townships of Van Order, Eagle, Chappelle, Holabird, and Highmore as shown in Table 1 and the attached Figure 1. The Project boundary covers approximately 15,043 acres (Project area) and will consist of up to 77 wind turbines, electric collector lines, a central collector substation, access roads connecting to each turbine, and meteorological towers.

**Table 1. Project Location**

County Name	Township Name	Township	Range	Sections
Hyde	Van Order	111N	71W	1-13, 17-20
Hyde	Eagle	111N	72W	1-3, 7-13, 18, 24
Hyde	Chappelle	111N	73W	12, 13
Hyde	Holabird	112N	71W	27-29, 31-35
Hyde	Highmore	112N	72W	36

The Project will interconnect to the high-voltage transmission grid via a 345 kV interconnection switch station (Chappelle Station) located at the western end of the Project's transmission line. Chappelle Station will be owned and operated by Basin Electric Power Cooperative as part of the Triple H Wind Project. The Triple H Wind Project is located immediately west of State Highway 47 and will be built and operated by Meridian Wind's parent company by Summer 2020. The Triple H Wind Project was granted a permit to construct by the SDPUC on July 24, 2019 under EL19-007. In addition to utilizing Chappelle Station, Meridian Wind anticipates sharing the operations and maintenance facility and an Aircraft Detection Lighting System with the Triple H Wind Project.

The purpose of this letter is to introduce the Project and obtain input from the South Dakota Ecological Services Field Office regarding any potential concerns or issues that may exist within the Project area listed above that would influence a decision regarding the use of the land.



## State Listed Species

The Project reviewed the list of state threatened and/or endangered species known to exist within Hyde County as documented through the South Dakota Natural Heritage Database (Table 2).

**Table 2: State-listed species known or believed to occur in or near the Project Area**

Species	Status	Habitat	Project Evaluation
<b>Mammals</b>			
Swift fox ( <i>Vulpes velox</i> )	Threatened	Prefers open, rolling mixed grass and short-grass prairies with little or no shrubs, as well as mixed agricultural use.	Herbaceous and agricultural areas within the Project area could potentially provide suitable habitat for the Swift fox, however there are no known occurrences in Hyde County.
<b>Birds</b>			
Whooping Crane ( <i>Grus americana</i> )	Endangered	Breeds in the Northwest Territories of Canada and winters in Aransas National Wildlife Refuge in Texas. Each spring and fall, 95 percent of this population travels within a 180-mile wide migration corridor through the Dakotas, Nebraska, Kansas, and Oklahoma. Prefers stopovers in croplands interspersed with palustrine wetlands.	The Project area provides suitable whooping crane habitat in the form of herbaceous cover and cropland interspersed with palustrine wetlands. The Project area is located within the 75 and 80% migration corridor. The widespread availability of suitable stopover habitat indicates that if cranes are displaced from suitable habitat by development of the current Project, they are likely to find similar habitat nearby.
Interior least tern ( <i>Sternula antillarum athalassos</i> )	Endangered	Breeds along barren areas near waters and prefers open habitat with sand and gravel within a wide, unobstructed river channel, or open flats along the shorelines of lakes and rivers.	Interior least terns can be found anywhere in Hyde County during migration and breeding season; however, no suitable nesting habitat was found within the Project area.
Piping plover ( <i>Charadrius melodus</i> )	Threatened	Nests and forages along shorelines of small lakes, large beaches, river islands, or industrial pond shorelines. Critical habitat is designated along Missouri River and the Oahe Reservoir in Hughes County, South Dakota.	Surveys of off-river sites have found a few Piping plover nests in alkali lakes in central South Dakota, but the major alkaline lakes are located outside of the Project area.
<b>Fish</b>			
Pallid Sturgeon ( <i>Scaphirhynchus albus</i> )	Endangered	Adapted to sandy areas with fine substrates, floodplains, backwaters, chutes, sloughs, islands, sandbars, and main channel waters within large river ecosystems.	Although potential/verified occurrence of the pallid sturgeon has been reported for all counties that are contiguous with the Missouri River, its geographic range falls outside the Project area, and is unlikely to occur with the Project area.

The Project would be designed to avoid resources such as wetlands, surface waters, sensitive habitats, protected species, and historic or cultural areas to the extent possible. Potential impacts to soil and surface water resources would be minimized or avoided by using erosion and sedimentation control best management practices during construction. Meridian Wind respectfully requests comments from USFWS South Dakota Ecological Services Field Office regarding the list of special-status species and their associated habitats. Specifically, Meridian Wind requests locations of any known eagle nests that would





affect Project construction and confirmation that there are no known northern long-eared bat roost trees or hibernacula within 0.25 mile of the Project.

Upon your review, we ask that the USFWS South Dakota Ecological Services Field Office send a written response to the address below, stating specific findings, concerns, further requirements, or concurrence with the Project related species evaluation presented in Table 2. If you require any further information, such as shapefiles or other maps, please do not hesitate to contact us. Any resulting information will be used to help guide Project development in a manner that identifies and avoids impacts to sensitive resources where practicable.

If you have any questions regarding the information presented in this letter, please contact me at ENGIE, 805-569-6185, or at [Casey.Willis@engie.com](mailto:Casey.Willis@engie.com). Thank you for your assistance regarding the Project.

Respectfully submitted,

A handwritten signature in blue ink, appearing to read "Casey Willis", is positioned above the printed name.

**Casey Willis**

3760 State Street, Suite 200  
Santa Barbara, CA 93105

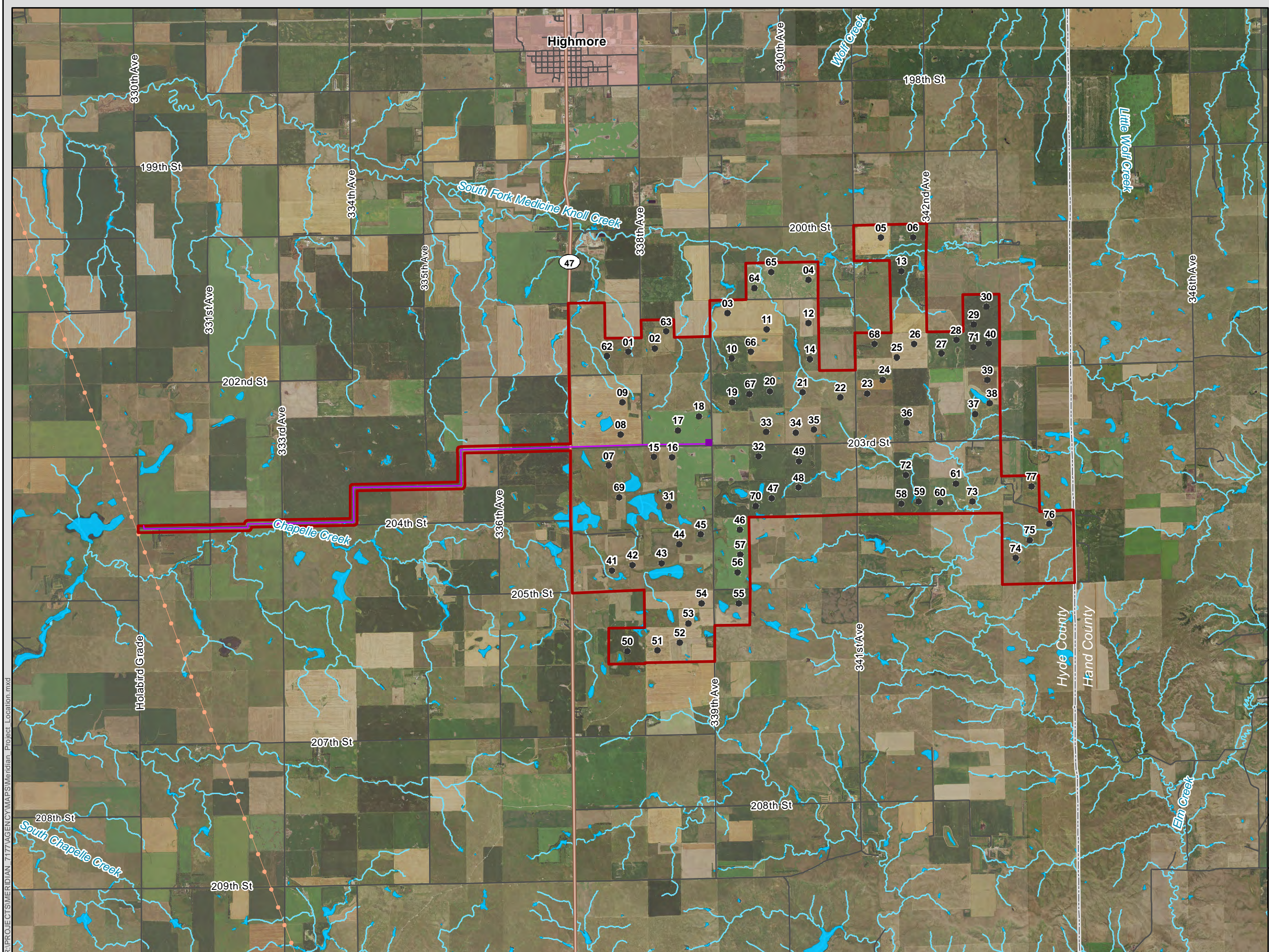
P: 805-569-6185

E: [Casey.Willis@engie.com](mailto:Casey.Willis@engie.com)

cc:

Manuela Elizondo – Tetra Tech, Inc.  
Shaun Brooks – Tetra Tech, Inc.



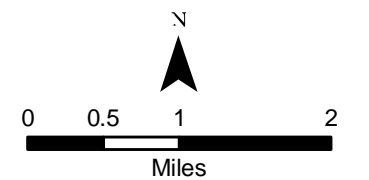


## Meridian Wind Project

### Project Location

Hyde County, South Dakota

- Project Area
- Proposed Turbine
- Proposed Transmission Line
- Potential Collection Substation Location
- Municipal Boundary
- County Boundary
- State Highway
- Local Road
- Existing 345 kV Transmission Line
- NHD Intermittent Stream
- NHD Waterbody







February 24, 2020

Mr. Thomas Rohlck  
U.S. Fish and Wildlife Service  
Huron Wetland Management District  
200 4<sup>th</sup> Street SW, Room 309  
Huron, SD, 57350

**Subject: Meridian Wind Project Energy Facility Permit Application for the Proposed 175 MW Wind Energy Facility and 345 kV Transmission Line in Hyde County, South Dakota**

Dear Mr. Rohlck:

Meridian Wind Project, LLC (Meridian Wind), a subsidiary of ENGIE North America, Inc. (ENGIE), is currently preparing to submit an application to the South Dakota Public Utilities Commission for an Energy Facility Permit for the Meridian Wind Project (Project), in compliance with Administrative Rules of South Dakota 20:10:22 and South Dakota Codified Law Ch. 49-41B. The total installed capacity of the wind energy facility will not exceed 175 megawatts (MW) and the 345 kilovolt (kV) transmission line will extend approximately 8.9 miles from east to west. Both the wind energy facility and the transmission line are being permitted at the state and local level.

The Project is located entirely within Hyde County, South Dakota, in the townships of Van Order, Eagle, Chappelle, Holabird, and Highmore as shown in Table 1 and the attached Figure 1. The Project boundary covers approximately 15,043 acres (Project area) and will consist of up to 77 wind turbines, electric collector lines, a central collector substation, access roads connecting to each turbine, and meteorological towers.

**Table 1. Project Location**

County Name	Township Name	Township	Range	Sections
Hyde	Van Order	111N	71W	1-13, 17-20
Hyde	Eagle	111N	72W	1-3, 7-13, 18, 24
Hyde	Chappelle	111N	73W	12, 13
Hyde	Holabird	112N	71W	27-29, 31-35
Hyde	Highmore	112N	72W	36

The Project will interconnect to the high-voltage transmission grid via a 345 kV interconnection switch station (Chappelle Station) located at the western end of the Project's transmission line. Chappelle Station will be owned and operated by Basin Electric Power Cooperative as part of the Triple H Wind Project. The Triple H Wind Project is located immediately west of State Highway 47 and will be built and operated by Meridian Wind's parent company by Summer 2020. The Triple H Wind Project was granted a permit to construct by the SDPUC on July 24, 2019 under EL19-007. In addition to utilizing Chappelle Station, Meridian Wind anticipates sharing the operations and maintenance facility and an Aircraft Detection Lighting System with the Triple H Wind Project.

The purpose of this letter is to introduce the Project and obtain input from the U.S. Fish and Wildlife Service (USFWS) Huron Wetland Management District regarding any potential concerns or issues that may exist within the Project area listed above that would influence a decision regarding the use of the land.



## USFWS Easement Exchange Program

The USFWS Huron Wetland Management District administers the wetland easement and grassland easement programs in eight counties in east-central South Dakota, including Hyde County. Several USFWS grassland and wetland easements exist within the Project area. One parcel was leased by ENGIE prior to being placed under a grassland easement by the USFWS. Therefore, as verified by USFWS, impacts associated with this parcel's development for wind-related activities, will not trigger NEPA. No other land within a grassland easement nor wetland within a USFWS wetland easement will be impacted.

## Federally Listed Species

The Project obtained the official list of federally listed threatened and/or endangered species within the Project area using the USFWS Information for Planning and Consultation (IPaC) online tool (attached). To acquire the most accurate information, a shapefile of the Project area was uploaded for the online analysis. Table 2 summarizes the official list of species from the IPaC online tool that are federally endangered, threatened, or candidates under the Endangered Species Act for the Project area.

**Table 2: State-listed species known or believed to occur in or near the Project Area**

Species	Status	Habitat	Project Evaluation
<b>Mammals</b>			
Northern long-eared bat ( <i>Myotis septentrionalis</i> )	Threatened	Found on the Atlantic Coast from Main to North Carolina, western to eastern Oklahoma and in North and South Dakota. In South Dakota they are known to be found within the Black Hills, in western South Dakota, and along the Missouri River in western South Dakota.	The Project area is within the estimated range for the species in the form of tall trees, abandoned buildings, riparian areas, and caves. A habitat analysis was conducted for the Project. No NLEB habitat was identified within the current Project area.
<b>Birds</b>			
Whooping Crane ( <i>Grus americana</i> )	Endangered	Breeds in the Northwest Territories of Canada and winters in Aransas National Wildlife Refuge in Texas. Each spring and fall, 95 percent of this population travels within a 180-mile wide migration corridor through the Dakotas, Nebraska, Kansas, and Oklahoma. Prefers stopovers in croplands interspersed with palustrine wetlands.	The Project area provides suitable whooping crane habitat in the form of herbaceous cover and cropland interspersed with palustrine wetlands. The Project area is located within the 75 and 80% migration corridor. The widespread availability of suitable stopover habitat indicates that if cranes are displaced from suitable habitat by development of the current Project, they are likely to find similar habitat nearby.
Red knot ( <i>Calidris canutus rufa</i> )	Threatened	Breeds in the tundra of the central Canadian Arctic and spends winters in the southern tip of South America. This species is also known to spend time outside of its breeding ground in marine habitats, estuaries, and bays.	Occurrence within the Project area is considered unlikely, but infrequently the species can be found within the Project area in the spring and fall.
Interior least tern ( <i>Sterna antillarum athalassos</i> )	Endangered	Breeds along barren areas near waters and prefers open habitat with sand and gravel within a wide unobstructed river	Interior least terns can be found anywhere in Hyde County during migration and breeding season; however,





**Table 2: State-listed species known or believed to occur in or near the Project Area**

Species	Status	Habitat	Project Evaluation
		channel, or open flats along the shorelines of lakes and rivers.	no suitable nesting habitat was found within the Project area.
Piping plover ( <i>Charadrius melodus</i> )	Threatened	Nests and forages along shorelines of small lakes, large beaches, river islands or industrial pond shorelines. Critical habitat is designated along Missouri River and the Oahe Reservoir in Hughes County, South Dakota.	Surveys of off-river sites have found a few Piping plover nests in alkali lakes in central South Dakota, but the major alkaline lakes are located outside of the Project area.
<b>Fish</b>			
Pallid Sturgeon ( <i>Scaphirhynchus albus</i> )	Endangered	Adapted to sandy areas with fine substrates, floodplains, backwaters, chutes, sloughs, islands, sandbars, and main channel waters within large river ecosystems.	Although potential/verified occurrence of the pallid sturgeon has been reported for all counties that are contiguous with the Missouri River, its geographic range falls outside the Project area, and is unlikely to occur with the Project area.

The Project would be designed to avoid resources such as wetlands, surface waters, sensitive habitats, protected species and historic or cultural areas to the extent possible. Potential impacts to soil and surface water resources would be minimized or avoided by using erosion and sedimentation control best management practices during construction. Meridian Wind respectfully requests comments from USFWS regarding the list of special-status species and their associated habitats.

Upon your review, we ask that the USFWS Huron Wetland Management District send a written response to the address below, stating specific findings, concerns, further requirements, or concurrence with the Project. If you require any further information such as shapefiles or other maps, please do not hesitate to contact me. Any resulting information will be used to help guide Project development in a manner that identifies and avoids impacts to sensitive resources where practicable.

If you have any questions regarding the information presented in this letter, please contact me at ENGIE, 805-569-6185 or at [Casey.Willis@engie.com](mailto:Casey.Willis@engie.com). Thank you for your assistance regarding the Project.

Respectfully submitted,

**Casey Willis**

3760 State Street, Suite 200  
Santa Barbara, CA 93105

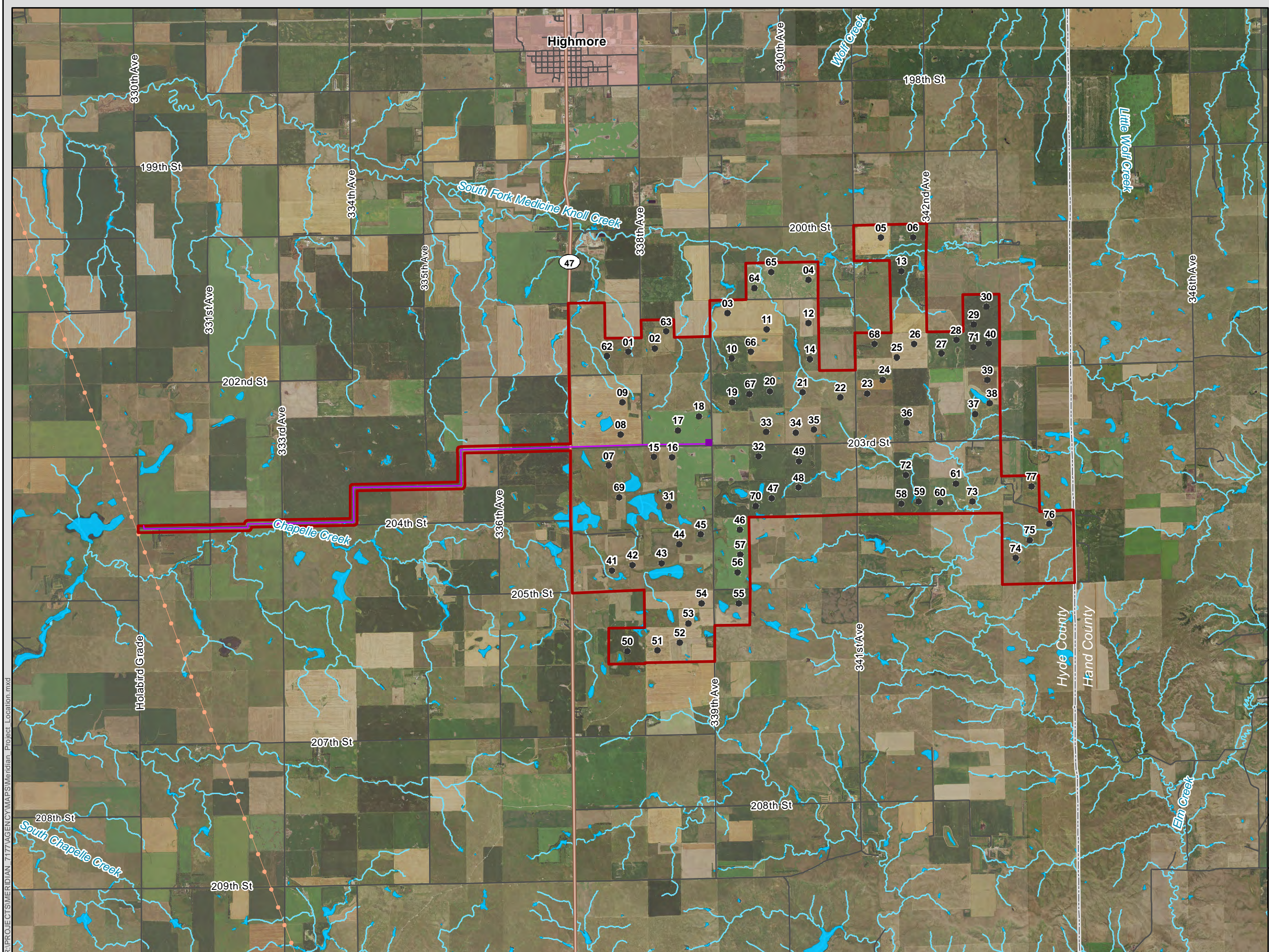
P: 805-569-6185

E: [Casey.Willis@engie.com](mailto:Casey.Willis@engie.com)

cc:

Manuela Elizondo – Tetra Tech, Inc.  
Shaun Brooks – Tetra Tech, Inc.



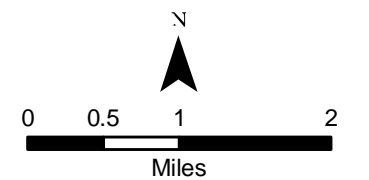


## Meridian Wind Project

### Project Location

Hyde County, South Dakota

- Project Area
- Proposed Turbine
- Proposed Transmission Line
- Potential Collection Substation Location
- Municipal Boundary
- County Boundary
- State Highway
- Local Road
- Existing 345 kV Transmission Line
- NHD Intermittent Stream
- NHD Waterbody





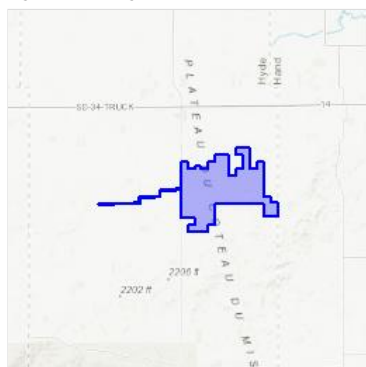
# IPaC resource list

This report is an automatically generated list of species and other resources such as critical habitat (collectively referred to as *trust resources*) under the U.S. Fish and Wildlife Service's (USFWS) jurisdiction that are known or expected to be on or near the project area referenced below. The list may also include trust resources that occur outside of the project area, but that could potentially be directly or indirectly affected by activities in the project area. However, determining the likelihood and extent of effects a project may have on trust resources typically requires gathering additional site-specific (e.g., vegetation/species surveys) and project-specific (e.g., magnitude and timing of proposed activities) information.

Below is a summary of the project information you provided and contact information for the USFWS office(s) with jurisdiction in the defined project area. Please read the introduction to each section that follows (Endangered Species, Migratory Birds, USFWS Facilities, and NWI Wetlands) for additional information applicable to the trust resources addressed in that section.

## Location

Hyde County, South Dakota



## Local office

South Dakota Ecological Services Field Office

☎ (605) 224-8693

📠 (605) 224-9974

420 South Garfield Avenue, Suite 400  
Pierre, SD 57501-5408

<http://www.fws.gov/southdakotafieldoffice/>



# Endangered species

**This resource list is for informational purposes only and does not constitute an analysis of project level impacts.**

The primary information used to generate this list is the known or expected range of each species. Additional areas of influence (AOI) for species are also considered. An AOI includes areas outside of the species range if the species could be indirectly affected by activities in that area (e.g., placing a dam upstream of a fish population, even if that fish does not occur at the dam site, may indirectly impact the species by reducing or eliminating water flow downstream). Because species can move, and site conditions can change, the species on this list are not guaranteed to be found on or near the project area. To fully determine any potential effects to species, additional site-specific and project-specific information is often required.

Section 7 of the Endangered Species Act **requires** Federal agencies to "request of the Secretary information whether any species which is listed or proposed to be listed may be present in the area of such proposed action" for any project that is conducted, permitted, funded, or licensed by any Federal agency. A letter from the local office and a species list which fulfills this requirement can **only** be obtained by requesting an official species list from either the Regulatory Review section in IPaC (see directions below) or from the local field office directly.

For project evaluations that require USFWS concurrence/review, please return to the IPaC website and request an official species list by doing the following:

1. Draw the project location and click CONTINUE.
2. Click DEFINE PROJECT.
3. Log in (if directed to do so).
4. Provide a name and description for your project.
5. Click REQUEST SPECIES LIST.

Listed species<sup>1</sup> and their critical habitats are managed by the [Ecological Services Program](#) of the U.S. Fish and Wildlife Service (USFWS) and the fisheries division of the National Oceanic and Atmospheric Administration (NOAA Fisheries<sup>2</sup>).

Species and critical habitats under the sole responsibility of NOAA Fisheries are **not** shown on this list. Please contact [NOAA Fisheries](#) for [species under their jurisdiction](#).

1. Species listed under the [Endangered Species Act](#) are threatened or endangered; IPaC also shows species that are candidates, or proposed, for listing. See the [listing status page](#) for more information.
2. [NOAA Fisheries](#), also known as the National Marine Fisheries Service (NMFS), is an office of the National Oceanic and Atmospheric Administration within the Department of Commerce.

The following species are potentially affected by activities in this location:

## Mammals

NAME	STATUS
Northern Long-eared Bat <i>Myotis septentrionalis</i> No critical habitat has been designated for this species. <a href="https://ecos.fws.gov/ecp/species/9045">https://ecos.fws.gov/ecp/species/9045</a>	Threatened

## Birds

NAME	STATUS
Least Tern <i>Sterna antillarum</i> No critical habitat has been designated for this species. <a href="https://ecos.fws.gov/ecp/species/8505">https://ecos.fws.gov/ecp/species/8505</a>	Endangered
Piping Plover <i>Charadrius melodus</i> There is <b>final</b> critical habitat for this species. Your location is outside the critical habitat. <a href="https://ecos.fws.gov/ecp/species/6039">https://ecos.fws.gov/ecp/species/6039</a>	Threatened
Red Knot <i>Calidris canutus rufa</i> No critical habitat has been designated for this species. <a href="https://ecos.fws.gov/ecp/species/1864">https://ecos.fws.gov/ecp/species/1864</a>	Threatened



**Whooping Crane** *Grus americana*

Endangered

There is **final** critical habitat for this species. Your location is outside the critical habitat.<https://ecos.fws.gov/ecp/species/758>

## Fishes

NAME

STATUS

**Pallid Sturgeon** *Scaphirhynchus albus*

Endangered

No critical habitat has been designated for this species.

<https://ecos.fws.gov/ecp/species/7162>

## Critical habitats

Potential effects to critical habitat(s) in this location must be analyzed along with the endangered species themselves.

THERE ARE NO CRITICAL HABITATS AT THIS LOCATION.

## Migratory birds

Certain birds are protected under the Migratory Bird Treaty Act<sup>1</sup> and the Bald and Golden Eagle Protection Act<sup>2</sup>.Any person or organization who plans or conducts activities that may result in impacts to migratory birds, eagles, and their habitats should follow appropriate regulations and consider implementing appropriate conservation measures, as described [below](#).

1. The [Migratory Birds Treaty Act](#) of 1918.
2. The [Bald and Golden Eagle Protection Act](#) of 1940.

Additional information can be found using the following links:

- Birds of Conservation Concern <http://www.fws.gov/birds/management/managed-species/birds-of-conservation-concern.php>
- Measures for avoiding and minimizing impacts to birds <http://www.fws.gov/birds/management/project-assessment-tools-and-guidance/conservation-measures.php>
- Nationwide conservation measures for birds <http://www.fws.gov/migratorybirds/pdf/management/nationwidestandardconservationmeasures.pdf>

MIGRATORY BIRD INFORMATION IS NOT AVAILABLE AT THIS TIME

**Tell me more about conservation measures I can implement to avoid or minimize impacts to migratory birds.**

[Nationwide Conservation Measures](#) describes measures that can help avoid and minimize impacts to all birds at any location year round. Implementation of these measures is particularly important when birds are most likely to occur in the project area. When birds may be breeding in the area, identifying the locations of any active nests and avoiding their destruction is a very helpful impact minimization measure. To see when birds are most likely to occur and be breeding in your project area, view the Probability of Presence Summary. [Additional measures](#) and/or [permits](#) may be advisable depending on the type of activity you are conducting and the type of infrastructure or bird species present on your project site.

**What does IPaC use to generate the migratory birds potentially occurring in my specified location?**

The Migratory Bird Resource List is comprised of USFWS [Birds of Conservation Concern \(BCC\)](#) and other species that may warrant special attention in your project location.

The migratory bird list generated for your project is derived from data provided by the [Avian Knowledge Network \(AKN\)](#). The AKN data is based on a growing collection of [survey, banding, and citizen science datasets](#) and is queried and filtered to return a list of those birds reported as occurring in the 10km grid cell(s) which your project intersects, and that have been identified as warranting special attention because they are a BCC species in that area, an eagle ([Eagle Act](#) requirements may apply), or a species that has a particular vulnerability to offshore activities or development.

Again, the Migratory Bird Resource list includes only a subset of birds that may occur in your project area. It is not representative of all birds that may occur in your project area. To get a list of all birds potentially present in your project area, please visit the [AKN Phenology Tool](#).

**What does IPaC use to generate the probability of presence graphs for the migratory birds potentially occurring in my specified location?**



The probability of presence graphs associated with your migratory bird list are based on data provided by the [Avian Knowledge Network \(AKN\)](#). This data is derived from a growing collection of [survey, banding, and citizen science datasets](#).

Probability of presence data is continuously being updated as new and better information becomes available. To learn more about how the probability of presence graphs are produced and how to interpret them, go the Probability of Presence Summary and then click on the "Tell me about these graphs" link.

### How do I know if a bird is breeding, wintering, migrating or present year-round in my project area?

To see what part of a particular bird's range your project area falls within (i.e. breeding, wintering, migrating or year-round), you may refer to the following resources: [The Cornell Lab of Ornithology All About Birds Bird Guide](#), or (if you are unsuccessful in locating the bird of interest there), the [Cornell Lab of Ornithology Neotropical Birds guide](#). If a bird on your migratory bird species list has a breeding season associated with it, if that bird does occur in your project area, there may be nests present at some point within the timeframe specified. If "Breeds elsewhere" is indicated, then the bird likely does not breed in your project area.

### What are the levels of concern for migratory birds?

Migratory birds delivered through IPaC fall into the following distinct categories of concern:

1. "BCC Rangewide" birds are [Birds of Conservation Concern](#) (BCC) that are of concern throughout their range anywhere within the USA (including Hawaii, the Pacific Islands, Puerto Rico, and the Virgin Islands);
2. "BCC - BCR" birds are BCCs that are of concern only in particular Bird Conservation Regions (BCRs) in the continental USA; and
3. "Non-BCC - Vulnerable" birds are not BCC species in your project area, but appear on your list either because of the [Eagle Act](#) requirements (for eagles) or (for non-eagles) potential susceptibilities in offshore areas from certain types of development or activities (e.g. offshore energy development or longline fishing).

Although it is important to try to avoid and minimize impacts to all birds, efforts should be made, in particular, to avoid and minimize impacts to the birds on this list, especially eagles and BCC species of rangewide concern. For more information on conservation measures you can implement to help avoid and minimize migratory bird impacts and requirements for eagles, please see the FAQs for these topics.

### Details about birds that are potentially affected by offshore projects

For additional details about the relative occurrence and abundance of both individual bird species and groups of bird species within your project area off the Atlantic Coast, please visit the [Northeast Ocean Data Portal](#). The Portal also offers data and information about other taxa besides birds that may be helpful to you in your project review. Alternately, you may download the bird model results files underlying the portal maps through the [NOAA NCCOS Integrative Statistical Modeling and Predictive Mapping of Marine Bird Distributions and Abundance on the Atlantic Outer Continental Shelf](#) project webpage.

Bird tracking data can also provide additional details about occurrence and habitat use throughout the year, including migration. Models relying on survey data may not include this information. For additional information on marine bird tracking data, see the [Diving Bird Study](#) and the [nanotag studies](#) or contact [Caleb Spiegel](#) or [Pam Loring](#).

### What if I have eagles on my list?

If your project has the potential to disturb or kill eagles, you may need to [obtain a permit](#) to avoid violating the Eagle Act should such impacts occur.

### Proper Interpretation and Use of Your Migratory Bird Report

The migratory bird list generated is not a list of all birds in your project area, only a subset of birds of priority concern. To learn more about how your list is generated, and see options for identifying what other birds may be in your project area, please see the FAQ "What does IPaC use to generate the migratory birds potentially occurring in my specified location". Please be aware this report provides the "probability of presence" of birds within the 10 km grid cell(s) that overlap your project; not your exact project footprint. On the graphs provided, please also look carefully at the survey effort (indicated by the black vertical bar) and for the existence of the "no data" indicator (a red horizontal bar). A high survey effort is the key component. If the survey effort is high, then the probability of presence score can be viewed as more dependable. In contrast, a low survey effort bar or no data bar means a lack of data and, therefore, a lack of certainty about presence of the species. This list is not perfect; it is simply a starting point for identifying what birds of concern have the potential to be in your project area, when they might be there, and if they might be breeding (which means nests might be present). The list helps you know what to look for to confirm presence, and helps guide you in knowing when to implement conservation measures to avoid or minimize potential impacts from your project activities, should presence be confirmed. To learn more about conservation measures, visit the FAQ "Tell me about conservation measures I can implement to avoid or minimize impacts to migratory birds" at the bottom of your migratory bird trust resources page.

## Facilities

### National Wildlife Refuge lands

Any activity proposed on lands managed by the [National Wildlife Refuge](#) system must undergo a 'Compatibility Determination' conducted by the Refuge. Please contact the individual Refuges to discuss any questions or concerns.

This location overlaps the following National Wildlife Refuge lands:



LAND

ACRES



Huron Wetland Management District

223,627.64 acres

 (605) 352-5894 (605) 352-6709

Federal Building  
200 4th Street Sw, Room 309  
Huron, SD 57350-2431

<https://www.fws.gov/refuges/profiles/index.cfm?id=64110>

## Fish hatcheries

THERE ARE NO FISH HATCHERIES AT THIS LOCATION.

## Wetlands in the National Wetlands Inventory

Impacts to [NWI wetlands](#) and other aquatic habitats may be subject to regulation under Section 404 of the Clean Water Act, or other State/Federal statutes.

For more information please contact the Regulatory Program of the local [U.S. Army Corps of Engineers District](#).

Please note that the NWI data being shown may be out of date. We are currently working to update our NWI data set. We recommend you verify these results with a site visit to determine the actual extent of wetlands on site.

This location overlaps the following wetlands:

### FRESHWATER EMERGENT WETLAND

[PEM1C](#)  
[PEM1A](#)  
[PEM1Ad](#)  
[PEM1Cx](#)  
[PEM1Cd](#)  
[PEM1Ch](#)

### FRESHWATER POND

[PAB/EM1F](#)  
[PABFh](#)  
[PABFx](#)

### LAKE

[L2ABF](#)  
[L2ABFx](#)

### RIVERINE

[R4SBC](#)  
[R5UBH](#)

A full description for each wetland code can be found at the [National Wetlands Inventory website](#)

### Data limitations

The Service's objective of mapping wetlands and deepwater habitats is to produce reconnaissance level information on the location, type and size of these resources. The maps are prepared from the analysis of high altitude imagery. Wetlands are identified based on vegetation, visible hydrology and geography. A margin of error is inherent in the use of imagery; thus, detailed on-the-ground inspection of any particular site may result in revision of the wetland boundaries or classification established through image analysis.

The accuracy of image interpretation depends on the quality of the imagery, the experience of the image analysts, the amount and quality of the collateral data and the amount of ground truth verification work conducted. Metadata should be consulted to determine the date of the source imagery used and any mapping problems.

Wetlands or other mapped features may have changed since the date of the imagery or field work. There may be occasional differences in polygon boundaries or classifications between the information depicted on the map and the actual conditions on site.



**Data exclusions**

Certain wetland habitats are excluded from the National mapping program because of the limitations of aerial imagery as the primary data source used to detect wetlands. These habitats include seagrasses or submerged aquatic vegetation that are found in the intertidal and subtidal zones of estuaries and nearshore coastal waters. Some deepwater reef communities (coral or tubercid worm reefs) have also been excluded from the inventory. These habitats, because of their depth, go undetected by aerial imagery.

**Data precautions**

Federal, state, and local regulatory agencies with jurisdiction over wetlands may define and describe wetlands in a different manner than that used in this inventory. There is no attempt, in either the design or products of this inventory, to define the limits of proprietary jurisdiction of any Federal, state, or local government or to establish the geographical scope of the regulatory programs of government agencies. Persons intending to engage in activities involving modifications within or adjacent to wetland areas should seek the advice of appropriate federal, state, or local agencies concerning specified agency regulatory programs and proprietary jurisdictions that may affect such activities.

NOT FOR CONSULTATION





February 24, 2020

Mr. Adam Mathiowetz  
South Dakota Department of Environment and Natural Resources  
Division of Environmental Services  
523 East Capitol Avenue  
Pierre, SD 57501-3182

**Subject: Meridian Wind Project Energy Facility Permit Application for the Proposed 175 MW Wind Energy Facility and 345 kV Transmission Line in Hyde County, South Dakota**

Dear Mr. Mathiowetz:

Meridian Wind Project, LLC (Meridian Wind), a subsidiary of ENGIE North America, Inc. (ENGIE), is currently preparing to submit an application to the South Dakota Public Utilities Commission for an Energy Facility Permit for the Meridian Wind Project (Project), in compliance with Administrative Rules of South Dakota 20:10:22 and South Dakota Codified Law Ch. 49-41B. The total installed capacity of the wind energy facility will not exceed 175 megawatts (MW) and the 345 kilovolt (kV) transmission line will extend approximately 8.9 miles from east to west. Both the wind energy facility and the transmission line are being permitted at the state and local level.

The Project is located entirely within Hyde County, South Dakota, in the townships of Van Order, Eagle, Chappelle, Holabird, and Highmore as shown in Table 1 and the attached Figure 1. The Project boundary covers approximately 15,043 acres (Project area) and will consist of up to 77 wind turbines, electric collector lines, a central collector substation, access roads connecting to each turbine, and meteorological towers.

**Table 1. Project Location**

County Name	Township Name	Township	Range	Sections
Hyde	Van Order	111N	71W	1-13, 17-20
Hyde	Eagle	111N	72W	1-3, 7-13, 18, 24
Hyde	Chappelle	111N	73W	12, 13
Hyde	Holabird	112N	71W	27-29, 31-35
Hyde	Highmore	112N	72W	36

The Project will interconnect to the high-voltage transmission grid via a 345 kV interconnection switch station (Chappelle Station) located at the western end of the Project's transmission line. Chappelle Station will be owned and operated by Basin Electric Power Cooperative as part of the Triple H Wind Project. The Triple H Wind Project is located immediately west of State Highway 47 and will be built and operated by Meridian Wind's parent company by Summer 2020. The Triple H Wind Project was granted a permit to construct by the SDPUC on July 24, 2019 under EL19-007. In addition to utilizing Chappelle Station, Meridian Wind anticipates sharing the operations and maintenance facility and an Aircraft Detection Lighting System with the Triple H Wind Project.

The purpose of this letter is to introduce the Project and obtain input from the South Dakota Department of Environment and Natural Resources regarding any potential concerns or issues that may exist within the Project area listed above that would influence a decision regarding the use of the land. The Project would be designed to avoid resources such as wetlands, surface waters, sensitive habitats, protected species, and historic or cultural areas to the extent possible. Potential impacts to soil and surface water resources would be minimized or avoided by using erosion and sedimentation control best management





practices during construction.

If you require any further information, such as shapefiles or other maps, please do not hesitate to contact me. Any resulting information will be used to help guide Project development in a manner that identifies and avoids impacts to sensitive resources where practicable.

If you have any questions regarding the information presented in this letter, please contact me at ENGIE, 805-569-6185, or at [Casey.Willis@engie.com](mailto:Casey.Willis@engie.com). Thank you for your assistance regarding the Project.

Respectfully submitted,

A handwritten signature in blue ink, appearing to read "Casey Willis", is positioned above the printed name.

**Casey Willis**

3760 State Street, Suite 200  
Santa Barbara, CA 93105

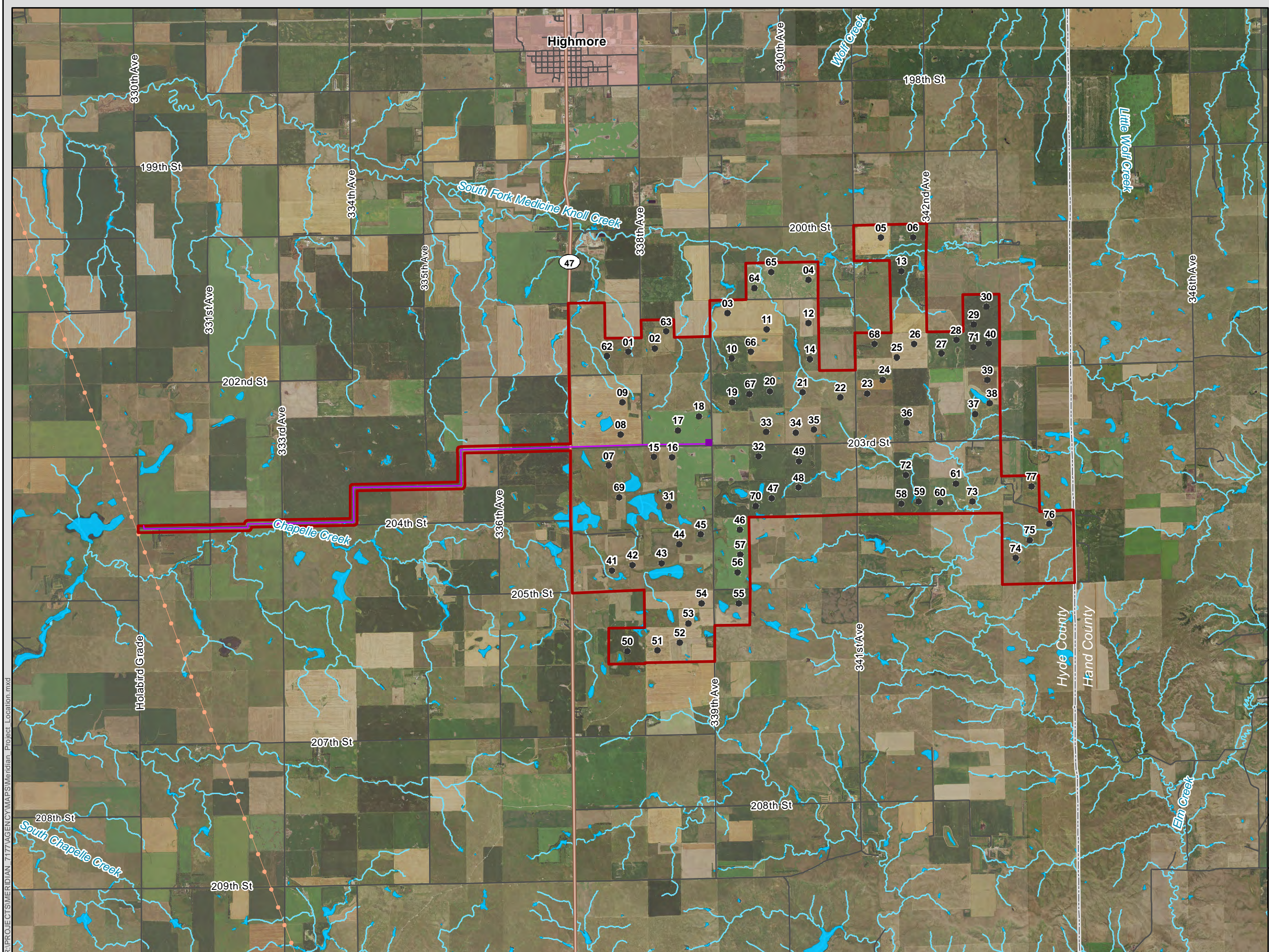
P: 805-569-6185

E: [Casey.Willis@engie.com](mailto:Casey.Willis@engie.com)

cc:

Manuela Elizondo – Tetra Tech, Inc.  
Shaun Brooks – Tetra Tech, Inc.



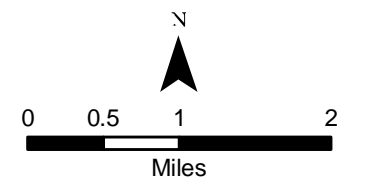


## Meridian Wind Project

### Project Location

Hyde County, South Dakota

- Project Area
- Proposed Turbine
- Proposed Transmission Line
- Potential Collection Substation Location
- Municipal Boundary
- County Boundary
- State Highway
- Local Road
- Existing 345 kV Transmission Line
- NHD Intermittent Stream
- NHD Waterbody







February 24, 2020

Ms. Hilary Morey  
Environmental Review Coordinator  
South Dakota Game Fish and Parks  
523 East Capitol Avenue  
Pierre, SD 57501-3182

**Subject: Meridian Wind Project Energy Facility Permit Application for the Proposed 175 MW Wind Energy Facility and 345 kV Transmission Line in Hyde County, South Dakota**

Dear Ms. Morey:

Meridian Wind Project, LLC (Meridian Wind), a subsidiary of ENGIE North America, Inc. (ENGIE), is currently preparing to submit an application to the South Dakota Public Utilities Commission for an Energy Facility Permit for the Meridian Wind Project (Project), in compliance with Administrative Rules of South Dakota 20:10:22 and South Dakota Codified Law Ch. 49-41B. The total installed capacity of the wind energy facility will not exceed 175 megawatts (MW) and the 345 kilovolt (kV) transmission line will extend approximately 8.9 miles from east to west. Both the wind energy facility and the transmission line are being permitted at the state and local level.

The Project is located entirely within Hyde County, South Dakota, in the townships of Van Order, Eagle, Chappelle, Holabird, and Highmore as shown in Table 1 and the attached Figure 1. The Project boundary covers approximately 15,043 acres (Project area) and will consist of up to 77 wind turbines, electric collector lines, a central collector substation, access roads connecting to each turbine, and meteorological towers.

**Table 1. Project Location**

County Name	Township Name	Township	Range	Sections
Hyde	Van Order	111N	71W	1-13, 17-20
Hyde	Eagle	111N	72W	1-3, 7-13, 18, 24
Hyde	Chappelle	111N	73W	12, 13
Hyde	Holabird	112N	71W	27-29, 31-35
Hyde	Highmore	112N	72W	36

The Project will interconnect to the high-voltage transmission grid via a 345 kV interconnection switch station (Chappelle Station) located at the western end of the Project's transmission line. Chappelle Station will be owned and operated by Basin Electric Power Cooperative as part of the Triple H Wind Project. The Triple H Wind Project is located immediately west of State Highway 47 and will be built and operated by Meridian Wind's parent company by Summer 2020. The Triple H Wind Project was granted a permit to construct by the SDPUC on July 24, 2019 under EL19-007. In addition to utilizing Chappelle Station, Meridian Wind anticipates sharing the operations and maintenance facility and an Aircraft Detection Lighting System with the Triple H Wind Project.

The purpose of this letter is to introduce the Project and obtain input from the South Dakota Game, Fish, and Parks (SDGFP) regarding any potential concerns or issues that may exist within the Project area listed above that would influence a decision regarding the use of the land.





## State Listed Species

The Project reviewed the list of state threatened and/or endangered species known to exist within Hyde County as documented through the South Dakota Natural Heritage Database (Table 2).

**Table 2: State-listed species known or believed to occur in or near the Project Area**

Species	Status	Habitat	Project Evaluation
<b>Mammals</b>			
Swift fox ( <i>Vulpes velox</i> )	Threatened	Prefers open, rolling mixed grass and short-grass prairies with little or no shrubs, as well as mixed agricultural use.	Herbaceous and agricultural areas within the Project area could potentially provide suitable habitat for the Swift fox, however there are no known occurrences in Hyde County.
<b>Birds</b>			
Whooping Crane ( <i>Grus americana</i> )	Endangered	Breeds in the Northwest Territories of Canada and winters in Aransas National Wildlife Refuge in Texas. Each spring and fall, 95 percent of this population travels within a 180-mile wide migration corridor through the Dakotas, Nebraska, Kansas, and Oklahoma. Prefers stopovers in croplands interspersed with palustrine wetlands.	The Project area provides suitable whooping crane habitat in the form of herbaceous cover and cropland interspersed with palustrine wetlands. The Project area is located within the 75 and 80% migration corridor. The widespread availability of suitable stopover habitat indicates that if cranes are displaced from suitable habitat by development of the current Project, they are likely to find similar habitat nearby.
Interior least tern ( <i>Sternula antillarum athalassos</i> )	Endangered	Breeds along barren areas near waters and prefers open habitat with sand and gravel within a wide, unobstructed river channel, or open flats along the shorelines of lakes and rivers.	Interior least terns can be found anywhere in Hyde County during migration and breeding season; however, no suitable nesting habitat was found within the Project area
Piping plover ( <i>Charadrius melodus</i> )	Threatened	Nests and forages along shorelines of small lakes, large beaches, river islands, or industrial pond shorelines. Critical habitat is designated along Missouri River and the Oahe Reservoir in Hughes County, South Dakota.	Surveys of off-river sites have found a few Piping plover nests in alkali lakes in central South Dakota, but the major alkaline lakes are located outside of the Project area.
<b>Fish</b>			
Pallid Sturgeon ( <i>Scaphirhynchus albus</i> )	Endangered	Adapted to sandy areas with fine substrates, floodplains, backwaters, chutes, sloughs, islands, sandbars, and main channel waters within large river ecosystems.	Although potential/verified occurrence of the pallid sturgeon has been reported for all counties that are contiguous with the Missouri River, its geographic range falls outside the Project area and is unlikely to occur with the Project area.

The Project would be designed to avoid resources such as wetlands, surface waters, sensitive habitats, protected species, and historic or cultural areas to the extent possible. Potential impacts to soil and surface water resources would be minimized or avoided by using erosion and sedimentation control best management practices during construction. Meridian Wind respectfully requests comments from SDGFP regarding the list of special-status species and their associated habitats. Specifically, Meridian Wind requests locations of any known eagle nests that would affect Project construction.



Upon your review, we ask that the SDGFP send a written response to the address below, stating specific findings, concerns, further requirements, or concurrence with the Project related species evaluation presented in Table 2. If you require any further information, such as shapefiles or other maps, please do not hesitate to contact me. Any resulting information will be used to help guide Project development in a manner that identifies and avoids impacts to sensitive resources where practicable.

If you have any questions regarding the information presented in this letter, please contact me at ENGIE, 805-569-6185, or at [Casey.Willis@engie.com](mailto:Casey.Willis@engie.com). Thank you for your assistance regarding the Project.

Respectfully submitted,

A handwritten signature in blue ink, appearing to read "Casey Willis", is written over a light blue horizontal line.

**Casey Willis**

3760 State Street, Suite 200  
Santa Barbara, CA 93105

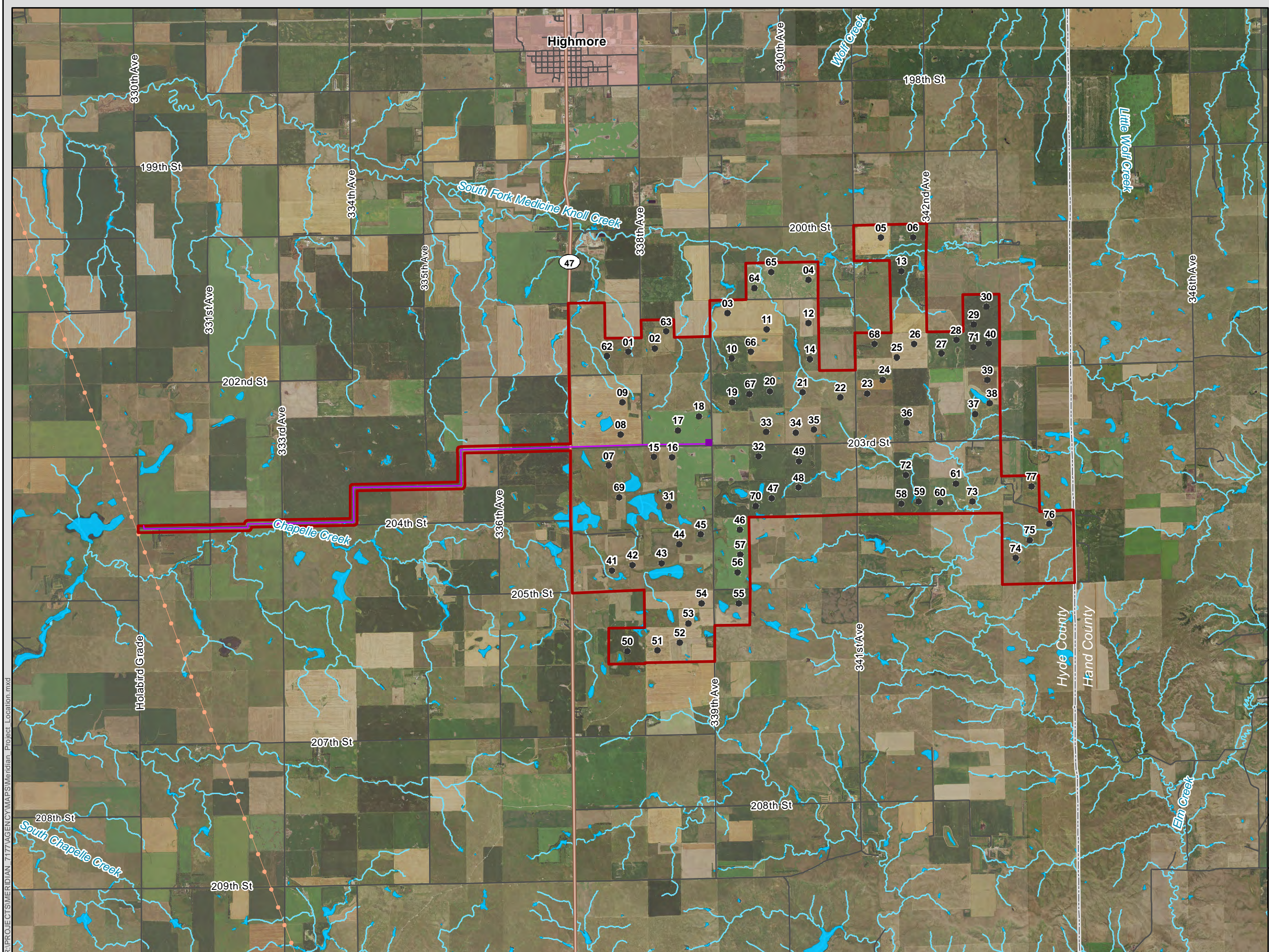
P: 805-569-6185

E: [Casey.Willis@engie.com](mailto:Casey.Willis@engie.com)

cc:

Manuela Elizondo – Tetra Tech, Inc.  
Shaun Brooks – Tetra Tech, Inc.



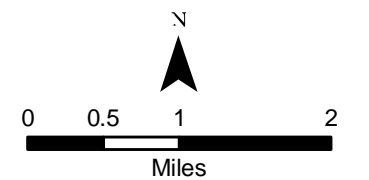


## Meridian Wind Project

### Project Location

Hyde County, South Dakota

- Project Area
- Proposed Turbine
- Proposed Transmission Line
- Potential Collection Substation Location
- Municipal Boundary
- County Boundary
- State Highway
- Local Road
- Existing 345 kV Transmission Line
- NHD Intermittent Stream
- NHD Waterbody







February 24, 2020

Chairman Eric Odenbach  
South Dakota Aeronautics Commission  
Office of Air, Rail and Transit  
Department of Transportation  
700 E Broadway Ave  
Pierre, SD 57501

**Subject: Meridian Wind Project Energy Facility Permit Application for the Proposed 175 MW Wind Energy Facility and 345 kV Transmission Line in Hyde County, South Dakota**

Chairman Eric Odenbach:

Meridian Wind Project, LLC (Meridian Wind), a subsidiary of ENGIE North America, Inc. (ENGIE), is currently preparing to submit an application to the South Dakota Public Utilities Commission for an Energy Facility Permit for the Meridian Wind Project (Project), in compliance with Administrative Rules of South Dakota 20:10:22 and South Dakota Codified Law Ch. 49-41B. The total installed capacity of the wind energy facility will not exceed 175 megawatts (MW) and the 345 kilovolt (kV) transmission line will extend approximately 8.9 miles from east to west. Both the wind energy facility and the transmission line are being permitted at the state and local level.

The Project is located entirely within Hyde County, South Dakota, in the townships of Van Order, Eagle, Chappelle, Holabird, and Highmore as shown in Table 1 and the attached Figure 1. The Project boundary covers approximately 15,043 acres (Project area) and will consist of up to 77 wind turbines, electric collector lines, a central collector substation, access roads connecting to each turbine, and meteorological towers.

**Table 1. Project Location**

County Name	Township Name	Township	Range	Sections
Hyde	Van Order	111N	71W	1-13, 17-20
Hyde	Eagle	111N	72W	1-3, 7-13, 18, 24
Hyde	Chappelle	111N	73W	12, 13
Hyde	Holabird	112N	71W	27-29, 31-35
Hyde	Highmore	112N	72W	36

The Project will interconnect to the high-voltage transmission grid via a 345 kV interconnection switch station (Chappelle Station) located at the western end of the Project's transmission line. Chappelle Station will be owned and operated by Basin Electric Power Cooperative as part of the Triple H Wind Project. The Triple H Wind Project is located immediately west of State Highway 47 and will be built and operated by Meridian Wind's parent company by Summer 2020. The Triple H Wind Project was granted a permit to construct by the SDPUC on July 24, 2019 under EL19-007. In addition to utilizing Chappelle Station, Meridian Wind anticipates sharing the operations and maintenance facility and an Aircraft Detection Lighting System with the Triple H Wind Project.

The purpose of this letter is to introduce the Project and obtain input from the South Dakota Department of Transportation, South Dakota Aeronautics Commission regarding any potential concerns or issues that may exist within the Project area listed above that would influence a decision regarding the use of the land.





If you require any further information, such as shapefiles or other maps, please do not hesitate to contact me. Any resulting information will be used to help guide Project development in a manner that identifies and avoids impacts to sensitive resources where practicable.

If you have any questions regarding the information presented in this letter, please contact me at ENGIE, 805-569-6185, or at [Casey.Willis@engie.com](mailto:Casey.Willis@engie.com). Thank you for your assistance regarding the Project.  
Respectfully submitted,

A handwritten signature in blue ink, appearing to read "Casey Willis", with a horizontal line drawn underneath.

**Casey Willis**

3760 State Street, Suite 200  
Santa Barbara, CA 93105

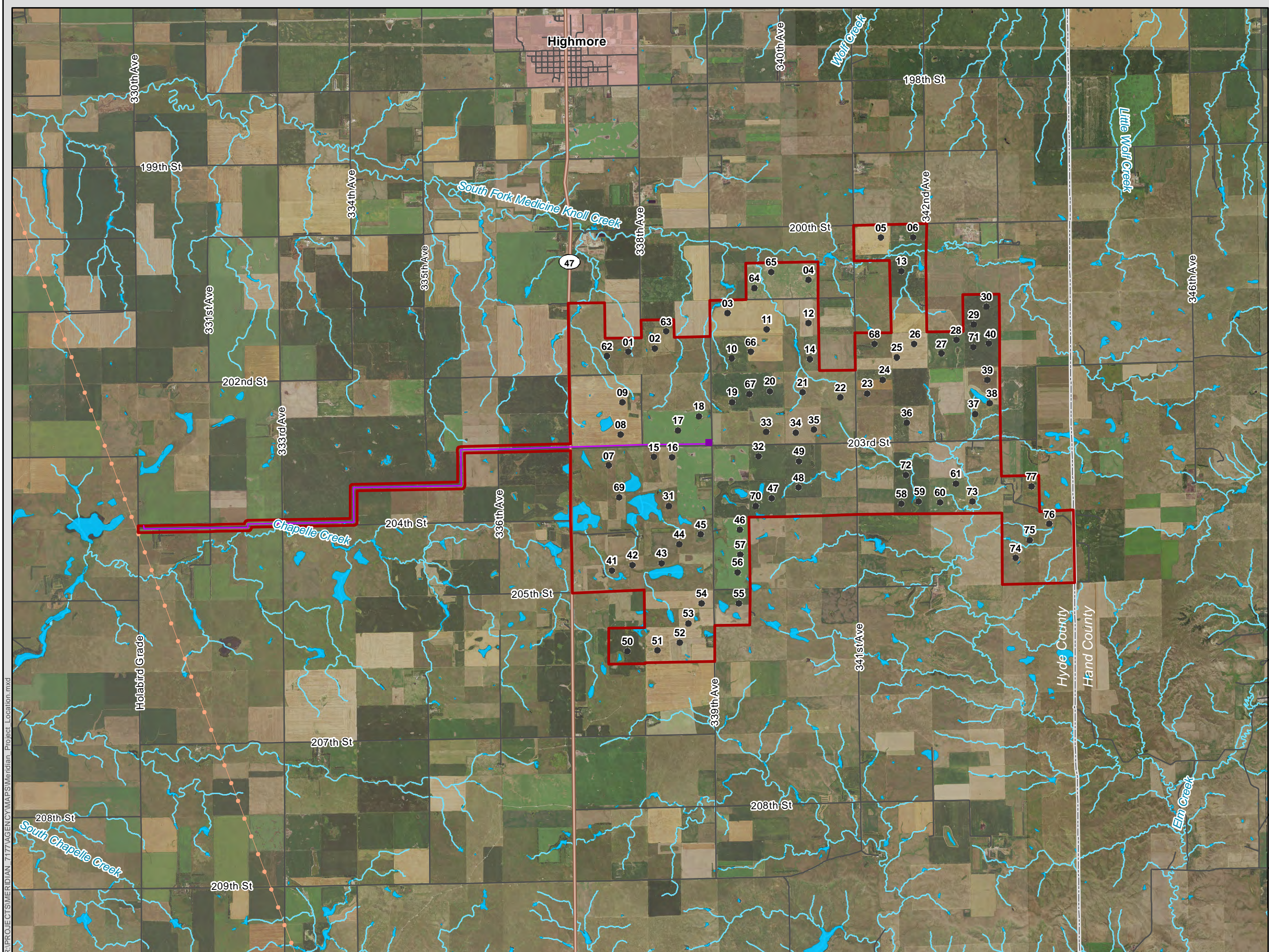
P: 805-569-6185

E: [Casey.Willis@engie.com](mailto:Casey.Willis@engie.com)

cc:

Manuela Elizondo – Tetra Tech, Inc.  
Shaun Brooks – Tetra Tech, Inc.



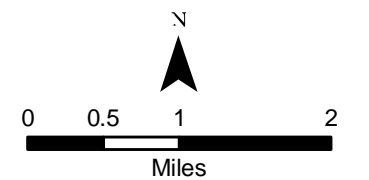


## Meridian Wind Project

### Project Location

Hyde County, South Dakota

- Project Area
- Proposed Turbine
- Proposed Transmission Line
- Potential Collection Substation Location
- Municipal Boundary
- County Boundary
- State Highway
- Local Road
- Existing 345 kV Transmission Line
- NHD Intermittent Stream
- NHD Waterbody







February 24, 2020

Mr. Jack Dokken  
South Dakota Department of Transportation  
Office of Aeronautics Services  
Air, Rail & Transit Program Manager  
Becker-Hansen Building  
700 E Broadway Ave  
Pierre, SD 57501

**Subject: Meridian Wind Project Energy Facility Permit Application for the Proposed 175 MW Wind Energy Facility and 345 kV Transmission Line in Hyde County, South Dakota**

Dear Mr. Dokken:

Meridian Wind Project, LLC (Meridian Wind), a subsidiary of ENGIE North America, Inc. (ENGIE), is currently preparing to submit an application to the South Dakota Public Utilities Commission for an Energy Facility Permit for the Meridian Wind Project (Project), in compliance with Administrative Rules of South Dakota 20:10:22 and South Dakota Codified Law Ch. 49-41B. The total installed capacity of the wind energy facility will not exceed 175 megawatts (MW) and the 345 kilovolt (kV) transmission line will extend approximately 8.9 miles from east to west. Both the wind energy facility and the transmission line are being permitted at the state and local level.

The Project is located entirely within Hyde County, South Dakota, in the townships of Van Order, Eagle, Chappelle, Holabird, and Highmore as shown in Table 1 and the attached Figure 1. The Project boundary covers approximately 15,043 acres (Project area) and will consist of up to 77 wind turbines, electric collector lines, a central collector substation, access roads connecting to each turbine, and meteorological towers.

**Table 1. Project Location**

County Name	Township Name	Township	Range	Sections
Hyde	Van Order	111N	71W	1-13, 17-20
Hyde	Eagle	111N	72W	1-3, 7-13, 18, 24
Hyde	Chappelle	111N	73W	12, 13
Hyde	Holabird	112N	71W	27-29, 31-35
Hyde	Highmore	112N	72W	36

The Project will interconnect to the high-voltage transmission grid via a 345 kV interconnection switch station (Chappelle Station) located at the western end of the Project's transmission line. Chappelle Station will be owned and operated by Basin Electric Power Cooperative as part of the Triple H Wind Project. The Triple H Wind Project is located immediately west of State Highway 47 and will be built and operated by Meridian Wind's parent company by Summer 2020. The Triple H Wind Project was granted a permit to construct by the SDPUC on July 24, 2019 under EL19-007. In addition to utilizing Chappelle Station, Meridian Wind anticipates sharing the operations and maintenance facility and an Aircraft Detection Lighting System with the Triple H Wind Project.

The purpose of this letter is to introduce the Project and obtain input from the South Dakota Department of Transportation, Office of Aeronautics Services regarding any potential concerns or issues that may exist within the Project area listed above that would influence a decision regarding the use of the land.



If you require any further information, such as shapefiles or other maps, please do not hesitate to contact me. Any resulting information will be used to help guide Project development in a manner that identifies and avoids impacts to sensitive resources where practicable.

If you have any questions regarding the information presented in this letter, please contact me at ENGIE, 805-569-6185, or at [Casey.Willis@engie.com](mailto:Casey.Willis@engie.com). Thank you for your assistance regarding the Project.  
Respectfully submitted,

A handwritten signature in blue ink, appearing to read "Casey Willis", is positioned above the printed name.

**Casey Willis**

3760 State Street, Suite 200  
Santa Barbara, CA 93105

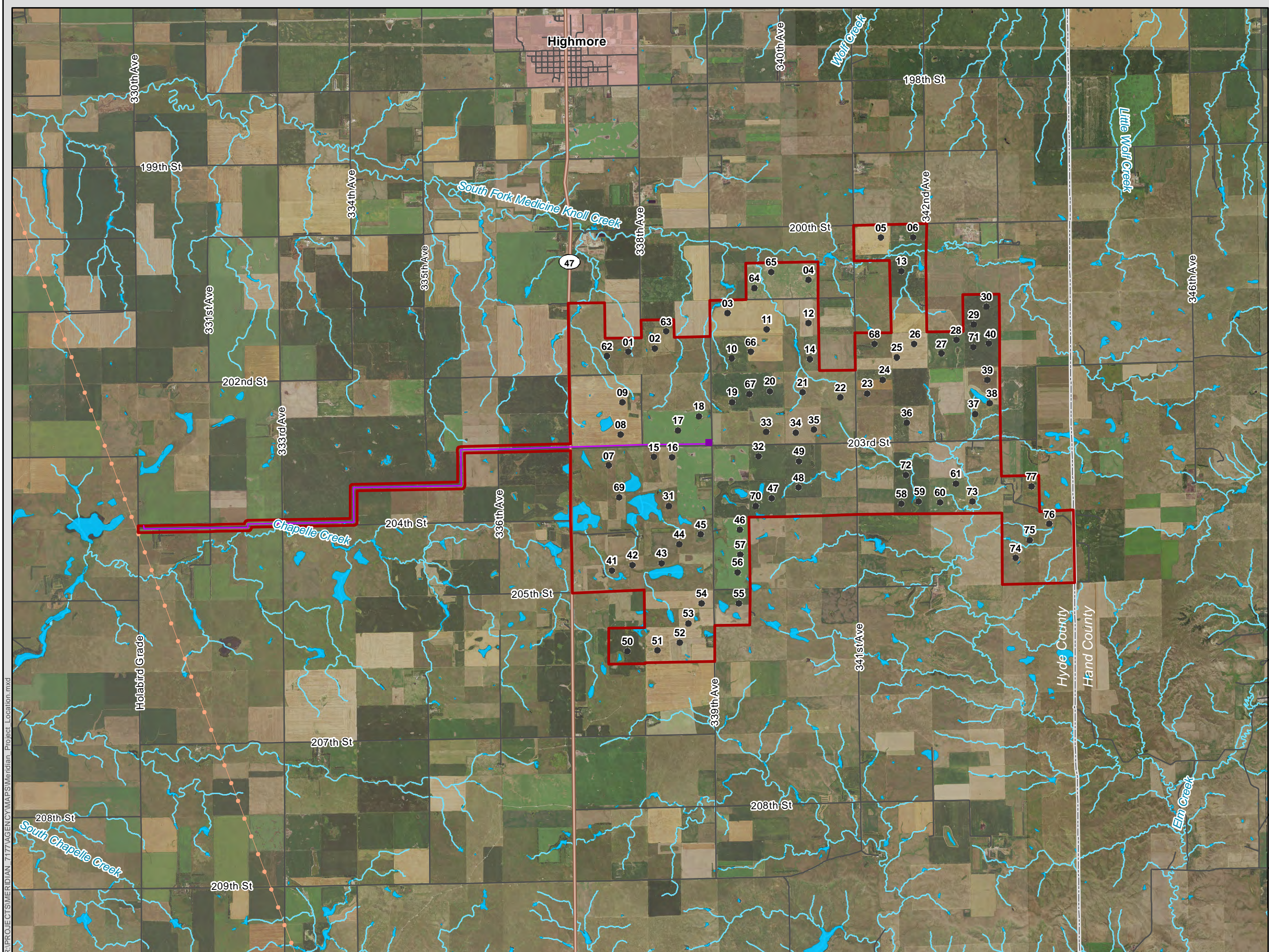
**P:** 805-569-6185

**E:** [Casey.Willis@engie.com](mailto:Casey.Willis@engie.com)

cc:

Manuela Elizondo – Tetra Tech, Inc.  
Shaun Brooks – Tetra Tech, Inc.



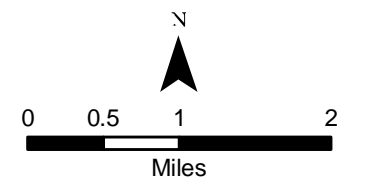


## Meridian Wind Project

### Project Location

Hyde County, South Dakota

- Project Area
- Proposed Turbine
- Proposed Transmission Line
- Potential Collection Substation Location
- Municipal Boundary
- County Boundary
- State Highway
- Local Road
- Existing 345 kV Transmission Line
- NHD Intermittent Stream
- NHD Waterbody







February 24, 2020

Mr. Jay D. Vogt  
South Dakota State Historical Society  
State Historic Preservation Officer  
900 Governors Dr  
Pierre, SD 57501

**Subject: Meridian Wind Project Energy Facility Permit Application for the Proposed 175 MW Wind Energy Facility and 345 kV Transmission Line in Hyde County, South Dakota**

Dear Mr. Vogt:

Meridian Wind Project, LLC (Meridian Wind), a subsidiary of ENGIE North America, Inc. (ENGIE), is currently preparing to submit an application to the South Dakota Public Utilities Commission for an Energy Facility Permit for the Meridian Wind Project (Project), in compliance with Administrative Rules of South Dakota 20:10:22 and South Dakota Codified Law Ch. 49-41B. The total installed capacity of the wind energy facility will not exceed 175 megawatts (MW) and the 345 kilovolt (kV) transmission line will extend approximately 8.9 miles from east to west. Both the wind energy facility and the transmission line are being permitted at the state and local level.

The Project is located entirely within Hyde County, South Dakota, in the townships of Van Order, Eagle, Chappelle, Holabird, and Highmore as shown in Table 1 and the attached Figure 1. The Project boundary covers approximately 15,043 acres (Project area) and will consist of up to 77 wind turbines, electric collector lines, a central collector substation, access roads connecting to each turbine, and meteorological towers.

**Table 1. Project Location**

County Name	Township Name	Township	Range	Sections
Hyde	Van Order	111N	71W	1-13, 17-20
Hyde	Eagle	111N	72W	1-3, 7-13, 18, 24
Hyde	Chappelle	111N	73W	12, 13
Hyde	Holabird	112N	71W	27-29, 31-35
Hyde	Highmore	112N	72W	36

The Project will interconnect to the high-voltage transmission grid via a 345 kV interconnection switch station (Chappelle Station) located at the western end of the Project's transmission line. Chappelle Station will be owned and operated by Basin Electric Power Cooperative as part of the Triple H Wind Project. The Triple H Wind Project is located immediately west of State Highway 47 and will be built and operated by Meridian Wind's parent company by Summer 2020. The Triple H Wind Project was granted a permit to construct by the SDPUC on July 24, 2019 under EL19-007. In addition to utilizing Chappelle Station, Meridian Wind anticipates sharing the operations and maintenance facility and an Aircraft Detection Lighting System with the Triple H Wind Project.

The purpose of this letter is to introduce the Project and obtain input from the South Dakota State Historical Society, State Historic Preservation Office regarding any potential concerns or issues that may exist within the Project area listed above that would influence a decision regarding the use of the land. The Project would be designed to avoid resources such as wetlands, surface waters, sensitive habitats, protected species, and historic or cultural areas to the extent possible. Potential impacts to soil and surface water resources would be minimized or avoided by using erosion and sedimentation control best





management practices during construction.

Beaver Creek Archaeology, on behalf of Meridian Wind, performed a Level I Record Search for the Project area and a one-mile buffer (the Research Area) using data provided by the South Dakota State Archaeological Research Center (SARC). The record search indicated that three previous archaeological surveys have been conducted within the sections where the proposed Project is located; however, none of these previous surveys overlap the Project area. In addition, one archaeological site and three historic architectural structures are within the Research Area (Table 2). These resources, 39HE0039, HE00000018, HE00000031, and HE00000035, are located outside of the Project area and thus will not be affected by Project construction as currently planned.

**Table 2. Previously Recorded Cultural Resources**

SHPO ID	Affiliation	Description	NRHP Status
39HE0039	Period Unknown	Native American Artifact Scatter	Unevaluated
HE00000018	Architectural	Bridge #35-130-282	Not Eligible
HE00000031	Architectural	Harry Bawdon Barn	Not Eligible
HE00000033	Architectural	Bridge #35-150-285	Not Eligible

SHPO = State Historic Preservation Office; ID = Identification

If you require any further information, such as shapefiles or other maps, please do not hesitate to contact me. Any resulting information will be used to help guide Project development in a manner that identifies and avoids impacts to sensitive resources where practicable.

If you have any questions regarding the information presented in this letter, please contact me at ENGIE, 805-569-6185, or at [Casey.Willis@engie.com](mailto:Casey.Willis@engie.com). Thank you for your assistance regarding the Project.

Respectfully submitted,

**Casey Willis**

3760 State Street, Suite 200  
Santa Barbara, CA 93105

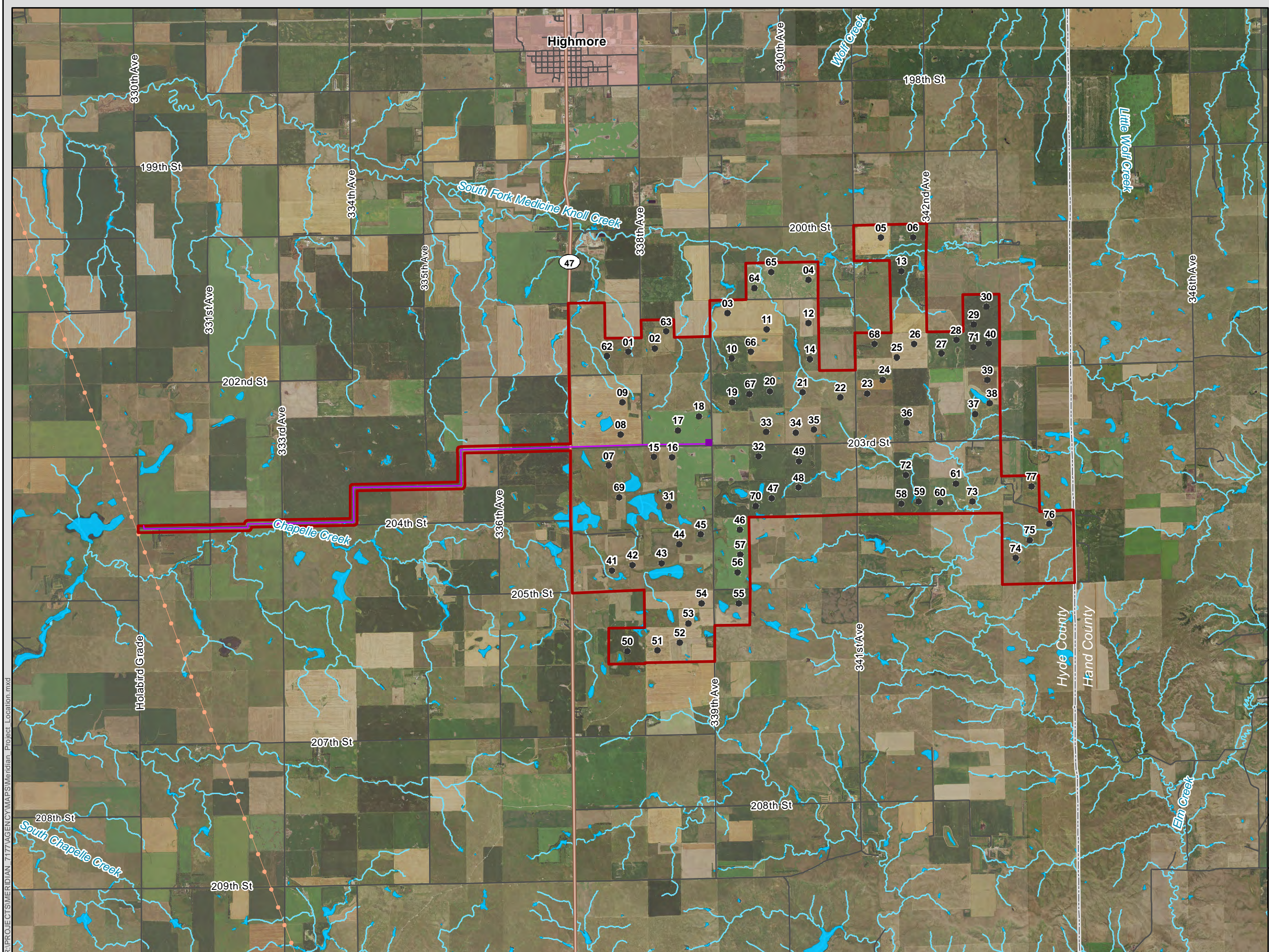
P: 805-569-6185

E: [Casey.Willis@engie.com](mailto:Casey.Willis@engie.com)

cc:

Manuela Elizondo – Tetra Tech, Inc.  
Shaun Brooks – Tetra Tech, Inc.





## Meridian Wind Project

### Project Location

Hyde County, South Dakota

- Project Area
- Proposed Turbine
- Proposed Transmission Line
- Potential Collection Substation Location
- Municipal Boundary
- County Boundary
- State Highway
- Local Road
- Existing 345 kV Transmission Line
- NHD Intermittent Stream
- NHD Waterbody

