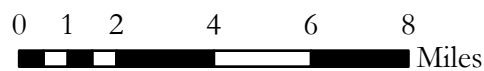
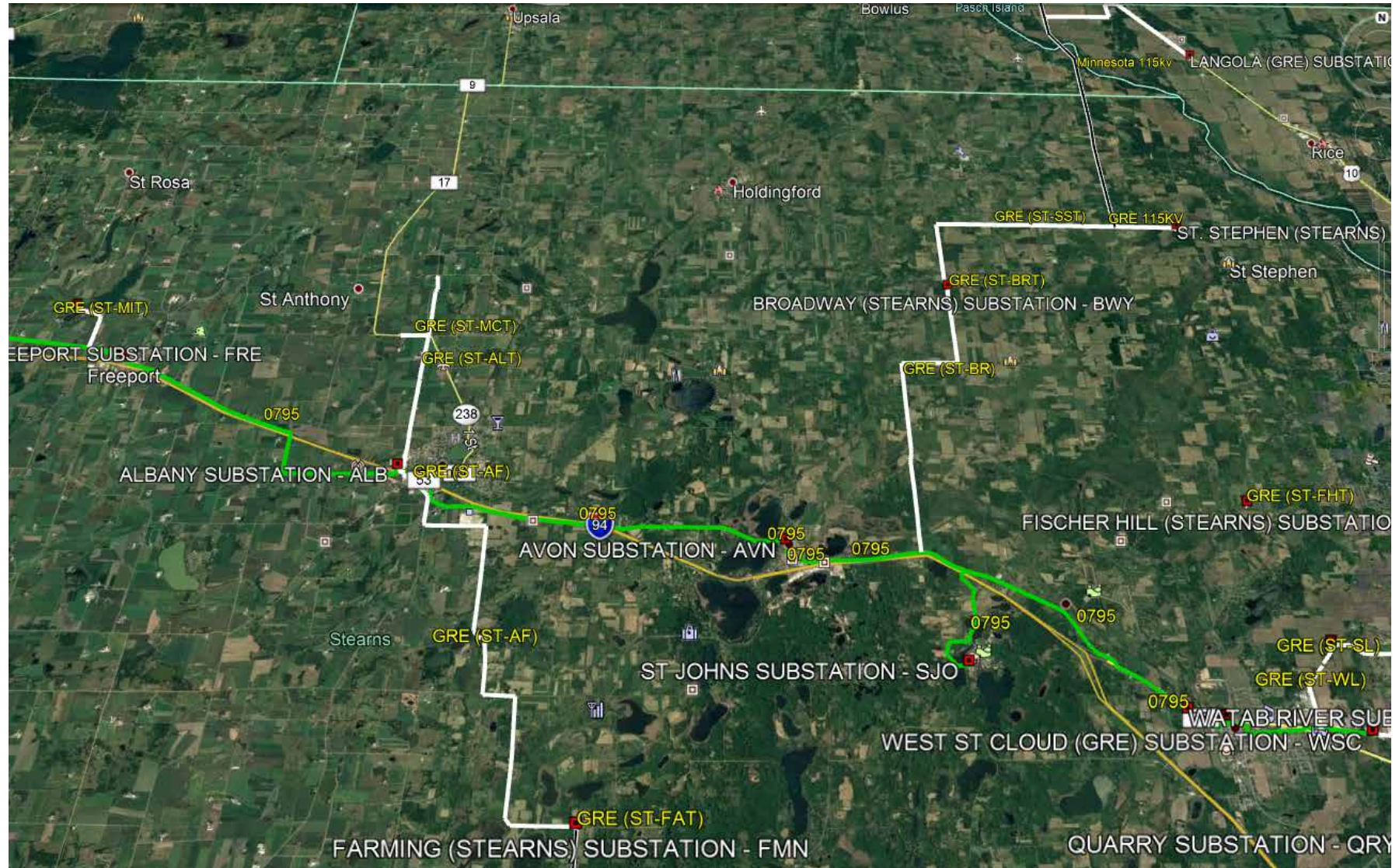


Huntley - Wilmarth  
Approved Route



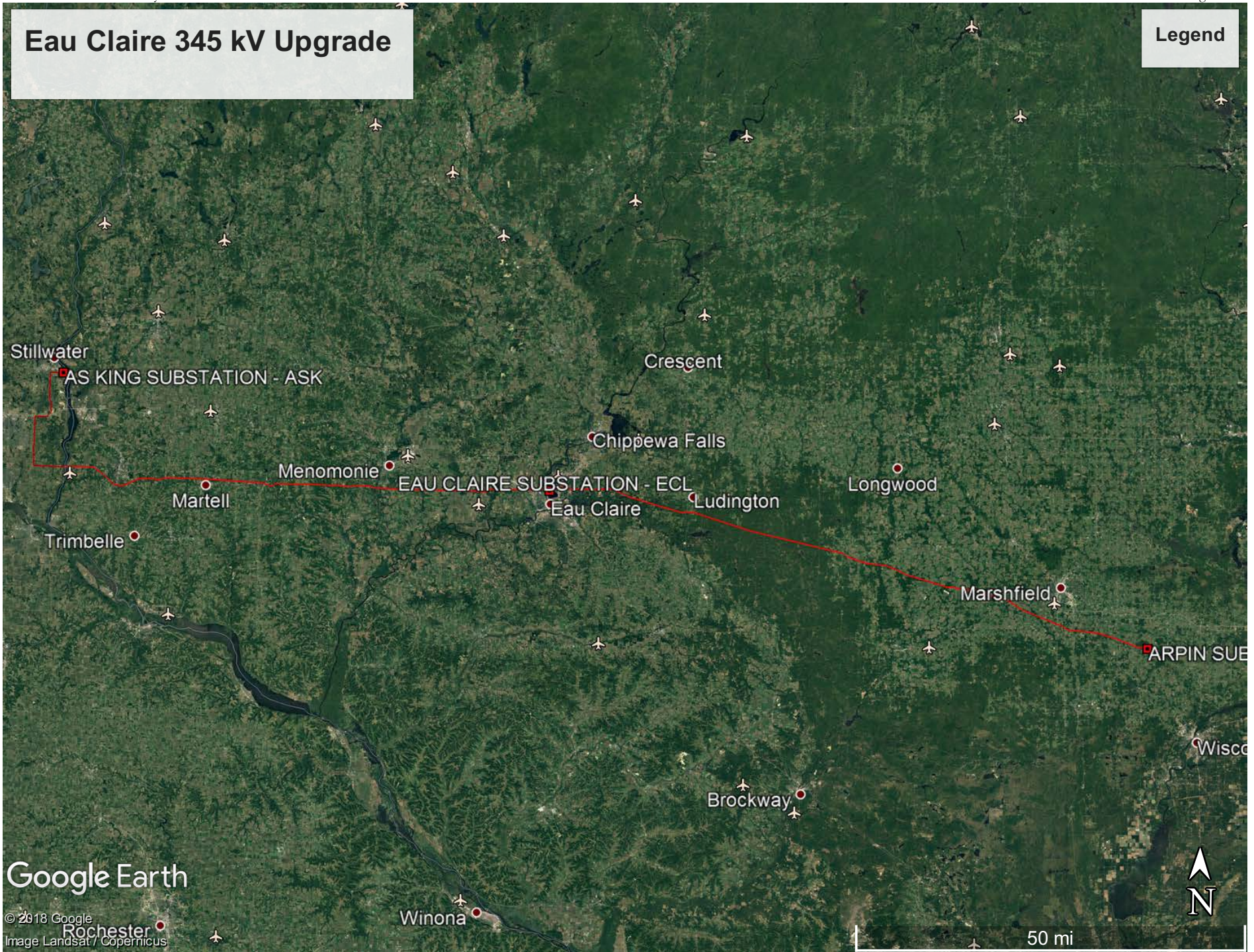
Northern States Power Company Minnesota  
State of South Dakota  
Transmission Cost Recovery Rider  
**West St. Cloud – Black Oak Route Map**





# Eau Claire 345 kV Upgrade

Legend

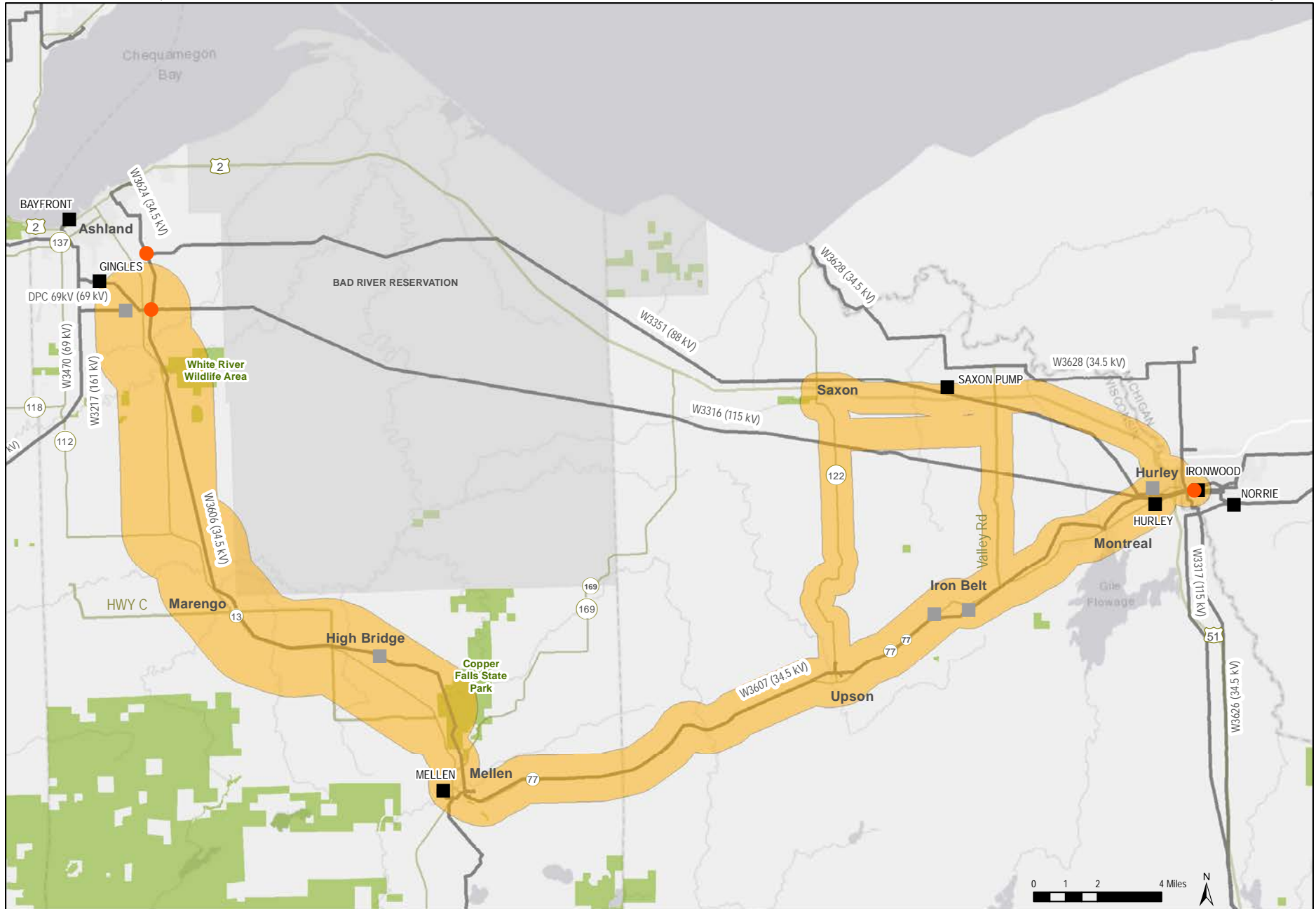


Google Earth

© 2018 Google  
Image Landsat / Copernicus

50 mi





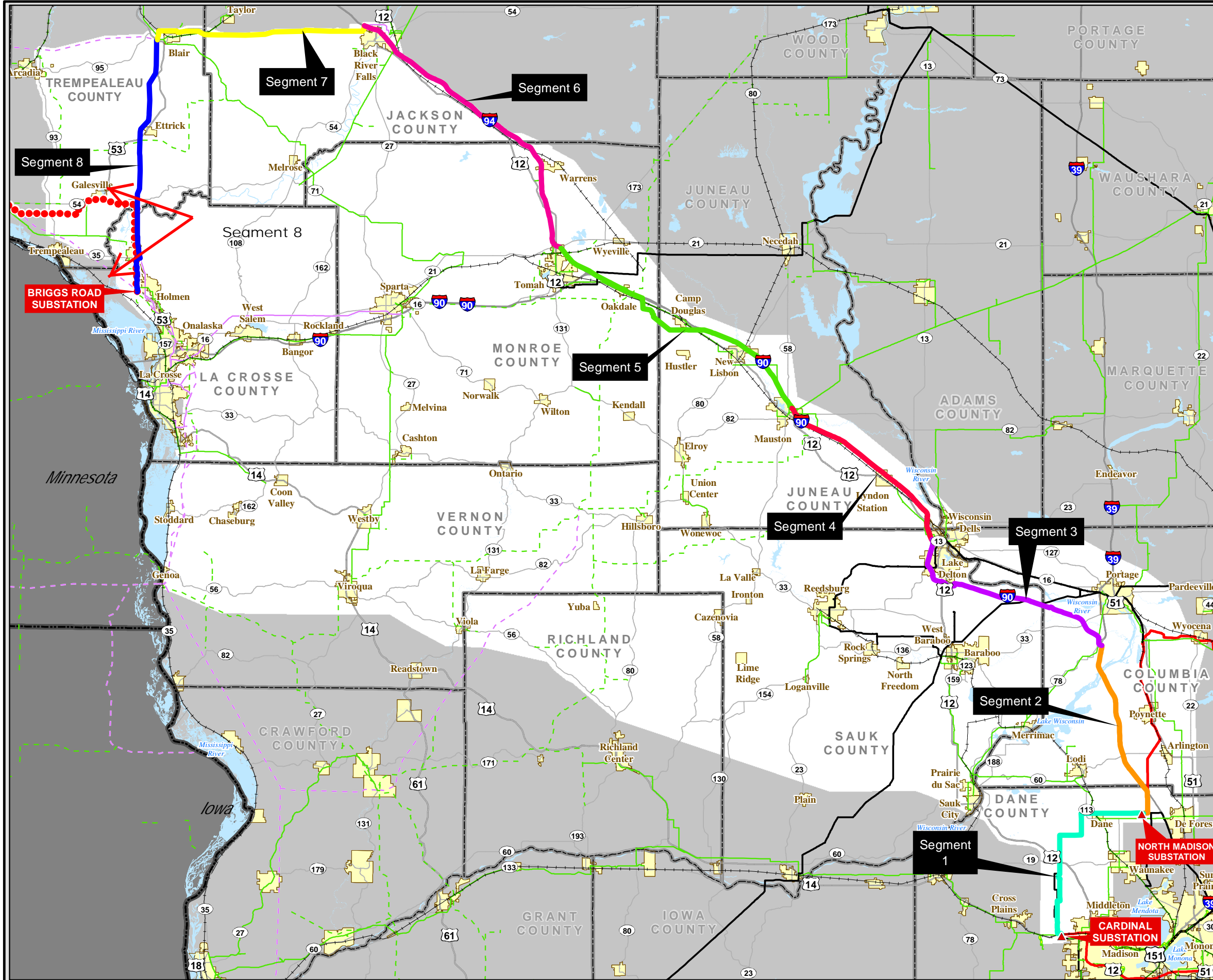
### Ashland - Ironwood Transmission Line Project Study Area

Xcel Energy August 2019

- Project End Points
- Xcel Energy Substations
- External Substation
- Roadway
- Transmission Lines
- Tribal Reservation Boundary
- Protected Areas
- Study Area



Disclaimer: This information is believed to be correct, but is subject to change and carries no warranty. Data courtesy of Xcel Energy, Bad River Indian Reservation and ESRI.



## Approved Route

### BADGER COULEE 345-KV TRANSMISSION LINE PROJECT

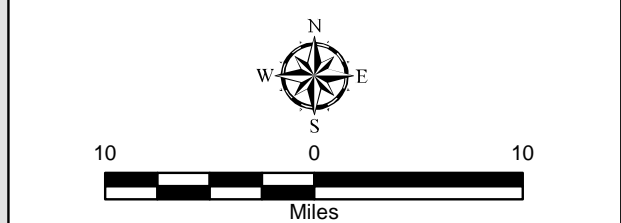


- Badger Coulee Construction Segments
- |  |   |  |   |  |   |  |   |
|--|---|--|---|--|---|--|---|
|  | 1 |  | 3 |  | 5 |  | 7 |
|  | 2 |  | 4 |  | 6 |  | 8 |
- Approved CapX2020  
 Hampton-Rochester-La Crosse  
 345-kV Transmission Project

*EXISTING ATC OR NSPW TRANSMISSION LINES*

	Substation		Interstate, US or State Highway
	69 kV		Railroad
	69 kV Underground		
	161 kV		
	138 kV		
	345 kV		

	Outside Study Area		EXISTING SUBSTATION
	Study Area		COUNTY BOUNDARY
			City/Village



The information presented in this map document is advisory and is intended for reference purposes only. Applicants' owned and operated facility locations are approximate.  
 Base Map Data Sources: ATC, WDNR, PSCW, NSPW, NNG, DPC, WDOT.  
 APRIL 2015