

BAT HABITAT ASSESSMENT FOR THE PROPOSED CROWNED RIDGE WIND II FACILITY, CODINGTON, DEUEL, AND GRANT COUNTIES, SOUTH DAKOTA

FEBRUARY 2019

PREPARED FOR

Crowned Ridge Wind II, LLC

PREPARED BY

SWCA Environmental Consultants

**BAT HABITAT ASSESSMENT FOR THE
PROPOSED CROWNED RIDGE II WIND FACILITY,
CODINGTON, DEUEL, AND GRANT COUNTIES, SOUTH
DAKOTA**

Prepared for

Crowned Ridge Wind II, LLC
700 Universe Boulevard
Juno Beach, Florida 33408

Prepared by

SWCA Environmental Consultants
116 North 4th Street, Suite 200
Bismarck, North Dakota 58501
(701) 258-6622
www.swca.com

SWCA Project No. 44512

February 2019

CONTENTS

1	Introduction	1
1.1	Project Overview.....	1
1.2	Environmental Setting.....	1
2	Bats of South Dakota	1
2.1	Species of Conservation Concern	3
3	Habitat Availability	3
4	Conclusion	9
5	Literature Cited	13

Figures

Figure 1.	Location of the study area.	2
Figure 2.	Aerial photography within the study area.	6
Figure 3.	U.S. Geological Survey land cover within the study area.....	7
Figure 4.	Water resources within the study area.	8
Figure 5.	Forest patch size analysis within the study area, indicating areas of suitable northern long-eared bat habitat.....	10
Figure 6.	Karst geology within the study area.....	11

Tables

Table 1.	Ecology and Distribution of Bat Species with Potential to Occur in Codington, Deuel, and Grant Counties, South Dakota.....	4
Table 2.	Land Cover Classifications within the Study Area, Codington, Deuel, and Grant Counties, South Dakota	5
Table 3.	Habitat Availability and Suitability and Seasonal Likelihood of Occurrence for Bats with Potential to Occur within the Study Area, Codington, Deuel, and Grant Counties, South Dakota	12

This page intentionally left blank.

1 INTRODUCTION

1.1 Project Overview

Crowned Ridge Wind II, LLC, a wholly owned indirect subsidiary of NextEra Energy Resources, LLC, plans to develop an approximately 300-megawatt wind facility known as the Crowned Ridge II Wind Energy Facility (the project) in Codington, Deuel, and Grant Counties, South Dakota (see project boundary, Figure 1). The proposed project also includes an on-site generation tie line. This line is located within the project boundary. Crowned Ridge Wind II, LLC, has entered into a purchase and sale agreement under which it will permit and construct the project (including the on-site generation tie line) and, thereafter, transfer the project, along with its Facility Permits, to Northern States Power at the commercial operations date. For the purposes of this assessment, the study area consisted of an approximately 56,645-acre area (see study area, Figure 1).

The purpose of this report is to assess the availability and suitability of bat habitat within the study area, to determine the potential for presence of state-listed and federally listed bat species, and to provide a context for regulations relative to those species.

1.2 Environmental Setting

Ecoregions are delineated based on the continuity of natural resource availability, vegetation communities, and other factors (Bryce et al. 1998). The U.S. Environmental Protection Agency and the Commission for Environmental Cooperation defined a hierarchy of ecoregions at various scales, with Level I ecoregions being the coarsest level defined at the global scale, through Level III at the national scale (Commission for Environmental Cooperation 1997). Bryce et al. (1998) defined smaller Level IV ecoregions at a regional scale within the Level III ecoregions for the states of North Dakota and South Dakota.

The project is located within the Level IV Prairie Coteau and Big Sioux Basin ecoregions, which are subdivisions of the Level III Northern Glaciated Plateau ecoregion (Bryce et al. 1998). The Prairie Coteau ecoregion resulted from stagnant glacial ice melting beneath a layer of sediment, and it is dominated by a tightly undulating, hummocky landscape with no drainage pattern. This ecoregion has large chains of lakes and scattered semi-permanent or seasonal wetlands (Bryce et al. 1998). The Big Sioux Basin ecoregion is within the surrounding Prairie Coteau ecoregion and differs from that region in that it has a well-defined drainage network and gentler topography (Bryce et al. 1998).

2 BATS OF SOUTH DAKOTA

Several sources were reviewed to identify bat species with potential to occur within Codington, Deuel, and Grant Counties, South Dakota. These sources are as follows.

- South Dakota Bat Working Group
- South Dakota Department of Game, Fish, and Parks (SDGFP) *South Dakota Wildlife Action Plan* (SDWAP) (SDGFP 2014)
- *Annotated Checklist of Bats from South Dakota* (Jones and Genoways 1967)
- NatureServe (Hammerson 2015a–2015d)
- *Guide to Mammals of the Plains States* (Jones et al. 1985)

Bat Habitat Assessment for the Proposed Crowned Ridge Wind II Facility,
 Codington, Deuel, and Grant Counties, South Dakota

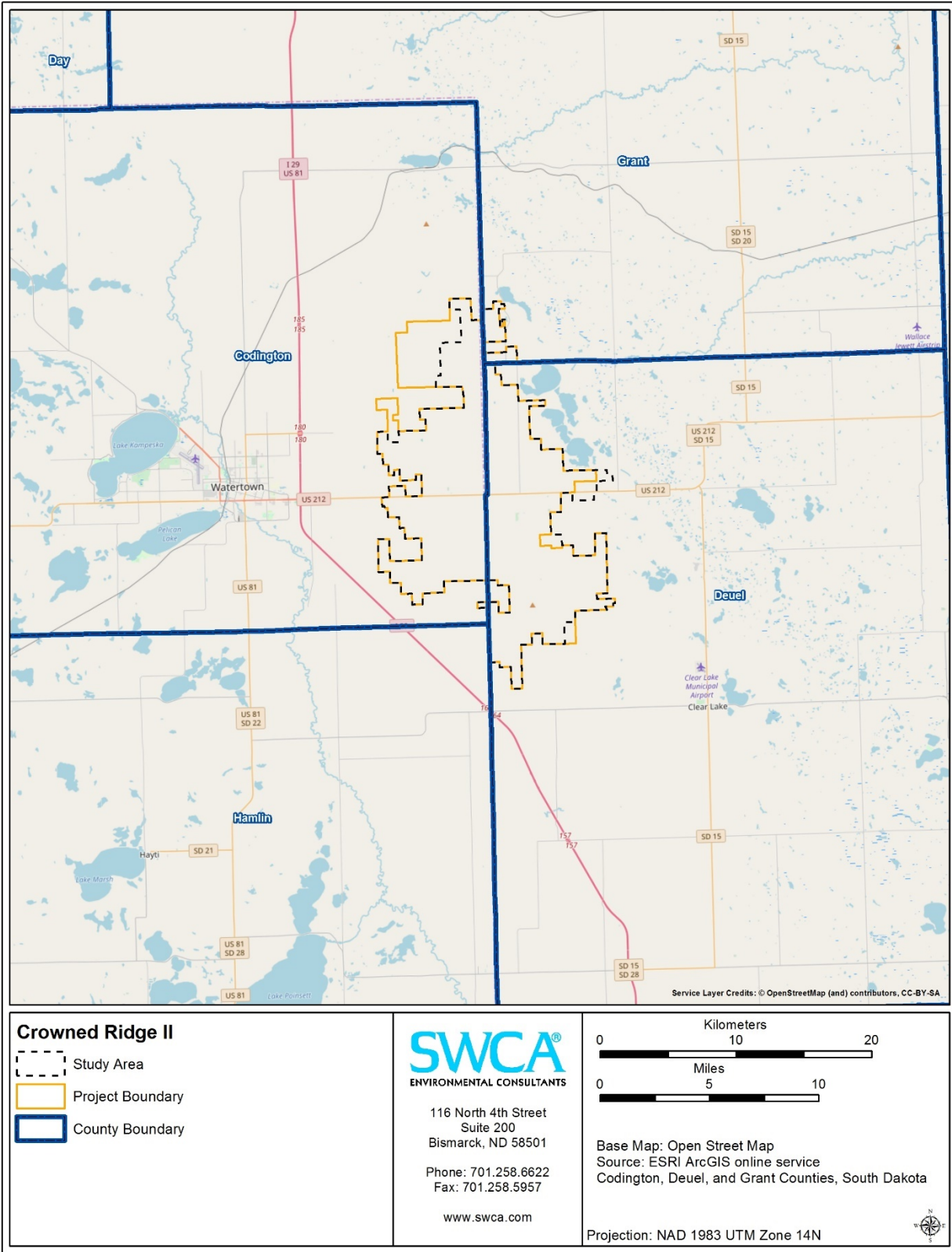


Figure 1. Location of the study area.

The U.S. Fish and Wildlife Service (USFWS) (USFWS 2017) threatened and endangered species list; the threatened, endangered, and candidate species list of South Dakota (SDGFP 2017); and the SDWAP (SDGFP 2014) were cross-referenced with the list of bat species with potential to occur within Codington, Deuel, and Grant Counties to identify state-listed or federally listed species and species described in the SDWAP as having established, state-specific, non-regulatory conservation recommendations. The results of this cross reference are summarized in Table 1.

2.1 Species of Conservation Concern

For the purposes of this assessment, “species of conservation concern” is defined as those that are currently listed as threatened or endangered at the state or federal level and those that are listed in the SDWAP.

The northern long-eared bat (*Myotis septentrionalis*) was listed as a threatened species with a 4(d) rule on April 2, 2016 (USFWS 2016) and is the only currently federally listed species with potential to occur within the study area. However, the USFWS confirmed that there are no known northern long-eared bat hibernacula or maternity roost trees in Codington, Deuel, and Grant Counties. Additionally, based on their records, the USFWS stated that while the species could occur in these counties, it is likely to only be a migrant, rather than a resident species (USFWS, personal communication 2018).

The northern long-eared bat 4(d) rule includes take prohibitions for specific activities in specific geographic areas. Purposeful take of northern long-eared bats without a permit is prohibited throughout the range of the species; however, incidental take without a permit is prohibited only within the “White-Nose Syndrome Zone.” The White-Nose Syndrome Zone is defined as all counties within 150 miles of a confirmed white-nose syndrome–positive county; the study area is within the White-Nose Syndrome Zone (USFWS 2016). Within the White-Nose Syndrome Zone, tree-clearing activities that occur in June or July and within 150 feet of a known maternity roost tree and that result in incidental take without a permit, are prohibited. Incidental take without a permit that results from tree-clearing activities within 0.25 mile of a known northern long-eared bat hibernaculum at any time of year is also prohibited. There currently is no prohibition of incidental take of northern long-eared bats that results from operation of a wind energy generation facility.

The SDWAP includes the northern long-eared bats and silver-haired bats (*Lasionycteris noctivagans*) as “species of greatest conservation need,” indicating that they are “species with characteristics that make them vulnerable” (SDGFP 2014). The SDWAP is an assessment of South Dakota’s fish and wildlife and associated habitat that provides conservation measures for long-term preservation of species of conservation concern (SDGFP 2014). The intent of the plan is to foster voluntary partnerships between governmental agencies, tribes, organizations, and private entities to help prevent fish and wildlife from becoming endangered. Listing on the SDWAP does not convey any regulatory status or authority.

3 HABITAT AVAILABILITY

The study area consists of 56,645 acres of primarily herbaceous and cultivated crop landcover. Topography is gently rolling, with more hills toward the eastern edge of the study area. Aerial photography and the National Land Cover Dataset (NLCD) (Homer et al. 2015) were used to determine the quantities and distribution of land cover types within the study area (Table 2; Figures 2 and 3).

Table 1. Ecology and Distribution of Bat Species with Potential to Occur in Codington, Deuel, and Grant Counties, South Dakota

Common Name	Scientific Name	Status	Species Ecology
Red bat	<i>Lasiurus borealis</i>	-	Red bats are a common species throughout their range and are found throughout South Dakota in both coniferous and deciduous forested areas (Jones and Genoways 1967). It is hypothesized that red bats migrate to South Dakota in April and leave the state in late August or early September (Swier 2003).
Silver-haired bat	<i>Lasionycteris noctivagans</i>	State: <i>Rare</i> , SDWAP*	Silver-haired bats are relatively uncommon throughout their range and erratically distributed (Kunz 1982). Jones and Genoways (1967) suggested the silver-haired bat was a migrant only; however, Swier (2003) captured individuals in July, showing that some are likely summer residents. The species roosts in trees under bark, in cavities, and snags (Mattson et al. 1996), typically in cottonwood forests in eastern South Dakota (Swier 2003). Silver-haired bats migrate great distances in spring and early fall (Kunz 1982).
Hoary bat	<i>Lasiurus cinereus</i>	-	Hoary bats are South Dakota's largest bats and are widespread, though usually not found in great densities (Jones and Genoways 1967; Shump and Shump 1982). Hoary bats roost in trees generally near a water source (Swier 2003) and forage at a higher altitude, relative to other bat species. The species migrates south for the winter, leaving in late August and returning in early June (Turner 1974).
Northern long-eared bat	<i>Myotis septentrionalis</i>	Federal: <i>Threatened</i> State: <i>Rare</i> , SDWAP*	Within South Dakota, the northern long-eared bat is likely restricted to large, riparian forests along the Missouri River (Swier 2003). The USFWS considers the species potentially present state-wide; however, there are no records of the species from Codington, Deuel, and Grant Counties or the adjacent counties (USFWS, personal communication 2018). Northern long-eared bats are typically found near water and dense forest conditions, both coniferous and riparian; roost sites consist of exfoliating bark and tree cavities, open buildings, and caves or mines; winter hibernacula are frequently caves or mines (SDGFP 2014). During the summer, northern long-eared bats roost in trees with cracks, crevices, or exfoliating bark, and human-made structures (USFWS 2016). The species hibernates in caves or cave-like structures during the winter (USFWS 2016).
Little brown bat	<i>Myotis lucifugus</i>	-	Little brown bats are considered a common species and a generalist capable of exploiting many habitats. The species is historically commonly found throughout South Dakota (Higgins et al. 2000; Jones et al. 1985). Foraging and roosting areas are selected opportunistically (Fenton and Barclay 1980), though deciduous forests and urban areas appear to support the species more often (Swier 2003). Little brown bat roosts include human-made structures, trees, caves, and mines (Fenton and Barclay 1980) and the species forages over water (Swier 2003). The species migrates between summer maternity grounds and hibernacula in spring and fall (Fenton and Barclay 1980).
Big brown bat	<i>Eptesicus fuscus</i>	-	Big brown bats are common throughout nearly all of the United States, including South Dakota (Nowak and Paradiso 1983). Though forested areas are frequently used as foraging and roosting habitat, the big brown bat has become closely associated with urban areas and roosts in human-made structures (Nowak and Paradiso 1983). It is hypothesized that big brown bats summer in eastern South Dakota and migrate west to hibernate, though Swier (2003) recorded big brown bats in eastern South Dakota year-round.

* SDWAP: Species is addressed in the *South Dakota Wildlife Action Plan* (SDGFP 2014).

Table 2. Land Cover Classifications within the Study Area, Codington, Deuel, and Grant Counties, South Dakota

Land Cover Type	Area (acres)	Percent Composition (%)
Cultivated crops	32,530.83	57.43
Herbaceous	18,696.02	33.01
Developed, open space	2,179.75	3.85
Hay/pasture	2,143.23	3.78
Emergent herbaceous wetlands	278.89	0.49
Developed, low intensity	255.93	0.45
Deciduous forest	243.46	0.43
Developed, medium intensity	218.67	0.39
Open water	78.31	0.14
Barren land	11.56	0.02
Developed, high intensity	7.34	0.01
Shrub/scrub	1.33	<0.00
Total	56,645	100.00

The National Wetlands Inventory (USFWS 2012) and National Hydrography Dataset (U.S. Geological Survey 2009) were reviewed to determine the quantity and distribution of water sources and suitable foraging areas throughout the study area (Figure 4). There are several wetlands and other waterbodies throughout the study area, though the numerous large lakes present in this region are primarily outside of the study area. Streams within the study area are generally small headwater streams. These waterbodies can provide foraging grounds and water resources for all bat species. However, when compared to the water resources available outside of the study area, there are overall fewer and smaller features available within the study area.

Overall, forested area is extremely limited within the study area. According to the NLCD, forested areas comprises only 243 acres, or 0.43 percent of the study area. These areas consist primarily of tree lines, small woodlots, and minimal riparian corridors.

Forested areas are small and fragmented throughout the study area. This lack of forested area reduces the availability of summer habitat for forest-dwelling bat species. Each of the species with potential to occur within the study area are considered forest-dwelling species, though they exist on a spectrum of facultative to obligate forest species. The big brown bat (*Eptesicus fuscus*) and little brown bat (*Myotis lucifugus*) are well-adapted to urban settings and are likely to roost in human-made structures, though they naturally roost and forage in forested habitat; the red bat (*Lasiurus borealis*), silver-haired bat, and hoary bat (*Lasiurus cinereus*) are able to forage in urban settings, but they roost in forested habitat; and the northern long-eared bat is a forest obligate species that roosts and forages almost exclusively in forested habitat.

Beyond being forest-obligate species, northern long-eared bats are considered a forest interior species. White et al. (2017) note that the species rarely forages more than approximately 10 feet away from forest edges, indicating that the bats are unlikely to use open areas. A study of northern long-eared bats within a managed forest in West Virginia found that this species forages in areas with forest patch sizes between 114 and 161 acres (Owen et al. 2003). Research conducted in Michigan and Prince Edward Island, Canada, within a landscape dominated by agricultural activity showed that northern long-eared bats may use woodlots as small as 15 acres (Foster and Kurta 1999; Henderson and Broders 2008).

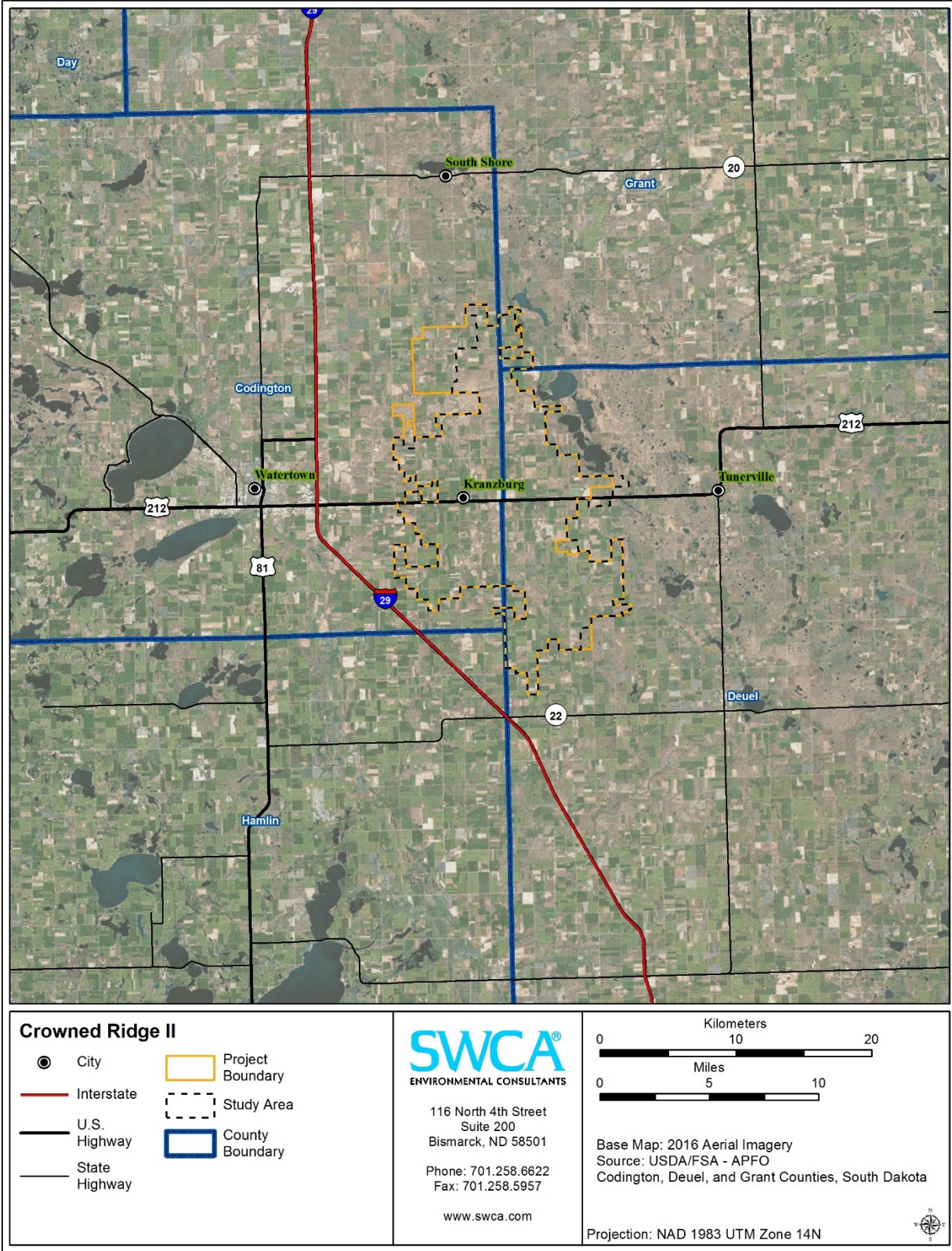


Figure 2. Aerial photography within the study area.

Bat Habitat Assessment for the Proposed Crowned Ridge Wind II Facility,
 Codington, Deuel, and Grant Counties, South Dakota

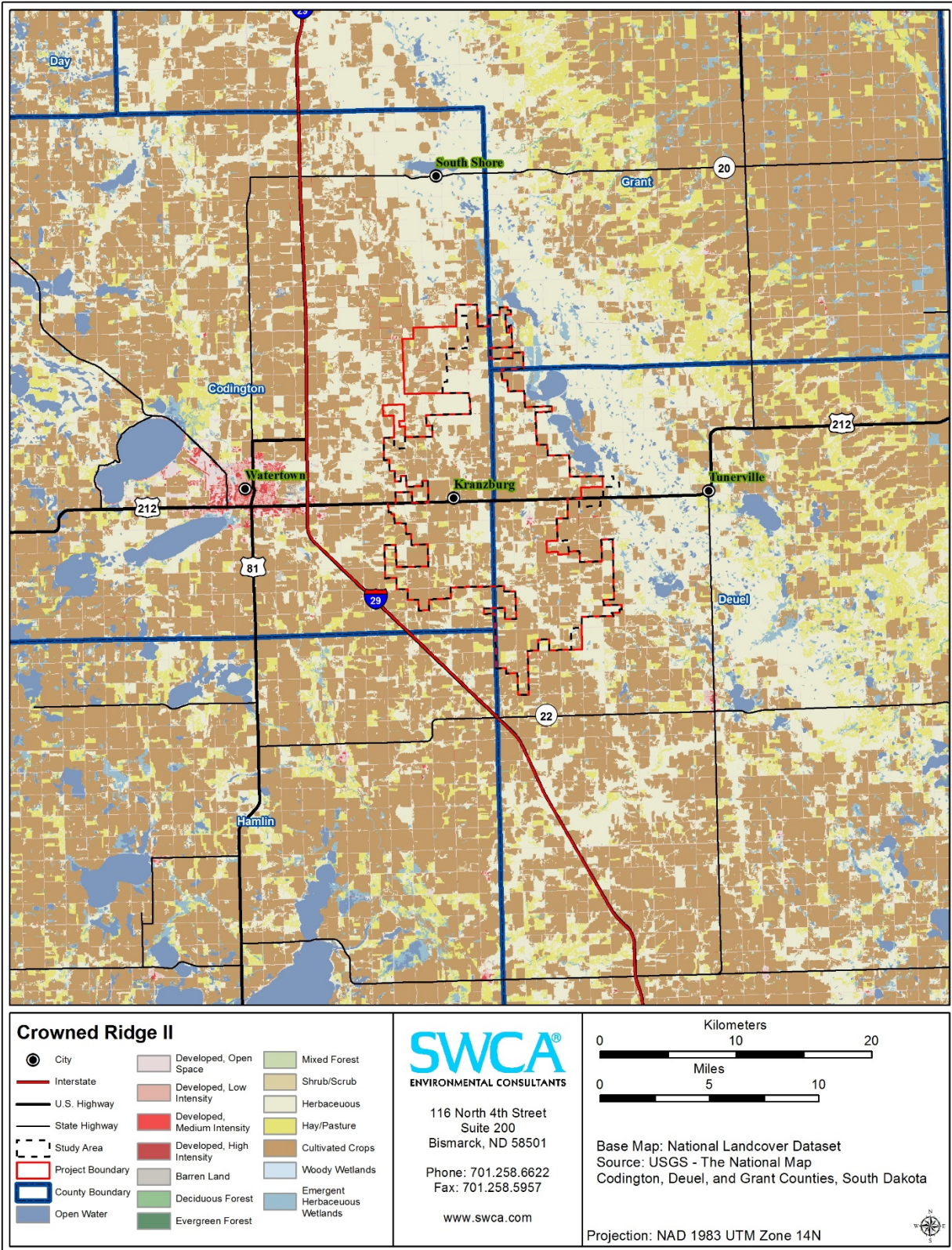


Figure 3. U.S. Geological Survey land cover within the study area.

Bat Habitat Assessment for the Proposed Crowned Ridge Wind II Facility,
 Codington, Deuel, and Grant Counties, South Dakota

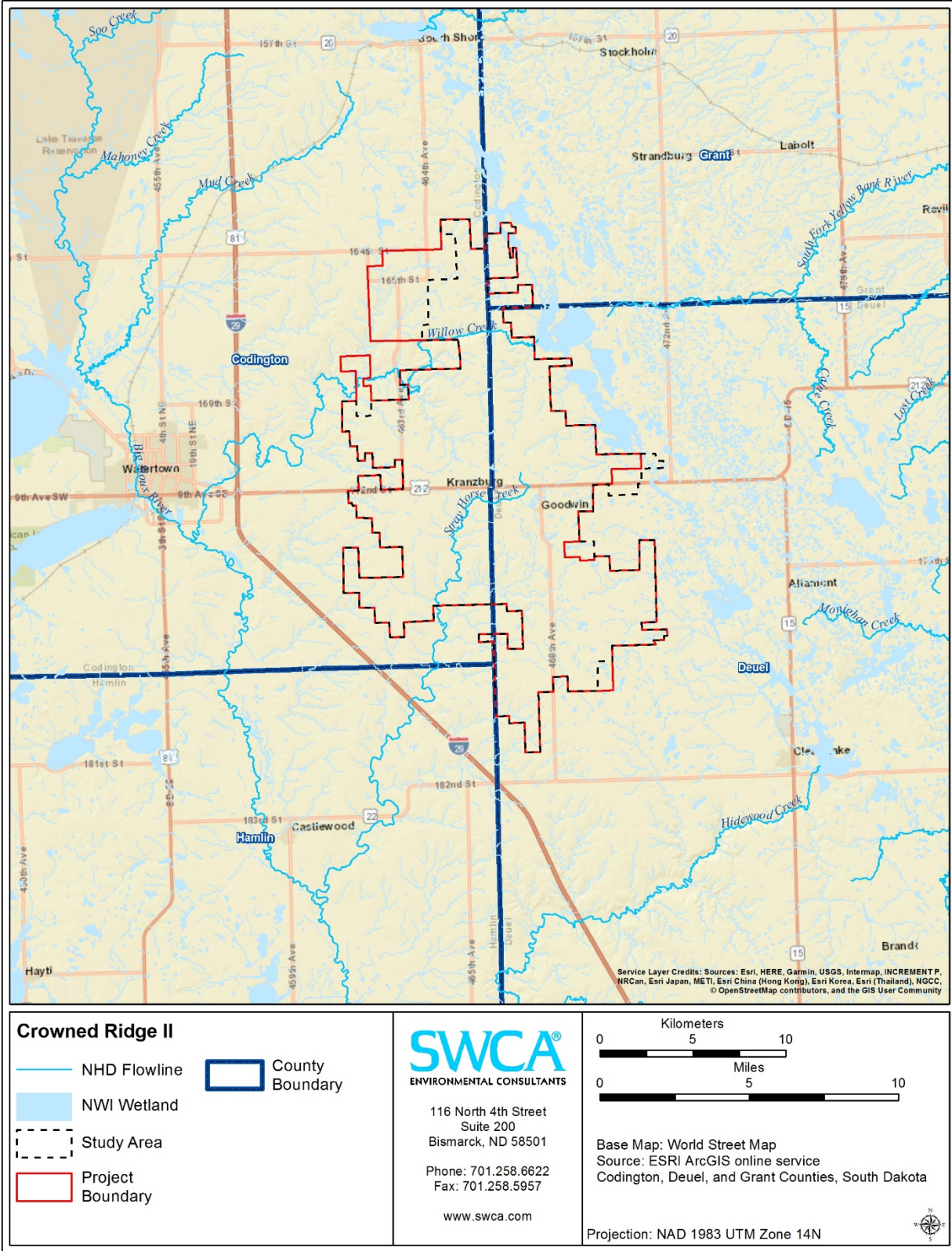


Figure 4. Water resources within the study area.

For the purposes of this assessment, NLCD land cover data were combined with a manual review of aerial photography to identify forested areas misidentified by NLCD. Forest patches smaller than 15 acres are considered unsuitable for northern long-eared bats. Forest patches between 15 and 114 acres are considered suitable and of moderate quality, and forest patches greater than 114 acres are considered suitable and of high quality. Using these criteria, 1,135 acres of forested habitat are unsuitable for use by northern long-eared bats, 123 acres of forested habitat are of moderate quality for northern long-eared bats, and 0 acre of forested habitat is of high quality for northern long-eared bats within the study area (Figure 5).

Three of the six bat species that may be present within the study area hibernate in caves or cave-like structures during the winter. SWCA reviewed cave and karst mapping to determine the likelihood of such features occurring within the study area. A slim band of carbonate runs outside of the study area to the east, with a small portion intersecting with the southeast reaches of the study area (Figure 6). These areas are underlain by minerals that are more prone to cave formation; however, no caves were identified during the desktop analysis.

4 CONCLUSION

For bats with potential to occur within Codington, Deuel, and Grant Counties, SWCA cross-referenced species requirements with availability of suitable habitat for each species, reviewed occurrence records, and coordinated with the USFWS to determine seasonal likelihood of occurrence for each species (Table 3).

The only federally listed species with potential to occur within the study area is the northern long-eared bat. There is limited suitable habitat for the northern long-eared bat within the study area, typically in the form of wooded riparian corridors, small woodlots, and isolated forest patches. The habitat available within the study area is similar in availability and density to the surrounding landscape, indicating that there is no regionally unique habitat that could serve as an attractant for northern long-eared bats to the study area.

The USFWS has stated that there is very low likelihood of northern long-eared bats occurring within the study area as a summer resident. There is potential for the northern long-eared bat to occur within the study area as a migrant during the spring and fall, though migration behavior of the species is poorly understood.

The northern long-eared bat is currently listed as a threatened species; however, due to the 4(d) rule, there is no prohibition on incidental take that results from operation of a wind energy generation facility. There are prohibitions on unpermitted incidental take that result from tree clearing in certain areas at certain times of year. However, because there are no known maternity roost trees or hibernacula within Codington, Deuel, or Grant Counties, those restrictions would not apply to construction of this project.

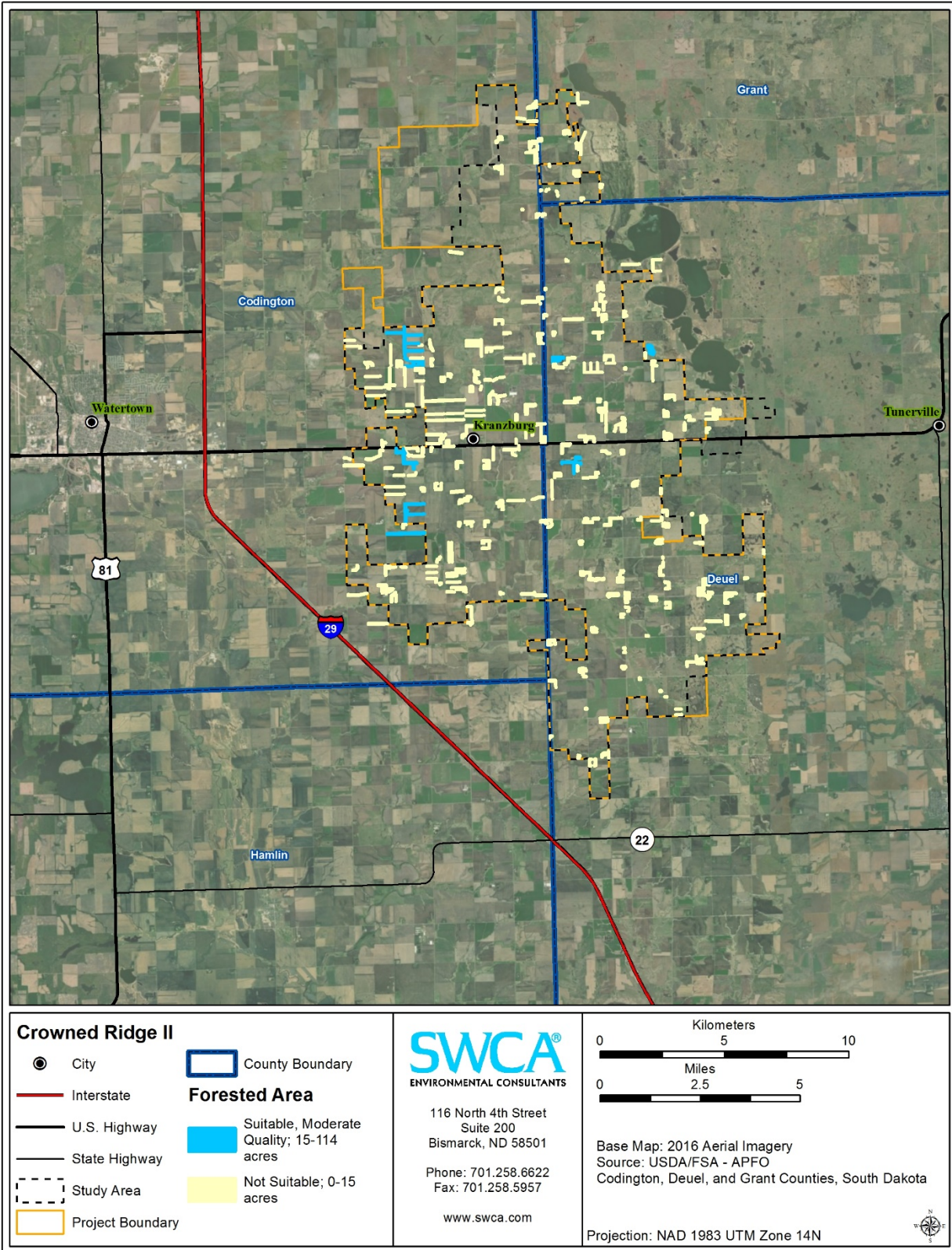


Figure 5. Forest patch size analysis within the study area, indicating areas of suitable northern long-eared bat habitat.

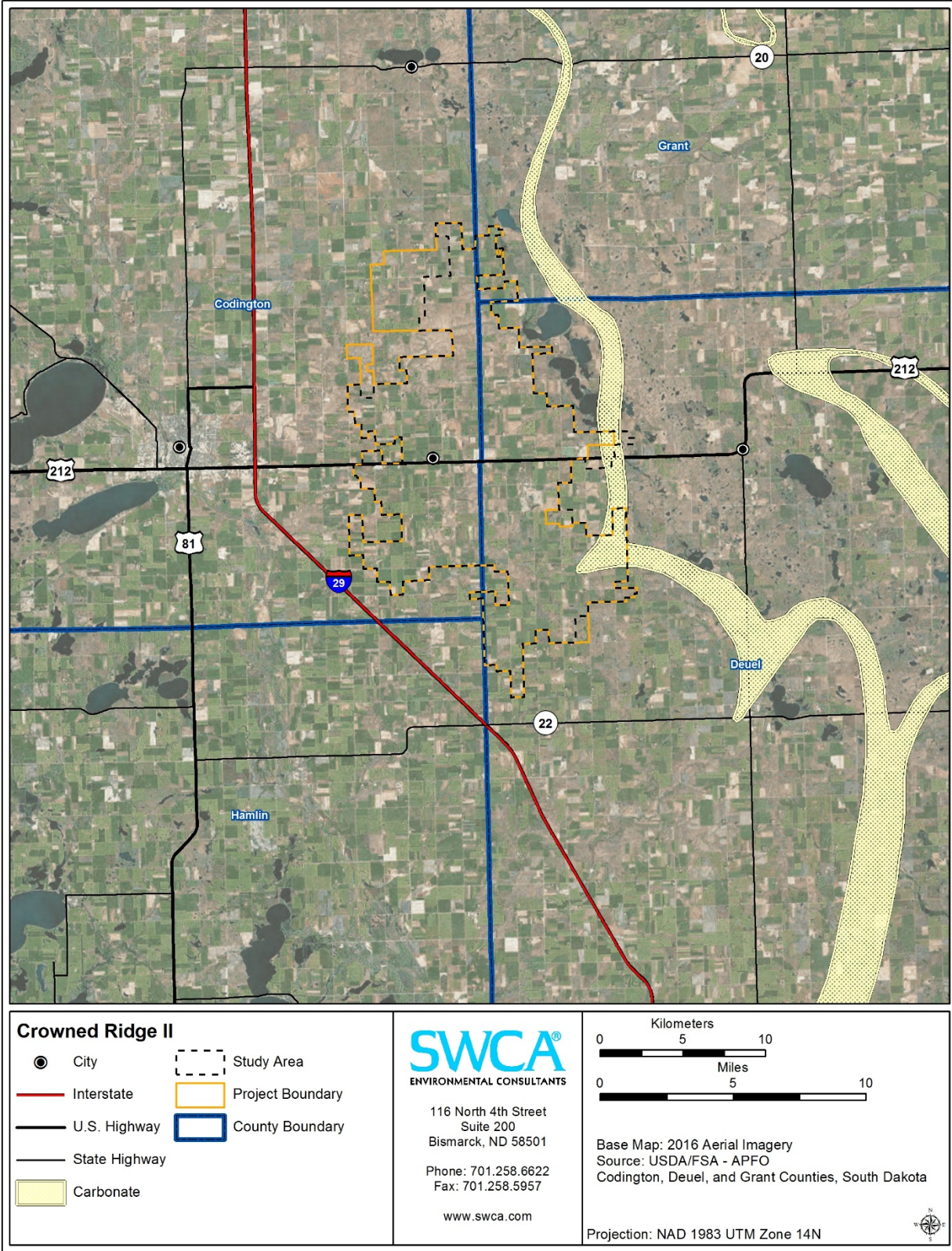


Figure 6. Karst geology within the study area.

Table 3. Habitat Availability and Suitability and Seasonal Likelihood of Occurrence for Bats with Potential to Occur within the Study Area, Codington, Deuel, and Grant Counties, South Dakota

Common Name	Likelihood of Occurrence	Habitat Availability/Suitability in the Study Area	Seasonal Likelihood of Occurrence			
			Spring	Summer	Fall	Winter
Red bat	High	There is limited suitable habitat within the study area. However, red bats are generalists and common throughout their range and may be present as summer residents and as seasonal migrants. Though there is a high likelihood of occurrence, the lack of habitat is likely to limit summer resident population size.	High	High	High	Very low
Silver-haired bat	Medium	Silver-haired bats are distributed sporadically throughout their range. Available data indicate that summer residents in the region are uncommon, though population distribution throughout their range is poorly studied. Summer habitat is limited within the study area. However, the species may migrate through the study area in the spring and fall.	Moderate	Low	Moderate	Very low
Hoary bat	High	There is limited suitable habitat within the study area. However, hoary bats have a large home range and can forage over great distances each night. The species may occur in the study area as summer residents and as seasonal migrants. Though there is a high likelihood of occurrence, the lack of habitat is likely to limit summer resident population size.	High	High	High	Very low
Northern long-eared bat	Low	The study area is within the range of the northern long-eared bat, but publicly available data indicate that the species has not been documented in Codington, Deuel, or Grant Counties. Coordination with the USFWS determined that northern long-eared bats are considered a potential migrant in this region of South Dakota, with very low likelihood of summer residency. Records suggest that the species is limited to the southern reaches of the Missouri River and the Black Hills within South Dakota. Additionally, suitable habitat for northern long-eared bats is extremely limited within the study area. The species may occur in the study area during spring and fall as a migrant, but is very unlikely to be present as a summer resident. There is little potential for suitable winter habitat to occur within the study area. If such habitat is available, individuals typically remain underground for the duration of the season, and therefore do not have potential to occur on the landscape.	Low	Very low	Low	None
Little brown bat	Medium	There is limited natural habitat within the study area, though the species is well adapted to developed areas and human-made structures. However, eastern little brown bat populations have declined precipitously due to white-nose syndrome, limiting the likelihood of presence of this species within the study area.	Low	Low	Low	None
Big brown bat	High	Big-brown bats are common throughout their range. Though there is limited natural habitat available within the study area, their adaptation to live in developed areas and within human-made structures increases their likelihood of presence. This species is likely able to use the barns, houses, and other human-made structures available throughout the study area.	High	High	High	Moderate

5 LITERATURE CITED

- Bryce, S., J.M. Omernik, D.E. Pater, M. Ulmer, J. Schaar, J. Freeouf, R. Johnson, P. Kuck, and S.H. Azevedo. 1998. *Ecoregions of North Dakota and South Dakota*. Jamestown, North Dakota: Northern Prairie Wildlife Research Center.
- Commission for Environmental Cooperation. 1997. Ecological Regions of North America: Toward a Common Perspective. Available at: <http://www3.cec.org/islandora/en/item/1701-ecological-regions-north-america-toward-common-perspective>. Accessed October 2016.
- Fenton, M.B., and R.M.R. Barclay. 1980. *Myotis lucifugus*. *Mammalian Species* 142:1–8.
- Foster, R.W., and A. Kurta. 1999. Roosting ecology of the northern bat (*Myotis septentrionalis*) and comparisons with the endangered Indiana bat (*Myotis sodalis*). *Journal of Mammalogy* 80:659–672.
- Hammerson, G. 2015a. *Eptesicus fuscus*. NatureServe Explorer: An online encyclopedia of life [web application]. Version 7.1. Arlington, Virginia. Available at: <http://explorer.natureserve.org/servlet/NatureServe?searchName=eptesicus%20fuscus>. Accessed April 19, 2017.
- . 2015b. *Lasiurus borealis*. NatureServe Explorer: An online encyclopedia of life [web application]. Version 7.1. Arlington, Virginia. Available at: <http://explorer.natureserve.org/servlet/NatureServe?searchName=lasiurus+borealis>. Accessed April 19, 2017.
- . 2015c. *Lasiurus cinereus*. NatureServe Explorer: An online encyclopedia of life [web application]. Version 7.1. Arlington, Virginia. Available at: <http://explorer.natureserve.org/servlet/NatureServe?searchName=lasiurus+cinereus>. Accessed April 19, 2017.
- . 2015d. *Lasionycteris noctivagans*. NatureServe Explorer: An online encyclopedia of life [web application]. Version 7.1. Arlington, Virginia. Available at: <http://explorer.natureserve.org/servlet/NatureServe?searchName=lasionycteris+noctivagans>. Accessed April 19, 2017.
- Henderson, L.E., and H.G. Broders. 2008. Movements and resource selection of the northern long-eared *Myotis* (*Myotis septentrionalis*) in a forest-agriculture landscape. *Journal of Mammalogy* 89:952–963.
- Higgins, K.F., E. Dowd Stukel, J.M. Goulet, and D.C. Backlund. 2000. *Wild Mammals of South Dakota*. Pierre: South Dakota Department of Game, Fish and Parks.
- Homer, C.G., J.A. Dewitz, L. Yang, S. Jin, P. Danielson, G. Xian, J. Coulston, N.D. Herold, J.D. Wickham, and K. Megown. 2015. Completion of the 2011 National Land Cover Database for the conterminous United States – Representing a decade of land cover change information. *Photogrammetric Engineering and Remote Sensing* 81(5):345–354.
- Jones, J.K., D.M. Armstrong, and J.R. Choate. 1985. *Guide to Mammals of the Plains States*. Lincoln: University of Nebraska Press.
- Jones, J.K., and H.H. Genoways. 1967. Annotated checklist of bats from South Dakota. *Transactions of the Kansas Academy of Sciences* 70:184–196.
- Kunz, T.H. 1982. *Lasionycteris noctivagans*. *Mammalian Species* 172:1–5.

- Mattson, T.A., S.W. Buskirk, and N.L. Stanton. 1996. Roost sites of the silver-haired bat (*Lasionycteris noctivagans*) in the Black Hills, South Dakota. *Great Basin Naturalist* 56:247–253.
- Nowak, R.M., and J.L. Paradiso. 1983. *Walker's Mammals of the World* (4th ed.). Baltimore, Maryland: Johns Hopkins University Press.
- Owen, S., M.A. Menzel, M.W. Ford, B.R. Chapman, K.V. Miller, J. Edwards, and P. Wood. 2003. Home range size and habitat use by northern *Myotis* (*Myotis septentrionalis*). *American Midland Naturalist* 150:352–359.
- Shump, K.A., and A.U. Shump. 1982. *Lasiurus cinereus*. *Mammalian Species* 185:1–5.
- South Dakota Game, Fish and Parks (SDGFP). 2014. *South Dakota Wildlife Action Plan*. Wildlife Division Report 2014-03. Pierre: South Dakota Department of Game, Fish, and Parks.
- . 2017. Threatened and Endangered or Rare Species. Available at: <http://gfp.sd.gov/wildlife/threatened-endangered/default.aspx>. Accessed April 2017.
- Swier, V.J. 2003. Distribution, roost site selection and food habits of bats in eastern South Dakota. M.S. thesis, South Dakota State University.
- Turner, R.W. 1974. *Mammals of the Black Hills of South Dakota and Wyoming*. Lawrence: University of Kansas.
- U.S. Fish and Wildlife Service (USFWS). 2012. National Wetlands Inventory. Washington, D.C.: U.S. Fish and Wildlife Service. Available at: <http://www.fws.gov/wetlands/>. Accessed April 2017.
- . 2016. Endangered and threatened wildlife and plants; threatened species status for the northern long-eared bat with 4(d) rule. *Federal Register* 80:17974–18033.
- . 2017. Endangered Species. U.S. Species. Available at: <https://www.fws.gov/endangered/species/us-species.html>. Accessed April 2017.
- U.S. Geological Survey. 2009. National Hydrography Dataset. Available at: <https://gdg.sc.egov.usda.gov/GDGOrder.aspx>. Accessed April 21, 2017.
- White, J.A., P. Freeman, and C.A. Lemen. 2017. *Habitat Selection by the Northern Long-Eared Myotis (Myotis septentrionalis) in the Midwestern United States: Life in a Shredded Farmscape*. Transactions of the Nebraska Academy of Sciences and Affiliated Societies. 505. Available at: <https://digitalcommons.unl.edu/cgi/viewcontent.cgi?article=1515&context=tnas>. Accessed April 2017.

This page intentionally left blank.