

**Table C-1: Crowned Ridge II 200 MW Sound Level Tabular Results Sorted by Receptor ID**  
**Realistic case sound results at land parcel boundaries and occupied structures**  
**Results using GE 2.3-116-90 m HH, GE 2.1-116-80 m HH WTG's**  
**UTM NAD83 Zone 14**  
**Codington County**

Receptor ID	Participation Status	Type	Easting (m)	Northing (m)	Elevation AMSL (m)	Real Case Sound (dB(A))	7/9/19 Appendix I Report Results	Distance to Nearest Turbine (ft)
CR2-C1-NP	Non-P	Boundary	662,584	4,980,838	590.5	48.7	48.9	791
CR2-C3-NP	Non-P	Boundary	664,052	4,964,700	555.0	33.4	34.9	6,552
CR1-C4-NP	Non-P	Boundary	659,890	4,985,620	605.2	40.1	40.4	3,914
CR1-C7-NP	Non-P	Boundary	661,266	4,985,387	591.0	45.0	46.5	1,253
CR2-C7-NP	Non-P	Boundary	665,612	4,966,608	582.0	37.1	38.5	3,547
CR1-C8-P	Participant	Boundary	661,277	4,984,852	597.0	41.5	43.0	2,139
CR1-C9-NP	Non-P	Boundary	665,266	4,985,122	609.0	44.6	45.5	1,801
CR2-C10-NP	Non-P	Boundary	664,808	4,966,574	561.0	43.4	43.7	1,391
CR1-C10-P	Participant	Boundary	662,977	4,984,084	601.7	50.2	51.8	702
CR1-C11-P	Participant	Boundary	664,225	4,984,910	608.6	50.8	51.1	699
CR1-C12-NP	Non-P	Boundary	662,296	4,986,504	605.2	44.6	44.9	1,444
CR1-C13-NP	Non-P	Boundary	664,419	4,986,258	615.0	49.4	50.1	758
CR1-C15-NP	Non-P	Boundary	662,794	4,986,895	612.9	47.0	47.5	1,017
CR2-C16-NP	Non-P	Boundary	664,794	4,966,949	569.9	49.4	49.4	699
CR1-C16-NP	Non-P	Boundary	661,642	4,985,677	597.0	47.2	48.7	948
CR1-C18-P	Participant	Boundary	664,394	4,987,007	610.2	47.6	49.0	955
CR1-C20-P	Participant	Boundary	663,107	4,987,598	605.1	44.4	44.5	1,834
CR2-C22-NP	Non-P	Boundary	661,457	4,972,769	597.2	34.0	34.5	6,040
CR2-C23-NP	Non-P	Boundary	663,922	4,969,541	594.0	37.9	39.3	3,999
CR2-C24-NP	Non-P	Boundary	662,346	4,969,319	600.0	46.4	46.5	981
CR1-C24-NP	Non-P	Boundary	660,262	4,983,876	599.5	39.2	40.5	2,785
CR2-C26-P	Participant	Boundary	664,502	4,968,179	580.8	50.1	51.6	640
CR2-C27-P	Participant	Boundary	662,571	4,969,314	587.3	50.2	50.3	617
CR1-C28-NP	Non-P	Boundary	665,432	4,989,009	583.9	44.6	40.9	1,483
CR2-C28-P	Participant	Boundary	659,999	4,968,048	567.1	34.8	36.2	4,265
CR2-C29-NP	Non-P	Boundary	662,350	4,969,119	594.7	48.8	48.8	738
CR1-C29-NP	Non-P	Boundary	666,496	4,989,001	574.3	42.4	39.0	1,952
CR2-C30-NP	Non-P	Boundary	659,189	4,967,871	566.6	33.1	34.4	4,938
CR1-C31-NP	Non-P	Boundary	665,639	4,989,013	584.7	44.2	42.8	1,637
CR2-C31-P	Participant	Boundary	662,360	4,973,292	606.0	35.2	35.8	5,407
CR2-C32-P	Participant	Boundary	660,020	4,967,239	573.0	41.7	43.4	1,673
CR2-C33-P	Participant	Boundary	663,452	4,968,137	580.8	47.2	48.8	922
CR2-C35-NP	Non-P	Boundary	659,114	4,975,104	555.7	40.2	40.4	2,208
CR2-C36-NP	Non-P	Boundary	660,716	4,974,757	580.4	42.5	42.6	2,198
CR2-C37-NP	Non-P	Boundary	662,306	4,974,989	606.0	48.8	48.9	751
CR2-C38-NP	Non-P	Boundary	660,926	4,966,838	588.0	43.5	45.3	1,667
CR2-C39-NP	Non-P	Boundary	664,405	4,966,557	563.0	43.6	43.9	1,362
CR2-C40-NP	Non-P	Boundary	659,711	4,975,130	583.9	45.7	45.7	1,178
CR2-C41-P	Participant	Boundary	660,695	4,975,584	598.4	51.4	51.2	617

\* Not included in original submittal

**Table C-1: Crowned Ridge II 200 MW Sound Level Tabular Results Sorted by Receptor ID**  
**Realistic case sound results at land parcel boundaries and occupied structures**  
**Results using GE 2.3-116-90 m HH, GE 2.1-116-80 m HH WTG's**  
**UTM NAD83 Zone 14**  
**Codrington County**  
*continued*

Receptor ID	Participation Status	Type	Easting (m)	Northing (m)	Elevation AMSL (m)	Real Case Sound (dB(A))	7/9/19 Appendix I Report Results	Distance to Nearest Turbine (ft)
CR2-C42-NP	Non-P	Boundary	665,127	4,975,675	595.6	40.2	41.8	2,474
CR2-C43-NP	Non-P	Boundary	663,896	4,976,057	596.6	40.9	42.5	2,037
CR2-C44-NP	Non-P	Boundary	659,186	4,966,434	555.0	35.3	37.0	3,527
CR2-C45-P	Participant	Boundary	664,019	4,965,873	570.0	37.0	38.3	3,934
CR2-C46-NP	Non-P	Boundary	660,215	4,966,435	582.0	45.6	47.3	1,083
CR2-C47-NP	Non-P	Boundary	662,128	4,975,739	594.0	40.9	41.1	2,477
CR2-C48-NP	Non-P	Boundary	662,312	4,965,660	590.1	43.4	45.3	2,067
CR2-C49-NP	Non-P	Boundary	661,080	4,965,005	582.0	40.3	42.2	2,575
CR2-C50-P	Participant	Boundary	660,674	4,976,401	574.5	49.7	49.6	705
CR2-C51-NP	Non-P	Boundary	662,731	4,964,867	584.2	37.9	39.7	3,091
CR2-C52-NP	Non-P	Boundary	662,432	4,964,852	574.4	40.0	41.8	2,218
CR2-C53-NP	Non-P	Boundary	661,853	4,964,839	578.5	45.3	47.0	1,138
CR2-C54-NP	Non-P	Boundary	662,719	4,976,216	597.0	41.4	42.8	1,939
CR2-C55-NP	Non-P	Boundary	660,848	4,964,816	582.0	37.8	39.6	3,438
CR2-C57-P	Participant	Boundary	666,460	4,976,511	615.0	46.1	46.6	1,119
CR2-C59-P	Participant	Boundary	664,882	4,976,884	603.0	46.4	48.1	1,024
CR2-C60-P	Participant	Boundary	663,492	4,976,270	596.4	50.4	52.0	604
CR2-C61-NP	Non-P	Boundary	660,672	4,976,784	582.9	44.7	45.2	1,440
CR2-C62-NP	Non-P	Boundary	666,705	4,976,925	612.0	48.1	48.4	837
CR2-C63-P	Participant	Boundary	666,292	4,977,116	610.5	46.6	47.1	1,027
CR2-C64-NP	Non-P	Boundary	661,628	4,964,834	577.9	43.9	45.6	1,355
CR2-C65-NP	Non-P	Boundary	665,066	4,978,501	606.1	43.3	47.5	1,985
CR2-C66-NP	Non-P	Boundary	661,881	4,964,060	572.8	35.5	37.2	3,694
CR2-C67-NP	Non-P	Boundary	660,639	4,978,403	556.5	36.9	38.0	4,071
CR2-C68-NP	Non-P	Boundary	662,455	4,963,673	580.3	32.9	34.5	5,354
CR1-C68-P	Participant	Boundary	662,024	4,987,612	604.9	51.0	51.0	640
CR2-C69-NP	Non-P	Boundary	661,200	4,977,610	571.8	46.2	47.7	1,027
CR1-C70-NP	Non-P	Boundary	664,950	4,988,325	596.1	41.4	41.9	2,940
CR2-C70-P	Participant	Boundary	665,711	4,970,192	583.7	43.9	45.9	1,398
CR1-C71-NP	Non-P	Boundary	664,414	4,988,688	600.0	47.8	48.1	909
CR2-C71-NP	Non-P	Boundary	665,511	4,970,237	582.0	41.1	43.1	2,047
CR2-C72-NP	Non-P	Boundary	663,882	4,970,343	599.2	35.5	36.7	5,860
CR1-C73-NP	Non-P	Boundary	663,740	4,982,989	591.6	46.0	47.7	1,175
CR2-C74-NP	Non-P	Boundary	660,737	4,969,659	585.4	32.9	33.6	6,279
CR2-C75-NP	Non-P	Boundary	665,533	4,969,027	576.4	43.1	44.8	2,051
CR2-C77-NP	Non-P	Boundary	663,124	4,969,545	597.9	39.9	40.6	2,264
CR1-C77-P	Participant	Boundary	660,965	4,983,217	584.0	51.1	52.6	558
CR2-C78-P	Participant	Boundary	665,321	4,983,408	608.5	50.7	52.3	705

\* Not included in original submittal

**Table C-1: Crowned Ridge II 200 MW Sound Level Tabular Results Sorted by Receptor ID**  
**Realistic case sound results at land parcel boundaries and occupied structures**  
**Results using GE 2.3-116-90 m HH, GE 2.1-116-80 m HH WTG's**  
**UTM NAD83 Zone 14**  
**Codington County**  
**continued**

Receptor ID	Participation Status	Type	Easting (m)	Northing (m)	Elevation AMSL (m)	Real Case Sound (dB(A))	7/9/19 Appendix I Report Results	Distance to Nearest Turbine (ft)
CR2-C78-P	Participant	Boundary	660,509	4,983,361	601.0	43.4	52.3	705
CR2-C79-NP	Non-P	Boundary	666,645	4,984,162	594.4	46.2	47.8	1,119
CR1-C79-NP	Non-P	Boundary	660,498	4,983,685	595.6	41.9	43.4	1,791
CR1-C80-NP	Non-P	Boundary	659,693	4,983,990	603.4	37.2	38.1	4,590
CR2-C80-NP	Non-P	Boundary	665,496	4,971,451	597.0	36.1	37.9	4,501
CR1-C81-NP	Non-P	Boundary	660,516	4,983,200	595.7	42.9	44.5	1,565
CR1-C84-NP	Non-P	Boundary	659,796	4,982,364	594.1	36.6	37.7	5,072
CR1-C85-NP	Non-P	Boundary	659,751	4,981,560	587.4	36.2	37.3	4,734
CR1-C86-P	Participant	Boundary	661,252	4,981,612	589.8	47.9	49.6	1,070
CR1-C87-NP	Non-P	Boundary	662,846	4,982,473	585.1	40.6	42.0	4,193
CR2-C87-NP	Non-P	Boundary	662,990	4,971,076	603.0	33.8	34.6	6,542
CR1-C88-NP	Non-P	Boundary	660,240	4,980,801	571.0	37.3	38.6	3,458
CR2-C89-NP	Non-P	Boundary	662,304	4,970,980	603.0	33.5	34.2	6,145
CR2-C91-NP	Non-P	Boundary	664,274	4,970,519	594.0	35.5	36.9	6,174
CR2-C92-NP	Non-P	Boundary	663,878	4,970,491	597.0	35.2	36.4	6,191
CR2-C93-NP	Non-P	Boundary	659,946	4,973,545	578.6	34.8	35.1	5,827
CR2-C95-NP	Non-P	Boundary	659,720	4,974,150	561.0	36.7	36.8	4,390
CR2-C97-NP	Non-P	Boundary	660,676	4,976,379	589.3	49.7	49.7	702
CR2-C99-P	Participant	Boundary	660,483	4,972,731	585.6	33.3	33.7	6,811
CR2-C100-NP	Non-P	Boundary	660,637	4,972,733	591.0	33.4	33.9	6,604
CR2-C101-NP	Non-P	Boundary	660,765	4,972,985	588.8	34.2	34.7	5,682
CR2-C102-NP	Non-P	Boundary	661,983	4,976,005	591.0	40.3	40.4	3,360
CR2-C104-NP	Non-P	Boundary	661,882	4,972,775	603.0	34.1	34.6	6,243
CR2-C107-NP	Non-P	Boundary	662,229	4,977,633	564.3	38.0	39.1	3,547
CR2-C109-NP	Non-P	Boundary	662,644	4,972,909	606.0	34.2	34.7	6,968
CR2-C112-NP	Non-P	Boundary	666,270	4,972,900	602.5	36.8	38.1	5,253
CR2-C115-NP	Non-P	Boundary	662,993	4,980,847	561.8	45.4	46.7	1,473
CR2-C116-NP	Non-P	Boundary	664,686	4,976,878	598.0	45.1	46.8	1,201
CR2-C118-NP	Non-P	Boundary	665,548	4,975,288	600.2	41.2	42.8	2,224
CR2-C123-P	Participant	Boundary	665,581	4,967,412	573.5	39.0	40.5	3,579
CR2-C128-P	Participant	Boundary	667,185	4,968,243	579.7	46.8	48.2	1,079
CR2-C134-NP	Non-P	Boundary	667,174	4,973,721	610.9	44.9	46.3	1,496
CR2-C135-NP	Non-P	Boundary	667,221	4,966,634	591.0	41.0	43.3	1,854
CR2-C137-NP	Non-P	Boundary	659,035	4,979,157	564.0	34.1	34.8	6,398
CR2-C142-NP	Non-P	Boundary	657,486	4,977,150	549.0	33.4	34.1	5,846
CR2-C143-NP	Non-P	Boundary	657,478	4,977,453	561.6	33.2	34.0	5,919
CR2-C151-NP	Non-P	Boundary	663,729	4,964,513	554.3	33.5	35.0	6,486
CR2-C154-P	Participant	Boundary	660,033	4,966,759	577.9	50.5	52.1	577

\* Not included in original submittal

**Table C-1: Crowned Ridge II 200 MW Sound Level Tabular Results Sorted by Receptor ID**  
**Realistic case sound results at land parcel boundaries and occupied structures**  
**Results using GE 2.3-116-90 m HH, GE 2.1-116-80 m HH WTG's**  
**UTM NAD83 Zone 14**  
**Codington County**  
**continued**

Receptor ID	Participation Status	Type	Easting (m)	Northing (m)	Elevation AMSL (m)	Real Case Sound (dB(A))	7/9/19 Appendix I Report Results	Distance to Nearest Turbine (ft)
CR2-C1-NP	Non-P	Structure	662,198	4,980,622	591.0	42.0	42.7	1,909
CR2-C2-NP	Non-P	Structure	662,238	4,980,604	590.9	42.1	42.8	1,880
CR2-C3-NP	Non-P	Structure	664,345	4,964,571	556.0	32.7	34.2	7,497
CR1-C4-NP	Non-P	Structure	659,744	4,984,749	606.0	37.8	38.3	5,981
CR1-C5-NP	Non-P	Structure	659,958	4,984,794	604.8	38.1	38.7	5,659
CR1-C7-NP	Non-P	Structure	660,893	4,984,861	593.2	39.9	41.1	3,022
CR2-C7-NP	Non-P	Structure	665,694	4,966,179	570.0	35.6	37.1	4,409
CR1-C8-P	Participant	Structure	660,532	4,984,445	599.4	38.9	39.9	3,740
CR1-C9-NP	Non-P	Structure	665,352	4,985,004	609.0	43.7	44.9	2,280
CR2-C10-NP	Non-P	Structure	665,189	4,966,505	570.0	38.9	39.7	2,438
CR1-C10-P	Participant	Structure	663,510	4,985,195	609.0	43.2	45.8	2,346
CR1-C11-P	Participant	Structure	664,111	4,985,679	609.0	44.5	45.2	1,860
CR1-C12-NP	Non-P	Structure	662,222	4,985,736	603.0	42.0	43.7	2,201
CR1-C12-1-NP	Non-P	Structure	662,199	4,986,047	606.0	41.8	43.0	2,818
CR1-C13-NP	Non-P	Structure	663,792	4,985,785	612.0	42.6	43.9	2,589
CR1-C15-NP	Non-P	Structure	663,291	4,986,026	615.0	41.0	43.2	3,907
CR1-C16-NP	Non-P	Structure	661,960	4,986,288	606.0	42.2	42.9	2,648
CR2-C16-NP	Non-P	Structure	665,418	4,966,866	567.0	38.7	39.6	2,756
CR1-C18-P	Participant	Structure	663,651	4,987,157	610.4	41.9	42.6	3,409
CR1-C20-P	Participant	Structure	663,054	4,987,455	606.0	43.7	43.9	2,336
CR1-C21-P	Participant	Structure	660,756	4,984,086	594.0	40.5	41.9	2,388
CR2-C22-NP	Non-P	Structure	661,202	4,972,711	597.0	33.8	34.3	6,247
CR1-C22-P	Participant	Structure	660,755	4,984,082	594.0	40.5	41.9	2,375
CR2-C23-NP	Non-P	Structure	664,069	4,969,661	594.0	37.4	38.8	4,439
CR1-C23-P	Participant	Structure	660,619	4,984,078	595.8	40.1	41.4	2,523
CR1-C24-NP	Non-P	Structure	660,176	4,983,887	601.1	38.7	39.9	3,038
CR2-C24-NP	Non-P	Structure	661,541	4,969,653	600.0	35.4	36.0	3,809
CR1-C25-P	Participant	Structure	660,190	4,983,788	602.3	39.0	40.3	2,838
CR2-C26-P	Participant	Structure	664,733	4,968,915	591.0	41.7	43.4	1,959
CR2-C27-P	Participant	Structure	662,985	4,968,167	582.0	42.3	43.8	1,726
CR1-C28-NP	Non-P	Structure	665,429	4,988,598	590.9	41.3	40.1	2,831
CR2-C28-P	Participant	Structure	659,208	4,968,159	572.8	32.4	33.7	5,630
CR1-C29-NP	Non-P	Structure	666,572	4,988,867	575.9	41.0	38.6	2,457
CR2-C29-NP	Non-P	Structure	661,223	4,968,144	595.2	36.2	37.6	4,639
CR2-C30-NP	Non-P	Structure	659,100	4,968,023	568.6	32.5	33.7	5,502
CR1-C31-NP	Non-P	Structure	665,939	4,988,950	585.4	43.1	39.6	2,126
CR2-C31-P	Participant	Structure	663,117	4,972,923	606.0	34.1	34.7	7,579
CR2-C32-P	Participant	Structure	659,469	4,967,984	575.2	33.6	35.0	4,678

\* Not included in original submittal

**Table C-1: Crowned Ridge II 200 MW Sound Level Tabular Results Sorted by Receptor ID**  
**Realistic case sound results at land parcel boundaries and occupied structures**  
**Results using GE 2.3-116-90 m HH, GE 2.1-116-80 m HH WTG's**  
**UTM NAD83 Zone 14**  
**Codington County**  
**continued**

Receptor ID	Participation Status	Type	Easting (m)	Northing (m)	Elevation AMSL (m)	Real Case Sound (dB(A))	7/9/19 Appendix I Report Results	Distance to Nearest Turbine (ft)
CR2-C33-P	Participant	Structure	663,878	4,967,612	576.1	40.4	41.8	2,999
CR2-C34-P	Participant	Structure	663,934	4,966,991	570.1	40.7	41.5	2,133
CR2-C35-NP	Non-P	Structure	658,964	4,974,334	566.8	35.5	35.6	4,432
CR2-C36-NP	Non-P	Structure	660,475	4,974,426	578.6	39.8	40.1	2,992
CR2-C37-NP	Non-P	Structure	663,037	4,974,496	606.0	37.5	38.0	3,537
CR2-C38-NP	Non-P	Structure	660,874	4,966,929	585.5	42.8	44.6	1,906
CR2-C39-NP	Non-P	Structure	664,089	4,966,486	566.2	40.2	40.9	2,178
CR2-C40-NP	Non-P	Structure	659,189	4,974,765	578.3	38.5	38.6	2,841
CR2-C41-P	Participant	Structure	660,770	4,975,147	596.4	45.4	43.6	1,532
CR2-C42-NP	Non-P	Structure	664,887	4,975,388	597.0	38.4	39.7	3,566
CR2-C43-NP	Non-P	Structure	664,382	4,975,544	597.0	37.8	39.1	4,232
CR2-C44-NP	Non-P	Structure	659,145	4,966,062	561.4	34.2	35.8	4,183
CR2-C45-P	Participant	Structure	664,058	4,965,862	570.0	36.9	38.2	3,907
CR2-C46-NP	Non-P	Structure	660,435	4,965,627	582.0	39.5	41.3	2,569
CR2-C47-NP	Non-P	Structure	662,200	4,975,837	594.5	40.3	40.7	2,821
CR2-C48-NP	Non-P	Structure	662,370	4,965,588	590.3	42.8	44.7	2,172
CR2-C49-NP	Non-P	Structure	660,907	4,964,846	582.0	38.3	40.1	3,271
CR2-C50-P	Participant	Structure	661,252	4,976,035	597.0	44.7	43.5	1,696
CR2-C51-NP	Non-P	Structure	662,977	4,964,794	584.0	36.4	38.2	3,934
CR2-C52-NP	Non-P	Structure	662,688	4,964,792	585.9	37.8	39.6	3,054
CR2-C53-NP	Non-P	Structure	662,401	4,964,782	582.0	39.7	41.5	2,257
CR2-C54-NP	Non-P	Structure	662,636	4,976,079	597.0	40.6	41.8	2,287
CR2-C55-NP	Non-P	Structure	660,765	4,964,777	582.0	37.1	38.9	3,655
CR2-C56-NP	Non-P	Structure	660,759	4,964,737	582.0	36.9	38.7	3,786
CR2-C57-P	Participant	Structure	666,667	4,976,162	613.8	42.4	43.6	2,362
CR2-C58-NP	Non-P	Structure	660,764	4,964,686	582.0	36.7	38.4	3,904
CR2-C59-P	Participant	Structure	664,952	4,976,698	601.9	42.9	44.6	1,654
CR2-C60-P	Participant	Structure	662,287	4,976,800	594.0	38.9	39.9	3,793
CR2-C61-NP	Non-P	Structure	660,630	4,976,840	582.5	43.9	44.5	1,667
CR2-C62-NP	Non-P	Structure	666,992	4,977,048	615.0	42.9	43.9	1,860
CR2-C63-P	Participant	Structure	665,528	4,977,285	612.0	42.0	43.9	2,185
CR2-C64-NP	Non-P	Structure	660,901	4,964,220	582.0	34.8	36.4	4,429
CR2-C65-NP	Non-P	Structure	665,217	4,977,746	609.0	42.0	44.3	2,139
CR1-C66-NP	Non-P	Structure	659,718	4,985,032	606.0	38.3	38.7	5,800
CR2-C66-NP	Non-P	Structure	662,396	4,963,954	582.0	34.3	35.9	4,429
CR1-C67-NP	Non-P	Structure	659,789	4,985,057	606.0	38.4	38.8	5,791
CR2-C67-NP	Non-P	Structure	660,379	4,978,592	556.1	36.2	37.1	5,033
CR2-C68-NP	Non-P	Structure	662,517	4,963,408	579.0	31.9	33.4	6,237

\* Not included in original submittal

**Table C-1: Crowned Ridge II 200 MW Sound Level Tabular Results Sorted by Receptor ID**  
**Realistic case sound results at land parcel boundaries and occupied structures**  
**Results using GE 2.3-116-90 m HH, GE 2.1-116-80 m HH WTG's**  
**UTM NAD83 Zone 14**  
**Codington County**  
**continued**

Receptor ID	Participation Status	Type	Easting (m)	Northing (m)	Elevation AMSL (m)	Real Case Sound (dB(A))	7/9/19 Appendix I Report Results	Distance to Nearest Turbine (ft)
CR1-C68-P	Participant	Structure	662,652	4,987,606	609.0	45.1	45.2	2,146
CR2-C69-NP	Non-P	Structure	661,701	4,978,792	564.0	36.4	37.3	5,171
CR1-C69-P	Participant	Structure	662,685	4,987,619	609.0	45.0	45.1	2,185
CR1-C70-NP	Non-P	Structure	665,135	4,988,293	595.9	40.9	40.9	3,540
CR2-C70-P	Participant	Structure	665,521	4,970,518	588.9	40.2	42.3	2,215
CR1-C71-NP	Non-P	Structure	665,137	4,988,378	595.6	41.1	40.9	3,448
CR2-C71-NP	Non-P	Structure	665,411	4,970,503	586.1	39.4	41.4	2,529
CR1-C72-NP	Non-P	Structure	665,158	4,988,170	594.6	40.7	41.1	3,776
CR2-C72-NP	Non-P	Structure	663,856	4,970,488	597.0	35.2	36.3	6,135
CR1-C73-NP	Non-P	Structure	663,066	4,982,530	591.0	40.8	42.3	3,704
CR1-C74-NP	Non-P	Structure	662,869	4,983,122	595.7	42.6	44.2	2,480
CR2-C74-NP	Non-P	Structure	660,687	4,969,931	586.5	32.5	33.2	6,732
CR1-C75-NP	Non-P	Structure	663,010	4,982,658	588.0	40.9	42.4	3,730
CR2-C75-NP	Non-P	Structure	664,866	4,969,808	583.7	38.0	39.7	4,396
CR1-C76-NP	Non-P	Structure	662,981	4,982,580	588.3	40.8	42.3	3,901
CR2-C76-NP	Non-P	Structure	664,747	4,969,738	584.8	37.9	39.5	4,560
CR2-C77-NP	Non-P	Structure	663,865	4,969,694	597.0	37.3	38.6	4,406
CR1-C77-P	Participant	Structure	661,915	4,983,367	591.0	43.6	45.2	1,654
CR2-C78-P	Participant	Structure	665,273	4,983,933	609.0	45.3	46.9	1,919
CR1-C78-P	Participant	Structure	660,190	4,983,788	602.3	39.0	40.3	2,835
CR2-C79-NP	Non-P	Structure	666,869	4,984,663	587.9	41.3	43.0	2,703
CR1-C79-NP	Non-P	Structure	660,452	4,983,750	595.9	41.0	42.5	2,037
CR1-C80-NP	Non-P	Structure	659,351	4,983,174	604.4	36.0	36.8	5,308
CR2-C80-NP	Non-P	Structure	664,705	4,972,092	597.3	34.4	35.6	7,684
CR1-C81-NP	Non-P	Structure	660,062	4,983,083	597.0	38.4	39.7	3,094
CR1-C84-NP	Non-P	Structure	659,607	4,982,216	594.0	36.0	37.0	5,856
CR1-C85-NP	Non-P	Structure	659,706	4,981,419	588.0	36.0	37.0	4,819
CR2-C86-NP	Non-P	Structure	662,880	4,971,302	603.0	33.5	34.3	7,208
CR1-C86-P	Participant	Structure	662,086	4,982,135	585.0	41.7	43.2	2,306
CR1-C87-NP	Non-P	Structure	662,628	4,982,425	585.4	40.5	41.9	4,258
CR2-C87-NP	Non-P	Structure	662,841	4,971,294	603.0	33.5	34.3	7,165
CR1-C88-NP	Non-P	Structure	660,156	4,980,595	570.9	36.5	37.6	4,045
CR2-C89-NP	Non-P	Structure	662,244	4,971,076	603.0	33.4	34.0	6,489
CR1-C89-P	Participant	Structure	662,062	4,982,029	584.3	42.0	43.5	2,165
CR2-C90-NP	Non-P	Structure	664,088	4,970,672	594.0	35.0	36.3	6,863
CR2-C91-NP	Non-P	Structure	663,938	4,970,546	597.0	35.1	36.3	6,457
CR2-C92-NP	Non-P	Structure	663,855	4,970,535	597.0	35.1	36.3	6,247
CR2-C93-NP	Non-P	Structure	659,203	4,973,158	584.9	32.7	32.9	7,792

\* Not included in original submittal

**Table C-1: Crowned Ridge II 200 MW Sound Level Tabular Results Sorted by Receptor ID**  
**Realistic case sound results at land parcel boundaries and occupied structures**  
**Results using GE 2.3-116-90 m HH, GE 2.1-116-80 m HH WTG's**  
**UTM NAD83 Zone 14**  
**Codington County**  
**continued**

Receptor ID	Participation Status	Type	Easting (m)	Northing (m)	Elevation AMSL (m)	Real Case Sound (dB(A))	7/9/19 Appendix I Report Results	Distance to Nearest Turbine (ft)
CR2-C94-NP	Non-P	Structure	659,202	4,973,052	583.9	32.5	32.7	8,133
CR2-C95-NP	Non-P	Structure	659,248	4,974,054	567.0	35.2	35.3	4,898
CR2-C96-NP	Non-P	Structure	659,316	4,974,063	570.6	35.4	35.5	4,813
CR2-C97-NP	Non-P	Structure	660,093	4,976,001	583.8	44.8	44.8	1,814
CR2-C98-NP	Non-P	Structure	660,155	4,976,007	582.8	44.9	44.8	1,749
CR2-C99-P	Participant	Structure	660,584	4,972,570	591.0	33.1	33.5	7,165
CR2-C100-NP	Non-P	Structure	660,592	4,972,602	591.0	33.1	33.5	7,057
CR2-C101-NP	Non-P	Structure	660,732	4,972,807	591.0	33.7	34.1	6,266
CR2-C102-NP	Non-P	Structure	662,025	4,976,085	594.1	40.0	40.3	3,609
CR2-C103-NP	Non-P	Structure	662,046	4,976,067	594.8	40.0	40.3	3,547
CR2-C104-NP	Non-P	Structure	662,109	4,972,735	604.0	34.0	34.5	6,608
CR2-C105-NP	Non-P	Structure	662,122	4,976,029	595.3	39.9	40.3	3,425
CR2-C106-NP	Non-P	Structure	662,165	4,972,711	604.7	33.9	34.5	6,749
CR2-C107-NP	Non-P	Structure	662,265	4,978,194	577.7	37.0	38.0	4,564
CR2-C109-NP	Non-P	Structure	662,699	4,972,874	606.0	34.1	34.7	7,169
CR2-C112-NP	Non-P	Structure	665,928	4,972,630	603.0	35.8	37.1	6,575
CR2-C115-NP	Non-P	Structure	663,555	4,980,564	575.2	40.7	42.1	2,520
CR2-C116-NP	Non-P	Structure	664,640	4,976,142	591.1	39.2	40.7	3,533
CR2-C117-NP	Non-P	Structure	664,742	4,976,142	594.2	39.4	40.9	3,481
CR2-C118-NP	Non-P	Structure	665,014	4,974,639	600.0	37.1	38.2	4,947
CR2-C119-NP	Non-P	Structure	665,052	4,974,682	600.0	37.2	38.4	4,760
CR2-C123-P	Participant	Structure	666,146	4,966,653	579.4	36.4	38.2	5,216
CR2-C126-P	Participant	Structure	666,389	4,966,670	585.0	36.6	38.6	4,455
CR2-C128-P	Participant	Structure	666,636	4,966,649	589.0	37.0	39.3	3,671
CR2-C129-P	Participant	Structure	666,716	4,966,751	591.0	37.6	39.8	3,356
CR2-C130-P	Participant	Structure	666,727	4,966,695	591.0	37.5	39.8	3,350
CR2-C131-NP	Non-P	Structure	666,732	4,984,987	591.0	41.4	43.0	2,287
CR2-C132-NP	Non-P	Structure	666,857	4,985,021	588.2	42.2	43.8	1,883
CR2-C133-P	Participant	Structure	666,992	4,967,681	571.2	40.7	43.0	3,002
CR2-C134-NP	Non-P	Structure	667,097	4,973,011	613.0	39.3	40.8	3,363
CR2-C135-NP	Non-P	Structure	667,172	4,966,196	595.2	37.4	40.0	2,884
CR2-C136-NP	Non-P	Structure	667,209	4,966,166	595.4	37.3	40.0	2,887
CR2-C137-NP	Non-P	Structure	658,951	4,979,194	568.2	33.9	34.6	6,555
CR2-C142-NP	Non-P	Structure	656,697	4,977,269	566.9	31.4	31.8	8,432
CR2-C143-NP	Non-P	Structure	657,016	4,977,505	553.6	32.0	32.5	7,444
CR2-C151-NP	Non-P	Structure	663,934	4,964,475	556.1	33.0	34.6	6,929
CR2-C154-P	Participant	Structure	660,684	4,967,166	588.0	41.5	43.3	2,041
CR2-C155-NP	Non-P	Structure	657,554	4,975,128	554.6	32.6	*	7,034

\* Not included in original submittal

**Table C-1: Crowned Ridge II 200 MW Sound Level Tabular Results Sorted by Receptor ID**  
**Realistic case sound results at land parcel boundaries and occupied structures**  
**Results using GE 2.3-116-90 m HH, GE 2.1-116-80 m HH WTG's**  
**UTM NAD83 Zone 14**  
**Deuel County**  
**continued**

Receptor ID	Participation Status	Type	Easting (m)	Northing (m)	Elevation AMSL (m)	Real Case Sound (dB(A))	7/9/19 Appendix I Report Results	Distance to Nearest Turbine (ft)
CR2-D3-NP	Non-P	Structure	672,390	4,963,482	612.0	27.5	44.7	18,746
CR2-D5-NP	Non-P	Structure	668,781	4,964,897	603.0	31.2	39.7	7,342
CR2-D6-P	Participant	Structure	668,762	4,967,671	591.0	39.2	43.1	2,844
CR2-D9-NP	Non-P	Structure	668,597	4,971,999	611.5	36.8	38.6	4,921
CR2-D11-NP	Non-P	Structure	669,646	4,974,534	604.4	42.4	40.8	1,919
CR2-D12-NP	Non-P	Structure	668,558	4,969,840	604.7	41.8	44.0	2,051
CR2-D14-NP	Non-P	Structure	670,351	4,973,543	606.0	42.5	43.1	2,041
CR2-D15-NP	Non-P	Structure	674,387	4,968,515	588.0	29.8	43.3	12,474
CR2-D16-P	Participant	Structure	671,626	4,966,693	601.7	31.2	44.1	8,005
CR2-D17-NP	Non-P	Structure	672,023	4,969,597	597.0	33.5	41.4	5,167
CR2-D18-NP	Non-P	Structure	671,540	4,976,154	582.0	41.6	43.2	2,201
CR2-D19-NP	Non-P	Structure	668,870	4,964,178	606.0	29.9	42.2	9,600
CR2-D20-NP	Non-P	Structure	675,261	4,968,400	579.0	29.4	44.0	15,364
CR2-D21-NP	Non-P	Structure	669,517	4,978,053	596.1	43.7	44.7	1,985
CR2-D22-NP	Non-P	Structure	668,798	4,963,767	603.1	29.3	41.5	10,777
CR2-D23-NP	Non-P	Structure	669,671	4,980,468	573.0	37.1	38.4	4,380
CR2-D30-NP	Non-P	Structure	669,549	4,974,233	611.9	42.0	40.8	2,044
CR2-D36-NP	Non-P	Structure	669,812	4,966,746	591.0	33.8	41.9	6,837
CR2-D37-NP	Non-P	Structure	674,048	4,974,071	573.0	33.1	34.8	6,542
CR2-D38-P	Participant	Structure	667,108	4,982,083	597.0	44.0	46.8	1,693
CR2-D39-P	Participant	Structure	668,443	4,974,627	614.4	44.0	45.6	1,706
CR2-D41-NP	Non-P	Structure	670,437	4,966,409	597.0	32.1	42.2	8,225
CR2-D44-NP	Non-P	Structure	670,434	4,965,956	593.8	31.3	44.3	9,363
CR2-D45-NP	Non-P	Structure	668,018	4,976,064	611.5	39.7	41.0	4,393
CR2-D46-NP	Non-P	Structure	669,797	4,966,804	591.0	33.9	41.8	6,778
CR2-D48-NP	Non-P	Structure	668,923	4,972,998	609.0	39.8	41.4	2,680
CR2-D49-P	Participant	Structure	672,024	4,974,135	583.2	38.8	40.7	3,537
CR2-D50-P	Participant	Structure	672,015	4,967,209	602.8	31.4	44.7	7,247
CR2-D51-NP	Non-P	Structure	675,005	4,970,131	577.8	30.2	40.8	14,977
CR2-D52-NP	Non-P	Structure	667,172	4,971,776	606.0	37.1	39.2	4,583
CR2-D53-P	Participant	Structure	670,392	4,975,925	592.8	45.8	46.9	1,801
CR2-D54-NP	Non-P	Structure	672,012	4,966,477	600.0	30.4	43.6	9,219
CR2-D56-P	Participant	Structure	667,119	4,977,925	612.0	44.0	45.9	2,110
CR2-D62-NP	Non-P	Structure	669,355	4,974,624	609.0	40.9	41.1	2,913
CR2-D63-NP	Non-P	Structure	670,546	4,961,419	615.0	26.4	37.3	20,138
CR2-D64-P	Participant	Structure	669,417	4,978,434	588.0	42.7	43.7	2,425
CR2-D65-NP	Non-P	Structure	670,422	4,966,654	597.0	32.7	41.8	7,424
CR2-D71-NP	Non-P	Structure	669,402	4,979,216	588.0	42.3	43.1	1,975

\* Not included in original submittal



**Table C-1: Crowned Ridge II 200 MW Sound Level Tabular Results Sorted by Receptor ID**  
**Realistic case sound results at land parcel boundaries and occupied structures**  
**Results using GE 2.3-116-90 m HH, GE 2.1-116-80 m HH WTG's**  
**UTM NAD83 Zone 14**  
**Deuel County**  
**continued**

Receptor ID	Participation Status	Type	Easting (m)	Northing (m)	Elevation AMSL (m)	Real Case Sound (dB(A))	7/9/19 Appendix I Report Results	Distance to Nearest Turbine (ft)
CR2-D72-NP	Non-P	Structure	671,925	4,970,149	603.0	33.3	39.1	5,938
CR2-D73-NP	Non-P	Structure	672,072	4,971,556	600.0	33.2	37.8	7,405
CR2-D74-NP	Non-P	Structure	668,130	4,976,068	609.2	39.7	41.0	4,505
CR2-D75-NP	Non-P	Structure	669,473	4,981,625	570.0	35.7	37.1	7,319
CR2-D77-NP	Non-P	Structure	672,044	4,966,468	600.0	30.4	43.7	9,298
CR2-D79-NP	Non-P	Structure	672,172	4,974,737	585.0	41.3	43.0	1,955
CR2-D82-NP	Non-P	Structure	669,855	4,970,718	603.0	35.6	38.3	5,935
CR2-D83-NP	Non-P	Structure	675,891	4,966,810	579.0	28.6	44.0	18,658
CR2-D84-NP	Non-P	Structure	667,159	4,972,169	598.2	37.0	38.8	5,535
CR2-D85-NP	Non-P	Structure	669,593	4,976,302	603.0	44.0	44.7	1,949
CR2-D86-NP	Non-P	Structure	673,842	4,966,875	597.0	29.2	43.8	12,542
CR2-D90-NP	Non-P	Structure	670,516	4,962,327	612.0	27.1	40.6	17,493
CR2-D91-NP	Non-P	Structure	667,546	4,976,173	618.0	40.0	41.4	4,203
CR2-D92-NP	Non-P	Structure	671,159	4,971,610	597.2	34.3	38.4	6,319
CR2-D95-NP	Non-P	Structure	671,994	4,971,562	600.0	33.3	38.0	7,264
CR2-D96-NP	Non-P	Structure	672,899	4,971,469	594.0	32.2	36.4	9,249
CR2-D97-NP	Non-P	Structure	667,164	4,972,232	600.0	37.1	38.8	5,371
CR2-D98-P	Participant	Structure	669,757	4,972,426	606.0	36.6	38.3	5,381
CR2-D99-NP	Non-P	Structure	668,148	4,976,230	608.8	39.8	41.1	4,331
CR2-D100-NP	Non-P	Structure	668,589	4,972,064	609.9	36.9	38.7	4,708
CR2-D101-NP	Non-P	Structure	672,538	4,961,910	612.8	26.4	41.2	22,667
CR2-D103-NP	Non-P	Structure	670,588	4,961,119	615.0	26.2	36.2	21,079
CR2-D104-NP	Non-P	Structure	670,443	4,961,600	613.8	26.6	37.6	19,455
CR2-D105-NP	Non-P	Structure	670,348	4,963,826	611.7	28.6	42.8	13,179
CR2-D106-NP	Non-P	Structure	667,315	4,965,297	594.0	33.2	36.7	5,351
CR2-D107-NP	Non-P	Structure	670,405	4,966,321	597.0	32.0	42.4	8,520
CR2-D108-NP	Non-P	Structure	670,354	4,965,949	594.0	31.4	44.2	9,121
CR2-D109-NP	Non-P	Structure	676,885	4,965,806	576.0	28.2	38.1	22,979
CR2-D110-NP	Non-P	Structure	670,260	4,967,728	597.0	36.5	43.6	4,042
CR2-D111-P	Participant	Structure	671,876	4,969,006	600.0	34.5	44.4	4,180
CR2-D112-NP	Non-P	Structure	667,666	4,971,554	604.6	37.8	40.0	3,553
CR2-D113-NP	Non-P	Structure	667,774	4,971,544	606.9	37.8	40.0	3,537
CR2-D115-P	Participant	Structure	670,974	4,969,938	606.0	36.3	41.0	3,583
CR2-D116-NP	Non-P	Structure	673,491	4,972,398	577.8	32.3	35.5	9,055
CR2-D119-P	Participant	Structure	673,378	4,965,126	602.6	28.3	45.1	15,390
CR2-D120-NP	Non-P	Structure	673,401	4,964,165	609.0	27.7	41.4	18,067
CR2-D121-NP	Non-P	Structure	674,461	4,966,734	594.0	28.9	44.1	14,524
CR2-D122-P	Participant	Structure	673,601	4,967,341	594.0	29.7	44.6	11,092

\* Not included in original submittal

**Table C-1: Crowned Ridge II 200 MW Sound Level Tabular Results Sorted by Receptor ID**  
**Realistic case sound results at land parcel boundaries and occupied structures**  
**Results using GE 2.3-116-90 m HH, GE 2.1-116-80 m HH WTG's**  
**UTM NAD83 Zone 14**  
**Deuel County**  
**continued**

Receptor ID	Participation Status	Type	Easting (m)	Northing (m)	Elevation AMSL (m)	Real Case Sound (dB(A))	7/9/19 Appendix I Report Results	Distance to Nearest Turbine (ft)
CR2-D123-P	Participant	Structure	673,527	4,967,015	596.7	29.5	43.4	11,424
CR2-D124-P	Participant	Structure	671,911	4,967,745	603.0	32.6	43.7	5,738
CR2-D125-NP	Non-P	Structure	670,404	4,966,786	597.0	33.0	41.7	7,001
CR2-D126-NP	Non-P	Structure	670,227	4,967,455	593.3	35.3	42.5	4,934
CR2-D127-NP	Non-P	Structure	668,841	4,969,858	603.0	39.9	42.2	2,894
CR2-D128-NP	Non-P	Structure	668,625	4,967,652	588.0	39.5	43.3	2,779
CR2-D129-NP	Non-P	Structure	669,645	4,973,005	606.0	38.1	39.4	4,511
CR2-D130-NP	Non-P	Structure	672,080	4,973,212	591.0	36.7	42.0	3,776
CR2-D131-P	Participant	Structure	669,471	4,977,139	597.5	44.3	45.6	2,087
CR2-D132-NP	Non-P	Structure	669,497	4,974,128	609.0	41.5	40.8	2,264
CR2-D133-NP	Non-P	Structure	669,661	4,980,356	576.0	37.4	38.7	4,035
CR2-D154-NP	Non-P	Structure	672,205	4,960,261	610.8	25.5	33.6	26,194
CR2-D176-P	Participant	Structure	673,641	4,962,583	609.0	26.7	38.6	23,021
CR2-D180-NP	Non-P	Structure	671,823	4,960,368	615.0	25.6	34.2	25,213
CR2-D189-NP	Non-P	Structure	667,228	4,971,527	606.0	37.7	40.1	3,757
CR2-D190-NP	Non-P	Structure	675,131	4,970,954	573.0	30.5	36.9	16,043
CR2-D192-P	Participant	Structure	669,283	4,971,621	607.2	35.8	37.8	6,499
CR2-D205-NP	Non-P	Structure	670,455	4,960,601	611.6	25.8	34.0	22,437
CR2-D206-NP	Non-P	Structure	676,828	4,963,231	588.0	27.1	34.4	27,637
CR2-D207-NP	Non-P	Structure	676,828	4,963,280	588.0	27.1	34.6	27,529
CR2-D208-P	Participant	Structure	676,741	4,964,971	579.0	27.8	39.4	23,920
CR2-D212-P	Participant	Structure	667,211	4,969,816	608.3	44.3	47.4	1,686
CR2-D213-NP	Non-P	Structure	667,178	4,971,525	606.0	37.6	40.1	3,816
CR2-D220-NP	Non-P	Structure	670,260	4,967,728	597.0	36.5	43.6	4,042
CR2-D221-NP	Non-P	Structure	670,351	4,973,543	606.0	42.5	43.1	2,041
CR2-D222-NP	Non-P	Structure	672,081	4,973,212	591.0	36.7	42.0	3,779
CR2-D223-NP	Non-P	Structure	670,227	4,967,455	593.3	35.3	42.5	4,934
CR2-D224-NP	Non-P	Structure	669,887	4,966,846	590.6	33.9	*	6,795

\* Not included in original submittal



**Table C-2: Crowned Ridge II 200 MW Sound Level Tabular Results Sorted by Sound Level**  
**Realistic case sound results at land parcel boundaries and occupied structures**  
**Results using GE 2.3-116-90 m HH, GE 2.1-116-80 m HH WTG's**  
**UTM NAD83 Zone 14**  
**Codington County**

Receptor ID	Participation Status	Type	Easting (m)	Northing (m)	Elevation AMSL (m)	Real Case Sound (dB(A))	7/9/19 Appendix I Report Results	Distance to Nearest Turbine (ft)
CR2-C97-NP	Non-P	Boundary	660,676	4,976,379	589.3	49.7	49.7	702
CR1-C13-NP	Non-P	Boundary	664,419	4,986,258	615.0	49.4	50.1	758
CR2-C16-NP	Non-P	Boundary	664,794	4,966,949	569.9	49.4	49.4	699
CR2-C37-NP	Non-P	Boundary	662,306	4,974,989	606.0	48.8	48.9	751
CR2-C29-NP	Non-P	Boundary	662,350	4,969,119	594.7	48.8	48.8	738
CR2-C1-NP	Non-P	Boundary	662,584	4,980,838	590.5	48.7	48.9	791
CR2-C62-NP	Non-P	Boundary	666,705	4,976,925	612.0	48.1	48.4	837
CR1-C71-NP	Non-P	Boundary	664,414	4,988,688	600.0	47.8	48.1	909
CR1-C16-NP	Non-P	Boundary	661,642	4,985,677	597.0	47.2	48.7	948
CR1-C15-NP	Non-P	Boundary	662,794	4,986,895	612.9	47.0	47.5	1,017
CR2-C24-NP	Non-P	Boundary	662,346	4,969,319	600.0	46.4	46.5	981
CR2-C79-NP	Non-P	Boundary	666,645	4,984,162	594.4	46.2	47.8	1,119
CR2-C69-NP	Non-P	Boundary	661,200	4,977,610	571.8	46.2	47.7	1,027
CR1-C73-NP	Non-P	Boundary	663,740	4,982,989	591.6	46.0	47.7	1,175
CR2-C40-NP	Non-P	Boundary	659,711	4,975,130	583.9	45.7	45.7	1,178
CR2-C46-NP	Non-P	Boundary	660,215	4,966,435	582.0	45.6	47.3	1,083
CR2-C115-NP	Non-P	Boundary	662,993	4,980,847	561.8	45.4	46.7	1,473
CR2-C53-NP	Non-P	Boundary	661,853	4,964,839	578.5	45.3	47.0	1,138
CR2-C116-NP	Non-P	Boundary	664,686	4,976,878	598.0	45.1	46.8	1,201
CR1-C7-NP	Non-P	Boundary	661,266	4,985,387	591.0	45.0	46.5	1,253
CR2-C134-NP	Non-P	Boundary	667,174	4,973,721	610.9	44.9	46.3	1,496
CR2-C61-NP	Non-P	Boundary	660,672	4,976,784	582.9	44.7	45.2	1,440
CR1-C28-NP	Non-P	Boundary	665,432	4,989,009	583.9	44.6	40.9	1,483
CR1-C12-NP	Non-P	Boundary	662,296	4,986,504	605.2	44.6	44.9	1,444
CR1-C9-NP	Non-P	Boundary	665,266	4,985,122	609.0	44.6	45.5	1,801
CR1-C31-NP	Non-P	Boundary	665,639	4,989,013	584.7	44.2	42.8	1,637
CR2-C64-NP	Non-P	Boundary	661,628	4,964,834	577.9	43.9	45.6	1,355
CR2-C39-NP	Non-P	Boundary	664,405	4,966,557	563.0	43.6	43.9	1,362
CR2-C38-NP	Non-P	Boundary	660,926	4,966,838	588.0	43.5	45.3	1,667
CR2-C10-NP	Non-P	Boundary	664,808	4,966,574	561.0	43.4	43.7	1,391
CR2-C48-NP	Non-P	Boundary	662,312	4,965,660	590.1	43.4	45.3	2,067
CR2-C65-NP	Non-P	Boundary	665,066	4,978,501	606.1	43.3	47.5	1,985
CR2-C75-NP	Non-P	Boundary	665,533	4,969,027	576.4	43.1	44.8	2,051
CR1-C81-NP	Non-P	Boundary	660,516	4,983,200	595.7	42.9	44.5	1,565
CR2-C36-NP	Non-P	Boundary	660,716	4,974,757	580.4	42.5	42.6	2,198
CR1-C29-NP	Non-P	Boundary	666,496	4,989,001	574.3	42.4	39.0	1,952
CR1-C79-NP	Non-P	Boundary	660,498	4,983,685	595.6	41.9	43.4	1,791
CR1-C70-NP	Non-P	Boundary	664,950	4,988,325	596.1	41.4	41.9	2,940
CR2-C54-NP	Non-P	Boundary	662,719	4,976,216	597.0	41.4	42.8	1,939

\* Not included in original submittal

**Table C-2: Crowned Ridge II 200 MW Sound Level Tabular Results Sorted by Sound Level**  
**Realistic case sound results at land parcel boundaries and occupied structures**  
**Results using GE 2.3-116-90 m HH, GE 2.1-116-80 m HH WTG's**  
**UTM NAD83 Zone 14**  
**Codrington County**  
**continued**

Receptor ID	Participation Status	Type	Easting (m)	Northing (m)	Elevation AMSL (m)	Real Case Sound (dB(A))	7/9/19 Appendix I Report Results	Distance to Nearest Turbine (ft)
CR2-C118-NP	Non-P	Boundary	665,548	4,975,288	600.2	41.2	42.8	2,224
CR2-C71-NP	Non-P	Boundary	665,511	4,970,237	582.0	41.1	43.1	2,047
CR2-C135-NP	Non-P	Boundary	667,221	4,966,634	591.0	41.0	43.3	1,854
CR2-C47-NP	Non-P	Boundary	662,128	4,975,739	594.0	40.9	41.1	2,477
CR2-C43-NP	Non-P	Boundary	663,896	4,976,057	596.6	40.9	42.5	2,037
CR1-C87-NP	Non-P	Boundary	662,846	4,982,473	585.1	40.6	42.0	4,193
CR2-C102-NP	Non-P	Boundary	661,983	4,976,005	591.0	40.3	40.4	3,360
CR2-C49-NP	Non-P	Boundary	661,080	4,965,005	582.0	40.3	42.2	2,575
CR2-C42-NP	Non-P	Boundary	665,127	4,975,675	595.6	40.2	41.8	2,474
CR2-C35-NP	Non-P	Boundary	659,114	4,975,104	555.7	40.2	40.4	2,208
CR1-C4-NP	Non-P	Boundary	659,890	4,985,620	605.2	40.1	40.4	3,914
CR2-C52-NP	Non-P	Boundary	662,432	4,964,852	574.4	40.0	41.8	2,218
CR2-C77-NP	Non-P	Boundary	663,124	4,969,545	597.9	39.9	40.6	2,264
CR1-C24-NP	Non-P	Boundary	660,262	4,983,876	599.5	39.2	40.5	2,785
CR2-C107-NP	Non-P	Boundary	662,229	4,977,633	564.3	38.0	39.1	3,547
CR2-C23-NP	Non-P	Boundary	663,922	4,969,541	594.0	37.9	39.3	3,999
CR2-C51-NP	Non-P	Boundary	662,731	4,964,867	584.2	37.9	39.7	3,091
CR2-C55-NP	Non-P	Boundary	660,848	4,964,816	582.0	37.8	39.6	3,438
CR1-C88-NP	Non-P	Boundary	660,240	4,980,801	571.0	37.3	38.6	3,458
CR1-C80-NP	Non-P	Boundary	659,693	4,983,990	603.4	37.2	38.1	4,590
CR2-C7-NP	Non-P	Boundary	665,612	4,966,608	582.0	37.1	38.5	3,547
CR2-C67-NP	Non-P	Boundary	660,639	4,978,403	556.5	36.9	38.0	4,071
CR2-C112-NP	Non-P	Boundary	666,270	4,972,900	602.5	36.8	38.1	5,253
CR2-C95-NP	Non-P	Boundary	659,720	4,974,150	561.0	36.7	36.8	4,390
CR1-C84-NP	Non-P	Boundary	659,796	4,982,364	594.1	36.6	37.7	5,072
CR1-C85-NP	Non-P	Boundary	659,751	4,981,560	587.4	36.2	37.3	4,734
CR2-C80-NP	Non-P	Boundary	665,496	4,971,451	597.0	36.1	37.9	4,501
CR2-C66-NP	Non-P	Boundary	661,881	4,964,060	572.8	35.5	37.2	3,694
CR2-C91-NP	Non-P	Boundary	664,274	4,970,519	594.0	35.5	36.9	6,174
CR2-C72-NP	Non-P	Boundary	663,882	4,970,343	599.2	35.5	36.7	5,860
CR2-C44-NP	Non-P	Boundary	659,186	4,966,434	555.0	35.3	37.0	3,527
CR2-C92-NP	Non-P	Boundary	663,878	4,970,491	597.0	35.2	36.4	6,191
CR2-C93-NP	Non-P	Boundary	659,946	4,973,545	578.6	34.8	35.1	5,827
CR2-C101-NP	Non-P	Boundary	660,765	4,972,985	588.8	34.2	34.7	5,682
CR2-C109-NP	Non-P	Boundary	662,644	4,972,909	606.0	34.2	34.7	6,968
CR2-C104-NP	Non-P	Boundary	661,882	4,972,775	603.0	34.1	34.6	6,243
CR2-C137-NP	Non-P	Boundary	659,035	4,979,157	564.0	34.1	34.8	6,398
CR2-C22-NP	Non-P	Boundary	661,457	4,972,769	597.2	34.0	34.5	6,040

\* Not included in original submittal

**Table C-2: Crowned Ridge II 200 MW Sound Level Tabular Results Sorted by Sound Level**  
**Realistic case sound results at land parcel boundaries and occupied structures**  
**Results using GE 2.3-116-90 m HH, GE 2.1-116-80 m HH WTG's**  
**UTM NAD83 Zone 14**  
**Codrington County**  
**continued**

Receptor ID	Participation Status	Type	Easting (m)	Northing (m)	Elevation AMSL (m)	Real Case Sound (dB(A))	7/9/19 Appendix I Report Results	Distance to Nearest Turbine (ft)
CR2-C87-NP	Non-P	Boundary	662,990	4,971,076	603.0	33.8	34.6	6,542
CR2-C89-NP	Non-P	Boundary	662,304	4,970,980	603.0	33.5	34.2	6,145
CR2-C151-NP	Non-P	Boundary	663,729	4,964,513	554.3	33.5	35.0	6,486
CR2-C3-NP	Non-P	Boundary	664,052	4,964,700	555.0	33.4	34.9	6,552
CR2-C142-NP	Non-P	Boundary	657,486	4,977,150	549.0	33.4	34.1	5,846
CR2-C100-NP	Non-P	Boundary	660,637	4,972,733	591.0	33.4	33.9	6,604
CR2-C143-NP	Non-P	Boundary	657,478	4,977,453	561.6	33.2	34.0	5,919
CR2-C30-NP	Non-P	Boundary	659,189	4,967,871	566.6	33.1	34.4	4,938
CR2-C74-NP	Non-P	Boundary	660,737	4,969,659	585.4	32.9	33.6	6,279
CR2-C68-NP	Non-P	Boundary	662,455	4,963,673	580.3	32.9	34.5	5,354
CR2-C41-P	Participant	Boundary	660,695	4,975,584	598.4	51.4	51.2	617
CR1-C77-P	Participant	Boundary	660,965	4,983,217	584.0	51.1	52.6	558
CR1-C68-P	Participant	Boundary	662,024	4,987,612	604.9	51.0	51.0	640
CR1-C11-P	Participant	Boundary	664,225	4,984,910	608.6	50.8	51.1	699
CR2-C78-P	Participant	Boundary	665,321	4,983,408	608.5	50.7	52.3	705
CR2-C154-P	Participant	Boundary	660,033	4,966,759	577.9	50.5	52.1	577
CR2-C60-P	Participant	Boundary	663,492	4,976,270	596.4	50.4	52.0	604
CR1-C10-P	Participant	Boundary	662,977	4,984,084	601.7	50.2	51.8	702
CR2-C27-P	Participant	Boundary	662,571	4,969,314	587.3	50.2	50.3	617
CR2-C26-P	Participant	Boundary	664,502	4,968,179	580.8	50.1	51.6	640
CR2-C50-P	Participant	Boundary	660,674	4,976,401	574.5	49.7	49.6	705
CR1-C86-P	Participant	Boundary	661,252	4,981,612	589.8	47.9	49.6	1,070
CR1-C18-P	Participant	Boundary	664,394	4,987,007	610.2	47.6	49.0	955
CR2-C33-P	Participant	Boundary	663,452	4,968,137	580.8	47.2	48.8	922
CR2-C128-P	Participant	Boundary	667,185	4,968,243	579.7	46.8	48.2	1,079
CR2-C63-P	Participant	Boundary	666,292	4,977,116	610.5	46.6	47.1	1,027
CR2-C59-P	Participant	Boundary	664,882	4,976,884	603.0	46.4	48.1	1,024
CR2-C57-P	Participant	Boundary	666,460	4,976,511	615.0	46.1	46.6	1,119
CR1-C20-P	Participant	Boundary	663,107	4,987,598	605.1	44.4	44.5	1,834
CR2-C70-P	Participant	Boundary	665,711	4,970,192	583.7	43.9	45.9	1,398
CR2-C78-P	Participant	Boundary	660,509	4,983,361	601.0	43.4	52.3	705
CR2-C32-P	Participant	Boundary	660,020	4,967,239	573.0	41.7	43.4	1,673
CR1-C8-P	Participant	Boundary	661,277	4,984,852	597.0	41.5	43.0	2,139
CR2-C123-P	Participant	Boundary	665,581	4,967,412	573.5	39.0	40.5	3,579
CR2-C45-P	Participant	Boundary	664,019	4,965,873	570.0	37.0	38.3	3,934
CR2-C31-P	Participant	Boundary	662,360	4,973,292	606.0	35.2	35.8	5,407
CR2-C28-P	Participant	Boundary	659,999	4,968,048	567.1	34.8	36.2	4,265
CR2-C99-P	Participant	Boundary	660,483	4,972,731	585.6	33.3	33.7	6,811

\* Not included in original submittal

**Table C-2: Crowned Ridge II 200 MW Sound Level Tabular Results Sorted by Sound Level**  
**Realistic case sound results at land parcel boundaries and occupied structures**  
**Results using GE 2.3-116-90 m HH, GE 2.1-116-80 m HH WTG's**  
**UTM NAD83 Zone 14**  
**Codington County**  
**continued**

Receptor ID	Participation Status	Type	Easting (m)	Northing (m)	Elevation AMSL (m)	Real Case Sound (dB(A))	7/9/19 Appendix I Report Results	Distance to Nearest Turbine (ft)
CR2-C98-NP	Non-P	Structure	660,155	4,976,007	582.8	44.9	44.8	1,749
CR2-C97-NP	Non-P	Structure	660,093	4,976,001	583.8	44.8	44.8	1,814
CR2-C61-NP	Non-P	Structure	660,630	4,976,840	582.5	43.9	44.5	1,667
CR1-C9-NP	Non-P	Structure	665,352	4,985,004	609.0	43.7	44.9	2,280
CR1-C31-NP	Non-P	Structure	665,939	4,988,950	585.4	43.1	39.6	2,126
CR2-C62-NP	Non-P	Structure	666,992	4,977,048	615.0	42.9	43.9	1,860
CR2-C38-NP	Non-P	Structure	660,874	4,966,929	585.5	42.8	44.6	1,906
CR2-C48-NP	Non-P	Structure	662,370	4,965,588	590.3	42.8	44.7	2,172
CR1-C13-NP	Non-P	Structure	663,792	4,985,785	612.0	42.6	43.9	2,589
CR1-C74-NP	Non-P	Structure	662,869	4,983,122	595.7	42.6	44.2	2,480
CR1-C16-NP	Non-P	Structure	661,960	4,986,288	606.0	42.2	42.9	2,648
CR2-C132-NP	Non-P	Structure	666,857	4,985,021	588.2	42.2	43.8	1,883
CR2-C2-NP	Non-P	Structure	662,238	4,980,604	590.9	42.1	42.8	1,880
CR1-C12-NP	Non-P	Structure	662,222	4,985,736	603.0	42.0	43.7	2,201
CR2-C65-NP	Non-P	Structure	665,217	4,977,746	609.0	42.0	44.3	2,139
CR2-C1-NP	Non-P	Structure	662,198	4,980,622	591.0	42.0	42.7	1,909
CR1-C12-1-NP	Non-P	Structure	662,199	4,986,047	606.0	41.8	43.0	2,818
CR2-C131-NP	Non-P	Structure	666,732	4,984,987	591.0	41.4	43.0	2,287
CR1-C28-NP	Non-P	Structure	665,429	4,988,598	590.9	41.3	40.1	2,831
CR2-C79-NP	Non-P	Structure	666,869	4,984,663	587.9	41.3	43.0	2,703
CR1-C71-NP	Non-P	Structure	665,137	4,988,378	595.6	41.1	40.9	3,448
CR1-C15-NP	Non-P	Structure	663,291	4,986,026	615.0	41.0	43.2	3,907
CR1-C29-NP	Non-P	Structure	666,572	4,988,867	575.9	41.0	38.6	2,457
CR1-C79-NP	Non-P	Structure	660,452	4,983,750	595.9	41.0	42.5	2,037
CR1-C70-NP	Non-P	Structure	665,135	4,988,293	595.9	40.9	40.9	3,540
CR1-C75-NP	Non-P	Structure	663,010	4,982,658	588.0	40.9	42.4	3,730
CR1-C73-NP	Non-P	Structure	663,066	4,982,530	591.0	40.8	42.3	3,704
CR1-C76-NP	Non-P	Structure	662,981	4,982,580	588.3	40.8	42.3	3,901
CR1-C72-NP	Non-P	Structure	665,158	4,988,170	594.6	40.7	41.1	3,776
CR2-C115-NP	Non-P	Structure	663,555	4,980,564	575.2	40.7	42.1	2,520
CR2-C54-NP	Non-P	Structure	662,636	4,976,079	597.0	40.6	41.8	2,287
CR1-C87-NP	Non-P	Structure	662,628	4,982,425	585.4	40.5	41.9	4,258
CR2-C47-NP	Non-P	Structure	662,200	4,975,837	594.5	40.3	40.7	2,821
CR2-C39-NP	Non-P	Structure	664,089	4,966,486	566.2	40.2	40.9	2,178
CR2-C102-NP	Non-P	Structure	662,025	4,976,085	594.1	40.0	40.3	3,609
CR2-C103-NP	Non-P	Structure	662,046	4,976,067	594.8	40.0	40.3	3,547
CR1-C7-NP	Non-P	Structure	660,893	4,984,861	593.2	39.9	41.1	3,022
CR2-C105-NP	Non-P	Structure	662,122	4,976,029	595.3	39.9	40.3	3,425

\* Not included in original submittal

**Table C-2: Crowned Ridge II 200 MW Sound Level Tabular Results Sorted by Sound Level**  
**Realistic case sound results at land parcel boundaries and occupied structures**  
**Results using GE 2.3-116-90 m HH, GE 2.1-116-80 m HH WTG's**  
**UTM NAD83 Zone 14**  
**Codington County**  
**continued**

Receptor ID	Participation Status	Type	Easting (m)	Northing (m)	Elevation AMSL (m)	Real Case Sound (dB(A))	7/9/19 Appendix I Report Results	Distance to Nearest Turbine (ft)
CR2-C36-NP	Non-P	Structure	660,475	4,974,426	578.6	39.8	40.1	2,992
CR2-C53-NP	Non-P	Structure	662,401	4,964,782	582.0	39.7	41.5	2,257
CR2-C46-NP	Non-P	Structure	660,435	4,965,627	582.0	39.5	41.3	2,569
CR2-C117-NP	Non-P	Structure	664,742	4,976,142	594.2	39.4	40.9	3,481
CR2-C71-NP	Non-P	Structure	665,411	4,970,503	586.1	39.4	41.4	2,529
CR2-C134-NP	Non-P	Structure	667,097	4,973,011	613.0	39.3	40.8	3,363
CR2-C116-NP	Non-P	Structure	664,640	4,976,142	591.1	39.2	40.7	3,533
CR2-C10-NP	Non-P	Structure	665,189	4,966,505	570.0	38.9	39.7	2,438
CR1-C24-NP	Non-P	Structure	660,176	4,983,887	601.1	38.7	39.9	3,038
CR2-C16-NP	Non-P	Structure	665,418	4,966,866	567.0	38.7	39.6	2,756
CR2-C40-NP	Non-P	Structure	659,189	4,974,765	578.3	38.5	38.6	2,841
CR1-C67-NP	Non-P	Structure	659,789	4,985,057	606.0	38.4	38.8	5,791
CR1-C81-NP	Non-P	Structure	660,062	4,983,083	597.0	38.4	39.7	3,094
CR2-C42-NP	Non-P	Structure	664,887	4,975,388	597.0	38.4	39.7	3,566
CR1-C66-NP	Non-P	Structure	659,718	4,985,032	606.0	38.3	38.7	5,800
CR2-C49-NP	Non-P	Structure	660,907	4,964,846	582.0	38.3	40.1	3,271
CR1-C5-NP	Non-P	Structure	659,958	4,984,794	604.8	38.1	38.7	5,659
CR2-C75-NP	Non-P	Structure	664,866	4,969,808	583.7	38.0	39.7	4,396
CR2-C76-NP	Non-P	Structure	664,747	4,969,738	584.8	37.9	39.5	4,560
CR1-C4-NP	Non-P	Structure	659,744	4,984,749	606.0	37.8	38.3	5,981
CR2-C43-NP	Non-P	Structure	664,382	4,975,544	597.0	37.8	39.1	4,232
CR2-C52-NP	Non-P	Structure	662,688	4,964,792	585.9	37.8	39.6	3,054
CR2-C37-NP	Non-P	Structure	663,037	4,974,496	606.0	37.5	38.0	3,537
CR2-C135-NP	Non-P	Structure	667,172	4,966,196	595.2	37.4	40.0	2,884
CR2-C23-NP	Non-P	Structure	664,069	4,969,661	594.0	37.4	38.8	4,439
CR2-C136-NP	Non-P	Structure	667,209	4,966,166	595.4	37.3	40.0	2,887
CR2-C77-NP	Non-P	Structure	663,865	4,969,694	597.0	37.3	38.6	4,406
CR2-C119-NP	Non-P	Structure	665,052	4,974,682	600.0	37.2	38.4	4,760
CR2-C118-NP	Non-P	Structure	665,014	4,974,639	600.0	37.1	38.2	4,947
CR2-C55-NP	Non-P	Structure	660,765	4,964,777	582.0	37.1	38.9	3,655
CR2-C107-NP	Non-P	Structure	662,265	4,978,194	577.7	37.0	38.0	4,564
CR2-C56-NP	Non-P	Structure	660,759	4,964,737	582.0	36.9	38.7	3,786
CR2-C58-NP	Non-P	Structure	660,764	4,964,686	582.0	36.7	38.4	3,904
CR1-C88-NP	Non-P	Structure	660,156	4,980,595	570.9	36.5	37.6	4,045
CR2-C51-NP	Non-P	Structure	662,977	4,964,794	584.0	36.4	38.2	3,934
CR2-C69-NP	Non-P	Structure	661,701	4,978,792	564.0	36.4	37.3	5,171
CR2-C29-NP	Non-P	Structure	661,223	4,968,144	595.2	36.2	37.6	4,639
CR2-C67-NP	Non-P	Structure	660,379	4,978,592	556.1	36.2	37.1	5,033

\* Not included in original submittal



**Table C-2: Crowned Ridge II 200 MW Sound Level Tabular Results Sorted by Sound Level**  
**Realistic case sound results at land parcel boundaries and occupied structures**  
**Results using GE 2.3-116-90 m HH, GE 2.1-116-80 m HH WTG's**  
**UTM NAD83 Zone 14**  
**Codrington County**  
**continued**

Receptor ID	Participation Status	Type	Easting (m)	Northing (m)	Elevation AMSL (m)	Real Case Sound (dB(A))	7/9/19 Appendix I Report Results	Distance to Nearest Turbine (ft)
CR1-C80-NP	Non-P	Structure	659,351	4,983,174	604.4	36.0	36.8	5,308
CR1-C84-NP	Non-P	Structure	659,607	4,982,216	594.0	36.0	37.0	5,856
CR1-C85-NP	Non-P	Structure	659,706	4,981,419	588.0	36.0	37.0	4,819
CR2-C112-NP	Non-P	Structure	665,928	4,972,630	603.0	35.8	37.1	6,575
CR2-C7-NP	Non-P	Structure	665,694	4,966,179	570.0	35.6	37.1	4,409
CR2-C35-NP	Non-P	Structure	658,964	4,974,334	566.8	35.5	35.6	4,432
CR2-C24-NP	Non-P	Structure	661,541	4,969,653	600.0	35.4	36.0	3,809
CR2-C96-NP	Non-P	Structure	659,316	4,974,063	570.6	35.4	35.5	4,813
CR2-C72-NP	Non-P	Structure	663,856	4,970,488	597.0	35.2	36.3	6,135
CR2-C95-NP	Non-P	Structure	659,248	4,974,054	567.0	35.2	35.3	4,898
CR2-C91-NP	Non-P	Structure	663,938	4,970,546	597.0	35.1	36.3	6,457
CR2-C92-NP	Non-P	Structure	663,855	4,970,535	597.0	35.1	36.3	6,247
CR2-C90-NP	Non-P	Structure	664,088	4,970,672	594.0	35.0	36.3	6,863
CR2-C64-NP	Non-P	Structure	660,901	4,964,220	582.0	34.8	36.4	4,429
CR2-C80-NP	Non-P	Structure	664,705	4,972,092	597.3	34.4	35.6	7,684
CR2-C66-NP	Non-P	Structure	662,396	4,963,954	582.0	34.3	35.9	4,429
CR2-C44-NP	Non-P	Structure	659,145	4,966,062	561.4	34.2	35.8	4,183
CR2-C109-NP	Non-P	Structure	662,699	4,972,874	606.0	34.1	34.7	7,169
CR2-C104-NP	Non-P	Structure	662,109	4,972,735	604.0	34.0	34.5	6,608
CR2-C137-NP	Non-P	Structure	658,951	4,979,194	568.2	33.9	34.6	6,555
CR2-C106-NP	Non-P	Structure	662,165	4,972,711	604.7	33.9	34.5	6,749
CR2-C22-NP	Non-P	Structure	661,202	4,972,711	597.0	33.8	34.3	6,247
CR2-C101-NP	Non-P	Structure	660,732	4,972,807	591.0	33.7	34.1	6,266
CR2-C86-NP	Non-P	Structure	662,880	4,971,302	603.0	33.5	34.3	7,208
CR2-C87-NP	Non-P	Structure	662,841	4,971,294	603.0	33.5	34.3	7,165
CR2-C89-NP	Non-P	Structure	662,244	4,971,076	603.0	33.4	34.0	6,489
CR2-C100-NP	Non-P	Structure	660,592	4,972,602	591.0	33.1	33.5	7,057
CR2-C151-NP	Non-P	Structure	663,934	4,964,475	556.1	33.0	34.6	6,929
CR2-C3-NP	Non-P	Structure	664,345	4,964,571	556.0	32.7	34.2	7,497
CR2-C93-NP	Non-P	Structure	659,203	4,973,158	584.9	32.7	32.9	7,792
CR2-C155-NP	Non-P	Structure	657,554	4,975,128	554.6	32.6	*	7,034
CR2-C30-NP	Non-P	Structure	659,100	4,968,023	568.6	32.5	33.7	5,502
CR2-C74-NP	Non-P	Structure	660,687	4,969,931	586.5	32.5	33.2	6,732
CR2-C94-NP	Non-P	Structure	659,202	4,973,052	583.9	32.5	32.7	8,133
CR2-C143-NP	Non-P	Structure	657,016	4,977,505	553.6	32.0	32.5	7,444
CR2-C68-NP	Non-P	Structure	662,517	4,963,408	579.0	31.9	33.4	6,237
CR2-C142-NP	Non-P	Structure	656,697	4,977,269	566.9	31.4	31.8	8,432
CR2-C41-P	Participant	Structure	660,770	4,975,147	596.4	45.4	43.6	1,532

\* Not included in original submittal

**Table C-2: Crowned Ridge II 200 MW Sound Level Tabular Results Sorted by Sound Level**  
**Realistic case sound results at land parcel boundaries and occupied structures**  
**Results using GE 2.3-116-90 m HH, GE 2.1-116-80 m HH WTG's**  
**UTM NAD83 Zone 14**  
**Codington County**  
**continued**

Receptor ID	Participation Status	Type	Easting (m)	Northing (m)	Elevation AMSL (m)	Real Case Sound (dB(A))	7/9/19 Appendix I Report Results	Distance to Nearest Turbine (ft)
CR2-C78-P	Participant	Structure	665,273	4,983,933	609.0	45.3	46.9	1,919
CR1-C68-P	Participant	Structure	662,652	4,987,606	609.0	45.1	45.2	2,146
CR1-C69-P	Participant	Structure	662,685	4,987,619	609.0	45.0	45.1	2,185
CR2-C50-P	Participant	Structure	661,252	4,976,035	597.0	44.7	43.5	1,696
CR1-C11-P	Participant	Structure	664,111	4,985,679	609.0	44.5	45.2	1,860
CR1-C20-P	Participant	Structure	663,054	4,987,455	606.0	43.7	43.9	2,336
CR1-C77-P	Participant	Structure	661,915	4,983,367	591.0	43.6	45.2	1,654
CR1-C10-P	Participant	Structure	663,510	4,985,195	609.0	43.2	45.8	2,346
CR2-C59-P	Participant	Structure	664,952	4,976,698	601.9	42.9	44.6	1,654
CR2-C57-P	Participant	Structure	666,667	4,976,162	613.8	42.4	43.6	2,362
CR2-C27-P	Participant	Structure	662,985	4,968,167	582.0	42.3	43.8	1,726
CR1-C89-P	Participant	Structure	662,062	4,982,029	584.3	42.0	43.5	2,165
CR2-C63-P	Participant	Structure	665,528	4,977,285	612.0	42.0	43.9	2,185
CR1-C18-P	Participant	Structure	663,651	4,987,157	610.4	41.9	42.6	3,409
CR1-C86-P	Participant	Structure	662,086	4,982,135	585.0	41.7	43.2	2,306
CR2-C26-P	Participant	Structure	664,733	4,968,915	591.0	41.7	43.4	1,959
CR2-C154-P	Participant	Structure	660,684	4,967,166	588.0	41.5	43.3	2,041
CR2-C133-P	Participant	Structure	666,992	4,967,681	571.2	40.7	43.0	3,002
CR2-C34-P	Participant	Structure	663,934	4,966,991	570.1	40.7	41.5	2,133
CR1-C21-P	Participant	Structure	660,756	4,984,086	594.0	40.5	41.9	2,388
CR1-C22-P	Participant	Structure	660,755	4,984,082	594.0	40.5	41.9	2,375
CR2-C33-P	Participant	Structure	663,878	4,967,612	576.1	40.4	41.8	2,999
CR2-C70-P	Participant	Structure	665,521	4,970,518	588.9	40.2	42.3	2,215
CR1-C23-P	Participant	Structure	660,619	4,984,078	595.8	40.1	41.4	2,523
CR1-C78-P	Participant	Structure	660,190	4,983,788	602.3	39.0	40.3	2,835
CR1-C25-P	Participant	Structure	660,190	4,983,788	602.3	39.0	40.3	2,838
CR1-C8-P	Participant	Structure	660,532	4,984,445	599.4	38.9	39.9	3,740
CR2-C60-P	Participant	Structure	662,287	4,976,800	594.0	38.9	39.9	3,793
CR2-C129-P	Participant	Structure	666,716	4,966,751	591.0	37.6	39.8	3,356
CR2-C130-P	Participant	Structure	666,727	4,966,695	591.0	37.5	39.8	3,350
CR2-C128-P	Participant	Structure	666,636	4,966,649	589.0	37.0	39.3	3,671
CR2-C45-P	Participant	Structure	664,058	4,965,862	570.0	36.9	38.2	3,907
CR2-C126-P	Participant	Structure	666,389	4,966,670	585.0	36.6	38.6	4,455
CR2-C123-P	Participant	Structure	666,146	4,966,653	579.4	36.4	38.2	5,216
CR2-C31-P	Participant	Structure	663,117	4,972,923	606.0	34.1	34.7	7,579
CR2-C32-P	Participant	Structure	659,469	4,967,984	575.2	33.6	35.0	4,678
CR2-C99-P	Participant	Structure	660,584	4,972,570	591.0	33.1	33.5	7,165
CR2-C28-P	Participant	Structure	659,208	4,968,159	572.8	32.4	33.7	5,630

\* Not included in original submittal

**Table C-2: Crowned Ridge II 200 MW Sound Level Tabular Results Sorted by Sound Level**  
**Realistic case sound results at land parcel boundaries and occupied structures**  
**Results using GE 2.3-116-90 m HH, GE 2.1-116-80 m HH WTG's**  
**UTM NAD83 Zone 14**  
**Deuel County**  
**continued**

Receptor ID	Participation Status	Type	Easting (m)	Northing (m)	Elevation AMSL (m)	Real Case Sound (dB(A))	7/9/19 Appendix I Report Results	Distance to Nearest Turbine (ft)
CR2-D85-NP	Non-P	Structure	669,593	4,976,302	603.0	44.0	44.7	1,949
CR2-D21-NP	Non-P	Structure	669,517	4,978,053	596.1	43.7	44.7	1,985
CR2-D221-NP	Non-P	Structure	670,351	4,973,543	606.0	42.5	43.1	2,041
CR2-D14-NP	Non-P	Structure	670,351	4,973,543	606.0	42.5	43.1	2,041
CR2-D11-NP	Non-P	Structure	669,646	4,974,534	604.4	42.4	40.8	1,919
CR2-D71-NP	Non-P	Structure	669,402	4,979,216	588.0	42.3	43.1	1,975
CR2-D30-NP	Non-P	Structure	669,549	4,974,233	611.9	42.0	40.8	2,044
CR2-D12-NP	Non-P	Structure	668,558	4,969,840	604.7	41.8	44.0	2,051
CR2-D18-NP	Non-P	Structure	671,540	4,976,154	582.0	41.6	43.2	2,201
CR2-D132-NP	Non-P	Structure	669,497	4,974,128	609.0	41.5	40.8	2,264
CR2-D79-NP	Non-P	Structure	672,172	4,974,737	585.0	41.3	43.0	1,955
CR2-D62-NP	Non-P	Structure	669,355	4,974,624	609.0	40.9	41.1	2,913
CR2-D91-NP	Non-P	Structure	667,546	4,976,173	618.0	40.0	41.4	4,203
CR2-D127-NP	Non-P	Structure	668,841	4,969,858	603.0	39.9	42.2	2,894
CR2-D99-NP	Non-P	Structure	668,148	4,976,230	608.8	39.8	41.1	4,331
CR2-D48-NP	Non-P	Structure	668,923	4,972,998	609.0	39.8	41.4	2,680
CR2-D45-NP	Non-P	Structure	668,018	4,976,064	611.5	39.7	41.0	4,393
CR2-D74-NP	Non-P	Structure	668,130	4,976,068	609.2	39.7	41.0	4,505
CR2-D128-NP	Non-P	Structure	668,625	4,967,652	588.0	39.5	43.3	2,779
CR2-D129-NP	Non-P	Structure	669,645	4,973,005	606.0	38.1	39.4	4,511
CR2-D112-NP	Non-P	Structure	667,666	4,971,554	604.6	37.8	40.0	3,553
CR2-D113-NP	Non-P	Structure	667,774	4,971,544	606.9	37.8	40.0	3,537
CR2-D189-NP	Non-P	Structure	667,228	4,971,527	606.0	37.7	40.1	3,757
CR2-D213-NP	Non-P	Structure	667,178	4,971,525	606.0	37.6	40.1	3,816
CR2-D133-NP	Non-P	Structure	669,661	4,980,356	576.0	37.4	38.7	4,035
CR2-D97-NP	Non-P	Structure	667,164	4,972,232	600.0	37.1	38.8	5,371
CR2-D52-NP	Non-P	Structure	667,172	4,971,776	606.0	37.1	39.2	4,583
CR2-D23-NP	Non-P	Structure	669,671	4,980,468	573.0	37.1	38.4	4,380
CR2-D84-NP	Non-P	Structure	667,159	4,972,169	598.2	37.0	38.8	5,535
CR2-D100-NP	Non-P	Structure	668,589	4,972,064	609.9	36.9	38.7	4,708
CR2-D9-NP	Non-P	Structure	668,597	4,971,999	611.5	36.8	38.6	4,921
CR2-D130-NP	Non-P	Structure	672,080	4,973,212	591.0	36.7	42.0	3,776
CR2-D222-NP	Non-P	Structure	672,081	4,973,212	591.0	36.7	42.0	3,779
CR2-D220-NP	Non-P	Structure	670,260	4,967,728	597.0	36.5	43.6	4,042
CR2-D110-NP	Non-P	Structure	670,260	4,967,728	597.0	36.5	43.6	4,042
CR2-D75-NP	Non-P	Structure	669,473	4,981,625	570.0	35.7	37.1	7,319
CR2-D82-NP	Non-P	Structure	669,855	4,970,718	603.0	35.6	38.3	5,935
CR2-D126-NP	Non-P	Structure	670,227	4,967,455	593.3	35.3	42.5	4,934

\* Not included in original submittal

**Table C-2: Crowned Ridge II 200 MW Sound Level Tabular Results Sorted by Sound Level**  
**Realistic case sound results at land parcel boundaries and occupied structures**  
**Results using GE 2.3-116-90 m HH, GE 2.1-116-80 m HH WTG's**  
**UTM NAD83 Zone 14**  
**Deuel County**  
**continued**

Receptor ID	Participation Status	Type	Easting (m)	Northing (m)	Elevation AMSL (m)	Real Case Sound (dB(A))	7/9/19 Appendix I Report Results	Distance to Nearest Turbine (ft)
CR2-D223-NP	Non-P	Structure	670,227	4,967,455	593.3	35.3	42.5	4,934
CR2-D92-NP	Non-P	Structure	671,159	4,971,610	597.2	34.3	38.4	6,319
CR2-D46-NP	Non-P	Structure	669,797	4,966,804	591.0	33.9	41.8	6,778
CR2-D224-NP	Non-P	Structure	669,887	4,966,846	590.6	33.9	*	6,795
CR2-D36-NP	Non-P	Structure	669,812	4,966,746	591.0	33.8	41.9	6,837
CR2-D17-NP	Non-P	Structure	672,023	4,969,597	597.0	33.5	41.4	5,167
CR2-D72-NP	Non-P	Structure	671,925	4,970,149	603.0	33.3	39.1	5,938
CR2-D95-NP	Non-P	Structure	671,994	4,971,562	600.0	33.3	38.0	7,264
CR2-D106-NP	Non-P	Structure	667,315	4,965,297	594.0	33.2	36.7	5,351
CR2-D73-NP	Non-P	Structure	672,072	4,971,556	600.0	33.2	37.8	7,405
CR2-D37-NP	Non-P	Structure	674,048	4,974,071	573.0	33.1	34.8	6,542
CR2-D125-NP	Non-P	Structure	670,404	4,966,786	597.0	33.0	41.7	7,001
CR2-D65-NP	Non-P	Structure	670,422	4,966,654	597.0	32.7	41.8	7,424
CR2-D116-NP	Non-P	Structure	673,491	4,972,398	577.8	32.3	35.5	9,055
CR2-D96-NP	Non-P	Structure	672,899	4,971,469	594.0	32.2	36.4	9,249
CR2-D41-NP	Non-P	Structure	670,437	4,966,409	597.0	32.1	42.2	8,225
CR2-D107-NP	Non-P	Structure	670,405	4,966,321	597.0	32.0	42.4	8,520
CR2-D108-NP	Non-P	Structure	670,354	4,965,949	594.0	31.4	44.2	9,121
CR2-D44-NP	Non-P	Structure	670,434	4,965,956	593.8	31.3	44.3	9,363
CR2-D5-NP	Non-P	Structure	668,781	4,964,897	603.0	31.2	39.7	7,342
CR2-D190-NP	Non-P	Structure	675,131	4,970,954	573.0	30.5	36.9	16,043
CR2-D77-NP	Non-P	Structure	672,044	4,966,468	600.0	30.4	43.7	9,298
CR2-D54-NP	Non-P	Structure	672,012	4,966,477	600.0	30.4	43.6	9,219
CR2-D51-NP	Non-P	Structure	675,005	4,970,131	577.8	30.2	40.8	14,977
CR2-D19-NP	Non-P	Structure	668,870	4,964,178	606.0	29.9	42.2	9,600
CR2-D15-NP	Non-P	Structure	674,387	4,968,515	588.0	29.8	43.3	12,474
CR2-D20-NP	Non-P	Structure	675,261	4,968,400	579.0	29.4	44.0	15,364
CR2-D22-NP	Non-P	Structure	668,798	4,963,767	603.1	29.3	41.5	10,777
CR2-D86-NP	Non-P	Structure	673,842	4,966,875	597.0	29.2	43.8	12,542
CR2-D121-NP	Non-P	Structure	674,461	4,966,734	594.0	28.9	44.1	14,524
CR2-D105-NP	Non-P	Structure	670,348	4,963,826	611.7	28.6	42.8	13,179
CR2-D83-NP	Non-P	Structure	675,891	4,966,810	579.0	28.6	44.0	18,658
CR2-D109-NP	Non-P	Structure	676,885	4,965,806	576.0	28.2	38.1	22,979
CR2-D120-NP	Non-P	Structure	673,401	4,964,165	609.0	27.7	41.4	18,067
CR2-D3-NP	Non-P	Structure	672,390	4,963,482	612.0	27.5	44.7	18,746
CR2-D90-NP	Non-P	Structure	670,516	4,962,327	612.0	27.1	40.6	17,493
CR2-D206-NP	Non-P	Structure	676,828	4,963,231	588.0	27.1	34.4	27,637
CR2-D207-NP	Non-P	Structure	676,828	4,963,280	588.0	27.1	34.6	27,529

\* Not included in original submittal

Table C-2: Crowned Ridge II 200 MW Sound Level Tabular Results Sorted by Sound Level  
 Realistic case sound results at land parcel boundaries and occupied structures  
 Results using GE 2.3-116-90 m HH, GE 2.1-116-80 m HH WTG's  
 UTM NAD83 Zone 14  
 Deuel County  
 continued

Receptor ID	Participation Status	Type	Easting (m)	Northing (m)	Elevation AMSL (m)	Real Case Sound (dB(A))	7/9/19 Appendix I Report Results	Distance to Nearest Turbine (ft)
CR2-D104-NP	Non-P	Structure	670,443	4,961,600	613.8	26.6	37.6	19,455
CR2-D101-NP	Non-P	Structure	672,538	4,961,910	612.8	26.4	41.2	22,667
CR2-D63-NP	Non-P	Structure	670,546	4,961,419	615.0	26.4	37.3	20,138
CR2-D103-NP	Non-P	Structure	670,588	4,961,119	615.0	26.2	36.2	21,079
CR2-D205-NP	Non-P	Structure	670,455	4,960,601	611.6	25.8	34.0	22,437
CR2-D180-NP	Non-P	Structure	671,823	4,960,368	615.0	25.6	34.2	25,213
CR2-D154-NP	Non-P	Structure	672,205	4,960,261	610.8	25.5	33.6	26,194
CR2-D53-P	Participant	Structure	670,392	4,975,925	592.8	45.8	46.9	1,801
CR2-D212-P	Participant	Structure	667,211	4,969,816	608.3	44.3	47.4	1,686
CR2-D131-P	Participant	Structure	669,471	4,977,139	597.5	44.3	45.6	2,087
CR2-D39-P	Participant	Structure	668,443	4,974,627	614.4	44.0	45.6	1,706
CR2-D56-P	Participant	Structure	667,119	4,977,925	612.0	44.0	45.9	2,110
CR2-D38-P	Participant	Structure	667,108	4,982,083	597.0	44.0	46.8	1,693
CR2-D64-P	Participant	Structure	669,417	4,978,434	588.0	42.7	43.7	2,425
CR2-D6-P	Participant	Structure	668,762	4,967,671	591.0	39.2	43.1	2,844
CR2-D49-P	Participant	Structure	672,024	4,974,135	583.2	38.8	40.7	3,537
CR2-D98-P	Participant	Structure	669,757	4,972,426	606.0	36.6	38.3	5,381
CR2-D115-P	Participant	Structure	670,974	4,969,938	606.0	36.3	41.0	3,583
CR2-D192-P	Participant	Structure	669,283	4,971,621	607.2	35.8	37.8	6,499
CR2-D111-P	Participant	Structure	671,876	4,969,006	600.0	34.5	44.4	4,180
CR2-D124-P	Participant	Structure	671,911	4,967,745	603.0	32.6	43.7	5,738
CR2-D50-P	Participant	Structure	672,015	4,967,209	602.8	31.4	44.7	7,247
CR2-D16-P	Participant	Structure	671,626	4,966,693	601.7	31.2	44.1	8,005
CR2-D122-P	Participant	Structure	673,601	4,967,341	594.0	29.7	44.6	11,092
CR2-D123-P	Participant	Structure	673,527	4,967,015	596.7	29.5	43.4	11,424
CR2-D119-P	Participant	Structure	673,378	4,965,126	602.6	28.3	45.1	15,390
CR2-D208-P	Participant	Structure	676,741	4,964,971	579.0	27.8	39.4	23,920
CR2-D176-P	Participant	Structure	673,641	4,962,583	609.0	26.7	38.6	23,021

\* Not included in original submittal



**Table C-3: Crowned Ridge II 200 MW Sound Level Tabular Results Sorted by Sound Level**  
**Realistic case sound results 25 ft from occupied structures perimeter**  
**Results using GE 2.3-116-90 m HH, GE 2.1-116-80 m HH WTG's**  
**UTM NAD83 Zone 14**  
**Codington County**

Receptor ID	Participation Status	Easting (m)	Northing (m)	Elevation AMSL (m)	Real Case Sound (dB(A))	7/9/19 Appendix I Report Results	Distance to Nearest Turbine (ft)
CR2-C98-NP	Non-P	660,155	4,976,007	582.8	45.0	44.9	1,749
CR2-C97-NP	Non-P	660,093	4,976,001	583.8	44.9	44.9	1,814
CR2-C61-NP	Non-P	660,630	4,976,840	582.5	44.1	44.6	1,667
CR1-C9-NP	Non-P	665,352	4,985,004	609.0	43.8	45.0	2,280
CR1-C31-NP	Non-P	665,939	4,988,950	585.4	43.2	39.6	2,126
CR2-C62-NP	Non-P	666,992	4,977,048	615.0	43.0	44.0	1,860
CR2-C38-NP	Non-P	660,874	4,966,929	585.5	42.9	44.7	1,906
CR2-C48-NP	Non-P	662,370	4,965,588	590.3	42.9	44.8	2,172
CR1-C13-NP	Non-P	663,792	4,985,785	612.0	42.6	44.0	2,589
CR1-C74-NP	Non-P	662,869	4,983,122	595.7	42.6	44.3	2,480
CR1-C16-NP	Non-P	661,960	4,986,288	606.0	42.2	42.9	2,648
CR2-C132-NP	Non-P	666,857	4,985,021	588.2	42.3	44.0	1,883
CR2-C2-NP	Non-P	662,238	4,980,604	590.9	42.3	42.9	1,880
CR1-C12-NP	Non-P	662,222	4,985,736	603.0	42.1	43.8	2,201
CR2-C65-NP	Non-P	665,217	4,977,746	609.0	42.0	44.4	2,139
CR2-C1-NP	Non-P	662,198	4,980,622	591.0	42.2	42.9	1,909
CR1-C12-1-NP	Non-P	662,199	4,986,047	606.0	41.8	43.0	2,818
CR2-C131-NP	Non-P	666,732	4,984,987	591.0	41.5	43.1	2,287
CR1-C28-NP	Non-P	665,429	4,988,598	590.9	41.4	40.2	2,831
CR2-C79-NP	Non-P	666,869	4,984,663	587.9	41.3	43.0	2,703
CR1-C71-NP	Non-P	665,137	4,988,378	595.6	41.1	40.9	3,448
CR1-C15-NP	Non-P	663,291	4,986,026	615.0	41.1	43.3	3,907
CR1-C29-NP	Non-P	666,572	4,988,867	575.9	41.1	38.7	2,457
CR1-C79-NP	Non-P	660,452	4,983,750	595.9	41.2	42.7	2,037
CR1-C70-NP	Non-P	665,135	4,988,293	595.9	40.9	41.0	3,540
CR1-C75-NP	Non-P	663,010	4,982,658	588.0	41.0	42.5	3,730
CR1-C73-NP	Non-P	663,066	4,982,530	591.0	40.8	42.3	3,704
CR1-C76-NP	Non-P	662,981	4,982,580	588.3	40.8	42.3	3,901
CR1-C72-NP	Non-P	665,158	4,988,170	594.6	40.7	41.1	3,776
CR2-C115-NP	Non-P	663,555	4,980,564	575.2	40.8	42.2	2,520
CR2-C54-NP	Non-P	662,636	4,976,079	597.0	40.7	41.9	2,287
CR1-C87-NP	Non-P	662,628	4,982,425	585.4	40.5	41.9	4,258
CR2-C47-NP	Non-P	662,200	4,975,837	594.5	40.4	40.7	2,821
CR2-C39-NP	Non-P	664,089	4,966,486	566.2	40.3	41.1	2,178
CR2-C102-NP	Non-P	662,025	4,976,085	594.1	40.1	40.3	3,609
CR2-C103-NP	Non-P	662,046	4,976,067	594.8	40.1	40.3	3,547
CR1-C7-NP	Non-P	660,893	4,984,861	593.2	40.0	41.2	3,022
CR2-C105-NP	Non-P	662,122	4,976,029	595.3	40.0	40.3	3,425
CR2-C36-NP	Non-P	660,475	4,974,426	578.6	39.9	40.2	2,992

\* Not included in original submittal

Table C-3: Crowned Ridge II 200 MW Sound Level Tabular Results Sorted by Sound Level

Realistic case sound results 25 ft from occupied structures perimeter

Results using GE 2.3-116-90 m HH, GE 2.1-116-80 m HH WTG's

UTM NAD83 Zone 14

Codington County

*continued*

Receptor ID	Participation Status	Easting (m)	Northing (m)	Elevation AMSL (m)	Real Case Sound (dB(A))	7/9/19 Appendix I Report Results	Distance to Nearest Turbine (ft)
CR2-C53-NP	Non-P	662,401	4,964,782	582.0	39.9	41.7	2,257
CR2-C46-NP	Non-P	660,435	4,965,627	582.0	39.6	41.5	2,569
CR2-C117-NP	Non-P	664,742	4,976,142	594.2	39.4	41.0	3,481
CR2-C71-NP	Non-P	665,411	4,970,503	586.1	39.5	41.5	2,529
CR2-C134-NP	Non-P	667,097	4,973,011	613.0	39.4	40.9	3,363
CR2-C116-NP	Non-P	664,640	4,976,142	591.1	39.2	40.8	3,533
CR2-C10-NP	Non-P	665,189	4,966,505	570.0	39.1	39.8	2,438
CR1-C24-NP	Non-P	660,176	4,983,887	601.1	38.8	40.0	3,038
CR2-C16-NP	Non-P	665,418	4,966,866	567.0	38.8	39.7	2,756
CR2-C40-NP	Non-P	659,189	4,974,765	578.3	38.6	38.7	2,841
CR1-C67-NP	Non-P	659,789	4,985,057	606.0	38.4	38.8	5,791
CR1-C81-NP	Non-P	660,062	4,983,083	597.0	38.5	39.8	3,094
CR2-C42-NP	Non-P	664,887	4,975,388	597.0	38.4	39.8	3,566
CR1-C66-NP	Non-P	659,718	4,985,032	606.0	38.3	38.7	5,800
CR2-C49-NP	Non-P	660,907	4,964,846	582.0	38.4	40.2	3,271
CR1-C5-NP	Non-P	659,958	4,984,794	604.8	38.1	38.7	5,659
CR2-C75-NP	Non-P	664,866	4,969,808	583.7	38.1	39.8	4,396
CR2-C76-NP	Non-P	664,747	4,969,738	584.8	37.9	39.6	4,560
CR1-C4-NP	Non-P	659,744	4,984,749	606.0	37.8	38.3	5,981
CR2-C43-NP	Non-P	664,382	4,975,544	597.0	37.8	39.1	4,232
CR2-C52-NP	Non-P	662,688	4,964,792	585.9	37.9	39.7	3,054
CR2-C37-NP	Non-P	663,037	4,974,496	606.0	37.5	38.1	3,537
CR2-C135-NP	Non-P	667,172	4,966,196	595.2	37.5	40.1	2,884
CR2-C23-NP	Non-P	664,069	4,969,661	594.0	37.4	38.9	4,439
CR2-C136-NP	Non-P	667,209	4,966,166	595.4	37.5	40.1	2,887
CR2-C77-NP	Non-P	663,865	4,969,694	597.0	37.4	38.7	4,406
CR2-C119-NP	Non-P	665,052	4,974,682	600.0	37.3	38.5	4,760
CR2-C118-NP	Non-P	665,014	4,974,639	600.0	37.1	38.3	4,947
CR2-C55-NP	Non-P	660,765	4,964,777	582.0	37.3	39.1	3,655
CR2-C107-NP	Non-P	662,265	4,978,194	577.7	37.0	38.1	4,564
CR2-C56-NP	Non-P	660,759	4,964,737	582.0	37.0	38.8	3,786
CR2-C58-NP	Non-P	660,764	4,964,686	582.0	36.8	38.6	3,904
CR1-C88-NP	Non-P	660,156	4,980,595	570.9	36.5	37.7	4,045
CR2-C51-NP	Non-P	662,977	4,964,794	584.0	36.5	38.2	3,934
CR2-C69-NP	Non-P	661,701	4,978,792	564.0	36.4	37.3	5,171
CR2-C29-NP	Non-P	661,223	4,968,144	595.2	36.3	37.6	4,639
CR2-C67-NP	Non-P	660,379	4,978,592	556.1	36.2	37.2	5,033
CR1-C80-NP	Non-P	659,351	4,983,174	604.4	36.1	36.8	5,308

\* Not included in original submittal



**Table C-3: Crowned Ridge II 200 MW Sound Level Tabular Results Sorted by Sound Level**

Realistic case sound results 25 ft from occupied structures perimeter

Results using GE 2.3-116-90 m HH, GE 2.1-116-80 m HH WTG's

UTM NAD83 Zone 14

Codington County

continued

Receptor ID	Participation Status	Easting (m)	Northing (m)	Elevation AMSL (m)	Real Case Sound (dB(A))	7/9/19 Appendix I Report Results	Distance to Nearest Turbine (ft)
CR1-C84-NP	Non-P	659,607	4,982,216	594.0	36.1	37.1	5,856
CR1-C85-NP	Non-P	659,706	4,981,419	588.0	36.0	37.1	4,819
CR2-C112-NP	Non-P	665,928	4,972,630	603.0	35.8	37.1	6,575
CR2-C7-NP	Non-P	665,694	4,966,179	570.0	35.6	37.1	4,409
CR2-C35-NP	Non-P	658,964	4,974,334	566.8	35.6	35.7	4,432
CR2-C24-NP	Non-P	661,541	4,969,653	600.0	35.5	36.1	3,809
CR2-C96-NP	Non-P	659,316	4,974,063	570.6	35.5	35.6	4,813
CR2-C72-NP	Non-P	663,856	4,970,488	597.0	35.2	36.4	6,135
CR2-C95-NP	Non-P	659,248	4,974,054	567.0	35.3	35.4	4,898
CR2-C91-NP	Non-P	663,938	4,970,546	597.0	35.2	36.4	6,457
CR2-C92-NP	Non-P	663,855	4,970,535	597.0	35.1	36.3	6,247
CR2-C90-NP	Non-P	664,088	4,970,672	594.0	35.1	36.3	6,863
CR2-C64-NP	Non-P	660,901	4,964,220	582.0	34.8	36.5	4,429
CR2-C80-NP	Non-P	664,705	4,972,092	597.3	34.5	35.6	7,684
CR2-C66-NP	Non-P	662,396	4,963,954	582.0	34.3	36.0	4,429
CR2-C44-NP	Non-P	659,145	4,966,062	561.4	34.3	35.9	4,183
CR2-C109-NP	Non-P	662,699	4,972,874	606.0	34.1	34.7	7,169
CR2-C104-NP	Non-P	662,109	4,972,735	604.0	34.0	34.6	6,608
CR2-C137-NP	Non-P	658,951	4,979,194	568.2	34.0	34.7	6,555
CR2-C106-NP	Non-P	662,165	4,972,711	604.7	33.9	34.5	6,749
CR2-C22-NP	Non-P	661,202	4,972,711	597.0	33.8	34.3	6,247
CR2-C101-NP	Non-P	660,732	4,972,807	591.0	33.7	34.2	6,266
CR2-C86-NP	Non-P	662,880	4,971,302	603.0	33.6	34.3	7,208
CR2-C87-NP	Non-P	662,841	4,971,294	603.0	33.5	34.3	7,165
CR2-C89-NP	Non-P	662,244	4,971,076	603.0	33.4	34.1	6,489
CR2-C100-NP	Non-P	660,592	4,972,602	591.0	33.2	33.6	7,057
CR2-C151-NP	Non-P	663,934	4,964,475	556.1	33.1	34.6	6,929
CR2-C3-NP	Non-P	664,345	4,964,571	556.0	32.7	34.3	7,497
CR2-C93-NP	Non-P	659,203	4,973,158	584.9	32.8	33.0	7,792
CR2-C155-NP	Non-P	657,554	4,975,128	554.6	32.7	#N/A	7,034
CR2-C30-NP	Non-P	659,100	4,968,023	568.6	32.5	33.8	5,502
CR2-C74-NP	Non-P	660,687	4,969,931	586.5	32.6	33.2	6,732
CR2-C94-NP	Non-P	659,202	4,973,052	583.9	32.6	32.8	8,133
CR2-C143-NP	Non-P	657,016	4,977,505	553.6	32.0	32.6	7,444
CR2-C68-NP	Non-P	662,517	4,963,408	579.0	31.9	33.4	6,237
CR2-C142-NP	Non-P	656,697	4,977,269	566.9	31.4	31.8	8,432
CR2-C41-P	Participant	660,770	4,975,147	596.4	45.6	43.7	1,532
CR2-C78-P	Participant	665,273	4,983,933	609.0	45.4	47.0	1,919

\* Not included in original submittal

**Table C-3: Crowned Ridge II 200 MW Sound Level Tabular Results Sorted by Sound Level**

Realistic case sound results 25 ft from occupied structures perimeter

Results using GE 2.3-116-90 m HH, GE 2.1-116-80 m HH WTG's

UTM NAD83 Zone 14

Codington County

continued

Receptor ID	Participation Status	Easting (m)	Northing (m)	Elevation AMSL (m)	Real Case Sound (dB(A))	7/9/19 Appendix I Report Results	Distance to Nearest Turbine (ft)
CR1-C68-P	Participant	662,652	4,987,606	609.0	45.1	45.2	2,146
CR1-C69-P	Participant	662,685	4,987,619	609.0	45.1	45.1	2,185
CR2-C50-P	Participant	661,252	4,976,035	597.0	44.8	43.6	1,696
CR1-C11-P	Participant	664,111	4,985,679	609.0	44.6	45.3	1,860
CR1-C20-P	Participant	663,054	4,987,455	606.0	43.8	44.0	2,336
CR1-C77-P	Participant	661,915	4,983,367	591.0	43.7	45.4	1,654
CR1-C10-P	Participant	663,510	4,985,195	609.0	43.3	45.9	2,346
CR2-C59-P	Participant	664,952	4,976,698	601.9	43.1	44.8	1,654
CR2-C57-P	Participant	666,667	4,976,162	613.8	42.4	43.6	2,362
CR2-C27-P	Participant	662,985	4,968,167	582.0	42.5	44.1	1,726
CR1-C89-P	Participant	662,062	4,982,029	584.3	42.1	43.6	2,165
CR2-C63-P	Participant	665,528	4,977,285	612.0	42.1	44.0	2,185
CR1-C18-P	Participant	663,651	4,987,157	610.4	41.9	42.6	3,409
CR1-C86-P	Participant	662,086	4,982,135	585.0	41.8	43.3	2,306
CR2-C26-P	Participant	664,733	4,968,915	591.0	41.9	43.6	1,959
CR2-C154-P	Participant	660,684	4,967,166	588.0	41.6	43.4	2,041
CR2-C133-P	Participant	666,992	4,967,681	571.2	40.8	43.1	3,002
CR2-C34-P	Participant	663,934	4,966,991	570.1	40.9	41.6	2,133
CR1-C21-P	Participant	660,756	4,984,086	594.0	40.6	42.0	2,388
CR1-C22-P	Participant	660,755	4,984,082	594.0	40.6	42.0	2,375
CR2-C33-P	Participant	663,878	4,967,612	576.1	40.5	41.9	2,999
CR2-C70-P	Participant	665,521	4,970,518	588.9	40.4	42.5	2,215
CR1-C23-P	Participant	660,619	4,984,078	595.8	40.2	41.5	2,523
CR1-C78-P	Participant	660,190	4,983,788	602.3	39.1	40.4	2,835
CR1-C25-P	Participant	660,190	4,983,788	602.3	39.1	40.4	2,838
CR1-C8-P	Participant	660,532	4,984,445	599.4	38.9	40.0	3,740
CR2-C60-P	Participant	662,287	4,976,800	594.0	39.0	39.9	3,793
CR2-C129-P	Participant	666,716	4,966,751	591.0	37.6	39.9	3,356
CR2-C130-P	Participant	666,727	4,966,695	591.0	37.5	39.8	3,350
CR2-C128-P	Participant	666,636	4,966,649	589.0	37.1	39.3	3,671
CR2-C45-P	Participant	664,058	4,965,862	570.0	37.0	38.3	3,907
CR2-C126-P	Participant	666,389	4,966,670	585.0	36.6	38.6	4,455
CR2-C123-P	Participant	666,146	4,966,653	579.4	36.4	38.2	5,216
CR2-C31-P	Participant	663,117	4,972,923	606.0	34.1	34.7	7,579
CR2-C32-P	Participant	659,469	4,967,984	575.2	33.7	35.1	4,678
CR2-C99-P	Participant	660,584	4,972,570	591.0	33.1	33.5	7,165
CR2-C28-P	Participant	659,208	4,968,159	572.8	32.5	33.7	5,630

\* Not included in original submittal

**Table C-3: Crowned Ridge II 200 MW Sound Level Tabular Results Sorted by Sound Level**

Realistic case sound results 25 ft from occupied structures perimeter

Results using GE 2.3-116-90 m HH, GE 2.1-116-80 m HH WTG's

UTM NAD83 Zone 14

Deuel County

continued

Receptor ID	Participation Status	Easting (m)	Northing (m)	Elevation AMSL (m)	Real Case Sound (dB(A))	7/9/19 Appendix I Report Results	Distance to Nearest Turbine (ft)
CR2-D85-NP	Non-P	669,593	4,976,302	603.0	44.1	44.8	1,949
CR2-D21-NP	Non-P	669,517	4,978,053	596.1	43.7	44.8	1,985
CR2-D221-NP	Non-P	670,351	4,973,543	606.0	42.6	43.3	2,041
CR2-D14-NP	Non-P	670,351	4,973,543	606.0	42.6	43.3	2,041
CR2-D11-NP	Non-P	669,646	4,974,534	604.4	42.5	40.8	1,919
CR2-D71-NP	Non-P	669,402	4,979,216	588.0	42.4	43.2	1,975
CR2-D30-NP	Non-P	669,549	4,974,233	611.9	42.1	40.8	2,044
CR2-D12-NP	Non-P	668,558	4,969,840	604.7	42.0	44.1	2,051
CR2-D18-NP	Non-P	671,540	4,976,154	582.0	41.8	43.3	2,201
CR2-D132-NP	Non-P	669,497	4,974,128	609.0	41.6	40.9	2,264
CR2-D79-NP	Non-P	672,172	4,974,737	585.0	41.5	43.2	1,955
CR2-D62-NP	Non-P	669,355	4,974,624	609.0	40.9	41.1	2,913
CR2-D91-NP	Non-P	667,546	4,976,173	618.0	40.0	41.4	4,203
CR2-D127-NP	Non-P	668,841	4,969,858	603.0	40.0	42.3	2,894
CR2-D99-NP	Non-P	668,148	4,976,230	608.8	39.8	41.1	4,331
CR2-D48-NP	Non-P	668,923	4,972,998	609.0	40.0	41.5	2,680
CR2-D45-NP	Non-P	668,018	4,976,064	611.5	39.7	41.0	4,393
CR2-D74-NP	Non-P	668,130	4,976,068	609.2	39.7	41.0	4,505
CR2-D128-NP	Non-P	668,625	4,967,652	588.0	39.6	43.3	2,779
CR2-D129-NP	Non-P	669,645	4,973,005	606.0	38.2	39.4	4,511
CR2-D112-NP	Non-P	667,666	4,971,554	604.6	37.8	40.1	3,553
CR2-D113-NP	Non-P	667,774	4,971,544	606.9	37.8	40.0	3,537
CR2-D189-NP	Non-P	667,228	4,971,527	606.0	37.7	40.2	3,757
CR2-D213-NP	Non-P	667,178	4,971,525	606.0	37.7	40.2	3,816
CR2-D133-NP	Non-P	669,661	4,980,356	576.0	37.5	38.7	4,035
CR2-D97-NP	Non-P	667,164	4,972,232	600.0	37.1	38.8	5,371
CR2-D52-NP	Non-P	667,172	4,971,776	606.0	37.1	39.3	4,583
CR2-D23-NP	Non-P	669,671	4,980,468	573.0	37.1	38.4	4,380
CR2-D84-NP	Non-P	667,159	4,972,169	598.2	37.0	38.8	5,535
CR2-D100-NP	Non-P	668,589	4,972,064	609.9	37.0	38.7	4,708
CR2-D9-NP	Non-P	668,597	4,971,999	611.5	36.9	38.6	4,921
CR2-D130-NP	Non-P	672,080	4,973,212	591.0	36.8	42.1	3,776
CR2-D222-NP	Non-P	672,081	4,973,212	591.0	36.8	42.1	3,779
CR2-D220-NP	Non-P	670,260	4,967,728	597.0	36.6	43.7	4,042
CR2-D110-NP	Non-P	670,260	4,967,728	597.0	36.6	43.7	4,042
CR2-D75-NP	Non-P	669,473	4,981,625	570.0	35.7	37.2	7,319
CR2-D82-NP	Non-P	669,855	4,970,718	603.0	35.7	38.3	5,935
CR2-D126-NP	Non-P	670,227	4,967,455	593.3	35.4	42.6	4,934

\* Not included in original submittal

Table C-3: Crowned Ridge II 200 MW Sound Level Tabular Results Sorted by Sound Level

Realistic case sound results 25 ft from occupied structures perimeter

Results using GE 2.3-116-90 m HH, GE 2.1-116-80 m HH WTG's

UTM NAD83 Zone 14

Deuel County

continued

Receptor ID	Participation Status	Easting (m)	Northing (m)	Elevation AMSL (m)	Real Case Sound (dB(A))	7/9/19 Appendix I Report Results	Distance to Nearest Turbine (ft)
CR2-D223-NP	Non-P	670,227	4,967,455	593.3	35.4	42.6	4,934
CR2-D92-NP	Non-P	671,159	4,971,610	597.2	34.3	38.4	6,319
CR2-D46-NP	Non-P	669,797	4,966,804	591.0	34.0	41.9	6,778
CR2-D224-NP	Non-P	669,887	4,966,846	590.6	33.9	#N/A	6,795
CR2-D36-NP	Non-P	669,812	4,966,746	591.0	33.8	42.0	6,837
CR2-D17-NP	Non-P	672,023	4,969,597	597.0	33.6	41.5	5,167
CR2-D72-NP	Non-P	671,925	4,970,149	603.0	33.3	39.2	5,938
CR2-D95-NP	Non-P	671,994	4,971,562	600.0	33.4	38.0	7,264
CR2-D106-NP	Non-P	667,315	4,965,297	594.0	33.3	36.8	5,351
CR2-D73-NP	Non-P	672,072	4,971,556	600.0	33.3	37.9	7,405
CR2-D37-NP	Non-P	674,048	4,974,071	573.0	33.1	34.8	6,542
CR2-D125-NP	Non-P	670,404	4,966,786	597.0	33.0	41.8	7,001
CR2-D65-NP	Non-P	670,422	4,966,654	597.0	32.7	41.8	7,424
CR2-D116-NP	Non-P	673,491	4,972,398	577.8	32.4	35.5	9,055
CR2-D96-NP	Non-P	672,899	4,971,469	594.0	32.3	36.4	9,249
CR2-D41-NP	Non-P	670,437	4,966,409	597.0	32.2	42.2	8,225
CR2-D107-NP	Non-P	670,405	4,966,321	597.0	32.0	42.5	8,520
CR2-D108-NP	Non-P	670,354	4,965,949	594.0	31.5	44.3	9,121
CR2-D44-NP	Non-P	670,434	4,965,956	593.8	31.4	44.4	9,363
CR2-D5-NP	Non-P	668,781	4,964,897	603.0	31.3	39.8	7,342
CR2-D190-NP	Non-P	675,131	4,970,954	573.0	30.5	36.9	16,043
CR2-D77-NP	Non-P	672,044	4,966,468	600.0	30.4	43.7	9,298
CR2-D54-NP	Non-P	672,012	4,966,477	600.0	30.4	43.6	9,219
CR2-D51-NP	Non-P	675,005	4,970,131	577.8	30.2	40.9	14,977
CR2-D19-NP	Non-P	668,870	4,964,178	606.0	29.9	42.4	9,600
CR2-D15-NP	Non-P	674,387	4,968,515	588.0	29.8	43.3	12,474
CR2-D20-NP	Non-P	675,261	4,968,400	579.0	29.4	44.0	15,364
CR2-D22-NP	Non-P	668,798	4,963,767	603.1	29.3	41.7	10,777
CR2-D86-NP	Non-P	673,842	4,966,875	597.0	29.2	43.9	12,542
CR2-D121-NP	Non-P	674,461	4,966,734	594.0	28.9	44.2	14,524
CR2-D105-NP	Non-P	670,348	4,963,826	611.7	28.6	42.9	13,179
CR2-D83-NP	Non-P	675,891	4,966,810	579.0	28.6	44.2	18,658
CR2-D109-NP	Non-P	676,885	4,965,806	576.0	28.2	38.2	22,979
CR2-D120-NP	Non-P	673,401	4,964,165	609.0	27.7	41.5	18,067
CR2-D3-NP	Non-P	672,390	4,963,482	612.0	27.5	44.8	18,746
CR2-D90-NP	Non-P	670,516	4,962,327	612.0	27.1	40.7	17,493
CR2-D206-NP	Non-P	676,828	4,963,231	588.0	27.1	34.5	27,637
CR2-D207-NP	Non-P	676,828	4,963,280	588.0	27.1	34.6	27,529

\* Not included in original submittal

**Table C-3: Crowned Ridge II 200 MW Sound Level Tabular Results Sorted by Sound Level**  
**Realistic case sound results 25 ft from occupied structures perimeter**  
**Results using GE 2.3-116-90 m HH, GE 2.1-116-80 m HH WTG's**  
**UTM NAD83 Zone 14**  
**Deuel County**  
**continued**

<b>Receptor ID</b>	<b>Participation Status</b>	<b>Easting (m)</b>	<b>Northing (m)</b>	<b>Elevation AMSL (m)</b>	<b>Real Case Sound (dB(A))</b>	<b>7/9/19 Appendix I Report Results</b>	<b>Distance to Nearest Turbine (ft)</b>
CR2-D104-NP	Non-P	670,443	4,961,600	613.8	26.6	37.7	19,455
CR2-D101-NP	Non-P	672,538	4,961,910	612.8	26.4	41.3	22,667
CR2-D63-NP	Non-P	670,546	4,961,419	615.0	26.4	37.4	20,138
CR2-D103-NP	Non-P	670,588	4,961,119	615.0	26.2	36.2	21,079
CR2-D205-NP	Non-P	670,455	4,960,601	611.6	25.8	34.0	22,437
CR2-D180-NP	Non-P	671,823	4,960,368	615.0	25.6	34.2	25,213
CR2-D154-NP	Non-P	672,205	4,960,261	610.8	25.5	33.7	26,194
CR2-D53-P	Participant	670,392	4,975,925	592.8	45.8	47.0	1,801
CR2-D212-P	Participant	667,211	4,969,816	608.3	44.5	47.4	1,686
CR2-D131-P	Participant	669,471	4,977,139	597.5	44.3	45.6	2,087
CR2-D39-P	Participant	668,443	4,974,627	614.4	44.1	45.8	1,706
CR2-D56-P	Participant	667,119	4,977,925	612.0	44.1	46.0	2,110
CR2-D38-P	Participant	667,108	4,982,083	597.0	44.1	47.0	1,693
CR2-D64-P	Participant	669,417	4,978,434	588.0	42.7	43.8	2,425
CR2-D6-P	Participant	668,762	4,967,671	591.0	39.3	43.2	2,844
CR2-D49-P	Participant	672,024	4,974,135	583.2	38.8	40.8	3,537
CR2-D98-P	Participant	669,757	4,972,426	606.0	36.6	38.3	5,381
CR2-D115-P	Participant	670,974	4,969,938	606.0	36.4	41.1	3,583
CR2-D192-P	Participant	669,283	4,971,621	607.2	35.8	37.8	6,499
CR2-D111-P	Participant	671,876	4,969,006	600.0	34.6	44.5	4,180
CR2-D124-P	Participant	671,911	4,967,745	603.0	32.6	43.8	5,738
CR2-D50-P	Participant	672,015	4,967,209	602.8	31.5	44.7	7,247
CR2-D16-P	Participant	671,626	4,966,693	601.7	31.2	44.2	8,005
CR2-D122-P	Participant	673,601	4,967,341	594.0	29.7	44.6	11,092
CR2-D123-P	Participant	673,527	4,967,015	596.7	29.5	43.5	11,424
CR2-D119-P	Participant	673,378	4,965,126	602.6	28.3	45.1	15,390
CR2-D208-P	Participant	676,741	4,964,971	579.0	27.8	39.5	23,920
CR2-D176-P	Participant	673,641	4,962,583	609.0	26.7	38.7	23,021

\* Not included in original submittal





www.eapc.net | 701.775.3000

**Crowned Ridge II Wind Farm  
200 MW  
Sound Overview Map**

*Client*  
SWCA Environmental Consultants

*Project Description*  
Wind turbine layout with occupied structures and Codington County parcel boundaries within 2 km.  
  
Predicted sound pressure levels at existing residences and Codington County land parcel boundaries.  
  
Additional 2 dBA added.

*Location:* Watertown, SD  
*Project #:* 20174431

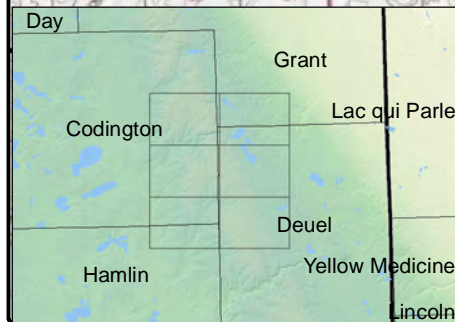
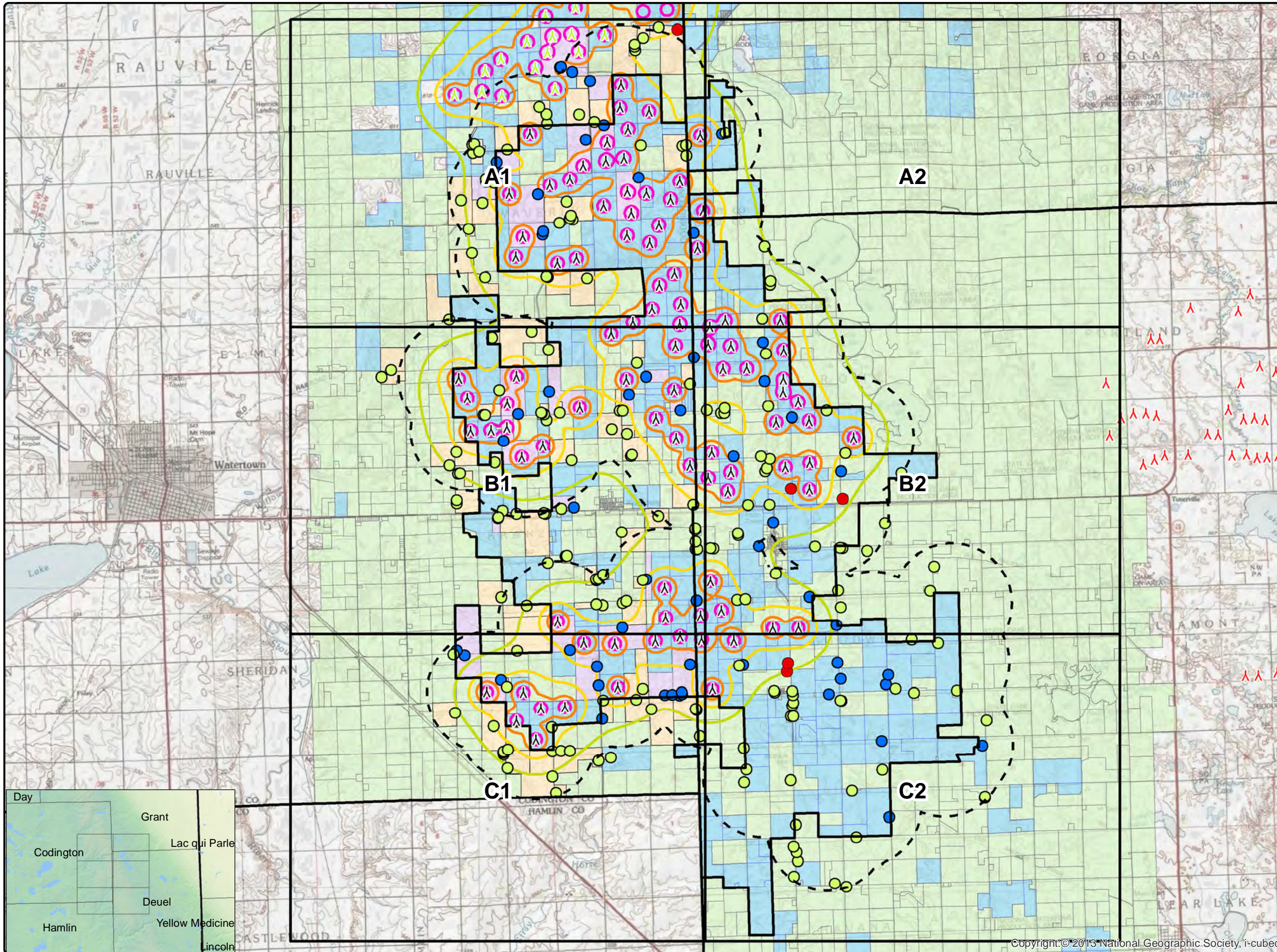
*Issue Dates*

#	Description	Date
1	Original	2019.09.18

*Drawn By:* AS      *Checked By:* JH

- Legend**
- ▲ Crowned Ridge II Turbines
  - ▲ Crowned Ridge Turbines
  - ▲ Deuel Harvest Turbines
  - - - 2 km Turbine Buffer
  - ▭ County Lines
  - ▭ CR II Project Boundary
  - CR2 Intervenor
  - Non-Participants Noise
  - Participants Noise
- Sound Pressure (dBA)**
- 30
  - 35
  - 40
  - 45
  - 50
- ▭ Non-Participating Codington Parcels
  - ▭ Participating Codington\_Parcels
  - ▭ Non-Participating Parcels
  - ▭ Participating Parcels

**COPYRIGHT:**  
All maps, plans, specifications, computer files, field data, notes and other documents and instruments prepared by EAPC as instruments of service shall remain the property of EAPC. EAPC shall retain all common law, statutory and other reserved rights, including the copyright thereto.



0 0.75 1.5 3 Mile

Neither EAPC nor any person acting on their behalf: (a) makes any warranty, express or implied, with respect to the use of any information disclosed on this drawing; or (b) assumes any liability with respect to the use of any information or methods disclosed on this drawing. Any recipient of this document, by their acceptance or use of this document, releases EAPC, its parent corporations and its affiliates, from any liability for direct, indirect, consequential, or special loss or damage whether arising in contract, warranty, express or implied, tort or otherwise, and irrespective of fault, negligence, and strict liability. The responsibilities for the applications and use of the material contained in this document remain solely with the client.



www.eapc.net | 701.775.3000

**Crowned Ridge II Wind Farm  
200 MW  
Sound Iso-Lines**

*Client*  
SWCA Environmental Consultants

*Project Description*  
Wind turbine layout with occupied structures and Codington County parcel boundaries within 2 km.

Predicted sound pressure levels at existing residences and Codington County land parcel boundaries.

Additional 2 dBA added.

*Location:* Watertown, SD  
*Project #:* 20174431

*Issue Dates*

#	Description	Date
1	Original	2019.09.18

Drawn By: AS      Checked By: JH

**Legend**

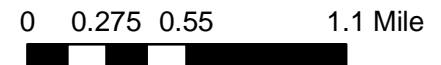
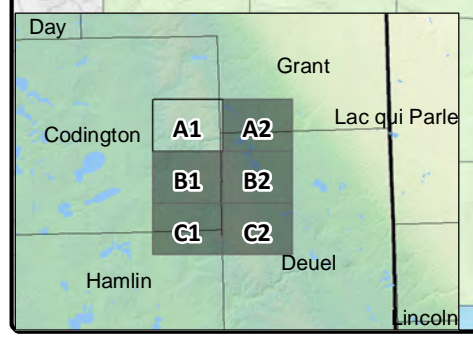
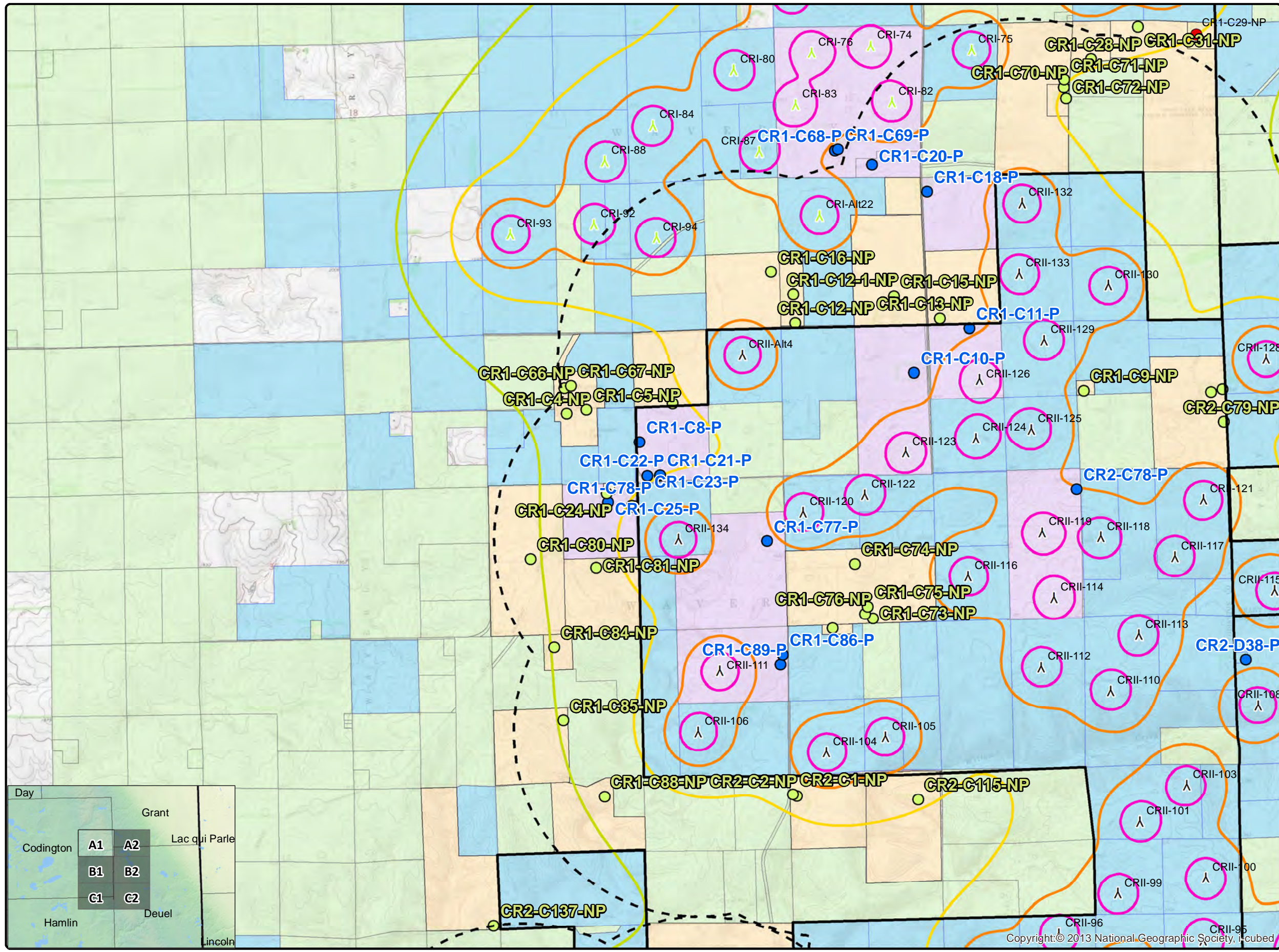
- ▲ Crowned Ridge II Turbines
- ▲ Crowned Ridge Turbines
- ▲ Deuel Harvest Turbines
- 2 km Turbine Buffer
- County Lines
- CR II Project Boundary
- CR2 Intervenor
- Non-Participants Noise
- Participants Noise

**Sound Pressure (dBA)**

- 30
- 35
- 40
- 45
- 50

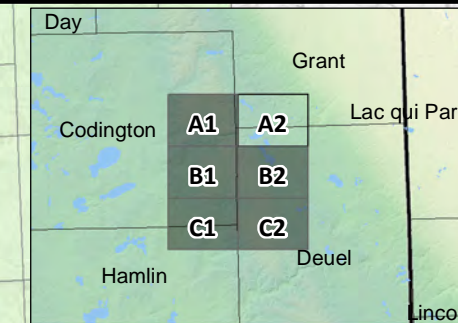
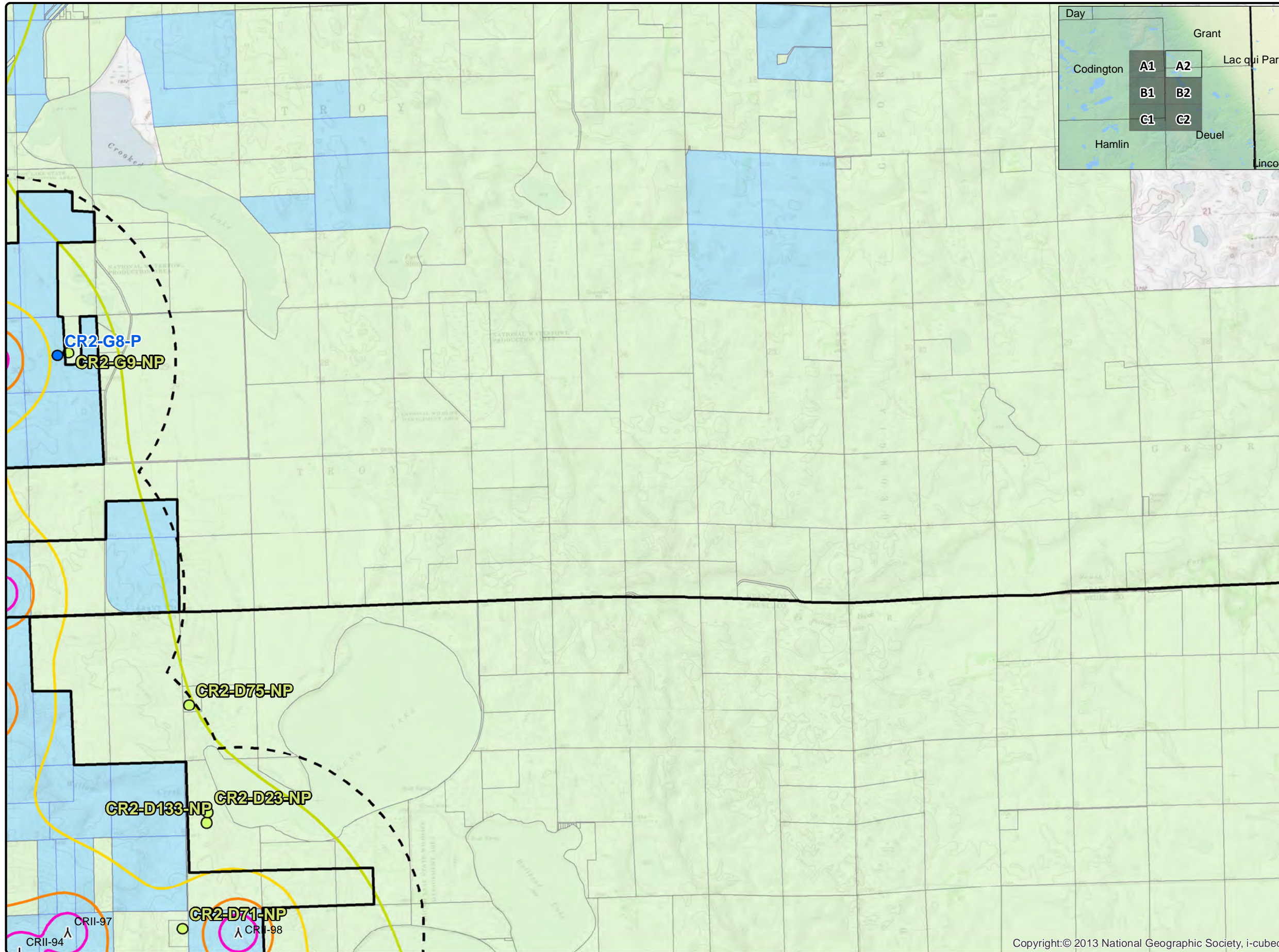
- Non-Participating Codington Parcels
- Participating Codington\_Parcels
- Non-Participating Parcels
- Participating Parcels

COPYRIGHT:  
All maps, plans, specifications, computer files, field data, notes and other documents and instruments prepared by EAPC as instruments of service shall remain the property of EAPC. EAPC shall retain all common law, statutory and other reserved rights, including the copyright thereto.



Neither EAPC nor any person acting on their behalf: (a) makes any warranty, express or implied, with respect to the use of any information disclosed on this drawing; or (b) assumes any liability with respect to the use of any information or methods disclosed on this drawing. Any recipient of this document, by their acceptance or use of this document, releases EAPC, its parent corporations and its affiliates, from any liability for direct, indirect, consequential, or special loss or damage whether arising in contract, warranty, express or implied, tort or otherwise, and irrespective of fault, negligence, and strict liability. The responsibilities for the applications and use of the material contained in this document remain solely with the client.






**EAPC**  
WIND ENERGY

www.eapc.net | 701.775.3000

**Crowned Ridge II Wind Farm  
200 MW  
Sound Iso-Lines**

*Client*  
SWCA Environmental Consultants

*Project Description*  
Wind turbine layout with occupied structures and Codington County parcel boundaries within 2 km.  
Predicted sound pressure levels at existing residences and Codington County land parcel boundaries.  
Additional 2 dBA added.

*Location: Watertown, SD*  
*Project #: 20174431*

*Issue Dates*

#	Description	Date
1	Original	2019.09.18

*Issue Dates*

#	Description	Date
1	Original	2019.09.18

*Issue Dates*

#	Description	Date
1	Original	2019.09.18

Drawn By: AS      Checked By: JH

**Legend**


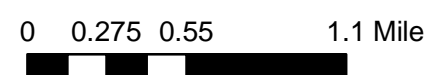
- ▲ Crowned Ridge II Turbines
- ▲ Crowned Ridge Turbines
- ▲ Deuel Harvest Turbines
- - - 2 km Turbine Buffer
- ▭ County Lines
- ▭ CR II Project Boundary
- CR2 Intervenor
- Non-Participants Noise
- Participants Noise

**Sound Pressure (dBA)**

- 30
- 35
- 40
- 45
- 50

- ▭ Non-Participating Codington Parcels
- ▭ Participating Codington\_Parcels
- ▭ Non-Participating Parcels
- ▭ Participating Parcels

**COPYRIGHT:**  
All maps, plans, specifications, computer files, field data, notes and other documents and instruments prepared by EAPC as instruments of service shall remain the property of EAPC. EAPC shall retain all common law, statutory and other reserved rights, including the copyright thereto.

Neither EAPC nor any person acting on their behalf: (a) makes any warranty, express or implied, with respect to the use of any information disclosed on this drawing; or (b) assumes any liability with respect to the use of any information or methods disclosed on this drawing. Any recipient of this document, by their acceptance or use of this document, releases EAPC, its parent corporations and its affiliates, from any liability for direct, indirect, consequential, or special loss or damage whether arising in contract, warranty, express or implied, tort or otherwise, and irrespective of fault, negligence, and strict liability. The responsibilities for the applications and use of the material contained in this document remain solely with the client.



www.eapc.net | 701.775.3000

**Crowned Ridge II Wind Farm  
200 MW  
Sound Iso-Lines**

*Client*  
SWCA Environmental Consultants

*Project Description*  
Wind turbine layout with occupied structures and Codington County parcel boundaries within 2 km.

Predicted sound pressure levels at existing residences and Codington County land parcel boundaries.  
Additional 2 dBA added.

*Location:* Watertown, SD  
*Project #:* 20174431

*Issue Dates*

#	Description	Date
1	Original	2019.09.18

Drawn By: AS      Checked By: JH

**Legend**

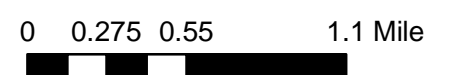
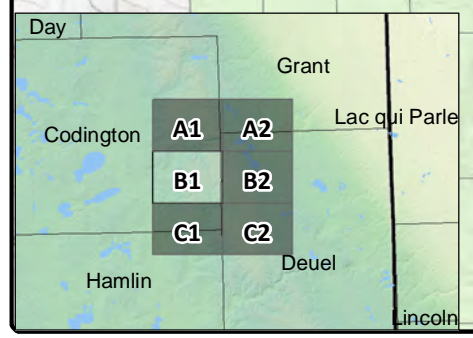
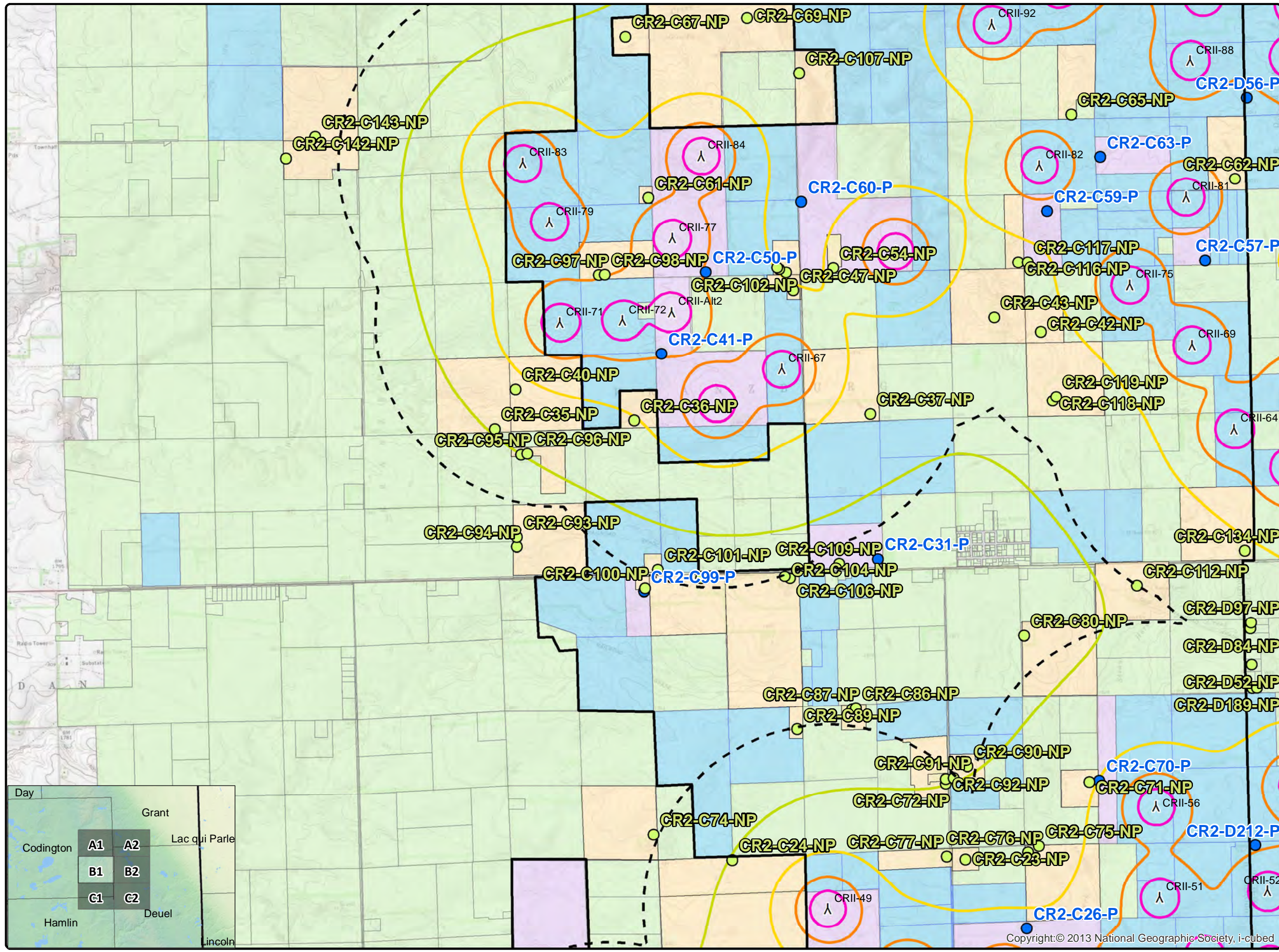
- ▲ Crowned Ridge II Turbines
- ▲ Crowned Ridge Turbines
- ▲ Deuel Harvest Turbines
- - - 2 km Turbine Buffer
- ▭ County Lines
- ▭ CR II Project Boundary
- CR2 Intervenor
- Non-Participants Noise
- Participants Noise

**Sound Pressure (dBA)**

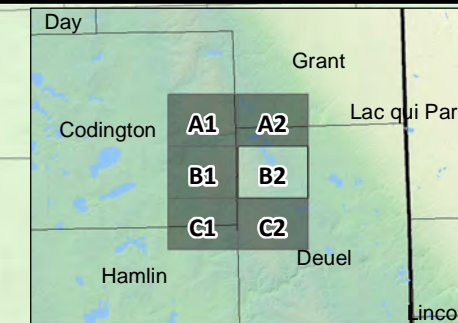
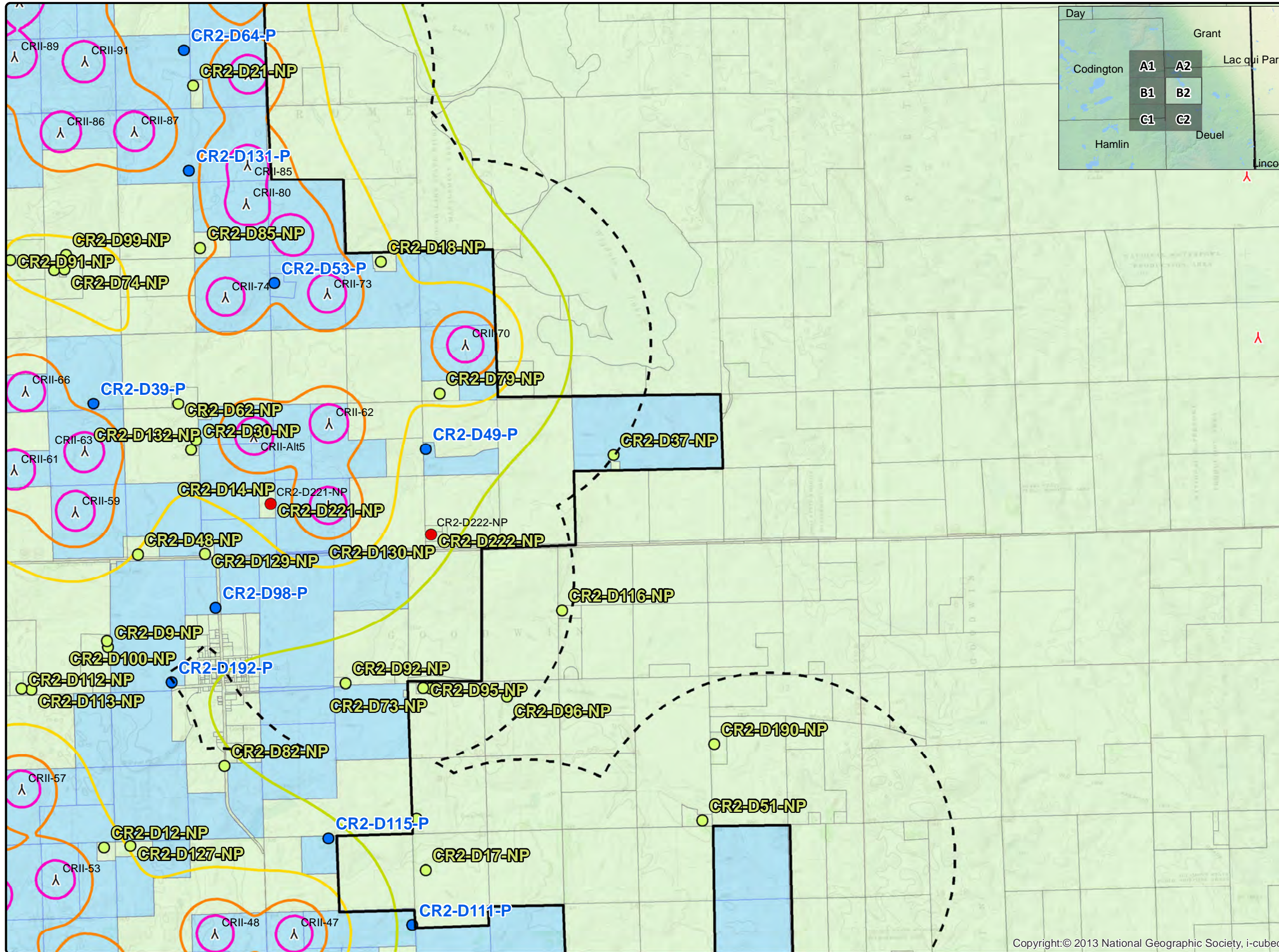
- 30
- 35
- 40
- 45
- 50

- ▭ Non-Participating Codington Parcels
- ▭ Participating Codington\_Parcels
- ▭ Non-Participating Parcels
- ▭ Participating Parcels

COPYRIGHT:  
All maps, plans, specifications, computer files, field data, notes and other documents and instruments prepared by EAPC as instruments of service shall remain the property of EAPC. EAPC shall retain all common law, statutory and other reserved rights, including the copyright thereto.



Neither EAPC nor any person acting on their behalf: (a) makes any warranty, express or implied, with respect to the use of any information disclosed on this drawing; or (b) assumes any liability with respect to the use of any information or methods disclosed on this drawing. Any recipient of this document, by their acceptance or use of this document, releases EAPC, its parent corporations and its affiliates, from any liability for direct, indirect, consequential, or special loss or damage whether arising in contract, warranty, express or implied, tort or otherwise, and irrespective of fault, negligence, and strict liability. The responsibilities for the applications and use of the material contained in this document remain solely with the client.



www.eapc.net | 701.775.3000

**Crowned Ridge II Wind Farm  
200 MW  
Sound Iso-Lines**

*Client*  
SWCA Environmental Consultants

*Project Description*  
Wind turbine layout with occupied structures and Codrington County parcel boundaries within 2 km.

Predicted sound pressure levels at existing residences and Codrington County land parcel boundaries.

Additional 2 dBA added.

*Location:* Watertown, SD  
*Project #:* 20174431

*Issue Dates*

#	Description	Date
1	Original	2019.09.18

Drawn By: AS      Checked By: JH

**Legend**

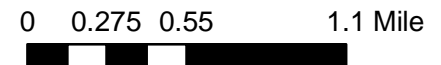
- ▲ Crowned Ridge II Turbines
- ▲ Crowned Ridge Turbines
- ▲ Deuel Harvest Turbines
- - - 2 km Turbine Buffer
- ▭ County Lines
- ▭ CR II Project Boundary
- CR2 Intervenor
- Non-Participants Noise
- Participants Noise

**Sound Pressure (dBA)**

- 30
- 35
- 40
- 45
- 50

- ▭ Non-Participating Codrington Parcels
- ▭ Participating Codrington\_Parcels
- ▭ Non-Participating Parcels
- ▭ Participating Parcels

COPYRIGHT: All maps, plans, specifications, computer files, field data, notes and other documents and instruments prepared by EAPC as instruments of service shall remain the property of EAPC. EAPC shall retain all common law, statutory and other reserved rights, including the copyright thereto.



Neither EAPC nor any person acting on their behalf: (a) makes any warranty, express or implied, with respect to the use of any information disclosed on this drawing; or (b) assumes any liability with respect to the use of any information or methods disclosed on this drawing. Any recipient of this document, by their acceptance or use of this document, releases EAPC, its parent corporations and its affiliates, from any liability for direct, indirect, consequential, or special loss or damage whether arising in contract, warranty, express or implied, tort or otherwise, and irrespective of fault, negligence, and strict liability. The responsibilities for the applications and use of the material contained in this document remain solely with the client.



www.eapc.net | 701.775.3000

**Crowned Ridge II Wind Farm  
200 MW  
Sound Iso-Lines**

*Client*  
SWCA Environmental Consultants

*Project Description*  
Wind turbine layout with occupied structures and Codington County parcel boundaries within 2 km.  
Predicted sound pressure levels at existing residences and Codington County land parcel boundaries.  
Additional 2 dBA added.

*Location:* Watertown, SD  
*Project #:* 20174431

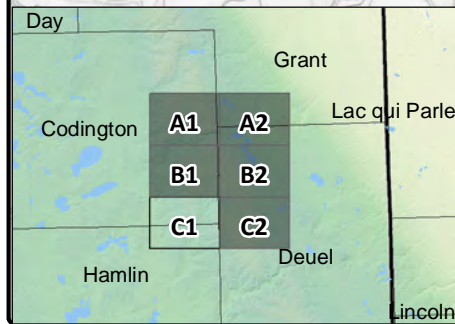
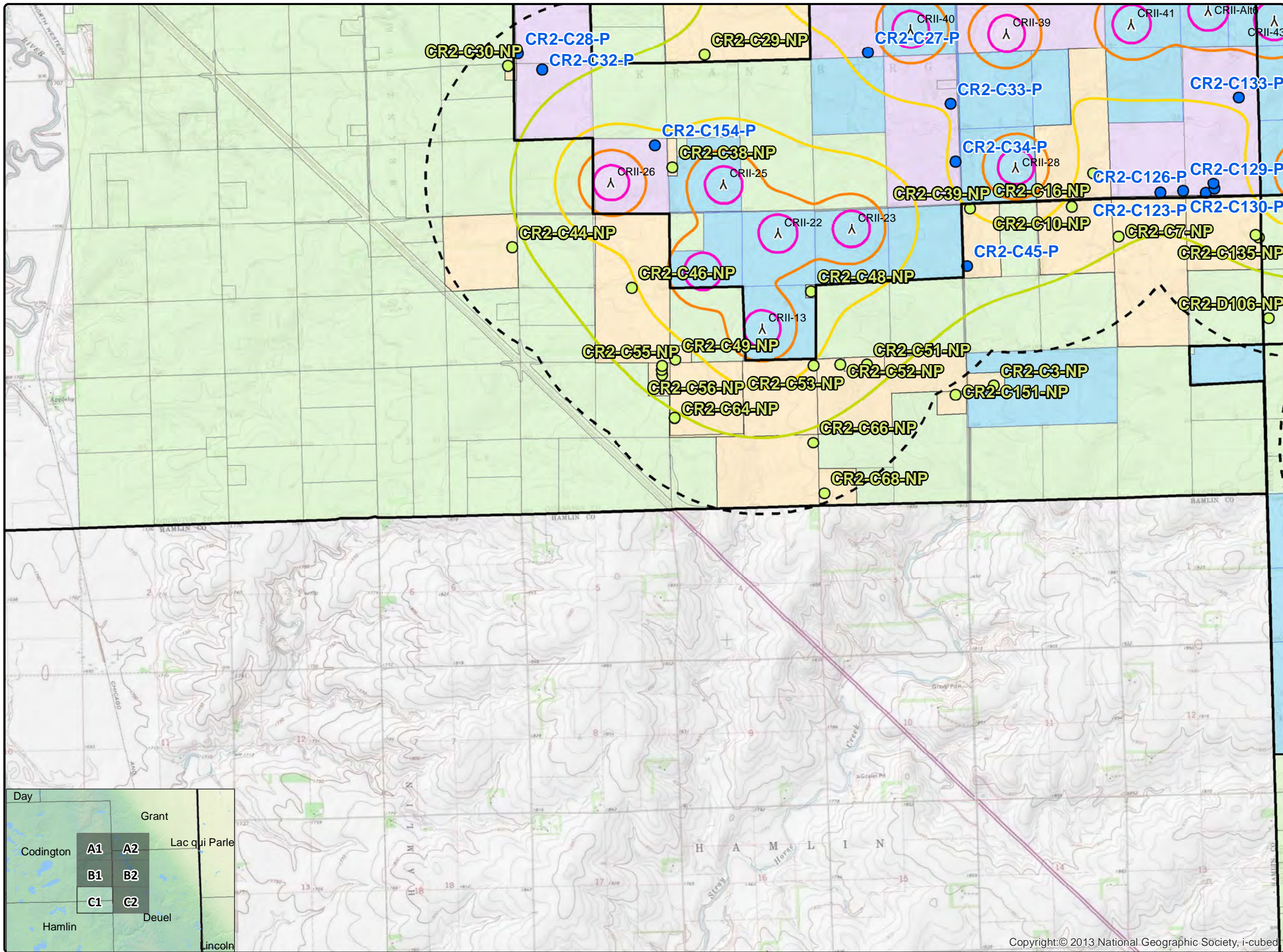
*Issue Dates*

#	Description	Date
1	Original	2019.09.18

*Drawn By:* AS      *Checked By:* JH

- Legend**
- ▲ Crowned Ridge II Turbines
  - ▲ Crowned Ridge Turbines
  - ▲ Deuel Harvest Turbines
  - 2 km Turbine Buffer
  - County Lines
  - CR II Project Boundary
  - CR2 Intervenor
  - Non-Participants Noise
  - Participants Noise
- Sound Pressure (dBA)**
- 30
  - 35
  - 40
  - 45
  - 50
- Non-Participating Codington Parcels
  - Participating Codington\_Parcels
  - Non-Participating Parcels
  - Participating Parcels

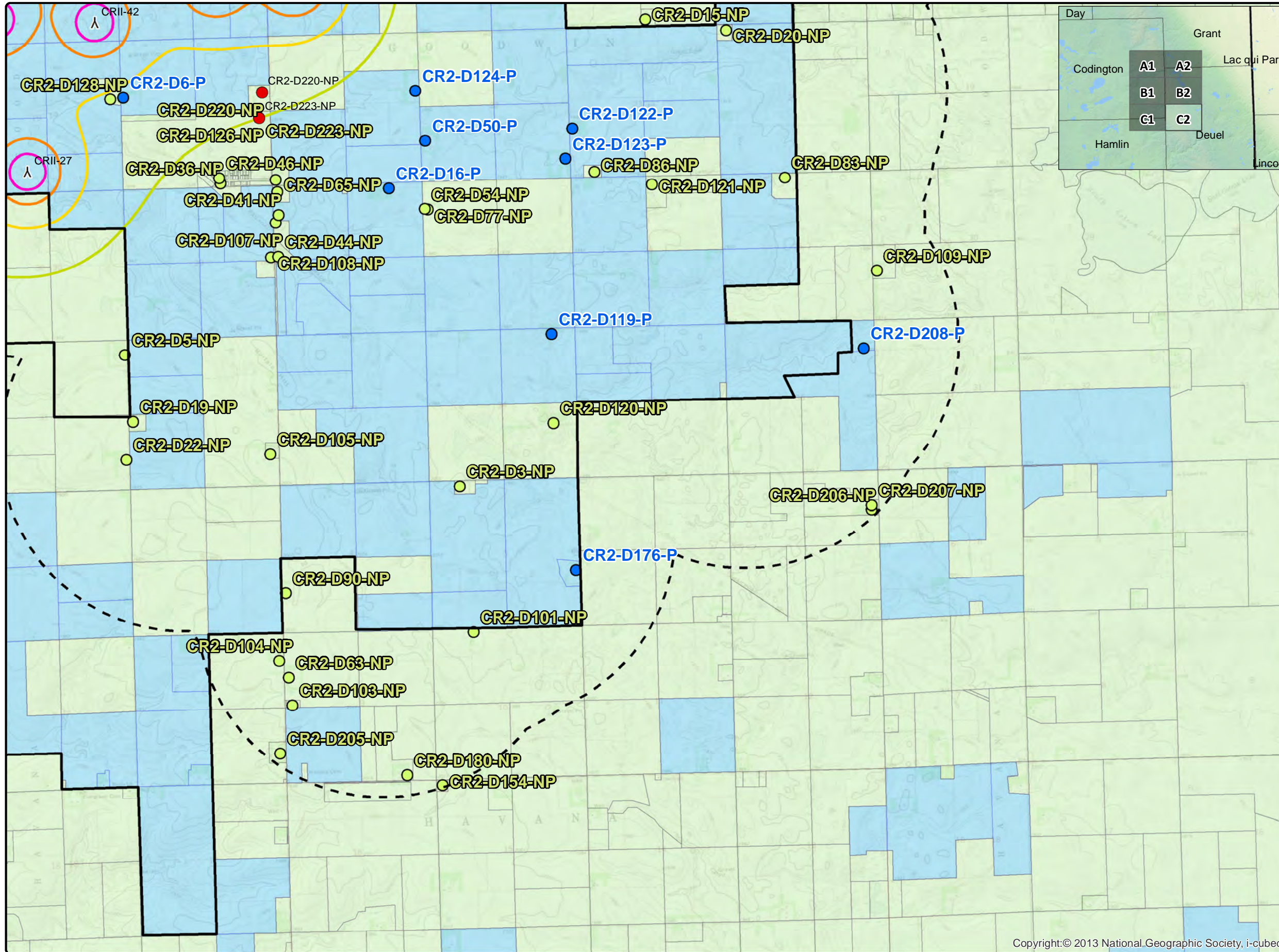
**COPYRIGHT:**  
All maps, plans, specifications, computer files, field data, notes and other documents and instruments prepared by EAPC as instruments of service shall remain the property of EAPC. EAPC shall retain all common law, statutory and other reserved rights, including the copyright thereto.



0 0.275 0.55 1.1 Mile



Neither EAPC nor any person acting on their behalf: (a) makes any warranty, express or implied, with respect to the use of any information disclosed on this drawing; or (b) assumes any liability with respect to the use of any information or methods disclosed on this drawing. Any recipient of this document, by their acceptance or use of this document, releases EAPC, its parent corporations and its affiliates, from any liability for direct, indirect, consequential, or special loss or damage whether arising in contract, warranty, express or implied, tort or otherwise, and irrespective of fault, negligence, and strict liability. The responsibilities for the applications and use of the material contained in this document remain solely with the client.




www.eapc.net | 701.775.3000

**Crowned Ridge II Wind Farm  
200 MW  
Sound Iso-Lines**

*Client*  
SWCA Environmental Consultants

*Project Description*  
Wind turbine layout with occupied structures and Codington County parcel boundaries within 2 km.  
Predicted sound pressure levels at existing residences and Codington County land parcel boundaries.  
Additional 2 dBA added.

*Location:* Watertown, SD  
*Project #:* 20174431

*Issue Dates*

#	Description	Date
1	Original	2019.09.18

Drawn By: AS      Checked By: JH

**Legend**


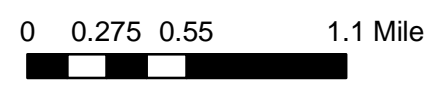
- ▲ Crowned Ridge II Turbines
- ▲ Crowned Ridge Turbines
- ▲ Deuel Harvest Turbines
- 2 km Turbine Buffer
- County Lines
- CR II Project Boundary
- CR2 Intervenor
- Non-Participants Noise
- Participants Noise

**Sound Pressure (dBA)**

- 30
- 35
- 40
- 45
- 50

- Non-Participating Codington Parcels
- Participating Codington\_Parcels
- Non-Participating Parcels
- Participating Parcels

COPYRIGHT:  
All maps, plans, specifications, computer files, field data, notes and other documents and instruments prepared by EAPC as instruments of service shall remain the property of EAPC. EAPC shall retain all common law, statutory and other reserved rights, including the copyright thereto.

Neither EAPC nor any person acting on their behalf: (a) makes any warranty, express or implied, with respect to the use of any information disclosed on this drawing; or (b) assumes any liability with respect to the use of any information or methods disclosed on this drawing. Any recipient of this document, by their acceptance or use of this document, releases EAPC, its parent corporations and its affiliates, from any liability for direct, indirect, consequential, or special loss or damage whether arising in contract, warranty, express or implied, tort or otherwise, and irrespective of fault, negligence, and strict liability. The responsibilities for the applications and use of the material contained in this document remain solely with the client.