

## APPENDIX B – AGENCY COORDINATION

# **USFWS and SDGFP**

Correspondence

**From:** Matt Heck <MHeck@scoutcleanenergy.com>  
**Sent:** Friday, October 14, 2016 1:51 PM  
**To:** 'Deborah Williams'  
**Subject:** FW: Potential South Dakota Wind Farm  
**Attachments:** Potential Wind Farm Map for USFWS.JPG; USFWS Map.kmz

Deb, please find the below and attached per our discussion. I'm also attaching a Google Earth file that went in to making that map in case that is helpful.

Matt Heck  
Director of Development  
303-305-9968  
[MHeck@scoutcleanenergy.com](mailto:MHeck@scoutcleanenergy.com)  
Scout Clean Energy  
2960 Center Green Ct. Ste 202  
Boulder, CO 80301  
<http://www.scoutcleanenergy.com/>



---

**From:** Matt Heck  
**Sent:** Wednesday, October 12, 2016 1:09 PM  
**To:** 'dave\_azure@fws.gov' <[dave\\_azure@fws.gov](mailto:dave_azure@fws.gov)>  
**Subject:** Potential South Dakota Wind Farm

Dave,

It was good talking to you this morning. Please find the attached map that shows what we are considering for a wind farm. Some notes:

- The green area is about 1,000 square miles (645,000 acres). This is the area where we have wind data and we would like to site a project somewhere in this region. We would target a ~25,000 acre subset of this green area.
- We are trying to get on a transmission line that leads us to the Ft. Thompson #2 Substation (yellow pin). The yellow transmission line is the Western line that we spoke about. This line would be our preferred target. There are alternate transmission lines that we could consider as well and those are in red.
- I have purple pins on the map to indicate the operating projects in this area.

Once you've had a chance to look at this, it would be great to get your thoughts on how/if we can responsibly site a project in this area. My initial thoughts that went in to the yellow area is to site the project further away from the Missouri River and try to have it right next to the transmission line so we weren't trying to build a new transmission line.

As we discussed, if you could send me the shapefile of your easements that would be very helpful.

Thanks

Matt Heck

Director of Development

303-305-9968

[MHeck@scoutcleanenergy.com](mailto:MHeck@scoutcleanenergy.com)

Scout Clean Energy

2960 Center Green Ct. Ste 202

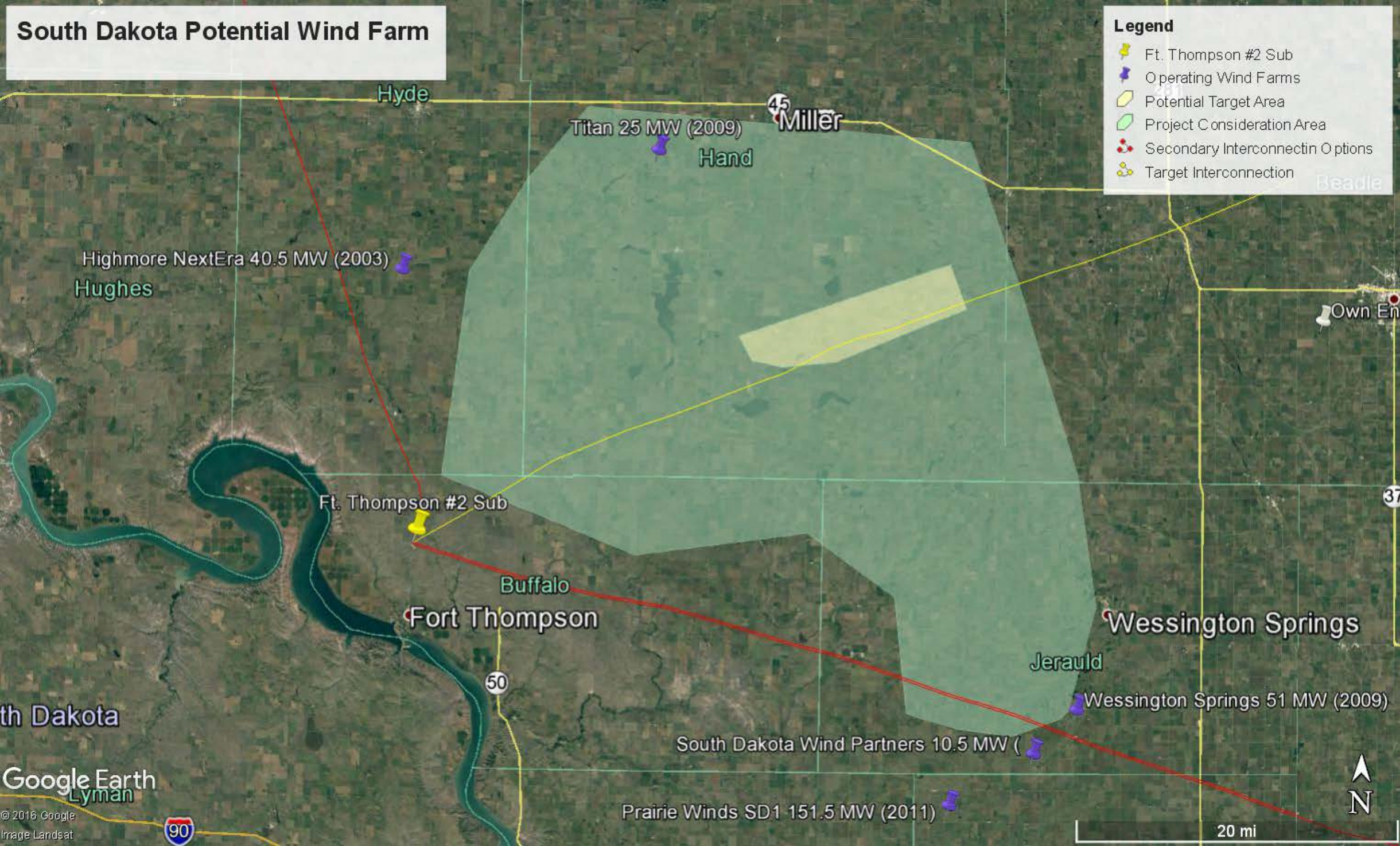
Boulder, CO 80301

<http://www.scoutcleanenergy.com/>





# South Dakota Potential Wind Farm



# **KMZ FILE**

UNABLE TO PRINT TO PDF



USFWS Map.kmz

# Sweetland Wind Farm

A project of



August 8, 2017





Scout Clean Energy:  
Project Development

Harvest Energy Services, Inc.:  
Construction and Operations

*Sunset at Mariah North 230 MW*

# Scout and Harvest: Expertise from Concept to Operations



- Scout is a wind and solar development company with 8 employees several with 15+ yrs of industry experience based in Boulder, CO with staff in CA, TX and MA.
- Scout has developed 9 major wind projects since 2010 including most recently the 230 MW Mariah North wind project in ERCOT that closed in February 2016.
- Scout employees have worked together from 6-10 years in previous companies
- A total of 10 projects currently in active development.
- Harvest Energy Services, Inc. is a fast growing independent service provider to the wind and solar industry with 46 employees and offices in Boulder, CO, CA and TX.
- HES provides construction management, operations and maintenance, and asset management services primarily to wind assets in the US and Latin America
- HES has managed more than 500 MW of construction since its founding in 2014 and services dozens of sites for GE, EDF, TerraGen, Goldwind and other owner operators.

# Mariah North Wind Farm



# Mariah North Wind Farm — Parmer County, TX

- 230 MW Phase 1 constructed in 2016
- Scout's development team managed all the development and permitting
- Harvest Energy Services was the construction manager
- Harvest Energy Services is the ongoing operations manager
- Project owned by First Reserve, Berkshire Hathaway Energy, Citigroup and HSBC

# Mariah North Wind Farm

- 35 landowners with over 20,000 acres
- \$350 million investment
- \$2,655,107.14 in local spending (aggregate, fuel, housing, meals, donations, etc.)
- Powers nearly 100,000 homes
- Provided over 200 construction jobs
- Now providing 7 permanent jobs

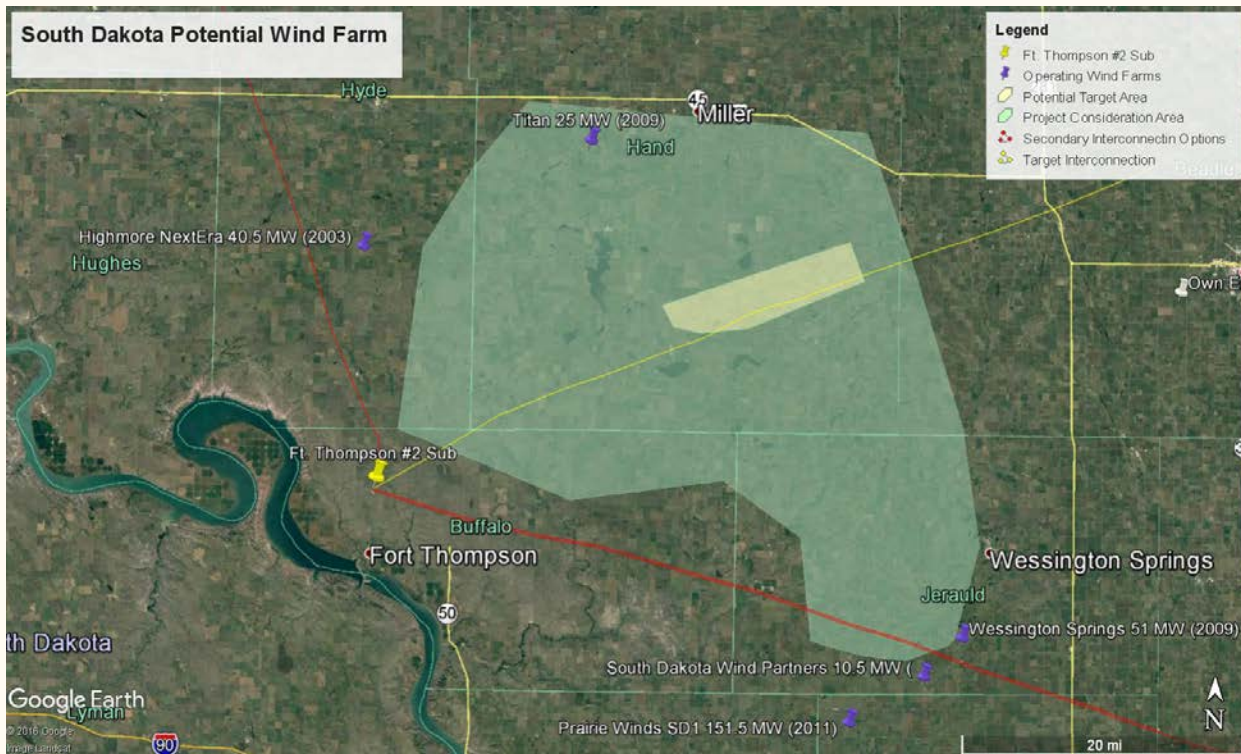


# Sweetland- Project History

- Before Scout, Sweetland was part of Titan, a 5,050 MW project sited over 500,000 acres of rural land in South Dakota
- Titan involved HVDC transmission line to Chicago in JV between BP and Clipper Windpower
- Titan abandoned after BP left the wind industry & Clipper suffered technology reliability issues
- Sweetland has been reshaped with guidance from FWS to focus on a 150-200 MW project
- Sweetland now plans to have local interconnection and offtake, with opportunity for multiple expansion phases

# Sweetland- Project History

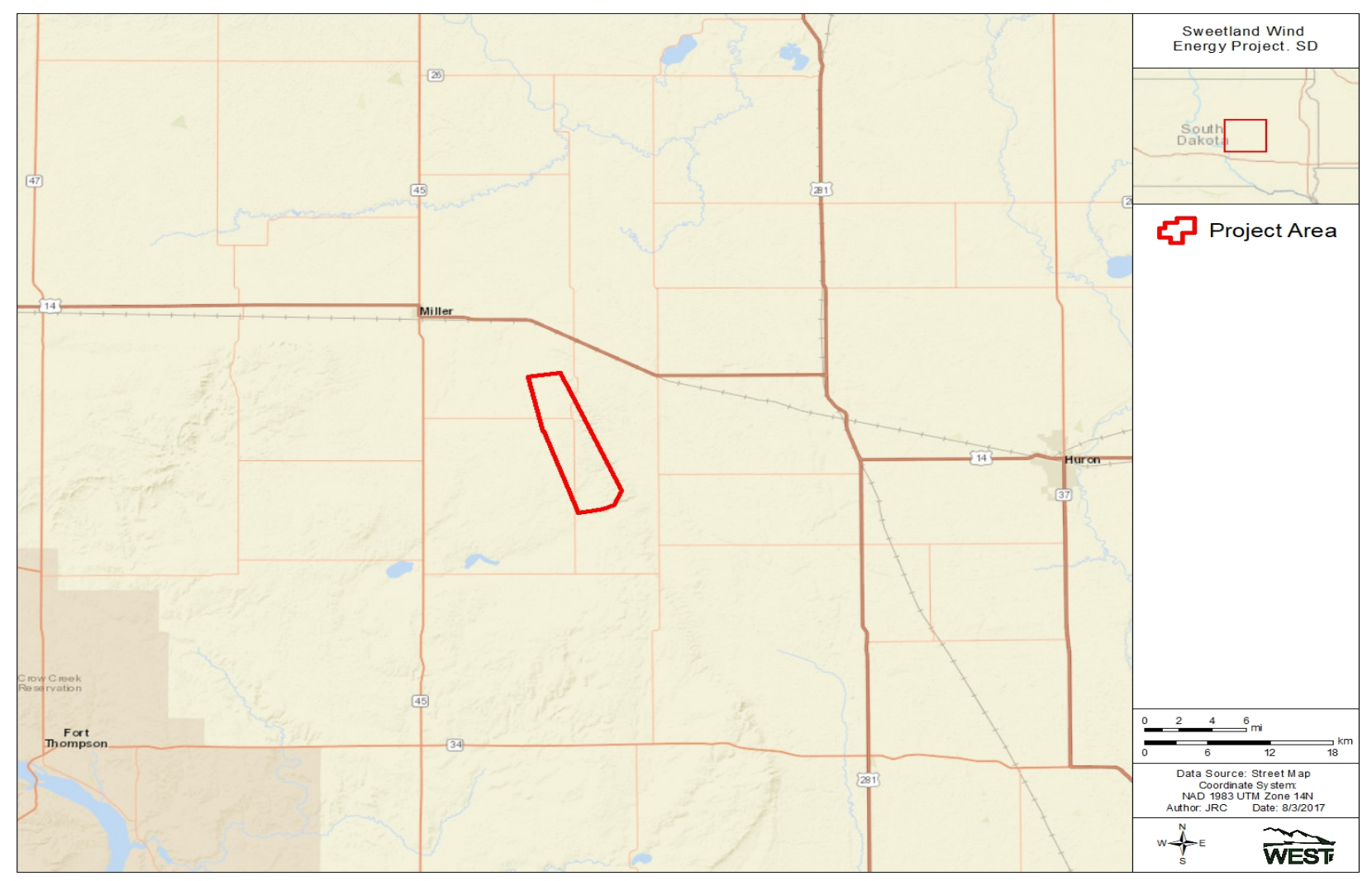
Original Project Area



Current Project Area

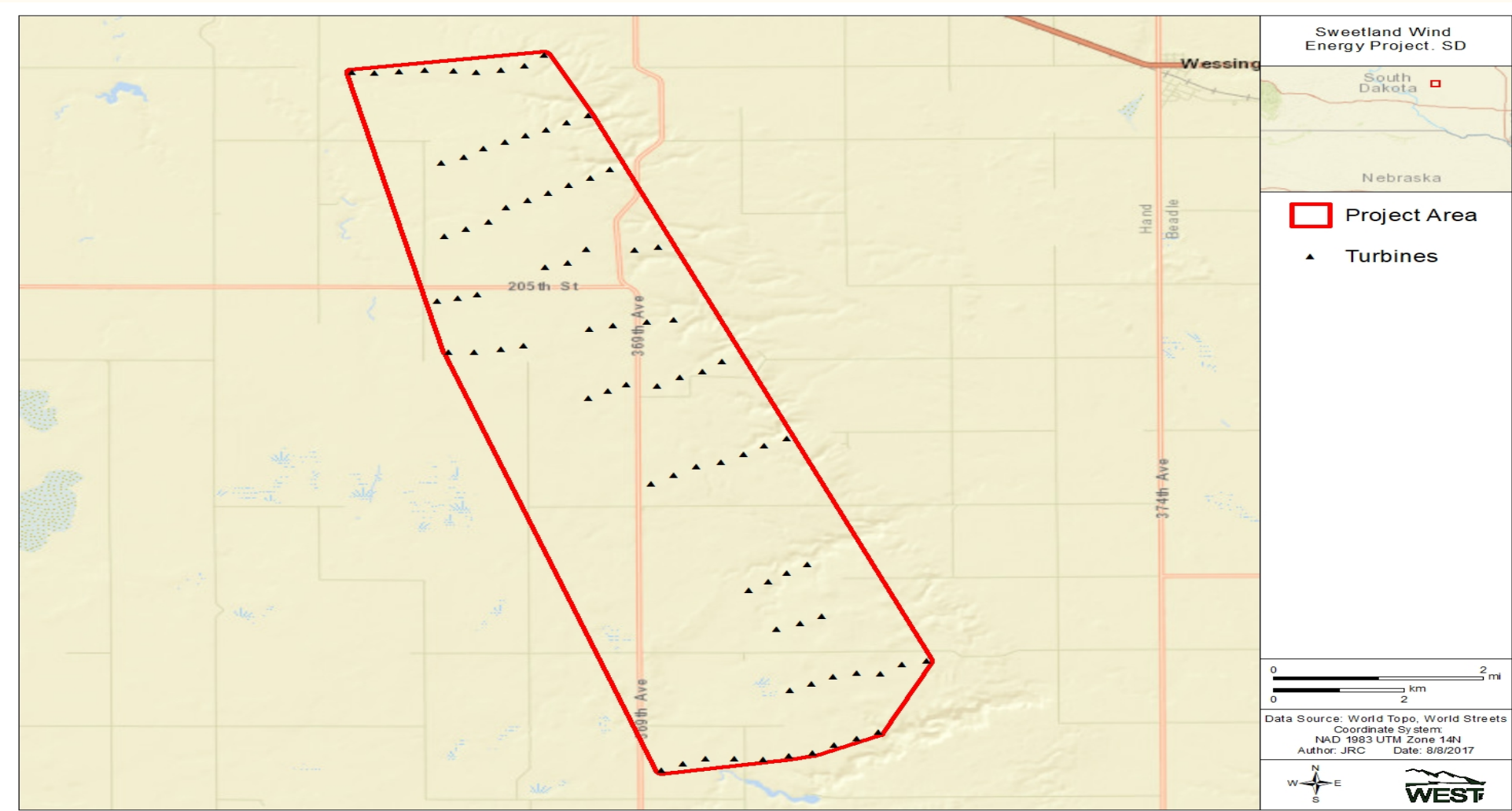


# Sweetland- Project Location Map



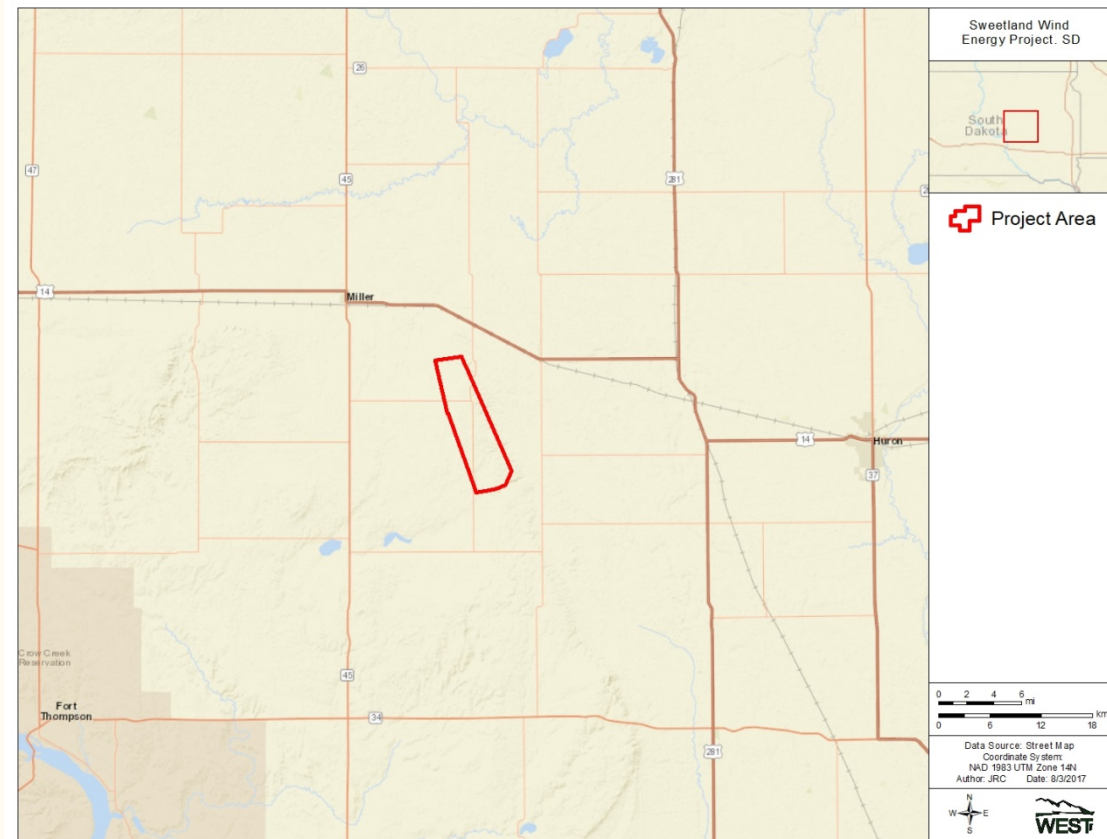


# Sweetland - Project Map



# Sweetland – Proposed Study Plan

- Objective:
- Complete Tier 3 Baseline Surveys in coordination with SDGFP and USFWS
  - Assess risk associated with the Project in accordance with WEG, and ECPG

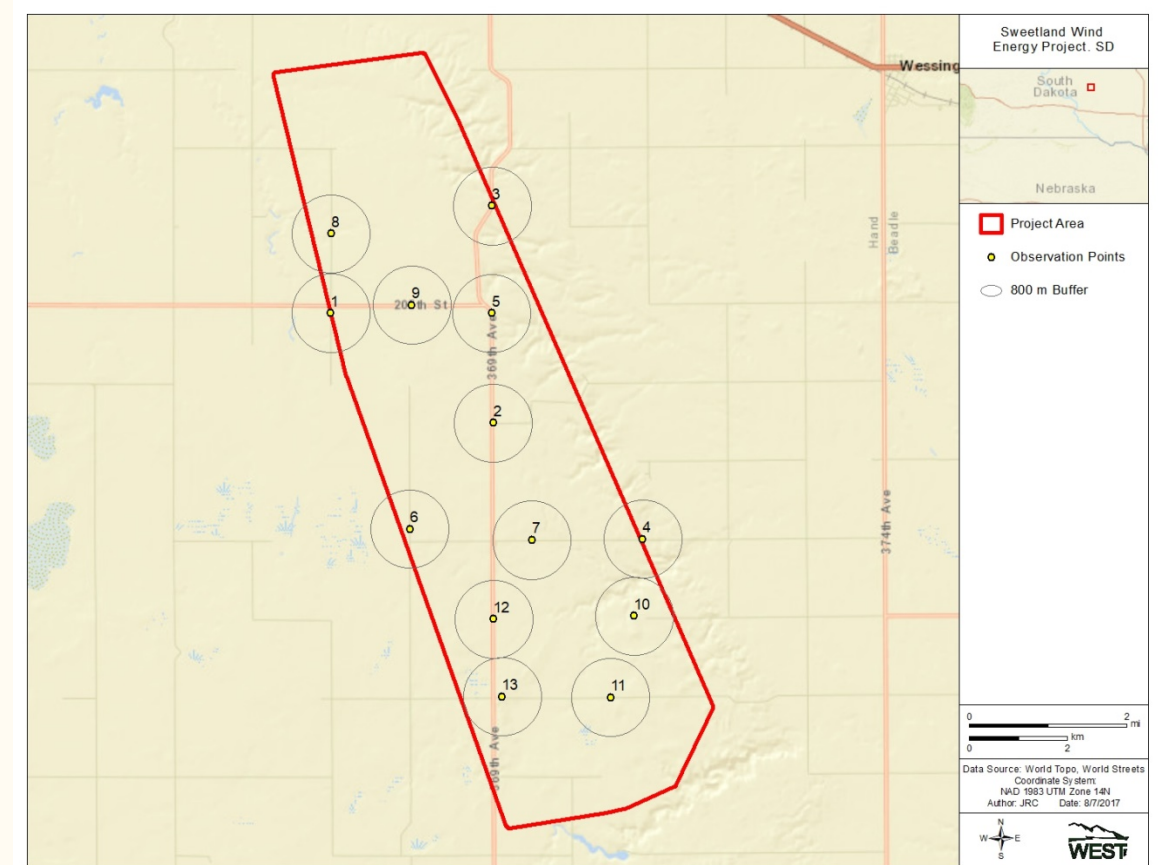


# Sweetland – Wildlife/Habitat Considerations

- Small Bird Surveys
- Eagle/Large Bird Surveys
- Eagle/Raptor Nest Surveys
- Prairie Grouse Lek Survey
- Whooping Crane Stop-over Habitat Assessment
- Acoustic Bat Activity Surveys
- Vegetation/Land Cover Mapping

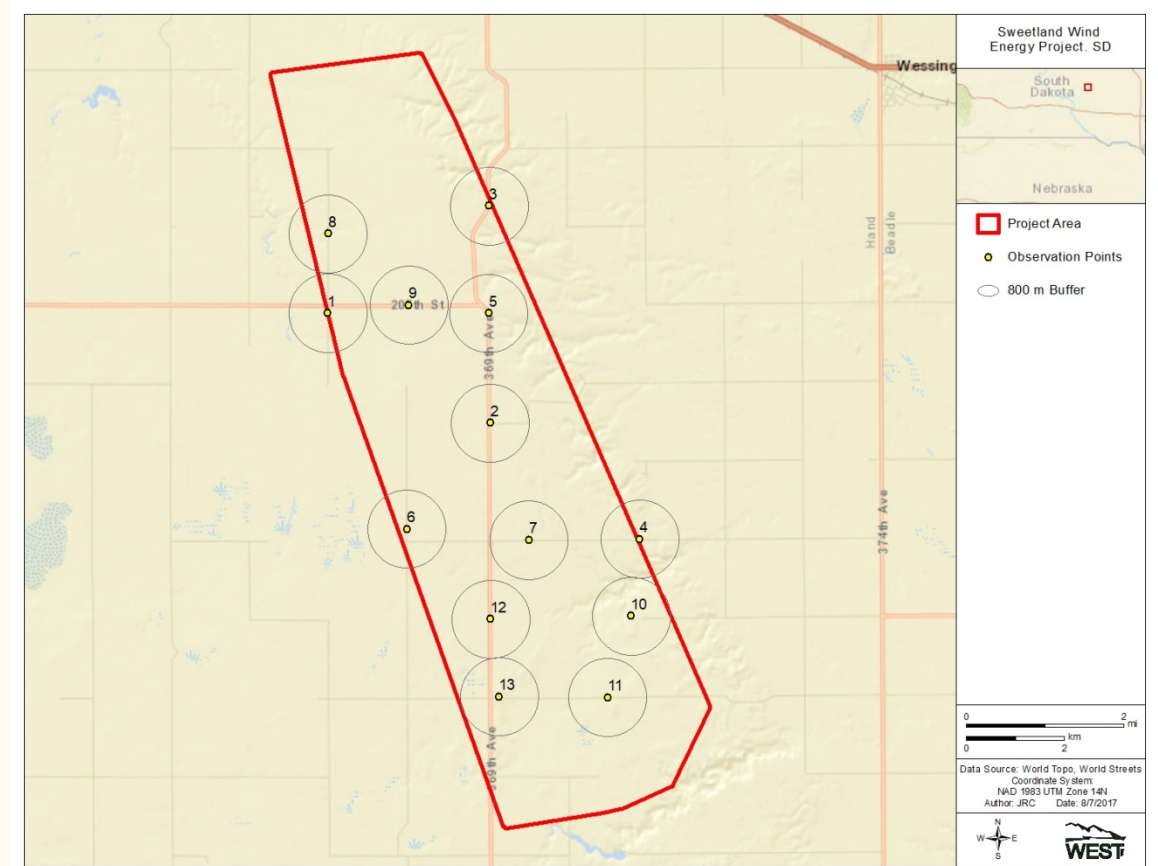
# Sweetland – Small Bird Surveys

- Fixed-point surveys focused on small birds
- 10-minute duration prior to Eagle/Large Bird Surveys with 100m radius buffer
- Methods as outlined in WEG and ECPG
  - Distance will be estimated based on surrounding landmark locations
  - Flight heights
  - Habitat
  - Detection type (auditory vs. visual)



# Sweetland – Eagle/Large Bird Surveys

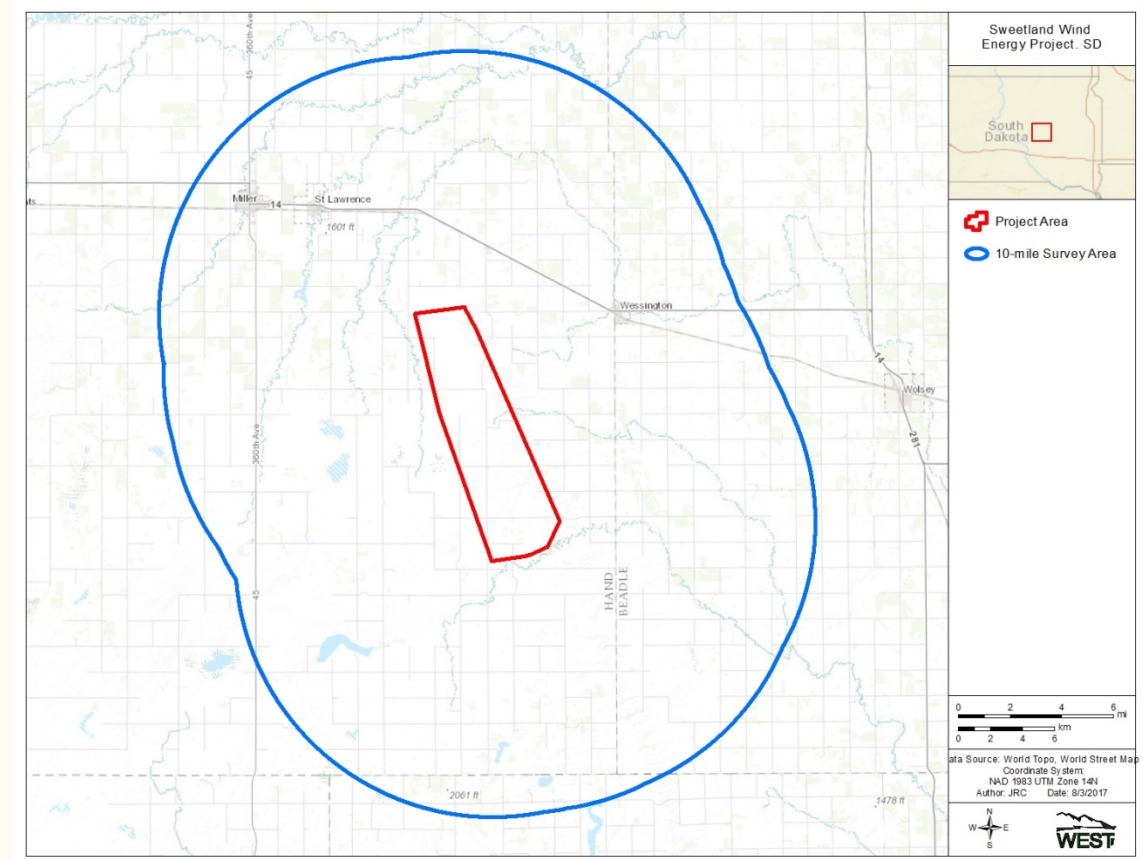
- Fixed-point surveys focused on large birds
- 60-minute duration following Small Bird Surveys with an 800m buffer
- Methods as outlined in WEG and ECPG
  - Distance will be estimated
  - Flight heights
  - Mapping flight paths
  - Eagle observations will be recorded on a per minute based per ECPG





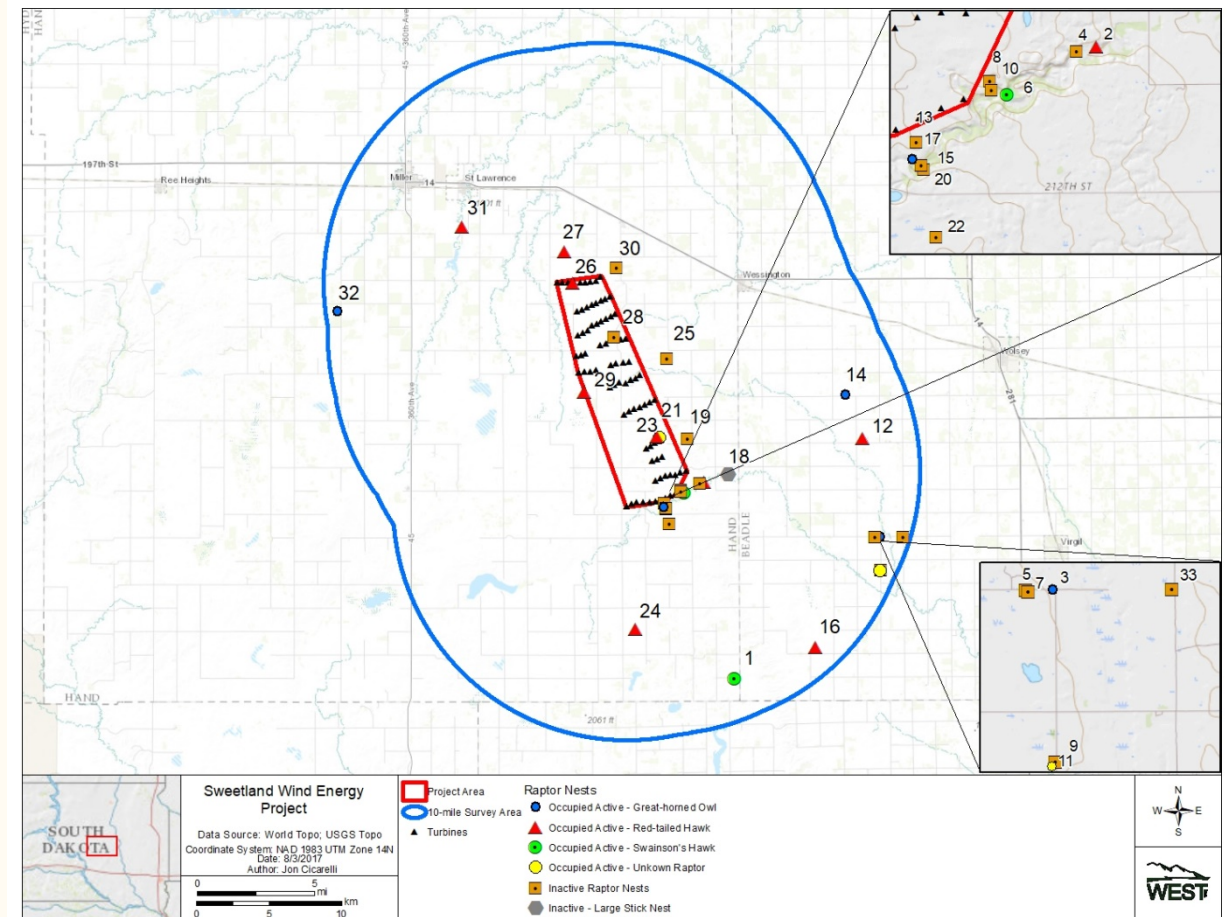
# Sweetland – Eagle/Raptor Nest Surveys

- Conducted two aerial helicopter surveys
  - Project Area (16,642 ac) - All Raptors
  - 10-Mile Buffer (372,126 ac) – All Raptors but with a focus on Eagles
  - 2 Surveys – Occupancy status
    - Early Season – courtship period
    - Late Season – mid-incubation period



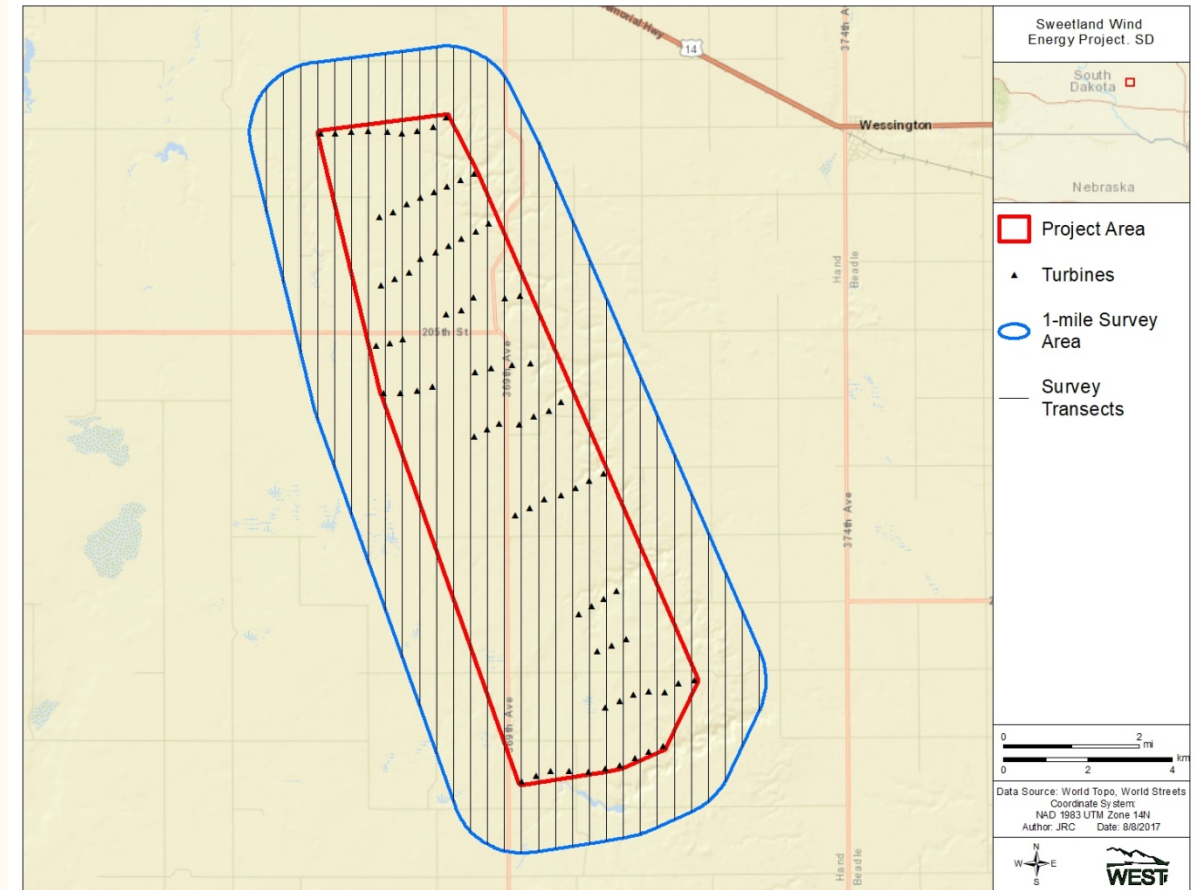
# Sweetland – Eagle/Raptor Nest Surveys

- Two rounds eagle and raptor nest surveys were conducted on March 26-28, 2017 and May 18, 2017
- A total of 33 nest structures were observed, and all were located in trees. Of these, 17 were observed to be occupied and active nests
- Three of the 17 occupied active nests and one inactive nest are located within the Project boundary (Figure 1). Additionally one red-tailed hawk nest is located 15 meters outside of the project boundary.
- Raptor species on active nests included red-tailed hawk (*Buteo jamaicensis*; n=9), great horned owl (*Bubo virginianus*; n=4), and Swainson's hawk (*Buteo swainsoni*; n=2). The species occupying two active nests could not be determined because the adult was not at the nest.
- One large stick nest was identified that could potentially be used by bald eagles (*Haliaeetus leucocephalus*), but it was unoccupied; no bald eagle nests were found.



# Sweetland – Prairie Grouse Lek Survey

- Objective is to collect pre-construction data on prairie grouse species (i.e. greater prairie chicken and sharp-tailed grouse) to help site wind turbines and minimize impacts to grouse.
- Project Area and surrounding 1-mile buffer will be flown
- Two round of aerial surveys conducted between March 15 and May 7, 2018 with at least one survey in April.
- Survey transects will be spaced a quarter-mile apart with a north/south orientation.



# Sweetland – Whooping Crane Stop-Over Habitat Assessment



- The Project is within the migration corridor for the federally listed endangered whooping crane.
- WEST will assess the Project and immediate area for potential stop-over habitat to evaluate the potential for whooping cranes to be attracted to areas that are risky because they are near turbines, or if they may lose potentially important habitat due to Project development.
- A desktop evaluation of potential habitat will be conducted using a model developed by The Watershed Institute (TWI) model (TWI 2013), as recommended by USFWS Kansas Ecological Services Field Office.



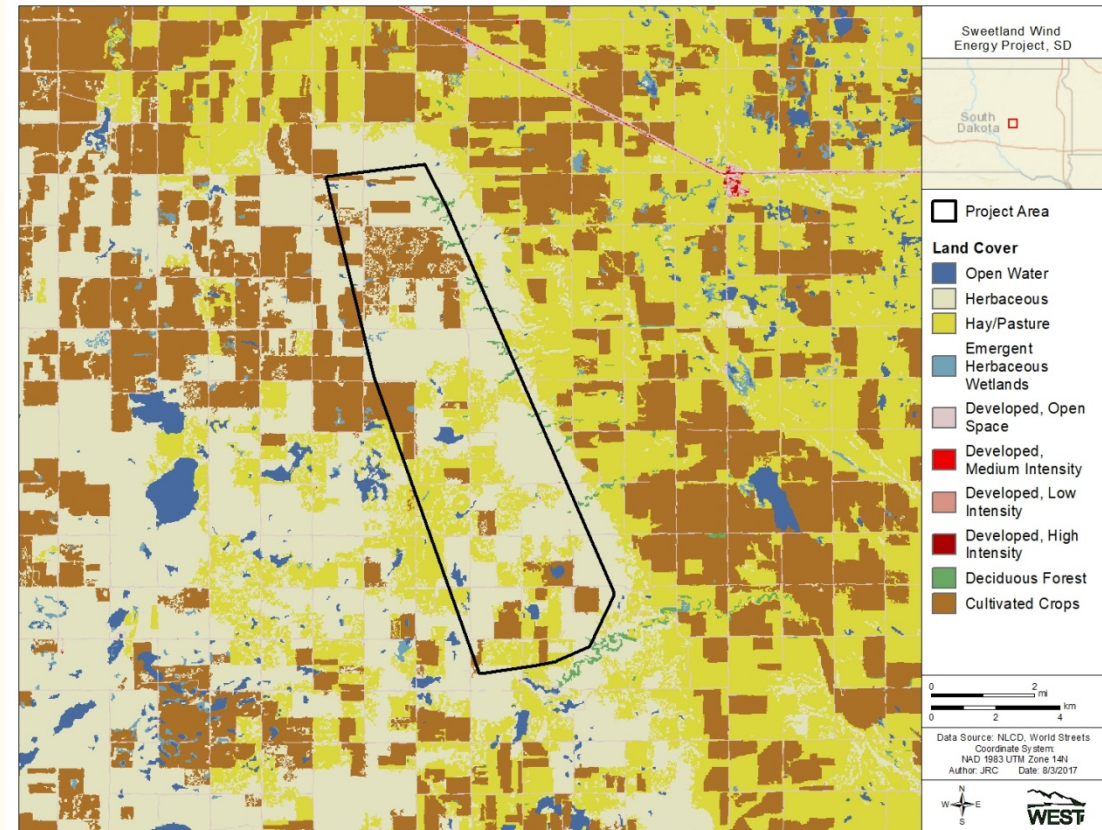
# Sweetland – Acoustic Bat Surveys

- Three detectors (two sampling locations)
  - One paired unit with microphones at 1.5 m and 50 m (MET tower installation)
  - One roaming unit
- Continuous sampling from June 1<sup>st</sup> to October 15<sup>st</sup>
- Temporal activity patterns throughout summer and fall
- Activity - calls/night



# Sweetland – Vegetation Mapping

- Guided by NLCD, NCDL, GAP
- Primary objective is to document potentially suitable habitat for TES or other sensitive status species



# Sweetland – Proposed Study Plan

## Questions?



## MEETING NOTES

**SUBJECT:** Sweetland Wind Energy Project – Project Introduction

**PROJECT:** Sweetland Wind Energy Project

**MEETING LOCATION:** SDGFP Office, Pierre SD

**MEETING DATE:** 15 August 2017

### Attendees:

- Chris Fritchman and Kenton Taylor (WEST)
- Matt Heck and Pat Landess (Scout Clean Energy)
- Silka Kempema and Leslie Murphy (SDGFP)
- Natalie Gates and Deborah Williams (USFWS)

### Topics Discussed:

Scout Clean Energy and WEST met with USFWS and SDGFP to introduce the Sweetland Wind Energy Project in Hand County, South Dakota. The intent of the meeting was to provide USFWS and SDGFP with a project introduction/update, site condition/environmental review, review the 2017 avian and bat study plan, and obtain USFWS and SDGFP feedback on proposed studies and any potential project concerns (per the USFWS's 2012 *Wind Energy Guidelines* [WEG] and 2013 *Eagle Conservation Plan Guidance* [ECPG].)

- Introductions
- Background on Scout Clean Energy
- Project Background/Status
  - Up to 80 turbines, 200 MW
  - Tier 3 studies underway in 2017
  - Approximate Commercial Operation Date (COD) 2020
  - Originally part of a much larger project (Titan project which was roughly ½ million acres) but, Scout is focusing on a much smaller project area.
  - Sweetland Wind Farm, LLC plans to tie-in to an existing Western Area Power Administration (WAPA) transmission line that runs through the southern portion of the current project boundary. Sweetland Wind Farm, LLC is aware of WAPAs programmatic EIS. One of the goals in siting the project was to avoid having to build a new transmission line.
- Siting
  - Early in the project siting process for Sweetland, Scout discovered USFWS had numerous wetland and grassland easements across Scout's preferred project area. Scout recognized the potential conflict and promptly engaged USFWS. Scout and USFWS had multiple meetings in late 2016. Scout showed USFWS a ~500,000 acre area of interest and solicited feedback on where would be a good location for a wind farm. USFWS preference was a project further north and east





## ENVIRONMENTAL & STATISTICAL CONSULTANTS

2121 Midpoint Drive, Suite 201, Fort Collins, CO 80525  
www.west-inc.com

from the original location with the goals of avoiding easements, increasing distance from the Missouri River and eliminating the need for a project transmission line. Scout agreed to move the project to accommodate this request.

- USFWS provided the USFWS easement (grassland and wetland) interests on August 14, 2017. USFWS recommends that these areas are avoided. Scout intends to avoid siting turbines in easement areas.
- SDGFP provided known grouse lek locations within the project area and surrounding 2-mile buffer on August 15, 2017. SDGFP also discussed some adjacent game production areas (GPAs) that are near the project. SDGFP recommended a one mile setback be established around known leks and GPAs.
- SDGFP and USFWS recommended siting the project in cropland to the extent possible and avoiding grasslands, especially historically untilled grasslands as well as lakes and riparian corridors.
- USFWS mentioned migratory bird avoidance and minimization and stated that they may recommend compensatory migration if project is built in grasslands based on studies that have documented grassland bird displacement and possibly waterfowl displacement.
- Topeka shiner (*Notropis topeka*) has been documented in Sand Creek (located to the south of the proposed project) however, it is unknown if the species occurs in Silver Creek. Recommend avoiding impacts to streams within the project area.
- Overview of Proposed Baseline Studies (WEST)
  - Avian Studies
    - Conducting avian/eagle use fixed point surveys at 13 points once a month following the 2013 ECPG and 2016 eagle take permit rule. Surveys started on May 26, 2017.
    - WEST conducted two rounds of helicopter surveys for eagle and raptor nests within 10 miles of the 1km buffer of the proposed turbine array.
    - Preliminary results were discussed including identification of 33 total nest structures, of which 17 were determined to be occupied active nests for the 2017 breeding season. Three of the 17 occupied active nests are located with the project area as is one unoccupied nest. One large stick nest (defined as a nest of the size that could be potentially used by an eagle) was identified approximately 1.75 miles east of the project area. No eagle nests were documented during 2017 surveys.
    - Aerial prairie grouse lek surveys will be conducted in the spring of 2018. Two surveys will be conducted within the project area and surrounding 1-mile buffer between March 15 – May 7, 2018.
    - The project is within the migration corridor of the federally listed whooping crane (*Grus Americana*). WEST will conduct a desktop evaluation of potential habitat using The Watershed Institute's (TWI) model as recommended by USFWS Kansas Ecological Service Field Office. National Wetlands Inventory (NWI) spatial data will be used for this assessment. USFWS mentioned other USFWS data sources that may be available to supplement the assessment including a potential kernel density map and layers that provide more refinement within the whooping crane corridor.
  - Bat Studies



## ENVIRONMENTAL & STATISTICAL CONSULTANTS

2121 Midpoint Drive, Suite 201, Fort Collins, CO 80525  
www.west-inc.com

- Acoustic bat activity surveys commenced on June 1, 2017 and will continue until October 15, 2017.
  - Study design includes a paired unit (with one ground and one raised detector) located at a MET tower and two additional ground units located at other potential bat habitat areas where turbines are currently proposed.
  - USFWS asked if these surveys were specifically designed for northern long-eared bats (NLEB). As discussed during the meeting these activity surveys were not designed to be species specific but rather were designed to obtain an index of bat activity at the project. USFWS stated that if no high frequency (HF) bats were detected during the acoustic surveys than no NLEB specific surveys would be recommended.
- Vegetation Mapping
  - WEST will use data from the National Land Cover Database (NLCD), National Crop Database Layer (NCDL) and GAP data to guide vegetation/habitat mapping efforts. Primary objective is to document suitable habitat for T&E species and other sensitive status species. Preliminary habitat mapping occurred on August 2 – 3, 2017.
- Other Items
  - SDGFP mentioned special status species including state listed, species monitored by the state's heritage program, and species of greatest conservation need. USFWS mentioned utilizing their Information for Planning and Consultation (IPaC) tool to identify any potential USFWS trust resources in the project area as well as the 2008 USFWS Birds of Conservation Concern list.
- Action Items
  - WEST to send meeting notes (including presentation used for meeting) and Study Plan.
  - Scout to include USFWS grassland and wetland easement data and SDGFP lek and GPA location information in project planning.
  - SDGFP provided breeding bird survey block species lists as well as prairie grouse lek location information within a 2-mile radius of the Project following the meeting.
  - WEST will reach out to the Habitat and Population Evaluation Team (HAPET) Office to see if they have recently released data that is publically available on tagged whooping cranes.

----- Forwarded message -----

From: **Kempema, Silka** <[Silka.Kempema@state.sd.us](mailto:Silka.Kempema@state.sd.us)>

Date: Tue, Aug 15, 2017 at 3:54 PM

Subject: South Dakota information

To: Chris Fritchman <[cfritchman@west-inc.com](mailto:cfritchman@west-inc.com)>

Cc: Williams, Deborah <[deborah\\_williams@fws.gov](mailto:deborah_williams@fws.gov)>, Murphy, Leslie

<[Leslie.Murphy@state.sd.us](mailto:Leslie.Murphy@state.sd.us)>, [Natalie\\_Gates@fws.gov](mailto:Natalie_Gates@fws.gov) <[Natalie\\_Gates@fws.gov](mailto:Natalie_Gates@fws.gov)>, Matt Heck

<[MHeck@scoutcleanenergy.com](mailto:MHeck@scoutcleanenergy.com)>, Kenton Taylor <[kentontaylor@west-inc.com](mailto:kentontaylor@west-inc.com)>, Patrick

Landess <[pat@scoutcleanenergy.com](mailto:pat@scoutcleanenergy.com)>

Hi all,

Species monitored by the SD Natural Heritage Program: <http://gfp.sd.gov/wildlife/threatened-endangered/rare-animal.aspx>

SD TE species: <http://gfp.sd.gov/wildlife/threatened-endangered/threatened-species.aspx>

SD Species of Greatest Conservation Need found in Table 2.1 of the following pdf:

[http://gfp.sd.gov/images/WebMaps/Viewer/WAP/Website/PlanSections/WAPCh2\\_SGCN.pdf](http://gfp.sd.gov/images/WebMaps/Viewer/WAP/Website/PlanSections/WAPCh2_SGCN.pdf)

Natalie, don't forget to share the USFWS Birds of Conservation Concern list.

Quantifying undisturbed lands in eastern South Dakota by Bauman et al. 2013:

[http://openprairie.sdstate.edu/data\\_land-](http://openprairie.sdstate.edu/data_land-easternSD/1/utm_source=sdgrassinfo&utm_campaign=sdgrassinfo&utm_medium=email&utm_term=sdgrassinfo&utm_content=sdgrassinfo)

[easternSD/1/utm\\_source=sdgrassinfo&utm\\_campaign=sdgrassinfo&utm\\_medium=email&utm\\_term=sdgrassinfo&utm\\_content=sdgrassinfo](http://openprairie.sdstate.edu/data_land-easternSD/1/utm_source=sdgrassinfo&utm_campaign=sdgrassinfo&utm_medium=email&utm_term=sdgrassinfo&utm_content=sdgrassinfo)

Breeding Bird Atlas website: <http://gfp.sd.gov/wildlife/management/diversity/breeding-bird-atlasII.aspx>. I've also attached species lists for the 2 blocks that are closest to the proposed project.

I've attached the known grouse lek locations within a 2 mile radius of the project boundary. I'll let you know what our upland game bird biologist says.

Silka

# South Dakota Breeding Bird Atlas

## Block Summary for Silver Creek In Beadle County



Effort			Species				
Block ID	# Visits	# Hours	# Confirmed	# Probable	# Possible	# Observed*	Total Species Reported
1R1402	3	9.10	20	28	19	0	67

This report lists all the species found in this specific block and the breeding status for each species within this block. Bold text indicates confirmed breeding status. \*Observed = Observed without breeding evidence

Common Name	Confirmed	Probable	Possible	*Observed
American Bittern	0	1	0	0
American Coot	0	1	0	0
American Goldfinch	0	1	0	0
American Kestrel	0	1	0	0
<b>American Robin</b>	<b>1</b>	<b>0</b>	<b>0</b>	<b>0</b>
American Wigeon	0	0	1	0
Baltimore Oriole	0	1	0	0
<b>Barn Swallow</b>	<b>1</b>	<b>0</b>	<b>0</b>	<b>0</b>
Belted Kingfisher	0	0	1	0
Black Tern	0	0	1	0
Blue Jay	0	0	1	0
Blue-winged Teal	0	1	0	0
Bobolink	0	1	0	0
<b>Brown Thrasher</b>	<b>1</b>	<b>0</b>	<b>0</b>	<b>0</b>
Brown-headed Cowbird	0	1	0	0
Chipping Sparrow	0	1	0	0
Clay-colored Sparrow	0	0	1	0
Cliff Swallow	0	1	0	0
<b>Common Grackle</b>	<b>1</b>	<b>0</b>	<b>0</b>	<b>0</b>
Common Nighthawk	0	0	1	0
Common Yellowthroat	0	1	0	0
Dickcissel	0	1	0	0
Eastern Bluebird	0	0	1	0
<b>Eastern Kingbird</b>	<b>1</b>	<b>0</b>	<b>0</b>	<b>0</b>
European Starling	0	1	0	0
Gadwall	0	1	0	0
Grasshopper Sparrow	0	1	0	0
Great Blue Heron	0	0	1	0
Great Horned Owl	0	0	1	0
Green-winged Teal	0	1	0	0
Hairy Woodpecker	0	0	1	0
<b>House Sparrow</b>	<b>1</b>	<b>0</b>	<b>0</b>	<b>0</b>
<b>House Wren</b>	<b>1</b>	<b>0</b>	<b>0</b>	<b>0</b>

Common Name	Confirmed	Probable	Possible	*Observed
<b>Killdeer</b>	<b>1</b>	<b>0</b>	<b>0</b>	<b>0</b>
Least Bittern	0	0	1	0
Mallard	0	1	0	0
Marbled Godwit	0	0	1	0
Marsh Wren	0	1	0	0
<b>Mourning Dove</b>	<b>1</b>	<b>0</b>	<b>0</b>	<b>0</b>
Northern Flicker	0	1	0	0
<b>Northern Pintail</b>	<b>1</b>	<b>0</b>	<b>0</b>	<b>0</b>
Northern Shoveler	0	1	0	0
<b>Orchard Oriole</b>	<b>1</b>	<b>0</b>	<b>0</b>	<b>0</b>
Pied-billed Grebe	0	0	1	0
Redhead	0	1	0	0
Red-headed Woodpecker	0	0	1	0
Red-tailed Hawk	0	0	1	0
<b>Red-winged Blackbird</b>	<b>1</b>	<b>0</b>	<b>0</b>	<b>0</b>
Ring-necked Pheasant	0	1	0	0
Rock Pigeon	0	1	0	0
Ruddy Duck	0	0	1	0
Sedge Wren	0	1	0	0
Song Sparrow	0	1	0	0
Sora	0	1	0	0
<b>Swainson's Hawk</b>	<b>1</b>	<b>0</b>	<b>0</b>	<b>0</b>
<b>Tree Swallow</b>	<b>1</b>	<b>0</b>	<b>0</b>	<b>0</b>
Vesper Sparrow	0	0	1	0
Virginia Rail	0	0	1	0
<b>Warbling Vireo</b>	<b>1</b>	<b>0</b>	<b>0</b>	<b>0</b>
<b>Western Kingbird</b>	<b>1</b>	<b>0</b>	<b>0</b>	<b>0</b>
<b>Western Meadowlark</b>	<b>1</b>	<b>0</b>	<b>0</b>	<b>0</b>
<b>Willow Flycatcher</b>	<b>1</b>	<b>0</b>	<b>0</b>	<b>0</b>
Wilson's Phalarope	0	1	0	0
Wilson's Snipe	0	1	0	0
Wood Duck	0	0	1	0
<b>Yellow Warbler</b>	<b>1</b>	<b>0</b>	<b>0</b>	<b>0</b>



Effort			Species				
Block ID	# Visits	# Hours	# Confirmed	# Probable	# Possible	# Observed*	Total Species Reported
1R1402	3	9.10	20	28	19	0	67

This report lists all the species found in this specific block and the breeding status for each species within this block. Bold text indicates confirmed breeding status. \*Observed = Observed without breeding evidence

Common Name	Confirmed	Probable	Possible	*Observed
<b>Yellow-headed Blackbird</b>	<b>1</b>	<b>0</b>	<b>0</b>	<b>0</b>

Common Name	Confirmed	Probable	Possible	*Observed
-------------	-----------	----------	----------	-----------

# South Dakota Breeding Bird Atlas

## Block Summary for Sand Creek In Hand County



Effort			Species				
Block ID	# Visits	# Hours	# Confirmed	# Probable	# Possible	# Observed*	Total Species Reported
2R0009	3	9.87	11	44	13	2	70

This report lists all the species found in this specific block and the breeding status for each species within this block. Bold text indicates confirmed breeding status. \*Observed = Observed without breeding evidence

Common Name	Confirmed	Probable	Possible	*Observed
American Crow	0	1	0	0
American Goldfinch	0	1	0	0
American Redstart	0	1	0	0
<b>American Robin</b>	<b>1</b>	<b>0</b>	<b>0</b>	<b>0</b>
<b>Baltimore Oriole</b>	<b>1</b>	<b>0</b>	<b>0</b>	<b>0</b>
Bank Swallow	0	1	0	0
<b>Barn Swallow</b>	<b>1</b>	<b>0</b>	<b>0</b>	<b>0</b>
Belted Kingfisher	0	0	1	0
Black-billed Cuckoo	0	0	1	0
Blue Jay	0	1	0	0
Blue-winged Teal	0	1	0	0
Bobolink	0	1	0	0
Brown Thrasher	0	1	0	0
Brown-headed Cowbird	0	1	0	0
Canada Goose	0	1	0	0
Chestnut-collared Longspur	0	0	1	0
Chipping Sparrow	0	1	0	0
Clay-colored Sparrow	0	0	0	1
Cliff Swallow	0	1	0	0
<b>Common Grackle</b>	<b>1</b>	<b>0</b>	<b>0</b>	<b>0</b>
Common Nighthawk	0	0	1	0
Common Yellowthroat	0	1	0	0
Cooper's Hawk	0	1	0	0
Dickcissel	0	1	0	0
Double-crested Cormorant	0	0	0	1
Downy Woodpecker	0	1	0	0
Eastern Kingbird	0	1	0	0
<b>Eastern Phoebe</b>	<b>1</b>	<b>0</b>	<b>0</b>	<b>0</b>
Eastern Wood-Pewee	0	0	1	0
<b>European Starling</b>	<b>1</b>	<b>0</b>	<b>0</b>	<b>0</b>
Field Sparrow	0	1	0	0
Grasshopper Sparrow	0	1	0	0

Common Name	Confirmed	Probable	Possible	*Observed
Gray Catbird	0	0	1	0
Great Blue Heron	0	0	1	0
Hairy Woodpecker	0	0	1	0
Horned Lark	0	1	0	0
<b>House Sparrow</b>	<b>1</b>	<b>0</b>	<b>0</b>	<b>0</b>
<b>House Wren</b>	<b>1</b>	<b>0</b>	<b>0</b>	<b>0</b>
Indigo Bunting	0	0	1	0
Killdeer	0	1	0	0
Lark Sparrow	0	1	0	0
Least Flycatcher	0	1	0	0
Mallard	0	1	0	0
Mourning Dove	0	1	0	0
Northern Flicker	0	1	0	0
Northern Pintail	0	1	0	0
<b>Northern Rough-winged Swallow</b>	<b>1</b>	<b>0</b>	<b>0</b>	<b>0</b>
Orchard Oriole	0	1	0	0
Red-eyed Vireo	0	1	0	0
<b>Red-headed Woodpecker</b>	<b>1</b>	<b>0</b>	<b>0</b>	<b>0</b>
Red-tailed Hawk	0	0	1	0
<b>Red-winged Blackbird</b>	<b>1</b>	<b>0</b>	<b>0</b>	<b>0</b>
Ring-necked Pheasant	0	1	0	0
Rock Pigeon	0	1	0	0
Rose-breasted Grosbeak	0	1	0	0
Savannah Sparrow	0	0	1	0
Sedge Wren	0	1	0	0
Song Sparrow	0	1	0	0
Swainson's Hawk	0	1	0	0
Tree Swallow	0	1	0	0
Upland Sandpiper	0	1	0	0
Vesper Sparrow	0	1	0	0
Warbling Vireo	0	1	0	0
Western Kingbird	0	1	0	0



Effort			Species				
Block ID	# Visits	# Hours	# Confirmed	# Probable	# Possible	# Observed*	Total Species Reported
2R0009	3	9.87	11	44	13	2	70

This report lists all the species found in this specific block and the breeding status for each species within this block. Bold text indicates confirmed breeding status. \*Observed = Observed without breeding evidence

Common Name	Confirmed	Probable	Possible	*Observed
Western Meadowlark	0	1	0	0
White-breasted Nuthatch	0	1	0	0
Wood Duck	0	1	0	0
Yellow Warbler	0	1	0	0
Yellow-breasted Chat	0	0	1	0
Yellow-headed Blackbird	0	0	1	0

Common Name	Confirmed	Probable	Possible	*Observed
-------------	-----------	----------	----------	-----------

----- Forwarded message -----

From: **Gates, Natalie** <[natalie\\_gates@fws.gov](mailto:natalie_gates@fws.gov)>

Date: Mon, Sep 18, 2017 at 4:32 PM

Subject: Re: South Dakota information

To: Chris Fritchman <[cfritchman@west-inc.com](mailto:cfritchman@west-inc.com)>

Cc: Kempema, Silka <[Silka.Kempema@state.sd.us](mailto:Silka.Kempema@state.sd.us)>, Williams, Deborah <[deborah\\_williams@fws.gov](mailto:deborah_williams@fws.gov)>, Murphy, Leslie <[Leslie.Murphy@state.sd.us](mailto:Leslie.Murphy@state.sd.us)>, Matt Heck <[MHeck@scoutcleanenergy.com](mailto:MHeck@scoutcleanenergy.com)>, Kenton Taylor <[kentontaylor@west-inc.com](mailto:kentontaylor@west-inc.com)>, Patrick Landess <[pat@scoutcleanenergy.com](mailto:pat@scoutcleanenergy.com)>

Some thoughts on these documents

-Natalie

*Natalie Gates, U.S. Fish and Wildlife Service  
Ecological Services South Dakota Field Office  
420 South Garfield Avenue, Suite 400  
Pierre, South Dakota 57501  
Phone: 605-224-8693, Ext. 227; Fax: 605-224-9974  
<http://www.fws.gov/southdakotafieldoffice/>*

On Mon, Sep 11, 2017 at 12:41 PM, Chris Fritchman <[cfritchman@west-inc.com](mailto:cfritchman@west-inc.com)> wrote:

Hey Everyone,

Please find attached draft copies of the Sweetland Baseline Wildlife Study Plan, Raptor Nest Survey Memo and Meeting Notes from our meeting on August 15, 2017. Please let us know if you have any questions and/or would like to discuss. Thanks!

Thanks,

**Chris Fritchman**  
**Wildlife Biologist**

Western Ecosystems Technology, Inc.  
Environmental & Statistical Consultants  
2121 Midpoint Drive, Suite 201  
Fort Collins, CO 80525  
314-489-6097  
[www.west-inc.com](http://www.west-inc.com)

**Follow WEST:** [Facebook](#), [Twitter](#), [Linked In](#), [Join our Mailing list](#)

CONFIDENTIALITY NOTICE: This message and any accompanying communications are covered by the Electronic Communications Privacy Act, 18 U.S.C. §§ 2510-2521, and contain information that is privileged, confidential or otherwise protected from disclosure. If you are not the intended recipient or an agent responsible for delivering the communication to the intended recipient, you are hereby notified that you have received this communication in error. Dissemination, distribution or copying of this e-mail or the information herein by anyone other than the intended recipient, or an employee or agent responsible



for delivering the message to the intended recipient, is prohibited. If you have received this communication in error, please notify us immediately by e-mail and delete the original message. Thank you.



Please consider the environment before printing.

On Tue, Aug 15, 2017 at 1:54 PM, Kempema, Silka <[Silka.Kempema@state.sd.us](mailto:Silka.Kempema@state.sd.us)> wrote:

Hi all,

Species monitored by the SD Natural Heritage Program: <http://gfp.sd.gov/wildlife/threatened-endangered/rare-animal.aspx>

SD TE species: <http://gfp.sd.gov/wildlife/threatened-endangered/threatened-species.aspx>

SD Species of Greatest Conservation Need found in Table 2.1 of the following pdf:  
[http://gfp.sd.gov/images/WebMaps/Viewer/WAP/Website/PlanSections/WAPCh2\\_SGCN.pdf](http://gfp.sd.gov/images/WebMaps/Viewer/WAP/Website/PlanSections/WAPCh2_SGCN.pdf)

Natalie, don't forget to share the USFWS Birds of Conservation Concern list.

Quantifying undisturbed lands in eastern South Dakota by Bauman et al. 2013: [http://openprairie.sdstate.edu/data\\_land-easternSD/1/utm\\_source=sdgrassinfo&utm\\_campaign=sdgrassinfo&utm\\_medium=email&utm\\_term=sdgrassinfo&utm\\_content=sdgrassinfo](http://openprairie.sdstate.edu/data_land-easternSD/1/utm_source=sdgrassinfo&utm_campaign=sdgrassinfo&utm_medium=email&utm_term=sdgrassinfo&utm_content=sdgrassinfo)

Breeding Bird Atlas website: <http://gfp.sd.gov/wildlife/management/diversity/breeding-bird-atlasII.aspx>. I've also attached species lists for the 2 blocks that are closest to the proposed project.

I've attached the known grouse lek locations within a 2 mile radius of the project boundary. I'll let you know what our upland game bird biologist says.

Silka

## Pat Landess

---

**From:** Chris Fritchman <cfritchman@west-inc.com>  
**Sent:** Wednesday, March 7, 2018 3:09 PM  
**To:** Gates, Natalie; Williams, Deborah; Kempema, Silka; Murphy, Leslie  
**Cc:** Pat Landess; Matt Heck; Kenton Taylor  
**Subject:** Sweetland Wind Project  
**Attachments:** Final\_Sweetland\_Agency Meeting Notes\_08February2018.pdf;  
Final\_Sweetland\_Eagle\_and\_Raptor\_Nest\_Survey\_Memo\_08February2018.pdf;  
Final\_Sweetland Baseline Wildlife Study Plan\_20February2018.pdf

Hi Everyone,

At the request of Scout, I have attached the meeting notes, an eagle and raptor nest memo and first year study plan. We look forward to continuing to work with you on this project.

Thanks,

**Chris Fritchman**  
**Wildlife Biologist**



Western Ecosystems Technology, Inc.  
Environmental & Statistical Consultants  
2121 Midpoint Drive, Suite 201  
Fort Collins, CO 80525  
314-489-6097  
[www.west-inc.com](http://www.west-inc.com)

**Follow WEST:** [Facebook](#), [Twitter](#), [Linked In](#), [Join our Mailing list](#)

CONFIDENTIALITY NOTICE: This message and any accompanying communications are covered by the Electronic Communications Privacy Act, 18 U.S.C. §§ 2510-2521, and contain information that is privileged, confidential or otherwise protected from disclosure. If you are not the intended recipient or an agent responsible for delivering the communication to the intended recipient, you are hereby notified that you have received this communication in error. Dissemination, distribution or copying of this e-mail or the information herein by anyone other than the intended recipient, or an employee or agent responsible for delivering the message to the intended recipient, is prohibited. If you have received this communication in error, please notify us immediately by e-mail and delete the original message. Thank you.



Please consider the environment before printing.

----- Forwarded message -----

From: **Chris Fritchman** <[cfritchman@west-inc.com](mailto:cfritchman@west-inc.com)>

Date: Tue, Jul 31, 2018 at 1:56 PM

Subject: Re: [EXTERNAL] Sweetland NLEB Surveys

To: USFWS Natalie Gates <[natalie\\_gates@fws.gov](mailto:natalie_gates@fws.gov)>

Cc: Mark Wengierski <[mark@scoutcleanenergy.com](mailto:mark@scoutcleanenergy.com)>, Patrick Landess <[pat@scoutcleanenergy.com](mailto:pat@scoutcleanenergy.com)>

Hi Natalie,

We have wrapped up the acoustic surveys for NLEB at the Sweetland Wind Farm Project. The data was screened and analyzed using Kaleidoscope Pro version 4.2.0. The analysis indicated that there were no northern long eared bats identified. As such we will not be moving forward with mist-netting at this Project. We look forward to seeing you guys next week at the site visit(s) and scoping meeting.

Thanks,

**Chris Fritchman**  
**Wildlife Biologist**

Western Ecosystems Technology, Inc.  
Environmental & Statistical Consultants

2121 Midpoint Drive, Suite 201

Fort Collins, CO 80525

314-489-6097

[www.west-inc.com](http://www.west-inc.com)

**Follow WEST:** [Facebook](#), [Twitter](#), [Linked In](#), [Join our Mailing list](#)

CONFIDENTIALITY NOTICE: This message and any accompanying communications are covered by the Electronic Communications Privacy Act, 18 U.S.C. §§ 2510-2521, and contain information that is privileged, confidential or otherwise protected from disclosure. If you are not the intended recipient or an agent responsible for delivering the communication to the intended recipient, you are hereby notified that you have received this communication in error. Dissemination, distribution or copying of this e-mail or the information herein by anyone other than the intended recipient, or an employee or agent responsible for delivering the message to the intended recipient, is prohibited. If you have received this communication in error, please notify us immediately by e-mail and delete the original message. Thank you.

 Please consider the environment before printing.

On Fri, Jun 29, 2018 at 3:33 PM, USFWS Natalie Gates <[natalie\\_gates@fws.gov](mailto:natalie_gates@fws.gov)> wrote:  
Seems reasonable, Chris. Thank you.

-Natalie

*Natalie Gates / U.S. Fish and Wildlife Service / Ecological Services South Dakota Field Office  
420 South Garfield Avenue, Suite 400 / Pierre, South Dakota 57501  
Phone: 605-224-8693, Ext. 227 / Fax: 605-224-1416  
<http://www.fws.gov/southdakotafieldoffice/>*

On Fri, Jun 15, 2018 at 12:20 PM Chris Fritchman <[cfritchman@west-inc.com](mailto:cfritchman@west-inc.com)> wrote:

Hi Natalie,

Hope you are doing well! WEST is hoping to start the acoustic presence/absences surveys for northern long-eared bats at the Sweetland Wind Project. The original scope of work proposed that we will perform acoustic surveys following the 2018 Indiana bat summer guidelines, that are also applied to all northern long-eared bat surveys, and that if there were any acoustic evidence of northern long-eared bats that we would then do follow up netting to determine the type of use at the Project. In preparation for these surveys WEST applied for a Scientific Collectors Permit with the state of South Dakota in case follow up netting was determined to be needed. Recently, Casey Heimerl with the South Dakota Game, Fish, and Parks, informed us that due to the recent discovery of P. destructans, the pathogen that causes WNS in bats, within the state that South Dakota is currently not granting any permits within the state for bat mist netting efforts until a state plan to handle WNS has been determined.

WEST does not see this currently being an issue since presence/absence surveys can still occur using acoustics surveys, however, we wanted to inform all parties that if acoustical hits do occur that mitigation plans will need to be determined from acoustical surveys alone or we seek special allowance for netting at this site from USFWS and the state of South Dakota by granting a limited Scientific Collections permit to do so. However, it should be noted that based on communication with their permitting agent and biologists that South Dakota is unlikely to do so at this time.

Please advise if this plan will not work and/or let us know if there are any questions. Thanks!

Thanks,

**Chris Fritchman**  
**Wildlife Biologist**

Western Ecosystems Technology, Inc.  
Environmental & Statistical Consultants

[2121 Midpoint Drive, Suite 201](#)

[Fort Collins, CO 80525](#)

314-489-6097

[www.west-inc.com](http://www.west-inc.com)

**Follow WEST:** [Facebook](#), [Twitter](#), [Linked In](#), [Join our Mailing list](#)

CONFIDENTIALITY NOTICE: This message and any accompanying communications are covered by the Electronic Communications Privacy Act, 18 U.S.C. §§ 2510-2521, and contain information that is privileged, confidential or otherwise protected from disclosure. If you are not the intended recipient or an agent responsible for delivering the communication to the intended recipient, you are hereby notified that you have received this communication in error. Dissemination, distribution or copying of this e-mail or the information herein by anyone other than the intended recipient, or an employee or agent responsible for delivering the message to the intended recipient, is prohibited. If you have received this communication in error, please notify us immediately by e-mail and delete the original message. Thank you.



Please consider the environment before printing.

**Subject:** FW: Sweetland Wind Project - Site Tour  
**Location:** Meet up at Cenex (490 Cook St., Wessington, SD 57381)  
  
**Start:** Tue 8/7/2018 1:00 PM  
**End:** Tue 8/7/2018 4:00 PM  
**Show Time As:** Tentative  
  
**Recurrence:** (none)  
  
**Organizer:** Bell, Jennifer

-----Original Appointment-----

**From:** Bell, Jennifer <[jbelle@burnsmcd.com](mailto:jbelle@burnsmcd.com)>

**Sent:** Wednesday, July 11, 2018 2:47 PM

**To:** Bell, Jennifer; 'Matt Marsh ([MMarsh@WAPA.GOV](mailto:MMarsh@WAPA.GOV))'; Fellow, Alyssa; Kluth, David ([Kluth@WAPA.GOV](mailto:Kluth@WAPA.GOV)); Gates, Natalie; [Silka.Kempema@state.sd.us](mailto:Silka.Kempema@state.sd.us); [leslie.murphy@state.sd.us](mailto:leslie.murphy@state.sd.us); [Deborah\\_Williams@fws.gov](mailto:Deborah_Williams@fws.gov); Mark Wengierski; Pat Landess; Matt Heck; Shaver, Douglas E; Chris Fritchman; Kenton Taylor

**Subject:** Sweetland Wind Project - Site Tour

**When:** Tuesday, August 7, 2018 1:00 PM-4:00 PM (UTC-06:00) Central Time (US & Canada).

**Where:** Meet up at Cenex (490 Cook St., Wessington, SD 57381)

*Rescheduling this site visit to Tuesday prior to the public scoping meeting to accommodate WAPA's schedule. Hopefully this will work out better for others as well.*

Hello All,

We would like to invite you to join a windshield tour of the Sweetland Wind Farm project area. The tour will take place the morning after the WAPA public scoping meeting. Our plan is to all meet up in the parking lot of the Cenex gas station in Wessington at 8am, and we can caravan from there. Please let me know if you have any questions.

**Jennifer Bell** \ Burns & McDonnell

Senior Environmental Scientist

**O** 303-474-2229 \ **F** 303-721-0563

[jbelle@burnsmcd.com](mailto:jbelle@burnsmcd.com) \ [burnsmcd.com](http://burnsmcd.com)

9785 Maroon Circle \ Suite 400 \ Centennial, CO 80112



**From:** Rohlck, Thomas <thomas\_rohlck@fws.gov>  
**Sent:** Friday, December 14, 2018 4:34 PM  
**To:** Mark Wengierski  
**Subject:** Huron WMD Grassland Easements  
**Attachments:** USFWS\_GrasslandEasements2018\_ScoutEnergy.zip

Sorry for the delay on getting this to you!

Have a Merry Christmas and Happy New Year!

Tom

--

**Thomas Rohlck**  
**Easement Specialist**  
**U.S Fish and Wildlife Service**  
**Huron Wetland Management District**  
**Huron, SD**  
**(605) 352-5894 x110**

- USFWS\_GrasslandEasements2018\_ScoutEnergy.cpg
- USFWS\_GrasslandEasements2018\_ScoutEnergy.dbf
- USFWS\_GrasslandEasements2018\_ScoutEnergy.prj
- USFWS\_GrasslandEasements2018\_ScoutEnergy.sbn
- USFWS\_GrasslandEasements2018\_ScoutEnergy.sbx
- USFWS\_GrasslandEasements2018\_ScoutEnergy.shp
-  USFWS\_GrasslandEasements2018\_ScoutEnergy.shp.xml
- USFWS\_GrasslandEasements2018\_ScoutEnergy.shx



## DRAFT MEETING NOTES

**SUBJECT:** Sweetland Wind Energy Project – Prairie Grouse

**PROJECT:** Sweetland Wind Energy Project

**MEETING  
LOCATION/TYPE:**

conference call

**MEETING DATE:** 11 January 2019

### Attendees:

- Chris Fritchman (WEST)
- Mark Wengierski (Scout Clean Energy)
- Hilary Meyer and Travis Runia (SDGFP)

### Topics Discussed:

Scout Clean Energy and WEST participated in a conference call with personnel from SDGFP to discuss prairie grouse (greater prairie chicken [*Tympanuchus cupido*] and sharp-tailed grouse [*Tympanuchus phasianellus*]) relative to Sweetland Wind Energy Project in Hand County, South Dakota. The intent of the meeting was to provide SDGFP with a project introduction/update, discuss methods and results from the first year of prairie grouse surveys conducted at the Project, discuss recommended setbacks and seasonal timing stipulations, and obtain SDGFP feedback.

- Introductions
- Background on Scout Clean Energy
- Project Background/Status
  - Up to 80 turbines, 200 MW
  - Tier 3 studies underway in 2017
  - Approximate Commercial Operation Date (COD) 2020
  - History of Sweetland Wind Farm
- Survey overview, Siting, Setbacks and Season Timing Stipulations
  - WEST provided SDGFP personnel with an overview of methods and results from prairie grouse surveys completed in 2018 at the Project.
  - WEST/Scout asked if newly identified displaying areas would require setbacks and seasonal timing stipulations.
  - Scout provided SDGFP with approximate distances from Project infrastructure (turbines and/or sub-station) to each of the four newly identified displaying areas based on their development plans. This information was also provided to SDGFP via email on January 11, 2019.
  - SDGFP indicated that they would like to see a 1-mile setback, to the extent possible, from newly identified displaying locations. SDGFP personnel agreed



## **ENVIRONMENTAL & STATISTICAL CONSULTANTS**

2121 Midpoint Drive, Suite 201, Fort Collins, CO 80525  
www.west-inc.com

these newly identified locations do not meet SDGFP's current definition of a lek, but did indicate that given the number of birds observed at the newly identified displaying locations that these locations would likely meet the definition of a lek after data is collected in 2019.

- In cases where a 1-mile setback is not possible SDGFP asked if Scout would be willing to monitor these locations during post-construction monitoring at the Project. Scout committed to two years of post-construction lek monitoring at these locations.
  - SDGFP indicated they would also recommend a seasonal 2-mile no construction buffer during the breeding season (March 1 – June 30). If construction cannot be avoided during that time, SDGFP ask that you limit construction and disruptive activities to three hours after sunrise to one hour before sunset.
- Action Items
    - WEST to send meeting notes from conference call.
    - Scout to provide SDGFP with a current turbine layout.

## Pat Landess

---

**From:** Chris Fritchman <cfritchman@west-inc.com>  
**Sent:** Monday, February 25, 2019 6:31 PM  
**To:** Meyer, Hilary  
**Cc:** Runia, Travis; Mark Wengierski; Pat Landess; Todd Mabee  
**Subject:** Re: SD Grouse Lek Information  
**Attachments:** Sweetland\_SDGFP Prairie Grouse Meeting Notes\_11January2019.docx

Good Evening,

At the request of Scout, I have attached meeting notes from our call on January 11, 2019. Our apologies for the delay. Please let us know if you have any comments or questions.

Thanks,

**Chris Fritchman**  
**Wildlife Biologist**



Western EcoSystems Technology, Inc.  
Environmental & Statistical Consultants  
Grand Rapids, MI 49546  
314-489-6097  
[www.west-inc.com](http://www.west-inc.com)

**Follow WEST:** [Facebook](#), [Twitter](#), [Linked In](#), [Join our Mailing list](#)

CONFIDENTIALITY NOTICE: This message and any accompanying communications are covered by the Electronic Communications Privacy Act, 18 U.S.C. §§ 2510-2521, and contain information that is privileged, confidential or otherwise protected from disclosure. If you are not the intended recipient or an agent responsible for delivering the communication to the intended recipient, you are hereby notified that you have received this communication in error. Dissemination, distribution or copying of this e-mail or the information herein by anyone other than the intended recipient, or an employee or agent responsible for delivering the message to the intended recipient, is prohibited. If you have received this communication in error, please notify us immediately by e-mail and delete the original message. Thank you.



Please consider the environment before printing.

On Mon, Jan 14, 2019 at 9:17 AM Meyer, Hilary <[Hilary.Meyer@state.sd.us](mailto:Hilary.Meyer@state.sd.us)> wrote:

Good morning everyone-

In regards to construction restrictions around grouse leks, I found some language in our Prairie Grouse Management Plan (pg 17; attached). We would prefer a 2 mile no construction buffer during the breeding season (March 1-June 30).



If construction cannot be avoided during that time, we ask that you limit construction and disruptive activities to three hours after sunrise to one hour before sunset. Please let me know if you have any further questions.

**Hilary Meyer** | Environmental Review Senior Biologist

South Dakota Game, Fish and Parks

523 East Capitol Avenue | Pierre, SD 57501

605.773.6208 | [Hilary.Meyer@state.sd.us](mailto:Hilary.Meyer@state.sd.us)

**From:** Chris Fritchman [mailto:[cfritchman@west-inc.com](mailto:cfritchman@west-inc.com)]

**Sent:** Friday, January 11, 2019 7:43 AM

**To:** Runia, Travis; Meyer, Hilary

**Cc:** Mark Wengierski; Pat Landess; Solem, Alex (GFP)

**Subject:** Re: [EXT] SD Grouse Lek Information

Hi Hilary and Travis,

Thank you for carving out so time to chat with us today. I have included an agenda for our call below. Please let us know if you have any questions.

### **Agenda**

- Introductions
- Project Overview - brief overview of the Project. *Scout to provide*
- Provide an update on results from 2017 surveys. *WEST to provide*
- Discuss historic lek information provided by SDGFP (attached here for reference/review). Are these lek locations currently considered active?

- Discuss setbacks and timing stipulations, if necessary, from historic leks as well as newly identified displaying areas. *Distances to current infrastructure is included in the table below*

Type	Set-back (proposed)	Turbine
Displaying Grouse 4	¼ mile	T-5A
Displaying Grouse 4	¼ mile	T-17 NEW
Displaying Grouse 2	tbd	Substation
Displaying Grouse 3	¼ mile	T-60
Displaying Grouse 1	N/A	~3+ miles from nearest

Thanks,

**Chris Fritchman**

**Wildlife Biologist**



Western EcoSystems Technology, Inc.  
Environmental & Statistical Consultants

Grand Rapids, MI 49546

314-489-6097

[www.west-inc.com](http://www.west-inc.com)

**Follow WEST:** [Facebook](#), [Twitter](#), [Linked In](#), [Join our Mailing list](#)

CONFIDENTIALITY NOTICE: This message and any accompanying communications are covered by the Electronic Communications Privacy Act, 18 U.S.C. §§ 2510-2521, and contain information that is privileged, confidential or otherwise protected from disclosure. If you are not the intended recipient or an agent responsible for delivering the communication to the intended recipient, you are hereby notified that you have received this communication in error. Dissemination, distribution or copying of this e-mail or the information herein by anyone other than the intended recipient, or an employee or agent responsible for delivering the message to the intended recipient, is prohibited. If you have received this communication in error, please notify us immediately by e-mail and delete the original message. Thank you.



Please consider the environment before printing.

On Mon, Jan 7, 2019 at 12:24 PM Chris Fritchman <[cfritchman@west-inc.com](mailto:cfritchman@west-inc.com)> wrote:

Thanks Travis! Let's aim for Friday January 11 from 9-9:30 am (CT). I'll send along an updated calendar invite shortly. Thanks!

**Chris Fritchman**

**Wildlife Biologist**



Western EcoSystems Technology, Inc.  
Environmental & Statistical Consultants

Grand Rapids, MI 49546

314-489-6097

[www.west-inc.com](http://www.west-inc.com)

**Follow WEST:** [Facebook](#), [Twitter](#), [Linked In](#), [Join our Mailing list](#)

CONFIDENTIALITY NOTICE: This message and any accompanying communications are covered by the Electronic Communications Privacy Act, 18 U.S.C. §§ 2510-2521, and contain information that is privileged, confidential or otherwise protected from disclosure. If you are not the intended recipient or an agent responsible for delivering the communication to the intended recipient, you are hereby notified that you have received this communication in error. Dissemination, distribution or copying of this e-mail or the information herein by anyone other than the intended recipient, or an employee or agent responsible for delivering the message to the intended recipient, is prohibited. If you have received this communication in error, please notify us immediately by e-mail and delete the original message. Thank you.

 Please consider the environment before printing.

On Mon, Jan 7, 2019 at 10:45 AM Runia, Travis <[Travis.Runia@state.sd.us](mailto:Travis.Runia@state.sd.us)> wrote:

I'm pretty open. Wednesday the 9<sup>th</sup> from 10-11 is out, as is Friday the 11<sup>th</sup> after 930.

Travis

**From:** Chris Fritchman [mailto:[cfritchman@west-inc.com](mailto:cfritchman@west-inc.com)]  
**Sent:** Monday, January 07, 2019 9:37 AM  
**To:** Meyer, Hilary  
**Cc:** Runia, Travis; Mark Wengierski; Pat Landess; Solem, Alex (GFP)  
**Subject:** Re: [EXT] SD Grouse Lek Information

Thanks Hilary!

Travis - how is your schedule looking for the next two weeks?

Thanks,

**Chris Fritchman**

**Wildlife Biologist**



Western EcoSystems Technology, Inc.  
Environmental & Statistical Consultants

Grand Rapids, MI 49546

314-489-6097

[www.west-inc.com](http://www.west-inc.com)

**Follow WEST:** [Facebook](#), [Twitter](#), [Linked In](#), [Join our Mailing list](#)

CONFIDENTIALITY NOTICE: This message and any accompanying communications are covered by the Electronic Communications Privacy Act, 18 U.S.C. §§ 2510-2521, and contain information that is privileged, confidential or otherwise protected from disclosure. If you are not the intended recipient or an agent responsible for delivering the communication to the intended recipient, you are hereby notified that you have received this communication in error. Dissemination, distribution or copying of this e-mail or the information herein by anyone other than the intended recipient, or an employee or agent responsible for delivering the message to the intended recipient, is prohibited. If you have received this communication in error, please notify us immediately by e-mail and delete the original message. Thank you.

 Please consider the environment before printing.

On Mon, Jan 7, 2019 at 10:34 AM Meyer, Hilary <[Hilary.Meyer@state.sd.us](mailto:Hilary.Meyer@state.sd.us)> wrote:

Hi Chris-

Sorry about the delayed response, I've been digging out from the mountain of emails over the holidays. I'm pretty open the next two weeks if you would like to set-up another call. I am **not** available during these times (CST):

Tomorrow 1/8/19 9:30a-12p

Tues 1/15 9a-11am

Thurs 1/17/19 2pm-5pm

Friday 1/18/19- All day

Other than that, I should be able to make just about anything work.

**Hilary Meyer** | Environmental Review Senior Biologist

South Dakota Game, Fish and Parks

523 East Capitol Avenue | Pierre, SD 57501

605.773.6208 | [Hilary.Meyer@state.sd.us](mailto:Hilary.Meyer@state.sd.us)



**From:** Chris Fritchman [mailto:[cfritchman@west-inc.com](mailto:cfritchman@west-inc.com)]  
**Sent:** Thursday, January 03, 2019 12:05 PM  
**To:** Runia, Travis; Meyer, Hilary  
**Cc:** Mark Wengierski; Pat Landess; Solem, Alex (GFP)  
**Subject:** Re: [EXT] SD Grouse Lek Information

Hi Hilary and Travis,

Hope you guys had a nice holiday. We wanted to check in and see if you guys have had a chance to review our email from December 20th?

It may be easiest to hop on another call to discuss some of our questions. With that mind are there certain times/days you guys are available in the next week or so? Thanks!

**Chris Fritchman**

**Wildlife Biologist**



Western EcoSystems Technology, Inc.  
Environmental & Statistical Consultants

Grand Rapids, MI 49546

314-489-6097

[www.west-inc.com](http://www.west-inc.com)

**Follow WEST:** [Facebook](#), [Twitter](#), [Linked In](#), [Join our Mailing list](#)

CONFIDENTIALITY NOTICE: This message and any accompanying communications are covered by the Electronic Communications Privacy Act, 18 U.S.C. §§ 2510-2521, and contain information that is privileged, confidential or otherwise protected from disclosure. If you are not the intended recipient or an agent responsible for delivering the communication to the intended recipient, you are hereby notified that you have received this communication in error. Dissemination, distribution or copying of this e-mail or the information herein by anyone other than the intended recipient, or an employee or agent responsible for delivering the message to the intended recipient, is prohibited. If you have received this communication in error, please notify us immediately by e-mail and delete the original message. Thank you.

On Thu, Dec 20, 2018 at 3:34 PM Chris Fritchman <[cfritchman@west-inc.com](mailto:cfritchman@west-inc.com)> wrote:

Hey Guys,

Sorry to hear that Tavis and Hilary aren't feeling well, hope you both feel better soon. Thanks Alex (cc'ed here) for jumping on the call.

Hilary - Alex mentioned that SDGFP has a new setback recommendations document for prairie grouse. Could you please send that along for our review? I am attaching the recommendations document we are aware of (maybe these are one and the same). I believe this came from Leslie Murphy.

Thanks,

**Chris Fritchman**

**Wildlife Biologist**



Western EcoSystems Technology, Inc.  
Environmental & Statistical Consultants

Grand Rapids, MI 49546

314-489-6097

[www.west-inc.com](http://www.west-inc.com)

**Follow WEST:** [Facebook](#), [Twitter](#), [Linked In](#), [Join our Mailing list](#)

CONFIDENTIALITY NOTICE: This message and any accompanying communications are covered by the Electronic Communications Privacy Act, 18 U.S.C. §§ 2510-2521, and contain information that is privileged, confidential or otherwise protected from disclosure. If you are not the intended recipient or an agent responsible for delivering the communication to the intended recipient, you are hereby notified that you have received this communication in error. Dissemination, distribution or copying of this e-mail or the information herein by anyone other than the intended recipient, or an employee or agent responsible for delivering the message to the intended recipient, is prohibited. If you have received this communication in error, please notify us immediately by e-mail and delete the original message. Thank you.



Please consider the environment before printing.

On Thu, Dec 20, 2018 at 12:39 PM Chris Fritchman <[cfritchman@west-inc.com](mailto:cfritchman@west-inc.com)> wrote:

Hi Hilary and Travis,

Thank you for carving out so time to chat with us today. I have included an agenda for our call below. Please let us know if you have any questions.

#### **Agenda**

- Introductions
- Project Overview - brief overview of the Project. *Scout to provide*
- Provide an update on results from 2017 surveys. *WEST to provide*
- Discuss historic lek information provided by SDGFP (attached here for reference/review). Are these lek locations currently considered active?
- Discuss setbacks and timing stipulations, if necessary, from historic leks as well as newly identified displaying areas. *Distances to current infrastructure is included in the table below*

Type	Set-back (proposed)	Turbine
Displaying Grouse 4	¼ mile	T-5A
Displaying Grouse 4	¼ mile	T-17 NEW
Displaying Grouse 2	tbd	Substation
Displaying Grouse 3	¼ mile	T-60
Displaying Grouse 1	N/A	~3+ miles from nearest

Thanks,

**Chris Fritchman**

**Wildlife Biologist**



Western EcoSystems Technology, Inc.  
Environmental & Statistical Consultants

Grand Rapids, MI 49546

314-489-6097

[www.west-inc.com](http://www.west-inc.com)

**Follow WEST:** [Facebook](#), [Twitter](#), [Linked In](#), [Join our Mailing list](#)

CONFIDENTIALITY NOTICE: This message and any accompanying communications are covered by the Electronic Communications Privacy Act, 18 U.S.C. §§ 2510-2521, and contain information that is privileged, confidential or otherwise protected from disclosure. If you are not the intended recipient or an agent responsible for delivering the communication to the intended recipient, you are hereby notified that you have received this communication in error. Dissemination, distribution or copying of this e-mail or the information herein by anyone other than the intended recipient, or an employee or agent responsible for delivering the message to the intended recipient, is prohibited. If you have received this communication in error, please notify us immediately by e-mail and delete the original message. Thank you.



Please consider the environment before printing.

On Mon, Dec 17, 2018 at 2:39 PM Chris Fritchman <[cfritchman@west-inc.com](mailto:cfritchman@west-inc.com)> wrote:

Thanks Hilary and Travis! I'll send out a calendar invite along with call in information here shortly.

Thanks,

**Chris Fritchman**

## Wildlife Biologist



Western EcoSystems Technology, Inc.  
Environmental & Statistical Consultants

Grand Rapids, MI 49546

314-489-6097

[www.west-inc.com](http://www.west-inc.com)

**Follow WEST:** [Facebook](#), [Twitter](#), [Linked In](#), [Join our Mailing list](#)

CONFIDENTIALITY NOTICE: This message and any accompanying communications are covered by the Electronic Communications Privacy Act, 18 U.S.C. §§ 2510-2521, and contain information that is privileged, confidential or otherwise protected from disclosure. If you are not the intended recipient or an agent responsible for delivering the communication to the intended recipient, you are hereby notified that you have received this communication in error. Dissemination, distribution or copying of this e-mail or the information herein by anyone other than the intended recipient, or an employee or agent responsible for delivering the message to the intended recipient, is prohibited. If you have received this communication in error, please notify us immediately by e-mail and delete the original message. Thank you.

 Please consider the environment before printing.

On Mon, Dec 17, 2018 at 2:36 PM Runia, Travis <[Travis.Runia@state.sd.us](mailto:Travis.Runia@state.sd.us)> wrote:

Me too

---

**From:** Mark Wengierski [mailto:[mark@scoutcleanenergy.com](mailto:mark@scoutcleanenergy.com)]  
**Sent:** Monday, December 17, 2018 1:30 PM  
**To:** Meyer, Hilary; Chris Fritchman  
**Cc:** Runia, Travis; Pat Landess  
**Subject:** RE: [EXT] SD Grouse Lek Information

Works for me too.

Mark Wengierski



Scout Clean Energy | Project Manager

4865 Sterling Drive, Suite 200 | Boulder, CO 80301

C: (832) 646-7730 | O: (720) 592-0512

**Error! Filename not specified.**

[www.scoutcleanenergy.com](http://www.scoutcleanenergy.com)

---

**From:** Meyer, Hilary <[Hilary.Meyer@state.sd.us](mailto:Hilary.Meyer@state.sd.us)>  
**Sent:** Monday, December 17, 2018 12:27 PM  
**To:** Chris Fritchman <[cfritchman@west-inc.com](mailto:cfritchman@west-inc.com)>  
**Cc:** Runia, Travis <[Travis.Runia@state.sd.us](mailto:Travis.Runia@state.sd.us)>; Mark Wengierski <[mark@scoutcleanenergy.com](mailto:mark@scoutcleanenergy.com)>; Pat Landess <[pat@scoutcleanenergy.com](mailto:pat@scoutcleanenergy.com)>  
**Subject:** RE: SD Grouse Lek Information

That works for me.

**From:** Chris Fritchman [<mailto:cfritchman@west-inc.com>]  
**Sent:** Monday, December 17, 2018 1:26 PM  
**To:** Meyer, Hilary  
**Cc:** Runia, Travis; Mark Wengierski; Patrick Landess  
**Subject:** Re: [EXT] SD Grouse Lek Information

Sure, would 1-2 pm (CT) work?

Thanks,

**Chris Fritchman**

**Wildlife Biologist**



Western EcoSystems Technology, Inc.  
Environmental & Statistical Consultants

Grand Rapids, MI 49546

314-489-6097

[www.west-inc.com](http://www.west-inc.com)

**Follow WEST:** [Facebook](#), [Twitter](#), [Linked In](#), [Join our Mailing list](#)

CONFIDENTIALITY NOTICE: This message and any accompanying communications are covered by the Electronic Communications Privacy Act, 18 U.S.C. §§ 2510-2521, and contain information that is privileged, confidential or otherwise protected from disclosure. If you are not the intended recipient or an agent responsible for delivering the communication to the intended recipient, you are hereby notified that you have received this communication in error. Dissemination, distribution or copying of this e-mail or the information herein by anyone other than the intended recipient, or an employee or agent responsible for delivering the message to the intended recipient, is prohibited. If you have received this communication in error, please notify us immediately by e-mail and delete the original message. Thank you.



Please consider the environment before printing.

On Mon, Dec 17, 2018 at 11:28 AM Meyer, Hilary <[Hilary.Meyer@state.sd.us](mailto:Hilary.Meyer@state.sd.us)> wrote:

Hi Chris-

I had something come up on Thursday afternoon, so I will only be available from 8a-2pm on Thursday. Any chance we could move the call a little earlier on Thursday?

-Hilary

**From:** Chris Fritchman [mailto:[cfritchman@west-inc.com](mailto:cfritchman@west-inc.com)]

**Sent:** Monday, December 17, 2018 10:15 AM

**To:** Meyer, Hilary; Runia, Travis

**Cc:** Mark Wengierski; Patrick Landess

**Subject:** Re: [EXT] SD Grouse Lek Information

Hi Hilary,

Thank you for getting back to us, and yes we would like to set up a call with you guys! Does 2:30-3:30 (CT) on Thursday still work for you guys?

Thanks,

**Chris Fritchman**

**Wildlife Biologist**



Western EcoSystems Technology, Inc.  
Environmental & Statistical Consultants

Grand Rapids, MI 49546

314-489-6097

[www.west-inc.com](http://www.west-inc.com)

**Follow WEST:** [Facebook](#), [Twitter](#), [Linked In](#), [Join our Mailing list](#)

CONFIDENTIALITY NOTICE: This message and any accompanying communications are covered by the Electronic Communications Privacy Act, 18 U.S.C. §§ 2510-2521, and contain information that is privileged, confidential or otherwise protected from disclosure. If you are not the intended recipient or an agent responsible for delivering the communication to the intended recipient, you are hereby notified that you have received this communication in error. Dissemination, distribution or copying of this e-mail or the information herein by anyone other than the intended recipient, or an employee or agent responsible for delivering the message to the intended recipient, is prohibited. If you have received this communication in error, please notify us immediately by e-mail and delete the original message. Thank you.

 Please consider the environment before printing.

On Fri, Dec 14, 2018 at 1:19 PM Meyer, Hilary <[Hilary.Meyer@state.sd.us](mailto:Hilary.Meyer@state.sd.us)> wrote:

Hi Chris-

Silka forwarded your e-mail on to me. It looks like Travis Runia (Senior Upland Game Biologist) and myself are free most of next week. Here is what we have open (all times are Central Time Zone):

Monday 12/17- 1p-5p

Tuesday 12/18- 2:30p-5p

Thursday 12/20- 8a-12p 1p-5p

Friday 12/21- 8a-12p

Let us know when you'd like to schedule a call. I've cc'ed Travis on this e-mail so you have his contact information.

**Hilary Meyer** | Environmental Review Senior Biologist

South Dakota Game, Fish and Parks

523 East Capitol Avenue | Pierre, SD 57501

605.773.6208 | [Hilary.Meyer@state.sd.us](mailto:Hilary.Meyer@state.sd.us)

**Error! Filename not specified.Error! Filename not specified.**

## Pat Landess

---

**From:** Chris Fritchman <cfritchman@west-inc.com>  
**Sent:** Friday, February 15, 2019 6:52 AM  
**To:** Mark Wengierski; Pat Landess  
**Subject:** Fwd: WEST TE234121-9 Region 6 reporting  
**Attachments:** 2018\_USFWS\_Region6\_transmittal letter\_no activity.docx; Sweetland Bat Summer Presence Absence\_11142018.pdf; WEST\_Inc\_Region\_6\_2018.xlsx

Hey Guys,

See below and attached regarding the submittal of the Sweetland NLEB presence/absence data to the USFWS. I wanted to forward this along for Scout's records. Let me know if you have any questions.

Thanks,

**Chris Fritchman**  
**Wildlife Biologist**



Western EcoSystems Technology, Inc.  
Environmental & Statistical Consultants  
Grand Rapids, MI 49546  
314-489-6097  
[www.west-inc.com](http://www.west-inc.com)

**Follow WEST:** [Facebook](#), [Twitter](#), [Linked In](#), [Join our Mailing list](#)

CONFIDENTIALITY NOTICE: This message and any accompanying communications are covered by the Electronic Communications Privacy Act, 18 U.S.C. §§ 2510-2521, and contain information that is privileged, confidential or otherwise protected from disclosure. If you are not the intended recipient or an agent responsible for delivering the communication to the intended recipient, you are hereby notified that you have received this communication in error. Dissemination, distribution or copying of this e-mail or the information herein by anyone other than the intended recipient, or an employee or agent responsible for delivering the message to the intended recipient, is prohibited. If you have received this communication in error, please notify us immediately by e-mail and delete the original message. Thank you.



Please consider the environment before printing.

----- Forwarded message -----

**From:** Kristina Hammond <[khammond@west-inc.com](mailto:khammond@west-inc.com)>  
**Date:** Fri, Jan 25, 2019, 10:58 AM  
**Subject:** WEST TE234121-9 Region 6 reporting  
**To:** <[permitsR6ES@fws.gov](mailto:permitsR6ES@fws.gov)>  
**Cc:** Pruitt, Lori <[Lori\\_pruitt@fws.gov](mailto:Lori_pruitt@fws.gov)>, <[jill\\_utrup@fws.gov](mailto:jill_utrup@fws.gov)>

To Whom It May Concern,

Western EcoSystems Technology, Inc. (WEST) appreciates the opportunity to provide the U.S. Fish and Wildlife Service – Mountain-Prairie Region 6 with our Native Endangered and Threatened Species Recovery permit report for surveys conducted in 2018. WEST conducted no activity mist-net activity but have attached the USFWS spreadsheet with one acoustic project we conducted in Region 6 in 2018 and fulfils the reporting requirements of our WEST federal endangered and threatened species permit (#TE234121-9).

If you have any questions, please feel free to contact me by phone (307-771-2891) or email ([Khammond@west-inc.com](mailto:Khammond@west-inc.com)) at your convenience. Thank you for your time and consideration.

Sincerely,

**Kristina Hammond-Rendon**  
**Biologist**



Western EcoSystems Technology, Inc.  
Environmental & Statistical Consultants  
415 W. 17th St. Suite 200  
Cheyenne, WY 82001  
(307)771-2891 (Office)  
(802)299-7207 (Cell)

[www.west-inc.com](http://www.west-inc.com)

**Follow WEST:** [Facebook](#), [Twitter](#), [Linked In](#), [Join our Mailing list](#)

CONFIDENTIALITY NOTICE: This message and any accompanying communications are covered by the Electronic Communications Privacy Act, 18 U.S.C. §§ 2510-2521, and contain information that is privileged, confidential or otherwise protected from disclosure. If you are not the intended recipient or an agent responsible for delivering the communication to the intended recipient, you are hereby notified that you have received this communication in error. Dissemination, distribution or copying of this e-mail or the information herein by anyone other than the intended recipient, or an employee or agent responsible for delivering the message to the intended recipient, is prohibited. If you have received this communication in error, please notify us immediately by e-mail and delete the original message. Thank you.



Please consider the environment before printing.



**ENVIRONMENTAL & STATISTICAL CONSULTANTS**

415 West 17<sup>th</sup> Street, Suite 200 ♦ Cheyenne, WY 82001  
Phone: 307-760-5464 ♦ www.west-inc.com ♦ Fax: 307-721-3815

January 25, 2019

ESA Assistant Recovery Coordinator & Permit Coordinator  
U.S. Fish and Wildlife Service – Mountain-Prairie Region 6  
Endangered Species Permits Office  
Denver Federal Center, P.O. Box 25486  
Denver, Colorado 80225-0489

RE: Transmittal of WEST, Inc. Endangered Species Permit Reports for 2018-No activity

To Whom It May Concern,

Western EcoSystems Technology, Inc. (WEST) appreciates the opportunity to provide the U.S. Fish and Wildlife Service – Mountain-Prairie Region 6 with our Native Endangered and Threatened Species Recovery permit report for surveys conducted in 2018. WEST conducted no activity mist-net activity but have attached the USFWS spreadsheet with one acoustic project we conducted in Region 6 in 2018 and fulfils the reporting requirements of our WEST federal endangered and threatened species permit (#TE234121-9).

If you have any questions, please feel free to contact me by phone (307-771-2891) or email (Khammond@west-inc.com) at your convenience. Thank you for your time and consideration.

Sincerely,

Kristina Hammond  
Biologist  
Western EcoSystems Technology, Inc.



----- Forwarded message -----

From: **Chris Fritchman** <[cfritchman@west-inc.com](mailto:cfritchman@west-inc.com)>

Date: Mon, Feb 25, 2019 at 11:11 PM

Subject: Re: Sweetland Wind Farm

To: Kempema, Silka <[silka.kempema@state.sd.us](mailto:silka.kempema@state.sd.us)>, Meyer, Hilary <[Hilary.Meyer@state.sd.us](mailto:Hilary.Meyer@state.sd.us)>, Runia, Travis <[Travis.Runia@state.sd.us](mailto:Travis.Runia@state.sd.us)>, Gates, Natalie <[natalie\\_gates@fws.gov](mailto:natalie_gates@fws.gov)>

Cc: Mark Wengierski <[mark@scoutcleanenergy.com](mailto:mark@scoutcleanenergy.com)>, Patrick Landess <[pat@scoutcleanenergy.com](mailto:pat@scoutcleanenergy.com)>, Todd Mabee <[tmabee@west-inc.com](mailto:tmabee@west-inc.com)>, Kenton Taylor <[kentontaylor@west-inc.com](mailto:kentontaylor@west-inc.com)>

Reports five, six and seven from the lists are attached here.

Thanks,

**Chris Fritchman**  
**Wildlife Biologist**

Western EcoSystems Technology, Inc.  
Environmental & Statistical Consultants  
Grand Rapids, MI 49546  
314-489-6097  
[www.west-inc.com](http://www.west-inc.com)

**Follow WEST:** [Facebook](#), [Twitter](#), [Linked In](#), [Join our Mailing list](#)

CONFIDENTIALITY NOTICE: This message and any accompanying communications are covered by the Electronic Communications Privacy Act, 18 U.S.C. §§ 2510-2521, and contain information that is privileged, confidential or otherwise protected from disclosure. If you are not the intended recipient or an agent responsible for delivering the communication to the intended recipient, you are hereby notified that you have received this communication in error. Dissemination, distribution or copying of this e-mail or the information herein by anyone other than the intended recipient, or an employee or agent responsible for delivering the message to the intended recipient, is prohibited. If you have received this communication in error, please notify us immediately by e-mail and delete the original message. Thank you.

 Please consider the environment before printing.

On Mon, Feb 25, 2019 at 11:08 PM Chris Fritchman <[cfritchman@west-inc.com](mailto:cfritchman@west-inc.com)> wrote:

Reports three and four from the list are attached here.

Thanks,

**Chris Fritchman**  
**Wildlife Biologist**

Western EcoSystems Technology, Inc.  
Environmental & Statistical Consultants  
Grand Rapids, MI 49546  
314-489-6097

[www.west-inc.com](http://www.west-inc.com)

**Follow WEST:** [Facebook](#), [Twitter](#), [Linked In](#), [Join our Mailing list](#)

CONFIDENTIALITY NOTICE: This message and any accompanying communications are covered by the Electronic Communications Privacy Act, 18 U.S.C. §§ 2510-2521, and contain information that is privileged, confidential or otherwise protected from disclosure. If you are not the intended recipient or an agent responsible for delivering the communication to the intended recipient, you are hereby notified that you have received this communication in error. Dissemination, distribution or copying of this e-mail or the information herein by anyone other than the intended recipient, or an employee or agent responsible for delivering the message to the intended recipient, is prohibited. If you have received this communication in error, please notify us immediately by e-mail and delete the original message. Thank you.

 Please consider the environment before printing.

On Mon, Feb 25, 2019 at 11:03 PM Chris Fritchman <[cfritchman@west-inc.com](mailto:cfritchman@west-inc.com)> wrote:

Good Evening,

My emails to SDGFP personnel came back as undeliverable due to the file size exceeding 20MB. As such I am forwarding the originals email(s) below, and will attach the reports (listed below in the original email) in a series of emails so as to not exceed the 20 MB limit. The first two reports from the list are attached here.

Please let us know if you have any questions, comments or concerns. Thanks!

Thanks,

**Chris Fritchman**  
**Wildlife Biologist**

Western EcoSystems Technology, Inc.  
Environmental & Statistical Consultants  
Grand Rapids, MI 49546  
314-489-6097  
[www.west-inc.com](http://www.west-inc.com)

**Follow WEST:** [Facebook](#), [Twitter](#), [Linked In](#), [Join our Mailing list](#)

CONFIDENTIALITY NOTICE: This message and any accompanying communications are covered by the Electronic Communications Privacy Act, 18 U.S.C. §§ 2510-2521, and contain information that is privileged, confidential or otherwise protected from disclosure. If you are not the intended recipient or an agent responsible for delivering the communication to the intended recipient, you are hereby notified that you have received this communication in error. Dissemination, distribution or copying of this e-mail or the information herein by anyone other than the intended recipient, or an employee or agent responsible for delivering the message to the intended recipient, is prohibited. If you have received this communication in error, please notify us immediately by e-mail and delete the original message. Thank you.

 Please consider the environment before printing.

----- Forwarded message -----

From: **Chris Fritchman** <[cfritchman@west-inc.com](mailto:cfritchman@west-inc.com)>

Date: Mon, Feb 25, 2019 at 10:42 PM

Subject: Re: Sweetland Wind Farm

To: Gates, Natalie <[natalie\\_gates@fws.gov](mailto:natalie_gates@fws.gov)>, Kempema, Silka <[silka.kempema@state.sd.us](mailto:silka.kempema@state.sd.us)>, Meyer, Hilary <[Hilary.Meyer@state.sd.us](mailto:Hilary.Meyer@state.sd.us)>, Runia, Travis <[Travis.Runia@state.sd.us](mailto:Travis.Runia@state.sd.us)>

Cc: Mark Wengierski <[mark@scoutcleanenergy.com](mailto:mark@scoutcleanenergy.com)>, Patrick Landess <[pat@scoutcleanenergy.com](mailto:pat@scoutcleanenergy.com)>, Kenton Taylor <[kentontaylor@west-inc.com](mailto:kentontaylor@west-inc.com)>, Todd Mabee <[tmabee@west-inc.com](mailto:tmabee@west-inc.com)>

The four remaining reports are attached here.

Please let us know if you have any questions, comments or concerns. Thanks!

Thanks,

**Chris Fritchman**  
**Wildlife Biologist**

Western EcoSystems Technology, Inc.  
Environmental & Statistical Consultants  
Grand Rapids, MI 49546  
314-489-6097  
[www.west-inc.com](http://www.west-inc.com)

**Follow WEST:** [Facebook](#), [Twitter](#), [Linked In](#), [Join our Mailing list](#)

CONFIDENTIALITY NOTICE: This message and any accompanying communications are covered by the Electronic Communications Privacy Act, 18 U.S.C. §§ 2510-2521, and contain information that is privileged, confidential or otherwise protected from disclosure. If you are not the intended recipient or an agent responsible for delivering the communication to the intended recipient, you are hereby notified that you have received this communication in error. Dissemination, distribution or copying of this e-mail or the information herein by anyone other than the intended recipient, or an employee or agent responsible for delivering the message to the intended recipient, is prohibited. If you have received this communication in error, please notify us immediately by e-mail and delete the original message. Thank you.



Please consider the environment before printing.

On Mon, Feb 25, 2019 at 10:38 PM Chris Fritchman <[cfritchman@west-inc.com](mailto:cfritchman@west-inc.com)> wrote:

Good Evening,

At the request of Sweetland Wind Farm LLC, please find attached copies of reports (list included below) completed to date for the Sweetland Wind Farm located in Hand County, SD. Due to the size of the files the first three reports on the list below are attached to this email. I'll send the remaining four reports in a separate email.

The second year of avian/eagle use surveys are currently ongoing. Additionally WEST will complete the second year of prairie grouse surveys this spring as well.

### **Reports**

- First Year Baseline Avian Studies Report

- Whooping Crane Stop-Over Habitat Assessment
- Sweetland Grassland Assessment
- 2018 Raptor Nest Survey Report (the 2017 Raptor Nest Survey report was previously sent on 9/11/17 but is also attached here for convenience)
- 2017 Acoustic Bat Activity Report
- 2018 Acoustic Bat Activity Report

Please let us know if you have any questions, comments or concerns. Thanks!

Thanks,

**Chris Fritchman**  
**Wildlife Biologist**

Western EcoSystems Technology, Inc.  
Environmental & Statistical Consultants  
Grand Rapids, MI 49546  
314-489-6097  
[www.west-inc.com](http://www.west-inc.com)

**Follow WEST:** [Facebook](#), [Twitter](#), [Linked In](#), [Join our Mailing list](#)

CONFIDENTIALITY NOTICE: This message and any accompanying communications are covered by the Electronic Communications Privacy Act, 18 U.S.C. §§ 2510-2521, and contain information that is privileged, confidential or otherwise protected from disclosure. If you are not the intended recipient or an agent responsible for delivering the communication to the intended recipient, you are hereby notified that you have received this communication in error. Dissemination, distribution or copying of this e-mail or the information herein by anyone other than the intended recipient, or an employee or agent responsible for delivering the message to the intended recipient, is prohibited. If you have received this communication in error, please notify us immediately by e-mail and delete the original message. Thank you.

 Please consider the environment before printing.

**USDA**

Correspondence

**From:** Mark Wengierski

**Sent:** Friday, February 22, 2019 10:20 AM

**To:** 'Brandon.Kottke@sd.usda.gov' <[Brandon.Kottke@sd.usda.gov](mailto:Brandon.Kottke@sd.usda.gov)>

**Subject:** Sweetland Wind Farm-- Harvey, Major et al. Grassland Reserve Program Conservation Easement

Brandon,

Thanks again for taking the time to discuss the Grassland Reserve Program Conservation Easement (Conservation Easement) on the Harvey, Major et al. property (portions of S1-T111N-R67W and S6-T111N-R66W, Hand County, SD). Sweetland Wind Farm, LLC (Sweetland) executed a Wind Energy Lease and Easement Agreement (Wind Lease) with Harvey, Major et al. in August of 2017. Unfortunately the Conservation Easement was not identified in the title work or by the landowner.

Sweetland has not installed any infrastructure or caused any ground disturbance on the property. As part of the WAPA EA and PUC Application process Sweetland conducted pedestrian wetland and cultural field surveys on the property (fall- 2018). Sweetland desires to work with the landowner and the NRCS to reach a mutually beneficial use of the property which could potentially lead to the installation of wind facilities.

As we discussed, with the pending release of the new Farm Bill and the likely changes to the process to address wind facilities installation on the Conservation Easement we will hold off on initiating the process. Thanks again for your time, and for reference I'm attaching a plat of the property indicating the location of the preliminary, proposed wind facilities.

**Mark Wengierski**

Scout Clean Energy | Project Manager

4865 Sterling Drive, Suite 200 | Boulder, CO 80301

C: (832) 646-7730 | O: (720) 592-0512



[www.scoutcleanenergy.com](http://www.scoutcleanenergy.com)

# **Hand County Director of Equalization**

Correspondence



**From:** Hand County Director Of Equalization <assessor.handcoem@midconetwork.com>  
**Sent:** Wednesday, October 03, 2018 10:49 AM  
**To:** Mark Wengierski  
**Subject:** RE: Hand County Flood Plain Map

I am the Flood Plain Manager, also. I have been told by the state that Hand County has no areas in a flood plain (other than a little area in both the cities of Miller and St Lawrence. So, I don't know if there is a map – showing nothing?  
Let me know if we need to find out any more info. Terry

---

**From:** Mark Wengierski [<mailto:mark@scoutcleanenergy.com>]  
**Sent:** Wednesday, October 03, 2018 9:38 AM  
**To:** Terry Augspurger  
**Cc:** Pat Landess  
**Subject:** Hand County Flood Plain Map

Terry,

We're trying to locate a FEMA floodplain map for Hand County (specifically for the area encompassing our project), might you know if FEMA has ever created floodplain maps for Hand County... or someone that might know? Thanks.

**Mark Wengierski**  
Scout Clean Energy | Project Manager  
2919 Valmont Road, Suite 209 | Boulder, CO 80301  
C: (832) 646-7730 | O: (720) 592-0512



[www.scoutcleanenergy.com](http://www.scoutcleanenergy.com)