

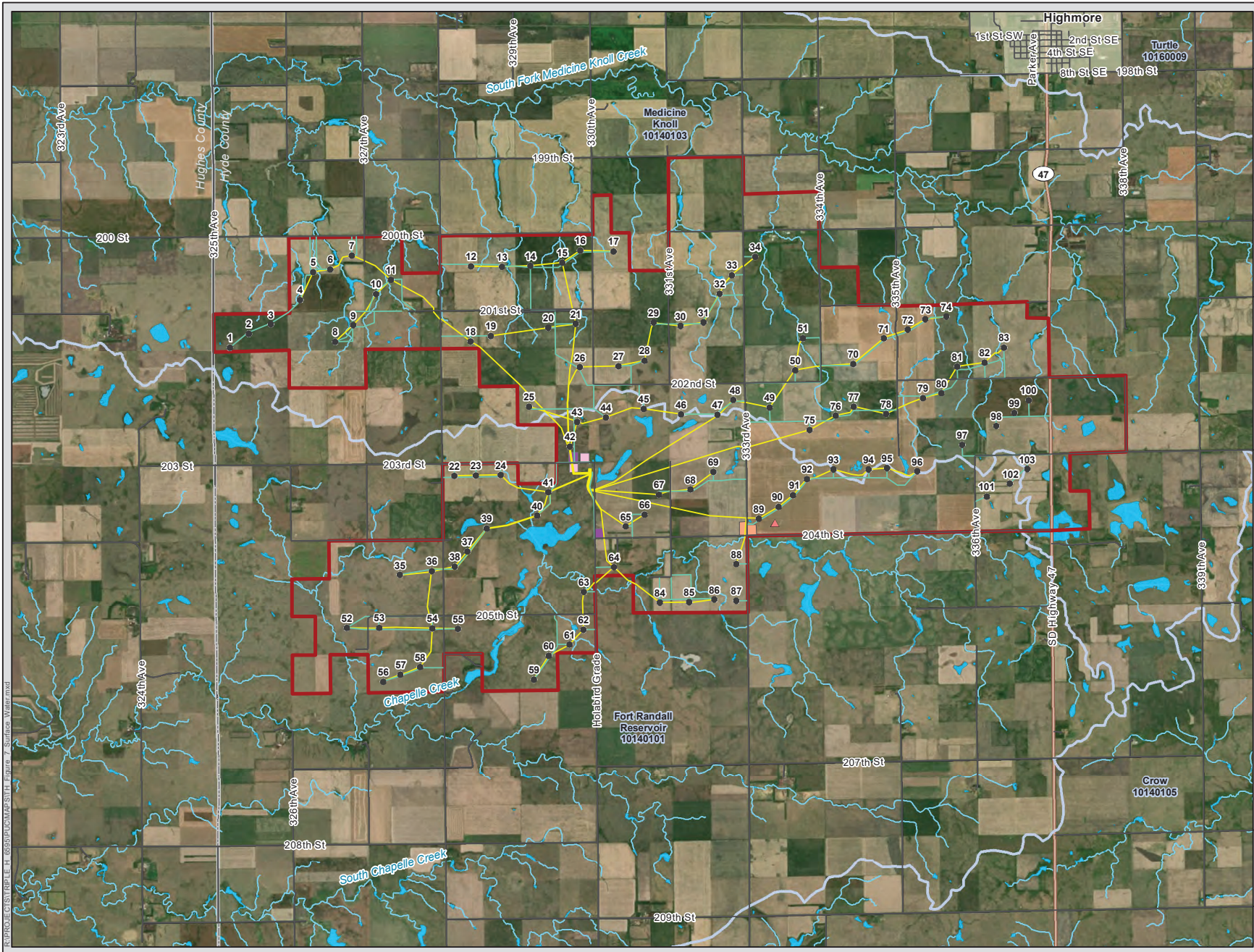
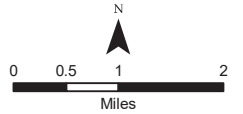


Triple H Wind Project

Figure 7 Surface Water Resources

Hyde County, South Dakota

- Project Area
- Proposed Turbine
- Potential Permanent MET Tower Location
- Proposed Access Road
- Proposed Collector Line
- Potential Collection Substation Location
- Potential Interconnection Switching Station Location
- Potential Laydown Area Location
- Municipal Boundary
- County Boundary
- State Highway
- Local Road
- NHD Intermittent Stream
- NHD Waterbody
- HUC8 Subbasin Boundary



R:\PROJECTS\Triple H_6555\FIGURES\FIG 7 - Surface Water.mxd