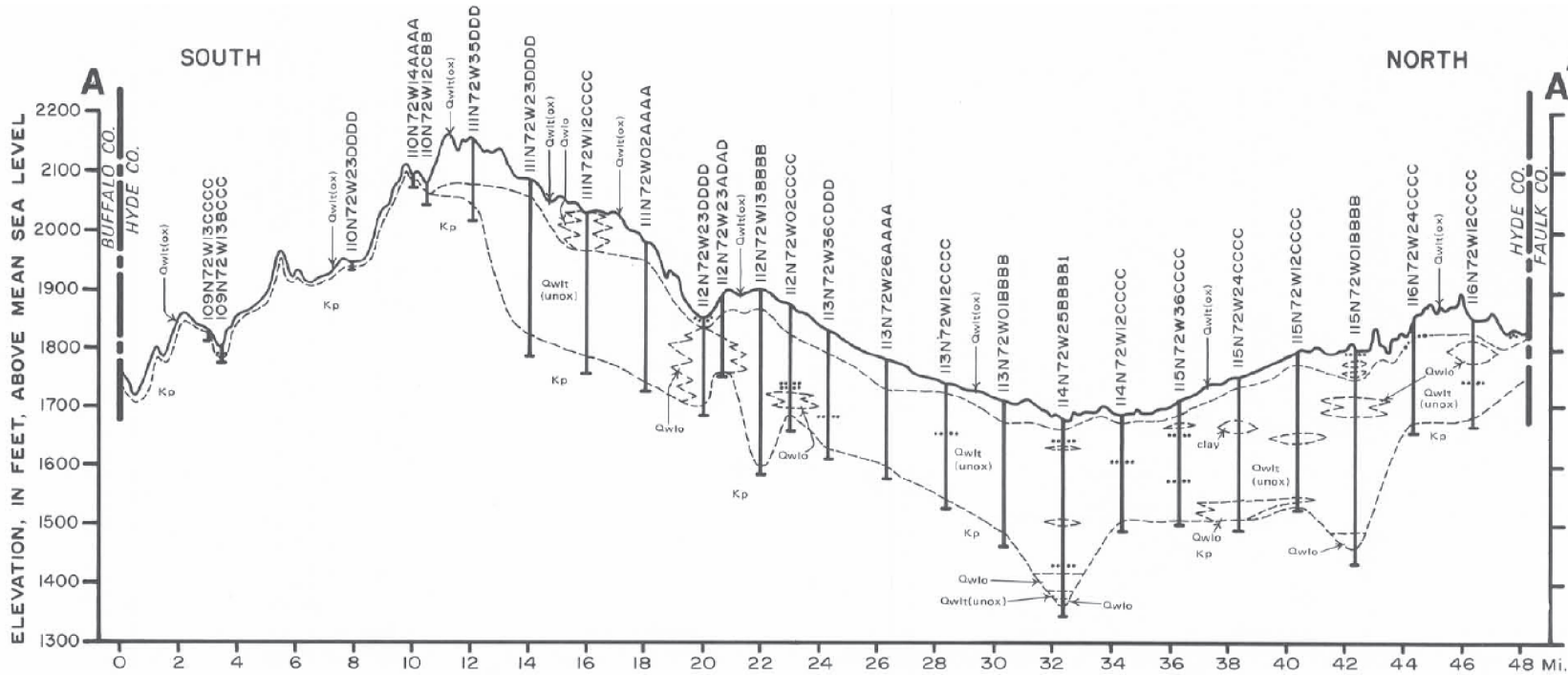




Triple H Wind Project

Figure 4b  
South Dakota Geological Survey  
Stratigraphic Cross Section A-A'

Hyde County, South Dakota



EXPLANATION

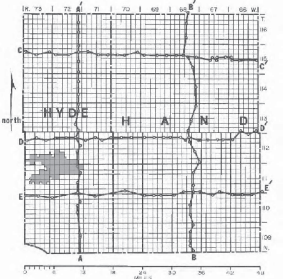
Qwt	Qwt... alluvium
Qwt(ox)	Qwt... oxidized
Qwt(unox)	Qwt... fill, oxidized
Qwt(unox)	Qwt... fill, unoxidized
Kp	Pierre Shale
Kn	Niobrara Formation

--- Sand and gravel layers less than 0 feet and greater than 1 foot thick.

--- Approximate geologic contact.

--- Logs of all test holes are available in open file at South Dakota Geological Survey.

↓ Well Vertical exaggeration 100x



Inset map of Hyde and Faulk Counties showing location of stratigraphic section.



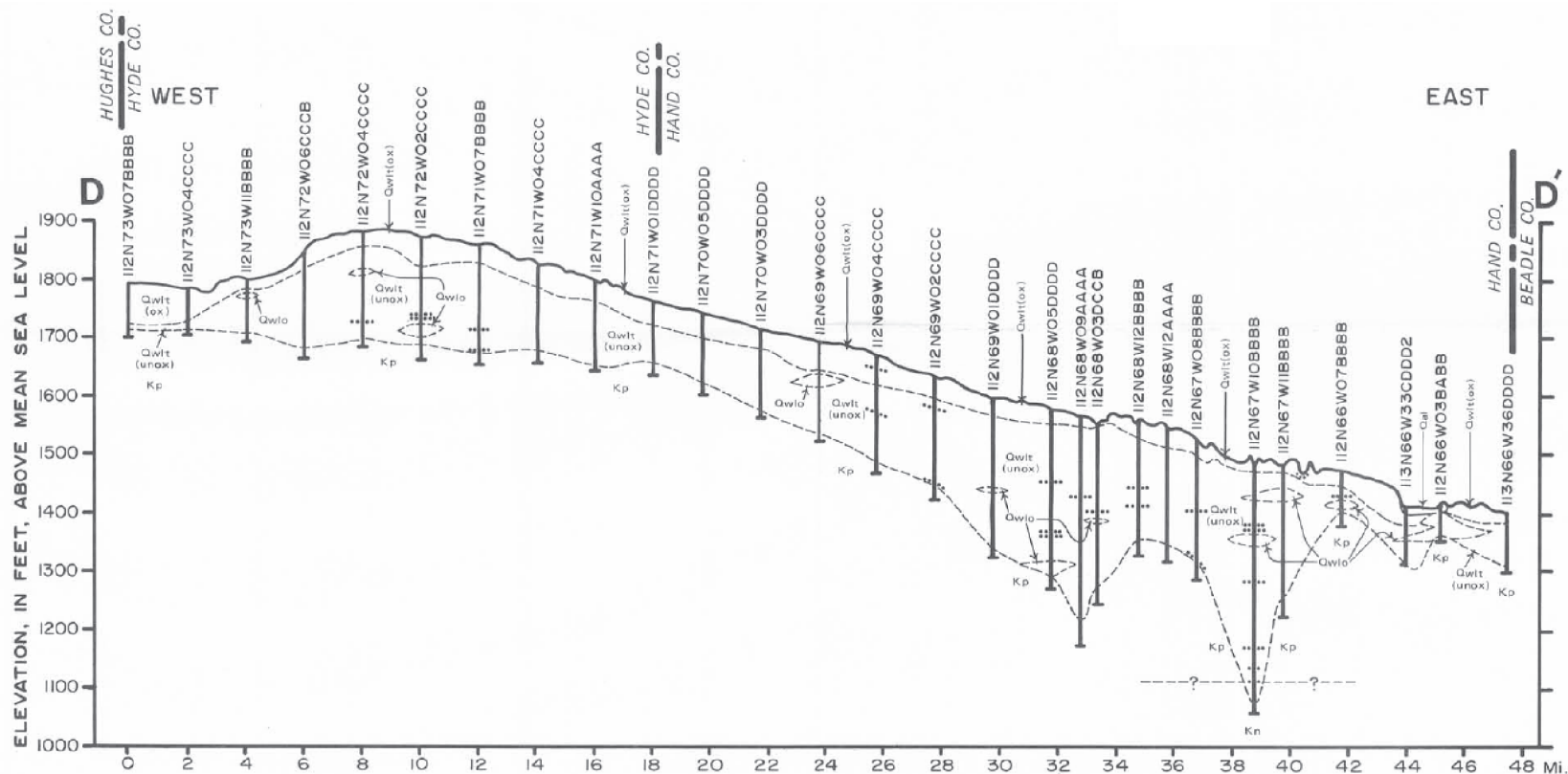
S:\PROJECTS\TRIPLE H 6555\FIGURES\STRAT A-A'.indd



### Triple H Wind Project

#### Figure 4c South Dakota Geological Survey Stratigraphic Cross Section D-D'

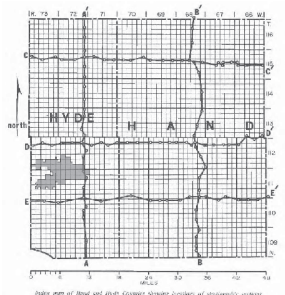
Hyde County, South Dakota



**EXPLANATION**

Qwit... alluvium  
 Qwlo... outwash  
 Qwit(ox)... fill, oxidized  
 Qwit(unox)... fill, unoxidized  
 Kp... Pierre Shale  
 Kn... Niobrara Formation

--- Sand and gravel layers less than 0 feet and greater than 1 foot thick.  
 - - - - - Approximate geologic contact.  
 | Well  
 Vertical exaggeration 100x



State map of South Dakota showing location of stratigraphic section.



R:\PROJECTS\TRIPLE H\_6655\FIGMAPS\STRAT\_SECTION\_D-D'.ind