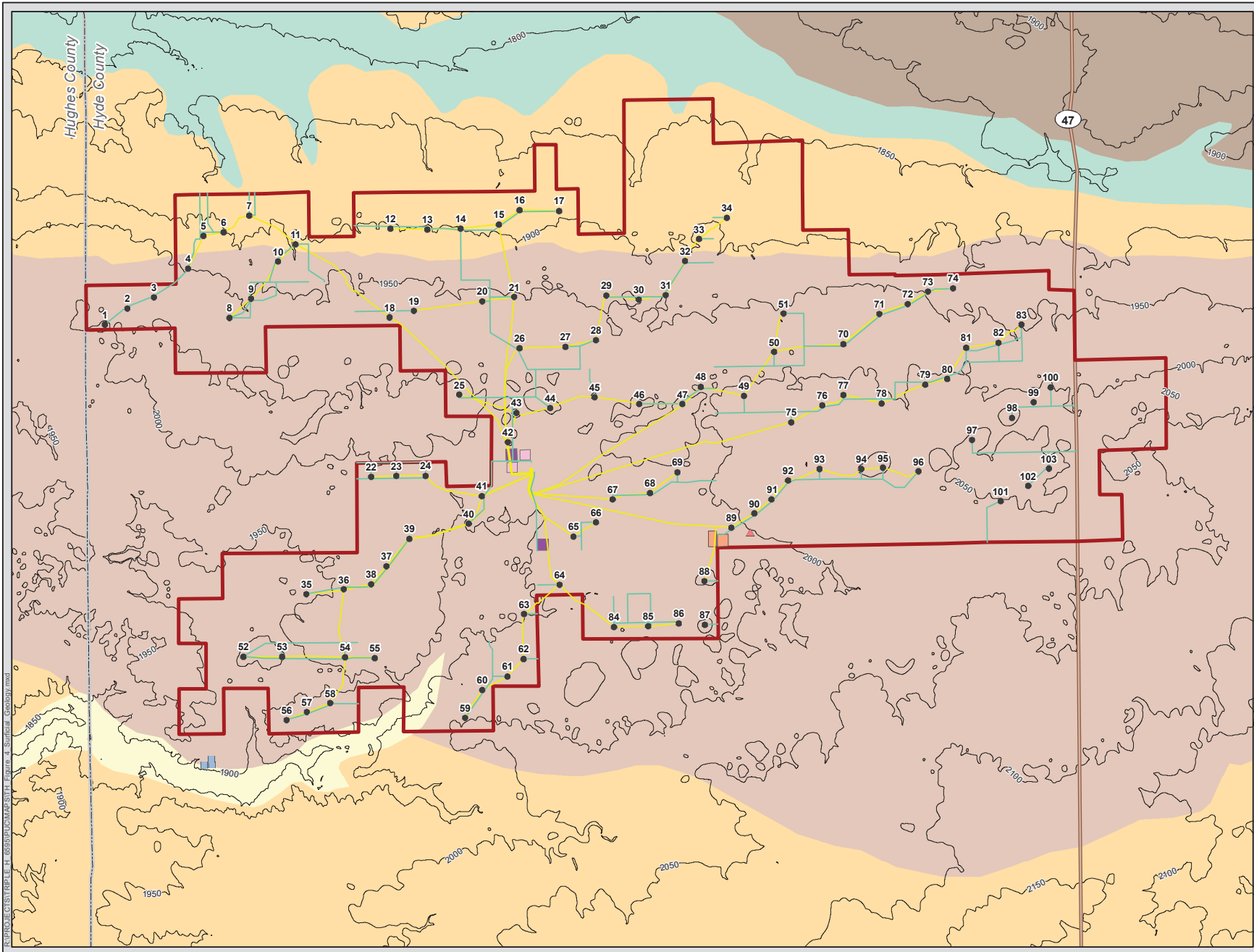




Triple H Wind Project

Figure 4a Surficial Geology

Hyde County, South Dakota



- Project Area
- Proposed Turbine
- Potential Permanent MET Tower Location
- Proposed Access Road
- Proposed Collector Line
- Potential Collection Substation Location
- Potential Interconnection Switching Station Location
- Potential Laydown Area Location
- County Boundary
- State Highway
- Active Sand & Gravel Operation
- Qal - Alluvium
- Qlov - Outwash, Valley Train
- Qlte - Till, End Moraine
- Qltg - Till, Ground Moraine
- Qlts - Till, Stagnation Moraine
- 50-foot Elevation Contours



R:\PROJECTS\Triple H 6655\CD\MAPS\TH Figure 4 Surficial Geology.mxd