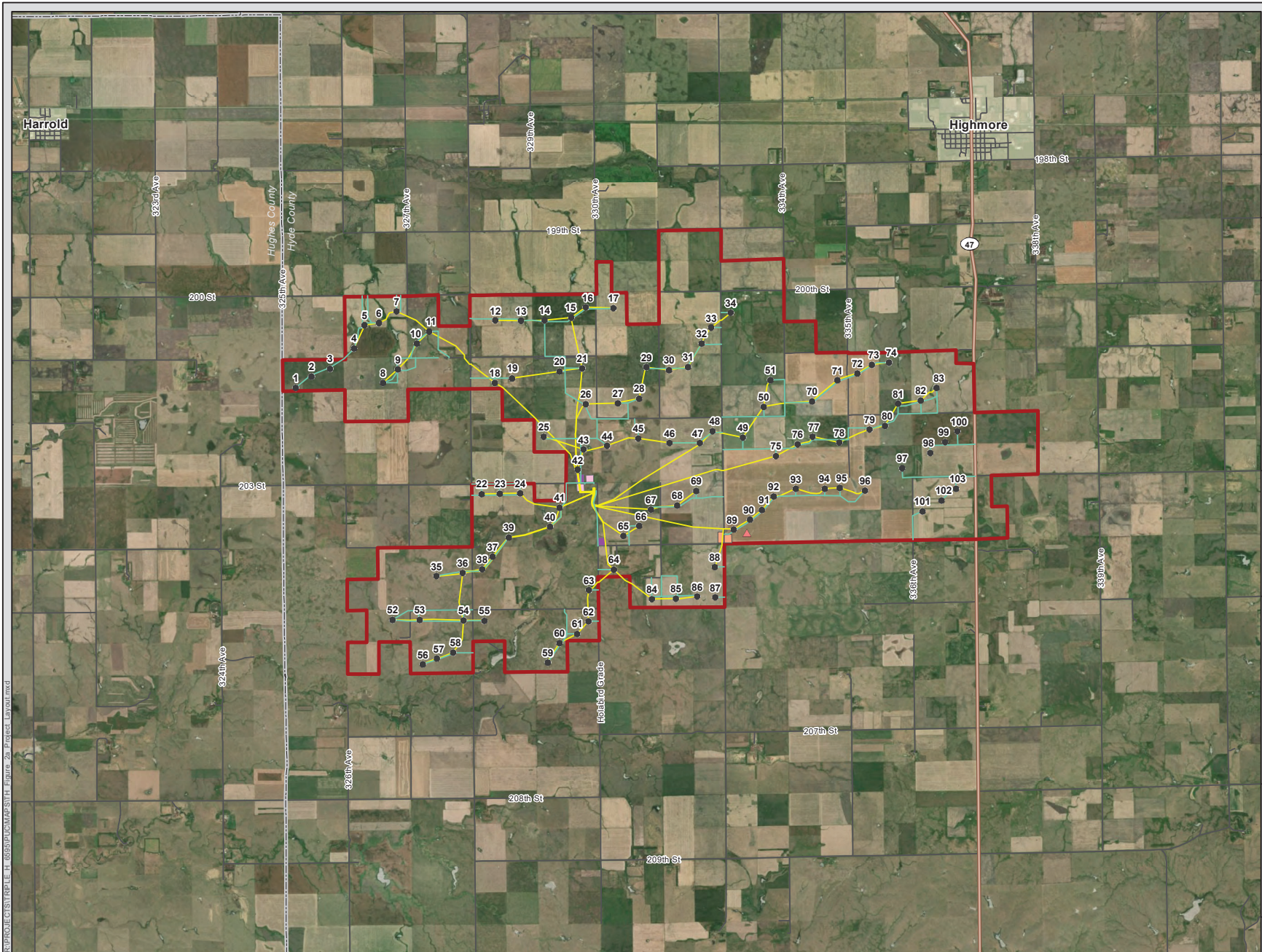




# Triple H Wind Project

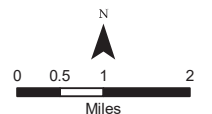
## Figure 2a Preliminary Project Layout

Hyde County, South Dakota



- Project Area
- Proposed Turbine
- Potential Permanent MET Tower Location
- Proposed Access Road
- Proposed Collector Line
- Potential Collection Substation Location
- Potential Interconnection Switching Station Location
- Potential Laydown Area Location
- Municipal Boundary
- County Boundary
- State Highway
- Local Road

The O&M facility will be located within the Project Area, but the location has not yet been finalized.



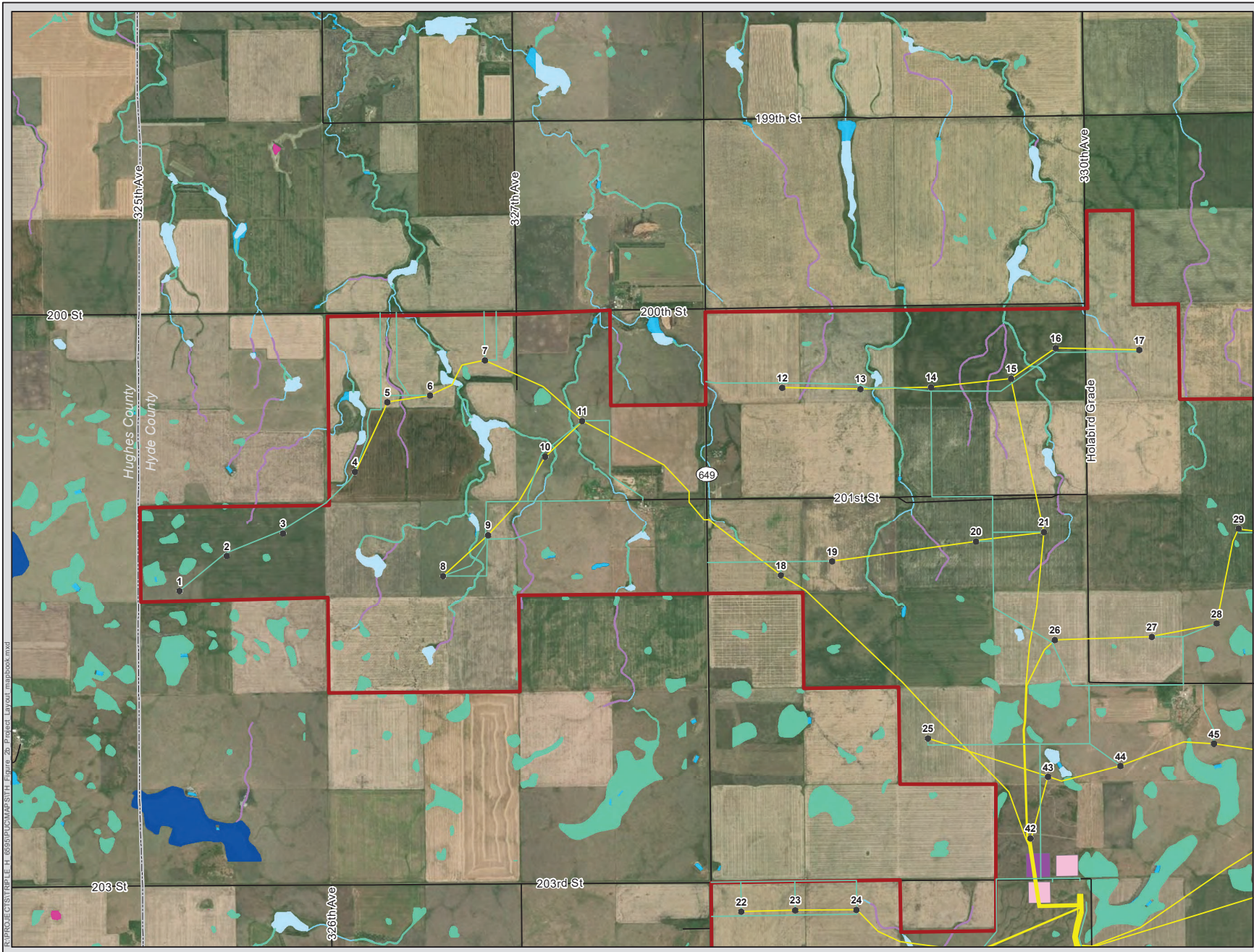
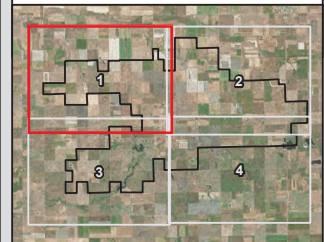
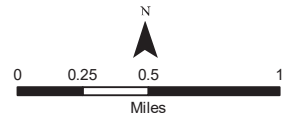
R:\PROJECTS\TRIPLE H\_6595\FIGURES\WITH ENRIS\_2a Project Layout.mxd



Triple H Wind Project  
Figure 2b  
Preliminary Project Layout  
Sheet 1 of 4

Hyde County, South Dakota

- Project Area
- Proposed Turbine
- Potential Permanent MET Tower Location
- Proposed Access Road
- Proposed Collector Line
- Potential Collection Substation Location
- Potential Interconnection Switching Station Location
- Potential Laydown Area Location
- County Boundary
- State Highway
- Local Road
- NHD Intermittent Stream
- NHD Waterbody
- NWI Wetland Type**
  - Freshwater Emergent Wetland
  - Freshwater Pond
  - Lake
  - Riverine
  - Digitized (West)



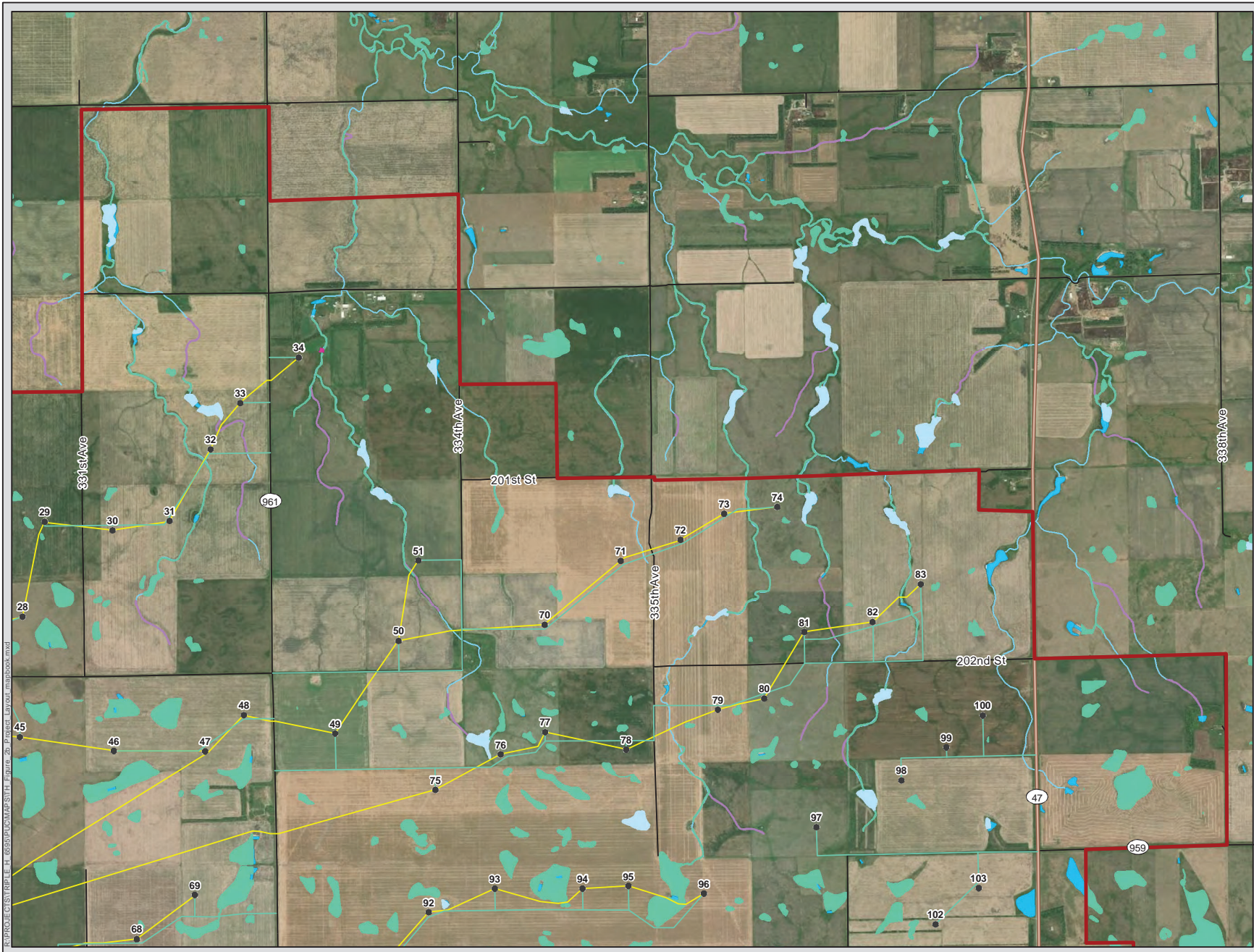
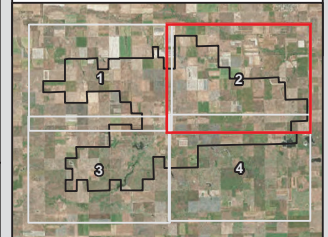
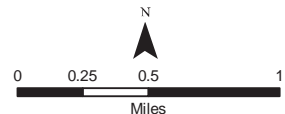
R:\PROJECTS\TRIPLE H\_6555\FIGURES\WITH ENRIS\_2b\_Prelim Layout\_08052024.mxd



Triple H Wind Project  
Figure 2b  
Preliminary Project Layout  
Sheet 2 of 4

Hyde County, South Dakota

- Project Area
- Proposed Turbine
- Potential Permanent MET Tower Location
- Proposed Access Road
- Proposed Collector Line
- Potential Collection Substation Location
- Potential Interconnection Switching Station Location
- Potential Laydown Area Location
- County Boundary
- State Highway
- Local Road
- NHD Intermittent Stream
- NHD Waterbody
- NWI Wetland Type
  - Freshwater Emergent Wetland
  - Freshwater Pond
  - Lake
  - Riverine
  - Digitized (West)



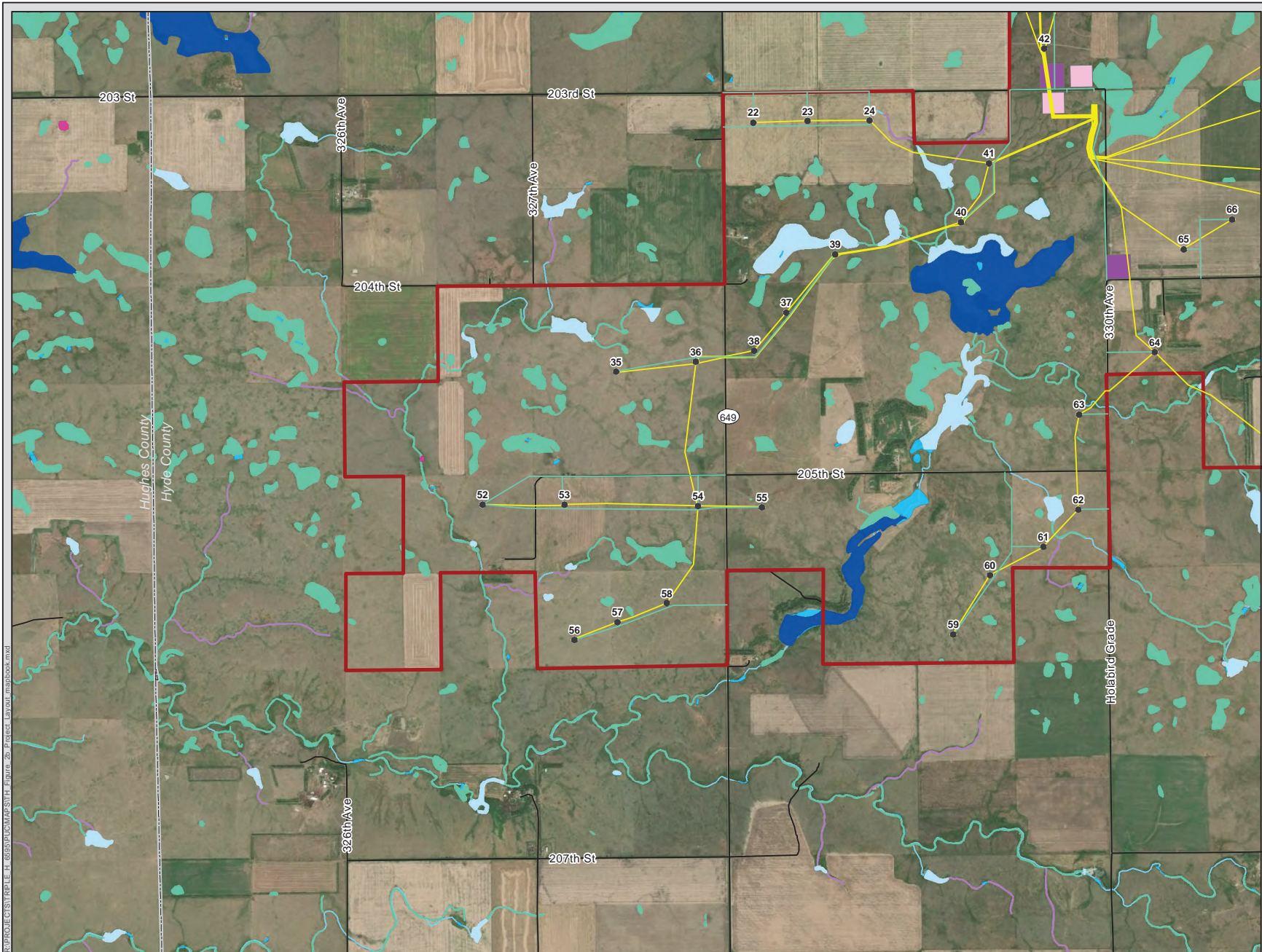
R:\PROJECTS\TRIPLE H\_6555\FIGMAPS\WITH\_BORDER\_2b\_Prelim\_Layout\_08202020.dwg



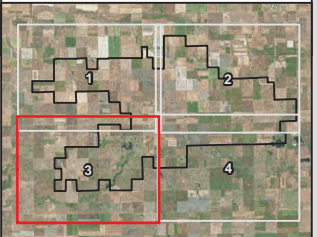
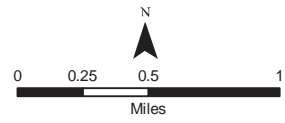
### Triple H Wind Project

Figure 2b  
Preliminary Project Layout  
Sheet 3 of 4

Hyde County, South Dakota



- Project Area
- Proposed Turbine
- Potential Permanent MET Tower Location
- Proposed Access Road
- Proposed Collector Line
- Potential Collection Substation Location
- Potential Interconnection Switching Station Location
- Potential Laydown Area Location
- County Boundary
- State Highway
- Local Road
- NHD Intermittent Stream
- NHD Waterbody
- NWI Wetland Type**
- Freshwater Emergent Wetland
- Freshwater Pond
- Lake
- Riverine
- Digitized (West)



R:\PROJECTS\TRIPLE H\_6555\LOCATIONS\TH\_FIGURE\_2b\_PRELIM\_LAYOUT\_03052024.DWG

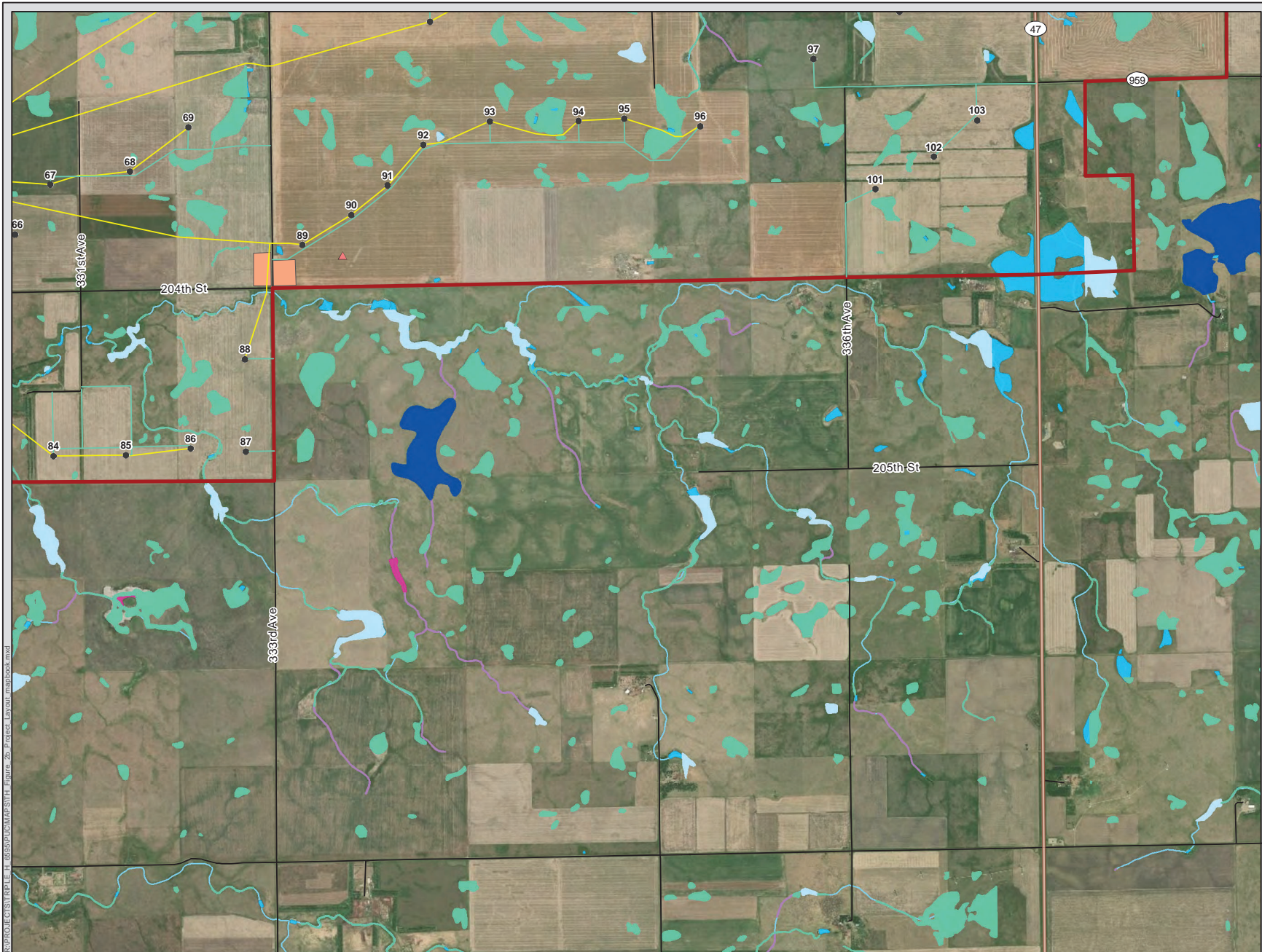
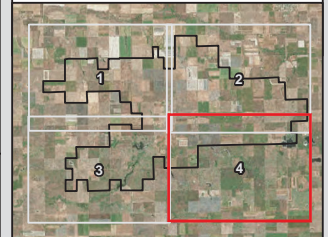
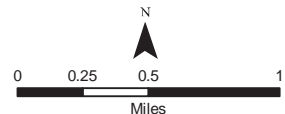


### Triple H Wind Project

#### Figure 2b Preliminary Project Layout Sheet 4 of 4

Hyde County, South Dakota

- Project Area
- Proposed Turbine
- Potential Permanent MET Tower Location
- Proposed Access Road
- Proposed Collector Line
- Potential Collection Substation Location
- Potential Interconnection Switching Station Location
- Potential Laydown Area Location
- County Boundary
- State Highway
- Local Road
- NHD Intermittent Stream
- NHD Waterbody
- NWI Wetland Type**
  - Freshwater Emergent Wetland
  - Freshwater Pond
  - Lake
  - Riverine
  - Digitized (West)



R:\PROJECTS\TRIPLE H\6595\FIGURES\WITH FIGURES 2b\_Prelim Layout\3333000000.dwg

