

Data Source(s): Westwood (2021).

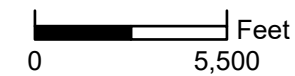
Legend

- Turbines
- MET Tower
- As-Built Fence Line
- As-Built Access Road
- As-Built Collection
- Project Boundary
- Setback from participating (OH plus 20m)
- 1.1x Tip Height from Non Participant Setback
- Microwave Beam Path Setback (233')
- Stream Setback (100')
- Waterbody Setback (100')
- Wetlands Setback (250')
- Project Boundary Setback (500')
- Substation Setback (566')
- Existing Transmission Setback (634')
- Section Line Setback (750')
- Road Setback (750')
- Highway Setback (750')
- Hyde County Dwelling Setback (1400')
- Northern Long Eared Bat Habitat Setback (1000')
- Map Series Index

Westwood

Phone (952) 937-5150 12701 Whitewater Drive, Suite #300
Fax (952) 937-5822 Minnetonka, MN 55343
Toll Free (888) 937-5150 westwoodps.com

Westwood Professional Services, Inc.



Triple H Wind Farm

Hyde County, SD

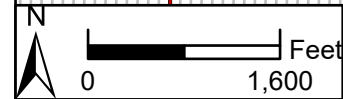
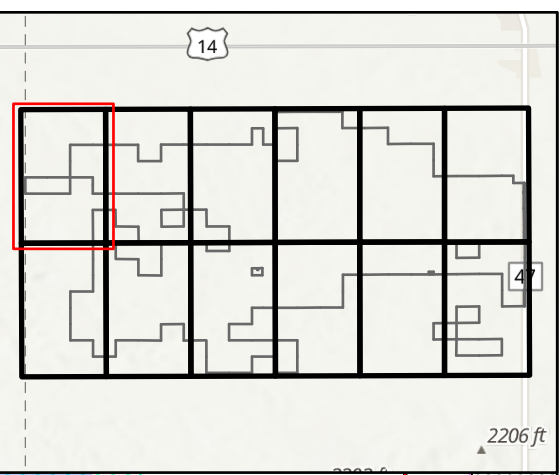
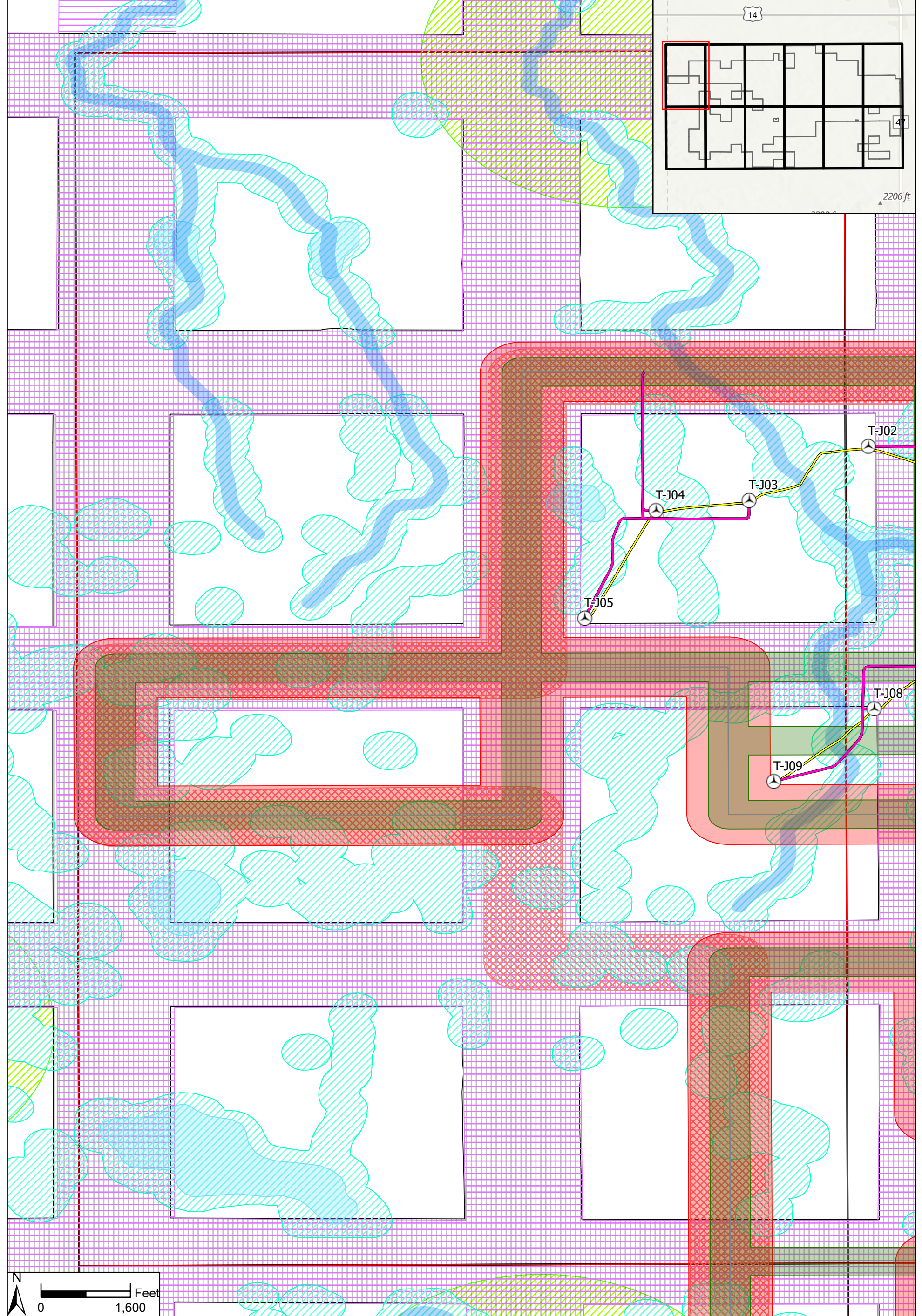
As-Built Setback Exhibit

Page Name: Overall

Page # 1

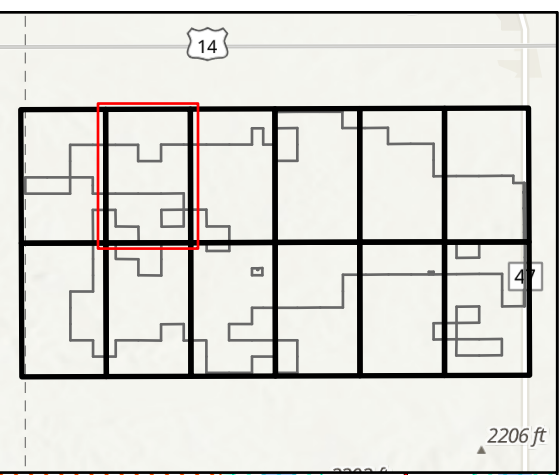
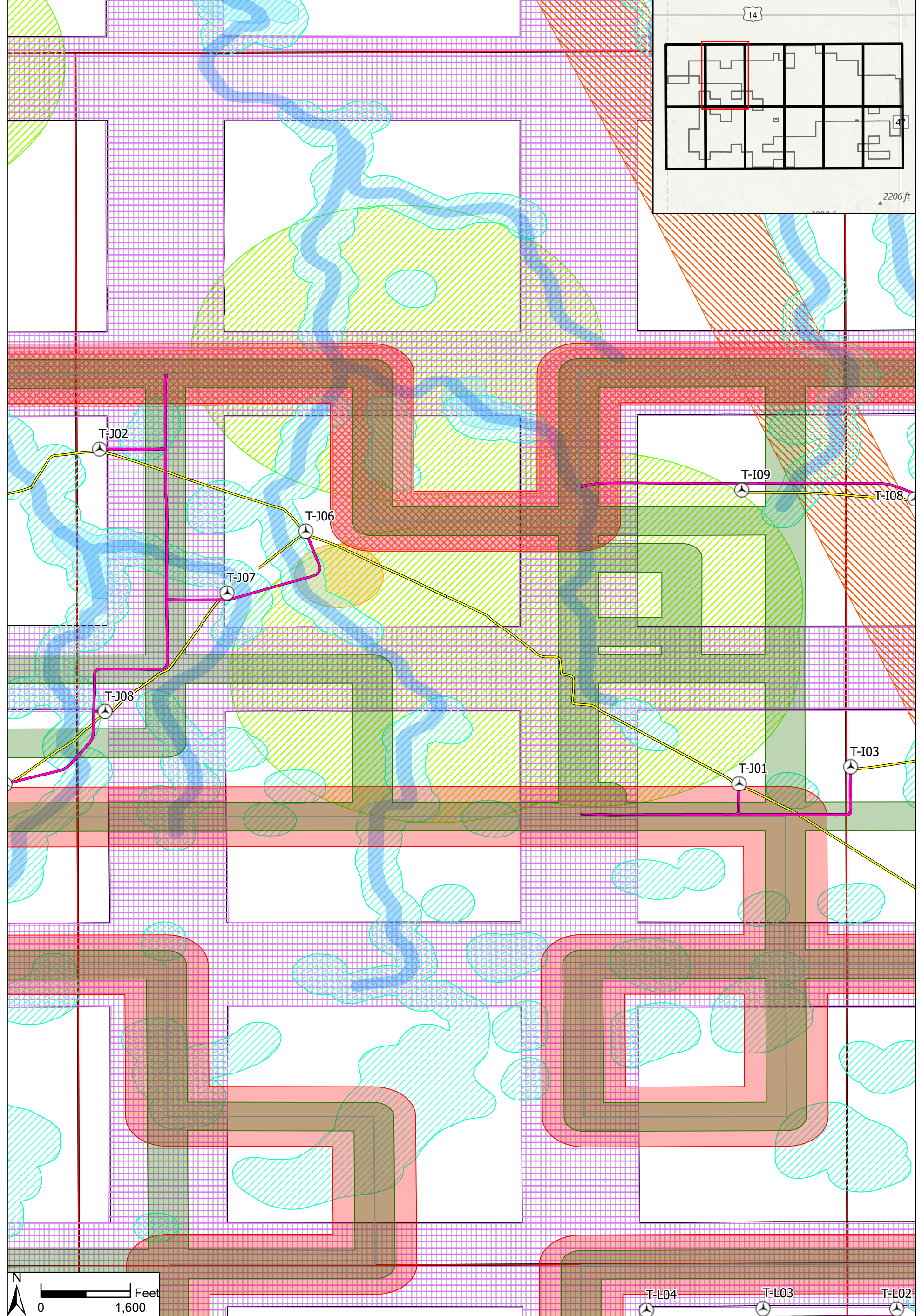
February 4, 2021

N:\002226-00\GIS\ArcPro\002226_TripH_Exhibits\002226_TripH_Exhibits_Copy.aprx
Triple H Setback Exhibit Overview Landscape - TripH Setback Overall 2/4/2021 11:38 AM ILESensoren



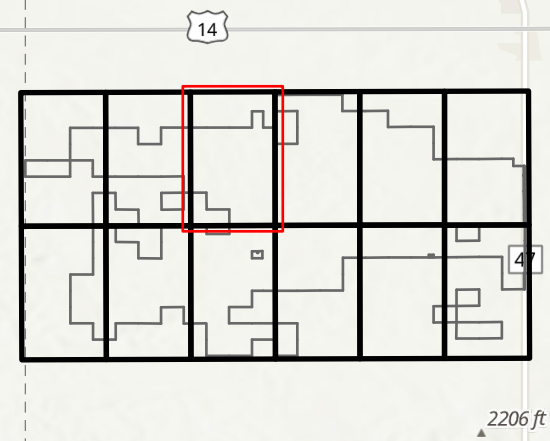
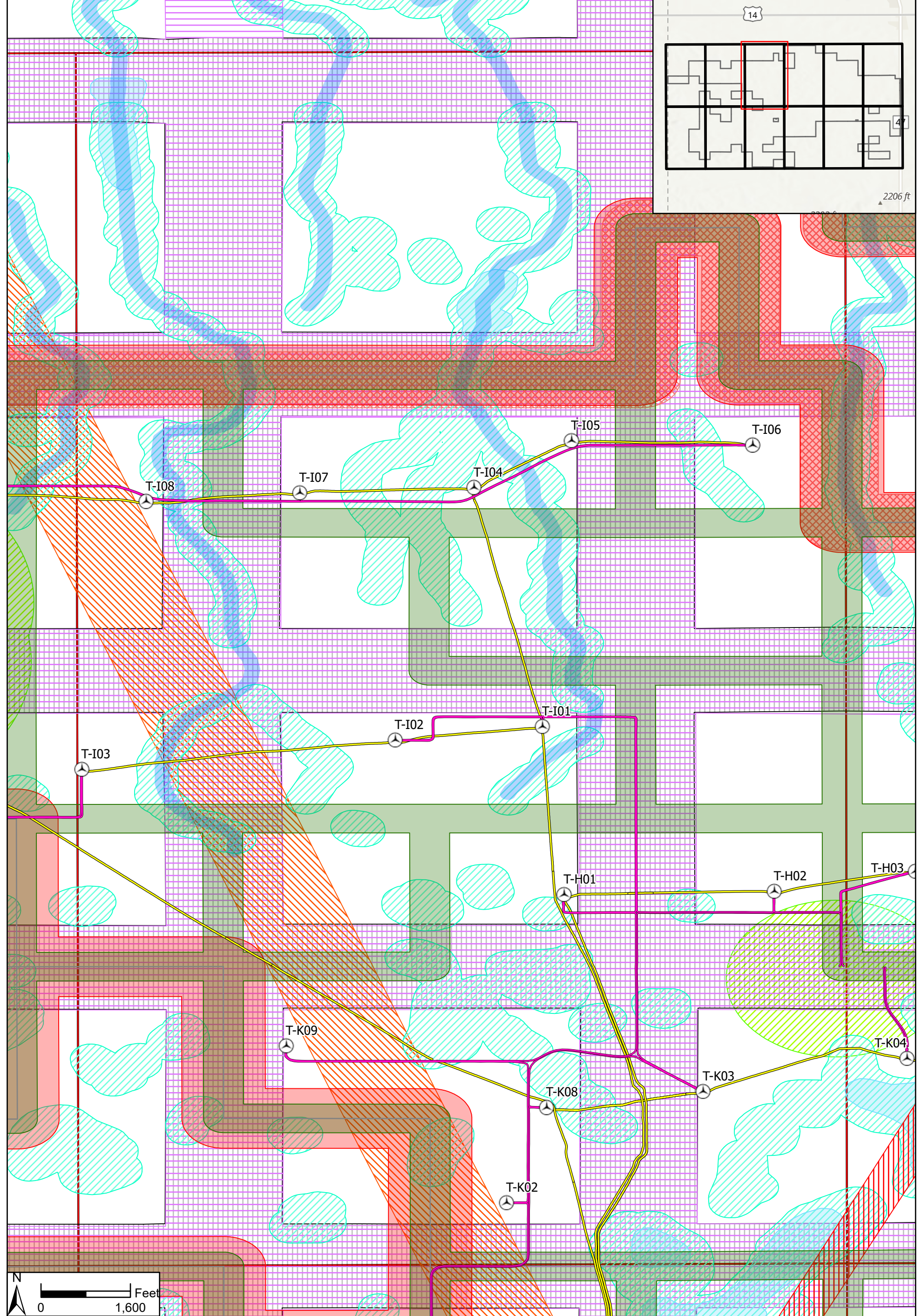
Data Source(s): Westwood (2021); .

- | | | |
|--|--|---|
| Turbines | 1.1x Tip Height from Non Participant Setback | Section Line Setback (750') |
| MET Tower | Microwave Beam Path Setback (233') | Road Setback (750') |
| As-Built Fence Line | Stream Setback (100') | Highway Setback (750') |
| As-Built Access Road | Waterbody Setback (100') | Hyde County Dwelling Setback (1400') |
| As-Built Collection | Wetlands Setback (250') | Northern Long Eared Bat Habitat Setback (1000') |
| Project Boundary | Project Boundary Setback (500') | Substation Setback (566') |
| Setback from participating (OH plus 20m) | Existing Transmission Setback (634') | Map Series Index |



Data Source(s): Westwood (2021); .

- | | | |
|--|--|---|
| Turbines | 1.1x Tip Height from Non Participant Setback | Section Line Setback (750') |
| MET Tower | Microwave Beam Path Setback (233') | Road Setback (750') |
| As-Built Fence Line | Stream Setback (100') | Highway Setback (750') |
| As-Built Access Road | Waterbody Setback (100') | Hyde County Dwelling Setback (1400') |
| As-Built Collection | Wetlands Setback (250') | Northern Long Eared Bat Habitat Setback (1000') |
| Project Boundary | Project Boundary Setback (500') | Map Series Index |
| Setback from participating (OH plus 20m) | Substation Setback (566') | |
| | Existing Transmission Setback (634') | |



Data Source(s): Westwood (2021); .

- | | | |
|--|--|---|
| Turbines | 1.1x Tip Height from Non Participant Setback | Section Line Setback (750') |
| MET Tower | Microwave Beam Path Setback (233') | Road Setback (750') |
| As-Built Fence Line | Stream Setback (100') | Highway Setback (750') |
| As-Built Access Road | Waterbody Setback (100') | Hyde County Dwelling Setback (1400') |
| As-Built Collection | Wetlands Setback (250') | Northern Long Eared Bat Habitat Setback (1000') |
| Project Boundary | Project Boundary Setback (500') | Map Series Index |
| Setback from participating (OH plus 20m) | Substation Setback (566') | |
| | Existing Transmission Setback (634') | |

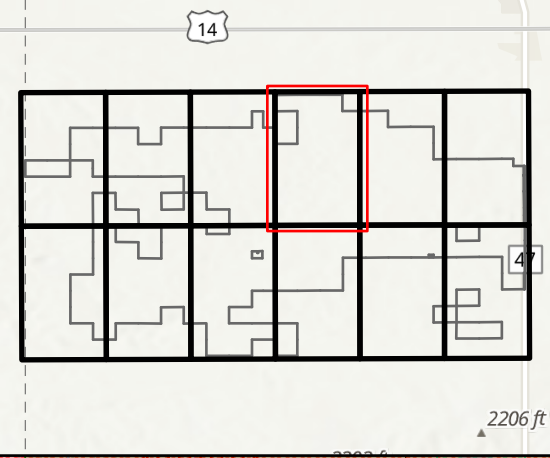
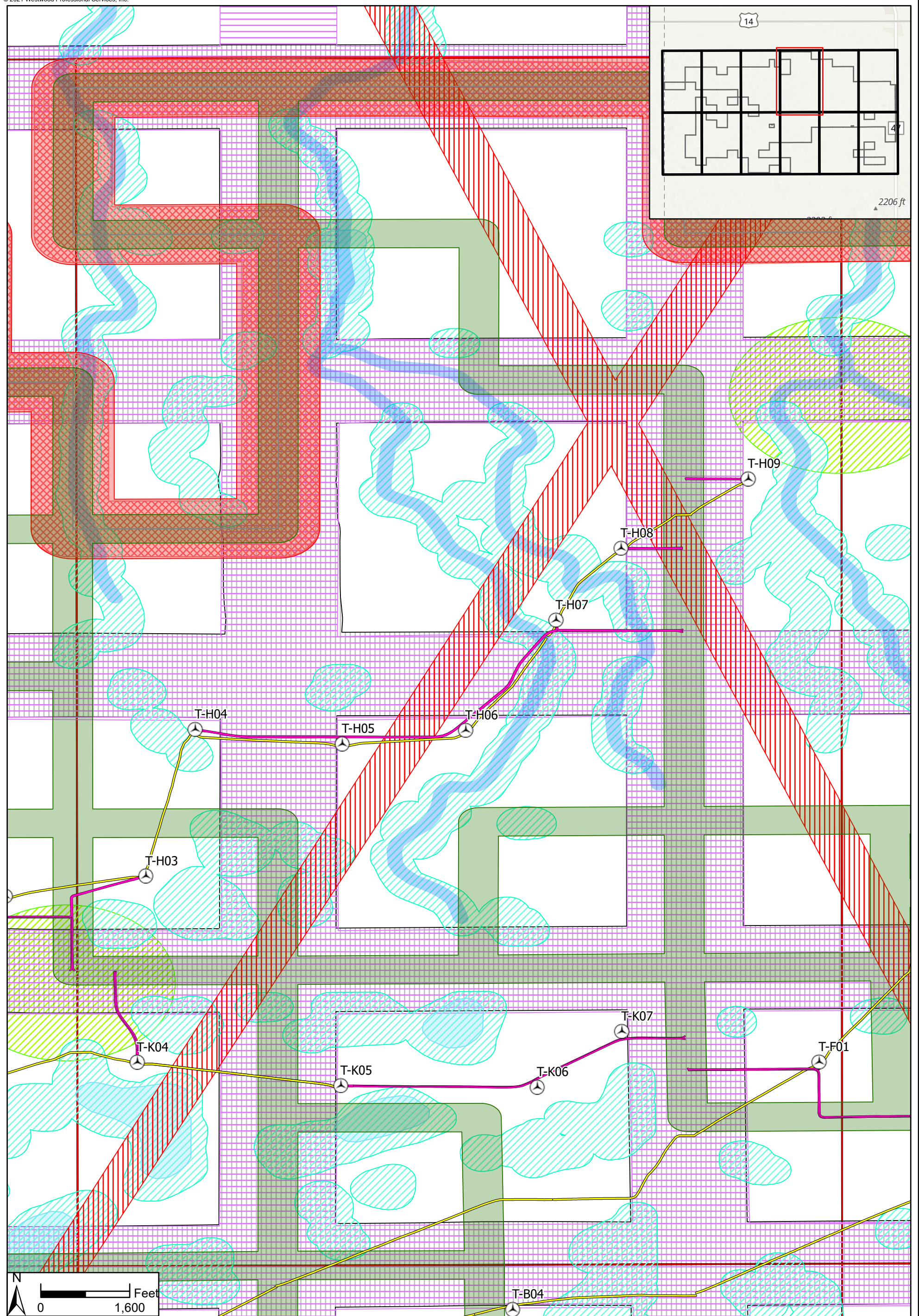
Triple H Wind Farm

Hyde County, SD

As-Built Setback Exhibit

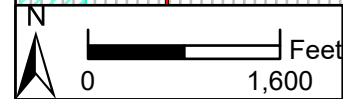
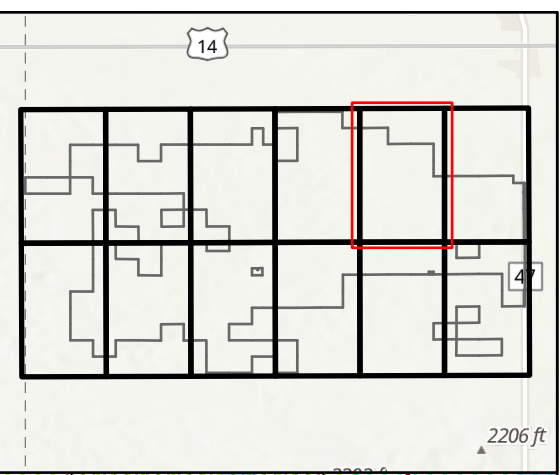
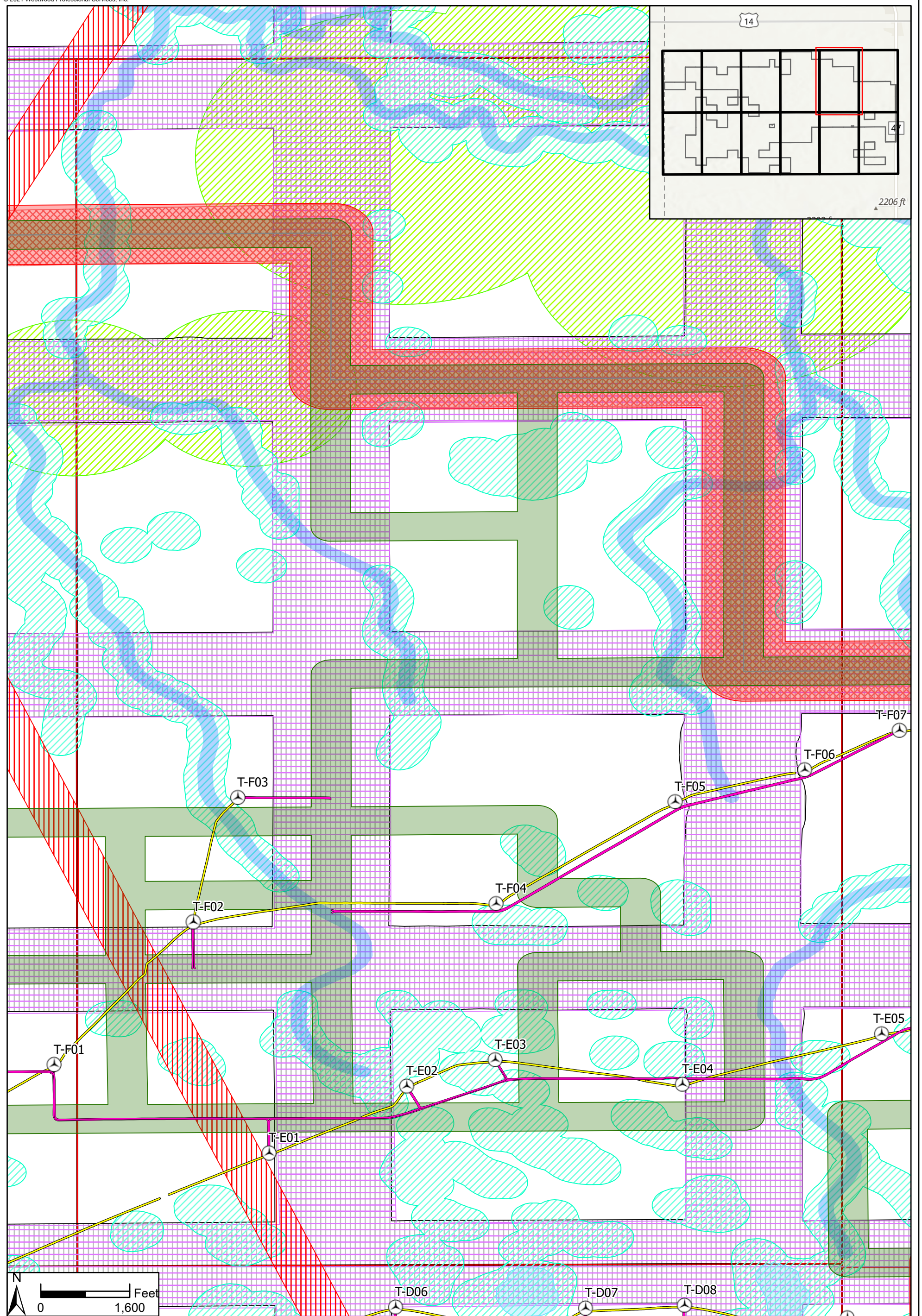
Page Name: C1
Page #4

February 4, 2021



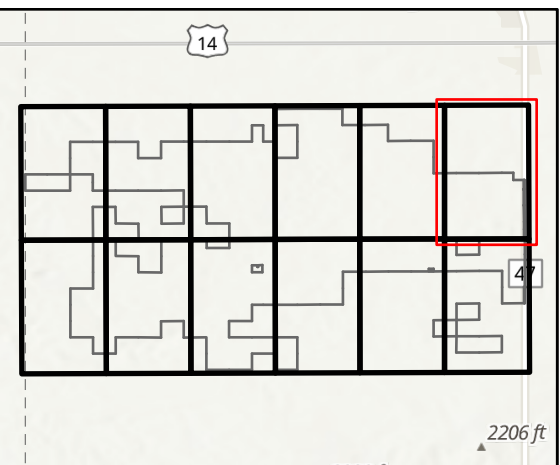
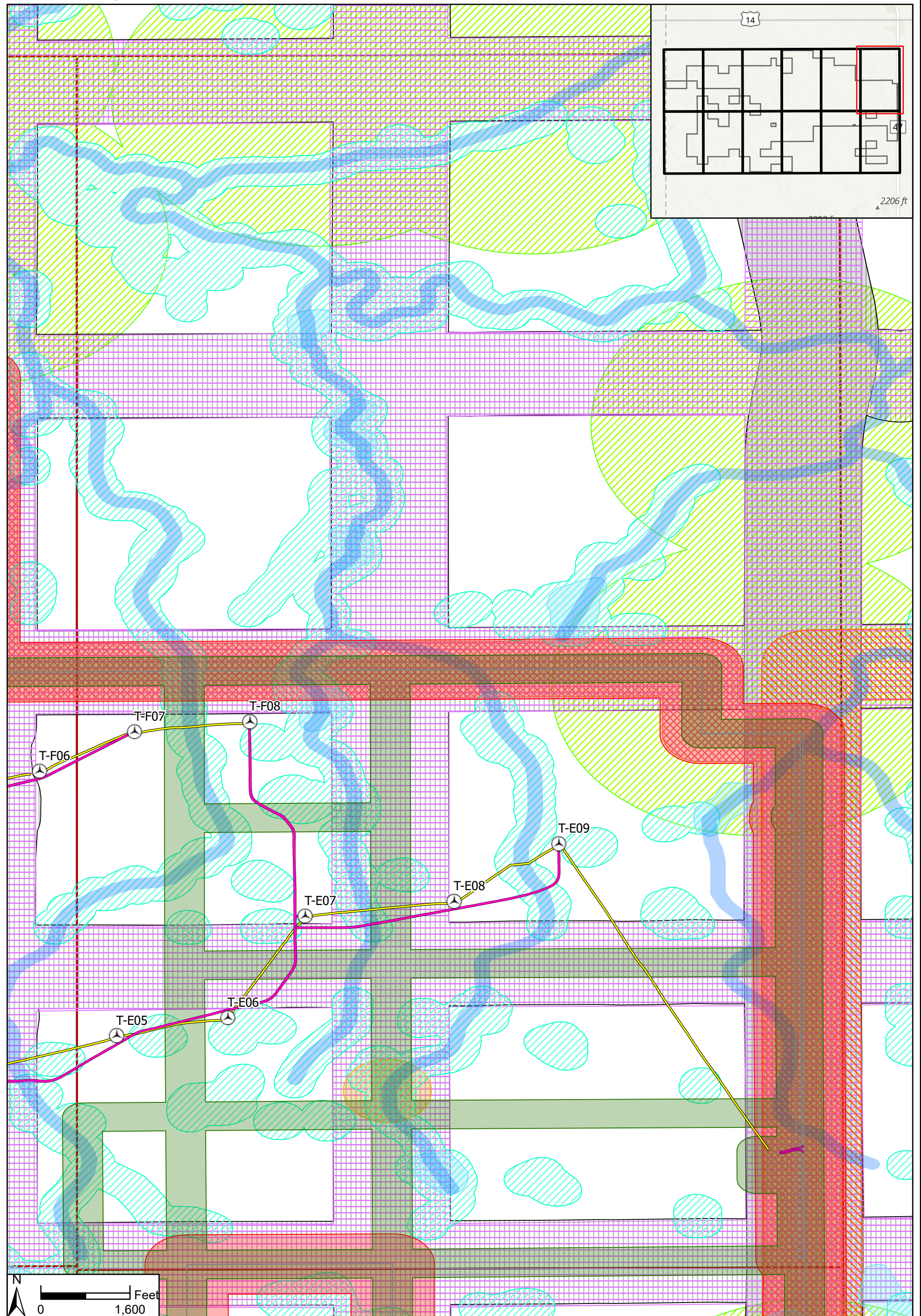
Data Source(s): Westwood (2021);

- | | | |
|--|--|---|
| Turbines | 1.1x Tip Height from Non Participant Setback | Section Line Setback (750') |
| MET Tower | Microwave Beam Path Setback (233') | Road Setback (750') |
| As-Built Fence Line | Stream Setback (100') | Highway Setback (750') |
| As-Built Access Road | Waterbody Setback (100') | Hyde County Dwelling Setback (1400') |
| As-Built Collection | Wetlands Setback (250') | Northern Long Eared Bat Habitat Setback (1000') |
| Project Boundary | Project Boundary Setback (500') | Substation Setback (566') |
| Setback from participating (OH plus 20m) | Existing Transmission Setback (634') | Map Series Index |



Data Source(s): Westwood (2021);

- | | | |
|--|--|---|
| Turbines | 1.1x Tip Height from Non Participant Setback | Section Line Setback (750') |
| MET Tower | Microwave Beam Path Setback (233') | Road Setback (750') |
| As-Built Fence Line | Stream Setback (100') | Highway Setback (750') |
| As-Built Access Road | Waterbody Setback (100') | Hyde County Dwelling Setback (1400') |
| As-Built Collection | Wetlands Setback (250') | Northern Long Eared Bat Habitat Setback (1000') |
| Project Boundary | Project Boundary Setback (500') | Map Series Index |
| Setback from participating (OH plus 20m) | Substation Setback (566') | |
| | Existing Transmission Setback (634') | |



Data Source(s): Westwood (2021); .

- | | | |
|--|--|---|
| Turbines | 1.1x Tip Height from Non Participant Setback | Section Line Setback (750') |
| MET Tower | Microwave Beam Path Setback (233') | Road Setback (750') |
| As-Built Fence Line | Stream Setback (100') | Highway Setback (750') |
| As-Built Access Road | Waterbody Setback (100') | Hyde County Dwelling Setback (1400') |
| As-Built Collection | Wetlands Setback (250') | Northern Long Eared Bat Habitat Setback (1000') |
| Project Boundary | Project Boundary Setback (500') | Map Series Index |
| Setback from participating (OH plus 20m) | Substation Setback (566') | |
| | Existing Transmission Setback (634') | |

Triple H Wind Farm

Hyde County, SD

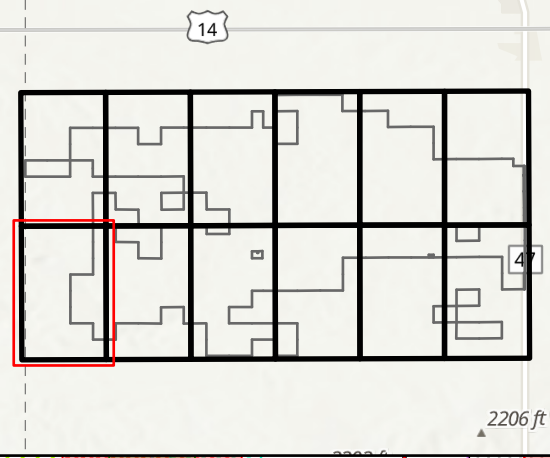
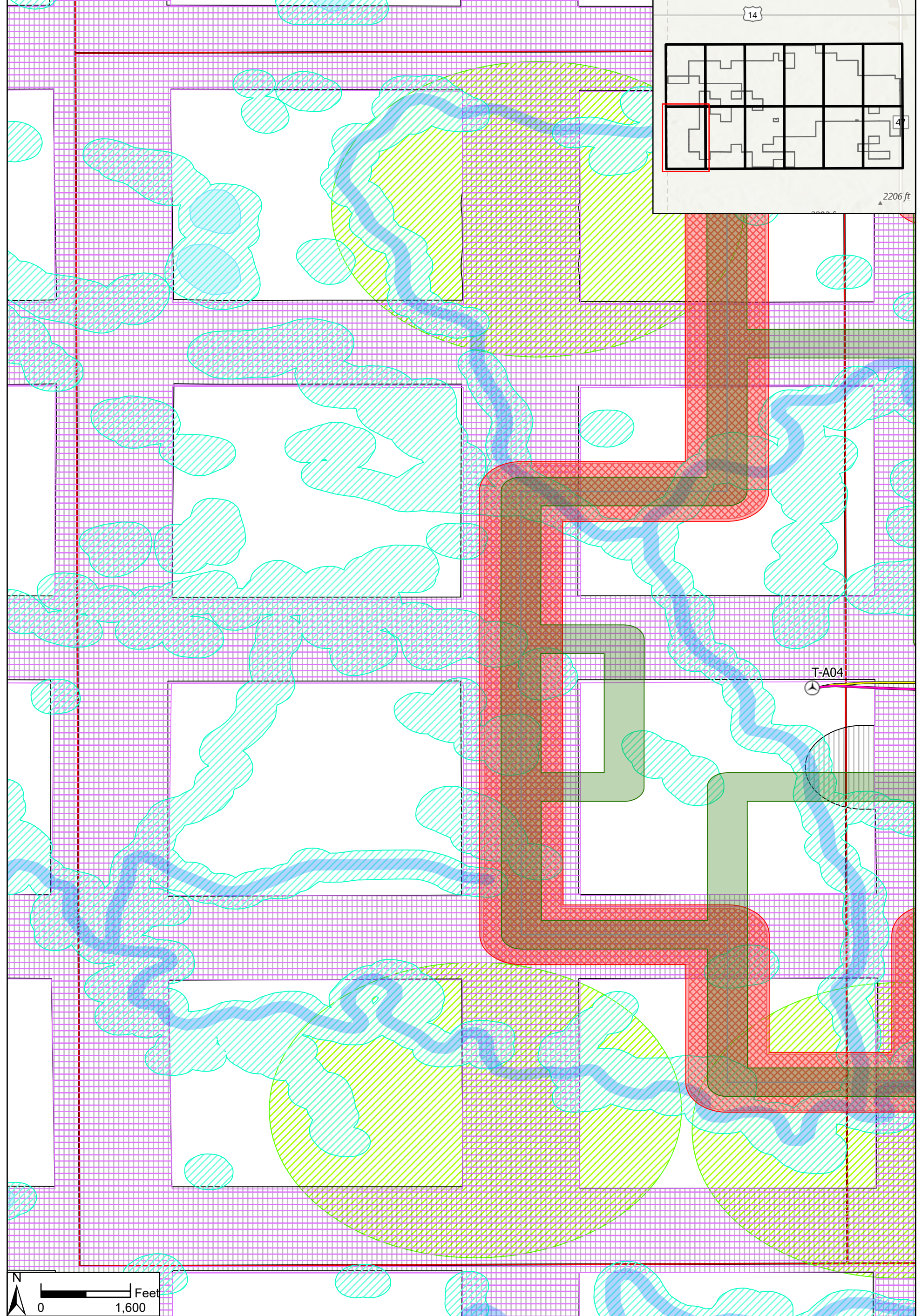
As-Built Setback Exhibit

Page Name: F1

Page #7

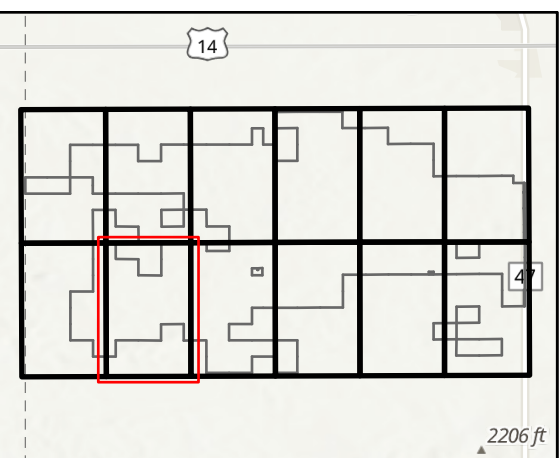
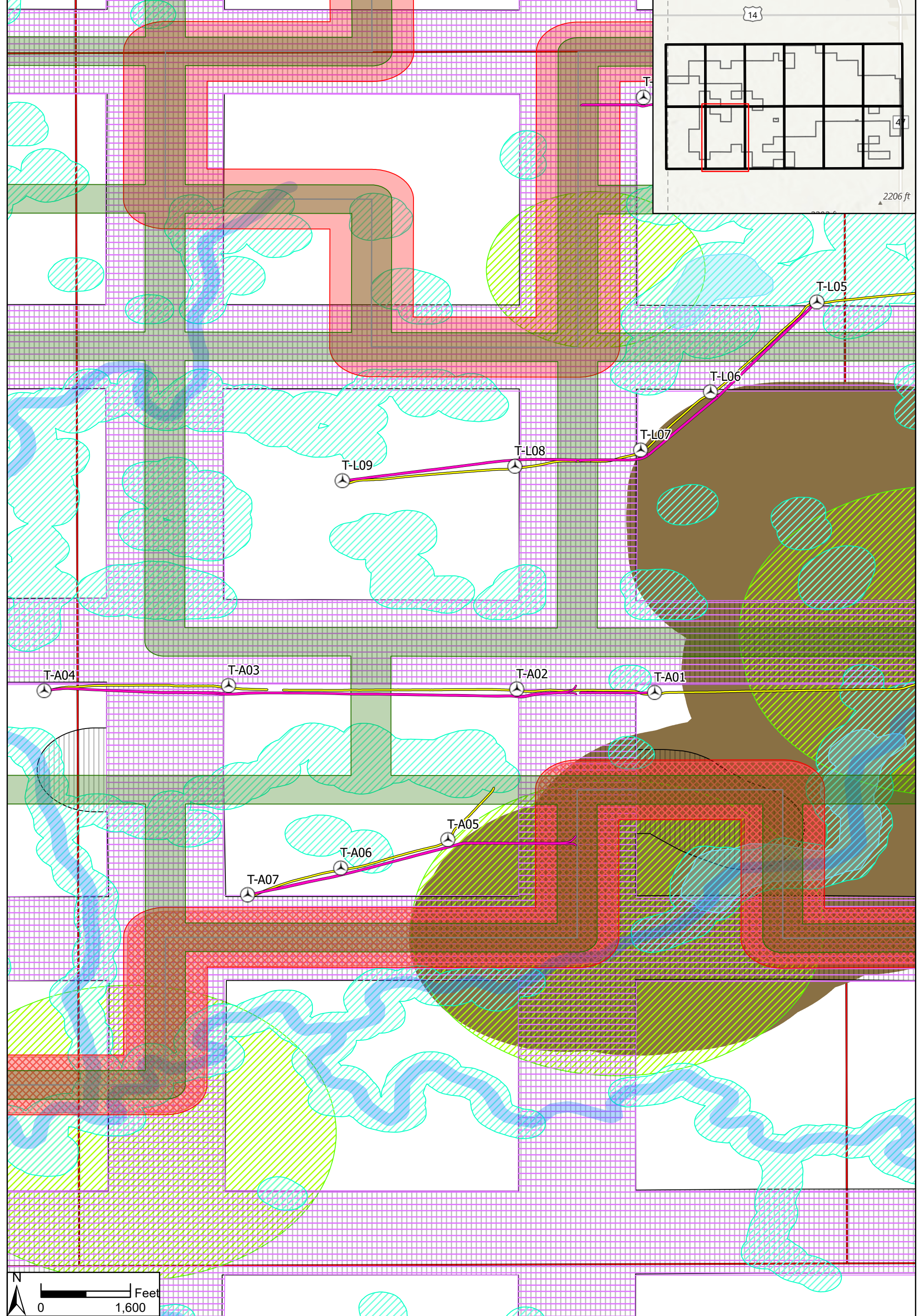
February 4, 2021





Data Source(s): Westwood (2021);

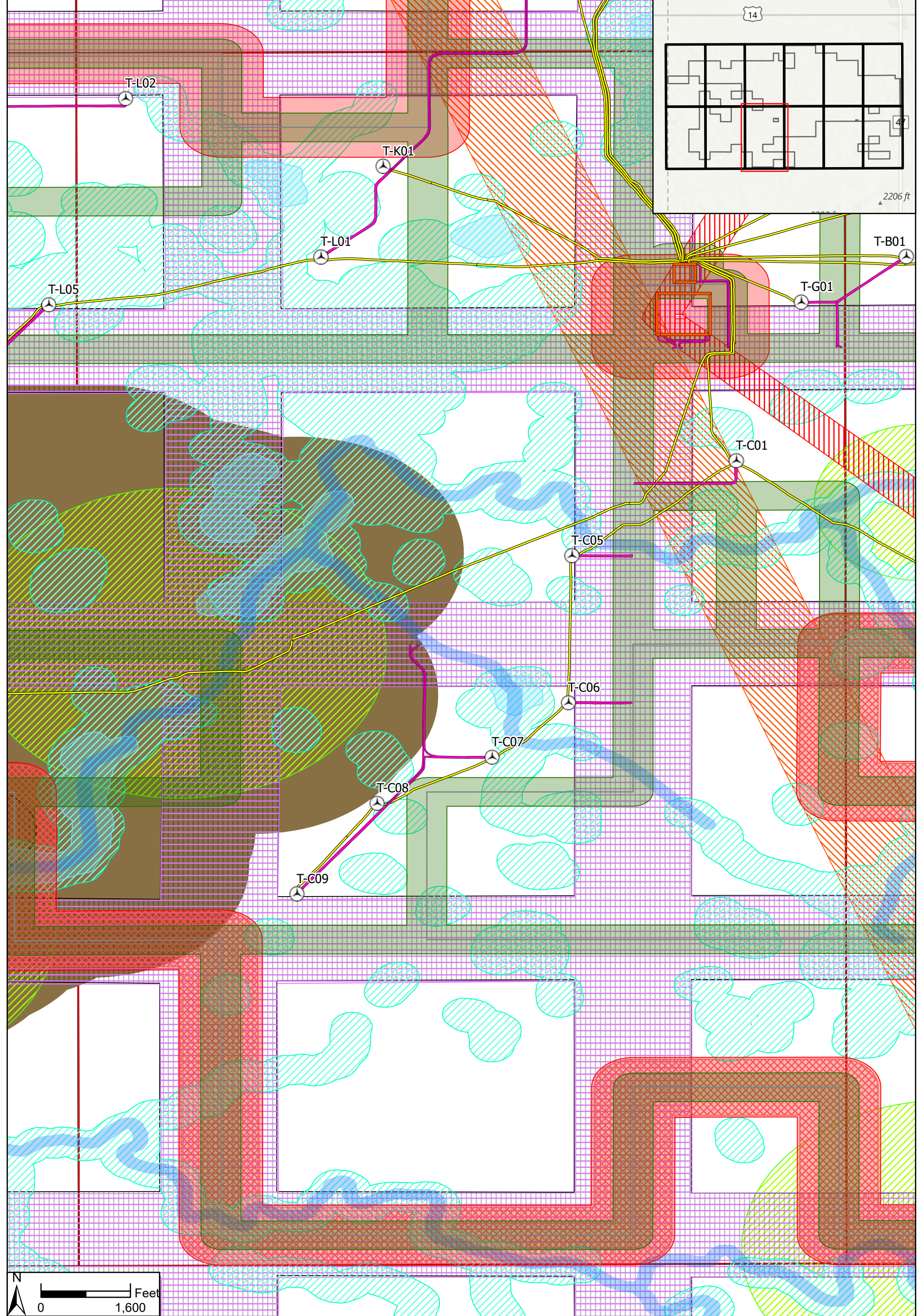
- | | | |
|--|--|---|
| Turbines | 1.1x Tip Height from Non Participant Setback | Section Line Setback (750') |
| MET Tower | Microwave Beam Path Setback (233') | Road Setback (750') |
| As-Built Fence Line | Stream Setback (100') | Highway Setback (750') |
| As-Built Access Road | Waterbody Setback (100') | Hyde County Dwelling Setback (1400') |
| As-Built Collection | Wetlands Setback (250') | Northern Long Eared Bat Habitat Setback (1000') |
| Project Boundary | Project Boundary Setback (500') | Map Series Index |
| Setback from participating (OH plus 20m) | Substation Setback (566') | |
| | Existing Transmission Setback (634') | |



Data Source(s): Westwood (2021); .

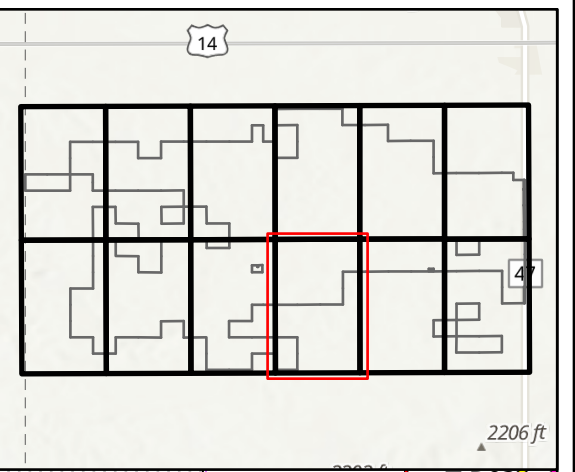
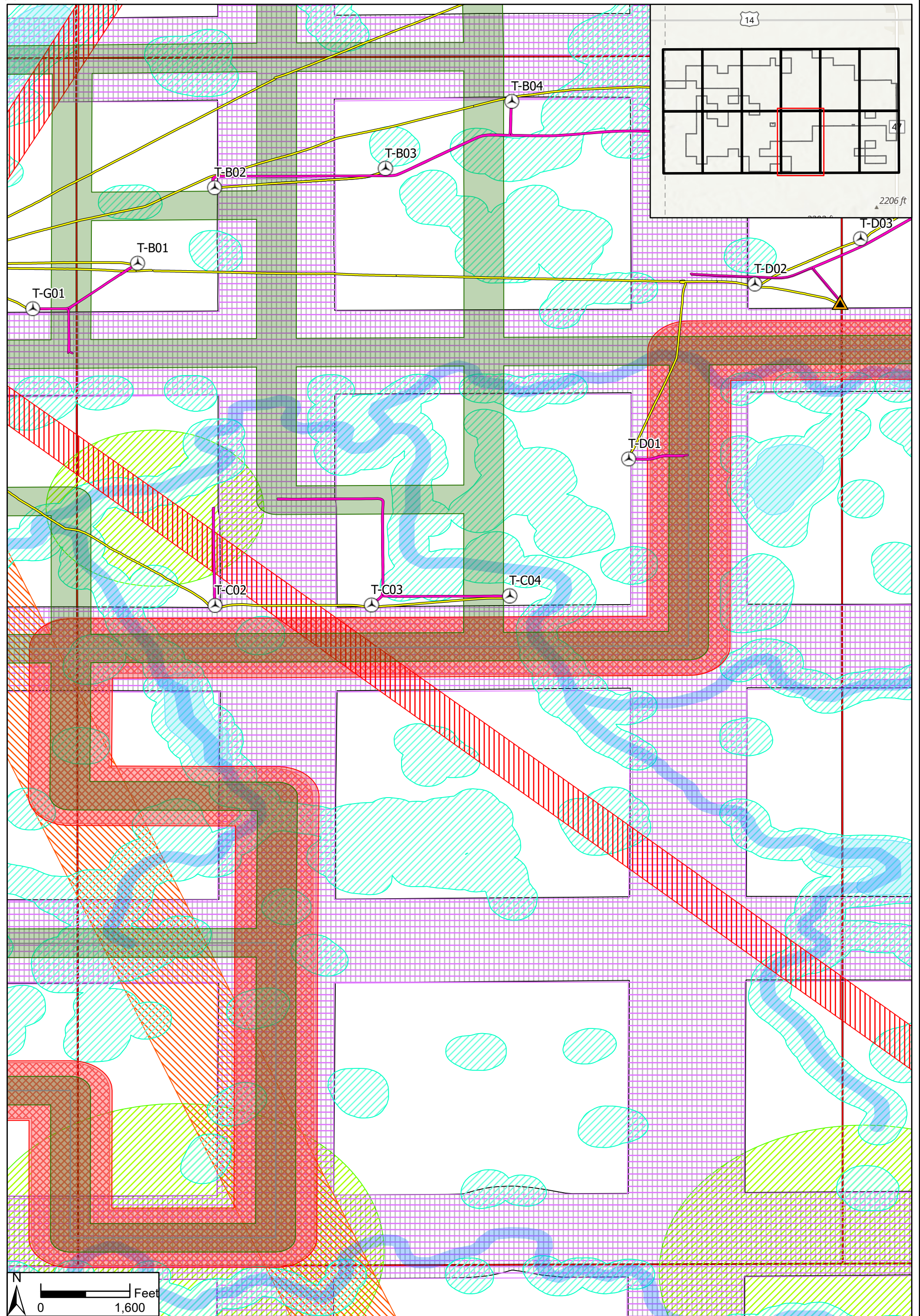
- | | | |
|--|--|---|
| Turbines | 1.1x Tip Height from Non Participant Setback | Section Line Setback (750') |
| MET Tower | Microwave Beam Path Setback (233') | Road Setback (750') |
| As-Built Fence Line | Stream Setback (100') | Highway Setback (750') |
| As-Built Access Road | Waterbody Setback (100') | Hyde County Dwelling Setback (1400') |
| As-Built Collection | Wetlands Setback (250') | Northern Long Eared Bat Habitat Setback (1000') |
| Project Boundary | Project Boundary Setback (500') | Map Series Index |
| Setback from participating (OH plus 20m) | Substation Setback (566') | |
| | Existing Transmission Setback (634') | |

Westwood
 Phone (952) 937-5150 12701 Whitewater Drive, Suite #300
 Fax (952) 937-5822 Minnetonka, MN 55343
 Toll Free (888) 937-5150 westwoodps.com
 Westwood Professional Services, Inc.



Data Source(s): Westwood (2021); .

- | | | |
|--|--|---|
| Turbines | 1.1x Tip Height from Non Participant Setback | Section Line Setback (750') |
| MET Tower | Microwave Beam Path Setback (233') | Road Setback (750') |
| As-Built Fence Line | Stream Setback (100') | Highway Setback (750') |
| As-Built Access Road | Waterbody Setback (100') | Hyde County Dwelling Setback (1400') |
| As-Built Collection | Wetlands Setback (250') | Northern Long Eared Bat Habitat Setback (1000') |
| Project Boundary | Project Boundary Setback (500') | Map Series Index |
| Setback from participating (OH plus 20m) | Substation Setback (566') | |
| | Existing Transmission Setback (634') | |

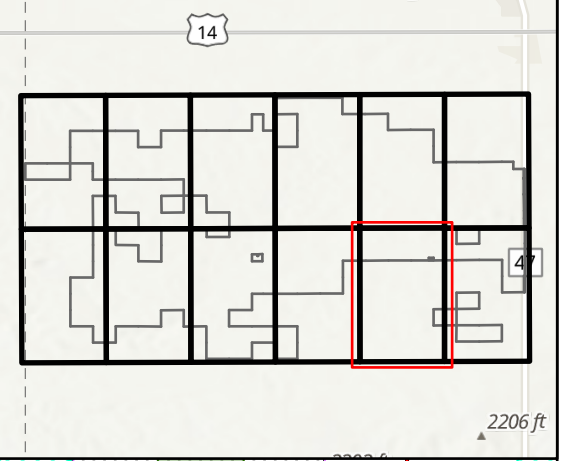
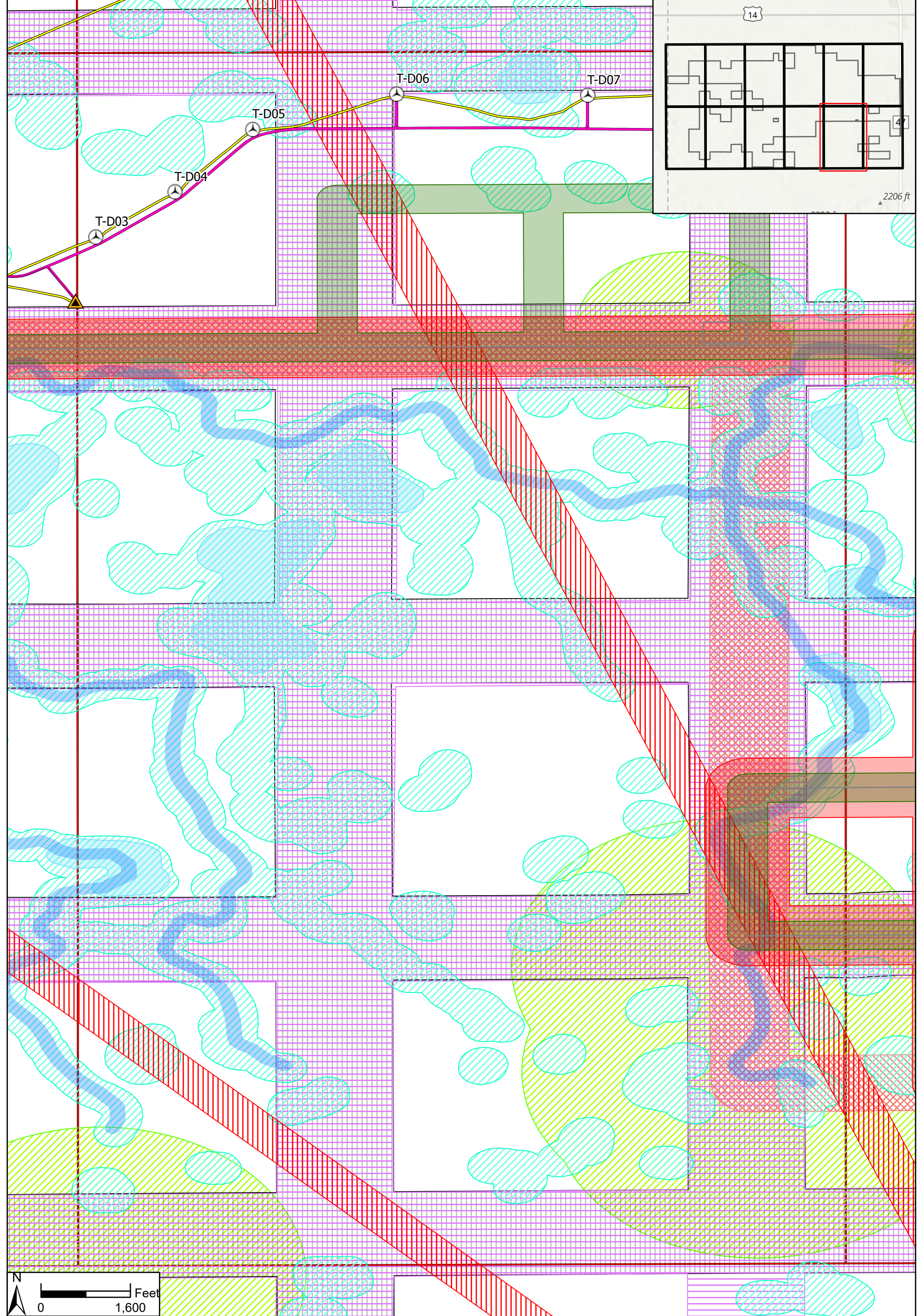


Data Source(s): Westwood (2021); .

- | | | |
|--|--|---|
| Turbines | 1.1x Tip Height from Non Participant Setback | Section Line Setback (750') |
| MET Tower | Microwave Beam Path Setback (233') | Road Setback (750') |
| As-Built Fence Line | Stream Setback (100') | Highway Setback (750') |
| As-Built Access Road | Waterbody Setback (100') | Hyde County Dwelling Setback (1400') |
| As-Built Collection | Wetlands Setback (250') | Northern Long Eared Bat Habitat Setback (1000') |
| Project Boundary | Project Boundary Setback (500') | Map Series Index |
| Setback from participating (OH plus 20m) | Substation Setback (566') | |
| | Existing Transmission Setback (634') | |

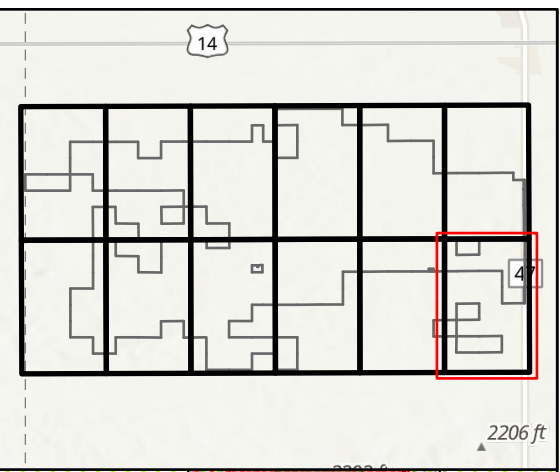
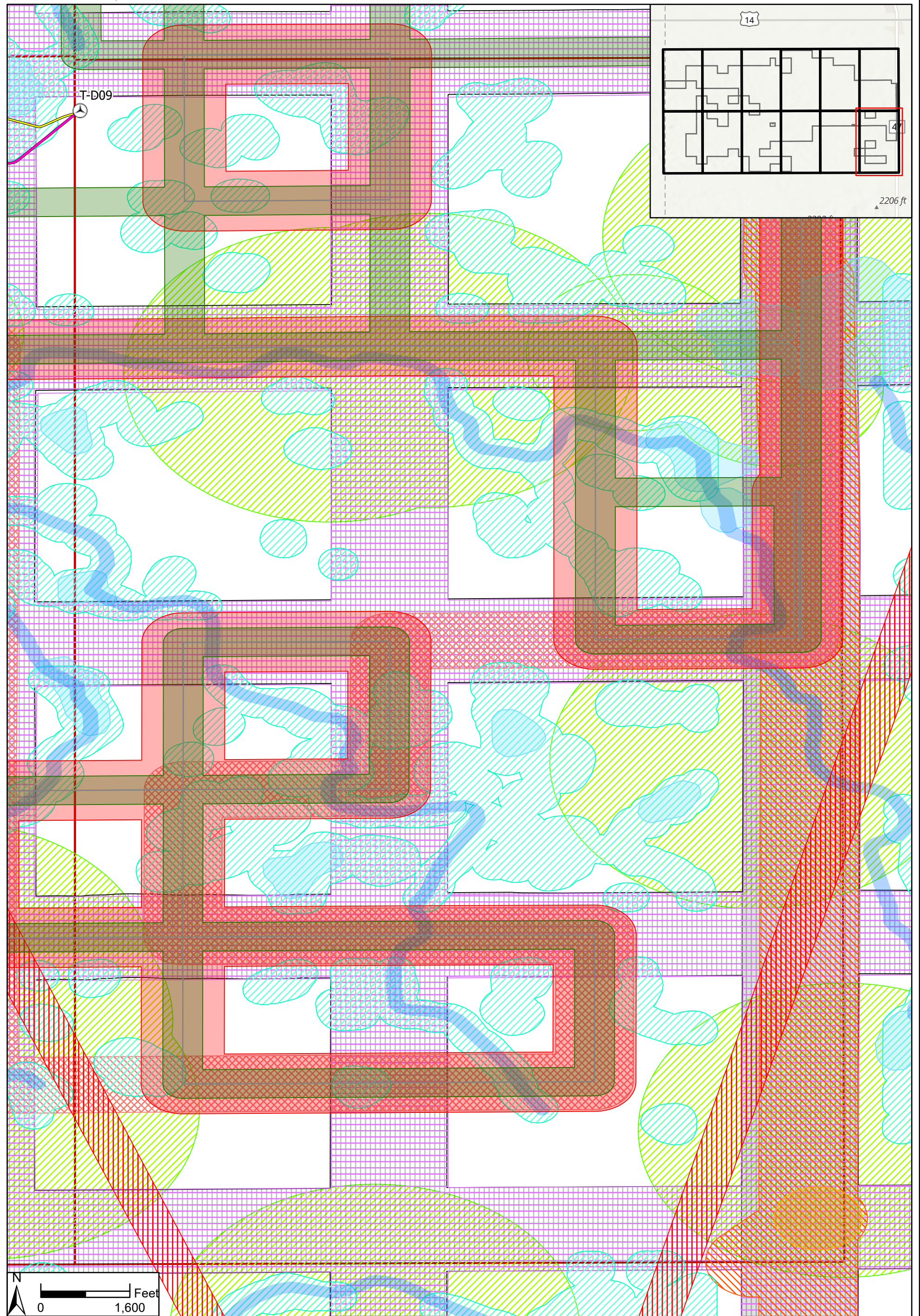
Westwood

Phone (952) 937-5150 12701 Whitewater Drive, Suite #300
 Fax (952) 937-5822 Minnetonka, MN 55343
 Toll Free (888) 937-5150 westwoodps.com
 Westwood Professional Services, Inc.



Data Source(s): Westwood (2021); .

- | | | |
|--|--|---|
| Turbines | 1.1x Tip Height from Non Participant Setback | Section Line Setback (750') |
| MET Tower | Microwave Beam Path Setback (233') | Road Setback (750') |
| As-Built Fence Line | Stream Setback (100') | Highway Setback (750') |
| As-Built Access Road | Waterbody Setback (100') | Hyde County Dwelling Setback (1400') |
| As-Built Collection | Wetlands Setback (250') | Northern Long Eared Bat Habitat Setback (1000') |
| Project Boundary | Project Boundary Setback (500') | Map Series Index |
| Setback from participating (OH plus 20m) | Substation Setback (566') | |
| | Existing Transmission Setback (634') | |



Data Source(s): Westwood (2021); .

- Turbines
- MET Tower
- As-Built Fence Line
- As-Built Access Road
- As-Built Collection
- Project Boundary
- Setback from participating (OH plus 20m)
- 1.1x Tip Height from Non Participant Setback
- Microwave Beam Path Setback (233')
- Stream Setback (100')
- Waterbody Setback (100')
- Wetlands Setback (250')
- Project Boundary Setback (500')
- Substation Setback (566')
- Existing Transmission Setback (634')
- Section Line Setback (750')
- Road Setback (750')
- Highway Setback (750')
- Hyde County Dwelling Setback (1400')
- Northern Long Eared Bat Habitat Setback (1000')
- Map Series Index

Westwood
 Phone (952) 937-5150 12701 Whitewater Drive, Suite #300
 Fax (952) 937-5822 Minnetonka, MN 55343
 Toll Free (888) 937-5150 westwoodps.com
 Westwood Professional Services, Inc.

Triple H Wind Farm
 Hyde County, SD
As-Built Setback Exhibit
 Page Name: F2
 Page #13
 February 4, 2021