



www.eapc.net | 701.775.3000

Crowned Ridge Wind Farm Sound Pressure Iso-Lines Overview Map

Client
SWCA Environmental Consultants

Project Description
Wind turbine layout with occupied structures within 2 km as well as parcel boundaries.

Predicted sound pressure levels at existing residences and land parcel boundaries.

Additional 2 dBA added.

Location: Watertown, SD
Project #: 20174431

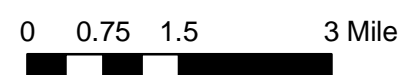
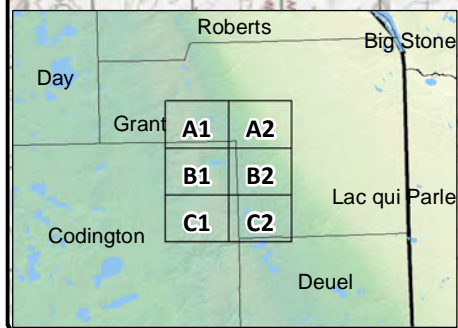
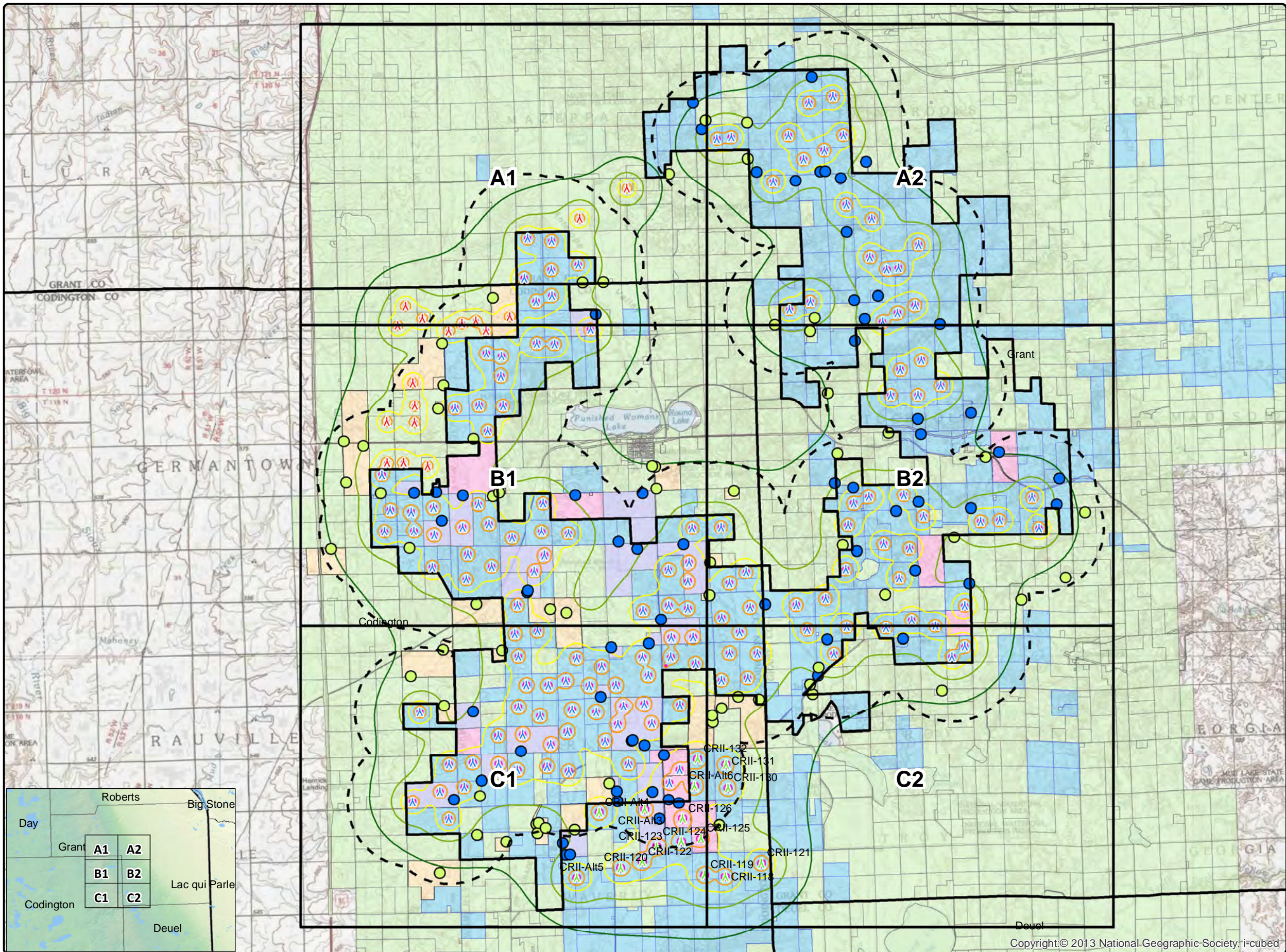
Issue Dates

#	Description	Date
1	Original	2019.05.24

Drawn By: AS Checked By: JH

- Legend**
- Crowned Ridge Wind Turbines
 - Crowned Ridge II Wind Turbines
 - Dakota Range Wind Turbines
 - 2 km Turbine Buffer
 - County Lines
 - CR1 Project Boundary
 - Non Participants
 - Participants
 - <all other values>
- Sound Pressure (dBA)**
- 35
 - 40
 - 45
 - 50
 - 55
- Parcel Status**
- Participating Codington Parcels
 - Non-Participating Codington Parcels
 - Participating Parcels
 - Pending Parcels
 - Non-Participating Parcels

COPYRIGHT:
All maps, plans, specifications, computer files, field data, notes and other documents and instruments prepared by EAPC as instruments of service shall remain the property of EAPC. EAPC shall retain all common law, statutory and other reserved rights, including the copyright thereto.



Copyright:© 2013 National Geographic Society, i-cubed

Neither EAPC nor any person acting on their behalf: (a) makes any warranty, express or implied, with respect to the use of any information disclosed on this drawing; or (b) assumes any liability with respect to the use of any information or methods disclosed on this drawing. Any recipient of this document, by their acceptance or use of this document, releases EAPC, its parent corporations and its affiliates, from any liability for direct, indirect, consequential, or special loss or damage whether arising in contract, warranty, express or implied, tort or otherwise, and irrespective of fault, negligence, and strict liability. The responsibilities for the applications and use of the material contained in this document remain solely with the client.



www.eapc.net | 701.775.3000

Crowned Ridge Wind Farm Sound Pressure Iso-Lines

Client
SWCA Environmental Consultants

Project Description
Wind turbine layout with occupied structures within 2 km as well as parcel boundaries.

Predicted sound pressure levels at existing residences and land parcel boundaries.

Additional 2 dBA added.

Location: Watertown, SD
Project #: 20174431

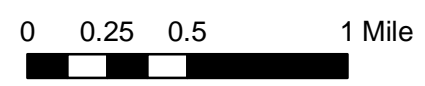
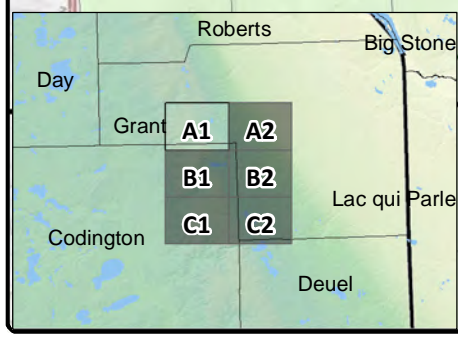
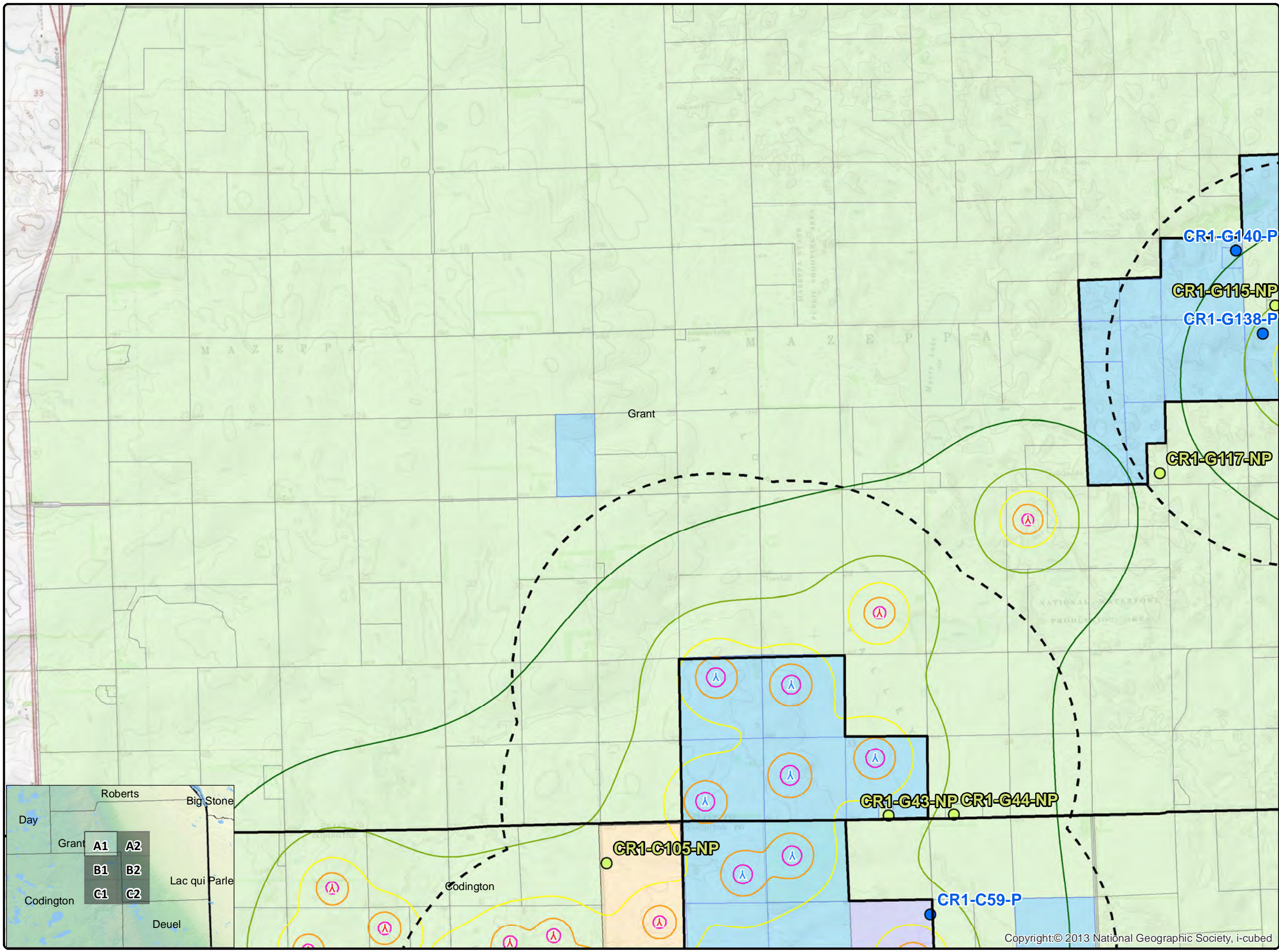
Issue Dates

#	Description	Date
1	Original	2019.05.24

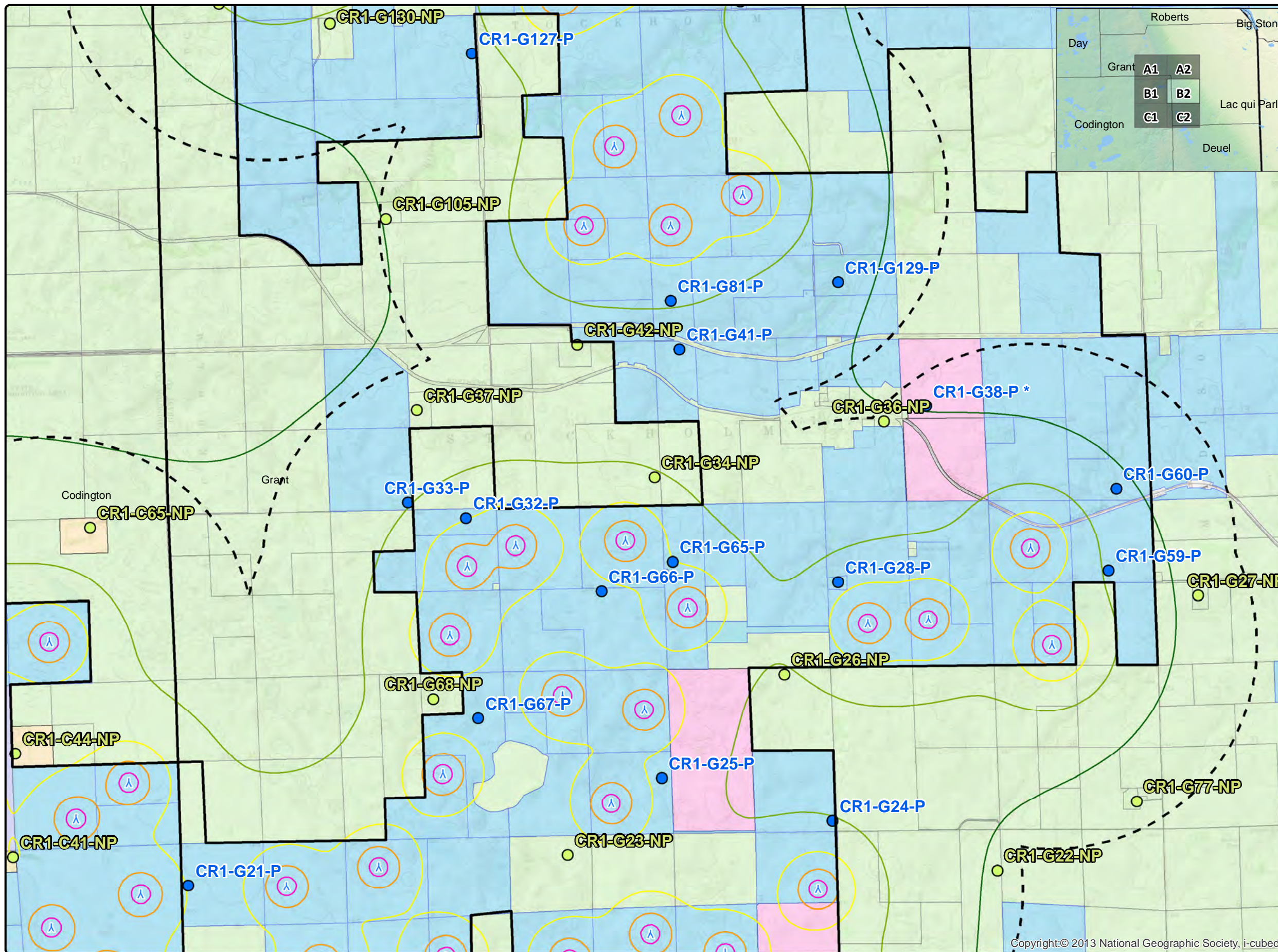
Drawn By: AS Checked By: JH

- Legend**
- Crowned Ridge Wind Turbines
 - Crowned Ridge II Wind Turbines
 - Dakota Range Wind Turbines
 - 2 km Turbine Buffer
 - County Lines
 - CR1 Project Boundary
 - Non Participants
 - Participants
 - <all other values>
- Sound Pressure (dBA)**
- 35
 - 40
 - 45
 - 50
 - 55
- Parcel Status**
- Participating Codington Parcels
 - Non-Participating Codington Parcels
 - Participating Parcels
 - Pending Parcels
 - Non-Participating Parcels

COPYRIGHT:
All maps, plans, specifications, computer files, field data, notes and other documents and instruments prepared by EAPC as instruments of service shall remain the property of EAPC. EAPC shall retain all common law, statutory and other reserved rights, including the copyright thereto.



Neither EAPC nor any person acting on their behalf: (a) makes any warranty, express or implied, with respect to the use of any information disclosed on this drawing; or (b) assumes any liability with respect to the use of any information or methods disclosed on this drawing. Any recipient of this document, by their acceptance or use of this document, releases EAPC, its parent corporations and its affiliates, from any liability for direct, indirect, consequential, or special loss or damage whether arising in contract, warranty, express or implied, tort or otherwise, and irrespective of fault, negligence, and strict liability. The responsibilities for the applications and use of the material contained in this document remain solely with the client.




www.eapc.net | 701.775.3000

Crowned Ridge Wind Farm Sound Pressure Iso-Lines

Client
SWCA Environmental Consultants

Project Description
Wind turbine layout with occupied structures within 2 km as well as parcel boundaries.

Predicted sound pressure levels at existing residences and land parcel boundaries.

Additional 2 dBA added.

Location: Watertown, SD
Project #: 20174431

Issue Dates

#	Description	Date
1	Original	2019.05.24

Drawn By: AS Checked By: JH

Legend

- Crowned Ridge Wind Turbines
- Crowned Ridge II Wind Turbines
- Dakota Range Wind Turbines
- 2 km Turbine Buffer
- County Lines
- CR1 Project Boundary
- Non Participants
- Participants
- <all other values>


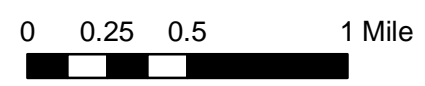
Sound Pressure (dBA)

- 35
- 40
- 45
- 50
- 55

Parcel Status

- Participating Codington Parcels
- Non-Participating Codington Parcels
- Participating Parcels
- Pending Parcels
- Non-Participating Parcels

COPYRIGHT:
All maps, plans, specifications, computer files, field data, notes and other documents and instruments prepared by EAPC as instruments of service shall remain the property of EAPC. EAPC shall retain all common law, statutory and other reserved rights, including the copyright thereto.

Neither EAPC nor any person acting on their behalf: (a) makes any warranty, express or implied, with respect to the use of any information disclosed on this drawing; or (b) assumes any liability with respect to the use of any information or methods disclosed on this drawing. Any recipient of this document, by their acceptance or use of this document, releases EAPC, its parent corporations and its affiliates, from any liability for direct, indirect, consequential, or special loss or damage whether arising in contract, warranty, express or implied, tort or otherwise, and irrespective of fault, negligence, and strict liability. The responsibilities for the applications and use of the material contained in this document remain solely with the client.



www.eapc.net | 701.775.3000

Crowned Ridge Wind Farm Sound Pressure Iso-Lines

Client
SWCA Environmental Consultants

Project Description
Wind turbine layout with occupied structures within 2 km as well as parcel boundaries.

Predicted sound pressure levels at existing residences and land parcel boundaries.

Additional 2 dBA added.

Location: Watertown, SD
Project #: 20174431

Issue Dates

#	Description	Date
1	Original	2019.05.24

Drawn By: AS Checked By: JH

Legend

- Crowned Ridge Wind Turbines
- Crowned Ridge II Wind Turbines
- Dakota Range Wind Turbines
- 2 km Turbine Buffer
- County Lines
- CR1 Project Boundary
- Non Participants
- Participants
- <all other values>

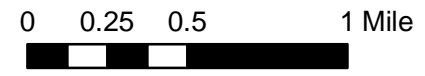
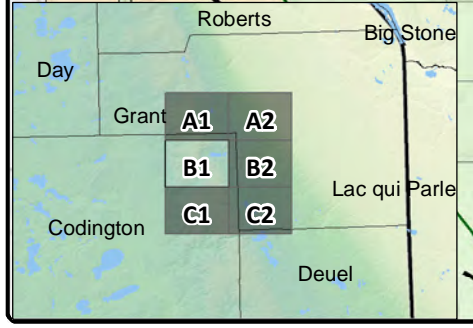
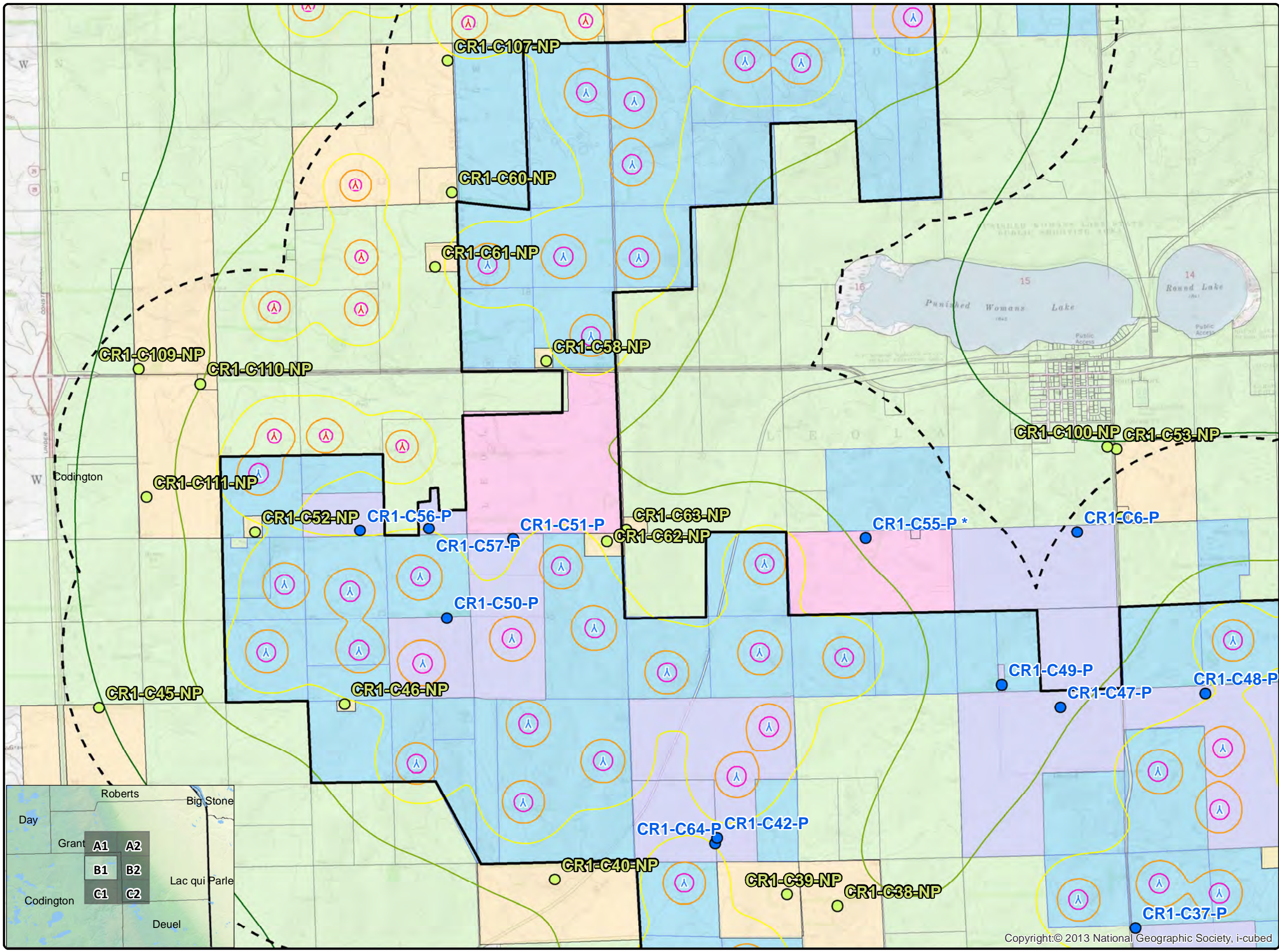
Sound Pressure (dBA)

- 35
- 40
- 45
- 50
- 55

Parcel Status

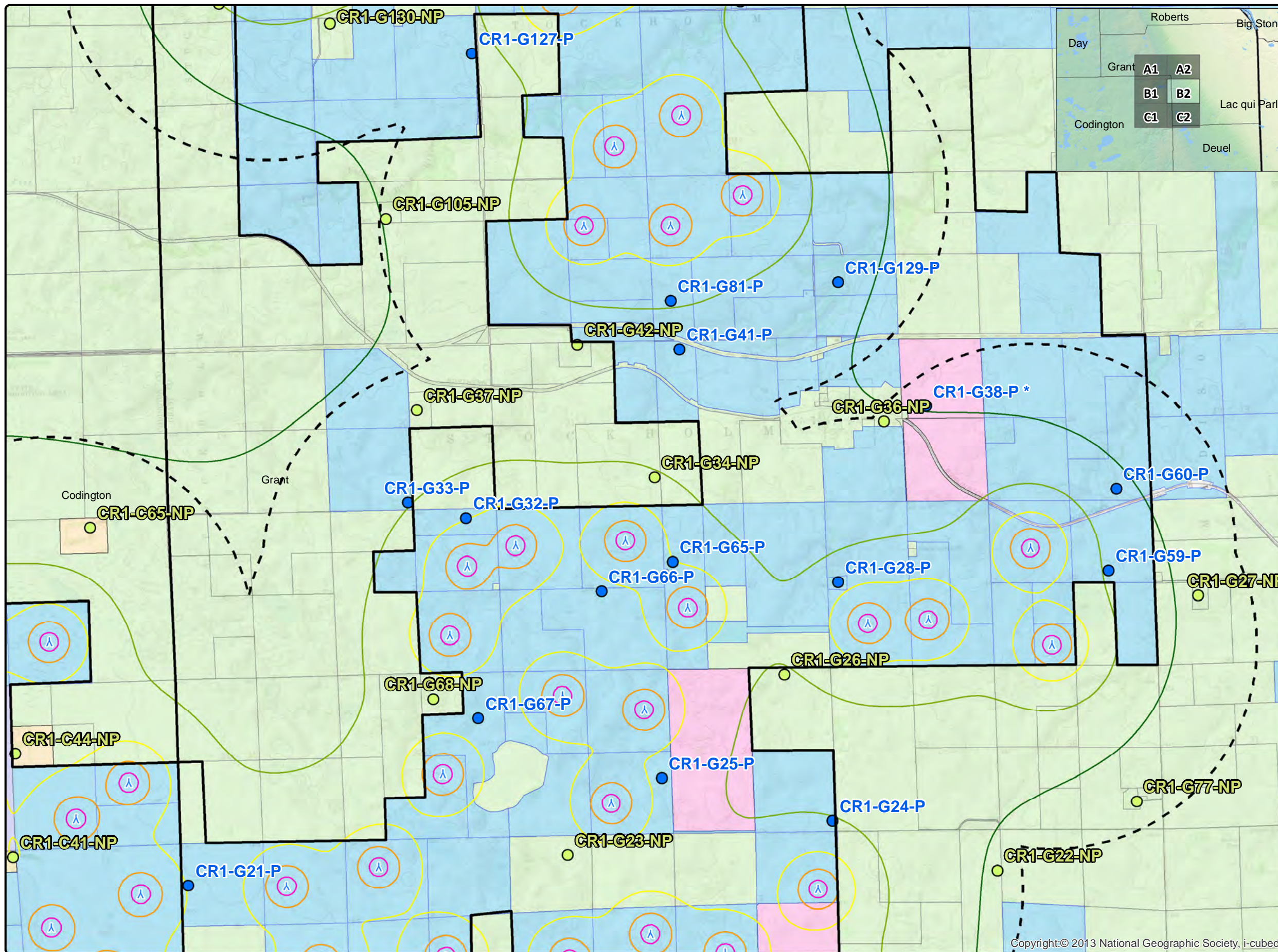
- Participating Codington Parcels
- Non-Participating Codington Parcels
- Participating Parcels
- Pending Parcels
- Non-Participating Parcels

COPYRIGHT:
All maps, plans, specifications, computer files, field data, notes and other documents and instruments prepared by EAPC as instruments of service shall remain the property of EAPC. EAPC shall retain all common law, statutory and other reserved rights, including the copyright thereto.



Neither EAPC nor any person acting on their behalf: (a) makes any warranty, express or implied, with respect to the use of any information disclosed on this drawing; or (b) assumes any liability with respect to the use of any information or methods disclosed on this drawing. Any recipient of this document, by their acceptance or use of this document, releases EAPC, its parent corporations and its affiliates, from any liability for direct, indirect, consequential, or special loss or damage whether arising in contract, warranty, express or implied, tort or otherwise, and irrespective of fault, negligence, and strict liability. The responsibilities for the applications and use of the material contained in this document remain solely with the client.

Copyright:© 2013 National Geographic Society, i-cubed




www.eapc.net | 701.775.3000

Crowned Ridge Wind Farm Sound Pressure Iso-Lines

Client
SWCA Environmental Consultants

Project Description
Wind turbine layout with occupied structures within 2 km as well as parcel boundaries.

Predicted sound pressure levels at existing residences and land parcel boundaries.

Additional 2 dBA added.

Location: Watertown, SD
Project #: 20174431

Issue Dates

#	Description	Date
1	Original	2019.05.24

Drawn By: AS Checked By: JH

Legend

- Crowned Ridge Wind Turbines
- Crowned Ridge II Wind Turbines
- Dakota Range Wind Turbines
- 2 km Turbine Buffer
- County Lines
- CR1 Project Boundary
- Non Participants
- Participants
- <all other values>


Sound Pressure (dBA)

- 35
- 40
- 45
- 50
- 55

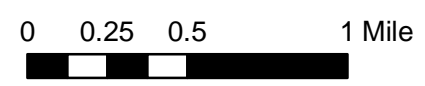
Parcel Status

- Participating Codington Parcels
- Non-Participating Codington Parcels
- Participating Parcels
- Pending Parcels
- Non-Participating Parcels

COPYRIGHT:
All maps, plans, specifications, computer files, field data, notes and other documents and instruments prepared by EAPC as instruments of service shall remain the property of EAPC. EAPC shall retain all common law, statutory and other reserved rights, including the copyright thereto.



Neither EAPC nor any person acting on their behalf: (a) makes any warranty, express or implied, with respect to the use of any information disclosed on this drawing; or (b) assumes any liability with respect to the use of any information or methods disclosed on this drawing. Any recipient of this document, by their acceptance or use of this document, releases EAPC, its parent corporations and its affiliates, from any liability for direct, indirect, consequential, or special loss or damage whether arising in contract, warranty, express or implied, tort or otherwise, and irrespective of fault, negligence, and strict liability. The responsibilities for the applications and use of the material contained in this document remain solely with the client.



Copyright:© 2013 National Geographic Society, i-cubed.



www.eapc.net | 701.775.3000

Crowned Ridge Wind Farm Sound Pressure Iso-Lines

Client
SWCA Environmental Consultants

Project Description
Wind turbine layout with occupied structures within 2 km as well as parcel boundaries.

Predicted sound pressure levels at existing residences and land parcel boundaries.

Additional 2 dBA added.

Location: Watertown, SD
Project #: 20174431

Issue Dates

#	Description	Date
1	Original	2019.05.24

Drawn By: AS Checked By: JH

Legend

- Crowned Ridge Wind Turbines
- Crowned Ridge II Wind Turbines
- Dakota Range Wind Turbines
- 2 km Turbine Buffer
- County Lines
- CR1 Project Boundary
- Non Participants
- Participants
- <all other values>

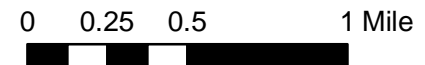
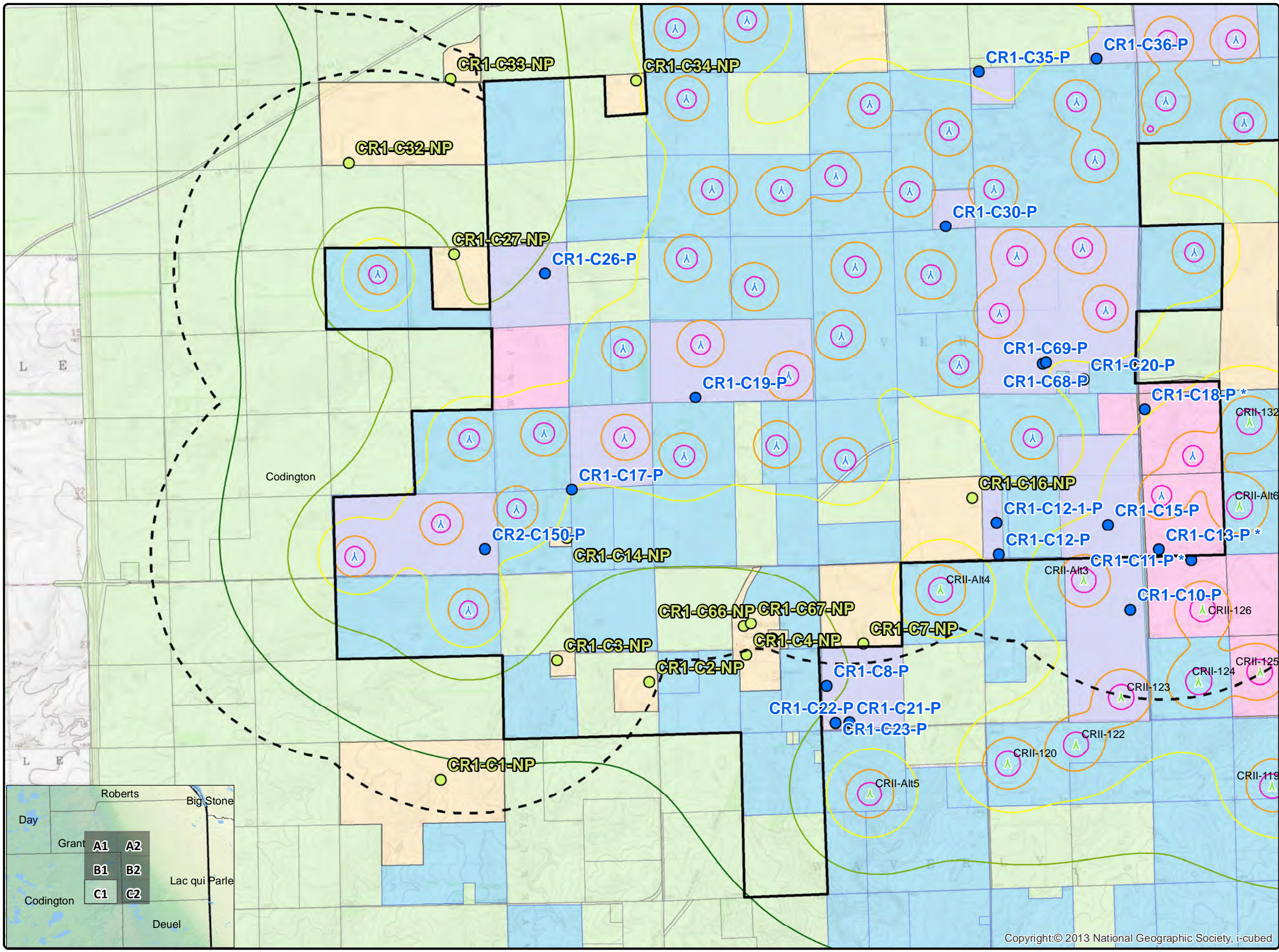
Sound Pressure (dBA)

- 35
- 40
- 45
- 50
- 55

Parcel Status

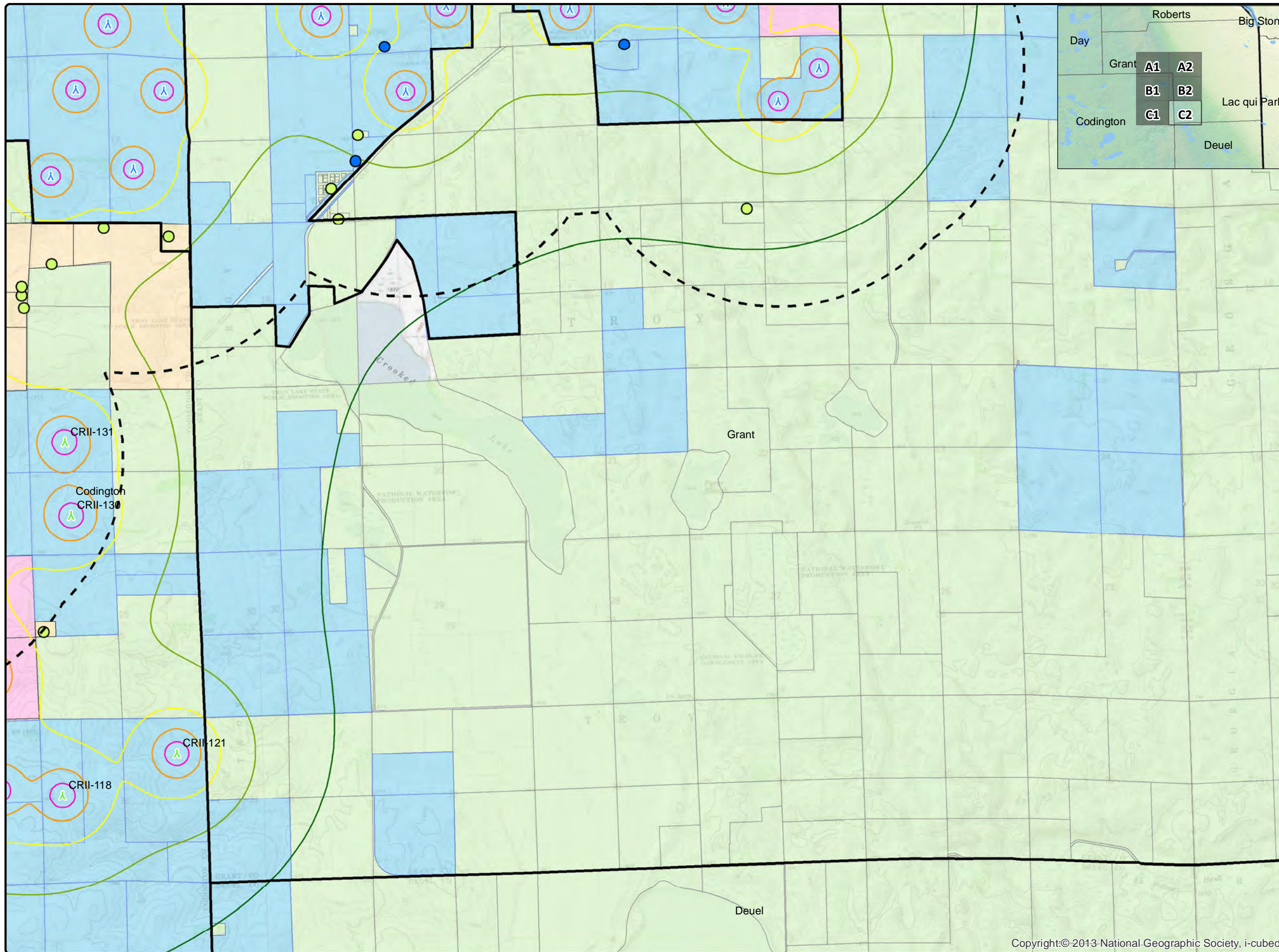
- Participating Codington Parcels
- Non-Participating Codington Parcels
- Participating Parcels
- Pending Parcels
- Non-Participating Parcels

COPYRIGHT:
All maps, plans, specifications, computer files, field data, notes and other documents and instruments prepared by EAPC as instruments of service shall remain the property of EAPC. EAPC shall retain all common law, statutory and other reserved rights, including the copyright thereto.



Neither EAPC nor any person acting on their behalf: (a) makes any warranty, express or implied, with respect to the use of any information disclosed on this drawing; or (b) assumes any liability with respect to the use of any information or methods disclosed on this drawing. Any recipient of this document, by their acceptance or use of this document, releases EAPC, its parent corporations and its affiliates, from any liability for direct, indirect, consequential, or special loss or damage whether arising in contract, warranty, express or implied, tort or otherwise, and irrespective of fault, negligence, and strict liability. The responsibilities for the applications and use of the material contained in this document remain solely with the client.

Copyright:© 2013 National Geographic Society, i-cubed



www.eapc.net | 701.775.3000

Crowned Ridge Wind Farm Sound Pressure Iso-Lines Overview Map

Client
SWCA Environmental Consultants

Project Description
Wind turbine layout with occupied structures within 2 km as well as parcel boundaries.

Predicted sound pressure levels at existing residences and land parcel boundaries.

Additional 2 dBA added.

Location: Watertown, SD
Project #: 20174431

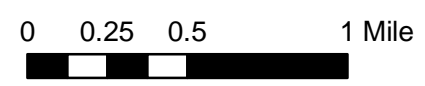
Issue Dates

#	Description	Date
1	Original	2019.05.24

Drawn By: AS Checked By: JH

- Legend**
- Crowned Ridge Wind Turbines
 - Crowned Ridge II Wind Turbines
 - Dakota Range Wind Turbines
 - 2 km Turbine Buffer
 - County Lines
 - CR1 Project Boundary
 - Non Participants
 - Participants
 - <all other values>
- Sound Pressure (dBA)**
- 35
 - 40
 - 45
 - 50
 - 55
- Parcel Status**
- Participating Codington Parcels
 - Non-Participating Codington Parcels
 - Participating Parcels
 - Pending Parcels
 - Non-Participating Parcels

COPYRIGHT:
All maps, plans, specifications, computer files, field data, notes and other documents and instruments prepared by EAPC as instruments of service shall remain the property of EAPC. EAPC shall retain all common law, statutory and other reserved rights, including the copyright thereto.



Neither EAPC nor any person acting on their behalf: (a) makes any warranty, express or implied, with respect to the use of any information disclosed on this drawing; or (b) assumes any liability with respect to the use of any information or methods disclosed on this drawing. Any recipient of this document, by their acceptance or use of this document, releases EAPC, its parent corporations and its affiliates, from any liability for direct, indirect, consequential, or special loss or damage whether arising in contract, warranty, express or implied, tort or otherwise, and irrespective of fault, negligence, and strict liability. The responsibilities for the applications and use of the material contained in this document remain solely with the client.

Copyright:© 2013 National Geographic Society, i-cubed