



www.eapc.net | 701.775.3000

### Crowned Ridge Wind Farm Shadow Flicker Iso-Lines Overview Map

**Client**  
SWCA Environmental Consultants

**Project Description**  
Wind turbine layout with occupied structures within 2 km.  
  
Predicted shadow flicker levels at existing residences.

**Location:** Watertown, SD  
**Project #:** 20174431

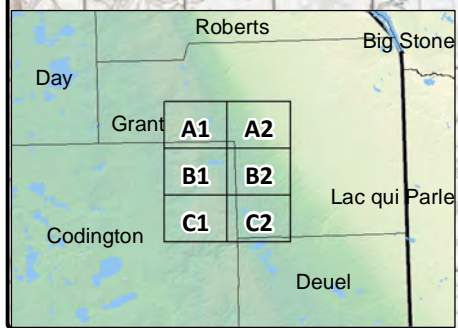
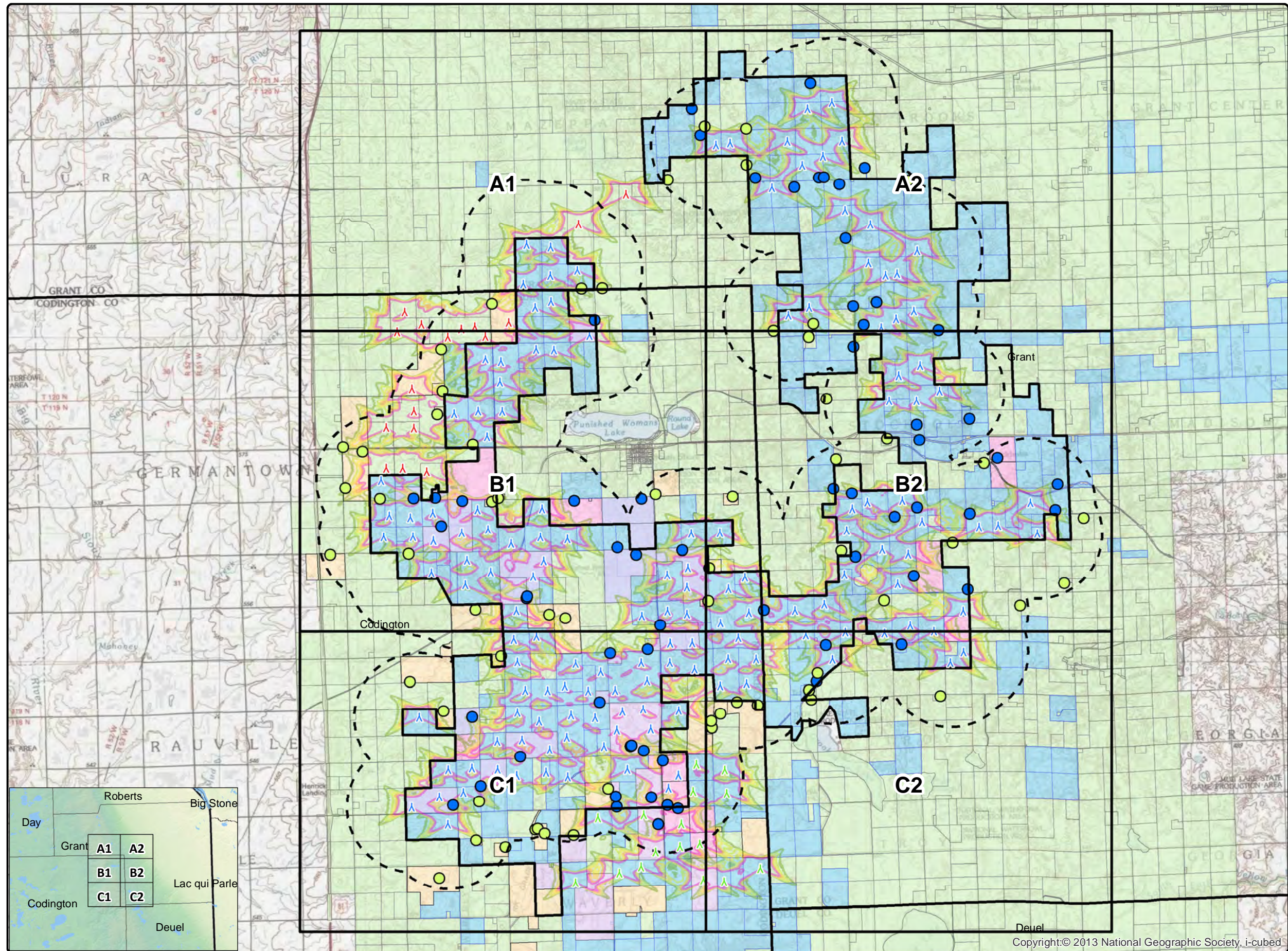
**Issue Dates**

#	Description	Date
1	Original	2019.05.24

Drawn By: AS      Checked By: JH

- Legend**
- Crowned Ridge Wind Turbines
  - Crowned Ridge II Wind Turbines
  - Dakota Range Wind Turbines
  - 2 km Turbine Buffer
  - County Lines
  - CR1 Project Boundary
  - Non Participants
  - Participants
- Shadow Flicker (hr/yr)**
- 10
  - 15
  - 20
  - 25
  - 30
- Non-Participating Codington Parcels
  - Participating Codington Parcels
  - Participating Parcels
  - Pending Parcels
  - Non-Participating Parcels

**COPYRIGHT:**  
All maps, plans, specifications, computer files, field data, notes and other documents and instruments prepared by EAPC as instruments of service shall remain the property of EAPC. EAPC shall retain all common law, statutory and other reserved rights, including the copyright thereto.



Neither EAPC nor any person acting on their behalf: (a) makes any warranty, express or implied, with respect to the use of any information disclosed on this drawing; or (b) assumes any liability with respect to the use of any information or methods disclosed on this drawing. Any recipient of this document, by their acceptance or use of this document, releases EAPC, its parent corporations and its affiliates, from any liability for direct, indirect, consequential, or special loss or damage whether arising in contract, warranty, express or implied, tort or otherwise, and irrespective of fault, negligence, and strict liability. The responsibilities for the applications and use of the material contained in this document remain solely with the client.



www.eapc.net | 701.775.3000

### Crowned Ridge Wind Farm Shadow Flicker Iso-Lines

**Client**  
SWCA Environmental Consultants

**Project Description**  
Wind turbine layout with occupied structures within 2 km.  
  
Predicted shadow flicker levels at existing residences.

**Location:** Watertown, SD  
**Project #:** 20174431

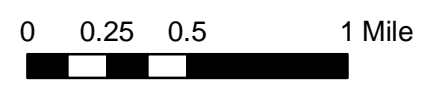
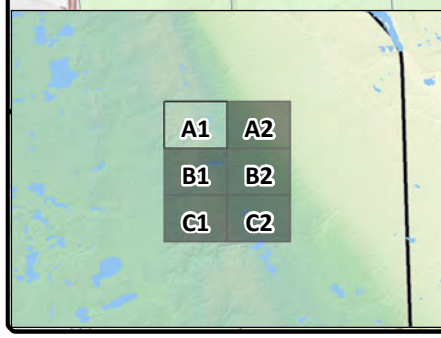
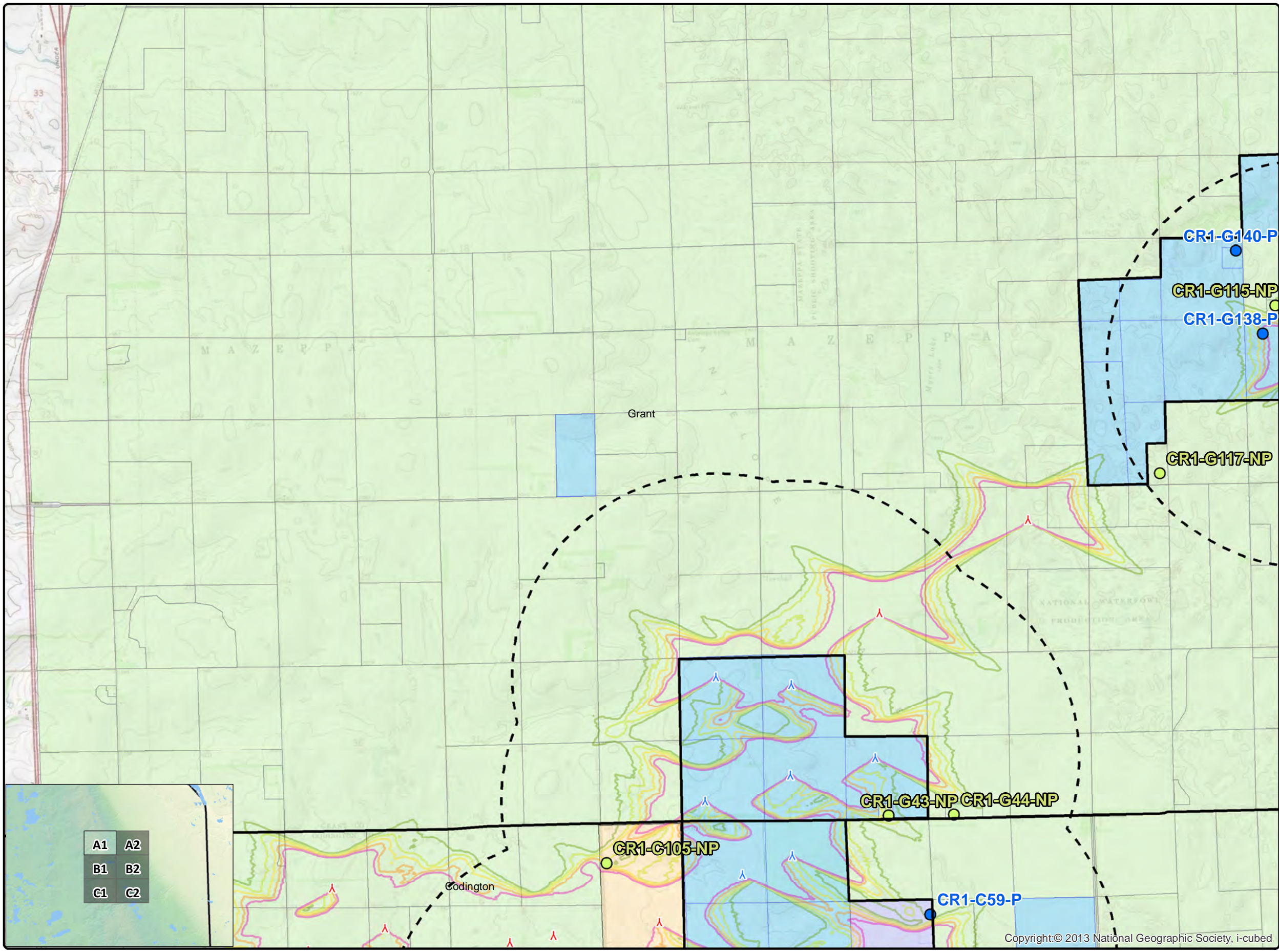
**Issue Dates**

#	Description	Date
1	Original	2019.05.24

Drawn By: AS      Checked By: JH

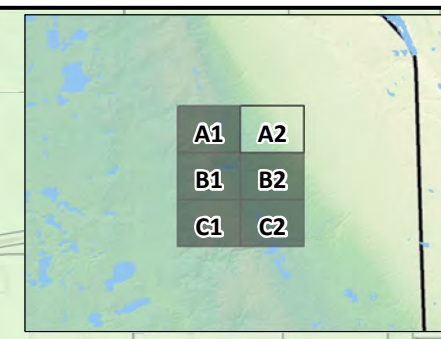
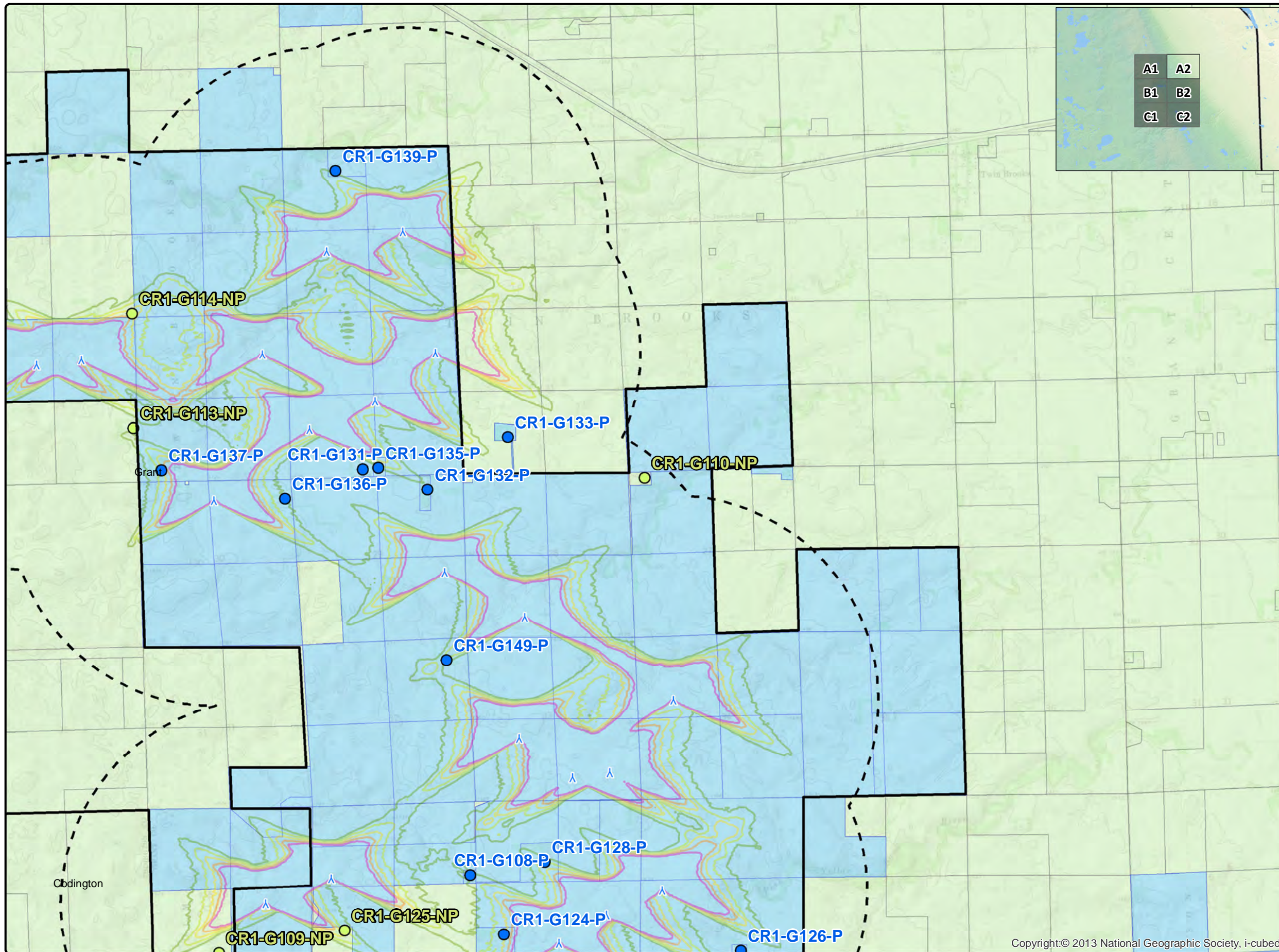
- Legend**
- Crowned Ridge Wind Turbines
  - Crowned Ridge II Wind Turbines
  - Dakota Range Wind Turbines
  - 2 km Turbine Buffer
  - County Lines
  - CR1 Project Boundary
  - Non Participants
  - Participants
- Shadow Flicker (hr/yr)**
- 10
  - 15
  - 20
  - 25
  - 30
- Codington Parcels**
- Non-Participating Codington Parcels
  - Participating Codington Parcels
  - Participating Parcels
  - Pending Parcels
  - Non-Participating Parcels

**COPYRIGHT:**  
All maps, plans, specifications, computer files, field data, notes and other documents and instruments prepared by EAPC as instruments of service shall remain the property of EAPC. EAPC shall retain all common law, statutory and other reserved rights, including the copyright thereto.



Copyright:© 2013 National Geographic Society, i-cubed

Neither EAPC nor any person acting on their behalf: (a) makes any warranty, express or implied, with respect to the use of any information disclosed on this drawing; or (b) assumes any liability with respect to the use of any information or methods disclosed on this drawing. Any recipient of this document, by their acceptance or use of this document, releases EAPC, its parent corporations and its affiliates, from any liability for direct, indirect, consequential, or special loss or damage whether arising in contract, warranty, express or implied, tort or otherwise, and irrespective of fault, negligence, and strict liability. The responsibilities for the applications and use of the material contained in this document remain solely with the client.



www.eapc.net | 701.775.3000

### Crowned Ridge Wind Farm Shadow Flicker Iso-Lines

**Client**  
SWCA Environmental Consultants

**Project Description**  
Wind turbine layout with occupied structures within 2 km.  
  
Predicted shadow flicker levels at existing residences.

**Location:** Watertown, SD  
**Project #:** 20174431

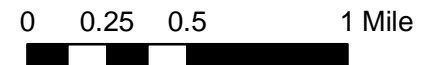
**Issue Dates**

#	Description	Date
1	Original	2019.05.24

Drawn By: AS      Checked By: JH

- Legend**
- Crowned Ridge Wind Turbines
  - Crowned Ridge II Wind Turbines
  - Dakota Range Wind Turbines
  - 2 km Turbine Buffer
  - County Lines
  - CR1 Project Boundary
  - Non Participants
  - Participants
- Shadow Flicker (hr/yr)**
- 10
  - 15
  - 20
  - 25
  - 30
- Non-Participating Codrington Parcels
  - Participating Codrington Parcels
  - Participating Parcels
  - Pending Parcels
  - Non-Participating Parcels

**COPYRIGHT:**  
All maps, plans, specifications, computer files, field data, notes and other documents and instruments prepared by EAPC as instruments of service shall remain the property of EAPC. EAPC shall retain all common law, statutory and other reserved rights, including the copyright thereto.



Neither EAPC nor any person acting on their behalf: (a) makes any warranty, express or implied, with respect to the use of any information disclosed on this drawing; or (b) assumes any liability with respect to the use of any information or methods disclosed on this drawing. Any recipient of this document, by their acceptance or use of this document, releases EAPC, its parent corporations and its affiliates, from any liability for direct, indirect, consequential, or special loss or damage whether arising in contract, warranty, express or implied, tort or otherwise, and irrespective of fault, negligence, and strict liability. The responsibilities for the applications and use of the material contained in this document remain solely with the client.



www.eapc.net | 701.775.3000

### Crowned Ridge Wind Farm Shadow Flicker Iso-Lines

**Client**  
SWCA Environmental Consultants

**Project Description**  
Wind turbine layout with occupied structures within 2 km.  
  
Predicted shadow flicker levels at existing residences.

**Location:** Watertown, SD  
**Project #:** 20174431

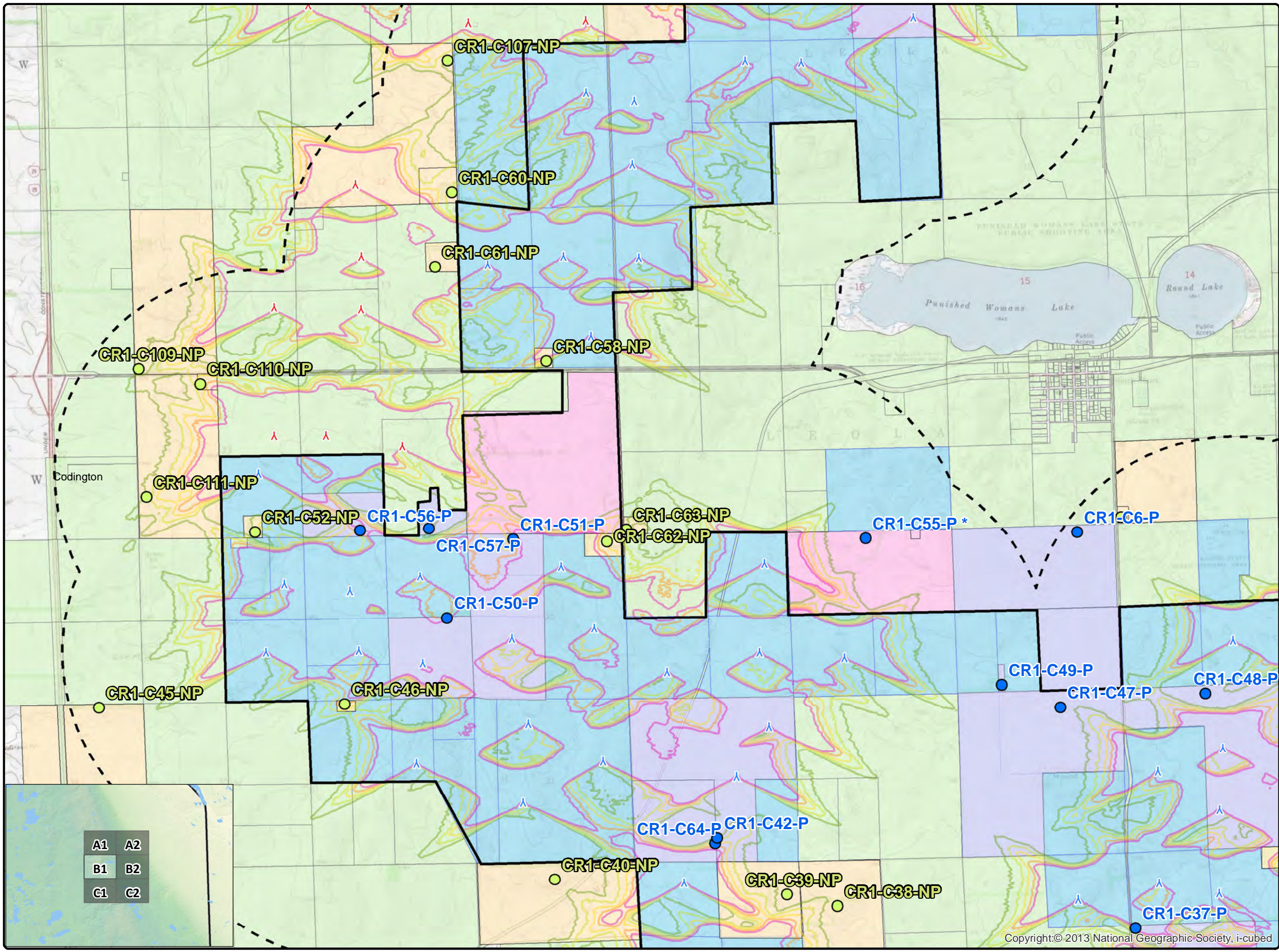
**Issue Dates**

#	Description	Date
1	Original	2019.05.24

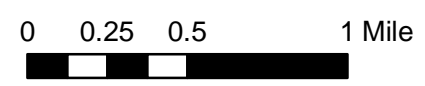
Drawn By: AS      Checked By: JH

- Legend**
- Crowned Ridge Wind Turbines
  - Crowned Ridge II Wind Turbines
  - Dakota Range Wind Turbines
  - 2 km Turbine Buffer
  - County Lines
  - CR1 Project Boundary
  - Non Participants
  - Participants
- Shadow Flicker (hr/yr)**
- 10
  - 15
  - 20
  - 25
  - 30
- Non-Participating Codington Parcels
  - Participating Codington Parcels
  - Participating Parcels
  - Pending Parcels
  - Non-Participating Parcels

**COPYRIGHT:**  
All maps, plans, specifications, computer files, field data, notes and other documents and instruments prepared by EAPC as instruments of service shall remain the property of EAPC. EAPC shall retain all common law, statutory and other reserved rights, including the copyright thereto.

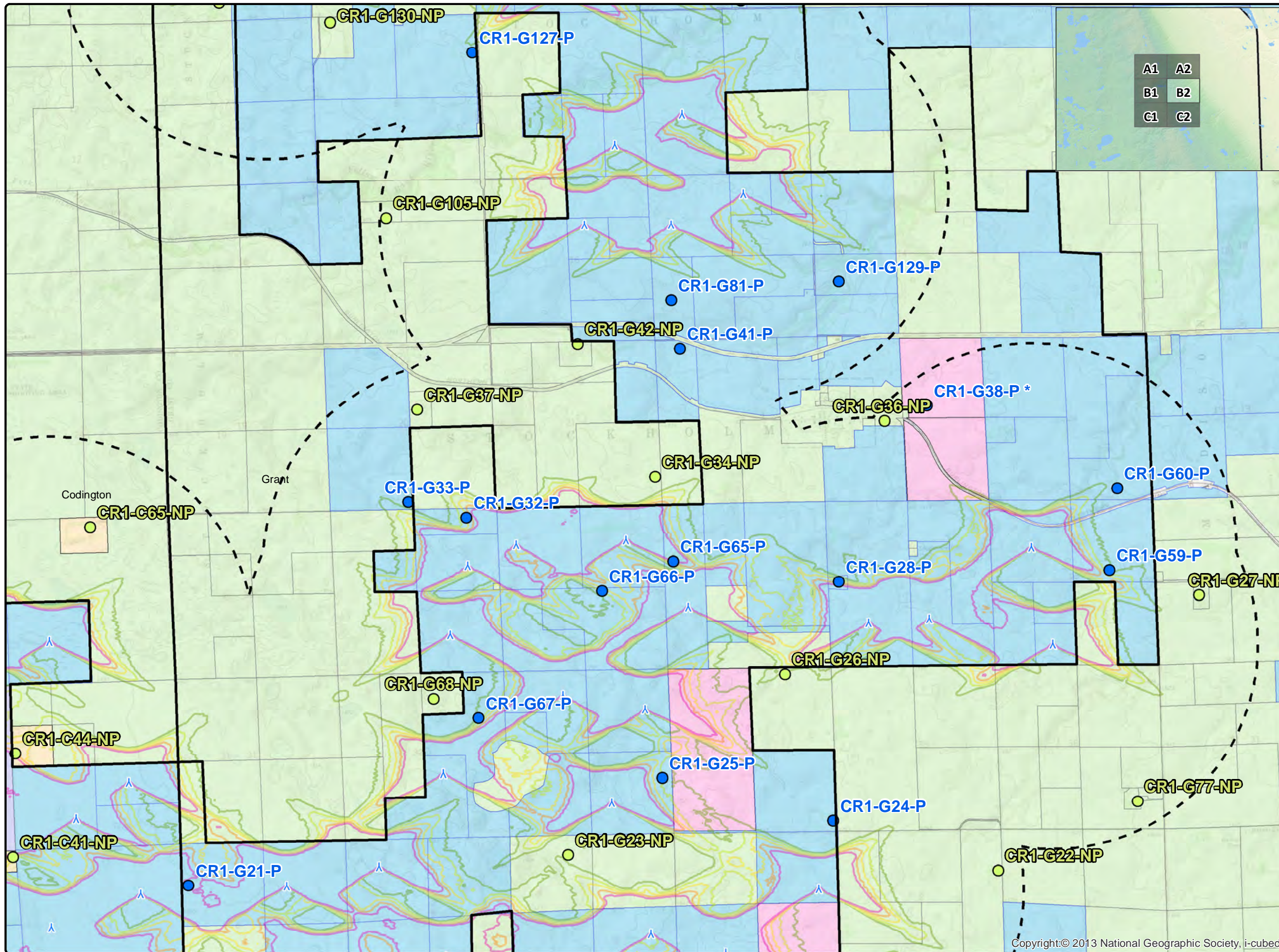


A1	A2
B1	B2
C1	C2



Neither EAPC nor any person acting on their behalf: (a) makes any warranty, express or implied, with respect to the use of any information disclosed on this drawing; or (b) assumes any liability with respect to the use of any information or methods disclosed on this drawing. Any recipient of this document, by their acceptance or use of this document, releases EAPC, its parent corporations and its affiliates, from any liability for direct, indirect, consequential, or special loss or damage whether arising in contract, warranty, express or implied, tort or otherwise, and irrespective of fault, negligence, and strict liability. The responsibilities for the applications and use of the material contained in this document remain solely with the client.

Copyright:© 2013 National Geographic Society, i-cubed




**EAPC**  
WIND ENERGY

www.eapc.net | 701.775.3000

**Crowned Ridge Wind Farm  
Shadow Flicker Iso-Lines**

*Client*  
SWCA Environmental Consultants

*Project Description*  
Wind turbine layout with occupied structures within 2 km.  
  
Predicted shadow flicker levels at existing residences.

*Location:* Watertown, SD  
*Project #:* 20174431

*Issue Dates*

#	Description	Date
1	Original	2019.05.24

Drawn By: AS      Checked By: JH

**Legend**


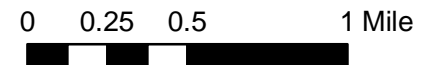
- Crowned Ridge Wind Turbines
- Crowned Ridge II Wind Turbines
- Dakota Range Wind Turbines
- 2 km Turbine Buffer
- County Lines
- CR1 Project Boundary
- Non Participants
- Participants

**Shadow Flicker (hr/yr)**

- 10
- 15
- 20
- 25
- 30

- Non-Participating Codington Parcels
- Participating Codington Parcels
- Participating Parcels
- Pending Parcels
- Non-Participating Parcels

COPYRIGHT:  
All maps, plans, specifications, computer files, field data, notes and other documents and instruments prepared by EAPC as instruments of service shall remain the property of EAPC. EAPC shall retain all common law, statutory and other reserved rights, including the copyright thereto.

Neither EAPC nor any person acting on their behalf: (a) makes any warranty, express or implied, with respect to the use of any information disclosed on this drawing; or (b) assumes any liability with respect to the use of any information or methods disclosed on this drawing. Any recipient of this document, by their acceptance or use of this document, releases EAPC, its parent corporations and its affiliates, from any liability for direct, indirect, consequential, or special loss or damage whether arising in contract, warranty, express or implied, tort or otherwise, and irrespective of fault, negligence, and strict liability. The responsibilities for the applications and use of the material contained in this document remain solely with the client.



www.eapc.net | 701.775.3000

### Crowned Ridge Wind Farm Shadow Flicker Iso-Lines

**Client**  
SWCA Environmental Consultants

**Project Description**  
Wind turbine layout with occupied structures within 2 km.  
  
Predicted shadow flicker levels at existing residences.

**Location:** Watertown, SD  
**Project #:** 20174431

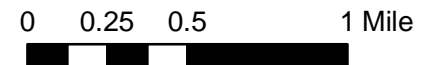
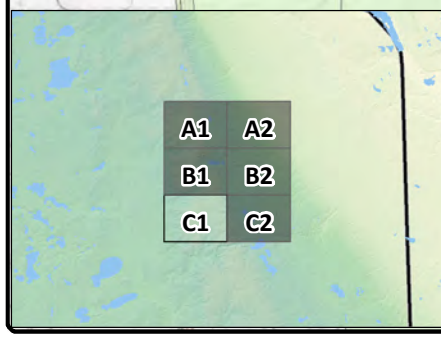
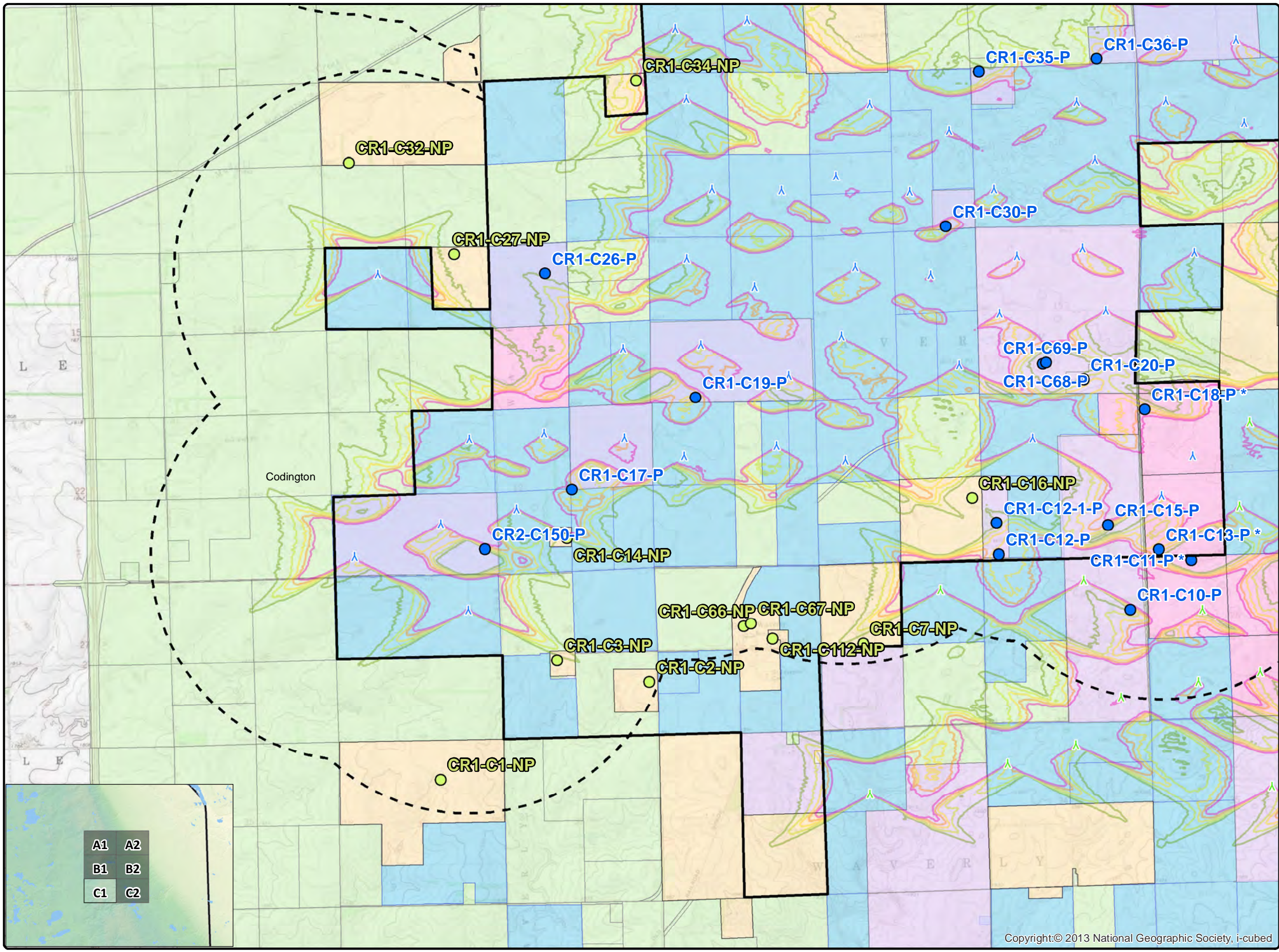
**Issue Dates**

#	Description	Date
1	Original	2019.05.24

Drawn By: AS      Checked By: JH

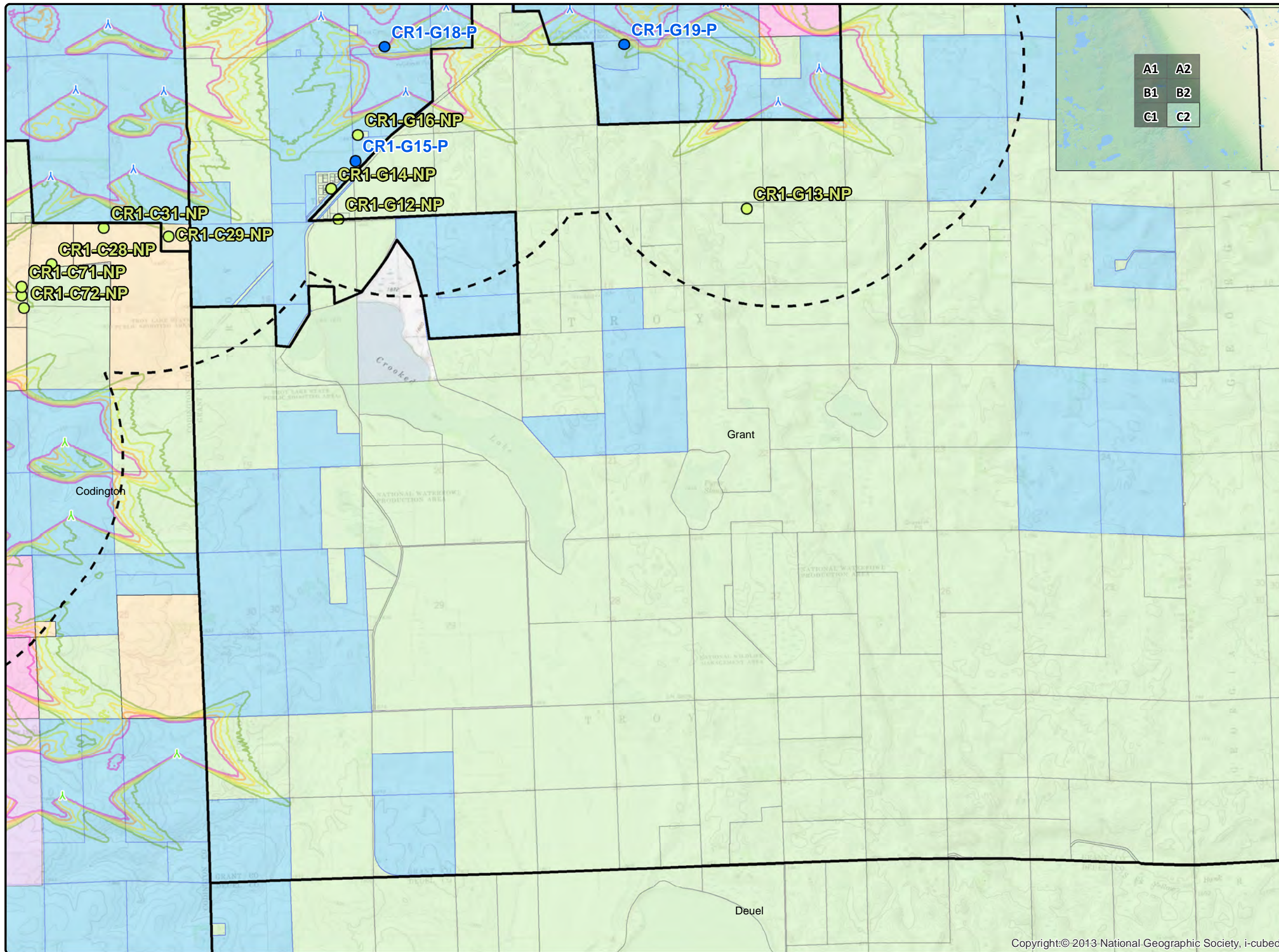
- Legend**
- Crowned Ridge Wind Turbines
  - Crowned Ridge II Wind Turbines
  - Dakota Range Wind Turbines
  - 2 km Turbine Buffer
  - County Lines
  - CR1 Project Boundary
  - Non Participants
  - Participants
- Shadow Flicker (hr/yr)**
- 10
  - 15
  - 20
  - 25
  - 30
- Non-Participating Codington Parcels
  - Participating Codington Parcels
  - Participating Parcels
  - Pending Parcels
  - Non-Participating Parcels

**COPYRIGHT:**  
All maps, plans, specifications, computer files, field data, notes and other documents and instruments prepared by EAPC as instruments of service shall remain the property of EAPC. EAPC shall retain all common law, statutory and other reserved rights, including the copyright thereto.



Copyright:© 2013 National Geographic Society, i-cubed

Neither EAPC nor any person acting on their behalf: (a) makes any warranty, express or implied, with respect to the use of any information disclosed on this drawing; or (b) assumes any liability with respect to the use of any information or methods disclosed on this drawing. Any recipient of this document, by their acceptance or use of this document, releases EAPC, its parent corporations and its affiliates, from any liability for direct, indirect, consequential, or special loss or damage whether arising in contract, warranty, express or implied, tort or otherwise, and irrespective of fault, negligence, and strict liability. The responsibilities for the applications and use of the material contained in this document remain solely with the client.




www.eapc.net | 701.775.3000

### Crowned Ridge Wind Farm Shadow Flicker Iso-Lines

*Client*  
SWCA Environmental Consultants

*Project Description*  
Wind turbine layout with occupied structures within 2 km.  
  
Predicted shadow flicker levels at existing residences.

*Location:* Watertown, SD  
*Project #:* 20174431

*Issue Dates*

#	Description	Date
1	Original	2019.05.24

Drawn By: AS      Checked By: JH

**Legend**


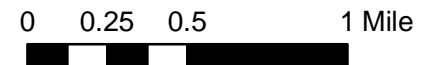
- Crowned Ridge Wind Turbines
- Crowned Ridge II Wind Turbines
- Dakota Range Wind Turbines
- 2 km Turbine Buffer
- County Lines
- CR1 Project Boundary
- Non Participants
- Participants

**Shadow Flicker (hr/yr)**

- 10
- 15
- 20
- 25
- 30

- Non-Participating Codrington Parcels
- Participating Codrington Parcels
- Participating Parcels
- Pending Parcels
- Non-Participating Parcels

**COPYRIGHT:**  
All maps, plans, specifications, computer files, field data, notes and other documents and instruments prepared by EAPC as instruments of service shall remain the property of EAPC. EAPC shall retain all common law, statutory and other reserved rights, including the copyright thereto.

Neither EAPC nor any person acting on their behalf: (a) makes any warranty, express or implied, with respect to the use of any information disclosed on this drawing; or (b) assumes any liability with respect to the use of any information or methods disclosed on this drawing. Any recipient of this document, by their acceptance or use of this document, releases EAPC, its parent corporations and its affiliates, from any liability for direct, indirect, consequential, or special loss or damage whether arising in contract, warranty, express or implied, tort or otherwise, and irrespective of fault, negligence, and strict liability. The responsibilities for the applications and use of the material contained in this document remain solely with the client.

Copyright:© 2013 National Geographic Society, i-cubed