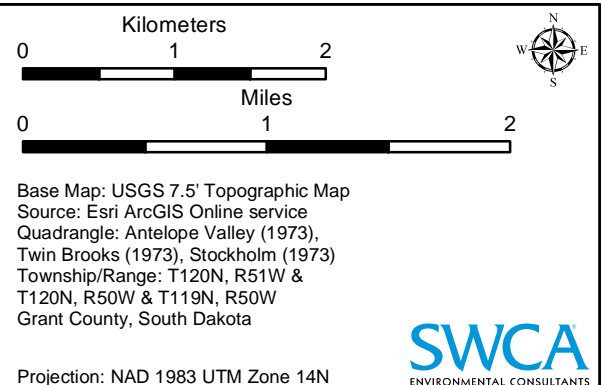
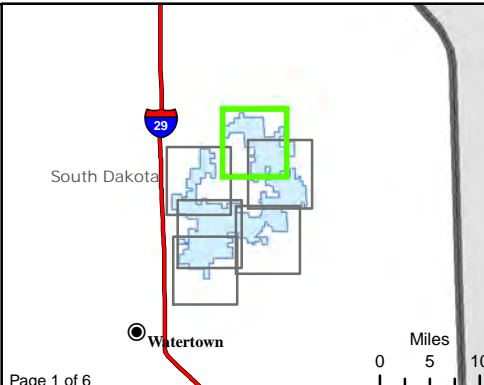
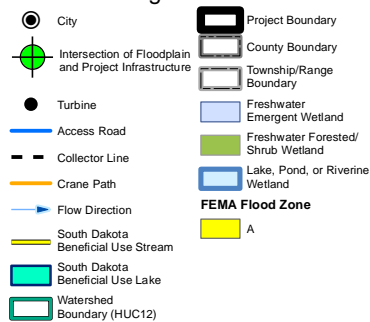


Figure 12. Water Resources
Crowned Ridge Wind Farm



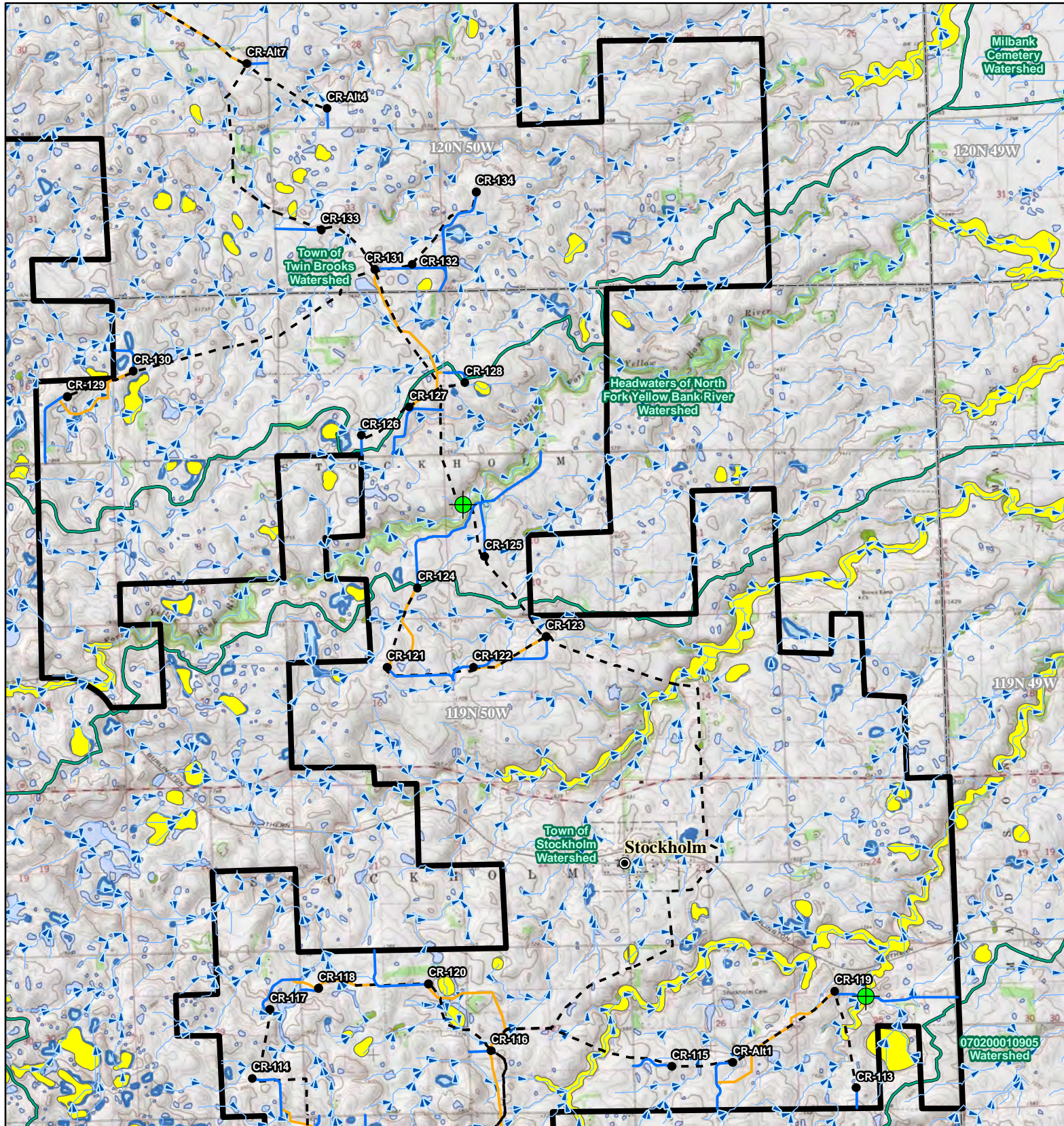
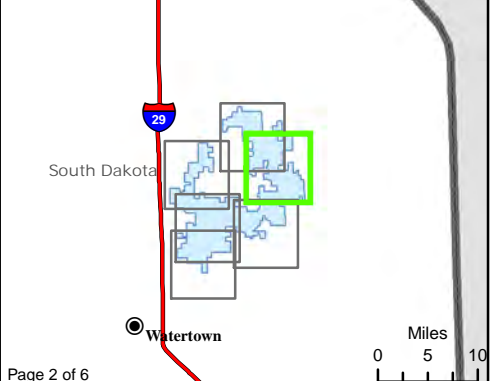


Figure 12. Water Resources
Crowned Ridge Wind Farm

- | | |
|---|-------------------------------------|
| ● City | ▬ Project Boundary |
| ● Intersection of Floodplain and Project Infrastructure | ▬ County Boundary |
| ● Turbine | ▬ Township/Range Boundary |
| — Access Road | ▬ Freshwater Emergent Wetland |
| - - Collector Line | ▬ Freshwater Forested/Shrub Wetland |
| — Crane Path | ▬ Lake, Pond, or Riverine Wetland |
| — Flow Direction | FEMA Flood Zone |
| — South Dakota Beneficial Use Stream | ▬ A |
| ▬ South Dakota Beneficial Use Lake | |
| ▬ Watershed Boundary (HUC12) | |



Kilometers

0 1 2

Miles

0 1 2

Base Map: USGS 7.5' Topographic Map
Source: Esri ArcGIS Online service
Quadrangle: Twin Brooks (1973),
Stockholm (1973)
Township/Range: T120N, R50W &
T119N, R50W
Grant County, South Dakota

Projection: NAD 1983 UTM Zone 14N

SWCA
ENVIRONMENTAL CONSULTANTS

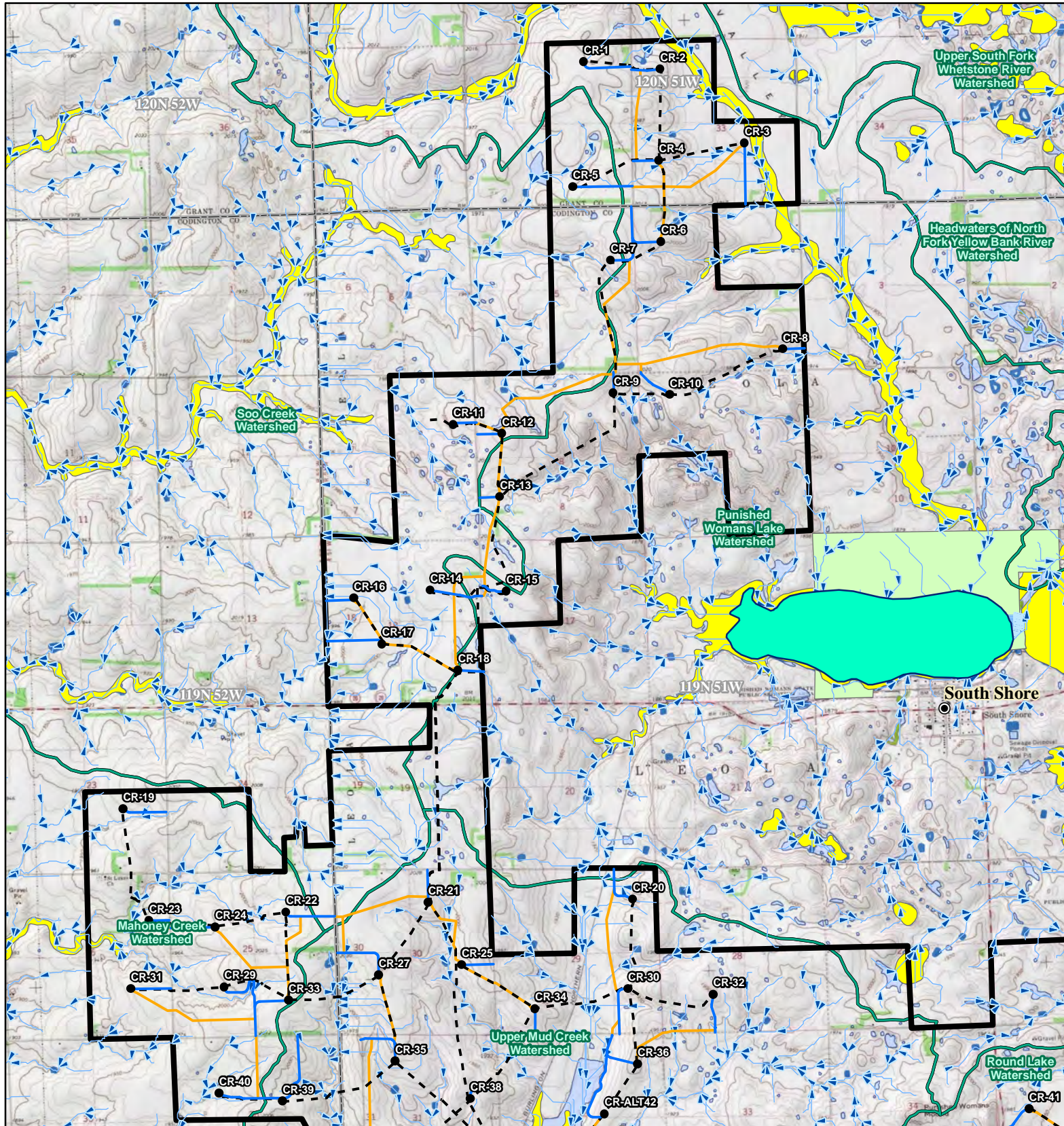
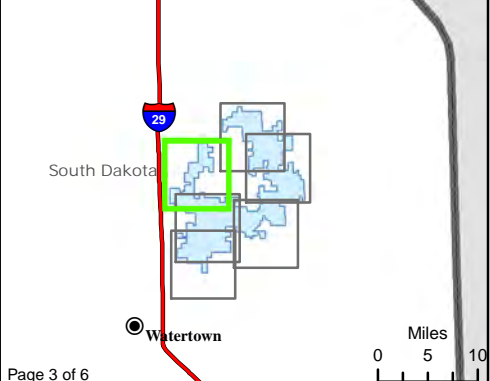


Figure 12. Water Resources
Crowned Ridge Wind Farm

- City
- Intersection of Floodplain and Project Infrastructure
- Turbine
- Access Road
- Collector Line
- Crane Path
- Flow Direction
- South Dakota Beneficial Use Stream
- South Dakota Beneficial Use Lake
- Watershed Boundary (HUC12)
- Project Boundary
- County Boundary
- Township/Range Boundary
- Freshwater Emergent Wetland
- Freshwater Forested/Shrub Wetland
- Lake, Pond, or Riverine Wetland
- FEMA Flood Zone**
 - A
 - D



Kilometers

0 1 2

Miles

0 1 2

Base Map: USGS 7.5' Topographic Map
Source: Esri ArcGIS Online service
Quadrangle: Antelope Valley (1973),
Still Lake SE (1970), South Shore (1973)
Township/Range: T120N, R51W &
T119N, R52W & T119N, R51W
Codington and Grant Counties, South Dakota

Projection: NAD 1983 UTM Zone 14N

SWCA
ENVIRONMENTAL CONSULTANTS

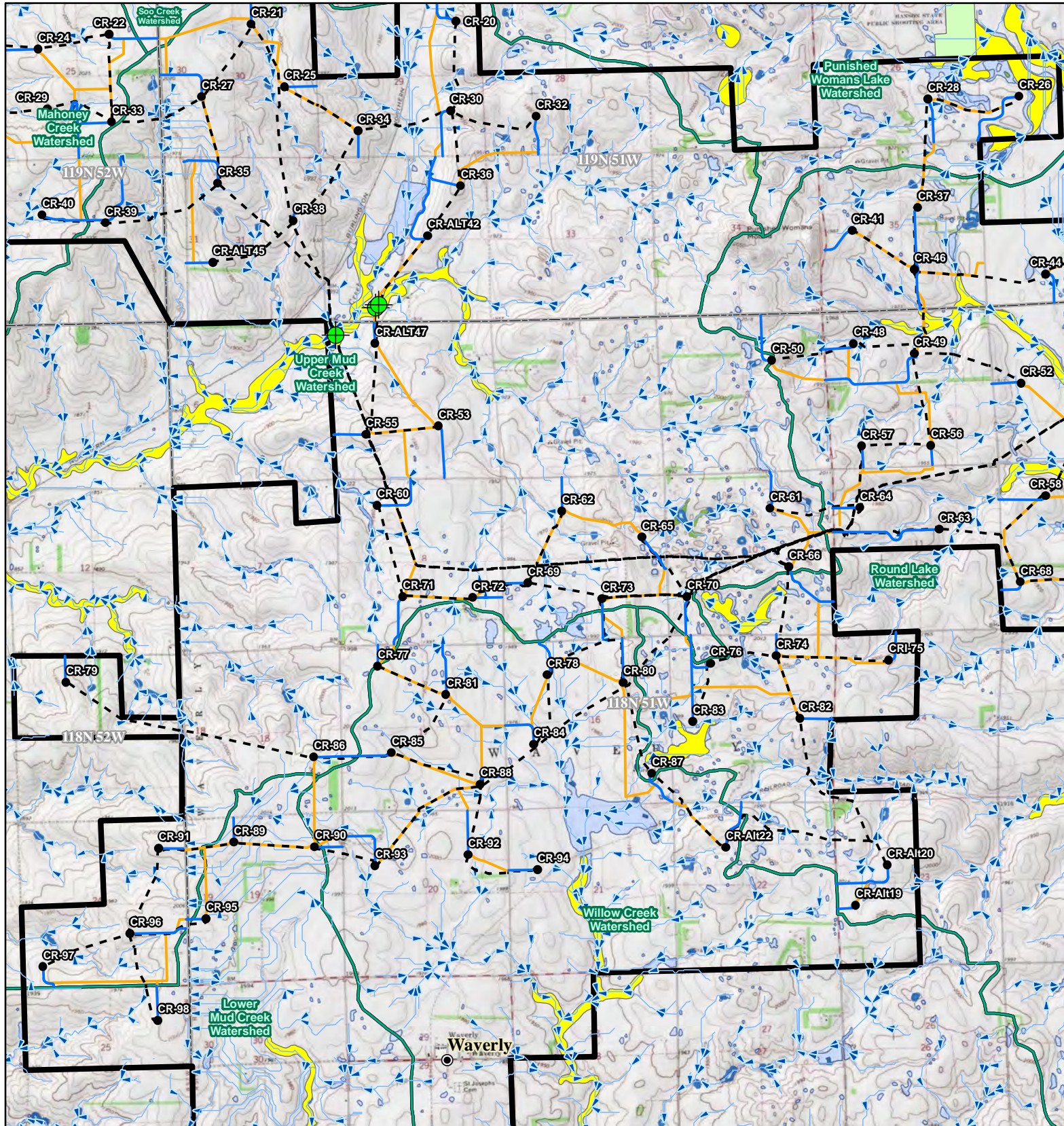
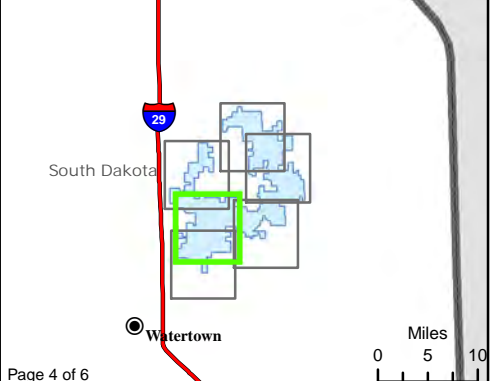


Figure 12. Water Resources
Crowned Ridge Wind Farm

- City
- Intersection of Floodplain and Project Infrastructure
- Turbine
- Access Road
- Collector Line
- Crane Path
- Flow Direction
- South Dakota Beneficial Use Stream
- South Dakota Beneficial Use Lake
- Watershed Boundary (HUC12)
- ▬ Project Boundary
- ▬ County Boundary
- ▬ Township/Range Boundary
- ▬ Freshwater Emergent Wetland
- ▬ Freshwater Forested/Shrub Wetland
- ▬ Lake, Pond, or Riverine Wetland
- FEMA Flood Zone**
 - A
 - D



Kilometers

0 1 2

Miles

0 1 2

Base Map: USGS 7.5' Topographic Map
 Source: Esri ArcGIS Online service
 Quadrangle: Still Lake SE (1970), South Shore (1973),
 Watertown East (1969), Kranzburg (1970)
 Township/Range: T119N, R52W & T119N, R51W &
 T118N, R52W & T118N, R51W
 Codington County, South Dakota

Projection: NAD 1983 UTM Zone 14N

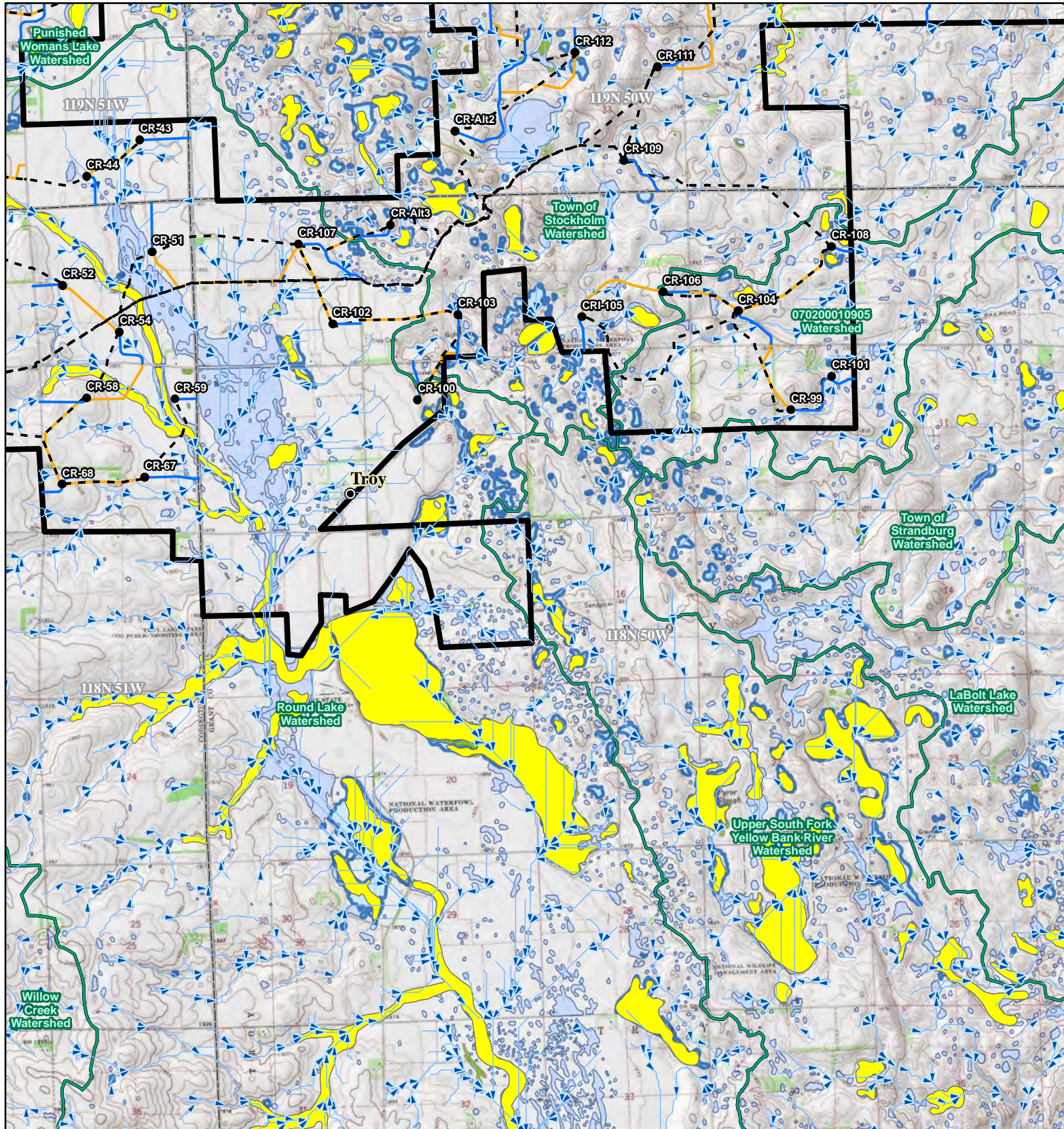
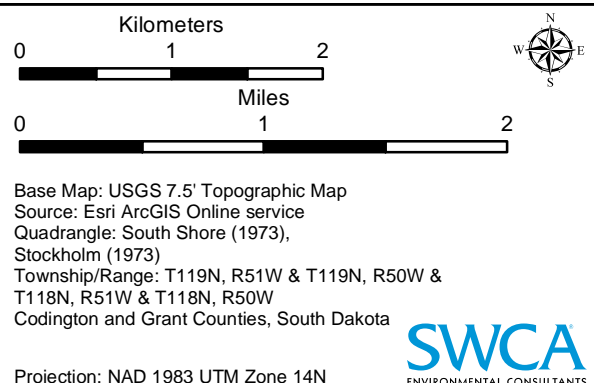
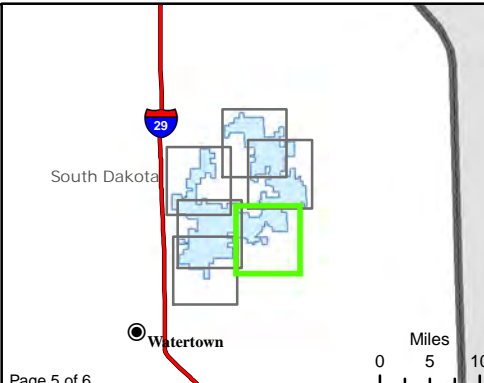
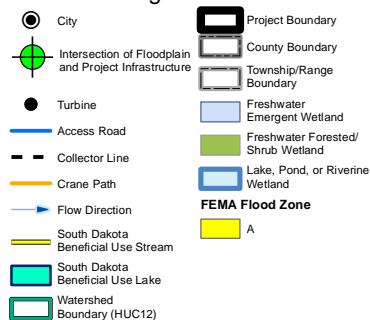


Figure 12. Water Resources
Crowned Ridge Wind Farm



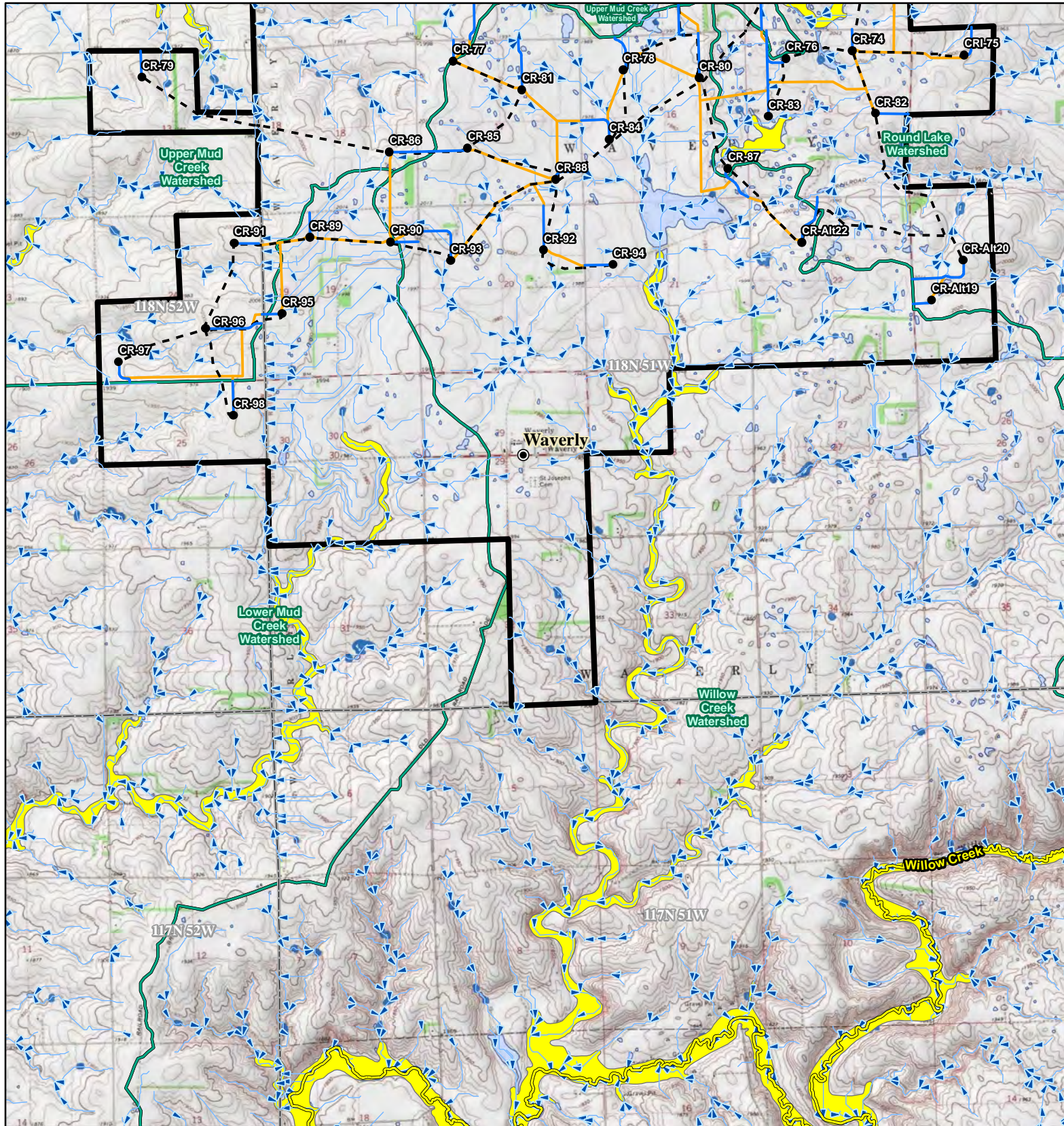
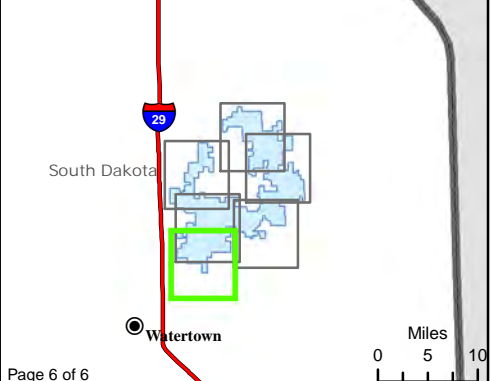


Figure 12. Water Resources
Crowned Ridge Wind Farm

- City
- Intersection of Floodplain and Project Infrastructure
- Turbine
- Access Road
- Collector Line
- Crane Path
- Flow Direction
- South Dakota Beneficial Use Stream
- South Dakota Beneficial Use Lake
- Watershed Boundary (HUC12)
- Project Boundary
- County Boundary
- Township/Range Boundary
- Freshwater Emergent Wetland
- Freshwater Forested/Shrub Wetland
- Lake, Pond, or Riverine Wetland
- FEMA Flood Zone**
- A**



Kilometers

0 1 2

Miles

0 1 2

Base Map: USGS 7.5' Topographic Map
Source: Esri ArcGIS Online service
Quadrangle: Still Lake SE (1970), South Shore (1973), Watertown East (1969), Kranzburg (1970)
Township/Range: T118N, R52W & T118N, R51W
Codington County, South Dakota

Projection: NAD 1983 UTM Zone 14N