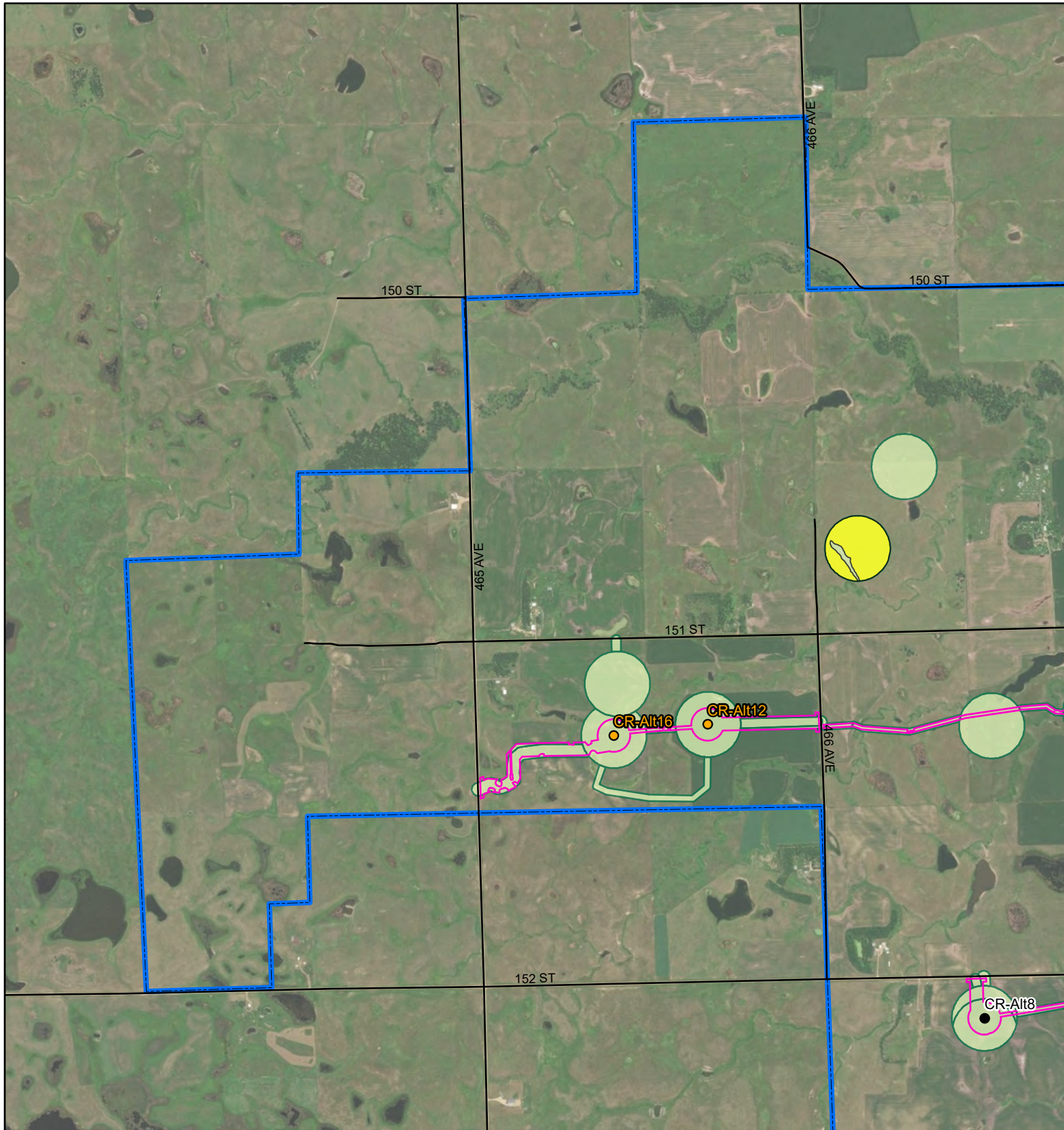


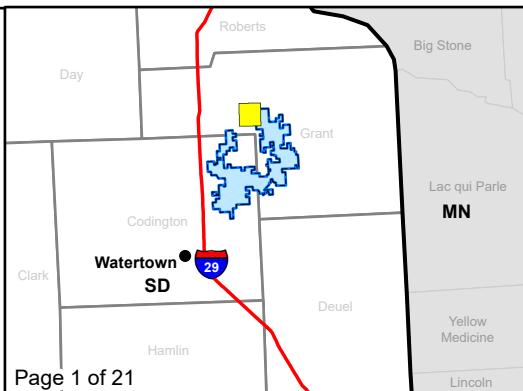
APPENDIX B

Dakota Skipper Habitat and Survey Area Mapbook



Dakota Skipper Crowned Ridge Wind Farm

- Primary Turbine
- Alternate Turbine
- ⦿ City
- Construction Easement
- Existing Road
- Field-Assessed Dakota Skipper Habitat
- Field-Assessed Dakota Skipper Habitat and Presence/Absence Survey Location 2018
- O&M Facility/ Substation
- Batch Plant
- Laydown Yard
- Survey Area
- Project Boundary
- County Boundary

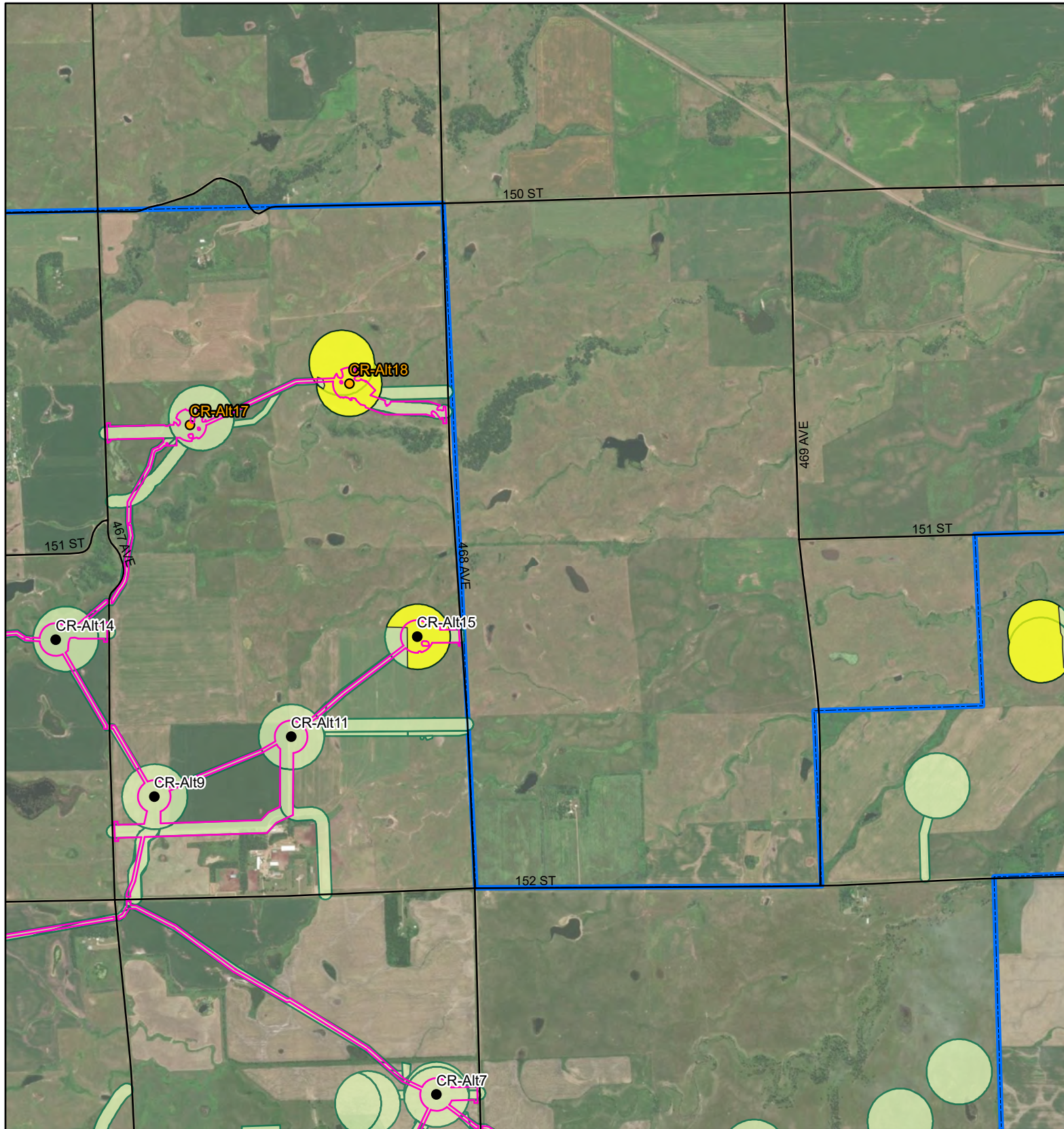


Kilometers
 0 0.5 1
 Miles
 0 0.25 0.5

Service Layer Credits: Esri, HERE, Garmin, © OpenStreetMap contributors, and the GIS user community
 Quadrangle: Antelope Valley (1973), Twin Brooks (1973)
 Township/Range: T120N, R51W, T120N, R50W
 Grant County, South Dakota

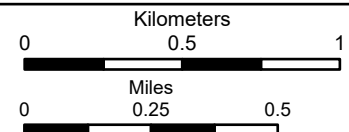
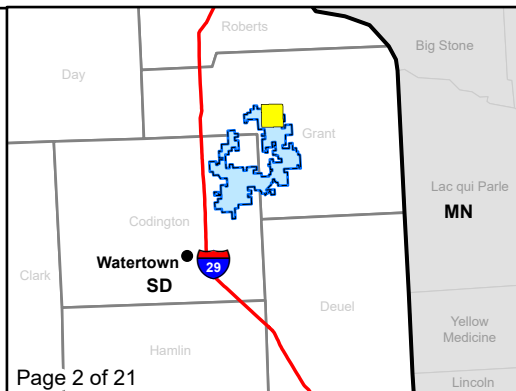
Projection:

SWCA
 ENVIRONMENTAL CONSULTANTS



Dakota Skipper Crowned Ridge Wind Farm

- Primary Turbine
- Alternate Turbine
- City
- Construction Easement
- Existing Road
- Field-Assessed Dakota Skipper Habitat
- Field-Assessed Dakota Skipper Habitat and Presence/Absence Survey Location 2018
- O&M Facility/Substation
- Batch Plant
- Laydown Yard
- Survey Area
- Project Boundary
- County Boundary



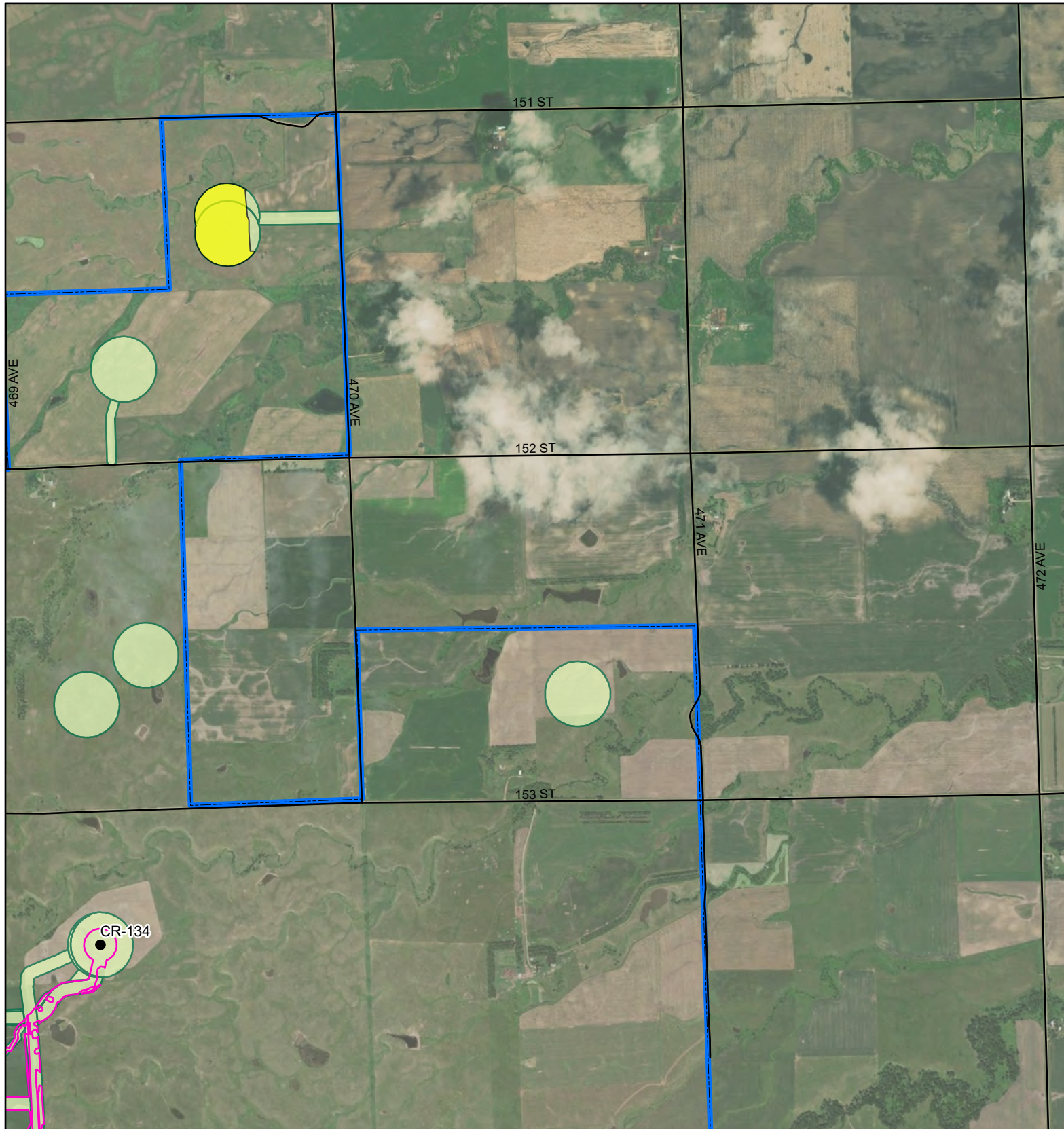
Service Layer Credits: Esri, HERE, Garmin,
© OpenStreetMap contributors, and the GIS user
community
Quadrangle: Twin Brooks (1973)

Township/Range: T120N, R50W

Grant County, South Dakota

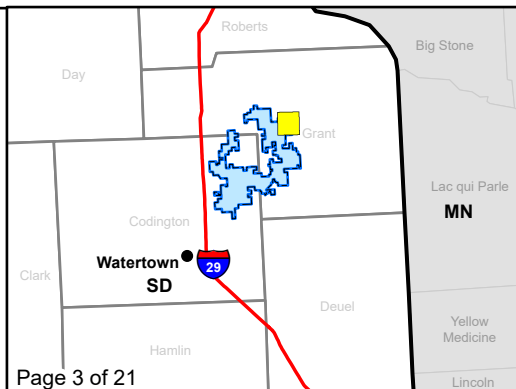
Projection:

SWCA
ENVIRONMENTAL CONSULTANTS

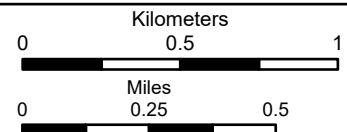


Dakota Skipper Crowned Ridge Wind Farm

- Primary Turbine
- Alternate Turbine
- City
- Construction Easement
- Existing Road
- Field-Assessed Dakota Skipper Habitat
- Field-Assessed Dakota Skipper Habitat and Presence/Absence Survey Location 2018
- O&M Facility/Substation
- Batch Plant
- Laydown Yard
- Survey Area
- Project Boundary
- County Boundary



Page 3 of 21



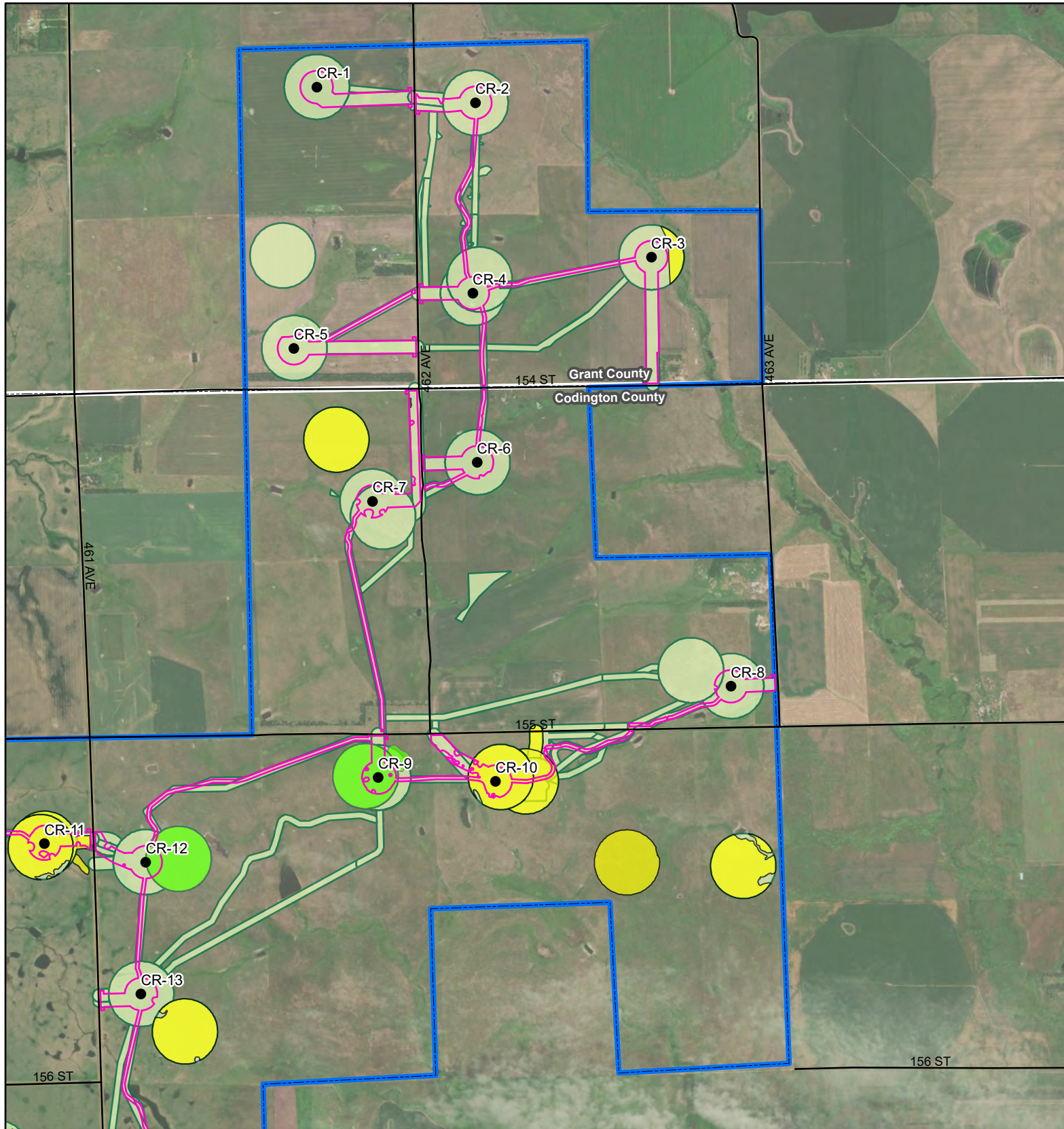
Service Layer Credits: Esri, HERE, Garmin,
© OpenStreetMap contributors, and the GIS user
community
Quadrangle: Twin Brooks (1973)

Township/Range: T120N, R50W

Grant County, South Dakota

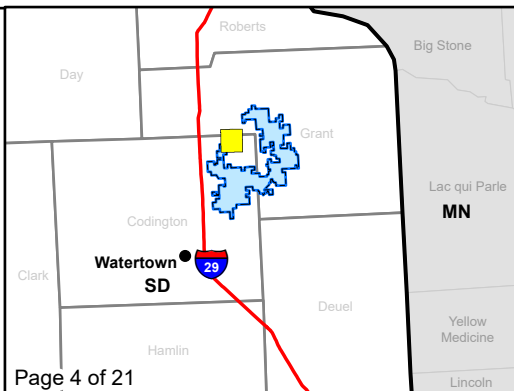
Projection:

SWCA
ENVIRONMENTAL CONSULTANTS

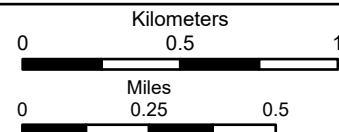


Dakota Skipper Crowded Ridge Wind Farm

- Primary Turbine
- Alternate Turbine
- City
- Construction Easement
- Existing Road
- Field-Assessed Dakota Skipper Habitat
- Field-Assessed Dakota Skipper Habitat and Presence/Absence Survey Location 2018
- O&M Facility/Substation
- Batch Plant
- Laydown Yard
- Survey Area
- Project Boundary
- County Boundary



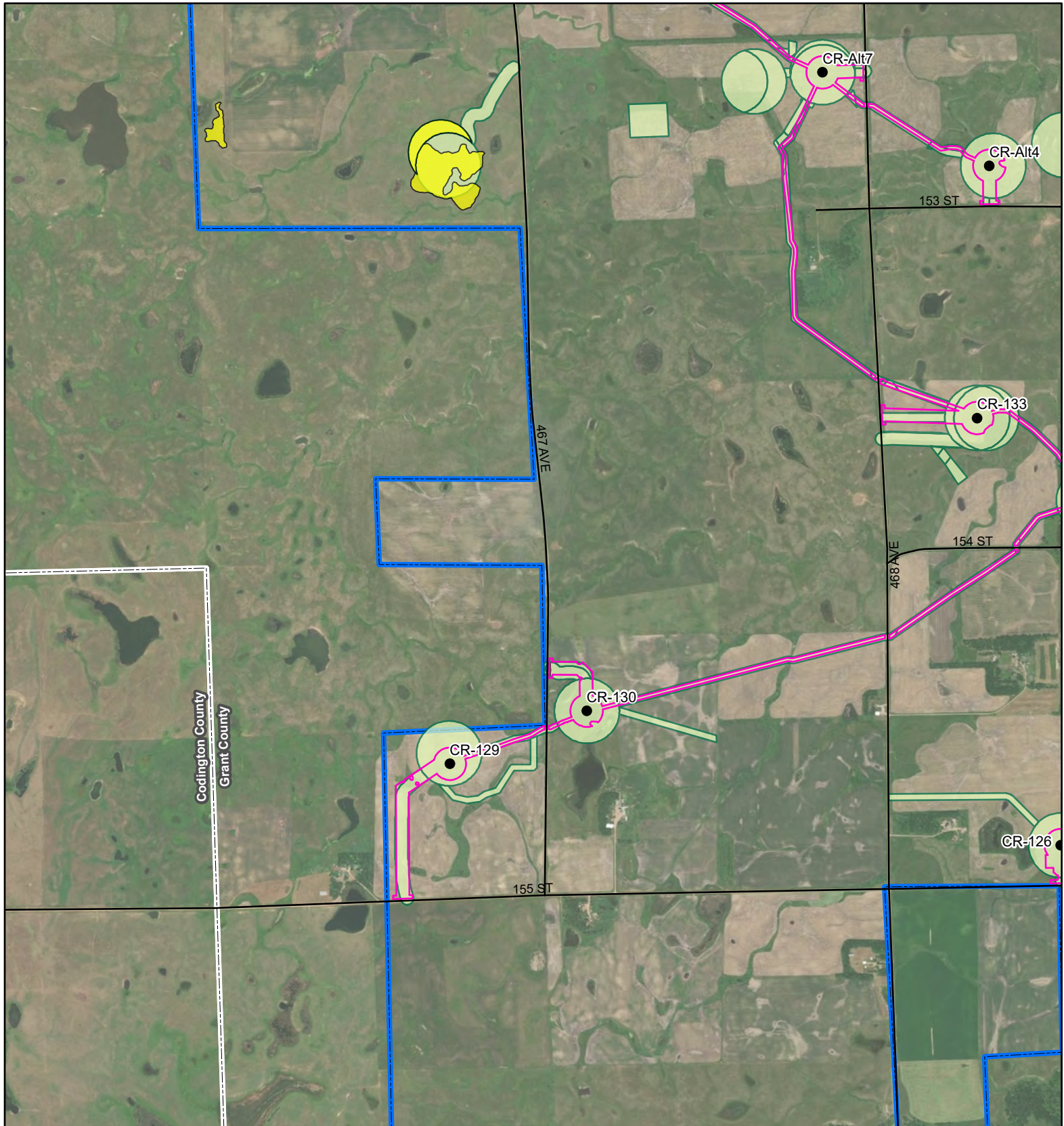
Page 4 of 21



Service Layer Credits: Esri, HERE, Garmin, © OpenStreetMap contributors, and the GIS user community
 Quadrangle: Antelope Valley (1973), South Shore (1973)
 Township/Range: T120N, R51W, T119N, R51W,
 Codington and Grant Counties, South Dakota

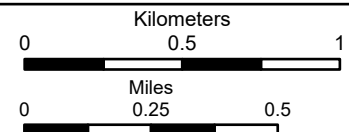
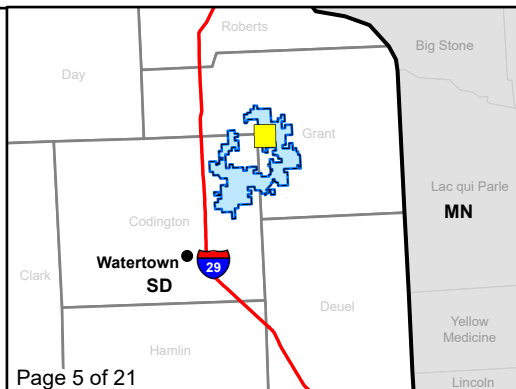
Projection:

SWCA
 ENVIRONMENTAL CONSULTANTS



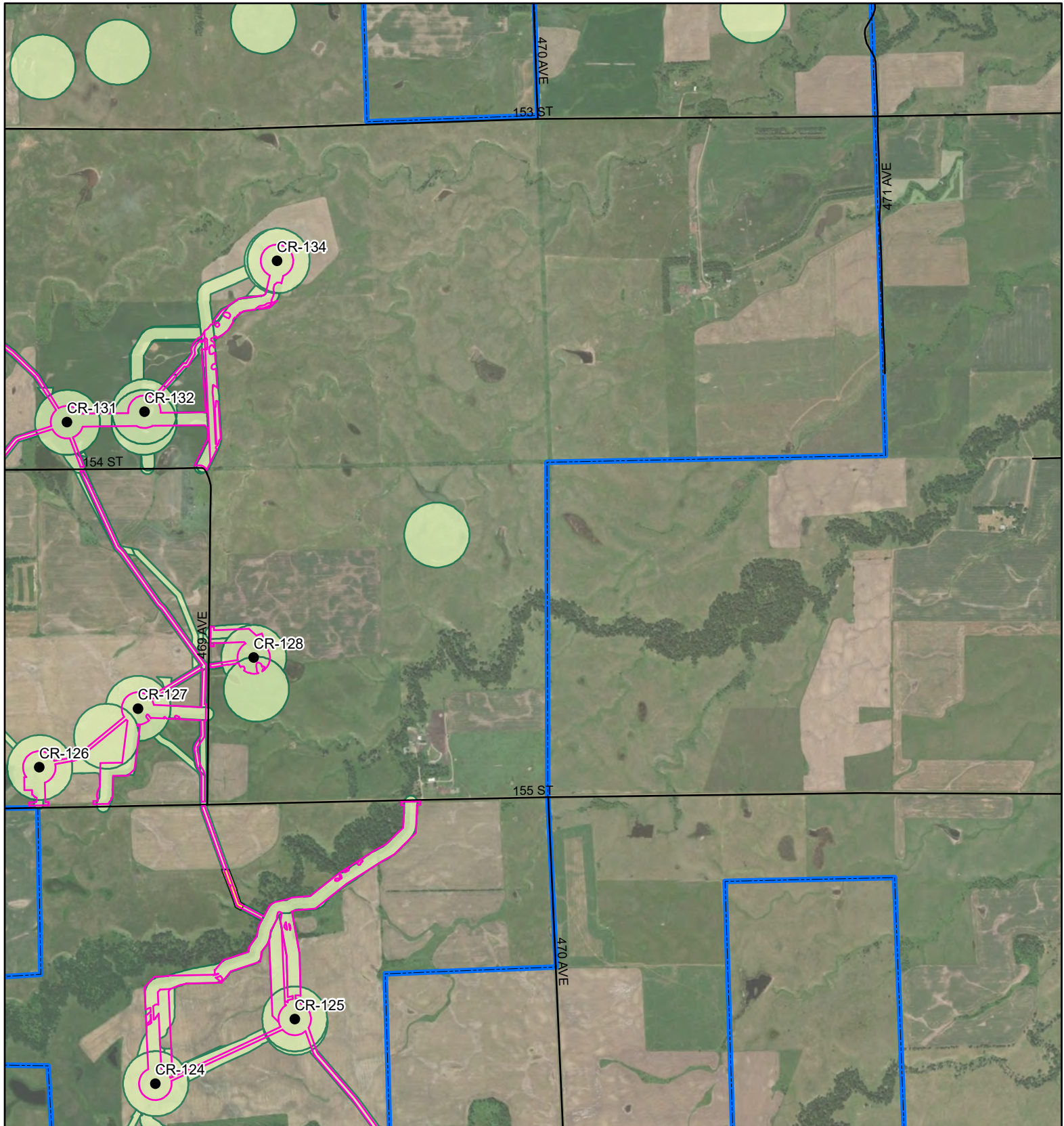
Dakota Skipper Crowned Ridge Wind Farm

- Primary Turbine
- Alternate Turbine
- City
- Construction Easement
- Existing Road
- Field-Assessed Dakota Skipper Habitat
- Field-Assessed Dakota Skipper Habitat and Presence/Absence Survey Location 2018
- O&M Facility/ Substation
- Batch Plant
- Laydown Yard
- Survey Area
- Project Boundary
- County Boundary



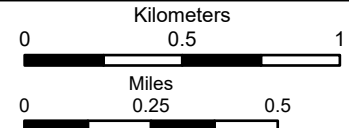
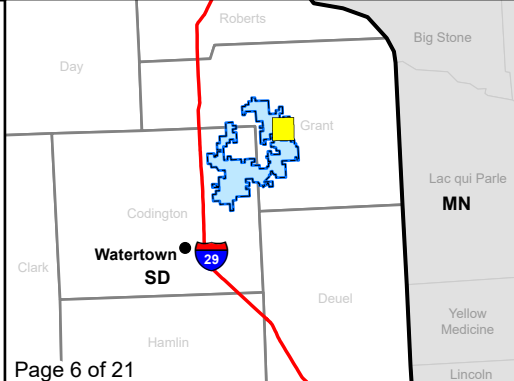
Service Layer Credits: Esri, HERE, Garmin, © OpenStreetMap contributors, and the GIS user community
 Quadrangle: Antelope Valley (1973), Twin Brooks (1973)
 Township/Range: T120N, R51W, T120N, R50W, T119N, R51W, T119N, R50W
 Codington and Grant Counties, South Dakota

SWCA
 ENVIRONMENTAL CONSULTANTS



Dakota Skipper Crowded Ridge Wind Farm

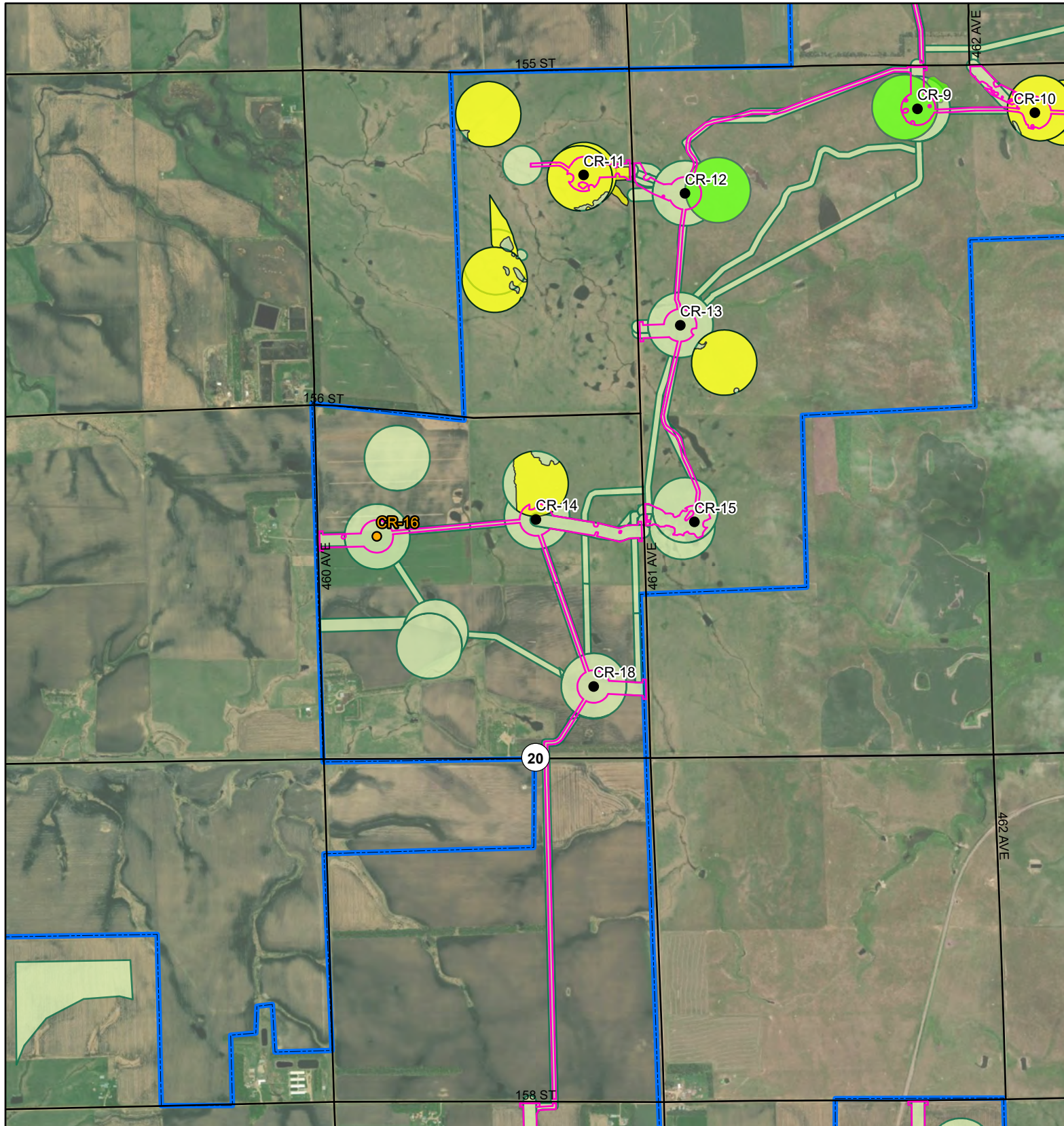
- Primary Turbine
- Alternate Turbine
- City
- Construction Easement
- Existing Road
- Field-Assessed Dakota Skipper Habitat
- Field-Assessed Dakota Skipper Habitat and Presence/Absence Survey Location 2018
- O&M Facility/ Substation
- Batch Plant
- Laydown Yard
- Survey Area
- Project Boundary
- County Boundary



Service Layer Credits: Esri, HERE, Garmin, © OpenStreetMap contributors, and the GIS user community
 Quadrangle: Twin Brooks (1973), Stockholm (1973)
 Township/Range: T120N, R50W, T119N, R50W
 Grant County, South Dakota

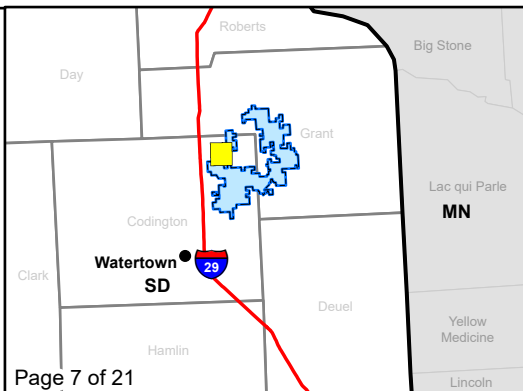
Projection:

SWCA
 ENVIRONMENTAL CONSULTANTS



Dakota Skipper Crowded Ridge Wind Farm

- Primary Turbine
- Alternate Turbine
- ⦿ City
- Construction Easement
- Existing Road
- Field-Assessed Dakota Skipper Habitat
- Field-Assessed Dakota Skipper Habitat and Presence/Absence Survey Location 2018
- O&M Facility/ Substation
- Batch Plant
- Laydown Yard
- Survey Area
- Project Boundary
- County Boundary

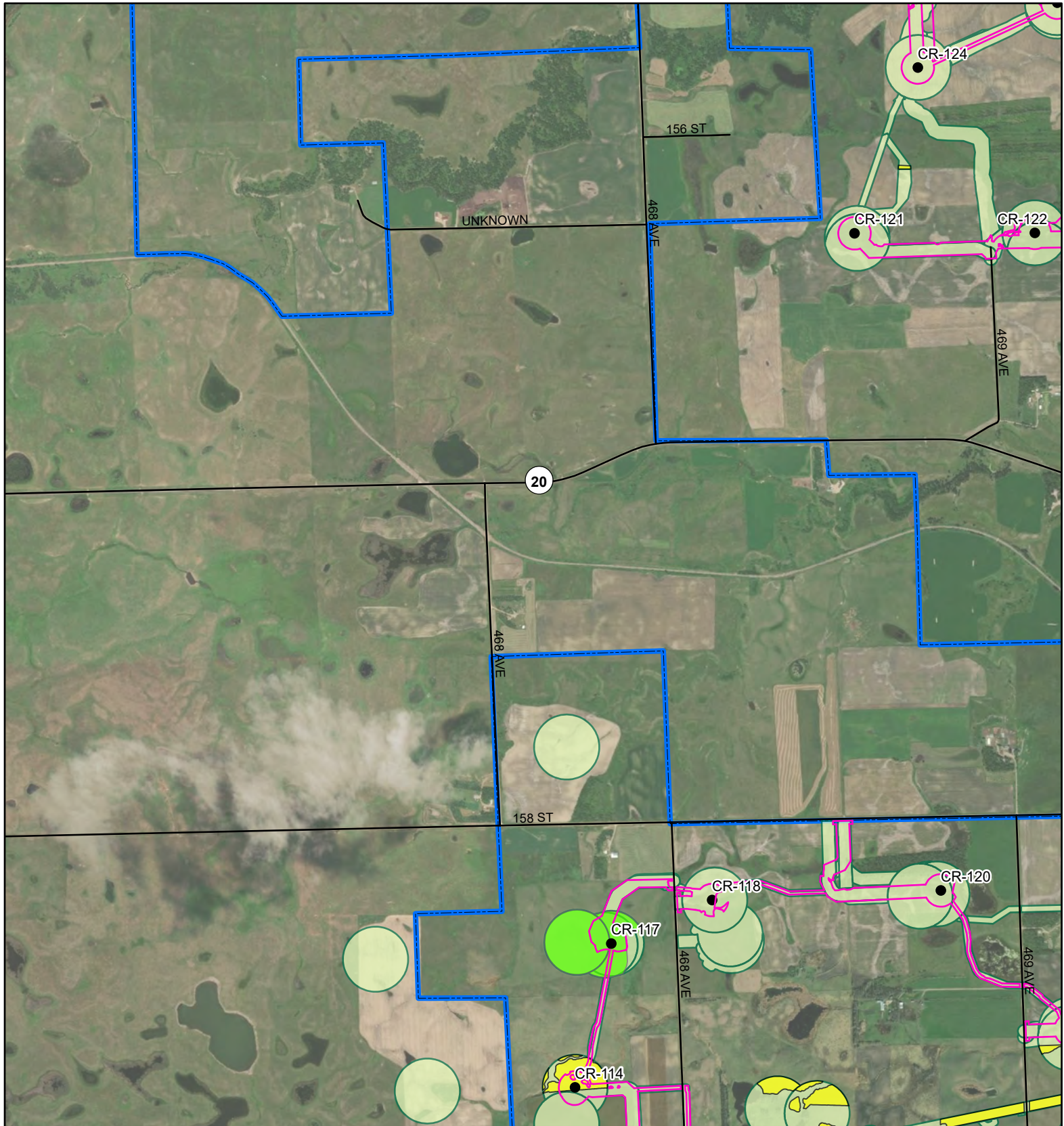


Kilometers
0 0.5 1

Miles
0 0.25 0.5

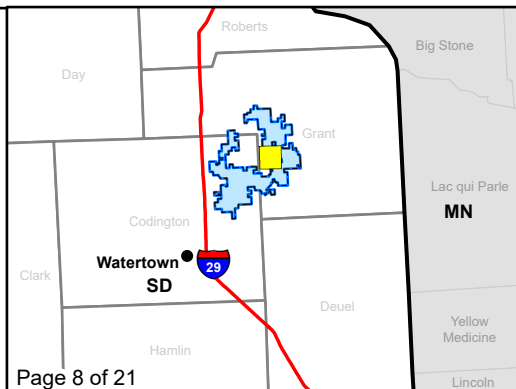
Service Layer Credits: Esri, HERE, Garmin, © OpenStreetMap contributors, and the GIS user community
Quadrangle: Still Lake NE (1970), Antelope Valley (1973), Still Lake SE (1970), South Shore (1973)
Township/Range: T119N, R52W, T119N, R51W
Codington County, South Dakota

SWCA
ENVIRONMENTAL CONSULTANTS

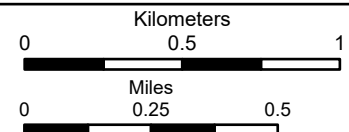


Dakota Skipper Crowned Ridge Wind Farm

- Primary Turbine
- Alternate Turbine
- ⊙ City
- Construction Easement
- Existing Road
- Field-Assessed Dakota Skipper Habitat
- Field-Assessed Dakota Skipper Habitat and Presence/Absence Survey Location 2018
- O&M Facility/Substation
- Batch Plant
- Laydown Yard
- Survey Area
- Project Boundary
- County Boundary



Page 8 of 21

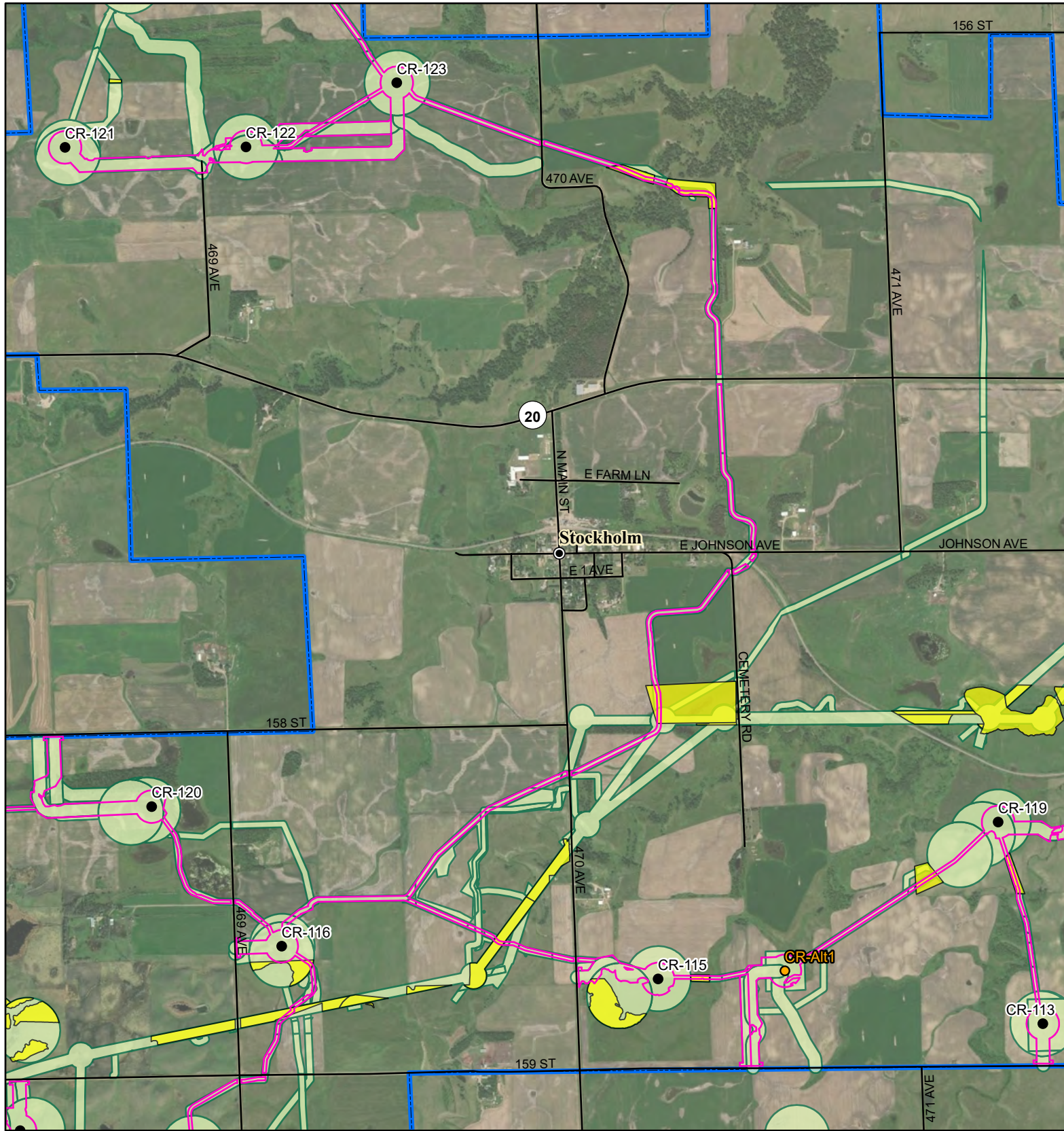


Service Layer Credits: Esri, HERE, Garmin, © OpenStreetMap contributors, and the GIS user community
 Quadrangle: Stockholm (1973), Antelope Valley (1973), Twin Brooks (1973), South Shore (1973)
 Township/Range: T119N, R50W

Grant County, South Dakota

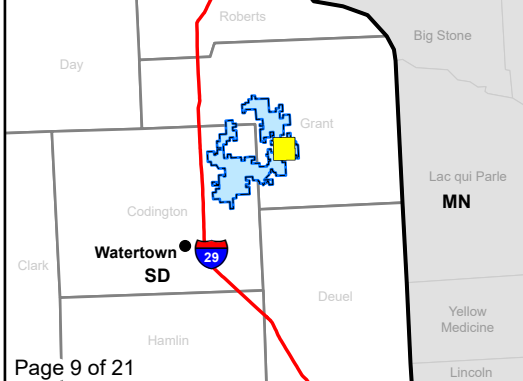
Projection:

SWCA
 ENVIRONMENTAL CONSULTANTS



Dakota Skipper Crowned Ridge Wind Farm

- Primary Turbine
- Alternate Turbine
- City
- Construction Easement
- Existing Road
- Field-Assessed Dakota Skipper Habitat
- Field-Assessed Dakota Skipper Habitat and Presence/Absence Survey Location 2018
- O&M Facility/Substation
- Batch Plant
- Laydown Yard
- Survey Area
- Project Boundary
- County Boundary



0
0.5
1

Kilometers

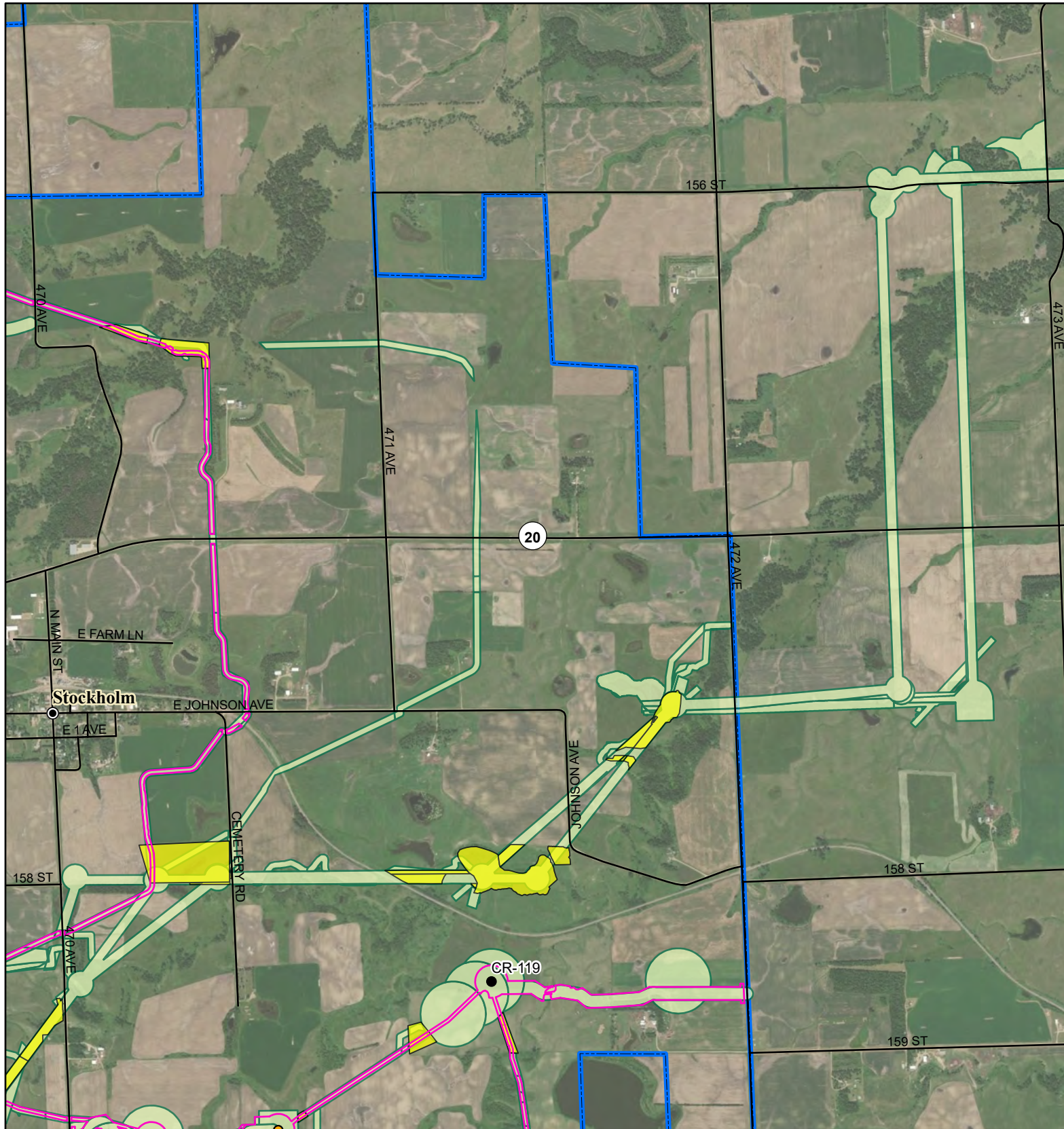
0
0.25
0.5

Miles

Service Layer Credits: Esri, HERE, Garmin, © OpenStreetMap contributors, and the GIS user community
Quadrangle: Stockholm (1973)
Township/Range: T119N, R50W
Grant County, South Dakota

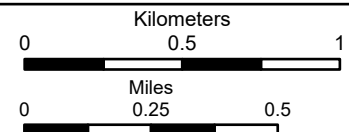
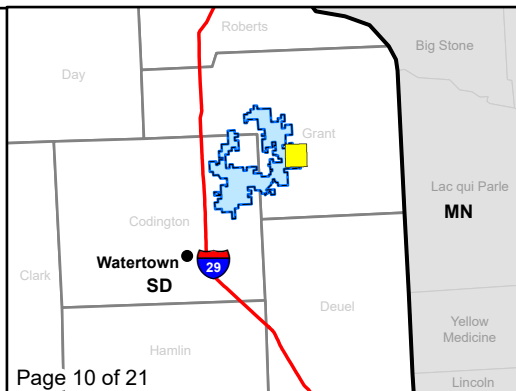
SWCA

ENVIRONMENTAL CONSULTANTS



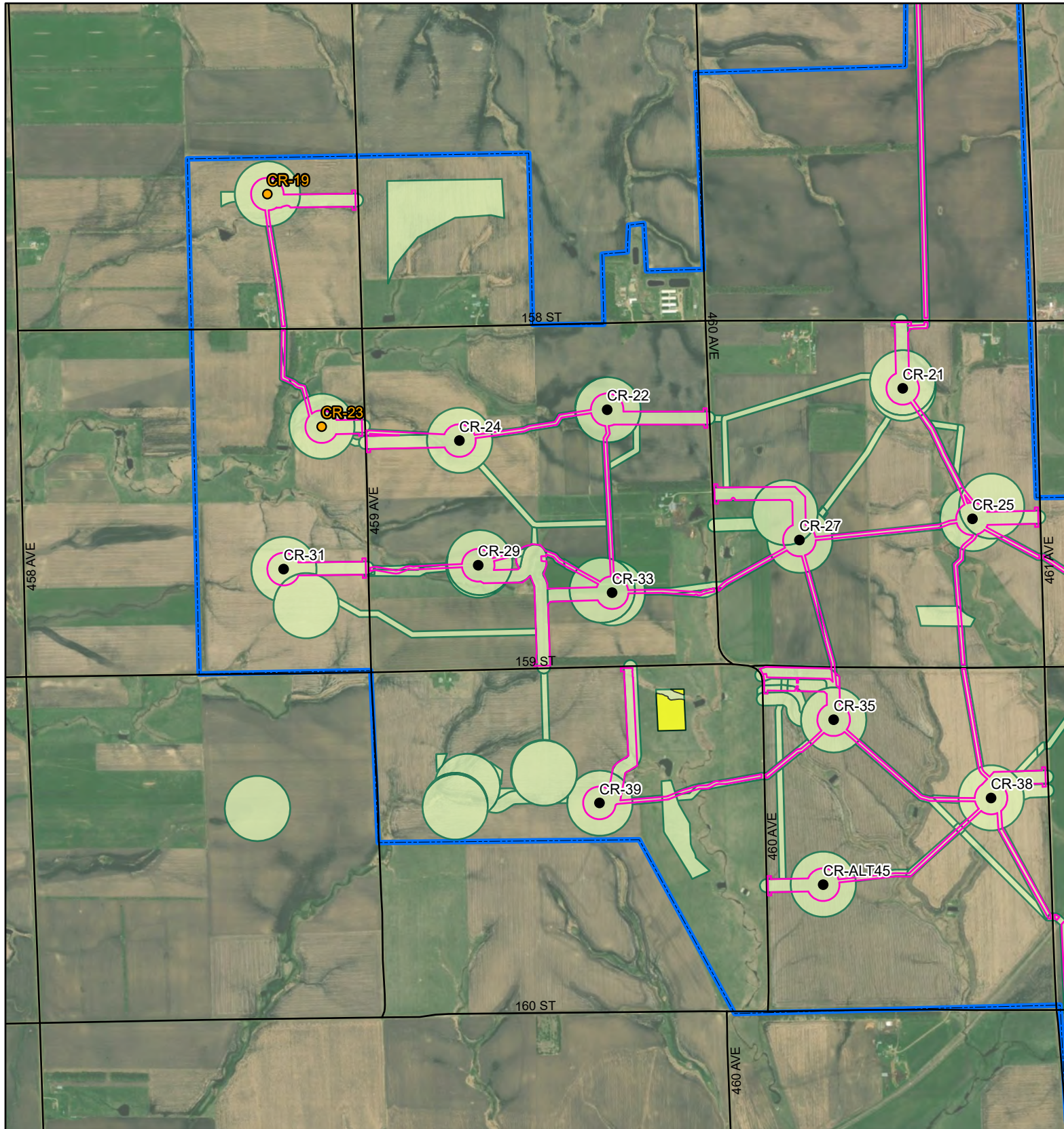
Dakota Skipper Crowded Ridge Wind Farm

- Primary Turbine
- Alternate Turbine
- City
- Construction Easement
- Existing Road
- Field-Assessed Dakota Skipper Habitat
- Field-Assessed Dakota Skipper Habitat and Presence/Absence Survey Location 2018
- O&M Facility/Substation
- Batch Plant
- Laydown Yard
- Survey Area
- Project Boundary
- County Boundary



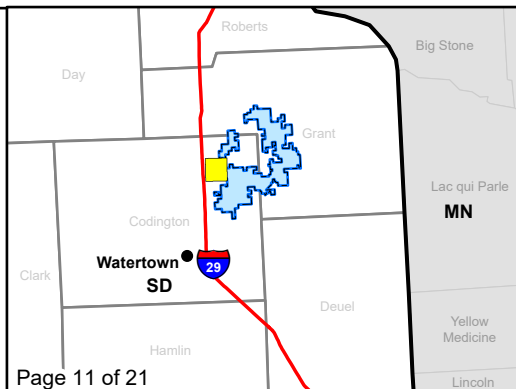
Service Layer Credits: Esri, HERE, Garmin,
© OpenStreetMap contributors, and the GIS user
community
Quadrangle: Twin Brooks (1973),
Stockholm (1973)
Township/Range: T119N, R50W,
T119N, R49W
Grant County, South Dakota

SWCA
ENVIRONMENTAL CONSULTANTS

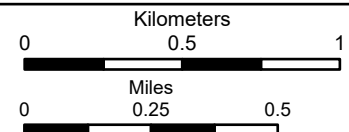


Dakota Skipper Crowded Ridge Wind Farm

- Primary Turbine
- Alternate Turbine
- City
- Construction Easement
- Existing Road
- Field-Assessed Dakota Skipper Habitat
- Field-Assessed Dakota Skipper Habitat and Presence/Absence Survey Location 2018
- O&M Facility/Substation
- Batch Plant
- Laydown Yard
- Survey Area
- Project Boundary
- County Boundary



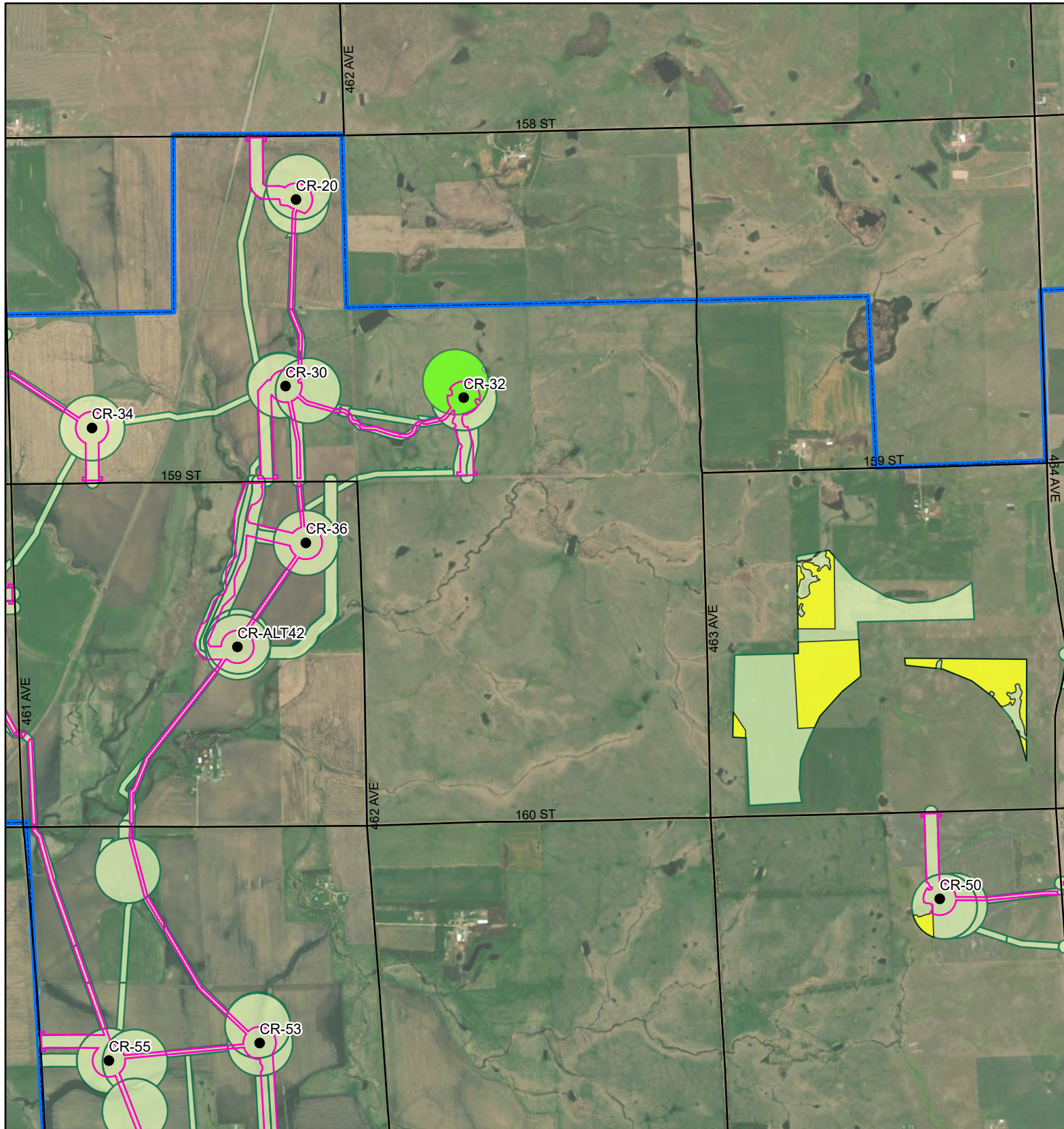
Page 11 of 21



Service Layer Credits: Esri, HERE, Garmin,
© OpenStreetMap contributors, and the GIS user
community
Quadrangle: Still Lake SE (1970),
South Shore (1973)
Township/Range: T119N, R52W, T119N, R51W,
T118N, R52W, T118N, R51W
Codrington County, South Dakota

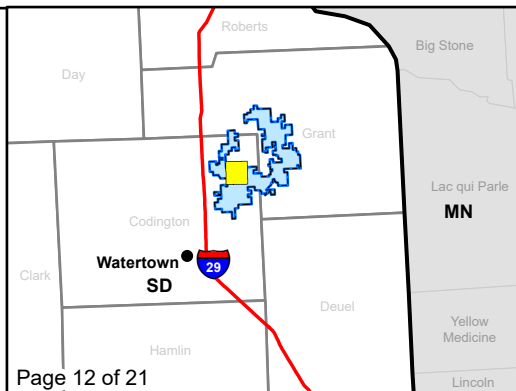
Projection:

SWCA
ENVIRONMENTAL CONSULTANTS

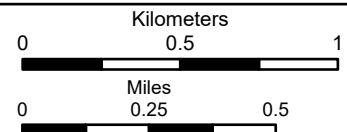


Dakota Skipper Crowded Ridge Wind Farm

- Primary Turbine
- Alternate Turbine
- City
- Construction Easement
- Existing Road
- Field-Assessed Dakota Skipper Habitat
- Field-Assessed Dakota Skipper Habitat and Presence/Absence Survey Location 2018
- O&M Facility/Substation
- Batch Plant
- Laydown Yard
- Survey Area
- Project Boundary
- County Boundary



Page 12 of 21

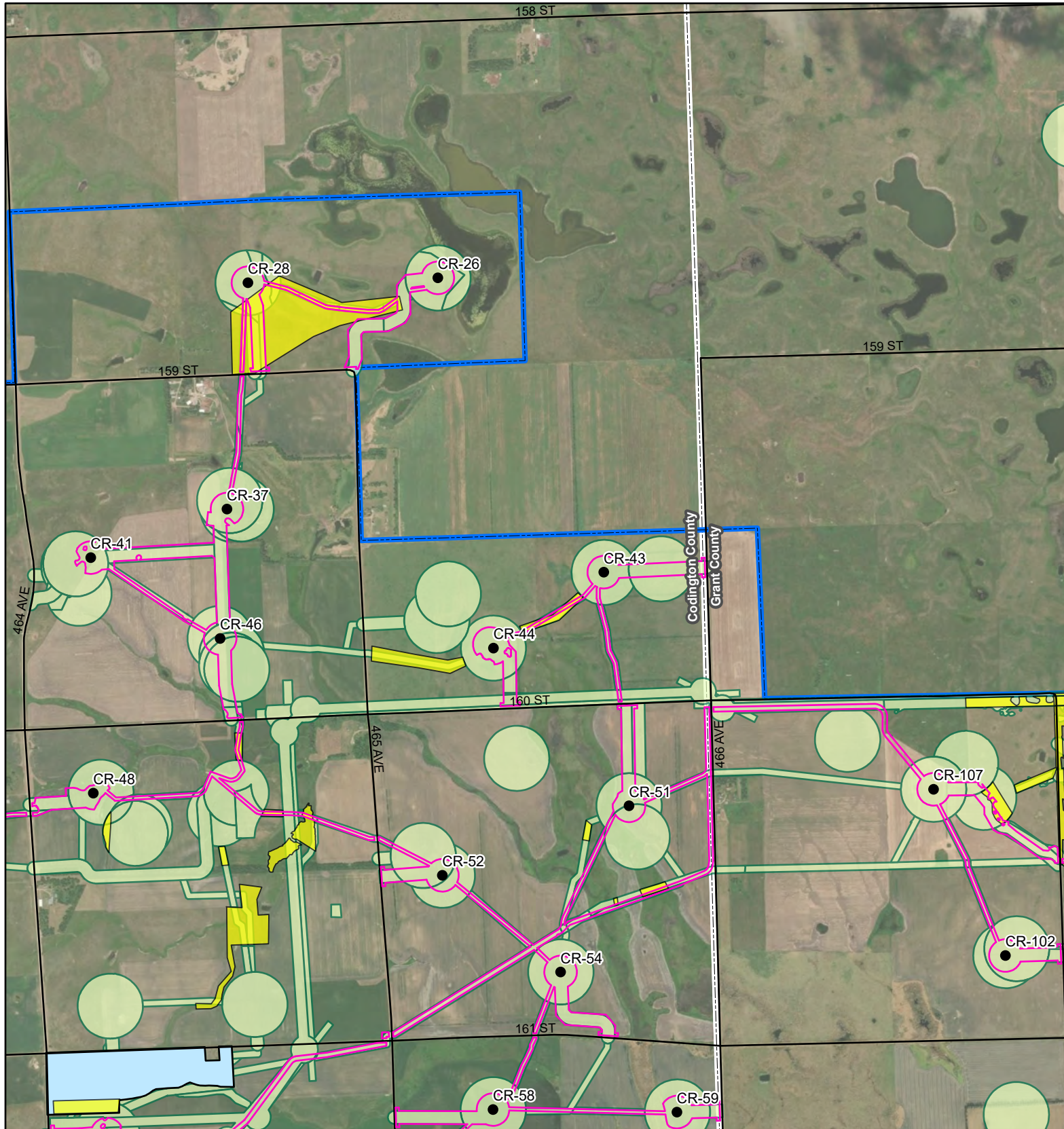


Service Layer Credits: Esri, HERE, Garmin,
© OpenStreetMap contributors, and the GIS user
community
Quadrangle: South Shore (1973)

Township/Range: T119N, R51W,
T118N, R51W
Codrington County, South Dakota

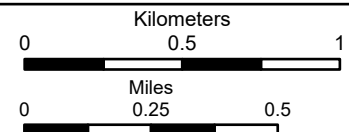
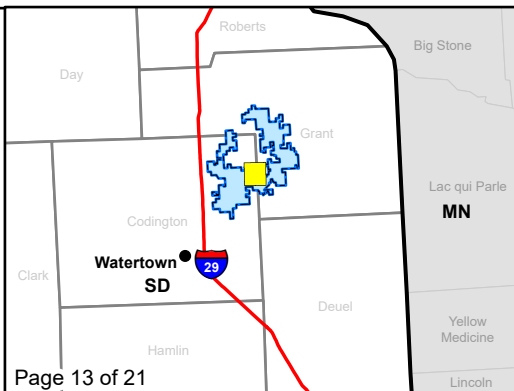
Projection:

SWCA
ENVIRONMENTAL CONSULTANTS



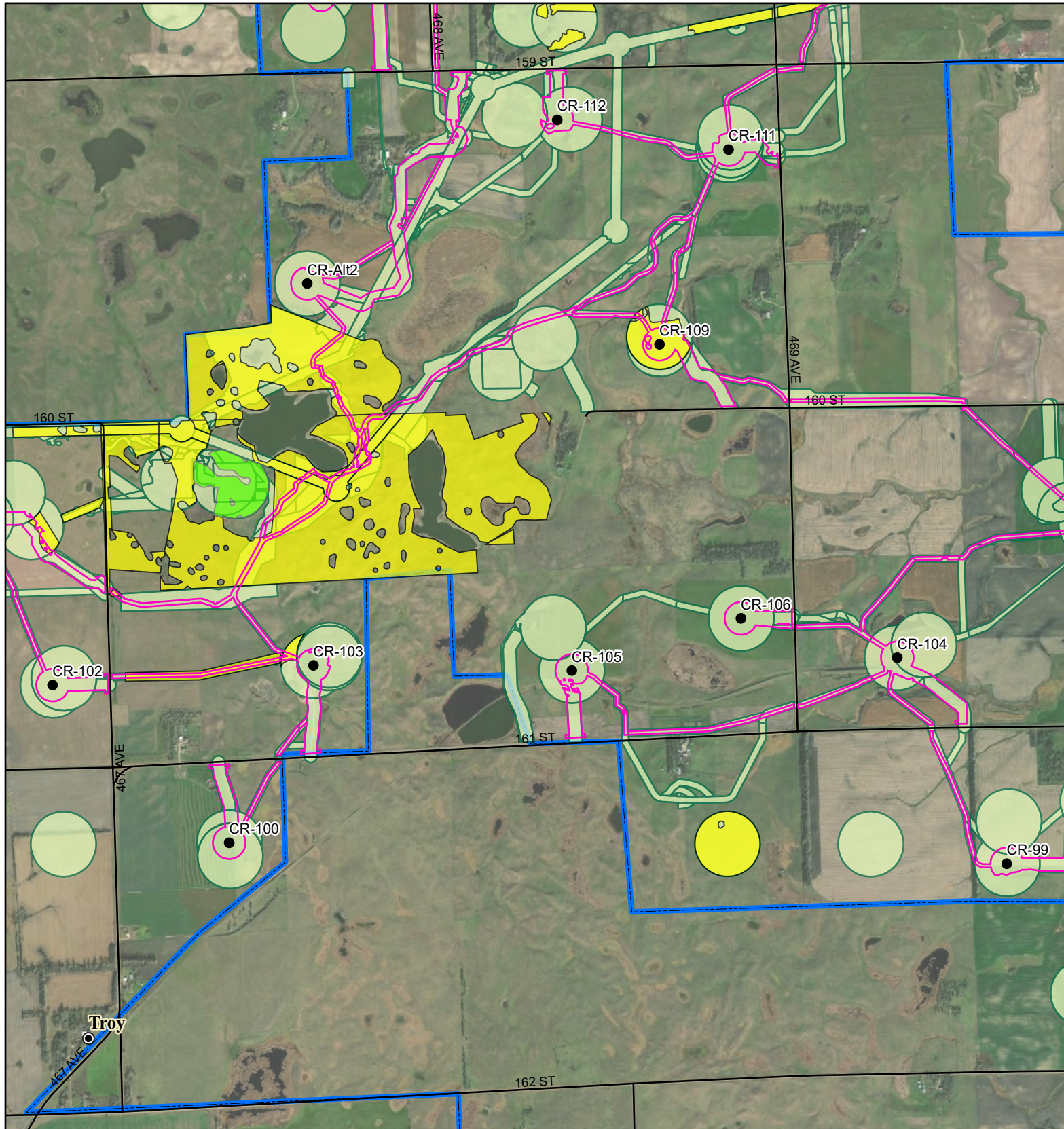
Dakota Skipper Crowded Ridge Wind Farm

- Primary Turbine
- Alternate Turbine
- City
- Construction Easement
- Existing Road
- Field-Assessed Dakota Skipper Habitat
- Field-Assessed Dakota Skipper Habitat and Presence/Absence Survey Location 2018
- O&M Facility/Substation
- Batch Plant
- Laydown Yard
- Survey Area
- Project Boundary
- County Boundary



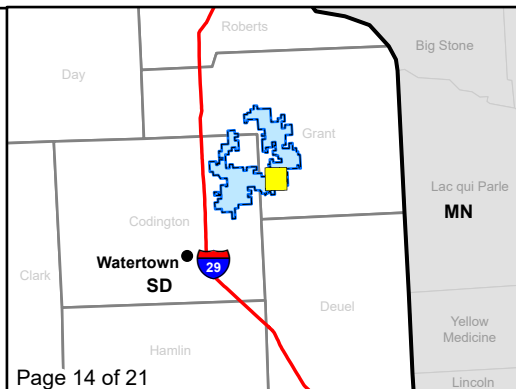
Service Layer Credits: Esri, HERE, Garmin, © OpenStreetMap contributors, and the GIS user community
 Quadrangle: South Shore (1973), Stockholm (1973)
 Township/Range: T119N, R51W, T119N, R50W, T118N, R51W, T118N, R50W
 Codington and Grant Counties, South Dakota

SWCA
 ENVIRONMENTAL CONSULTANTS

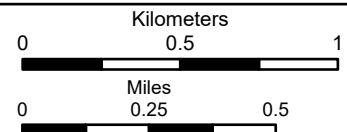


Dakota Skipper Crowded Ridge Wind Farm

- Primary Turbine
- Alternate Turbine
- City
- Construction Easement
- Existing Road
- Field-Assessed Dakota Skipper Habitat
- Field-Assessed Dakota Skipper Habitat and Presence/Absence Survey Location 2018
- O&M Facility/Substation
- Batch Plant
- Laydown Yard
- Survey Area
- Project Boundary
- County Boundary



Page 14 of 21

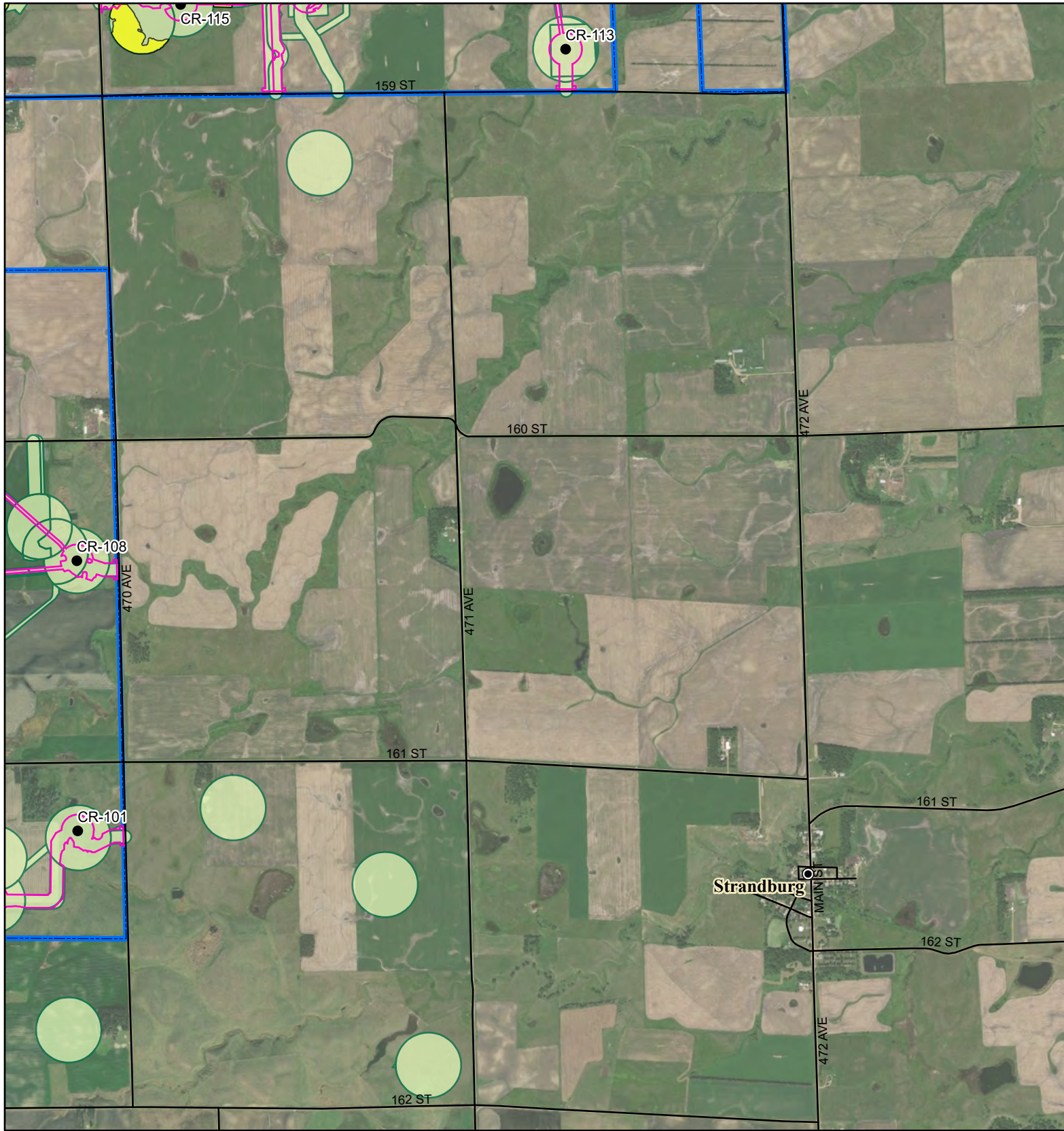


Service Layer Credits: Esri, HERE, Garmin,
© OpenStreetMap contributors, and the GIS user
community
Quadrangle: Stockholm (1973)

Township/Range: T119N, R50W,
T118N, R50W
Grant County, South Dakota

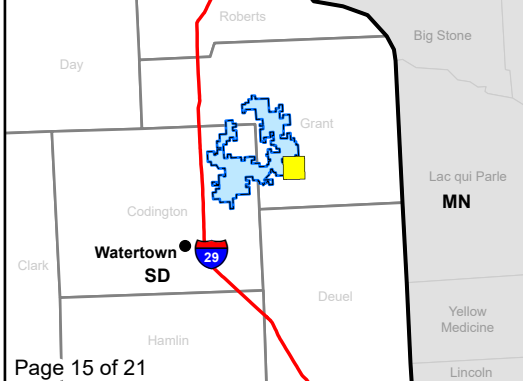
Projection:

SWCA
ENVIRONMENTAL CONSULTANTS



Dakota Skipper Crowded Ridge Wind Farm

- Primary Turbine
- Alternate Turbine
- City
- Construction Easement
- Existing Road
- Field-Assessed Dakota Skipper Habitat
- Field-Assessed Dakota Skipper Habitat and Presence/Absence Survey Location 2018
- O&M Facility/ Substation
- Batch Plant
- Laydown Yard
- Survey Area
- Project Boundary
- County Boundary



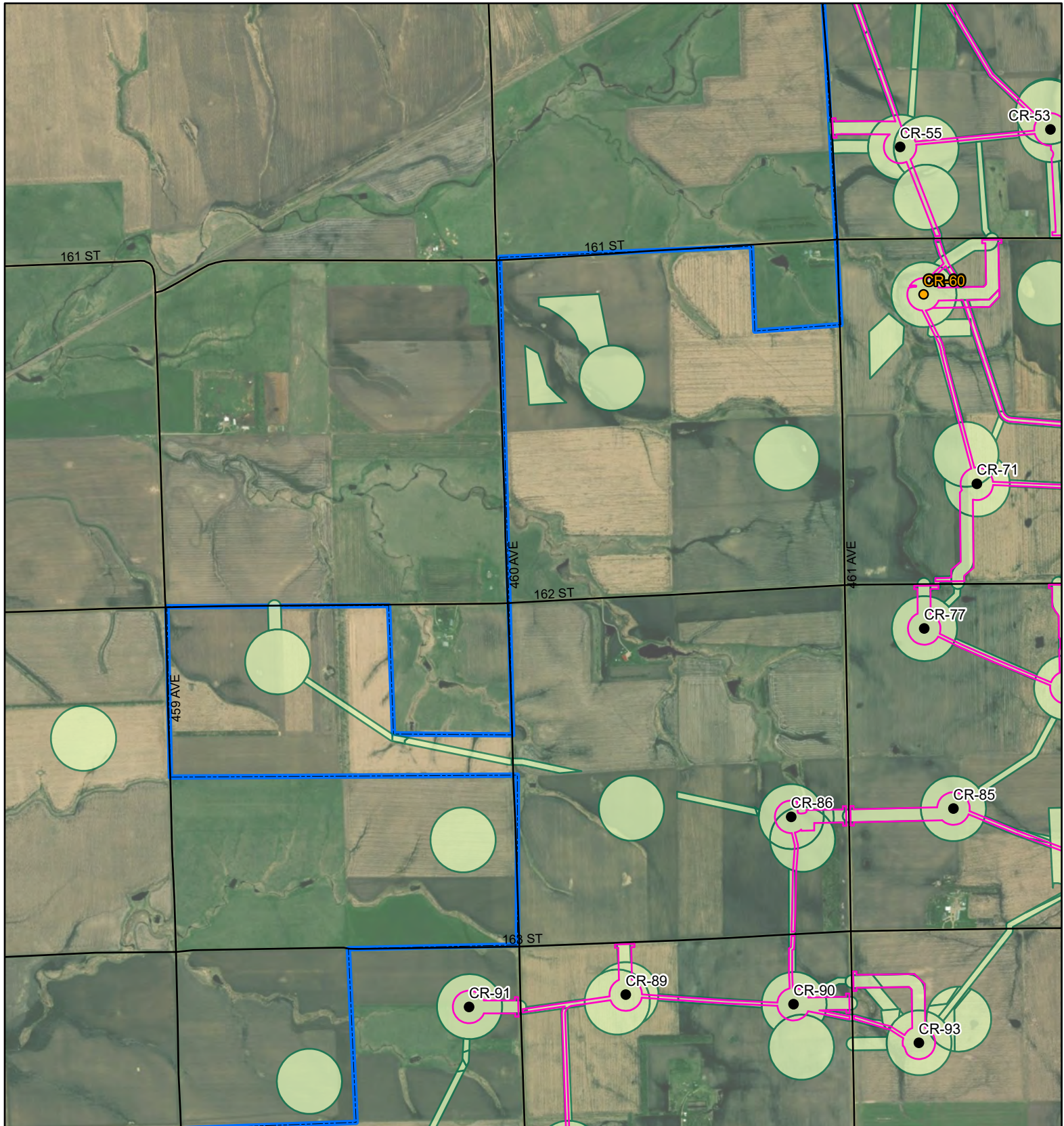
0 0.5 1

0 0.25 0.5

Kilometers
Miles

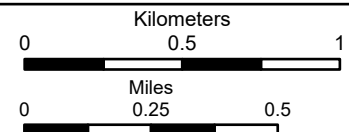
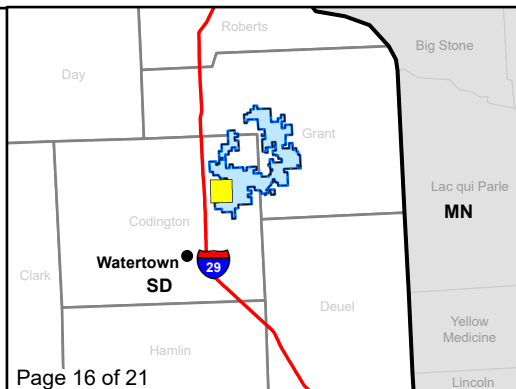
Service Layer Credits: Esri, HERE, Garmin, © OpenStreetMap contributors, and the GIS user community
Quadrangle: Stockholm (1973)
Township/Range: T119N, R50W, T118N, R50W
Grant County, South Dakota

Projection:



Dakota Skipper Crowded Ridge Wind Farm

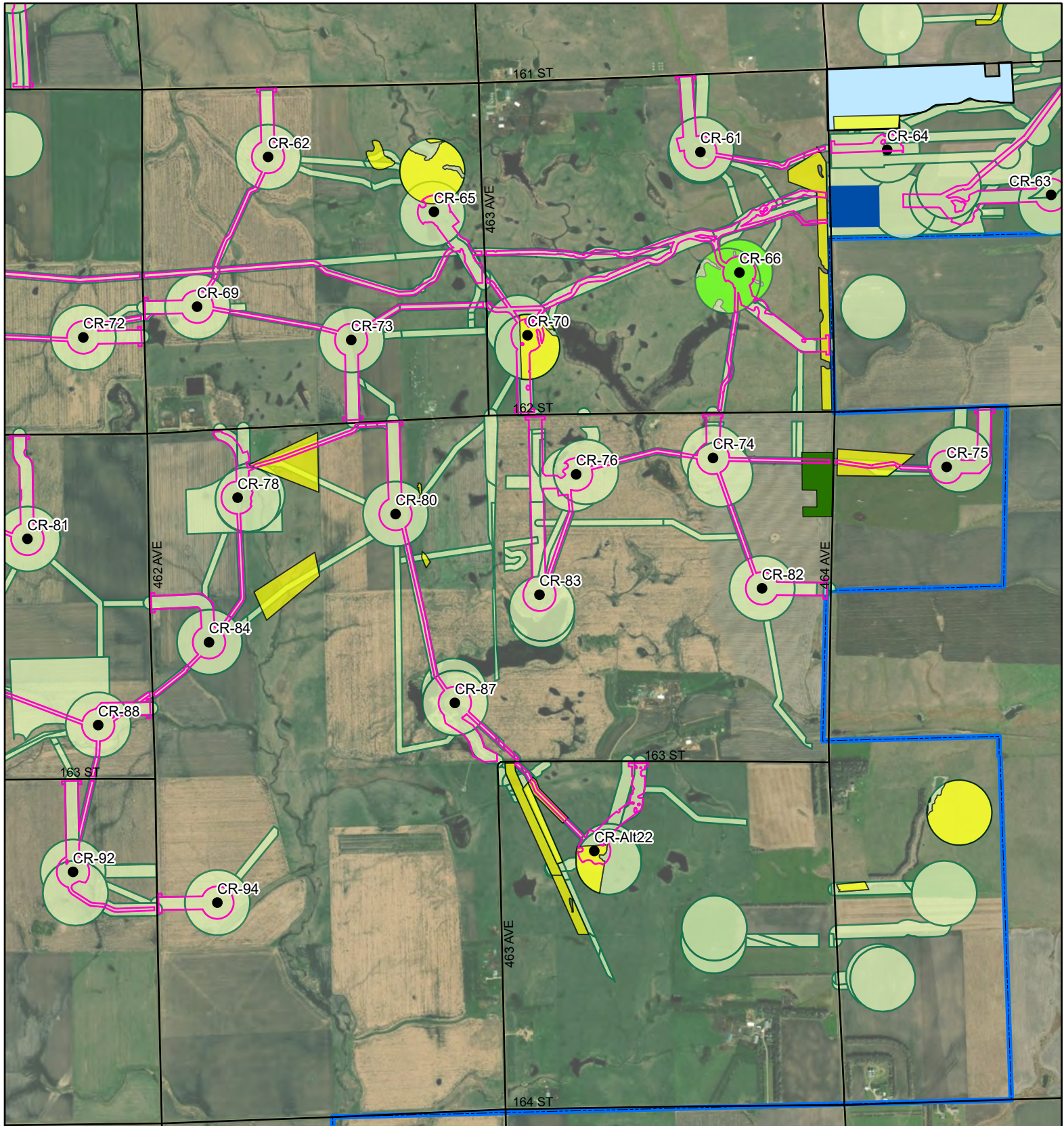
- Primary Turbine
- Alternate Turbine
- City
- Construction Easement
- Existing Road
- Field-Assessed Dakota Skipper Habitat
- Field-Assessed Dakota Skipper Habitat and Presence/Absence Survey Location 2018
- O&M Facility/Substation
- Batch Plant
- Laydown Yard
- Survey Area
- Project Boundary
- County Boundary



Service Layer Credits: Esri, HERE, Garmin, © OpenStreetMap contributors, and the GIS user community
 Quadrangle: Still Lake SE (1970), South Shore (1973)
 Township/Range: T118N, R52W, T118N, R51W
 Codington County, South Dakota

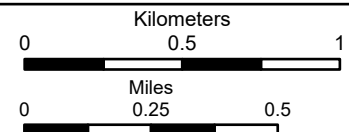
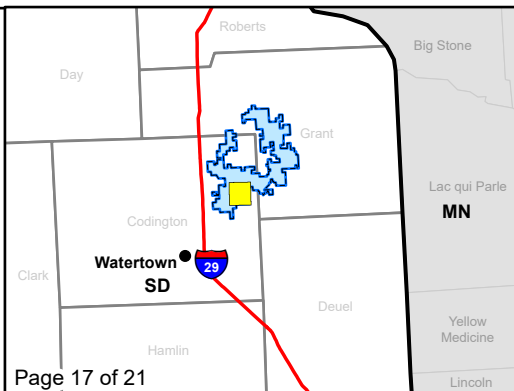
Projection:

SWCA
 ENVIRONMENTAL CONSULTANTS



Dakota Skipper Crowded Ridge Wind Farm

- Primary Turbine
- Alternate Turbine
- City
- Construction Easement
- Existing Road
- Field-Assessed Dakota Skipper Habitat
- Field-Assessed Dakota Skipper Habitat and Presence/Absence Survey Location 2018
- O&M Facility/Substation
- Batch Plant
- Laydown Yard
- Survey Area
- Project Boundary
- County Boundary



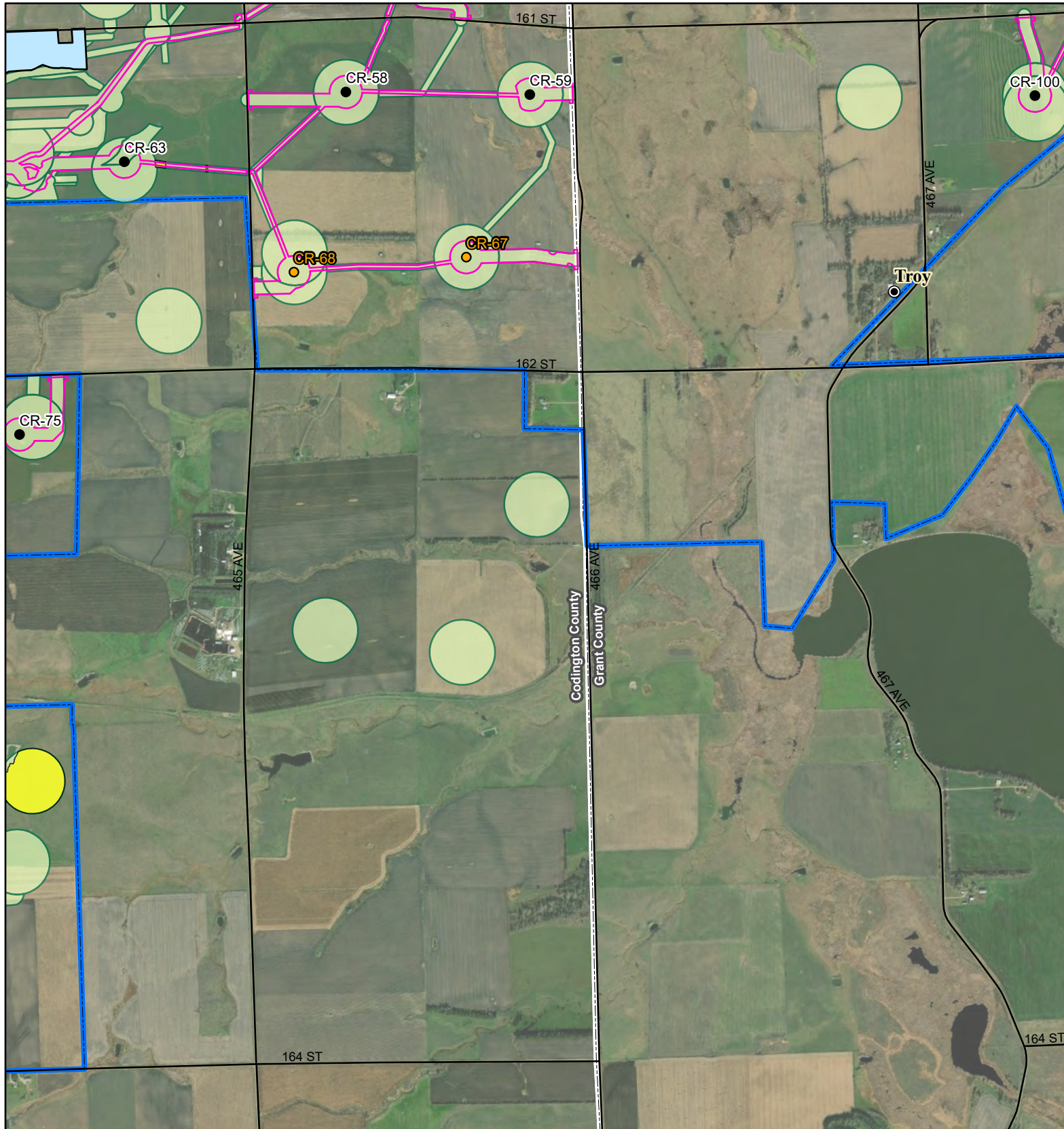
Service Layer Credits: Esri, HERE, Garmin,
© OpenStreetMap contributors, and the GIS user
community
Quadrangle: South Shore (1973)

Township/Range: T118N, R51W

Codington County, South Dakota

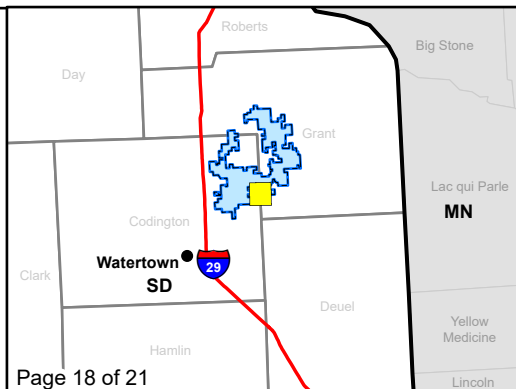
Projection:

SWCA
ENVIRONMENTAL CONSULTANTS

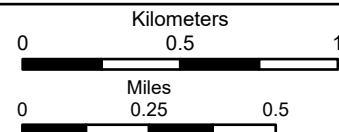


Dakota Skipper Crowned Ridge Wind Farm

- Primary Turbine
- Alternate Turbine
- ⊙ City
- Construction Easement
- Existing Road
- Field-Assessed Dakota Skipper Habitat
- Field-Assessed Dakota Skipper Habitat and Presence/Absence Survey Location 2018
- O&M Facility/ Substation
- Batch Plant
- Laydown Yard
- Survey Area
- Project Boundary
- County Boundary



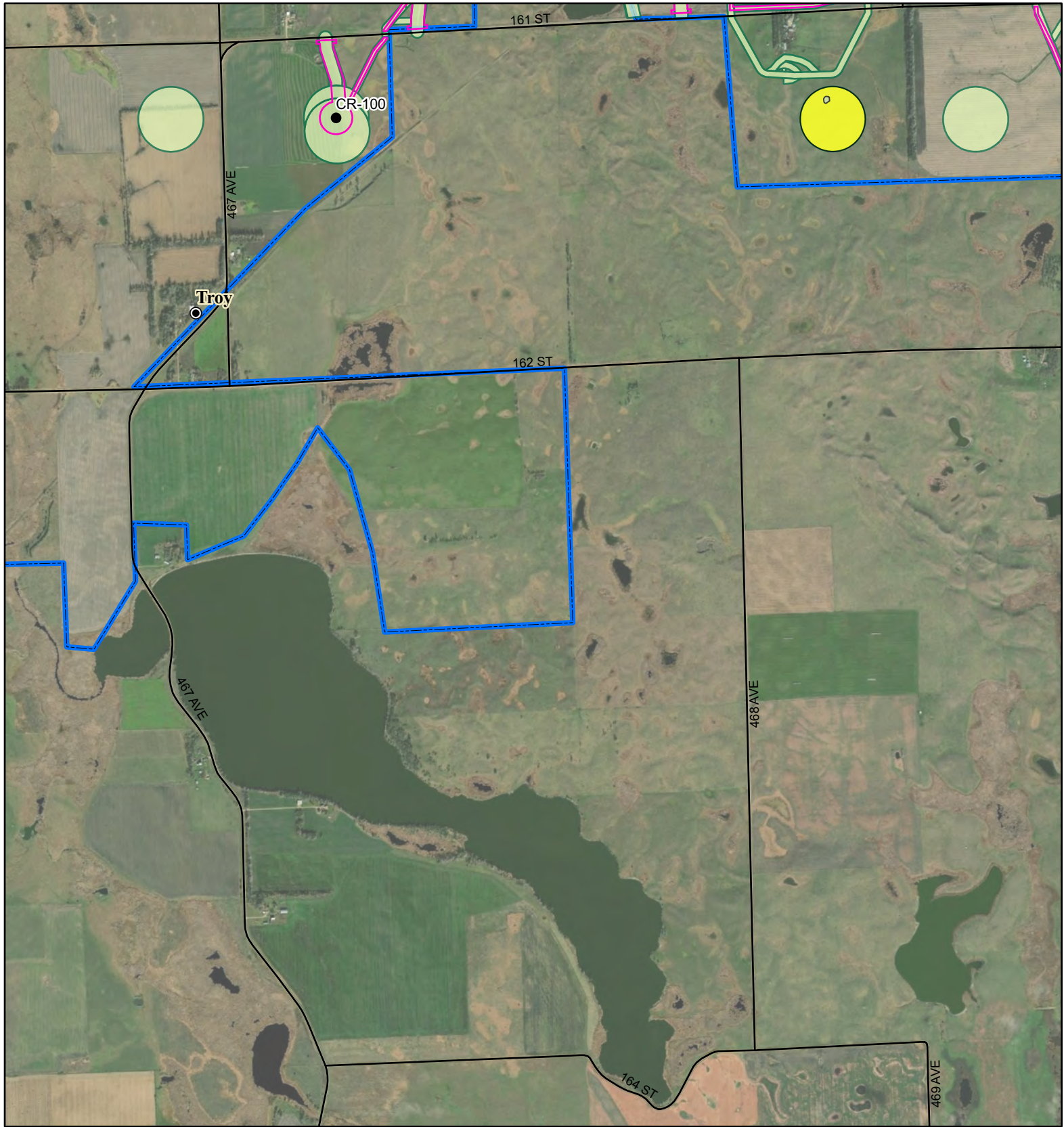
Page 18 of 21



Service Layer Credits: Esri, HERE, Garmin,
© OpenStreetMap contributors, and the GIS user
community
Quadrangle: South Shore (1973),
Stockholm (1973)
Township/Range: T118N, R51W,
T118N, R50W
Codington and Grant Counties, South Dakota

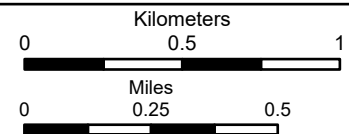
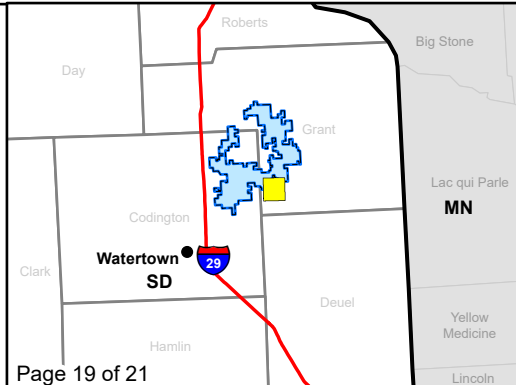
Projection:

SWCA
ENVIRONMENTAL CONSULTANTS



Dakota Skipper Crowded Ridge Wind Farm

- Primary Turbine
- Alternate Turbine
- City
- Construction Easement
- Existing Road
- Field-Assessed Dakota Skipper Habitat
- Field-Assessed Dakota Skipper Habitat and Presence/Absence Survey Location 2018
- O&M Facility/ Substation
- Batch Plant
- Laydown Yard
- Survey Area
- Project Boundary
- County Boundary

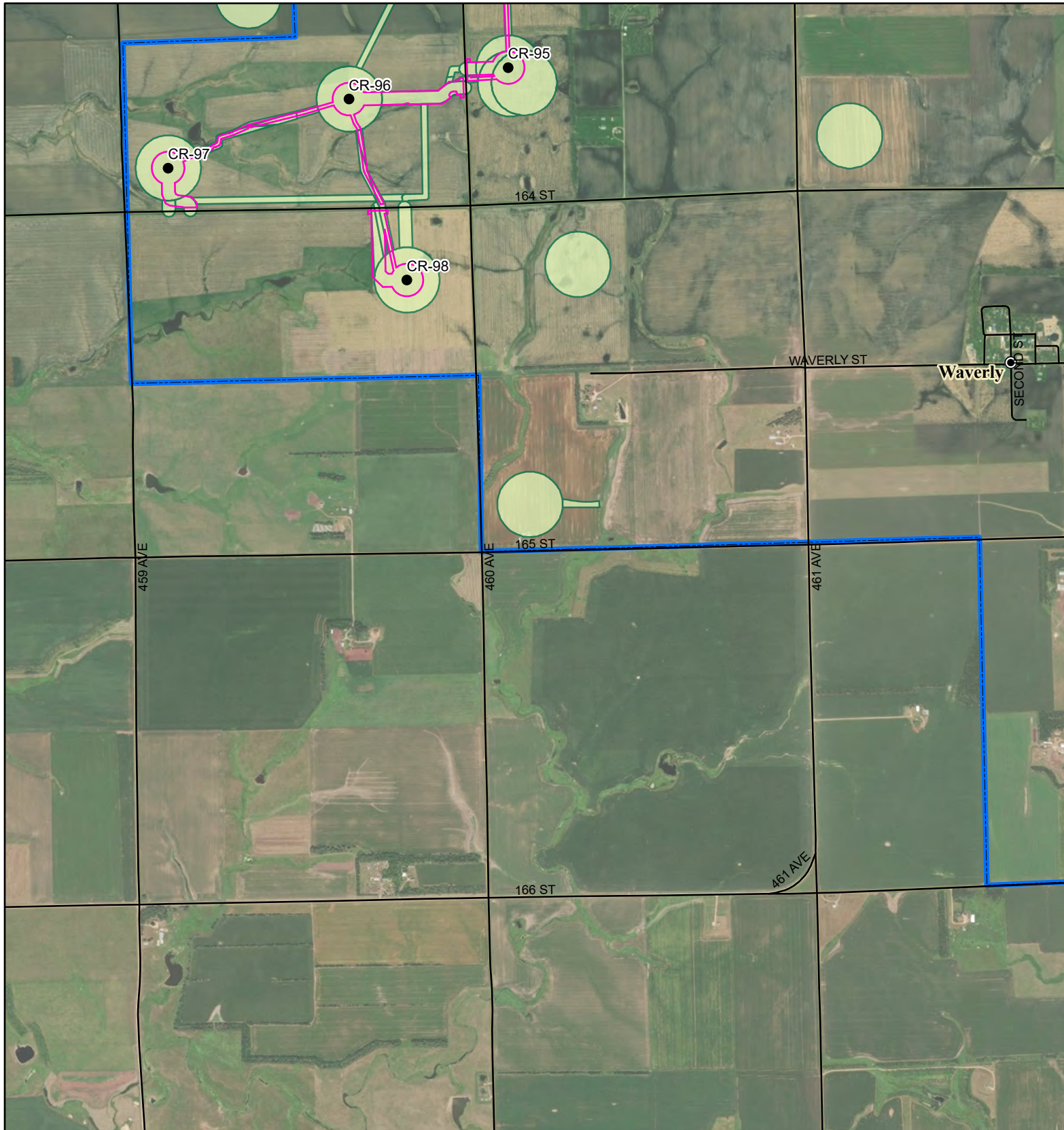


Service Layer Credits: Esri, HERE, Garmin, © OpenStreetMap contributors, and the GIS user community
 Quadrangle: South Shore (1973), Stockholm (1973)
 Township/Range: T118N, R50W

Grant County, South Dakota

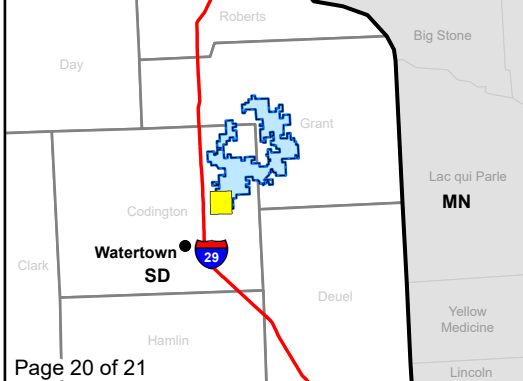
Projection:

SWCA
 ENVIRONMENTAL CONSULTANTS



Dakota Skipper Crowded Ridge Wind Farm

- Primary Turbine
- Alternate Turbine
- ⊙ City
- Construction Easement
- Existing Road
- Field-Assessed Dakota Skipper Habitat
- Field-Assessed Dakota Skipper Habitat and Presence/Absence Survey Location 2018
- O&M Facility/ Substation
- Batch Plant
- Laydown Yard
- Survey Area
- Project Boundary
- County Boundary



0
0.5
1

Kilometers

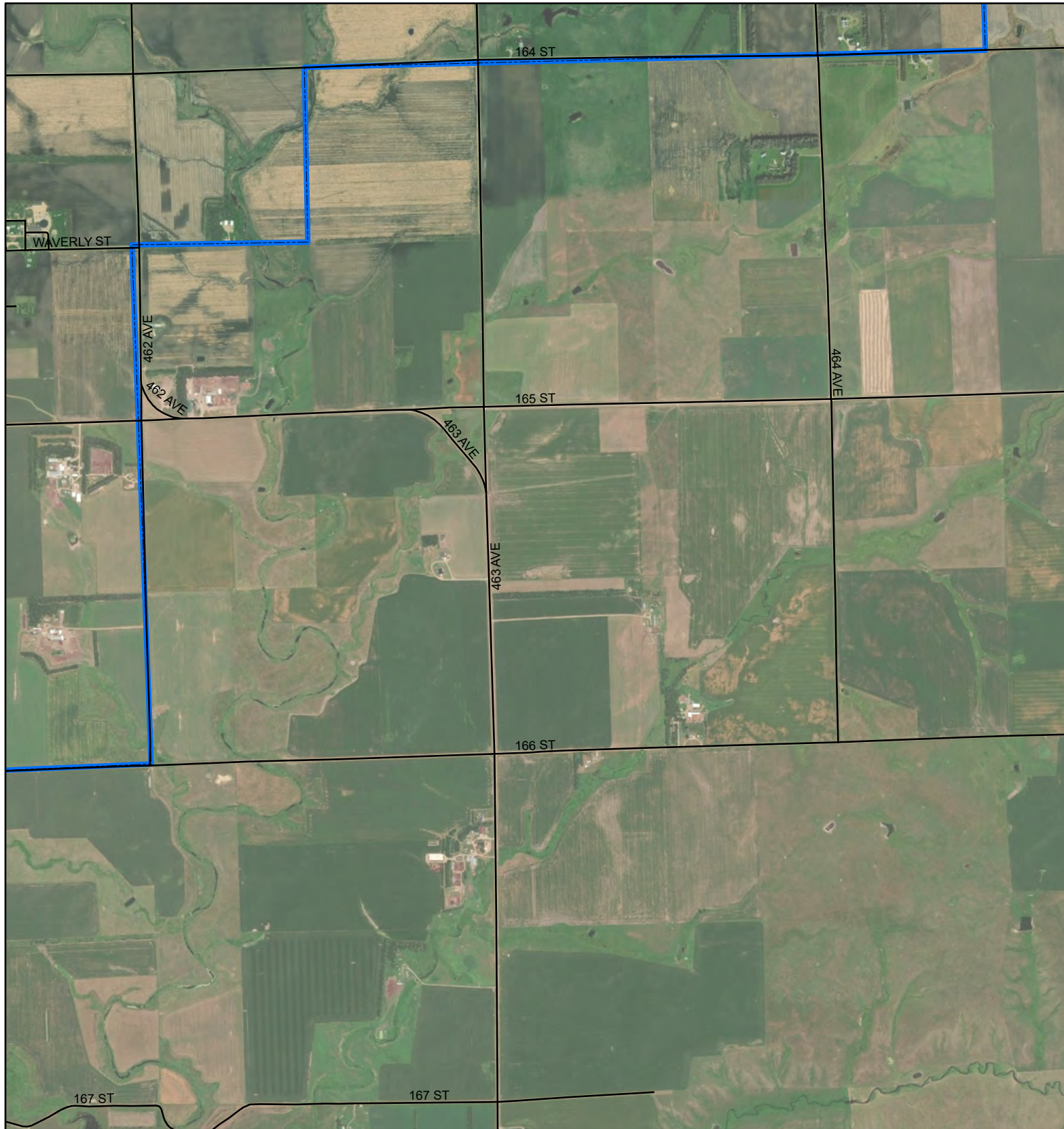
0
0.25
0.5

Miles

Service Layer Credits: Esri, HERE, Garmin, © OpenStreetMap contributors, and the GIS user community
Quadrangle: Still Lake SE (1970), Watertown East (1969), South Shore (1973), Kranzburg (1970)
Township/Range: T118N, R52W, T118N, R51W, T117N, R52W, T117N, R51W
Codington County, South Dakota

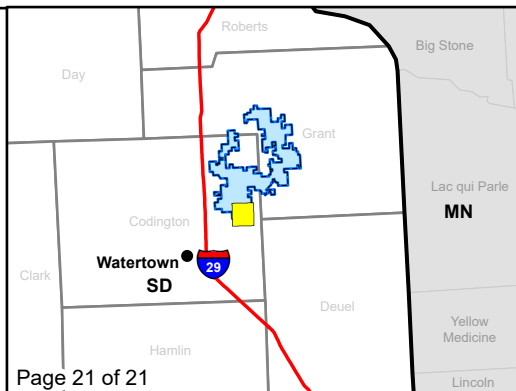
SWCA

ENVIRONMENTAL CONSULTANTS

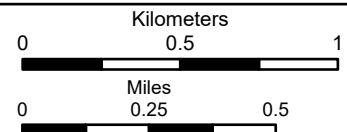


Dakota Skipper Crowded Ridge Wind Farm

- Primary Turbine
- Alternate Turbine
- City
- Construction Easement
- Existing Road
- Field-Assessed Dakota Skipper Habitat
- Field-Assessed Dakota Skipper Habitat and Presence/Absence Survey Location 2018
- O&M Facility/ Substation
- Batch Plant
- Laydown Yard
- Survey Area
- Project Boundary
- County Boundary



Page 21 of 21



Service Layer Credits: Esri, HERE, Garmin, © OpenStreetMap contributors, and the GIS user community
 Quadrangle: South Shore (1973), Kranzburg (1970)
 Township/Range: T118N, R51W, T117N, R51W
 Codington County, South Dakota

Projection:

SWCA
 ENVIRONMENTAL CONSULTANTS