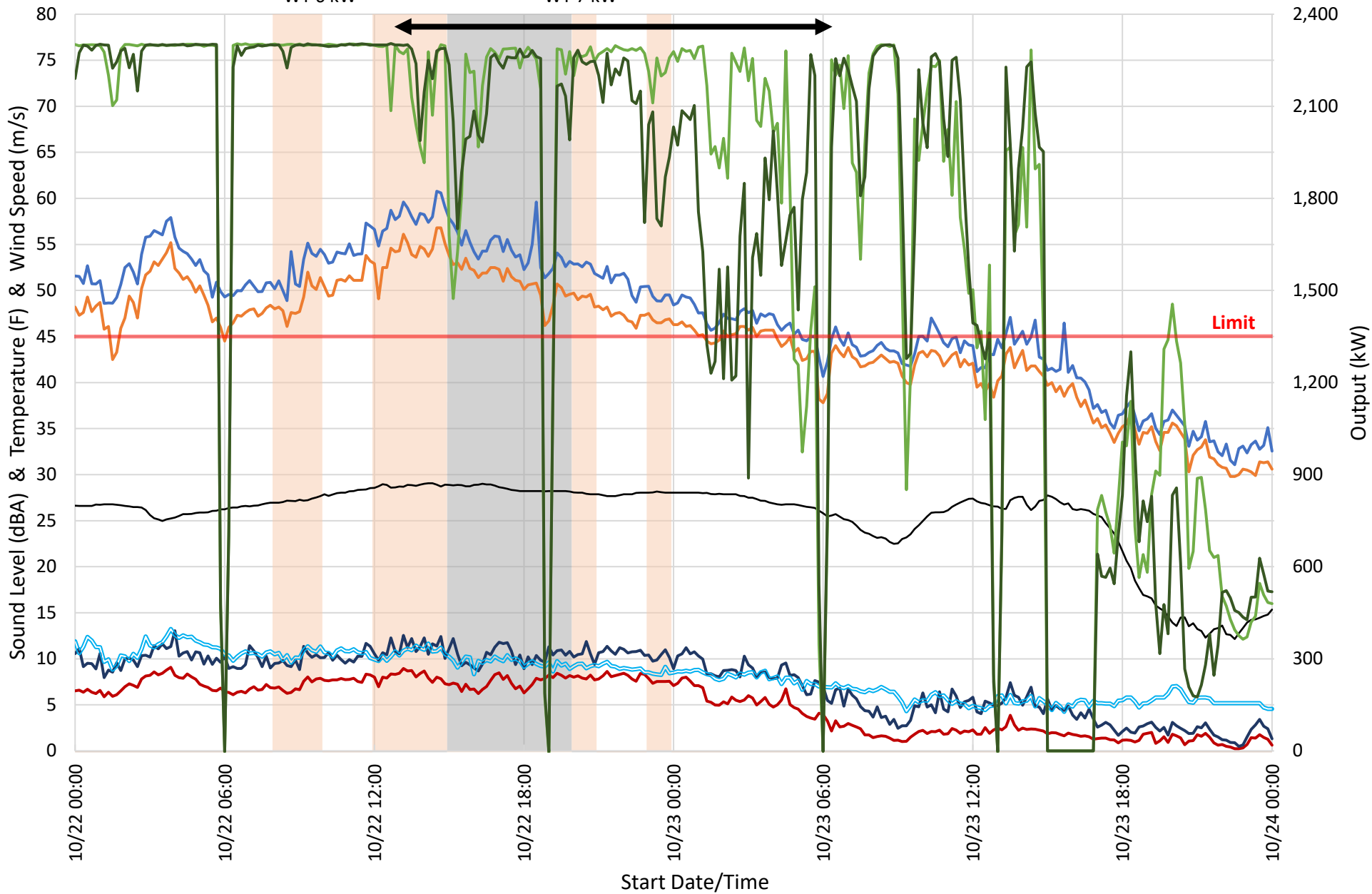
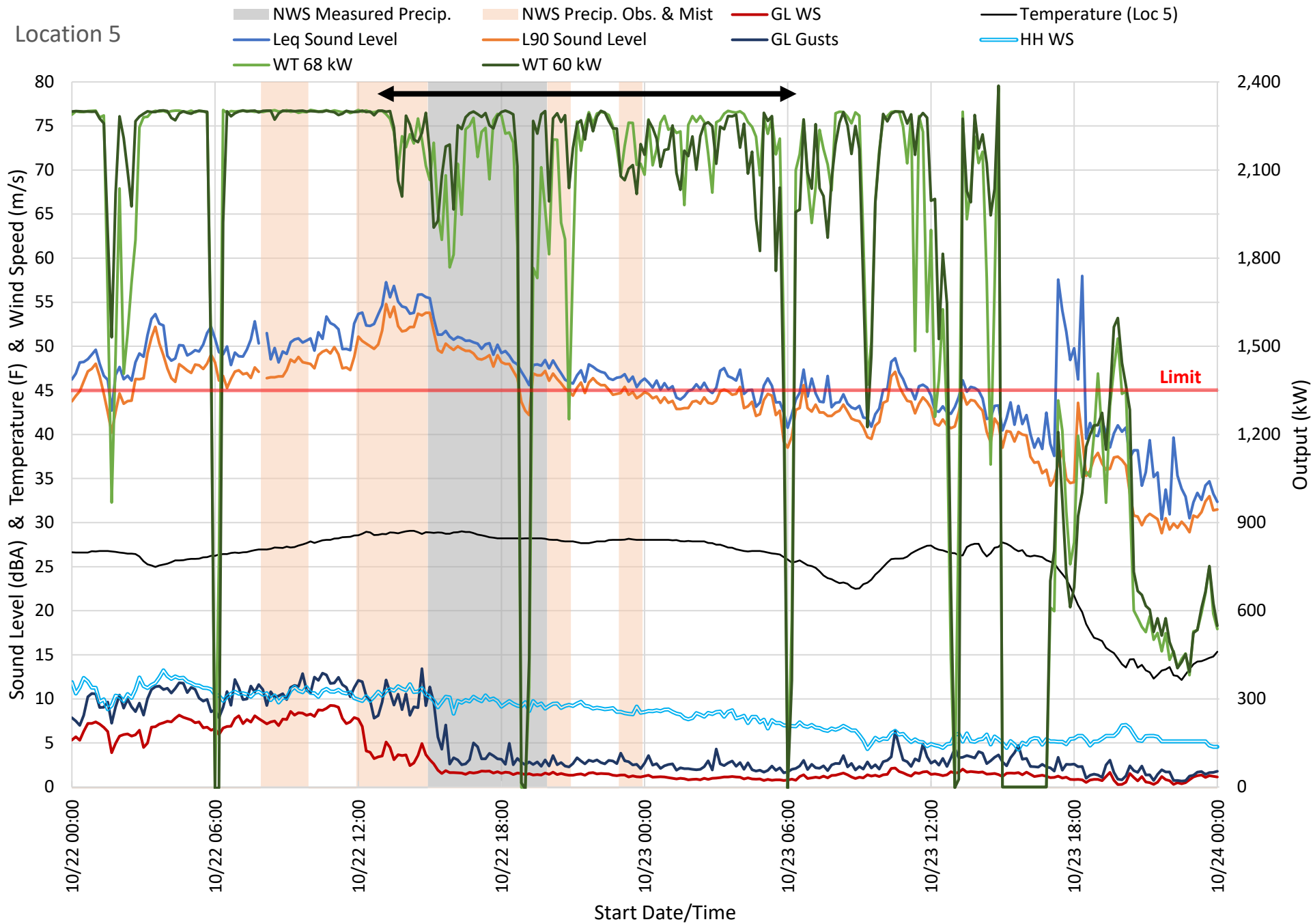


# Location 4

- NWS Measured Precip.
- NWS Precip. Obs. & Mist
- GL WS
- Temperature (Loc 5)
- Leq Sound Level
- L90 Sound Level
- GL Gusts
- HH WS
- WT 6 kW
- WT 7 kW



# Location 5



Location 6

- NWS Measured Precip.
- NWS Precip. Obs. & Mist
- GL WS
- Temperature (Loc 5)
- Leq Sound Level
- L90 Sound Level
- GL Gusts
- HH WS
- WT 38 kW
- WT 37 kW

