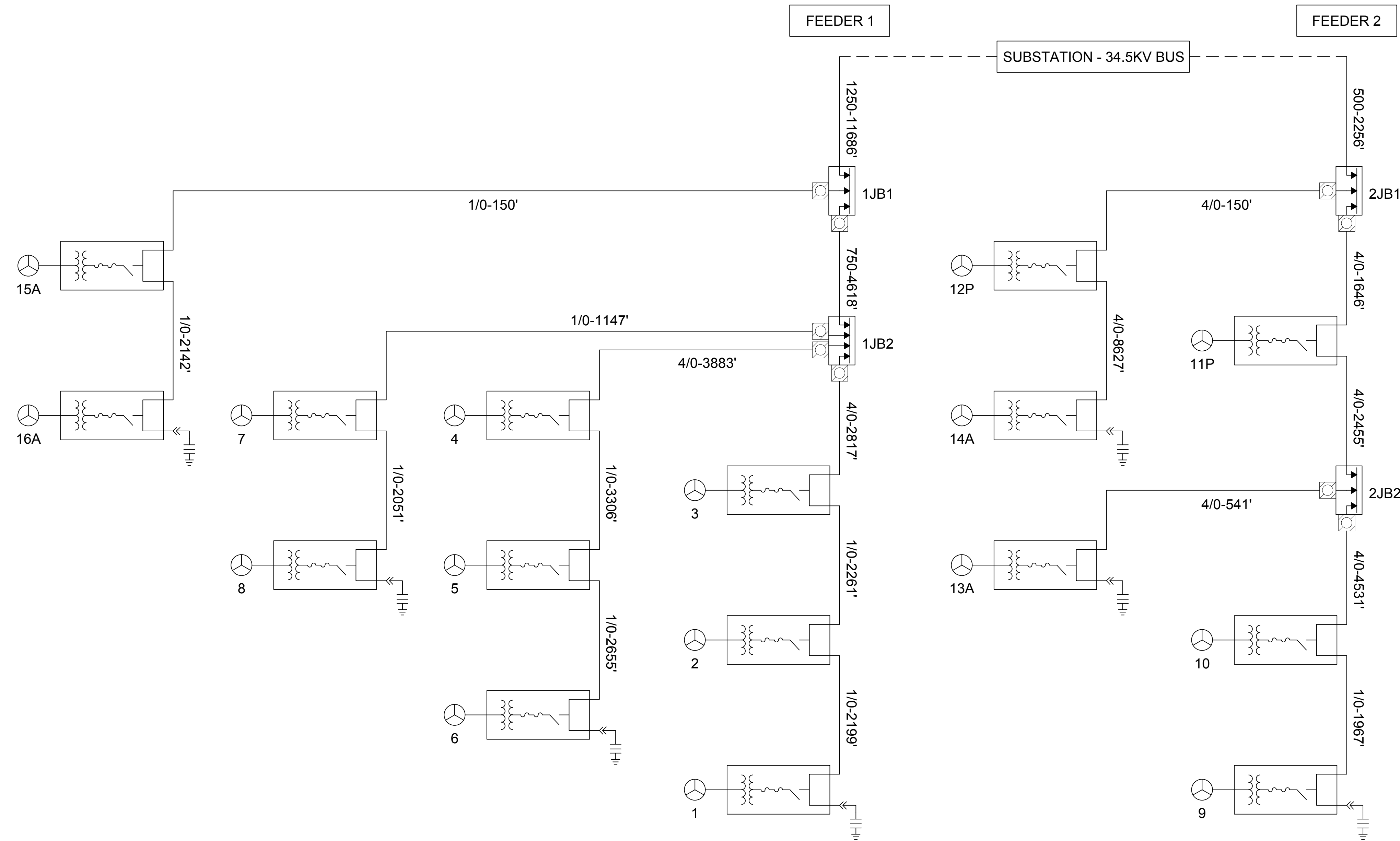
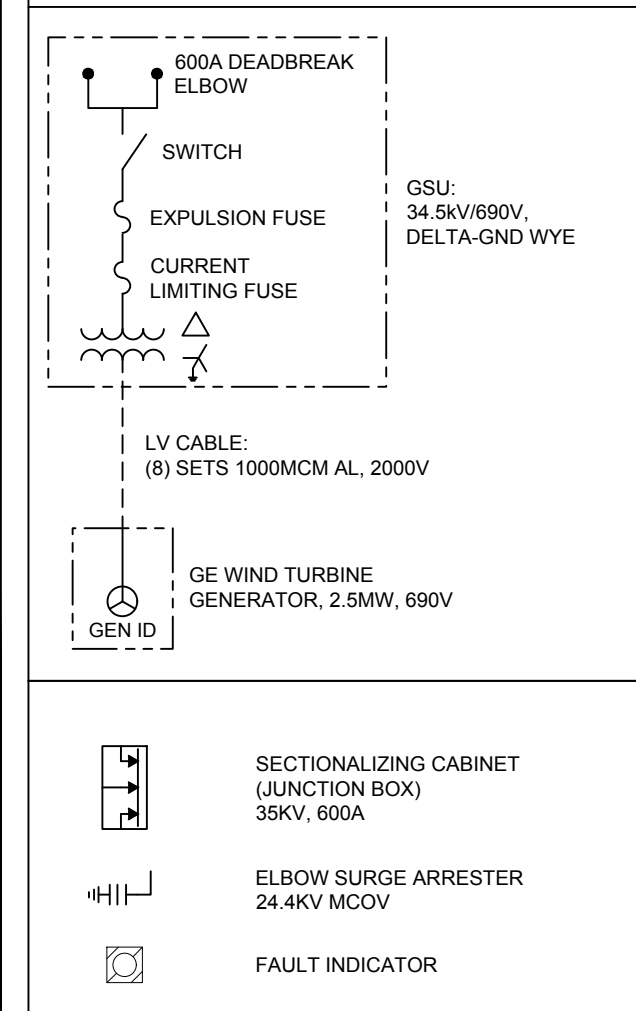


Exhibit 2



ONE LINE LEGEND



NOTES:
 1. CABLE LENGTHS LISTED ARE STRAIGHT LINE DISTANCES WITH 50 FEET ADDED TO EACH END. CONTRACTOR TO ADD APPROPRIATE SLACK FOR WASTE, TERMINATIONS, AND TERRAIN.

UNDERGROUND CABLE (35KV):
 1/0 AWG AL, 1/3 CONCENTRIC
 4/0 AWG AL, 1/3 CONCENTRIC
 500 MCM AL, 1/6 CONCENTRIC
 750 MCM AL, 1/6 CONCENTRIC
 1000 MCM AL, 1/12 CONCENTRIC
 1250 MCM AL, 1/12 CONCENTRIC

TRENCH GROUND:
 7-#8 COPPER-CLAD STEEL (40%)

CORRIEDALE WIND PROJECT

LARAMIE COUNTY, WYOMING

Rev.	Date	Description	By
A	10/10/2018	ISSUED FOR REVIEW	UEI

BLACK HILLS ELECTRIC GENERATION, LLC
 PO BOX 1400
 RAPID CITY, SD 57709



PRELIMINARY

NOT FOR CONSTRUCTION

THIS DRAWING IS PRELIMINARY AND IS NOT TO BE USED FOR CONSTRUCTION. FOR REVIEW PURPOSES ONLY.

3350 38th Avenue South
 Fargo, North Dakota 58104
 Phone: 701.280.8500
 www.ulteig.com

Ulteig
 We listen. We solve.[™]
 Bismarck - Denver - Detroit Lakes - Fargo - Sioux Falls - St. Paul
 Design By: J. HERMANSON
 Drawn By: A. SATHER
 Approved By:
 Project Number: 18.01348

COLLECTION SYSTEM ONE LINE DIAGRAM 40 MW OPTION