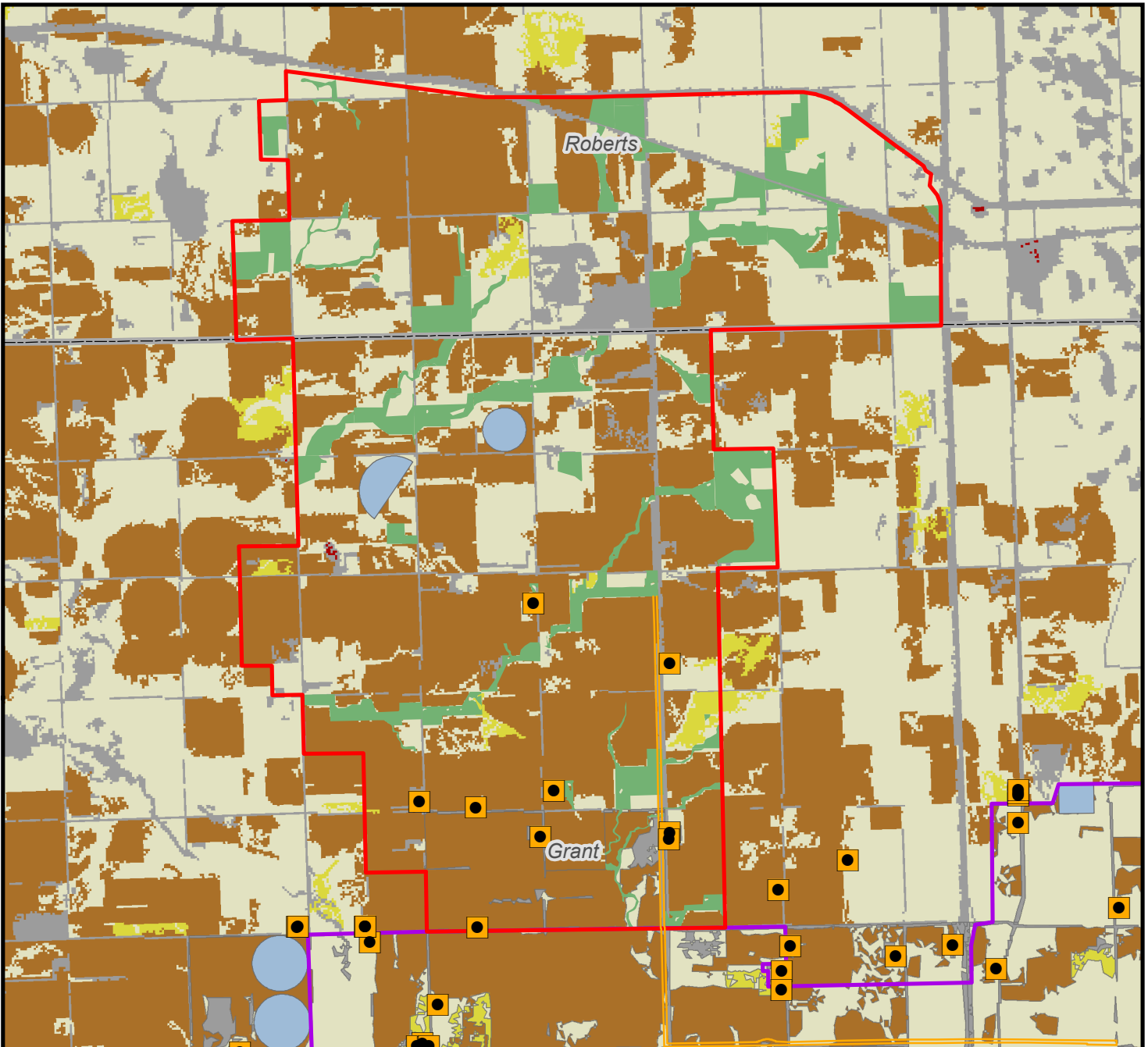


Path: \\bmcdfs\resources\Local\clients\KCM\ENR\110539_DakotaRangeIII\ArcGIS\Geospatial\DataFiles\ArcDocs\DakotaRange_III_LandUse.mxd 10/16/2018
 COPYRIGHT © 2018 BURNS & McDONNELL ENGINEERING COMPANY, INC.



Land Use Classification

- Land used primarily for row and nonrow crops in rotation
- Pasturelands and rangelands
- Haylands
- Other (i.e., developed, open water, wetlands, forested, shrub/scrub)
- Irrigated lands
- Undisturbed Native Grasslands
- Rural residences and farmsteads, family farms, and ranches
- Public, commercial, and institutional use
- Noise sensitive land uses

The following land use classifications were not identified within the Project Area:

- Existing and potential extractive nonrenewable resources
- Other major industries
- Municipal water supply and water sources for organized rural water systems

- Transmission Line ROW
- Project Area: Dakota Range III
- Dakota Range I/II
- County Boundary

NORTH

0 0.5 1 2
Scale in Miles

Land Use
 Dakota Range III
 Wind Energy Facility
 & Transmission Line
 SDPUC Application