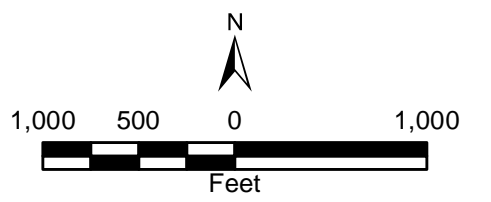


- Proposed Facilities**
- Proposed Point of Interconnect
 - Proposed Route
 - Bitter Root Electrical Collection
 - Project Study Area (1 Mile in SD)
 - Proposed Project Substation
- National Hydrography Dataset**
- River/Stream
 - Lake/Pond
- National Wetland Inventory**
- Freshwater Forested/Shrub Wetland
 - Freshwater Emergent Wetland
 - Freshwater Pond
 - Riverine
 - Watershed Boundary (HUC 12)
 - State Boundary
 - County Boundary
 - Township/Range Boundary



Imagery Source: ESRI World Imagery
 Data Source: RES Americas, Census, USGS, USFWS, State of South Dakota
 Date: 9/26/2018 Time: 10:13:49 AM User: MueKJ0907

BITTER ROOT 345 kV TRANSMISSION LINE AND SUBSTATION

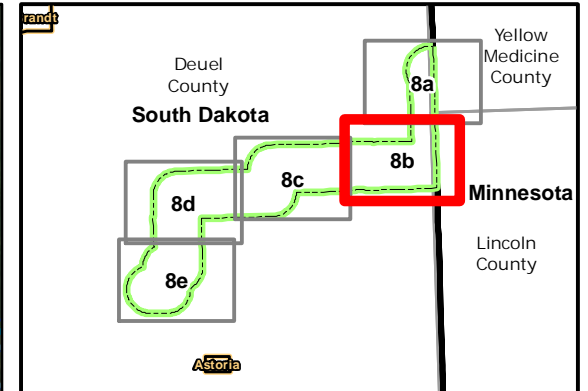
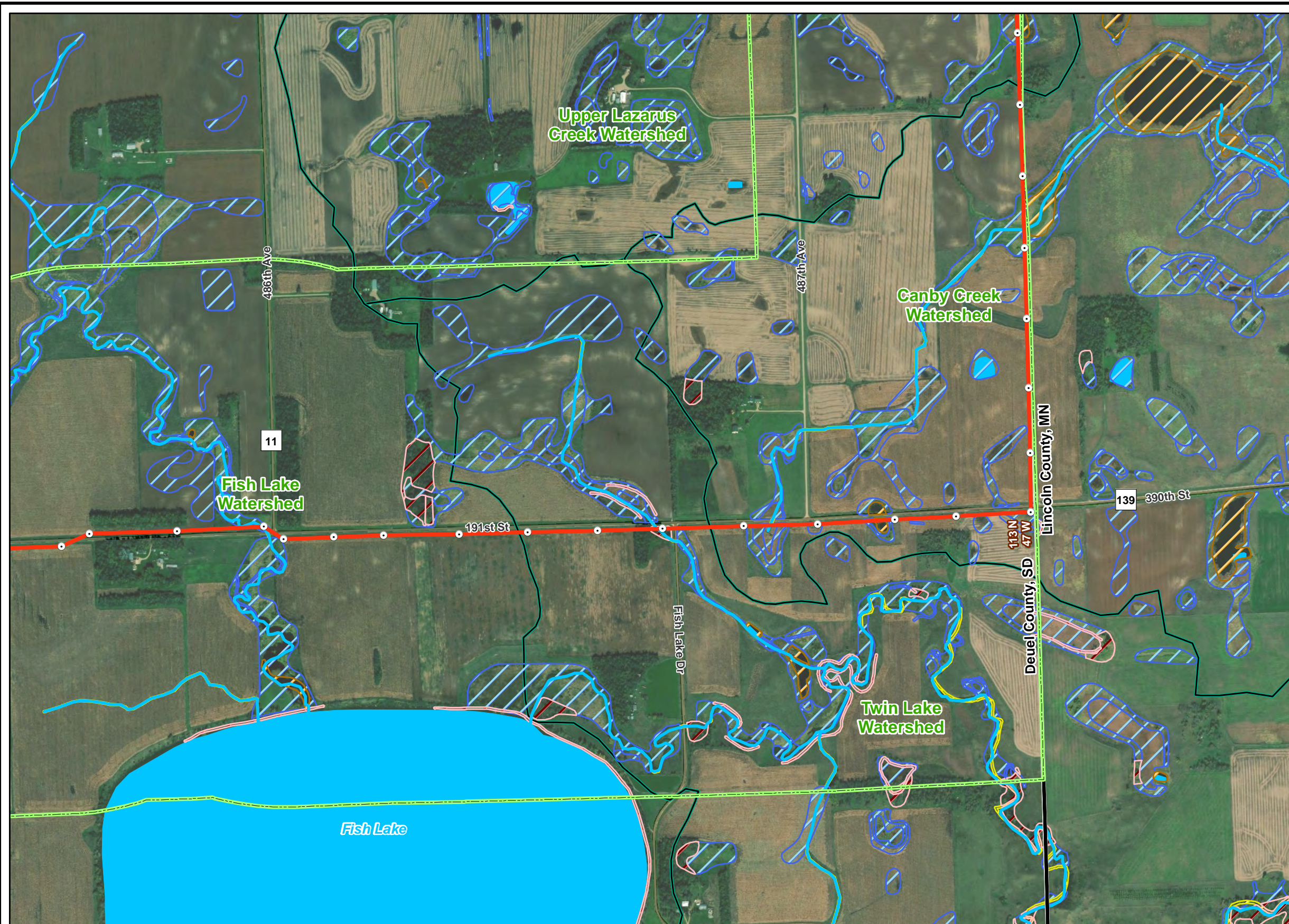
Detailed Map of Surface Waters and Wetlands



SEPT 2018

Exhibit 8a

Path: L:\4480001\mxd\HVIL_Facility_Permit\Exhibit_8_Surface_Waters.mxd



Proposed Facilities

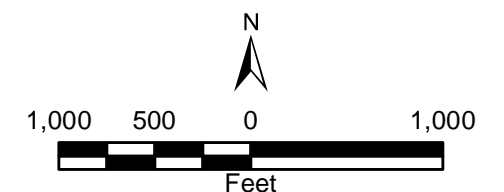
- Proposed Point of Interconnect
- Proposed Route
- Bitter Root Electrical Collection
- Project Study Area (1 Mile in SD)
- Proposed Project Substation

National Hydrography Dataset

- River/Stream
- Lake/Pond

National Wetland Inventory

- Freshwater Forested/Shrub Wetland
- Freshwater Emergent Wetland
- Freshwater Pond
- Riverine
- Watershed Boundary (HUC 12)
- State Boundary
- County Boundary
- Township/Range Boundary



Imagery Source: ESRI World Imagery
 Data Source: RES Americas, Census, USGS, USFWS, State of South Dakota
 Date: 9/26/2018 Time: 10:14:07 AM User: MueKJ0907

BITTER ROOT 345 kV TRANSMISSION LINE AND SUBSTATION

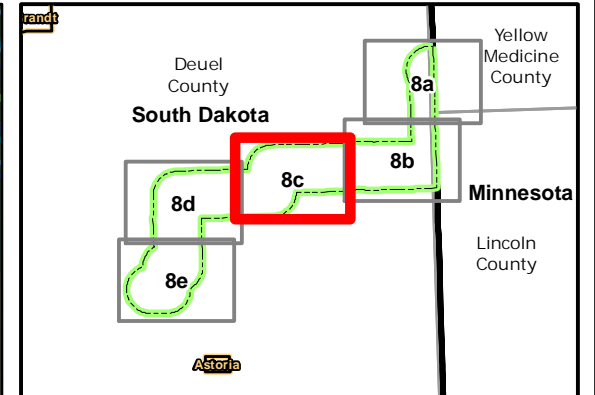
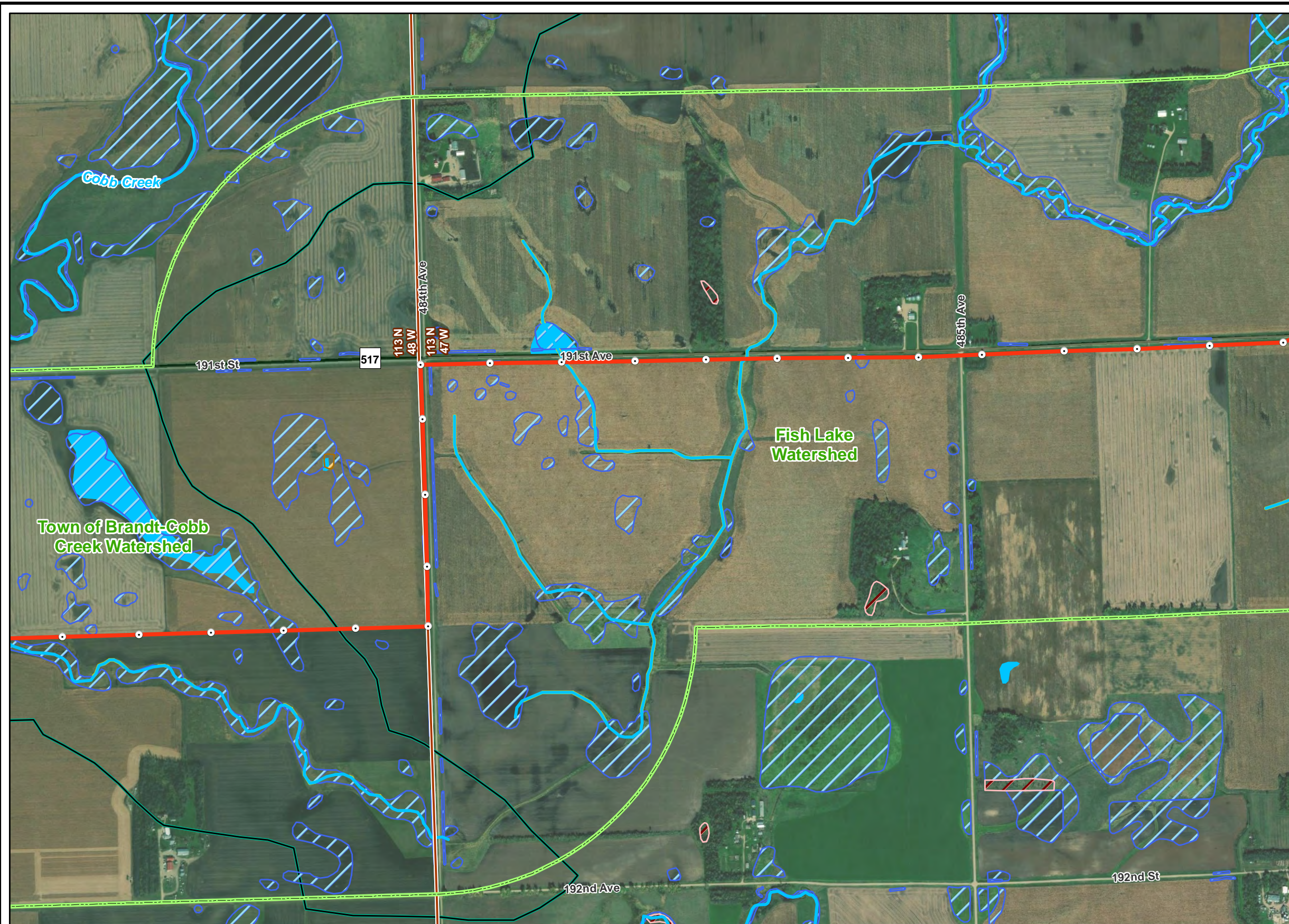
Detailed Map of Surface Waters and Wetlands



SEPT 2018

Exhibit 8b

Path: L:\4480001\mxd\HVIL_Facility_Permit\Exhibit_8_Surface_Waters.mxd



Proposed Facilities

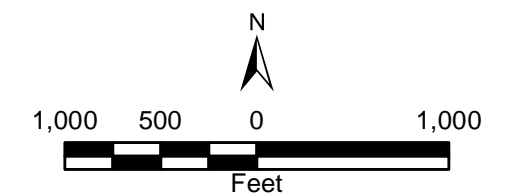
- Proposed Point of Interconnect
- Proposed Route
- Bitter Root Electrical Collection
- Project Study Area (1 Mile in SD)
- Proposed Project Substation

National Hydrography Dataset

- River/Stream
- Lake/Pond

National Wetland Inventory

- Freshwater Forested/Shrub Wetland
- Freshwater Emergent Wetland
- Freshwater Pond
- Riverine
- Watershed Boundary (HUC 12)
- State Boundary
- County Boundary
- Township/Range Boundary



Imagery Source: ESRI World Imagery
 Data Source: RES Americas, Census, USGS, USFWS, State of South Dakota
 Date: 9/26/2018 Time: 10:14:24 AM User: MueKJ0907

BITTER ROOT 345 kV TRANSMISSION LINE AND SUBSTATION

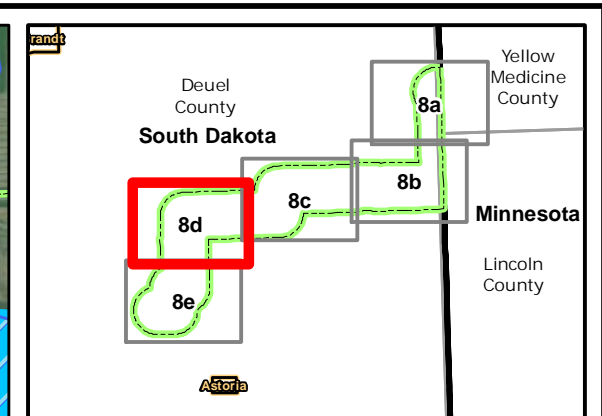
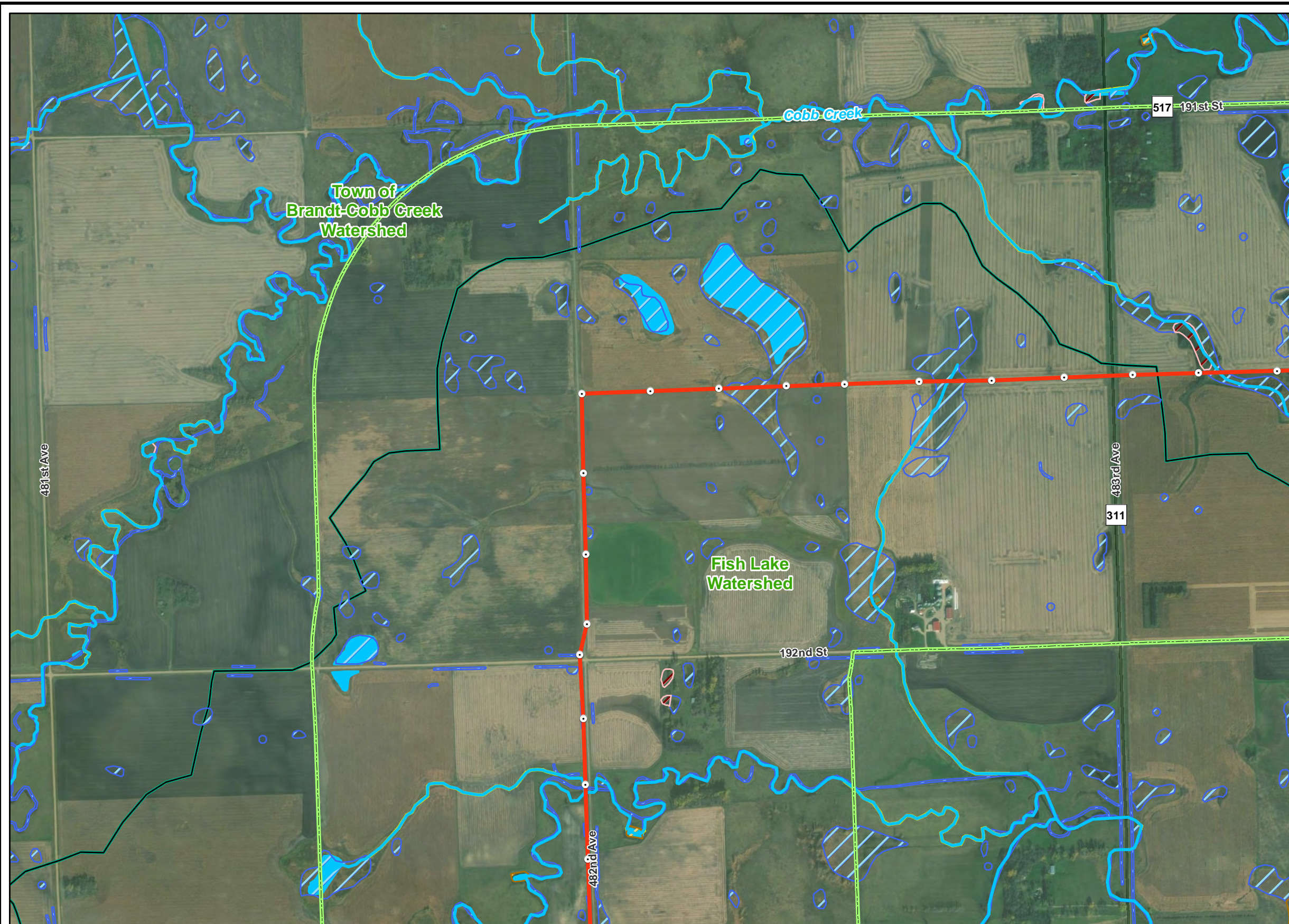
Detailed Map of Surface Waters and Wetlands



SEPT 2018

Exhibit 8c

Path: L:\4480001\mxd\HV_IL_Facility_Permit\Exhibit_8_Surface_Waters.mxd



Proposed Facilities

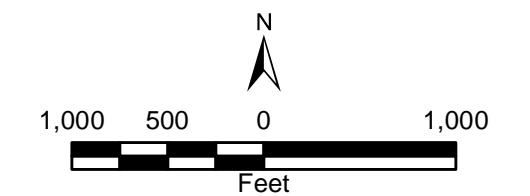
- Proposed Point of Interconnect
- Proposed Route
- Bitter Root Electrical Collection
- Project Study Area (1 Mile in SD)
- Proposed Project Substation

National Hydrography Dataset

- River/Stream
- Lake/Pond

National Wetland Inventory

- Freshwater Forested/Shrub Wetland
- Freshwater Emergent Wetland
- Freshwater Pond
- Riverine
- Watershed Boundary (HUC 12)
- State Boundary
- County Boundary
- Township/Range Boundary



Imagery Source: ESRI World Imagery
 Data Source: RES Americas, Census, USGS, USFWS, State of South Dakota
 Date: 9/26/2018 Time: 10:14:43 AM User: MueKJ0907

BITTER ROOT 345 kV TRANSMISSION LINE AND SUBSTATION

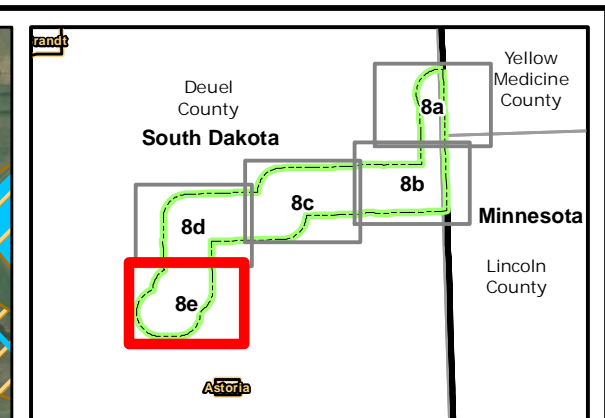
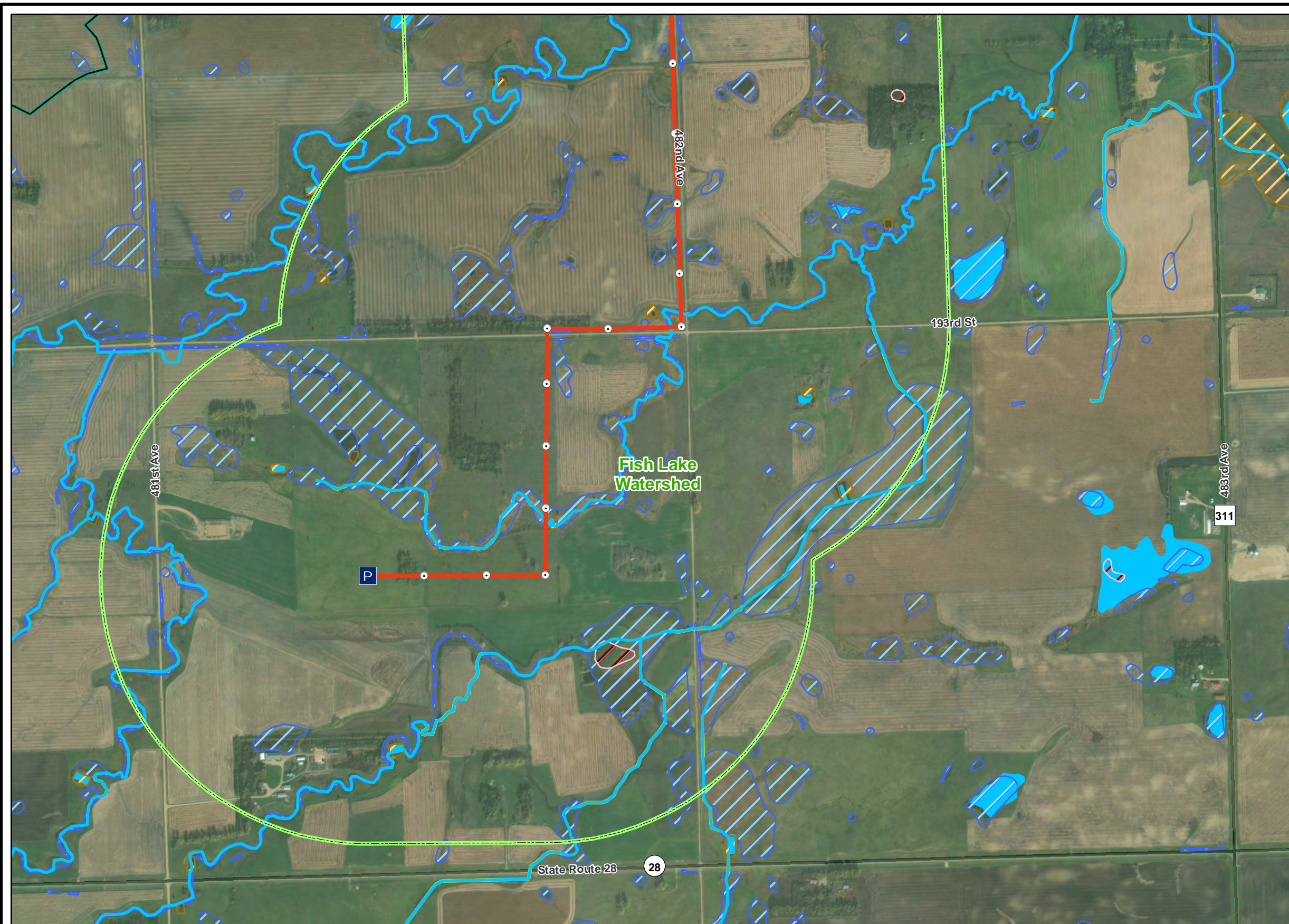
Detailed Map of Surface Waters and Wetlands



SEPT 2018

Exhibit 8d

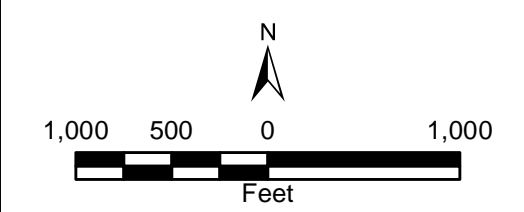
Path: L:\4480001\mxd\HVIL_Facility_Permit\Exhibit_8_Surface_Waters.mxd



- Proposed Facilities**
- Proposed Point of Interconnect
 - Proposed Route
 - Bitter Root Electrical Collection
 - Project Study Area (1 Mile in SD)
 - Proposed Project Substation

- National Hydrography Dataset**
- ~ River/Stream
 - Lake/Pond

- National Wetland Inventory**
- Freshwater Forested/Shrub Wetland
 - Freshwater Emergent Wetland
 - Freshwater Pond
 - Riverine
 - Watershed Boundary (HUC 12)
 - State Boundary
 - County Boundary
 - Township/Range Boundary



Imagery Source: ESRI World Imagery
Data Source: RES Americas, Census, USGS, USFWS, State of South Dakota
Date: 9/26/2018 Time: 10:15:00 AM User: MueKJ0907

BITTER ROOT 345 kV TRANSMISSION LINE AND SUBSTATION

Detailed Map of Surface Waters and Wetlands



SEPT 2018

Exhibit 8e

Path: L:\4480001\mxd\HVIL_Facility_Permit\Exhibit_8_Surface_Waters.mxd