



Prevailing Wind Park Project

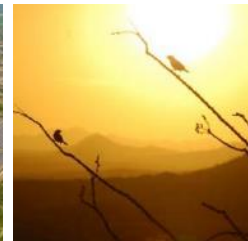
Bon Homme, Charles Mix, and Hutchinson Counties, South Dakota

South Dakota Public Utilities Commission

Public Input Hearing July 12, 2018

About sPower

Renewable Energy. Sustainable Future.™



150+ Projects
North America

5 Billion kWh Generated
And Counting

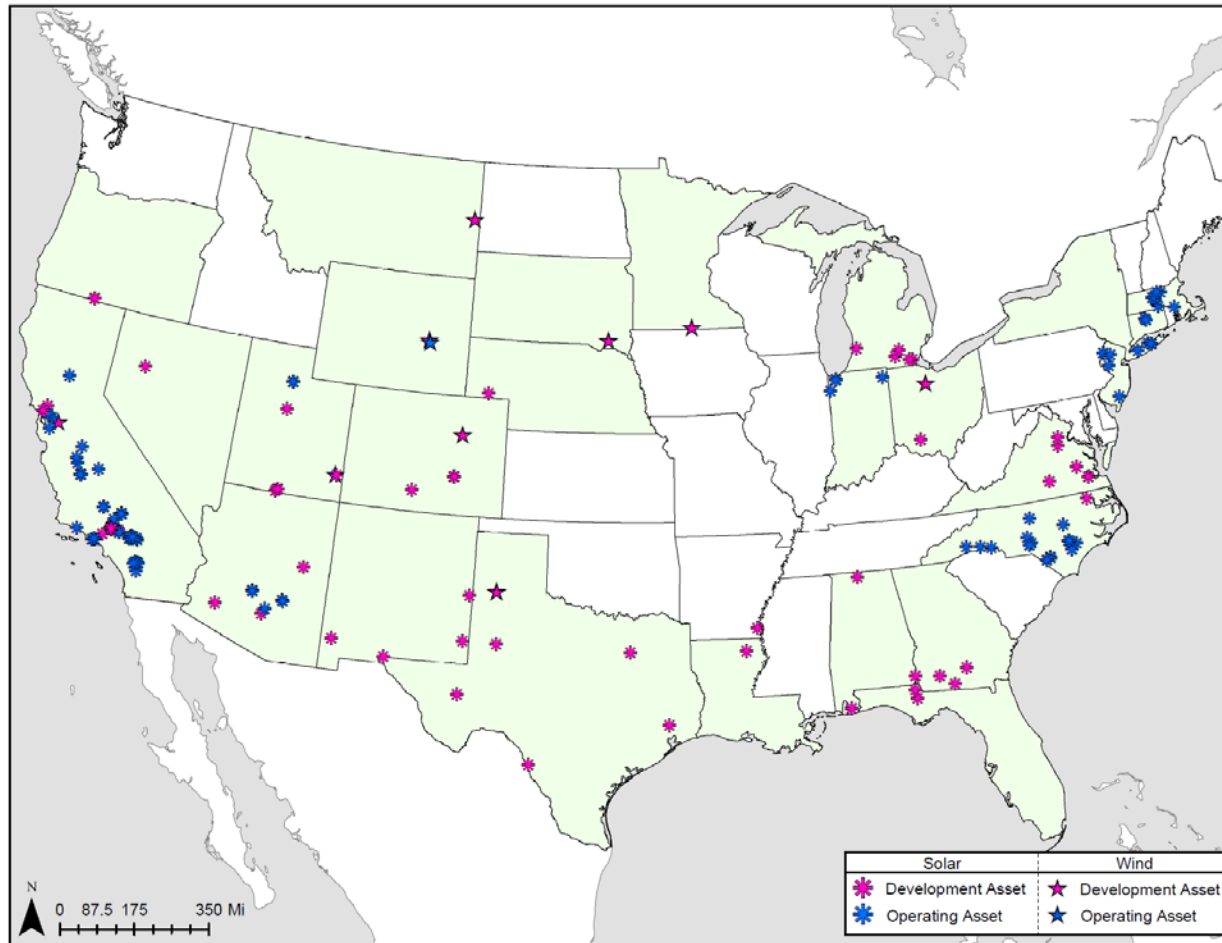
1.3 GW
Operating Assets

13+ GW
Operating | Construction | Pipeline



sPower Projects

1.3GW | 5,145,000,000 kWh Generated



Prevailing Wind Park

Project Overview

Owner: Prevailing Wind Park, LLC (2017)

Capacity = 219.6 MW

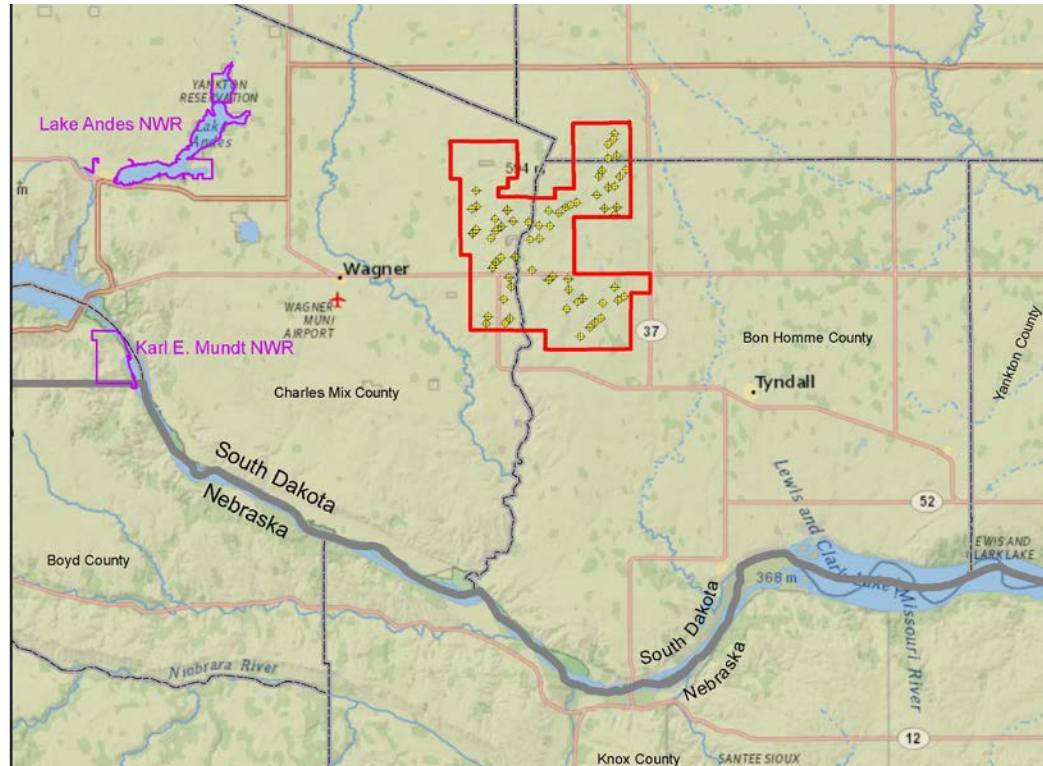
Land = 100% of land under easement, approximately 50,364 acres

Proposed Facility

- Up to 61 turbines in Bon Homme, Charles Mix, and Hutchinson counties.
 - Maximum turbine height: 590 feet
 - Maximum rotor diameter: 449 feet
- Access roads, crane paths, collector lines, and fiber-optic cables
- Operations and maintenance facility
- Up to 4 permanent meteorological towers
- Project substation

Prevailing Wind Park

PROJECT CONFIGURATION



Prevailing Wind Park

Project Need / Schedule

Power Purchase Agreement: Basin Electric Power Cooperative

Interconnection: Western Area Power Administration Utica Junction Substation

Milestones:

Fourth Quarter 2018

- SDPUC Permit
- WAPA completes environmental review
- Other Federal, State and local permits
- Construction Start

Fourth Quarter 2019

- Commercial Operation Date

Prevailing Wind Park

Site Selection

- Strong wind resource
- Compatible land use
- Available transmission: WAPA
Utica Junction Substation
- Community and landowner support

Prevailing Wind Park

Studies Conducted

Study	Dates	Status
Tiers 1 and 2 Report	June 2016	Complete
Raptor Nest Survey	April 2016	Complete
Avian Use Surveys – Year One	March 2015-February 2016	Complete
Avian Use Surveys – Year Two	May 2016-April 2017	Complete
Whooping Crane Habitat Review	August 2016	Complete
Bald Eagle Nest Monitoring	March-July 2015 May-September 2016	Complete
Bird and Bat Conservation Strategy	May 2018	Complete
Northern Long-Eared Bat Acoustic Survey	July-August 2015	Complete
Northern Long-Eared Bat Presence/Absence Survey	July-August 2016	Complete
Rare Plant Habitat Assessment	May-June 2018	Complete
Native Grassland Field Verification	May-June 2018	Complete
Wetland Desktop Determination	March 2018	Complete
Wetland Field Delineation	May-June 2018	Complete
Cultural Resources Literature Search	April 2018	Complete
Cultural Resources Desktop Review and Construction Grid	April 2018	Complete
Cultural Resources Archeological Survey	June-July 2018	In process
Historical/Architectural Survey	June-July 2018	In process
Engineering Report on Effects to FCC-Licensed RF Facilities	April 2016	Complete
Sound Study	April 2018	Complete
Shadow Flicker Analysis	May 2018	Complete

Prevailing Wind Park

Agency Coordination

Throughout Project planning and development, the Applicant and its predecessor, Prevailing Winds, LLC, have coordinated with various Federal, State, and local agencies and governmental authorities to identify potential concerns regarding the proposed Project. The Applicant has coordinated with:

- USFWS and SDGFP
- WAPA (SHPO and Tribes)
- PUC
- Counties
- Townships

Prevailing Wind Park

Regulatory Compliance

The Project complies with all Federal, State, and local laws.

State Wind Turbine Setback:

- At least 500 feet or 1.1 times the height of the tower, whichever is greater, from any surrounding property line

Bon Homme County Wind Turbine Setbacks (used in all three counties):

- At least 1,000 feet from currently occupied off-site residences, business and public buildings
- At least 500 feet from the residence of the landowner on whose property the tower(s) are erected or 1.1 times the system height, whichever is greater
- At least 500 feet from right-of-way of public roads or 1.1 times the system height, whichever is greater
- At least 500 feet or 1.1 times the system height, whichever is greater, from property line from adjoining property owner, unless appropriate easement obtained

Prevailing Wind Park

Regulatory Compliance (cont'd)

Bon Homme County Noise Standard (met in all three counties):

- Noise level produced shall not exceed 45 dBA at inhabited dwelling existing at the time the permit application is filed, unless a signed waiver or easement is obtained from the owner of the dwelling. Acoustic studies demonstrate levels will be below 42 dBA.

Shadow Flicker Commitment (all three counties):

- Shadow flicker produced by the wind turbines will not exceed 30 hours per year at currently inhabited dwellings of non-participants.

Prevailing Wind Park

Voluntary Commitment – ADL System

sPower will install an Aircraft Detection Lighting System (ADLS) on Project turbines pending approval by FAA

Tall structures are required to be lit by the FAA as a safety precaution for pilots. The ADLS is designed to mitigate the impact of nighttime lights by deploying a radar-based system around a windfarm, turning lights on only when low-flying aircraft are detected nearby. The ADLS sends a signal to keep the light off until a plane is detected, then it stops sending the signal and the lights operate normally until the plane leaves the area and the off signal resumes.

Prevailing Wind Park

Workforce and Jobs

Local Workforce Development

- Career Fairs and Training
- Helmets to Hardhats – sPower puts our veterans to work by training quality men and women in the armed forces for construction careers.

Local Jobs

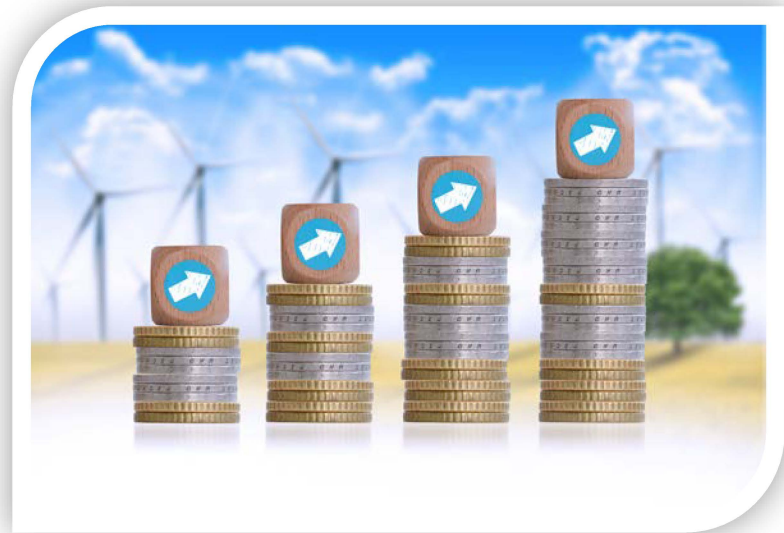
- Peaking at an estimated 245 workers per day over 12 months.
- Approximately 8-10 full time employed workers in the Project area.



Prevailing Wind Park

Benefits to Local Community

- \$1.2 million in annual income to landowners.
- Approximately \$743 thousand in annual tax revenues for Bon Homme, Hutchinson and Charles Mix counties, school and townships
- Up to \$100 million invested in construction activity alone
- Approximately \$11.1 million in State tax revenue from Project operations over the life of the Project



Prevailing Wind Park

Coordination

Coordination with Landowners and Local Authorities



Prevailing Wind Park

Wind Farm Construction

Construction Activities:

- Access Roads
- Foundation
- Equipment Delivery
- Erection of Wind Turbines
- Collector System
- Substation
- Restoration

Prevailing Wind Park

Wind Farm Construction

Access Roads



Prevailing Wind Park

Wind Farm Construction

Foundations



Prevailing Wind Park

Wind Farm Construction

Equipment Delivery



Prevailing Wind Park

Wind Farm Construction

Erection of turbines



Prevailing Wind Park

Wind Farm Construction

Collector System



Substation



Prevailing Wind Park

Wind Farm Construction

Post-construction Restoration



Prevailing Wind Park

Operations Overview

Remote Monitoring

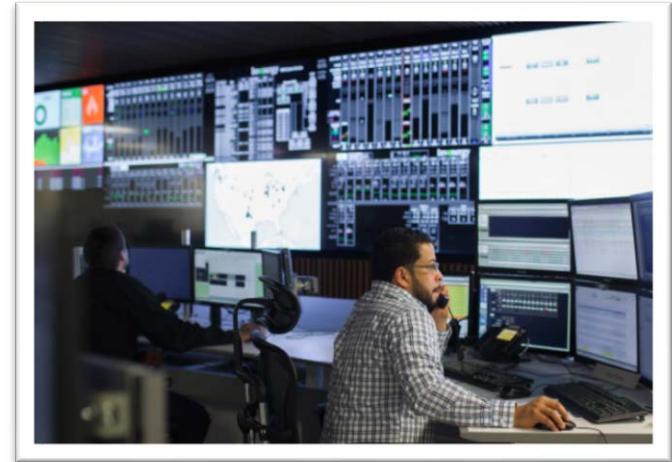
- 24-7 / 365 days a year remote monitoring
- Supervisory Control and Data Acquisition (SCADA) system
- Automatic remote shutdown capabilities.

Maintenance

- sPower will regularly inspect Project Sites to ensure all components are operating properly
- Turbine supplier will provide initial maintenance; sPower construction and operations staff will be on-call in the event of a maintenance issue

Security

- Project Sites will be fenced off with security access gates
- Securely installed enclosed electrical equipment
- Security lighting and cameras



Prevailing Wind Park

Decommissioning

Decommissioning



Prevailing Wind Park

Decommissioning

- Project owner will be responsible for removing facilities at end of commercial operations.
- Project owner will provide financial assurance as permits and applicable law require.
- Turbine and substation foundations will be removed to a depth of 48 inches unless otherwise agreed to by the landowner

Prevailing Wind Park



Prevailing Wind Park



www.spower.com