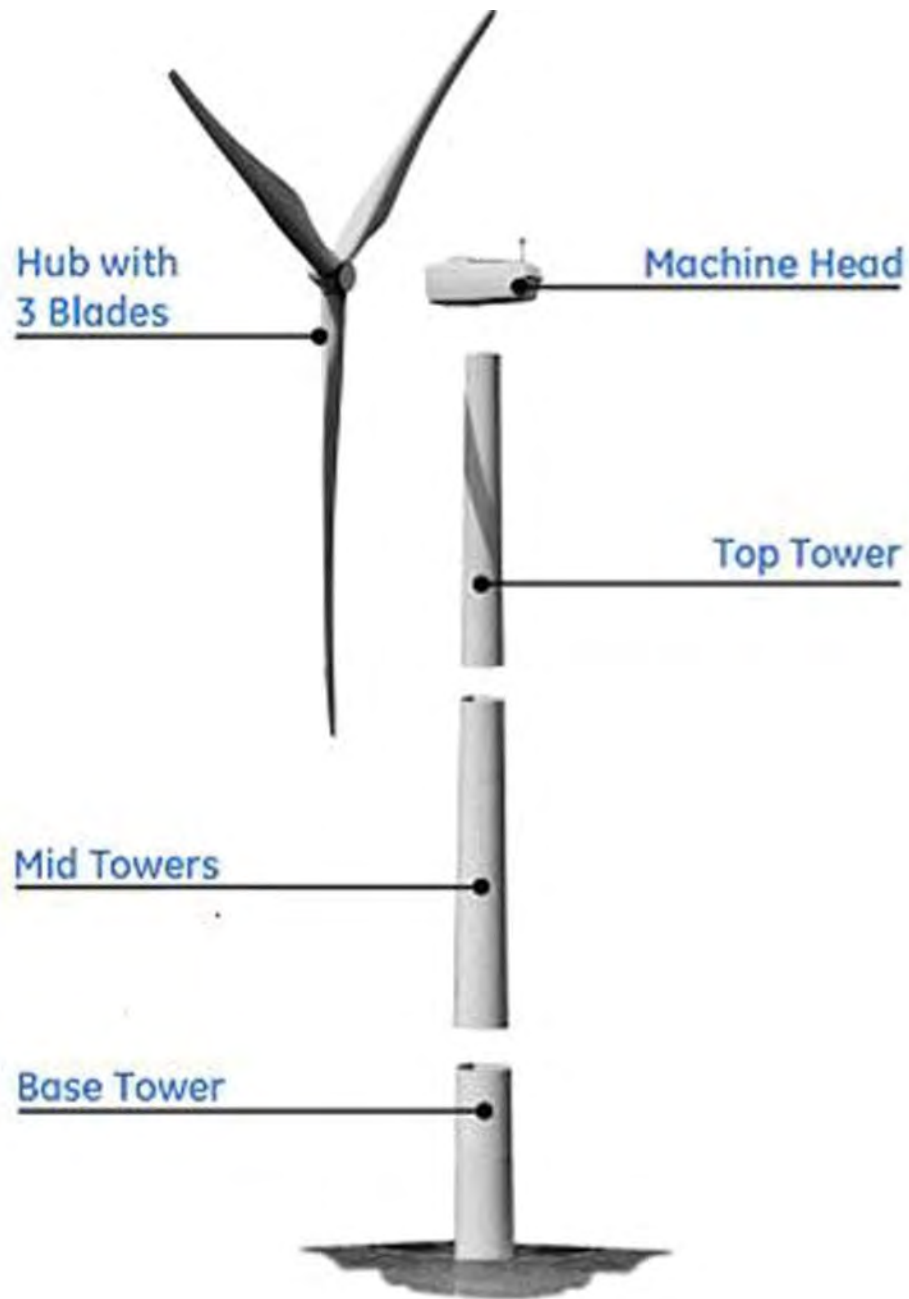


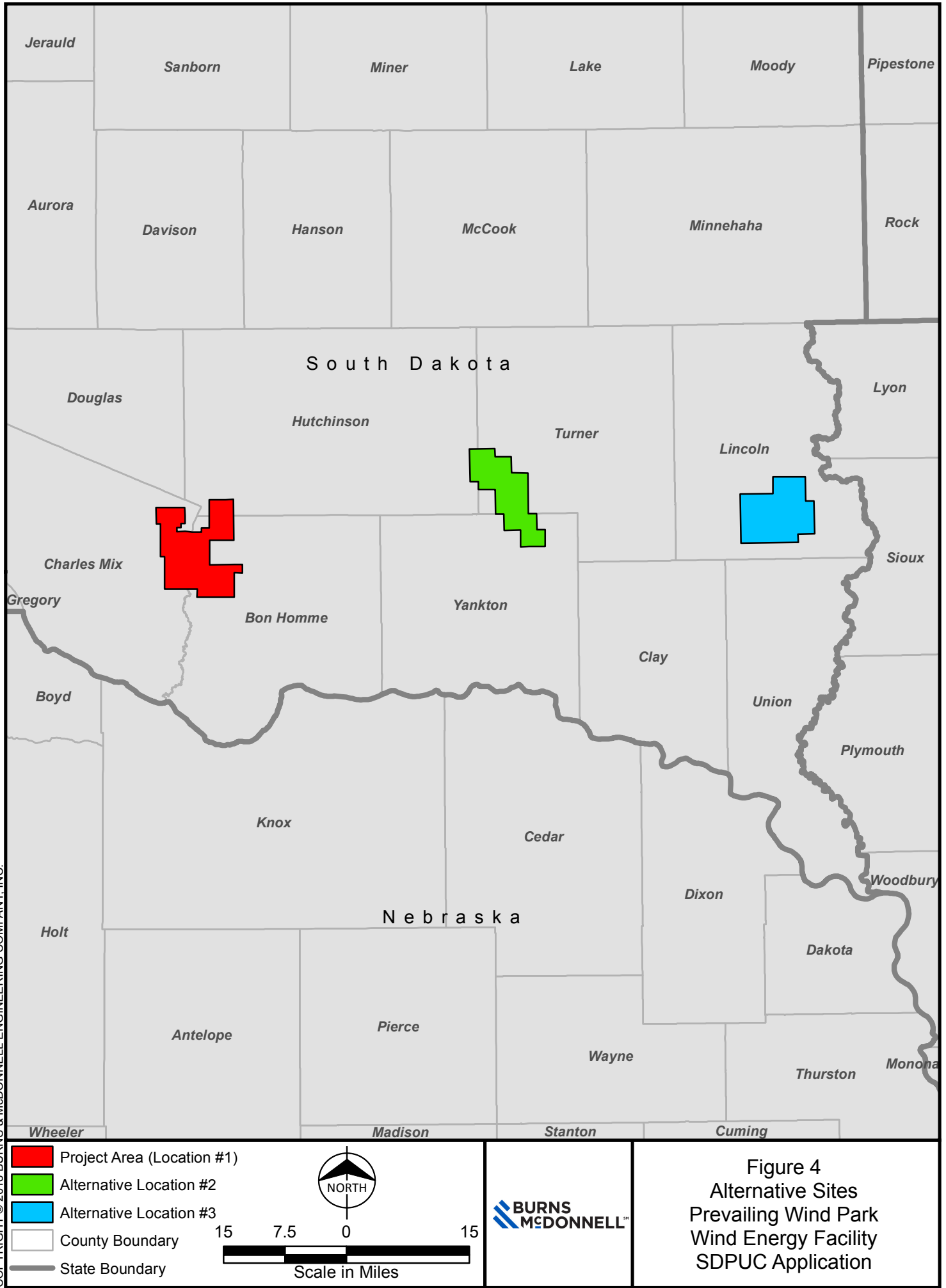
Figure 2  
 Configuration/Topographic Map  
 Prevailing Wind Park  
 Wind Energy Facility  
 SDPUC Application



Figure 3  
Representative Wind Turbine Components  
Prevailing Wind Park



Path: Z:\Clients\ENS\PowerGroup\104294\_PrevailingWindStudies\Geospatial\DataFiles\ArcDocs\Report\104294\_PW\_Fig5\_AltSites.mxd jbell 5/26/2018  
COPYRIGHT © 2018 BURNS & McDONNELL ENGINEERING COMPANY, INC.









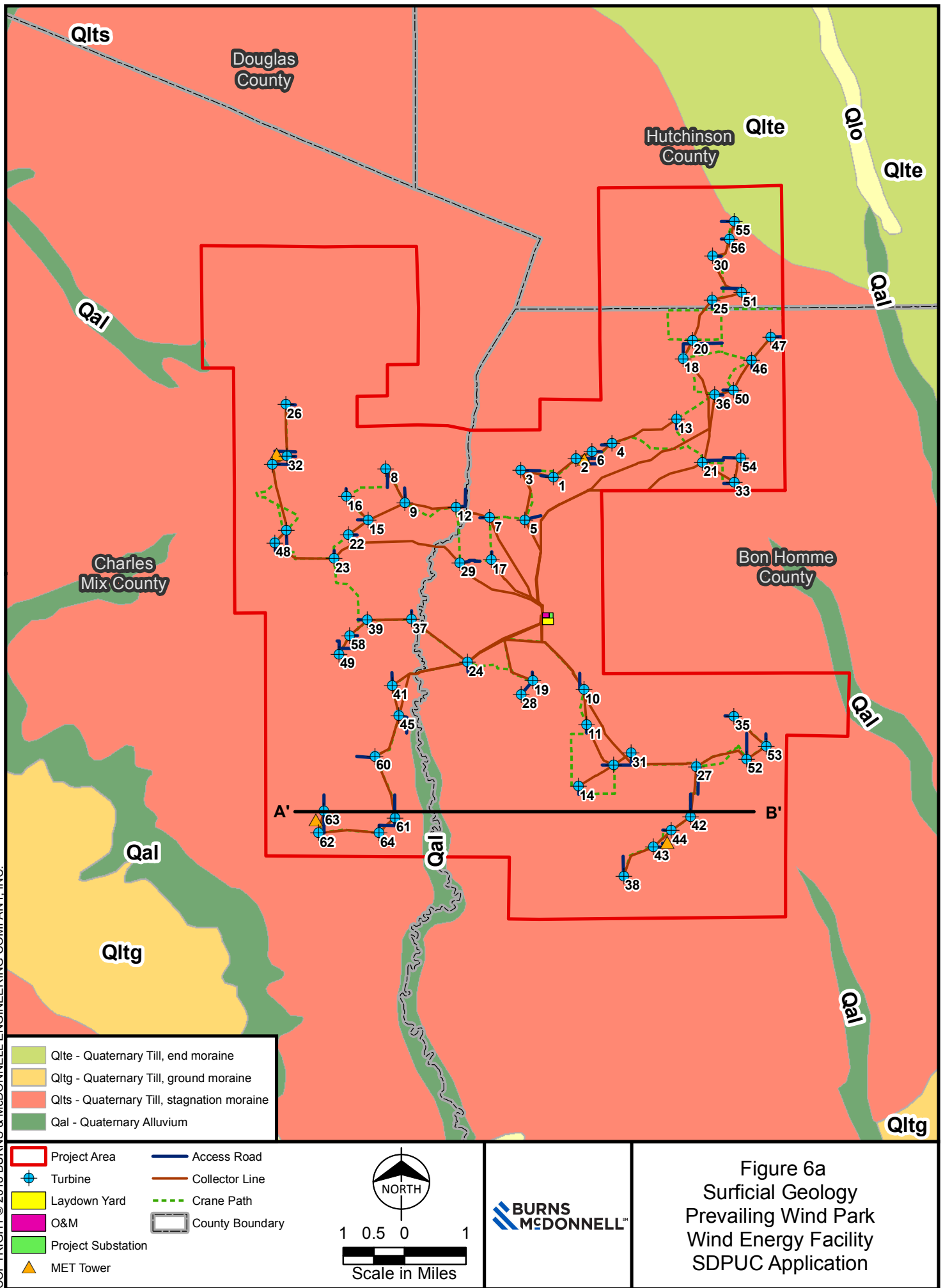
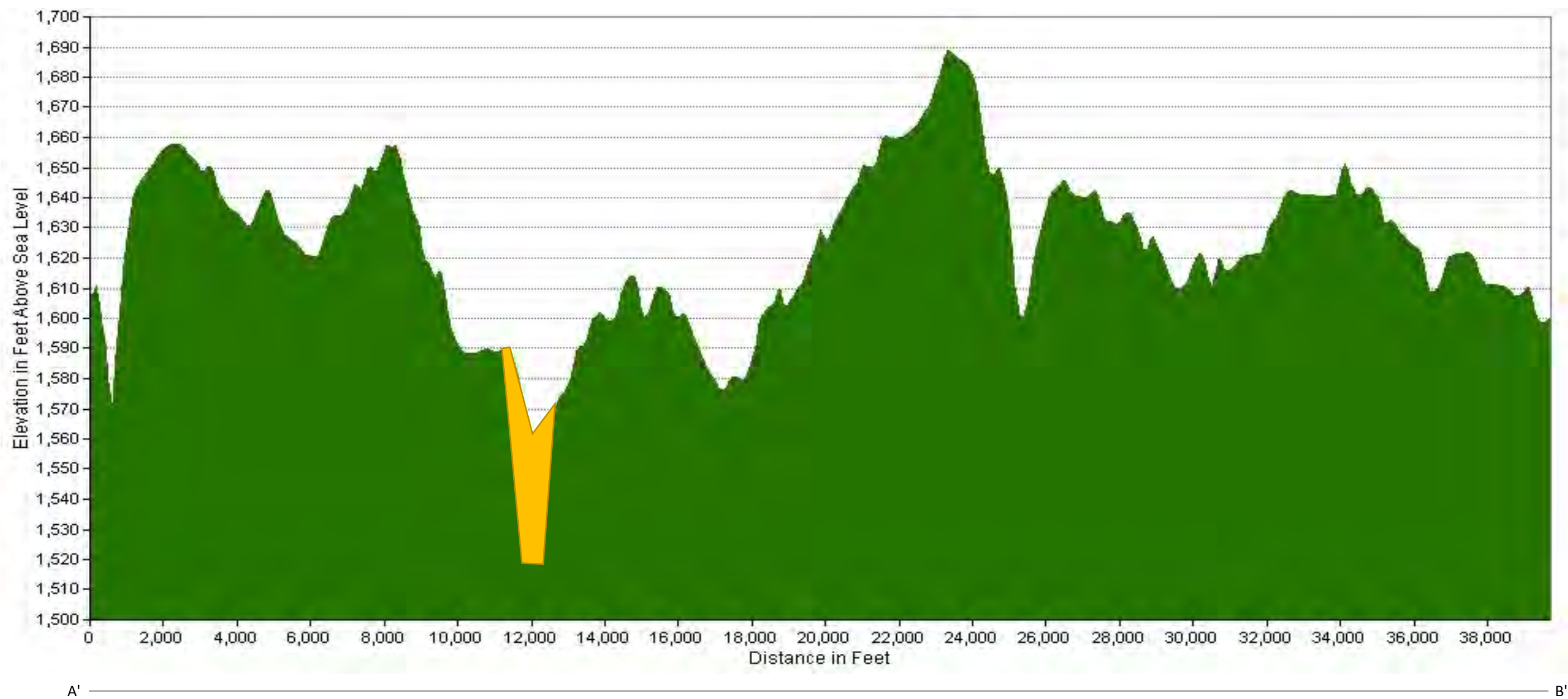


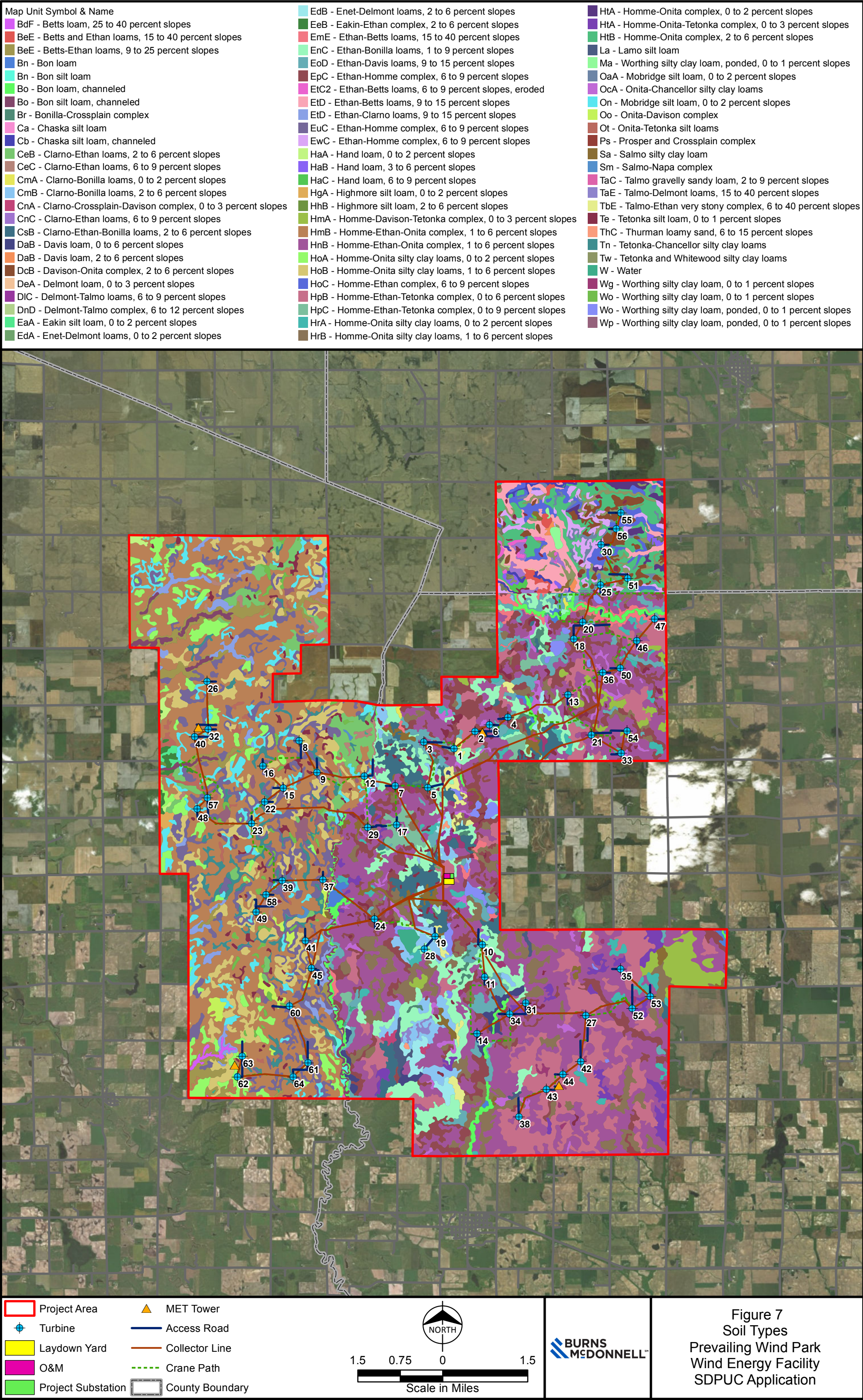
Figure 6a  
 Surficial Geology  
 Prevailing Wind Park  
 Wind Energy Facility  
 SDPUC Application



**Legend**  
Qal  
Qlts

Figure 6b  
Geologic Cross Section  
of Project Area  
Prevailing Wind Park





Project Area

Turbine

Laydown Yard

O&M

Project Substation

MET Tower

Access Road

Collector Line

Crane Path

County Boundary

NORTH

1.5 0.75 0 1.5

Scale in Miles

BURNS

MCDONNELL

Figure 7

Soil Types

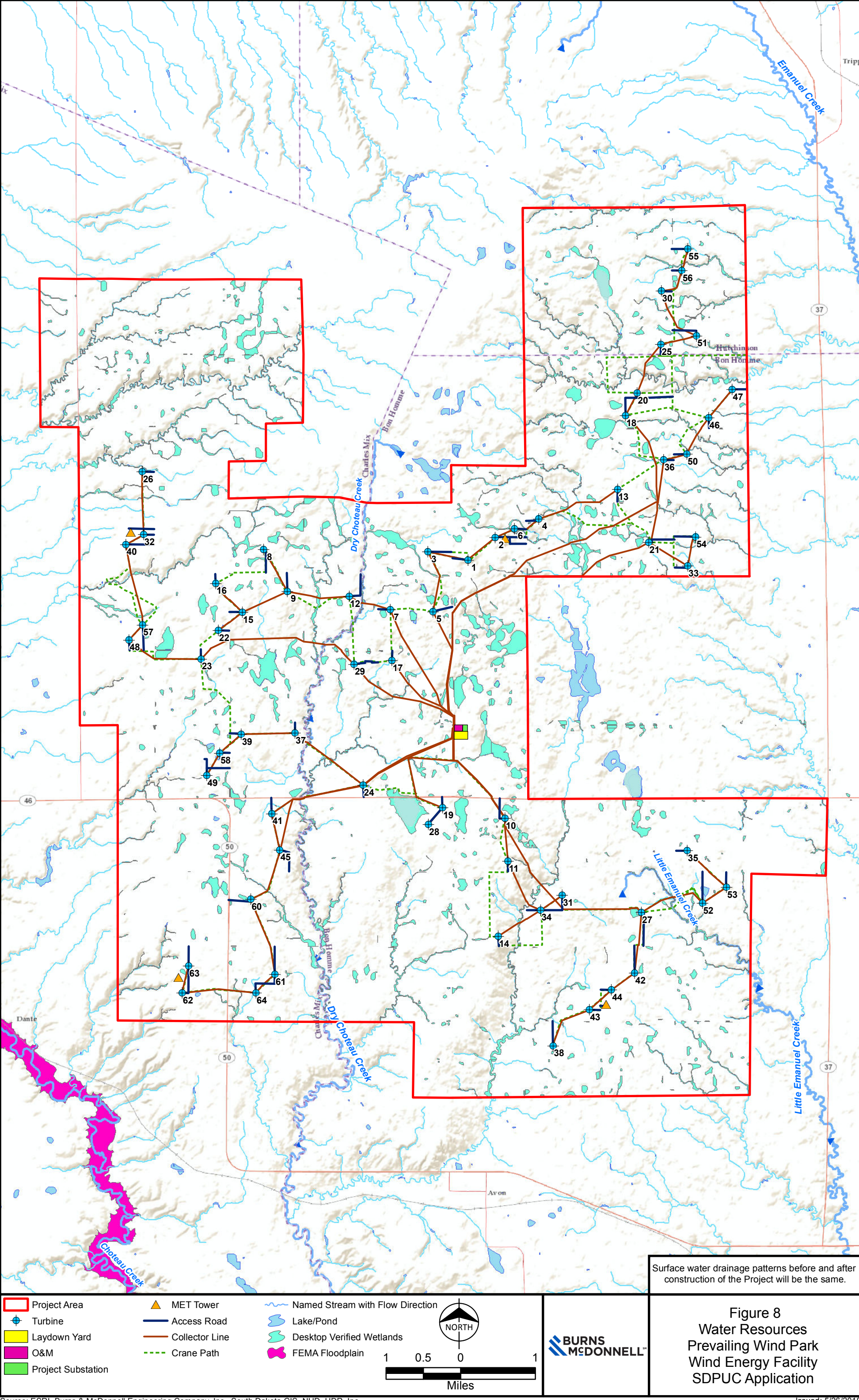
Prevailing Wind Park

Wind Energy Facility

SDPUC Application



Path: Z:\Clients\SPowerGroup\104294\_PrevailingWind\Studies\Geospatial\DataFiles\ArcDocs\Report\104294\_PW\_Fig9\_WaterResources.mxd jbell 5/26/2018  
COPYRIGHT © 2018 BURNS & McDONNELL ENGINEERING COMPANY, INC.  
Service Layer Credits: Sources: Esri, USGS, NOAA



Surface water drainage patterns before and after construction of the Project will be the same.

Figure 8  
Water Resources  
Prevailing Wind Park  
Wind Energy Facility  
SDPUC Application



