

Crowned Ridge II Transmission Line

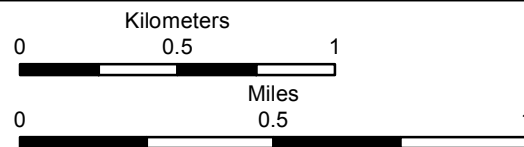
- Proposed Transmission Line
- Project Study Area (1 mile)
- *Crowned Ridge Wind Collector Substation
- Crowned Ridge Wind II Collector Substation
- Section Boundary
- Township/Range Boundary



116 North 4th Street
Suite 200
Bismarck, ND 58501

Phone: 701.258.6622
Fax: 701.258.5957

www.swca.com



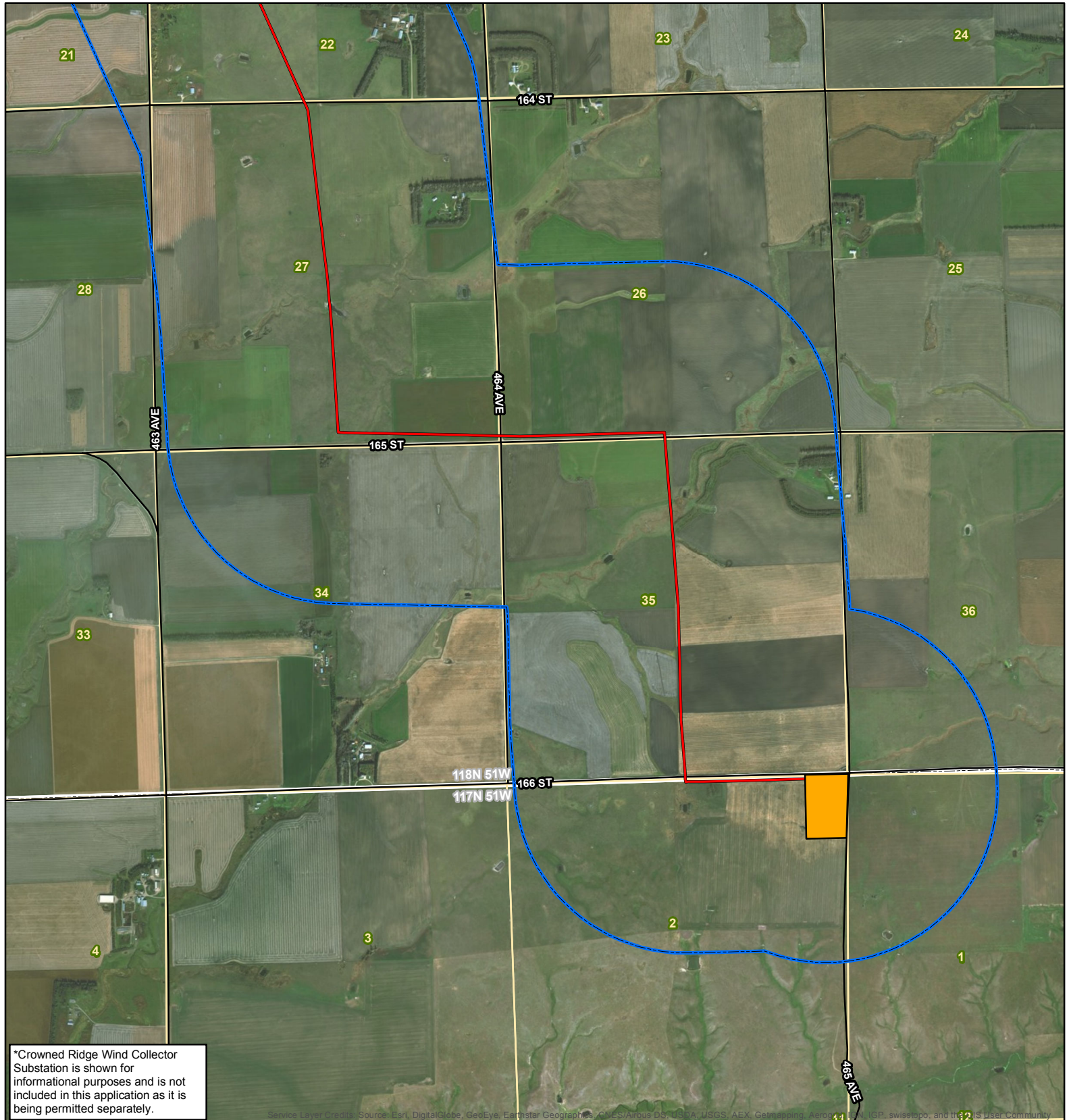
Base Map: 2016 Aerial Imagery
Source: USDA/FSA - Aerial Photography Field Office
Quadrangle: South Shore (1973)

Township/Range: T. 118N, R. 51W

Codington County, North Dakota

Projection: NAD 1983 UTM Zone 14N





Crowned Ridge II Transmission Line

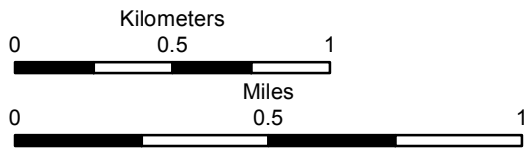
- Proposed Transmission Line
- Project Study Area (1 mile)
- *Crowned Ridge Wind Collector Substation
- Crowned Ridge Wind II Collector Substation
- Section Boundary
- Township/Range Boundary



116 North 4th Street
Suite 200
Bismarck, ND 58501

Phone: 701.258.6622
Fax: 701.258.5957

www.swca.com



Base Map: 2016 Aerial Imagery
Source: USDA/FSA - Aerial Photography Field Office
Quadrangle: South Shore (1973),
Kranzburg (1970)
Township/Range: T. 118N, R. 51W &
T. 117N, R. 51W
Codington County, North Dakota

Projection: NAD 1983 UTM Zone 14N

