

\*Crowned Ridge Wind Collector Substation is shown for informational purposes and is not included in this application as it is being permitted separately.

Land Cover	
	Cultivated Crops
	Deciduous Forest
	Developed, High Intensity
	Developed, Low Intensity
	Developed, Medium Intensity
	Developed, Open Space
	Emergent Herbaceous Wetlands
	Hay/Pasture
	Herbaceous
	Open Water

### Crowned Ridge II Transmission Line

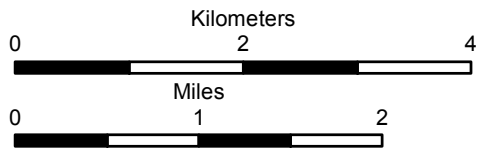
- City
- Proposed Transmission Line
- Electrical Line
- Railroad
- Project Study Area (1 mile)
- \*Crowned Ridge Wind Collector Substation
- Crowned Ridge Wind II Collector Substation
- County Boundary



116 North 4th Street  
Suite 200  
Bismarck, ND 58501

Phone: 701.258.6622  
Fax: 701.258.5957

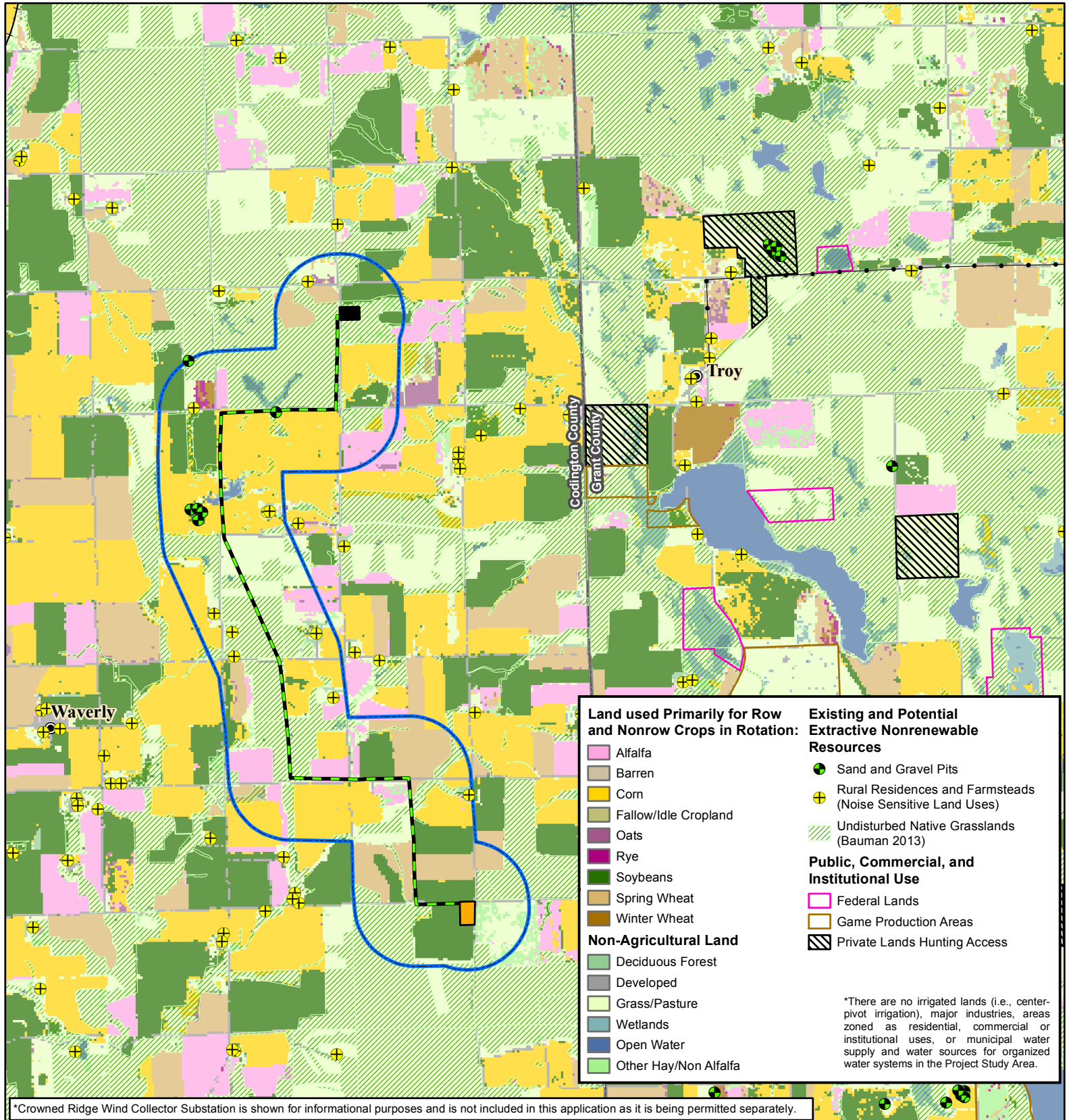
[www.swca.com](http://www.swca.com)



Base Map: National Land Cover Dataset  
Source: U.S. Geological Survey, 20141010, NLCD 2011 Land Cover (2011 Edition, amended 2014), 3 x 3 Degree: NLCD2011\_LC\_N45W096: U.S. Geological Survey.  
Codrington County, South Dakota

Projection: NAD 1983 UTM Zone 14N





## Crowned Ridge II Transmission Line

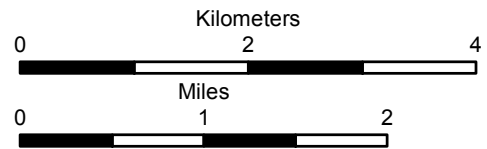
- City
- Proposed Transmission Line
- Electrical Line
- Railroad
- Project Study Area (1 mile)
- \*Crowned Ridge Wind Collector Substation
- Crowned Ridge Wind II Collector Substation
- County Boundary

**SWCA**  
ENVIRONMENTAL CONSULTANTS

116 North 4th Street  
Suite 200  
Bismarck, ND 58501

Phone: 701.258.6622  
Fax: 701.258.5957

www.swca.com



Base Map: 2017 South Dakota Cropland Data Layer | NASS/USDA  
Source: United States Department of Agriculture (USDA), National Agricultural Statistics Service (NASS), Research and Development Division (RDD), Geospatial Information Branch (GIB), Spatial Analysis Research Section (SARS); 2017 Edition Codington County, South Dakota

Projection: NAD 1983 UTM Zone 14N

