






NO		REVISION		ZONE	DATE	BY	CHK	ENG	NO	REVISION		ZONE	DATE	BY	CHK	ENG	REFERENCE DRAWINGS				<div><div><div><div></div><div>NORTHERN STATES POWER COMPANY</div><div>Dakota Range I & II Wind Farm</div><div>CODDINGTON AND GRANT COUNTY, SD</div></div></div><div><div>THIS MAP/DOCUMENT IS A TOOL TO ASSIST EMPLOYEES IN THE PERFORMANCE OF THEIR JOBS. YOUR PERSONAL SAFETY IS PROVIDED FOR BY USING SAFETY PRACTICES, PROCEDURES, AND EQUIPMENT AS DESCRIBED IN THE SAFETY TRAINING PROGRAMS AND MANUALS.</div><div>ENERGY SUPPLY</div><div>ENGINEERING & CONSTRUCTION</div></div></div> <div>UNIT 0</div> <div>Civil Access Road</div> <div>Setback Map Book</div>	REV	
0	RECORD SETBACK MAP BOOK		04/22/22	ZHW	DFK	DFK											DWG NO.	MANUFACTURER	DESCRIPTION				




NO		REVISION		ZONE	DATE	BY	CHK	ENG	NO	REVISION		ZONE	DATE	BY	CHK	ENG	REFERENCE DRAWINGS				<div><div><div><div><div><div>NORTHERN STATES POWER COMPANY</div><div>Dakota Range I & II Wind Farm</div><div>CODDINGTON AND GRANT COUNTY, SD</div></div></div><div><div>THIS MAP/DRAWING IS A TOOL TO ASSIST EMPLOYEES IN THE PERFORMANCE OF THEIR JOBS. YOUR PERSONAL SAFETY IS PROVIDED FOR BY USING SAFETY PRACTICES, PROCEDURES, AND EQUIPMENT AS DESCRIBED IN THE SAFETY TRAINING PROGRAMS AND MANUALS.</div></div></div></div></div> <div>UNIT 0</div> <div>Civil Access Road</div> <div>Setback Map Book</div>	REV			
0	RECORD SETBACK MAP BOOK		04/22/22	ZHW	DFK	DFK											DWG NO.	MANUFACTURER	DESCRIPTION						
																		DWN: ZHW	DATE: 04-22-22	CHK: DFK	DATE: 04-22-22	ENERGY SUPPLY		NH-277478-14-2	0
																		ENG: DFK	DATE: 04-22-22	CHK: DFK	DATE: 04-22-22	ENGINEERING & CONSTRUCTION			
																		PM: DFK	DATE: 04-22-22	PROJ. NO: 22717					
																		APVD: RSC	DATE: 04-22-22	SCALE: 1" = 600'-0"					

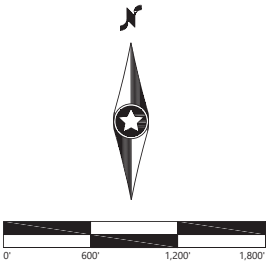
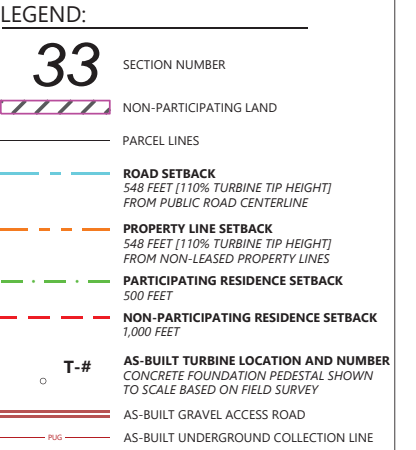


NO		REVISION		ZONE	DATE	BY	CHK	ENG	NO	REVISION		ZONE	DATE	BY	CHK	ENG	REFERENCE DRAWINGS				<div><div></div><div>NORTHERN STATES POWER COMPANY Dakota Range I & II Wind Farm CODDINGTON AND GRANT COUNTY, SD</div></div>	<div>THIS MAP/DRAWING IS A TOOL TO ASSIST EMPLOYEES IN THE PERFORMANCE OF THEIR JOBS. YOUR PERSONAL SAFETY IS PROVIDED FOR BY USING SAFETY PRACTICES, PROCEDURES, AND EQUIPMENT AS DESCRIBED IN THE SAFETY TRAINING PROGRAMS AND MANUALS.</div>				UNIT 0 Civil Access Road Setback Map Book	
0	RECORD SETBACK MAP BOOK		04/22/22	ZHW	DFK	DFK											DWG NO.	MANUFACTURER	DESCRIPTION	DWN: ZHW ENG: DFK PM: DFK APVD: RSC		DATE: 04-22-22	CHK: DFK	DATE: 04-22-22	ENERGY SUPPLY ENGINEERING & CONSTRUCTION	NH-277478-14-3	REV 0



NO		REVISION		ZONE	DATE	BY	CHK	ENG	NO	REVISION		ZONE	DATE	BY	CHK	ENG	REFERENCE DRAWINGS				<div><div><div><div></div><div>NORTHERN STATES POWER COMPANY</div><div>Dakota Range I & II Wind Farm</div><div>CODDINGTON AND GRANT COUNTY, SD</div></div></div><div><div><div>THIS MAP/DOCUMENT IS A TOOL TO ASSIST EMPLOYEES IN THE PERFORMANCE OF THEIR JOBS. YOUR PERSONAL SAFETY IS PROVIDED FOR BY USING SAFETY PRACTICES, PROCEDURES, AND EQUIPMENT AS DESCRIBED IN THE SAFETY TRAINING PROGRAMS AND MANUALS.</div><div>ENERGY SUPPLY</div><div>ENGINEERING & CONSTRUCTION</div></div></div></div>	UNIT 0		REV
0	RECORD SETBACK MAP BOOK		04/22/22	ZHW	DFK	DFK										DWG NO.	MANUFACTURER	DESCRIPTION	Civil Access Road	Setback Map Book				





Westwood

Phone (952) 937-5150 12701 Whitewater Drive, Suite #300
Fax (952) 937-5822 Minnetonka, MN 55343
Toll Free (888) 937-5150 westwoodps.com

Westwood Professional Services, Inc.

THIS MAP/DOCUMENT IS A TOOL
TO ASSIST EMPLOYEES IN THE
PERFORMANCE OF THEIR JOBS.
YOUR PERSONAL SAFETY IS
PROVIDED FOR BY USING
SAFETY PRACTICES,
PROCEDURES, AND EQUIPMENT
AS DESCRIBED IN THE SAFETY
TRAINING PROGRAMS AND
MANUALS.

UNIT 0

Civil Access Road Setback Map Book

NH-277478-14-6

10

[illegible]

Xcel Energy®

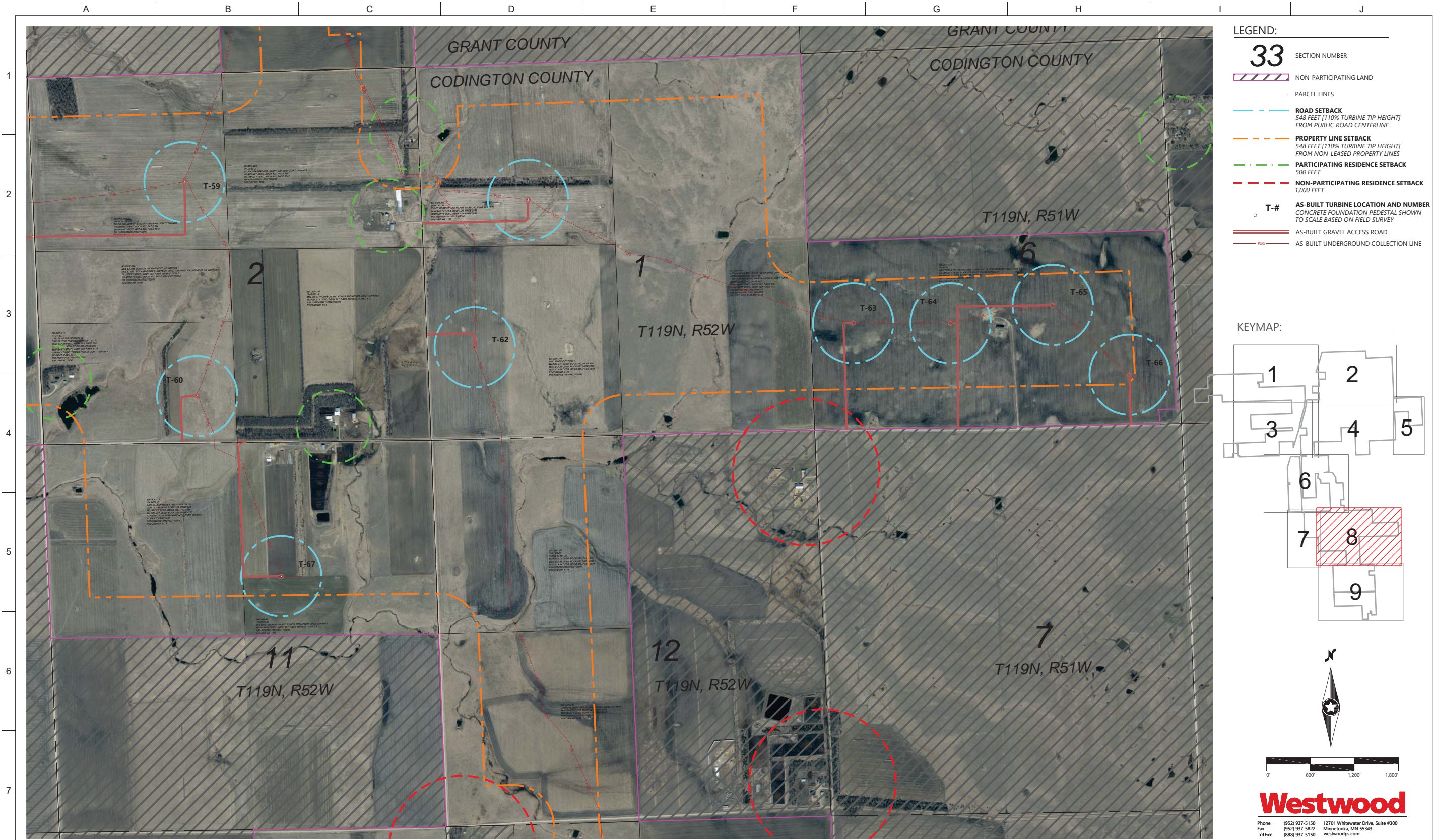
NORTHERN STATES POWER COMPANY
Dakota Range I & II Wind Farm
 CODDINGTON AND GRANT COUNTY, SD


DWN: ZHW	DATE: 04-22-22	CHK: DFK	DATE: 04-22-22
ENG: DFK	DATE: 04-22-22	CHK: DFK	DATE: 04-22-22
PM: DFK	DATE: 04-22-22	PROJ. NO:	22717
APVD: RSC	DATE: 04-22-22	SCALE: 1" =	600'-0"

THIS MAP/DOCUMENT IS A TOOL
TO ASSIST EMPLOYEES IN THE
PERFORMANCE OF THEIR JOBS.
YOUR PERSONAL SAFETY IS
PROVIDED FOR BY USING
SAFETY PRACTICES,
PROCEDURES, AND EQUIPMENT
AS DESCRIBED IN THE SAFETY
TRAINING PROGRAMS AND
MANUALS.

ENERGY SUPPLY
ENGINEERING & CONSTRUCTION





NO		REVISION		ZONE	DATE	BY	CHK	ENG	NO	REVISION		ZONE	DATE	BY	CHK	ENG	REFERENCE DRAWINGS				<div><div></div><div>NORTHERN STATES POWER COMPANY Dakota Range I & II Wind Farm CODDINGTON AND GRANT COUNTY, SD</div></div>	<div>THIS MAP/DRAWING IS A TOOL TO ASSIST EMPLOYEES IN THE PERFORMANCE OF THEIR JOBS. YOUR PERSONAL SAFETY IS PROVIDED FOR BY USING SAFETY PRACTICES, PROCEDURES, AND EQUIPMENT AS DESCRIBED IN THE SAFETY TRAINING PROGRAMS AND MANUALS.</div>	UNIT 0 Civil Access Road Setback Map Book		
0	RECORD SETBACK MAP BOOK			04/22/22	ZHW	DFK	DFK										DWG NO.	MANUFACTURER	DESCRIPTION	<div><div>DWN: ZHW</div><div>ENG: DFK</div><div>PM: DFK</div><div>APVD: RSC</div></div>			<div>DATE: 04-22-22</div>	<div>CHK: DFK</div>	<div>DATE: 04-22-22</div>
																			<div>DATE: 04-22-22</div>				<div>DATE: 04-22-22</div>		
																			<div>DATE: 04-22-22</div>				<div>DATE: 04-22-22</div>		
																			<div>DATE: 04-22-22</div>				<div>DATE: 04-22-22</div>		
																					<div>PROJ. NO: 22717</div>	<div>SCALE: 1" = 600'-0"</div>			
																					ENERGY SUPPLY ENGINEERING & CONSTRUCTION	NH-277478-14-8	REV 0		



NO		REVISION		ZONE	DATE	BY	CHK	ENG	NO	REVISION		ZONE	DATE	BY	CHK	ENG	REFERENCE DRAWINGS				<div><div><div><div></div></div><div>Xcel Energy®</div></div><div>NORTHERN STATES POWER COMPANY</div><div>Dakota Range I & II Wind Farm</div><div>CODDINGTON AND GRANT COUNTY, SD</div></div>	<div>THIS MAP/DRAWING IS A TOOL TO ASSIST EMPLOYEES IN THE PERFORMANCE OF THEIR JOBS. YOUR PERSONAL SAFETY IS PROVIDED FOR BY USING SAFETY PRACTICES, PROCEDURES, AND EQUIPMENT AS DESCRIBED IN THE SAFETY TRAINING PROGRAMS AND MANUALS.</div>	UNIT 0	
0	RECORD SETBACK MAP BOOK			04/22/22	ZHW	DFK	DFK										DWG NO.	MANUFACTURER	DESCRIPTION	Civil Access Road				
																				Setback Map Book				