

Figure 1 - Homan Field Location and Layout

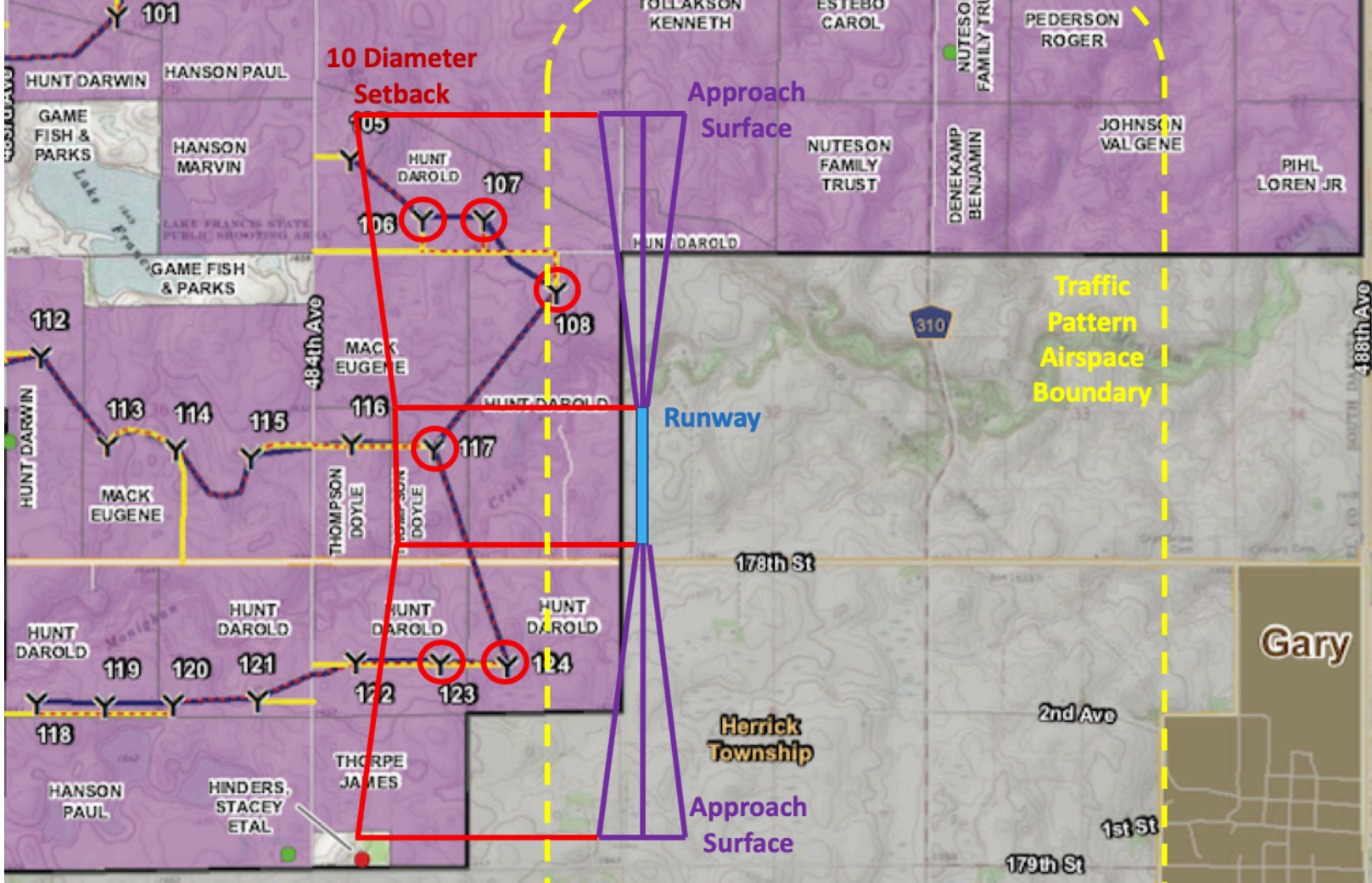
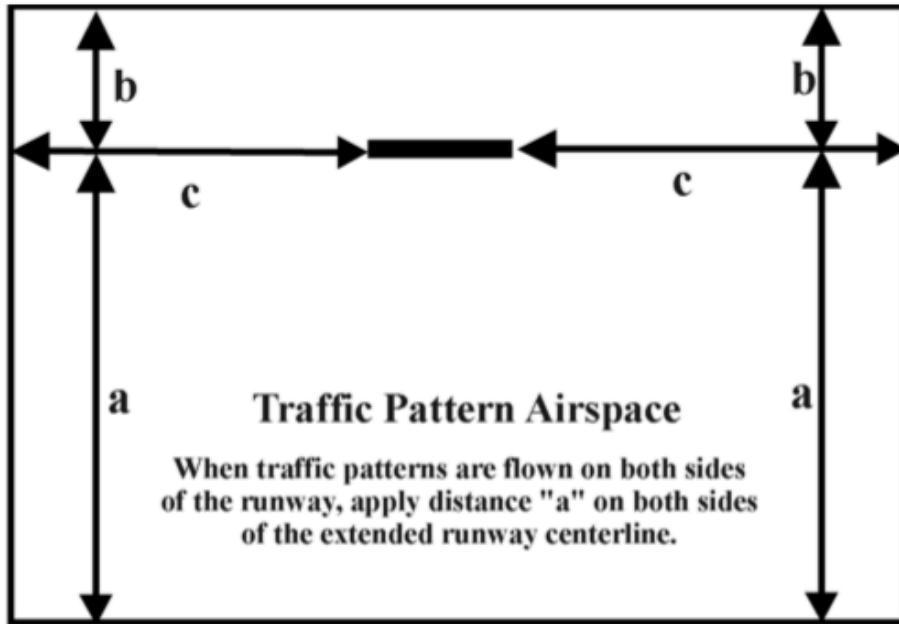


Figure 2 - Homan Field Airspace and Recommended Setbacks Relative to Project Layout

FIG 6-3-9  
TRAFFIC PATTERN AIRSPACE



Aircraft Category	Distance (nautical miles)			
	a	b	c	d*
A	1.25	.25	1.25	.375
B	1.5	.25	1.5	.5
C	2.25	.5	2.25	.875
D	4.0	.5	3.0	1.0

\*Increase distance "C" by adding distance specified in "d" for each aircraft over four (of the same category) anticipated to be operating in the traffic pattern at the same time.

Figure 3 - Traffic Pattern Airspace Dimensioning from US DOT JO 7400.2M

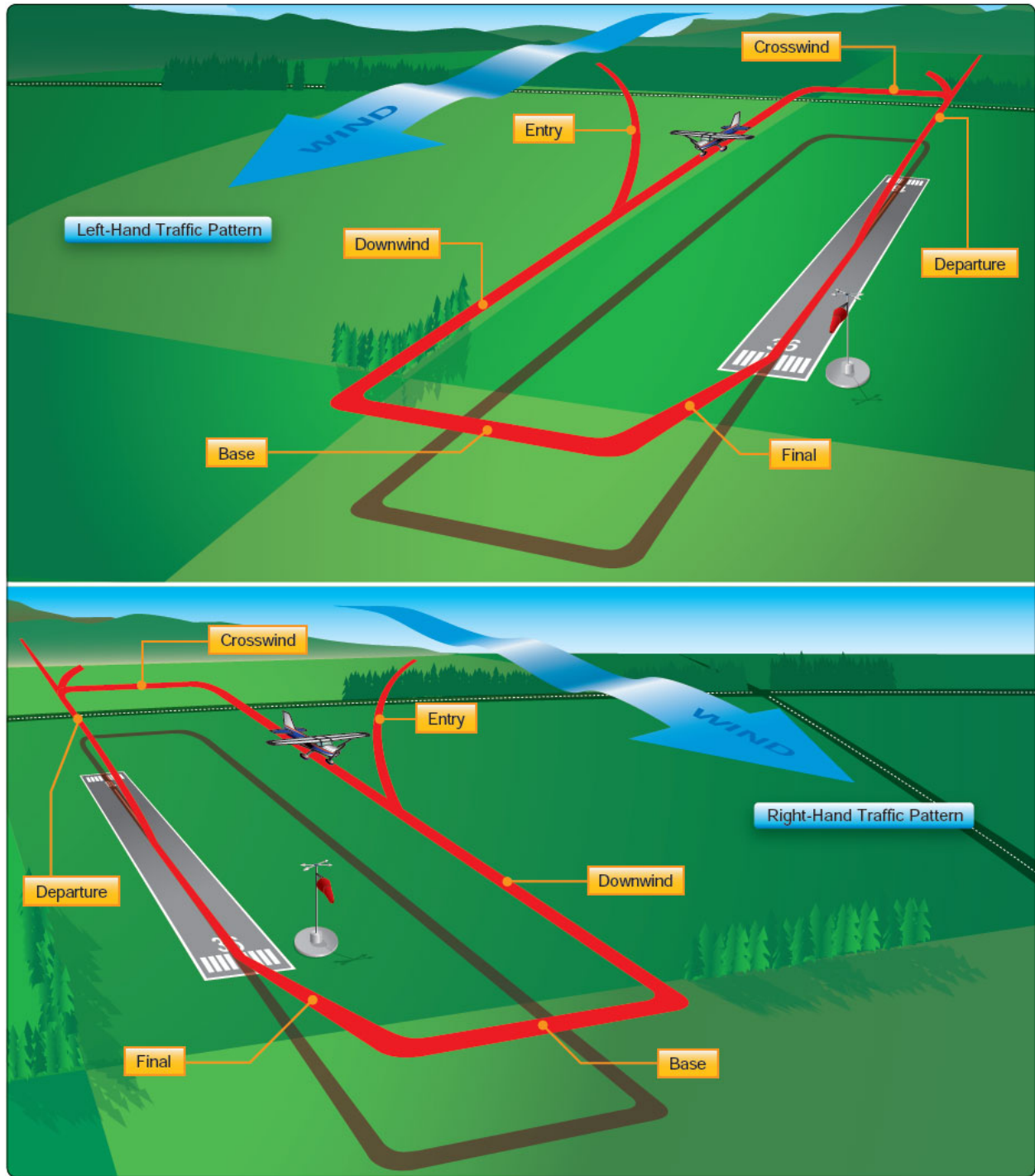


Figure 4 - Airport Traffic Patterns ([www.flightliteracy.com](http://www.flightliteracy.com))

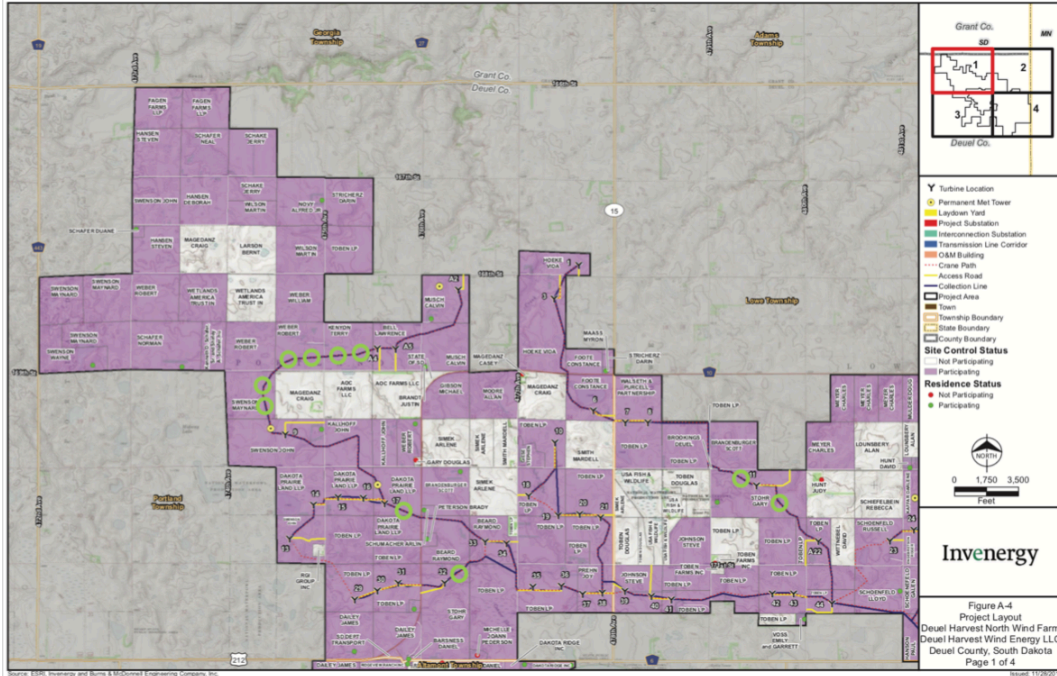


Figure 5 - Deuel Harvest Project Layout with Alternate Sites Identified (1 of 4)

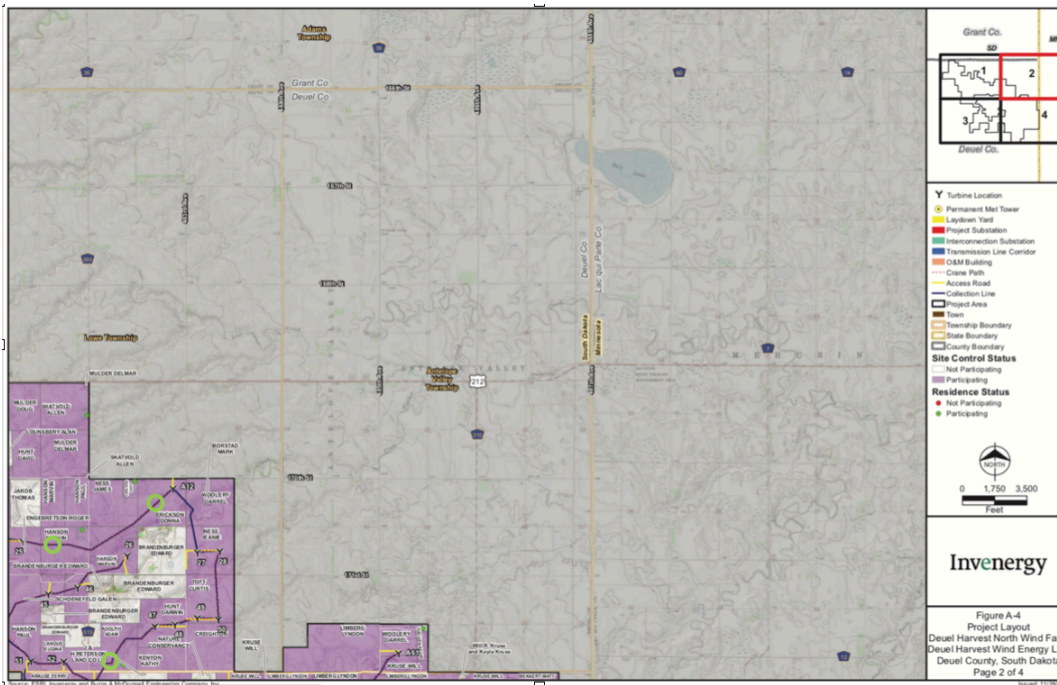


Figure 6 - Deuel Harvest Project Layout with Alternate Sites Identified (2 of 4)

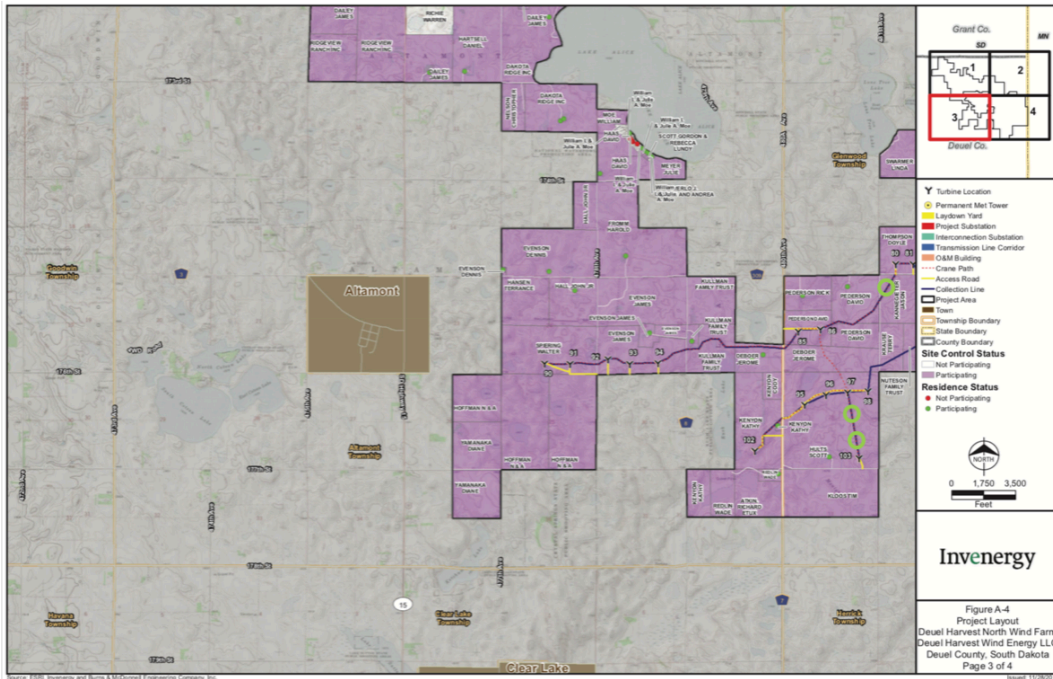


Figure 7 - Deuel Harvest Project Layout with Alternate Sites Identified (3 of 4)

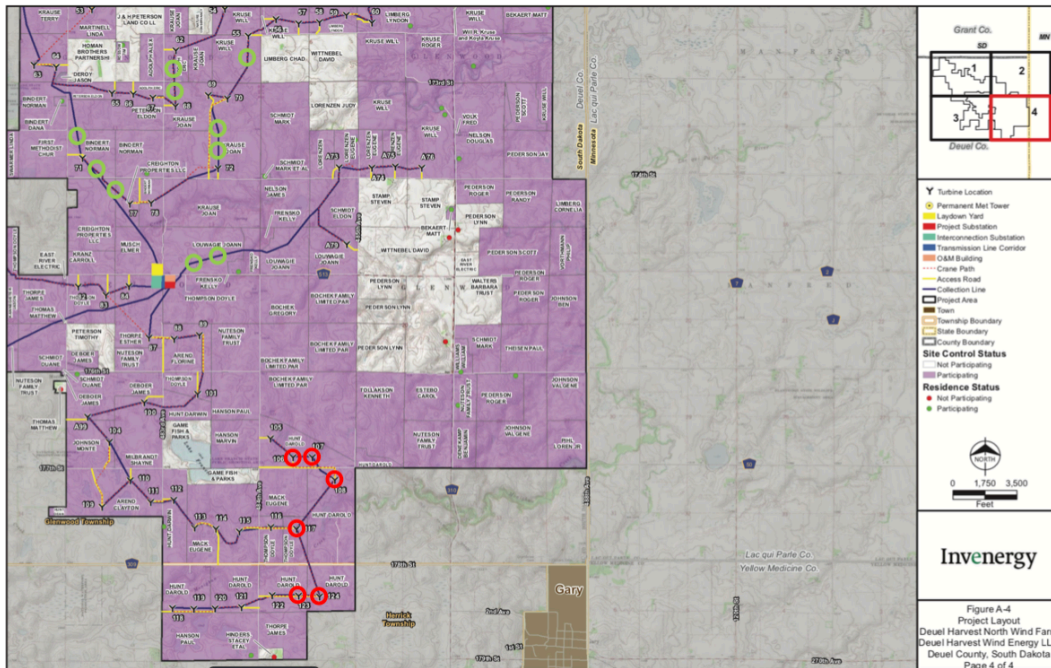


Figure 8 - Deuel Harvest Project Layout with Alternate Sites Identified (4 of 4)