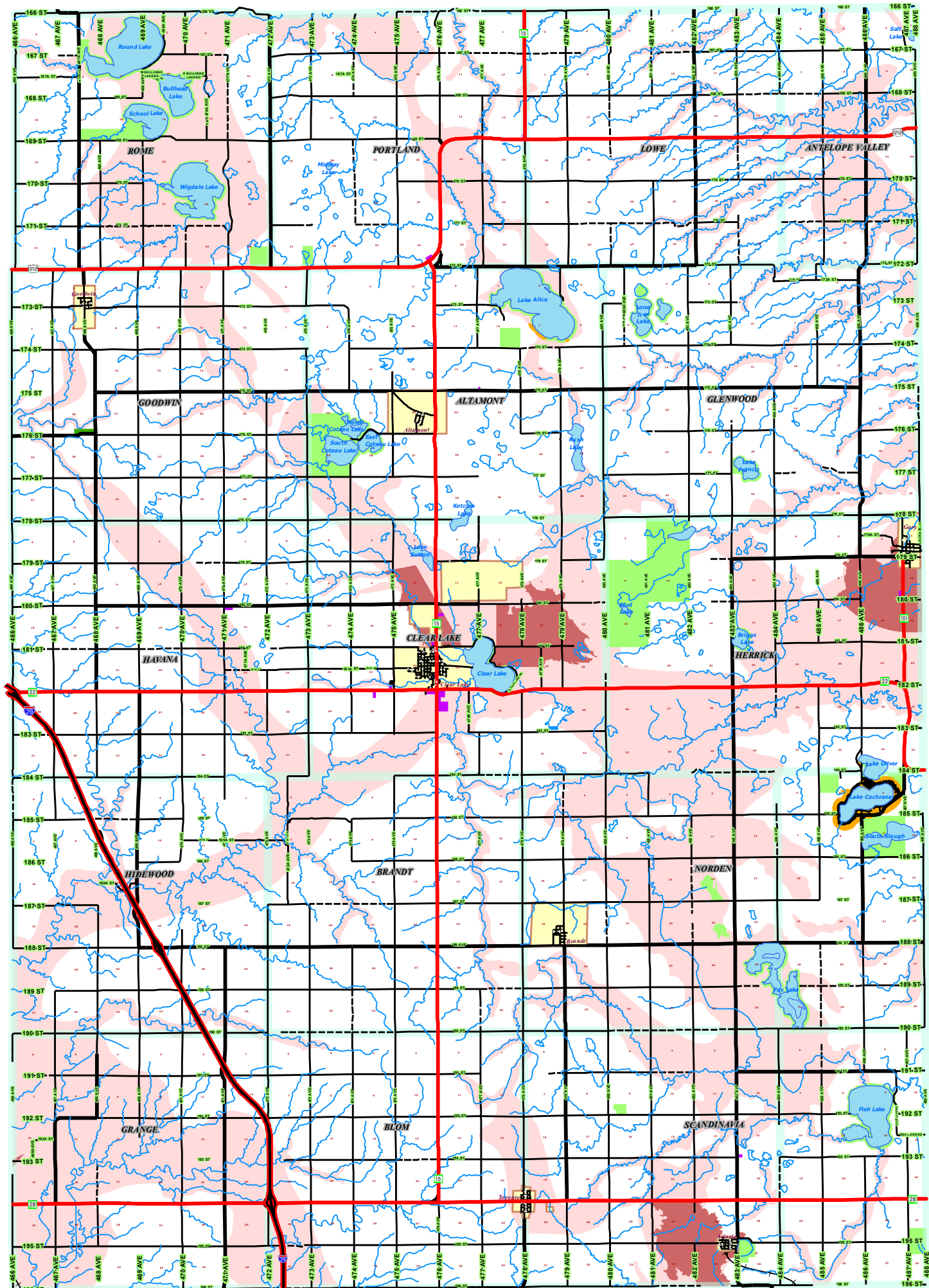


Deuel County 2012 Official Zoning Map



- E822.5' of the W1072.5' of the N525.5', NW1/4, 13115-50
- N612' of the S1100' of the E645', SE1/4, 9115-47
- W62' from 129 right-of-way, SW 1/4, 30113-49
- East 62' from the 129 right-of-way, SW 1/4, 30113-49
- Lot 1 and Lot 8, West Side Acres Addition, SE 1/4, 21115-49
- Five acres of the NW 1/4, W 1/2, NW 1/4, 14115-49
- S633.28' of the East 610' of the SE 1/4 SE 1/4, 18115-49
- W 1320' of the South 1274' of the SW 1/4 NW 1/4 and the West 454.5' of the South 548' of the north 1366', of the NW 1/4, 26115-49
- Block 1 through Block 5, NW 1/4 of the NW 1/4, 26115-49
- 1 acre SE 1/4 NE 1/4, along highway 15, 27115-49
- Outlot A, D and C, less S293.6' of E 34' in the NE 1/4 NE 1/4, 27115-49
- Outlot B, and S293.6' of the E34' of lot C, NE 1/4, 27115-49
- S495' of the W440', SE 1/4, 32117-50
- W 62' from 129, SE 1/4, 24113-50
- E 62' from 129, SW 1/4 less E 61 rods, & S 13 Rods, 19113-49
- E 62' from 129 S 1/2 NW 1/4 & NE 1/4 NW 1/4, 19113-49
- W 42.5' rods and the E 61 rods, SW 1/4, 30113-49
- 1.9 acres in the SW 1/4 SW 1/4 1423-113-49
- Outlot 1, NW 1/4, 30113-49
- W 1/2 NW 1/4 less H 1, 26113-49
- Land North & West of curve on highway 212, SE 1/4, 34117-49
- Lot 1 of SE 1/4, SE 1/4 14117-49
- E 125 NE 1/4 SE 1/4 SE 1/4, 12117-49
- 62' East of 129, NW 1/4, 30113-49
- S 388' of the W 1/2 of SW 1/4 of section 13-113-48
- Plat of Block 1 Land on Addition N 1/2 of section 25113-49
- Block 1 Farm & Ranch Addition in NW 1/4 of NE 1/4 section 23115-49
- W 200' of the S300' of W 1/2 SW 1/4 of section 23115-47

0 1 2 3  
Miles

**Legend**

- Incorporated Municipality
- AP-Aquifer Protection Overlay - Zone A
- AP-Aquifer Protection Overlay - Zone B
- CI-Commercial Industrial District
- A-Agricultural District
- NR-Natural Resource District
- TD-Town District
- LP-Lake Park District
- Lake
- Stream
- Highway/Interstate
- Hard Surface
- Gravel
- Low Maintenance
- Railroad

**Amendments**

1.	3.
2.	4.

This is to certify that this is the Official Zoning Map referred to in Section 302 of Ordinance B2004-01. This Official Zoning Map supercedes and replaces the Official Zoning Map adopted July 6, 2004 for Deuel County, South Dakota.

Chairperson, Deuel County Board of Commissioners Date

County Auditor Date