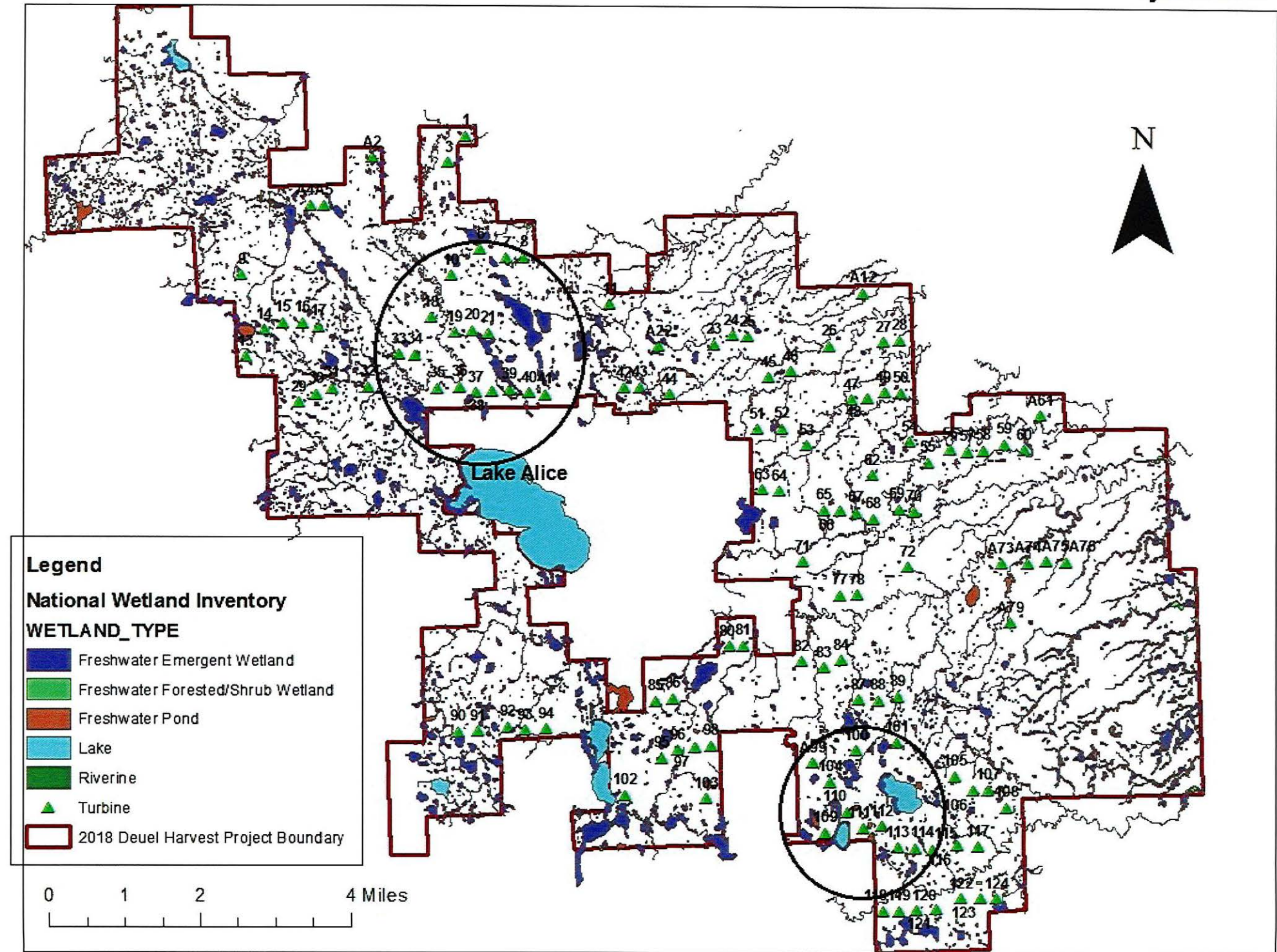


Locations of Turbines at Deuel Harvest in Relation to Wetlands

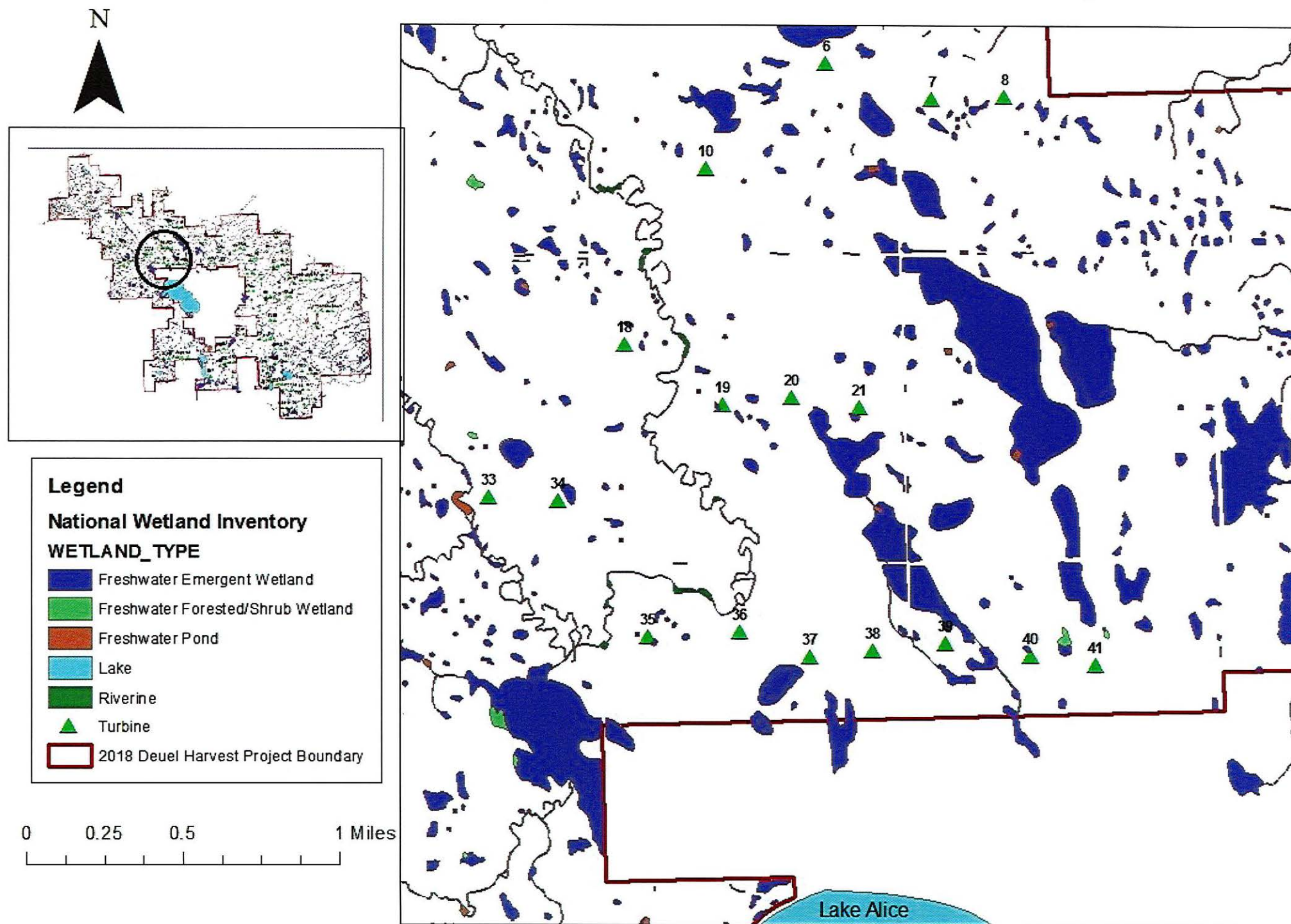
As requested by Commissioner Hanson, we (SDGFP) have created three maps of wetland locations and wind turbine locations within the Deuel Harvest project area. We used the 2019 National Wetland Inventory data available from the US Fish and Wildlife Service. From a visual inspection of the project lay out, we have identified two general areas in Map 1 that may be areas of higher wetland concentrations. As described in Tom Kirschenmann's pre-filed testimony, and as discussed in testimony on 4/16/19, it will be difficult to completely avoid siting turbines in areas with high wetland densities in this part of South Dakota. Map 2 is zoomed in to the northern most area identified (north of Lake Alice), to illustrate the location of turbines in relation to wetlands. Map 3 is zoomed in to the southern most area identified, to illustrate the location of turbines as related to wetlands.



Map Number 1: National Wetland Inventory and Turbine Locations in Deuel Harvest Project Area



Map Number 2: Turbine Locations North of Lake Alice in Deuel Harvest Project Area



Map Number 3: Turbine Locations in South West Portion of Deuel Harvest Project Area

