

# ROAD USE AND REPAIR AGREEMENT

APPENDIX E – REV 2, 03/05/2019

## FORM OF APPLICATION TO ERECT POLES AND WIRES AND TO BURY CABLE FOR ELECTRICITY (“UTILITY FACILITIES”) IN AND ALONG PUBLIC HIGHWAYS (“UTILITY PERMIT”)

To Auditor and Board of County Commissioners of Hutchinson County, SD.

Applicant: Prevailing Wind Park, LLC

Project description (including location): 218 MW Windfarm w/ WTGs in Hutchinson, Charles Mix and Bon Homme counties -only buried lines will be used in Hutchinson County, and a Generation Tie Line running from Bon Homme County (intersection of 296<sup>th</sup> St and 406<sup>th</sup> Ave) into Yankton County , terminating at the Utica Junction substation North of Lesterville (just N of the 299<sup>th</sup> street & 431<sup>st</sup> ave intersection).

Application date: 03/05/2019

Start date: Q2 2019 Completion Date: December, 2019

Proposed electrical connection points (description or map) The underground cable will connect each wind turbine and pass out of the county underneath 291<sup>st</sup> St.

Route over which the applicant desires to construct lines or bury underground cable (description or map): See attached Hutchinson County map – underground lines only

Existing electric, telegraph, and telephone lines occupying public highways which the proposed electrical poles, wires or cables will occupy (description or map): NA - This will be all new construction

Size and type of electrical poles, wires or cables being installed: 34.5kV buried lines

Method of installation: trench or plow

Depth of cover for buried facilities: Minimum 48” cover

Distance of aboveground lines from roadway centerline: NA

Certificate of Public Convenience and Necessity (if any): Not applicable.

All underground lines through roads will be bored.

Warning signs shall be installed where appropriate.

All work shall comply with all State and Federal codes.

County assumes no responsibility for damages to the applicant's property occasioned by any construction or maintenance operations on said highway subsequent to the building of said Utility Facilities.

Prevailing Wind Park shall take all precautions during the construction or maintenance of electric lines to protect and safeguard the lives and property of traveling public and adjacent property owners and shall hold the county harmless from any damage or losses that may be sustained by the traveling public or adjacent property owners of such construction projects.

A map of locations of proposed Utility Facilities must be submitted with application.

Issuance of a Utility Permit pursuant to this application authorizes Prevailing Wind Park, LLC or its designee to construct the Utility Facilities in the identified public highways.

Issuance of a Utility Permit pursuant to this application authorizes Prevailing Wind Park, LLC or its contractor to perform maintenance and repair of the Utility Facilities in the public highways after installation.

Submitted by:

Scott Creech

(Name)

sPower Construction Manager

(Title)

2180 S 1300 E

(Address)

Salt Lake City, UT 84106

(City, State, Zip Code)

Recommended for Approval:

By

Joel Barnum

(Highway Superintendent)

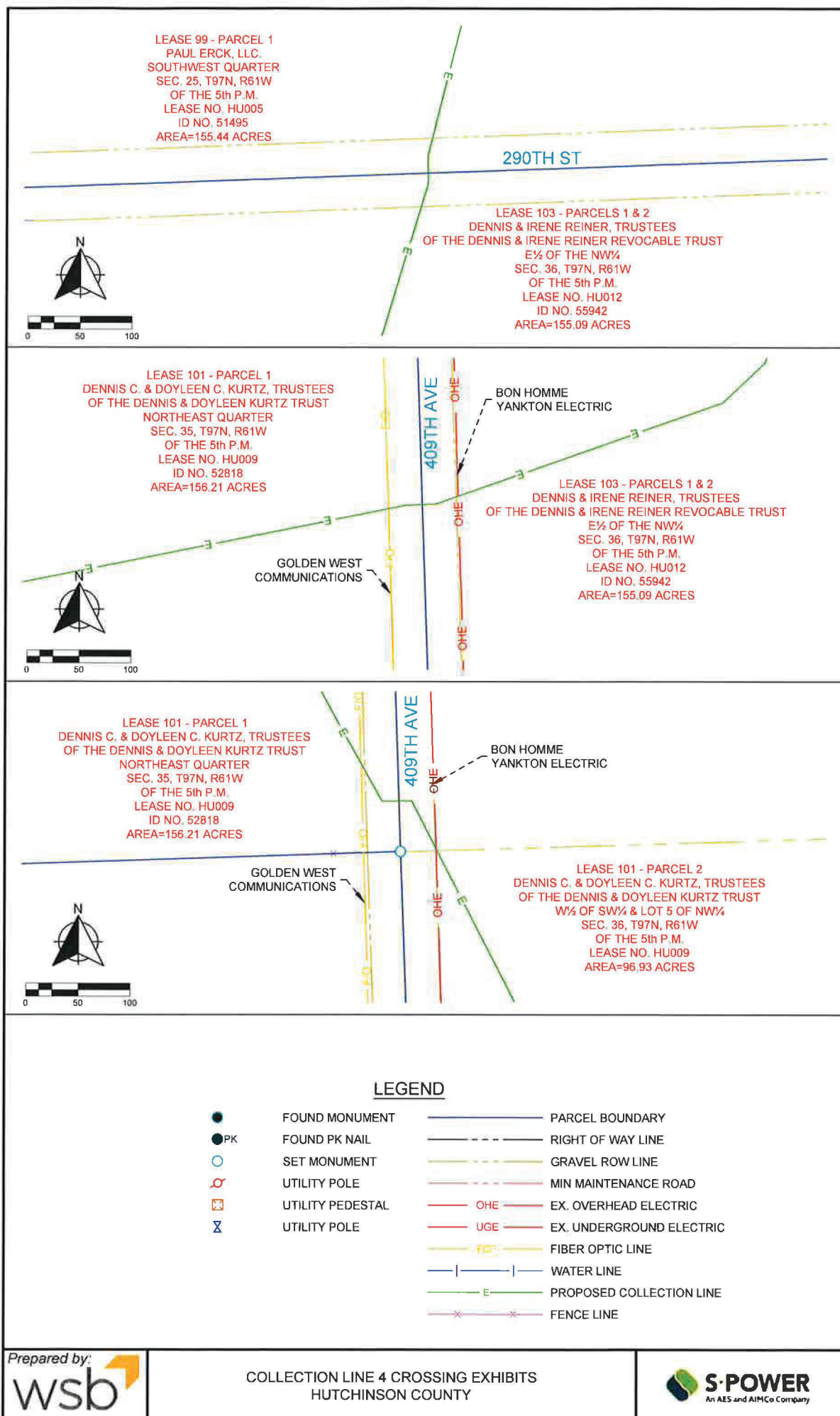
Approved:

(Date)

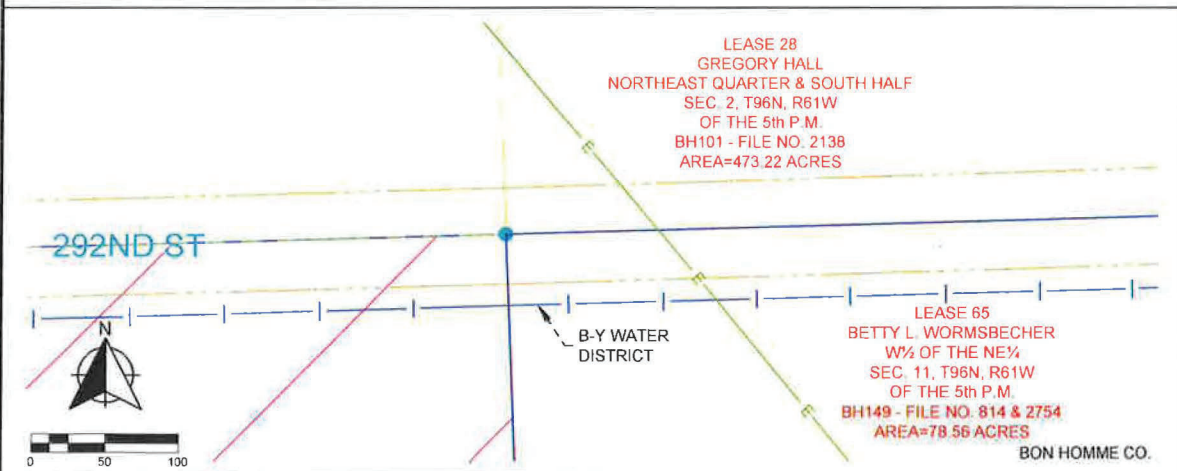
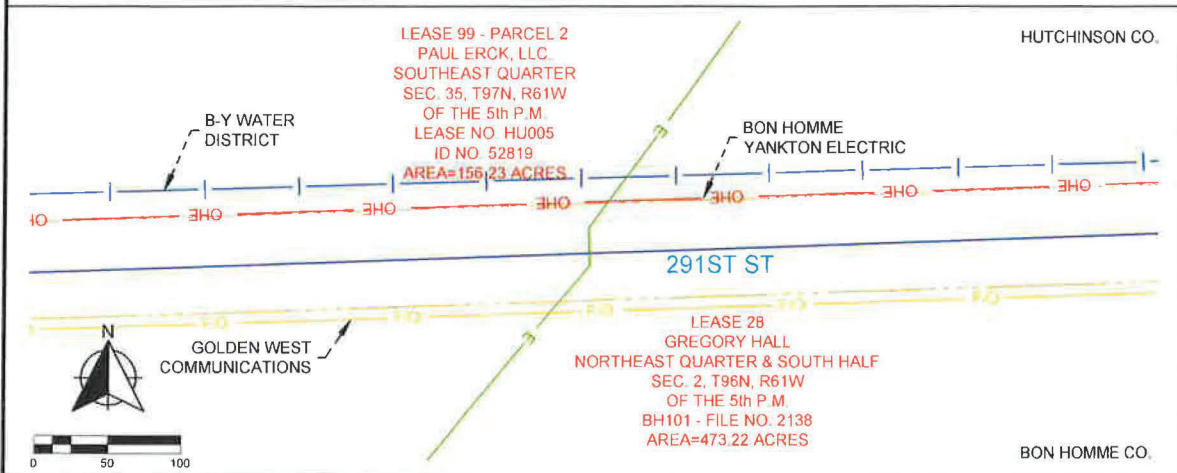
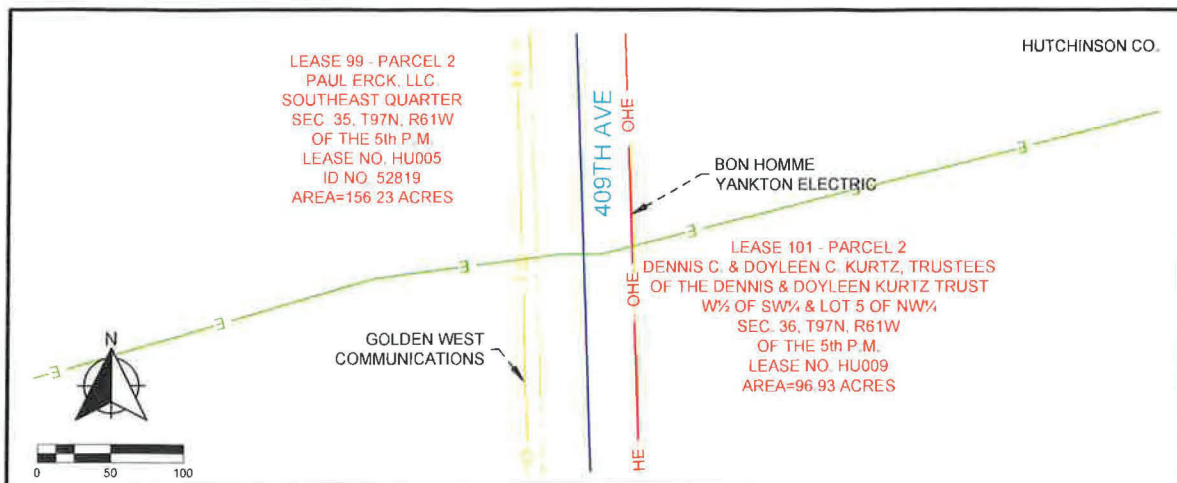
By:

Steve Farnsworth

Chairman, Board of County  
Commissioners







### LEGEND

●	FOUND MONUMENT	—	PARCEL BOUNDARY
●PK	FOUND PK NAIL	---	RIGHT OF WAY LINE
○	SET MONUMENT	---	GRAVEL ROW LINE
⊕	UTILITY POLE	---	MIN MAINTENANCE ROAD
⊕	UTILITY PEDESTAL	— OHE —	EX. OVERHEAD ELECTRIC
⊕	UTILITY POLE	— UGE —	EX. UNDERGROUND ELECTRIC
		— FOL —	FIBER OPTIC LINE
		—	WATER LINE
		—	PROPOSED COLLECTION LINE
		—	FENCE LINE

# PWP Site Layout

Hutchinson County Turbines and Collector Lines

Legend

410th Ave

Tripp

55

56

30

25

51

411th Ave  
37

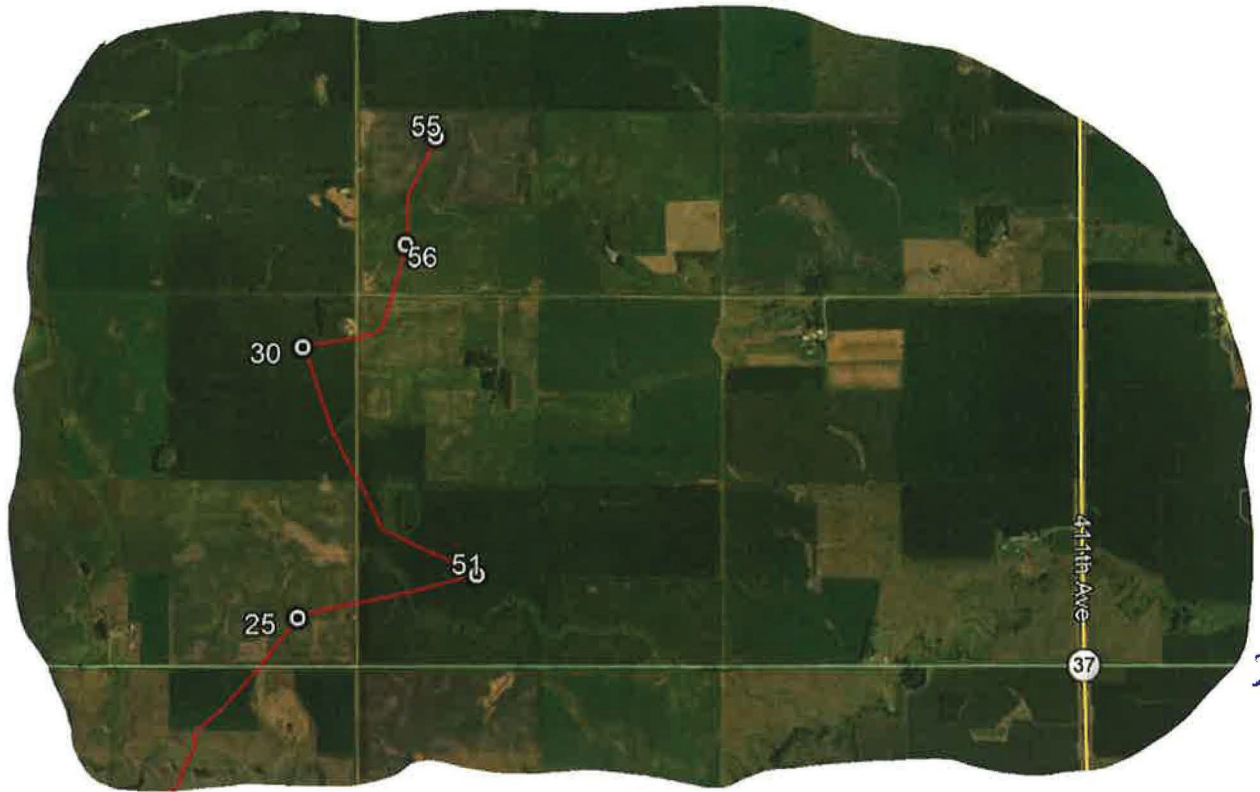
Google Earth

© 2018 Google



2 mi





291<sup>st</sup> St.

# Hutchinson County Auditor

Diane Murtha

140 Euclid St Room 128

Olivet SD 57052

605-387-4212 auditor@gwte.net

February 19, 2019

COPY

Attention:

The Hutchinson County Commission will hold a public meeting during their regular scheduled Commissioner meeting on March 5, 2019, at 9:30 am at the Hutchinson County Courthouse, 140 Euclid St, Commissioners Room, Olivet SD, to discuss Prevailing Wind Park, LLC's applications for utility permits under SDCL 31-26-1. You are receiving this notice because you are a public entity having jurisdiction and supervision over the involved highway or because you own or operate electric, telephone, or telegraph lines or underground cable on any part of the highway which the proposed lines may occupy. An overview map is enclosed. For a complete copy of Prevailing Wind Park, LLC's applications, contact Scott Creech at (325) 207-9064.



Diane Murtha  
Hutchinson County Auditor