

**BEFORE THE PUBLIC UTILITIES COMMISSION
OF THE STATE OF SOUTH DAKOTA**

**IN THE MATTER OF THE
APPLICATION BY DAKOTA RANGE
I, LLC AND DAKOTA RANGE II, LLC
FOR A PERMIT OF A WIND ENERGY
FACILITY IN GRANT COUNTY AND
CODINGTON COUNTY, SOUTH
DAKOTA, FOR THE DAKOTA RANGE
WIND PROJECT**

*
*
*
*
*
*
*
*

**APPLICANTS' RESPONSES TO
INTERVENOR TERESA KAAZ'S
DATA REQUESTS**

EL18-003

Below, please find Applicants' responses to Intervenor Teresa Kaaz's Data Requests.

1-1) Distance to Ms. Kaaz's property from each turbine.

Dakota Range: The attached map (Dakota Range: Teresa Kaaz Turbine Proximity) shows the distance of the four turbines in closest proximity to Ms. Kaaz's property line.

1-2) Distance to Ms. Kaaz's home from each turbine.

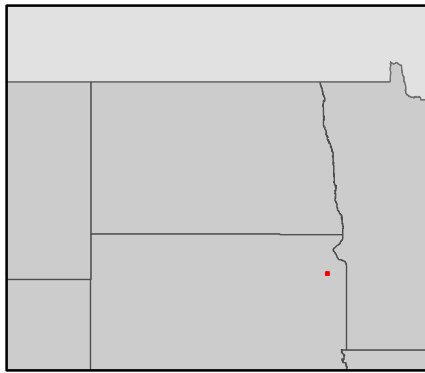
Brenna Gunderson: The attached map (Dakota Range: Teresa Kaaz Turbine Proximity) shows the distance of the four turbines in closest proximity to Ms. Kaaz's residence.

1-3) Elevation of each turbine hub height.





Brenna Gunderson: The attached map (Dakota Range Turbine Elevations) shows the elevation of each turbine in the Project.

Dated this 30th day of May 2018.

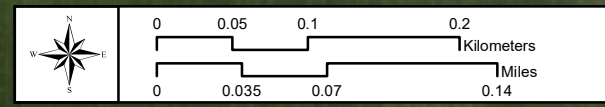
By /s/ Mollie M. Smith
Mollie M. Smith
Lisa A. Agrimonti
FREDRIKSON & BYRON, P.A.
Attorneys for Applicants
200 South Sixth Street, Suite 4000
Minneapolis, MN 55402
Phone: (612) 492-7270
Fax: (612) 492-7077



Dakota Range: Teresa Kaaz Turbine Proximity

-  Project Boundary
-  County Boundary
-  Parcel Boundary
-  Proposed Turbine (LAY 038)

Date: 5/30/2018 Author: MR
 Coordinate System: NAD 1983 StatePlane South Dakota North FIPS 4001 Feet
 Projection: Lambert Conformal Conic
 Datum: North American 1983
 Units: Foot US





Dakota Range Turbine Elevations

- Project Boundary
- Parcel Boundary
- Proposed Turbine (Layout 38)**
 - Primary
 - Spare
- Existing Transmission**
 - 34kV5 - 69kV
 - 240kV - 345kV
 - 100kV - 138kV
- Proposed Transmission**
 - 34kV5 - 69kV
 - 240kV - 345kV
 - 100kV - 138kV

Date: 5/25/2018 Author: MR
 Coordinate System: NAD 1983 HARN StatePlane South Dakota North FIPS 4001 Feet
 Projection: Lambert Conformal Conic
 Datum: North American 1983 HARN
 Units: Foot US

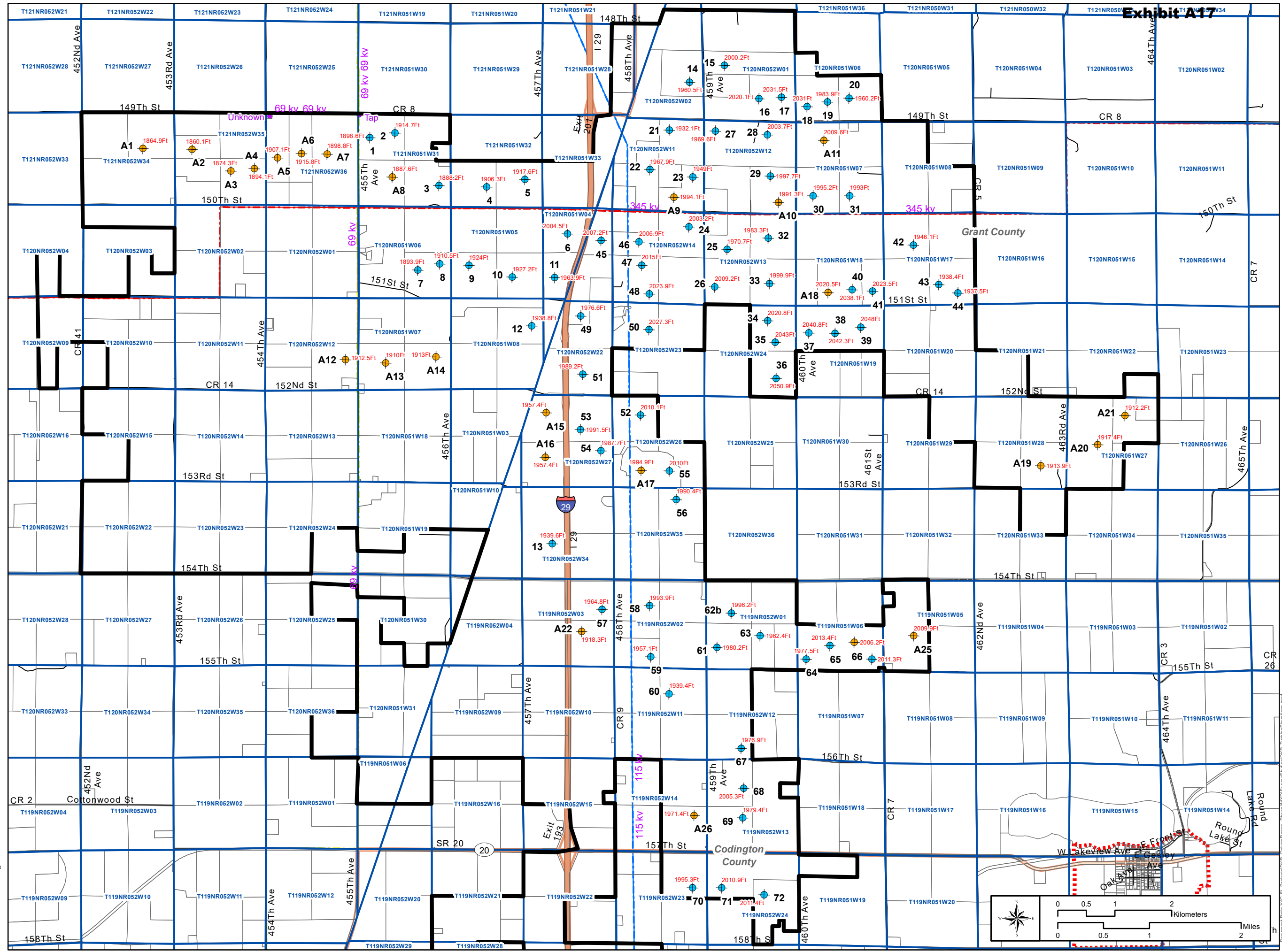


Exhibit A17

Document Path: Y:\GIS\Projects\GIS\Surveys\Surveys\GIS\TurbineElevations.mxd