

# Sweetland Wind Farm

Sweetland Wind Farm, LLC

A project of



November 2017



November 2017



**Scout Clean Energy:**  
Project Development

**Harvest Energy Services, Inc.:**  
Construction and Operations

Sunset at Mariah North 230 MW

## Scout and Harvest: Expertise from Concept to Operations



- Scout is a wind and solar development company based in Boulder, CO with staff in CA, TX and MA.
- Scout has developed 9 major wind projects since 2010, including most recently the 230 MW Mariah North wind project in ERCOT that closed in February 2016.
- Scout employees have worked together from 6-10 years in previous companies.
- A total of 12 projects currently in active development.
- Harvest Energy Services, Inc. is a fast growing independent service provider to the wind and solar industry with offices in Boulder, CO, CA and TX.
- HES provides construction management, operations and maintenance, and asset management services primarily to wind assets in the US and Latin America.
- HES has managed more than 500 MW of construction since its founding in 2014 and services dozens of sites for GE, EDF, TerraGen, Goldwind and other owner-operators.

November 2017

3

## Sweetland- Project History



- Project area was previously part of Titan Wind Project, a proposed 5,050 MW project sited over 500,000 acres south of Miller and west of Wessington Springs, South Dakota.
- Titan was a joint venture between BP Wind Energy and Clipper Windpower.
- An initial 25 MW project was completed in 2009.
- Larger Titan Wind Project was abandoned after BP Wind Energy left the wind industry and Clipper Windpower suffered technology reliability issues.
- Sweetland has been reshaped with guidance from USFWS to focus on a 150-200 MW project.
- Sweetland now plans to have local interconnection and offtake, with opportunity for multiple expansion phases.

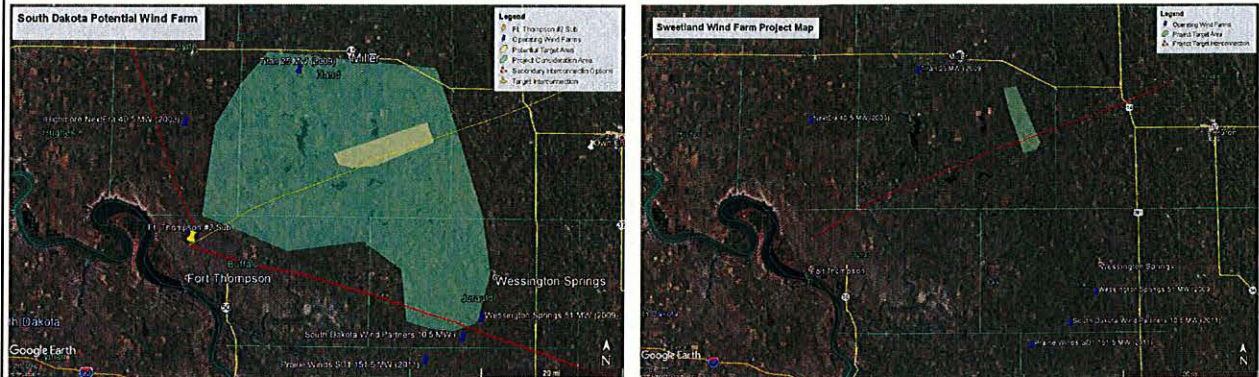
November 2017

## Sweetland- Project History



Original Project Area

Current Project Area



November 2017

## Sweetland- Production Tax Credit Qualification Work



- During December 13-22, 2016, Sweetland had work done to qualify the Project for the federal Production Tax Credit (“PTC”).
- Work consisted of excavating three planned turbine foundation sites and constructing approximately 2,300 linear feet of 14-foot-wide access road between the excavation sites.
- No turbine foundations were installed, and no structures were erected.
- Other than routine maintenance work, no additional work conducted since December 22, 2016.

November 2017

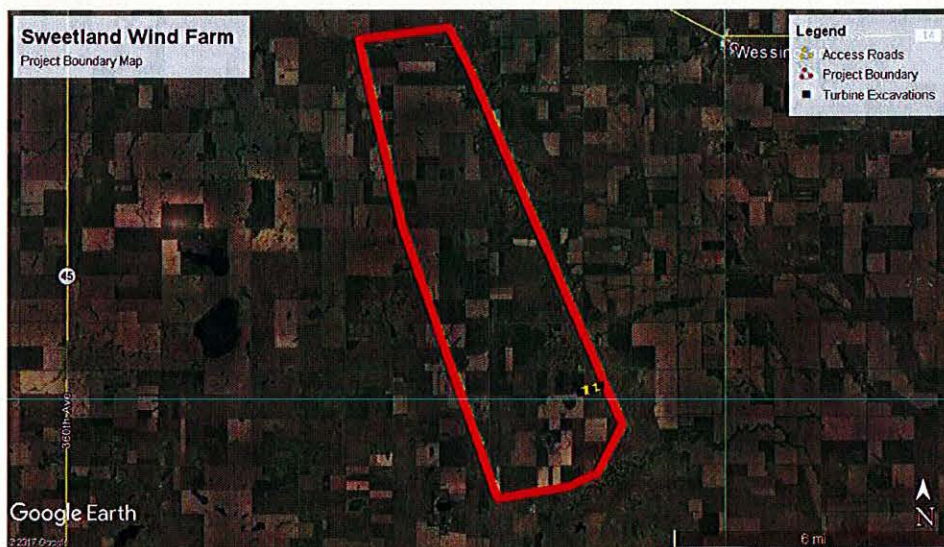


## Sweetland- Production Tax Credit Qualification Work

- Prior to performing PTC-qualification work:
  - Had a critical issues analysis prepared to confirm the absence of environmental issues that would prohibit Project development;
  - Leased land/obtained landowner approval;
  - Confirmed no County permit required for work, and provided updates to County prior to/after work;
  - Obtained and complied with a General Permit for Storm Water Discharges Associated with Construction Activities, including implementing a Storm Water Pollution Prevention Plan; and
  - Contractor requested utility locates.

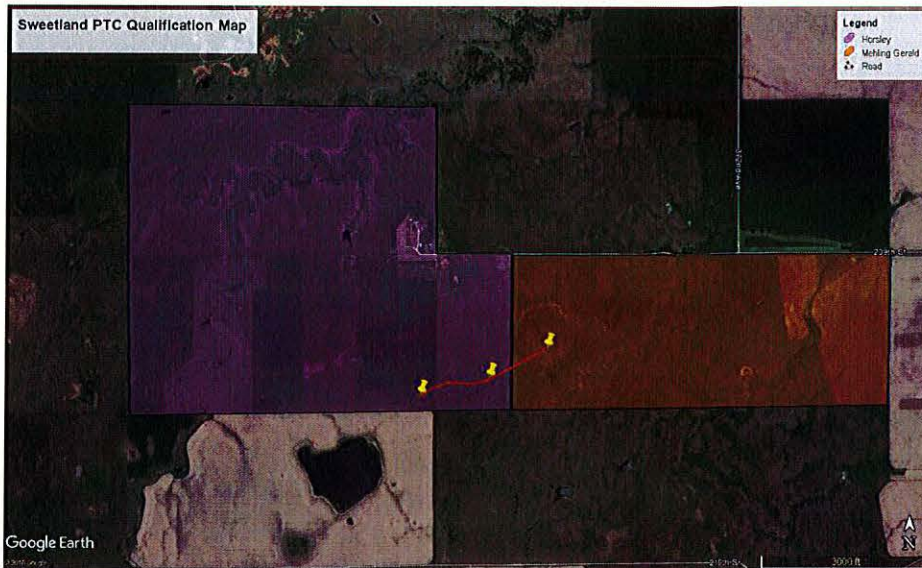
November 2017

## Sweetland- Production Tax Credit Qualification Work



November 2017

## Sweetland- Production Tax Credit Qualification Work



November 2017

## Sweetland- Production Tax Credit Qualification Work



- Met with Commission Staff on October 4, 2017
- Going forward, Sweetland commits to the following:
  - No further construction until requisite permits have been obtained for the Project;
  - Continue to perform routine maintenance where PTC-qualification work was performed; and
  - If Sweetland does not obtain an energy facility permit from the Commission for the Project by December 31, 2010, Sweetland will restore the areas affected (also obligated to restore by leases).

November 2017



# Sweetland- Project Timeline

Permitting Schedule	
Permitting Process	Start Date
Western Area Power Administration Environmental Assessment	2 <sup>nd</sup> -3 <sup>rd</sup> Quarter 2018
Hand County Conditional Use Permit	2 <sup>nd</sup> -3 <sup>rd</sup> Quarter 2018
South Dakota Public Utilities Commission Energy Facility Permit	3 <sup>rd</sup> -4 <sup>th</sup> Quarter 2018

November 2017