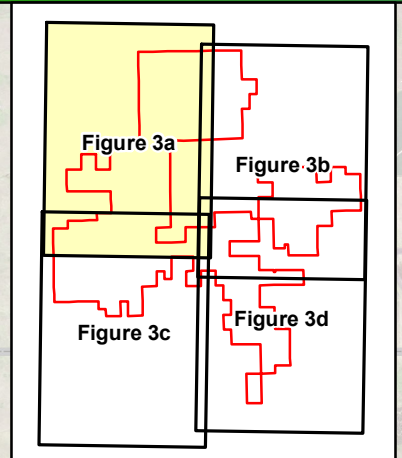


- ✚ Cemetery
- Participating Residential Structures
- Non-Participating Residential Structures
- Microwave Beam Path
- Transmission
- Pipeline
- Private Airstrip

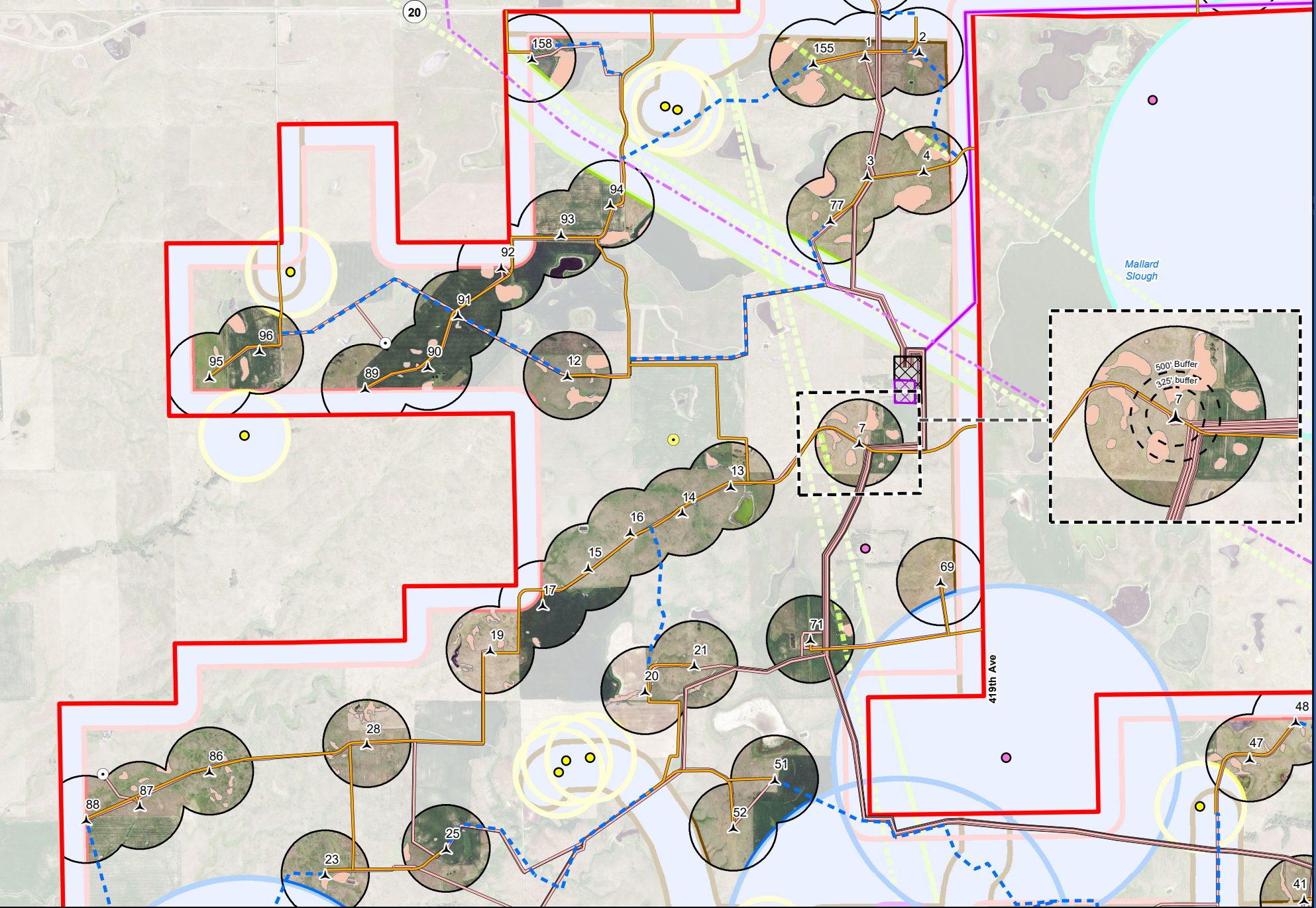
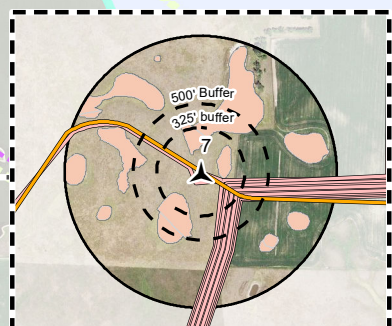
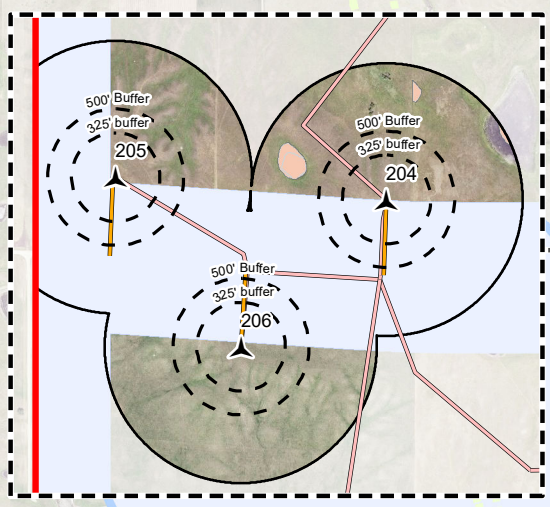
Imagery Source: 2015 Color FSA
Data Source: Geronimo Energy, MN DNR, USFWS, Census, Comsearch

Figure 3
Project Micrositing
Crocker Wind Farm
Clark County, SD
45.079602, -97.845696

- ▲ Preliminary Turbine Location
 - Preliminary Permanent Met Tower
 - Temporary Met Tower
 - Project Area Boundary
 - ▣ Project Substation
 - ▣ O&M Facility
 - ▣ Interconnect Switchyard
 - ▣ Preliminary Staging Area
 - Interconnection 345 kV Transmission Line
 - Preliminary Access Road
 - Preliminary Collection Line
 - Preliminary Crane Path
 - 1000 ft Micrositing Area
 - Setbacks
 - Environmental Avoidance Area
- Note:
1. Turbines not drawn to scale.
2. Turbine numbering is not sequential.
3. Any turbine shifts within 1,000 feet will comply with 50 dBA noise setback and 30 hours per year shadow flicker guideline.
4. Cultural Resource data is not included.



- ✚ Cemetery
 - Participating Residential Structures
 - Non-Participating Residential Structures
 - Microwave Beam Path
 - Transmission
 - Pipeline
 - Private Airstrip
- Regulatory Setback Features**
- Participating Residences - 1000 feet
 - Non-Participating Residences - 3960 feet
 - Non-Participant Parcel
 - Non-Participants - 550 feet
 - Pipeline/Transmission Line - 550 feet
 - Project Boundary - 550 feet
 - Roads - 550 feet
 - Cemetery - 1 Mile

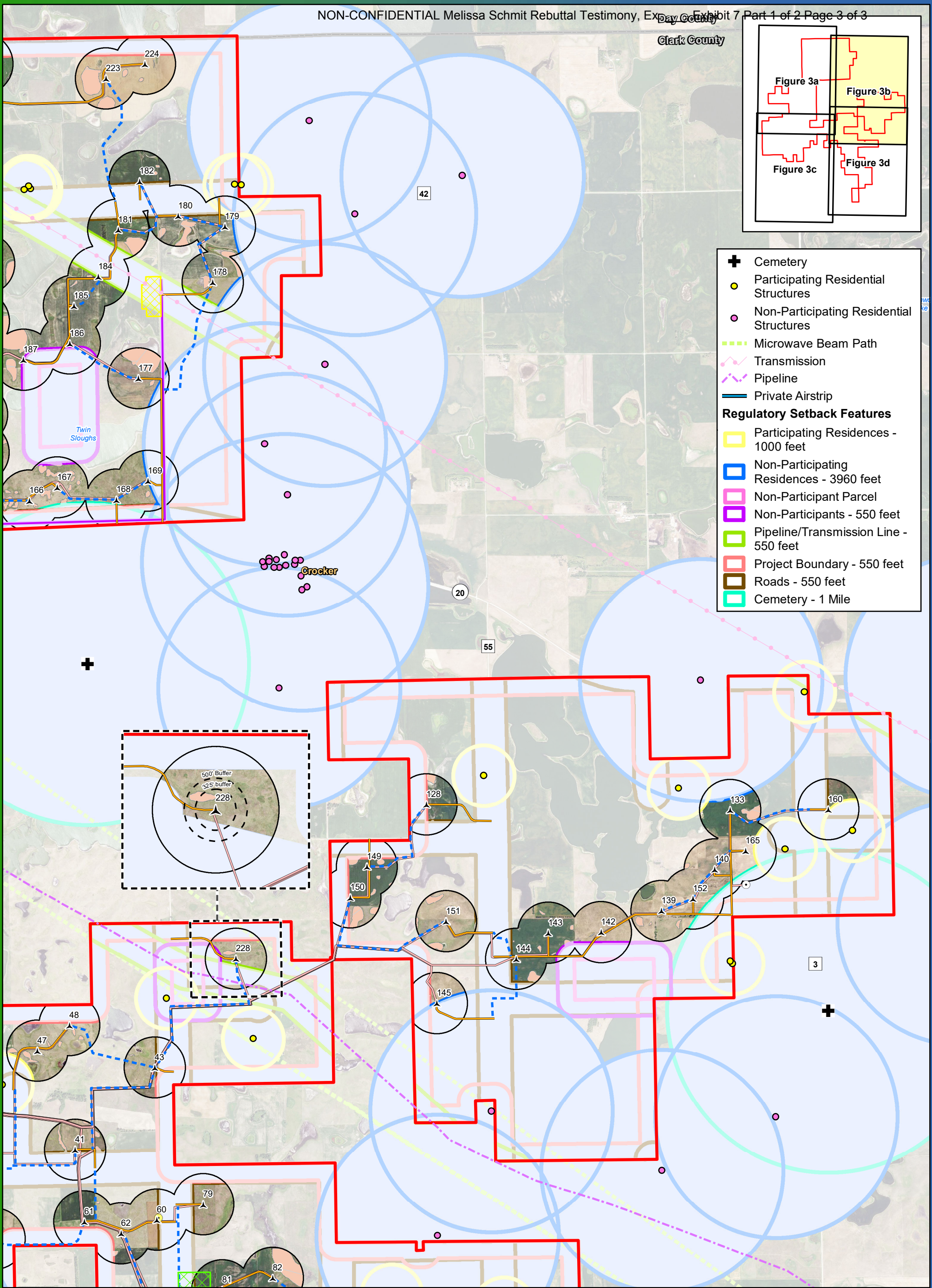
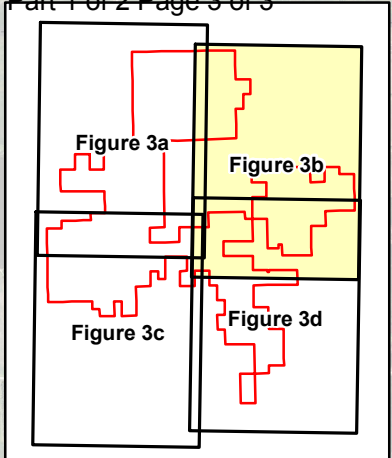


0 0.3 0.6 1.2
Miles

Figure 3a
Project Micrositing (Detailed)
Crocker Wind Farm
Clark County, SD
45.079602, -97.845696

- ▲ Turbine Location
 - Preliminary Permanent Met Tower
 - Temporary Met Tower
 - ▭ Project Area Boundary
 - ▭ Project Substation
 - ▭ O&M Facility
 - ▭ Interconnect Switchyard
 - ▭ Preliminary Staging Area
 - ▭ Interconnection 345 kV Transmission Line
 - ▭ Preliminary Access Road
 - ▭ Preliminary Collection Line
 - ▭ Preliminary Crane Path
 - 1000 ft Micrositing Area
 - ▭ Setbacks
 - ▭ Environmental Avoidance Area
- Note:
1. Turbines not drawn to scale.
2. Turbine numbering is not sequential.
3. Any turbine shifts within 1,000 feet will comply with 50 dBA noise setback and 30 hours per year shadow flicker guideline.
4. Cultural Resource data is not included.

Clark County



- ✚ Cemetery
- Participating Residential Structures
- Non-Participating Residential Structures
- Microwave Beam Path
- Transmission
- Pipeline
- Private Airstrip
- Regulatory Setback Features**
- Participating Residences - 1000 feet
- Non-Participating Residences - 3960 feet
- Non-Participant Parcel
- Non-Participants - 550 feet
- Pipeline/Transmission Line - 550 feet
- Project Boundary - 550 feet
- Roads - 550 feet
- Cemetery - 1 Mile

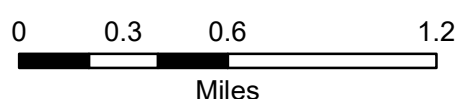
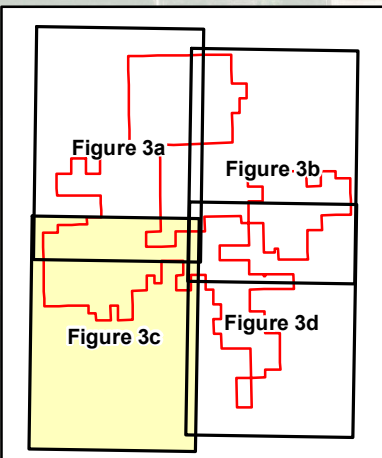
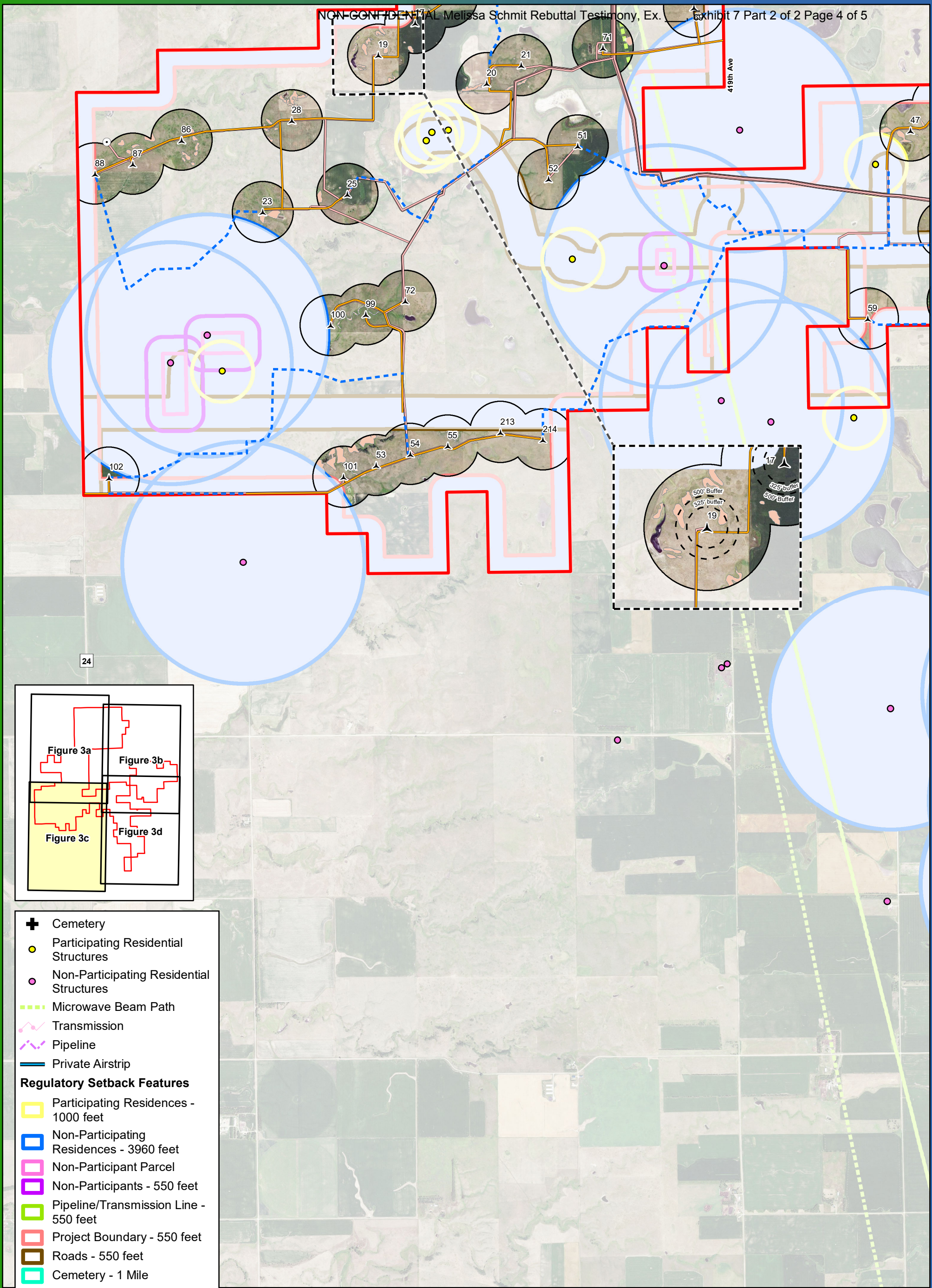


Figure 3b
Project Micrositing (Detailed)

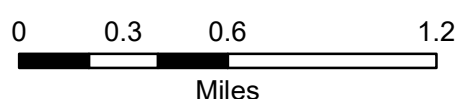
Crocker Wind Farm
Clark County, SD
45.079602, -97.845696

- ▲ Turbine Location
- Preliminary Permanent Met Tower
- Temporary Met Tower
- Project Area Boundary
- Project Substation
- O&M Facility
- Interconnect Switchyard
- Preliminary Staging Area
- Interconnection 345 kV Transmission Line
- Preliminary Access Road
- Preliminary Collection Line
- Preliminary Crane Path
- 1000 ft Micrositing Area
- Setbacks
- Environmental Avoidance Area

Note:
1. Turbines not drawn to scale.
2. Turbine numbering is not sequential.
3. Any turbine shifting within 1,000 feet will comply with 50 dBA noise setback and 30 hours per year shadow flicker guideline.
4. Cultural Resource data is not included.



- ✚ Cemetery
 - Participating Residential Structures
 - Non-Participating Residential Structures
 - Microwave Beam Path
 - Transmission
 - Pipeline
 - Private Airstrip
- Regulatory Setback Features**
- Participating Residences - 1000 feet
 - Non-Participating Residences - 3960 feet
 - Non-Participant Parcel
 - Non-Participants - 550 feet
 - Pipeline/Transmission Line - 550 feet
 - Project Boundary - 550 feet
 - Roads - 550 feet
 - Cemetery - 1 Mile

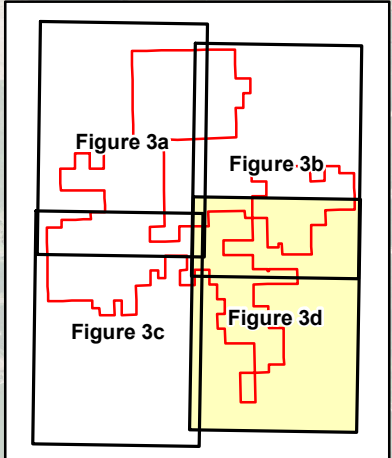
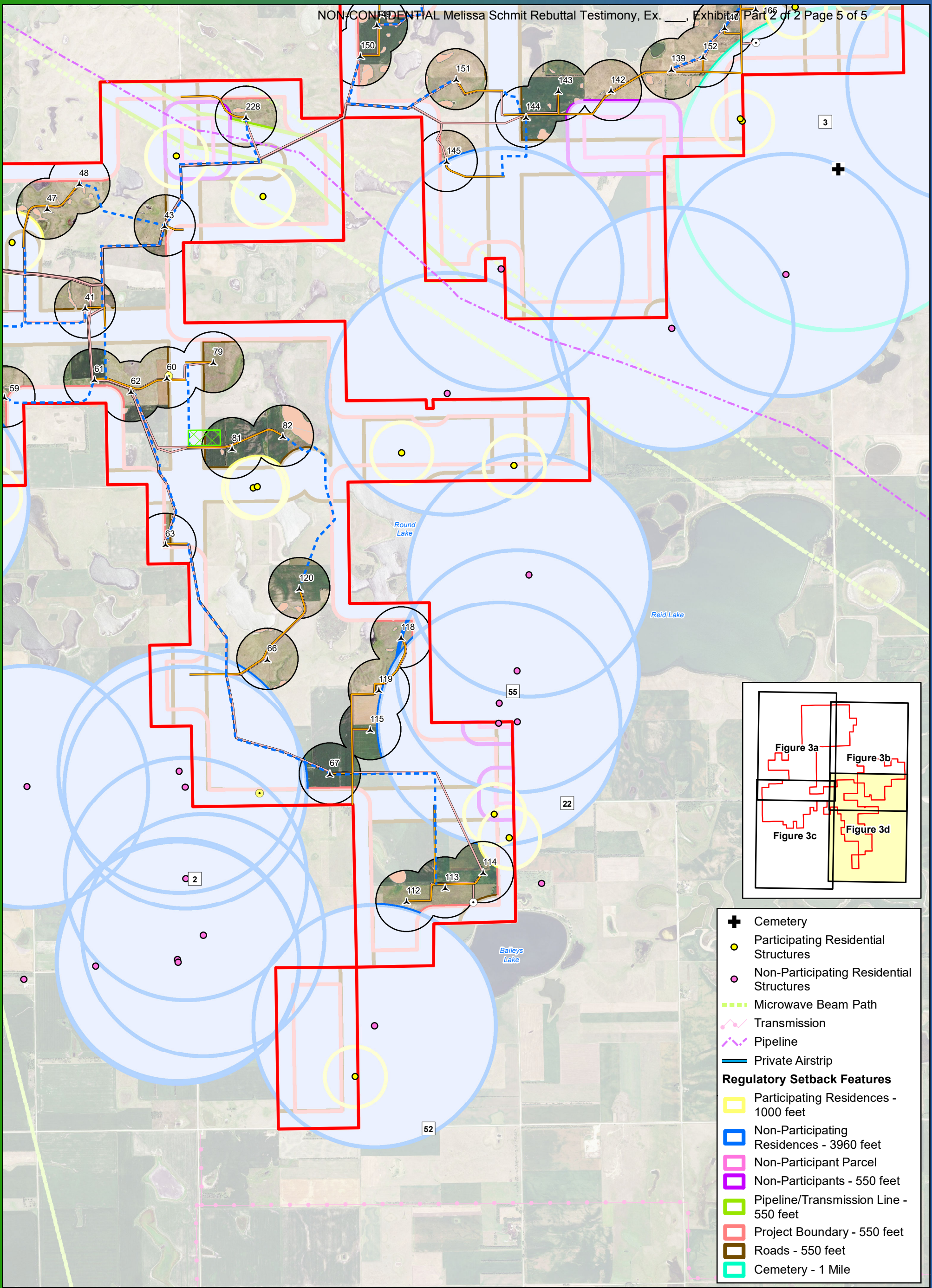


**Figure 3c
Project Micrositing (Detailed)**

**Crocker Wind Farm
Clark County, SD
45.079602, -97.845696**

- ▲ Turbine Location
- Preliminary Permanent Met Tower
- Temporary Met Tower
- Project Area Boundary
- Project Substation
- O&M Facility
- Interconnect Switchyard
- Preliminary Staging Area
- Interconnection 345 kV Transmission Line
- Preliminary Access Road
- Preliminary Collection Line
- Preliminary Crane Path
- 1000 ft Micrositing Area
- Setbacks
- Environmental Avoidance Area

Note:
 1. Turbines not drawn to scale.
 2. Turbine numbering is not sequential.
 3. Any turbine shifts within 1,000 feet will comply with 50 dBA noise setback and 30 hours per year shadow flicker guideline.
 4. Cultural Resource data is not included.



- +** Cemetery
- Participating Residential Structures
- Non-Participating Residential Structures
- Microwave Beam Path
- Transmission
- Pipeline
- Private Airstrip
- Regulatory Setback Features**
- Participating Residences - 1000 feet
- Non-Participating Residences - 3960 feet
- Non-Participant Parcel
- Non-Participants - 550 feet
- Pipeline/Transmission Line - 550 feet
- Project Boundary - 550 feet
- Roads - 550 feet
- Cemetery - 1 Mile

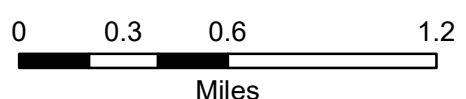


Figure 3d
Project Micrositing (Detailed)

Crocker Wind Farm
Clark County, SD
45.079602, -97.845696

- ▲** Turbine Location
- Preliminary Permanent Met Tower
- Temporary Met Tower
- Project Area Boundary
- Project Substation
- O&M Facility
- Interconnect Switchyard
- Preliminary Staging Area
- Interconnection 345 kV Transmission Line
- Preliminary Access Road
- Preliminary Collection Line
- Preliminary Crane Path
- 1000 ft Micrositing Area
- Setbacks
- Environmental Avoidance Area

- Note:
1. Turbines not drawn to scale.
 2. Turbine numbering is not sequential.
 3. Any turbine shifts within 1,000 feet will comply with 50 dBA noise setback and 30 hours per year shadow flicker guideline.
 4. Cultural Resource data is not included.